



KLC GROUP



# CipherDriveOne™

NSA CSfC Component Listed

# Protecting Your Data



CipherDriveOne provides unparalleled protection for every computer using pre-boot locking of any OPAL 2.0 SSD. CipherDriveOne locks the entire hard drive and not just individual data files. NSA-level encrypted keys must be unlocked before any operating system or virtual machine can start up. CipherDriveOne protects remote users and high-value workstations against unauthorized access, malicious data theft, and privacy breaches.

## Secure Your Data-at-Rest

*Remote Computers* - Secure your mobile workforce using CipherDriveOne's pre-boot locking software. CipherDriveOne protects the entire contents of the hard drive where the computer is turned on or off. CipherDriveOne is easy to use and requires minimal configuration.

*Loss and Theft* - Organized criminals can remove hard drives from any system to retrieve the data using a number of hacker tools. CipherDriveOne protects your intellectual property from accidental loss or the stealing of confidential data by thieves.

## Privacy Compliance

Comply with Data Protection Mandates

Meet and exceeds local, federal and international privacy compliance rules and policies.

- General Data Protection Regulation (GDPR)
- California Consumer Privacy Act (CCPA)
- Sarbanes-Oxley Act (SOX)
- Health Insurance Portability and Accountability Act (HIPAA)
- The Payment Card Industry Data Security Standard (PCI-DSS)
- NSA Data-at-Rest 5.0 Capability Package

# CipherDriveOne Features

## Pre-boot Locking

CipherDriveOne protects the computer that is turned off and the data is at rest. The software authenticates a user before the computer can start the operating system. This method of protection protects the entire hard drive's data and not just individual files which may be password protected or encrypted.

## Military Grade Encryption

CipherDriveOne utilizes military grade encryption algorithms with FIPS-140-2 and Common Criteria certification.

## Strong Authentication

CipherDriveOne allows users to use custom passwords, smartcards for 2-factor/Multi-factor authentication.

## Multiple User Configuration

CipherDriveOne can be configured to allow multiple users to unlock the desktop or laptop.

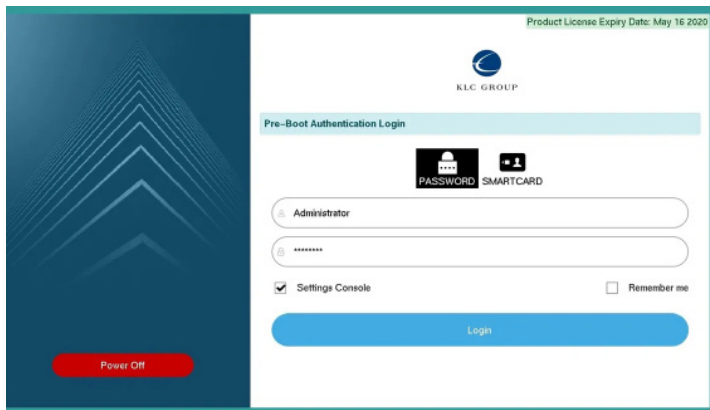
## Audit and Logging

CipherDriveOne allows administrators to review audit logs and authentication reports. These reports can be used to meet privacy compliance laws.

## Self Destruct / Crypto Erase

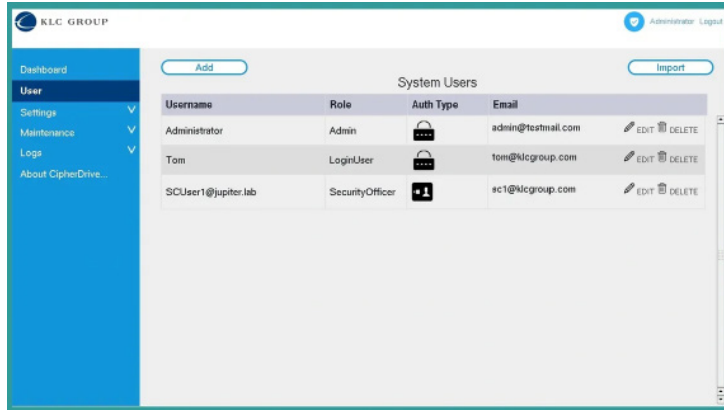
CipherDriveOne supports "self-destruct" of the encryption keys using a configurable "dead-man's switch" feature. The Security Officer or Administrator can issue a Crypto Erase command to cryptographically erase all the data on the drive.

## Easy to Use Security



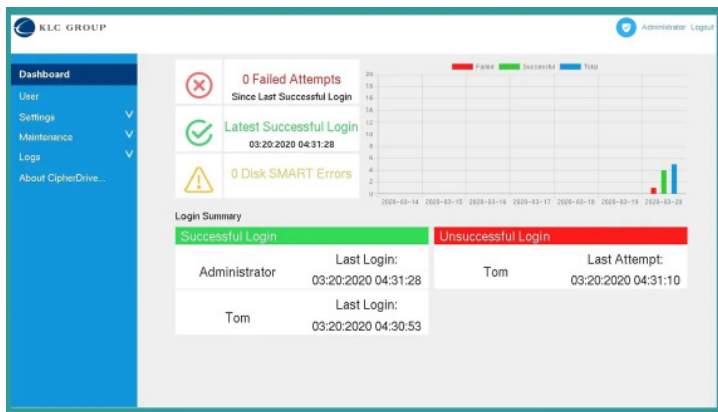
Pre-boot Lock

CipherDriveOne is a pre-boot authentication software. Once the computer user turns on the machine, CipherDriveOne prompts the user for single, 2-factor and multi-factor authentication.



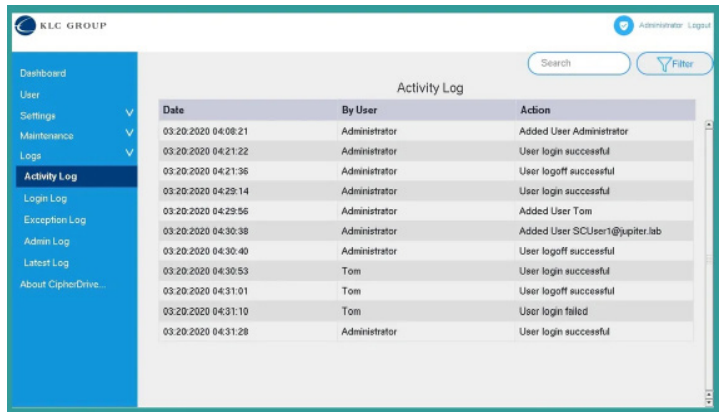
Multiple User Support

CipherDriveOne can be configured to allow 4 different users accounts to unlock the computer to allow the hard drive to boot the operating system.



Dashboard

The CipherDriveOne dashboard gives a quick and detailed overview of the security profile of the computer.



Logging

CipherDriveOne offers 5 detailed logging types, Administrators can review the security profile of the computer and mitigate unauthorized access.