



**SKYLINE®**

**SKYLINER SERIES**  
MULTI-SECTION





# SKYLINER SERIES



Inspired touches make the Skyliner Series by Skyline Homes anything but ordinary. Skyline offers three and four bedroom models, each with two baths. Whether you opt for the base floor plan or the optional den and laundry room, you're sure to find a comfortable place to call home.

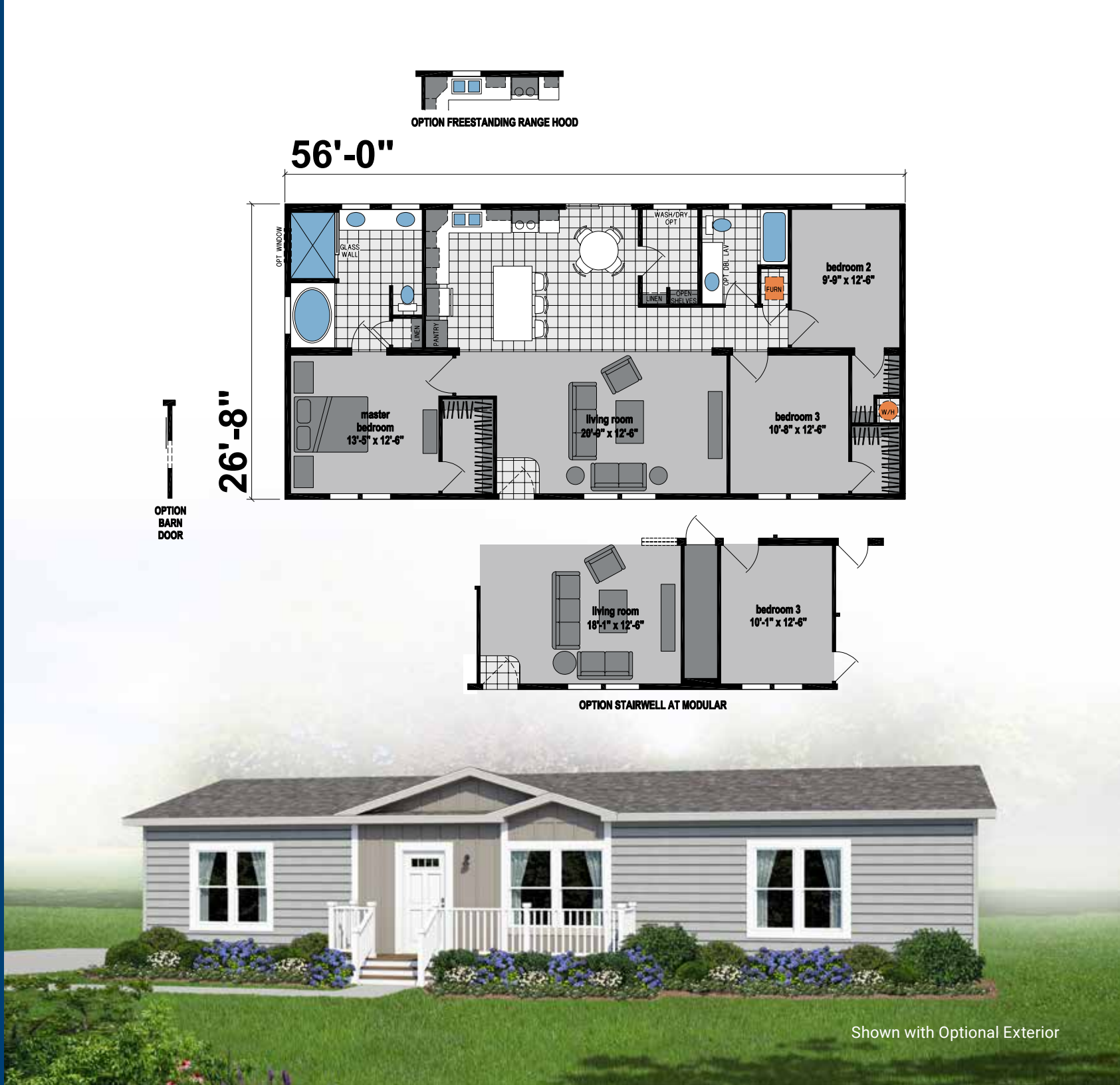
Manufactured in Arkansas City, Kansas and backed by over 73 years of manufacturing experience, a 12-month warranty and stellar customer service – take a look for yourself to see why the Skyliner Series is the right decision for you and your family.





4732J

3 Bed - 2 Bath  
1,494 SQ. FT.



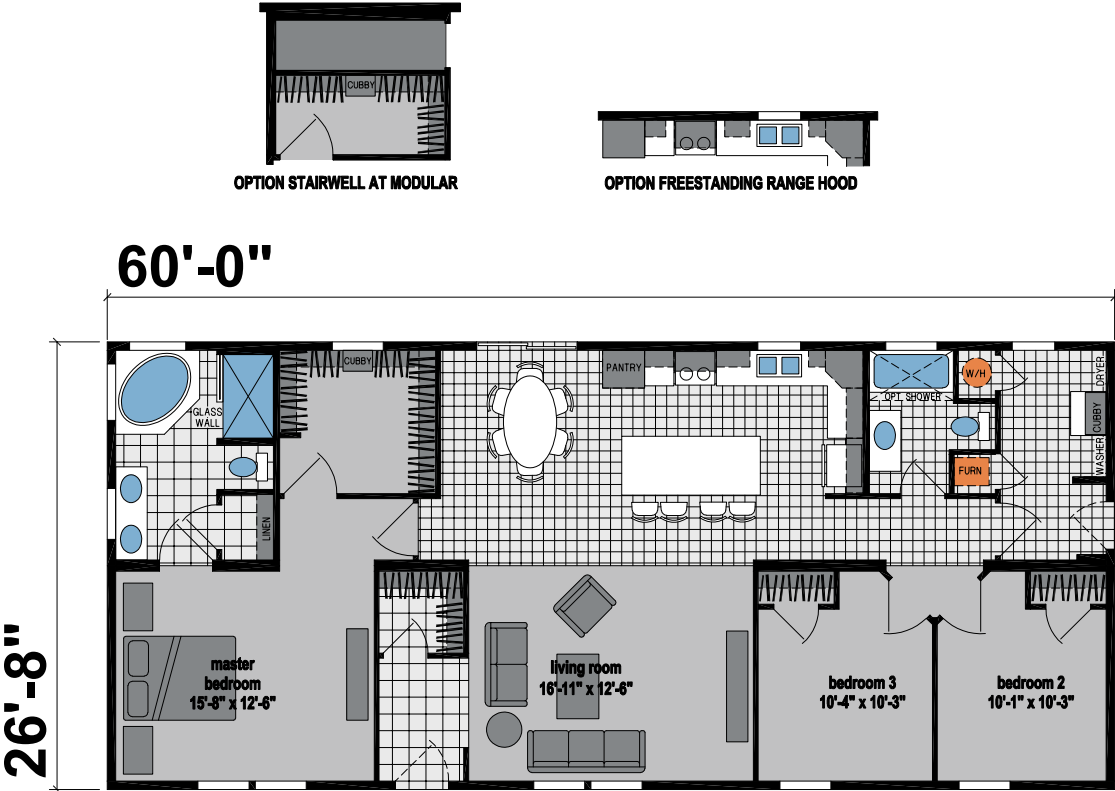
Shown with Optional Exterior





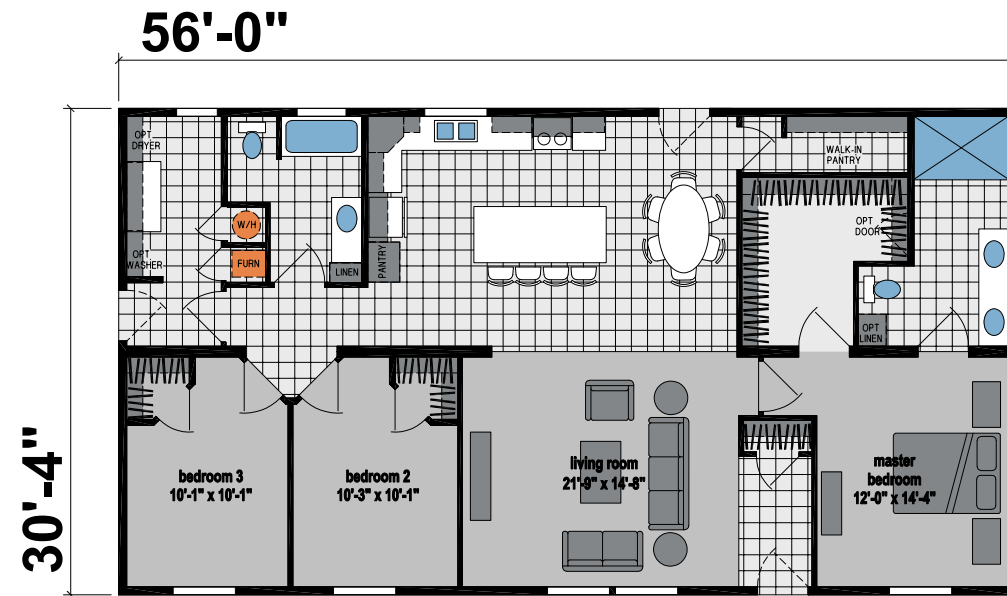
4765J

3 Bed - 2 Bath  
1,600 SQ. FT.





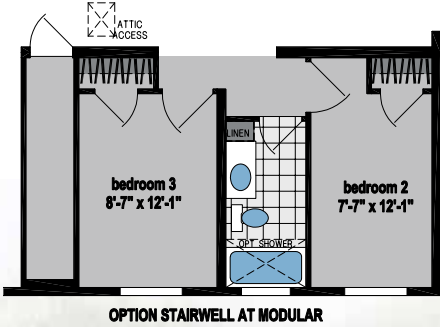
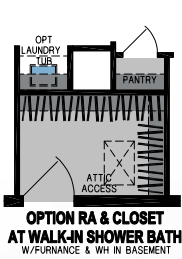
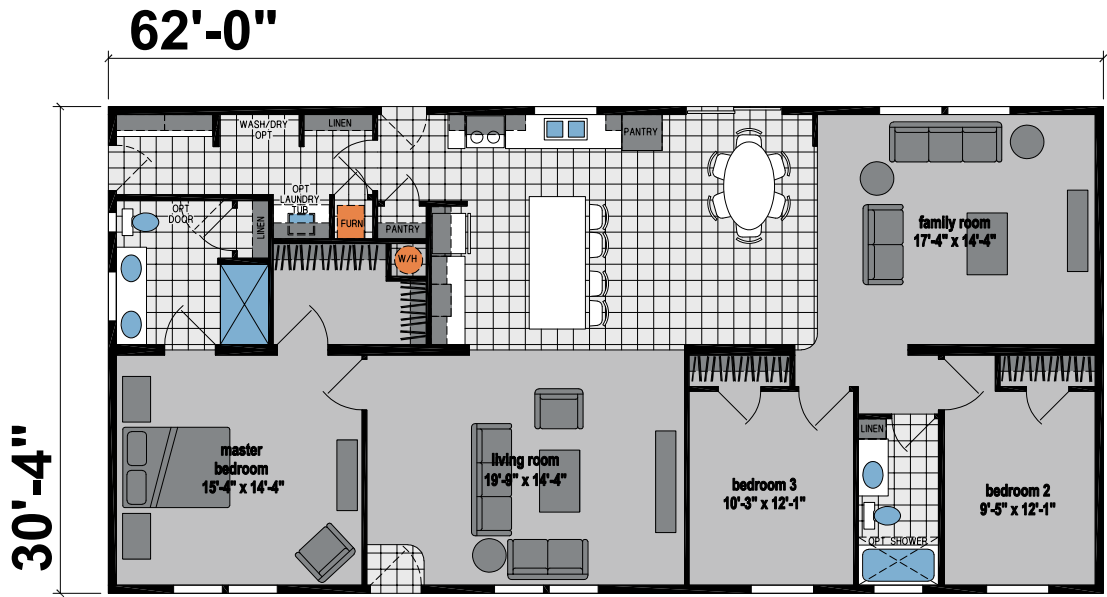
Bed - 2 Bath  
1,698 SQ. FT.



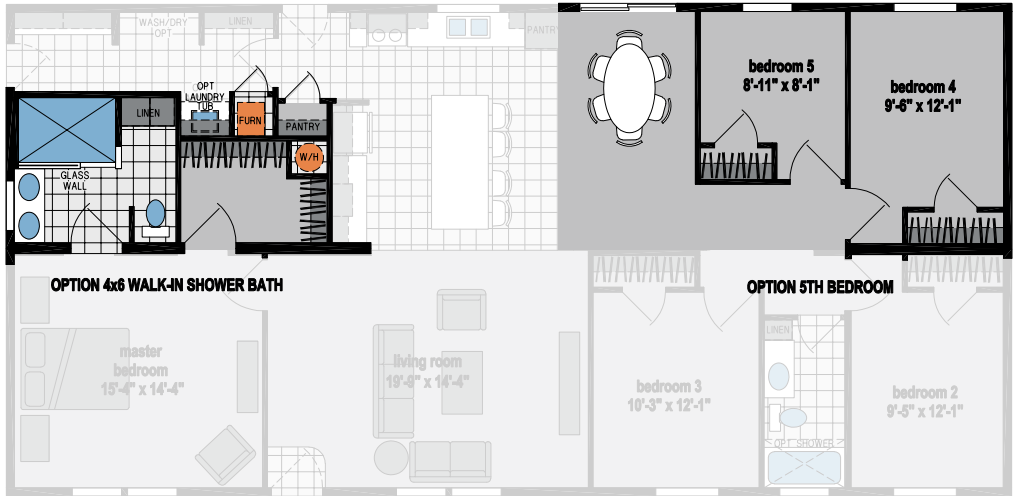
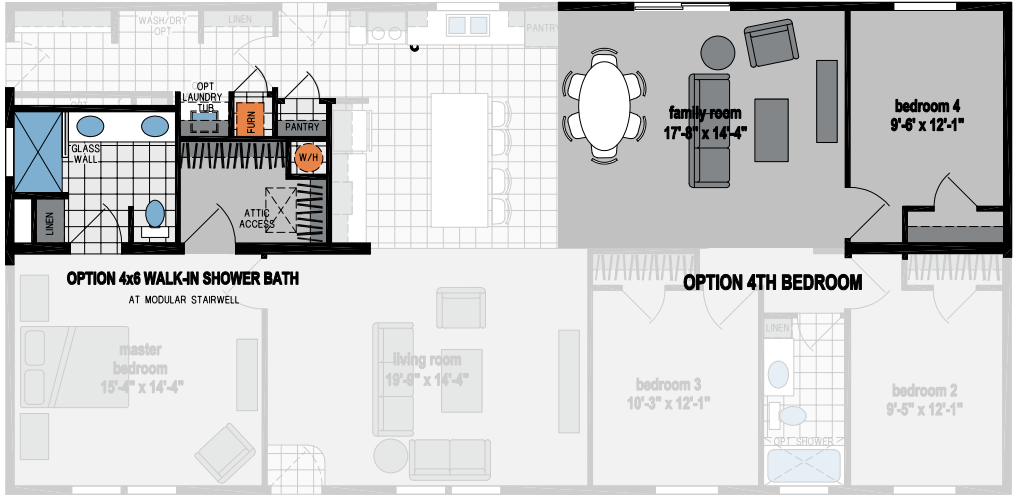
3 Bed - 2 Bath  
2,062 SQ. FT.

6334P

3 Bed - 2 Bath  
1,881 SQ. FT.

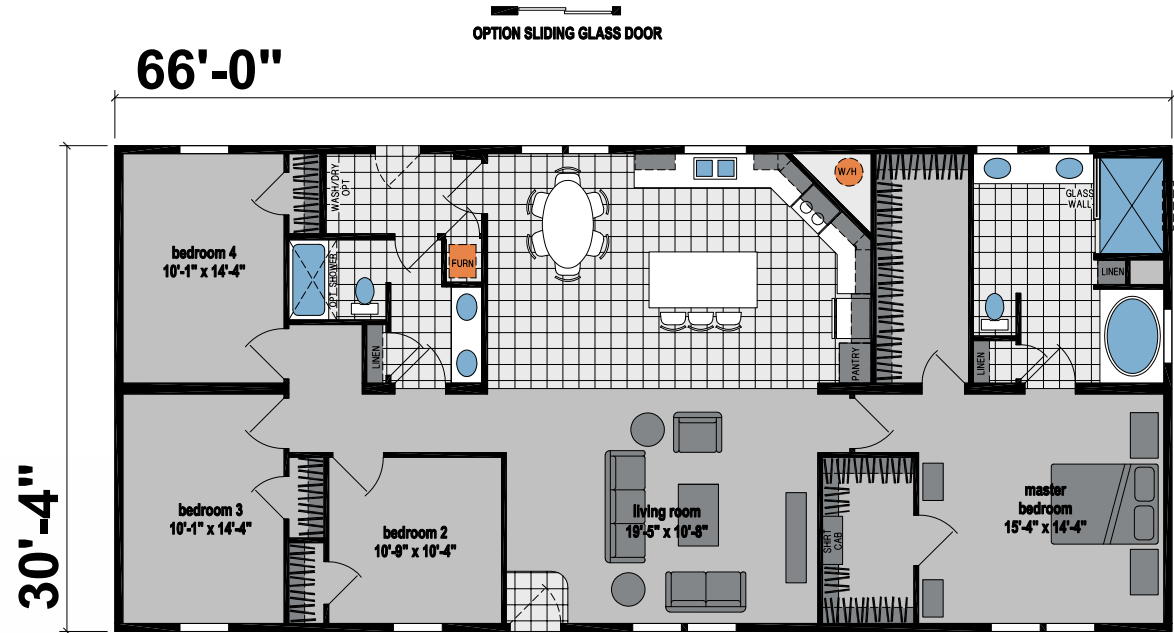


Shown with Optional Exterior



6301B

4 Bed - 2 Bath  
2,002 SQ. FT.



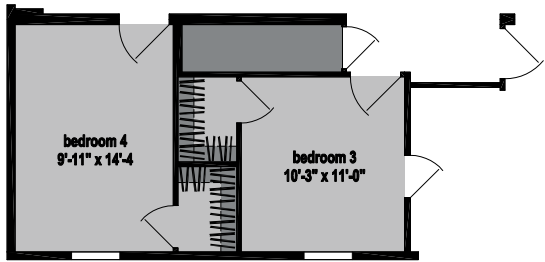
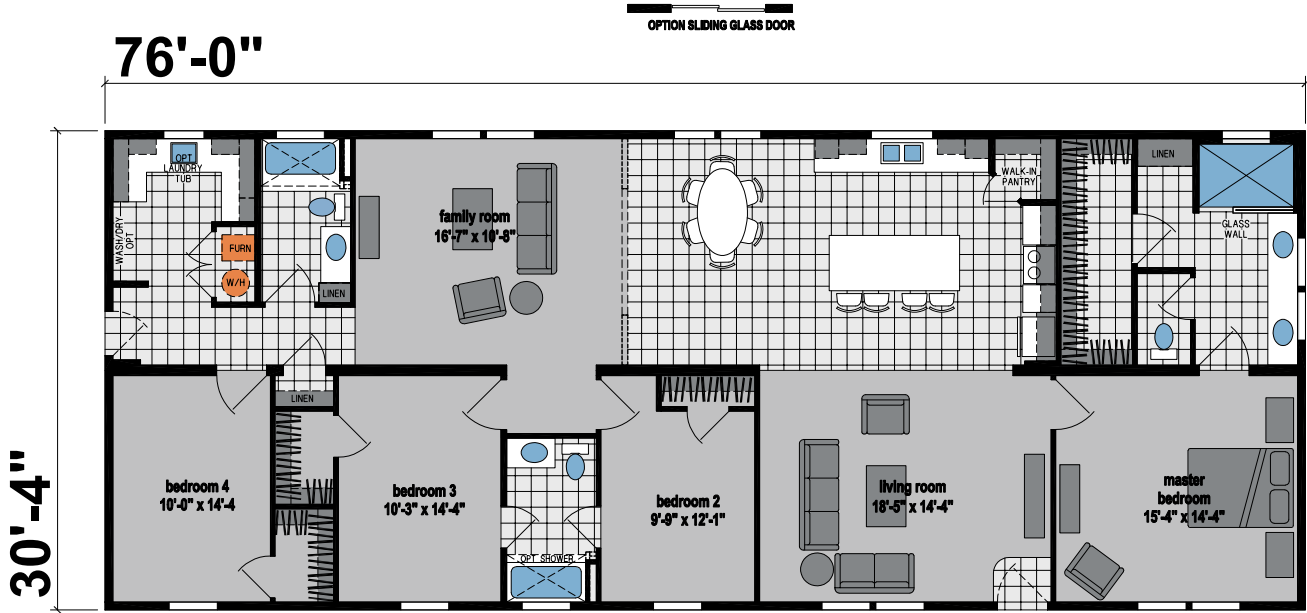
Shown with Optional Exterior





6380P

4 Bed - 3 Bath  
2,305 SQ. FT.



OPTION STAIRWELL AT MODULAR

SKYLINER SERIES  
MULTI-SECTION STANDARD FEATURES

Contruccion

- 8'-6" Sidewall Height
- Continuous Plywood Marriage Line Beam
- Flat Ceilings Throughout
- 2x6 Exterior Walls
- 2x3 Interior Walls
- 3/12 Roof Pitch
- 30lb. Roof Load
- 2x6 Joists on 28' Wide
- 2x8 Joists on 32' Wide
- Detachable Hitch
- Recessed Frame
- Thermal Zone II
- R-19-19-11 Insulation

Exterior

- Vinyl Siding with House Wrap
- 5/4 Trim at Doorside
- 30-Year Architectural Shingles
- 36" 4-Light Fiberglass Front Door
- 36" 6-Panel Fiberglass Rear Door
- Storm Door on Front Door -Shipped loose
- Single Hung Low-E Windows
- 18' Set Back Dormer with Eyebrow Dormer and Columns (E-304)

Heating/Utility

- Electric Furnace
- Perimeter Heat Ducts
- Graduated, Insulated Duct
- In Floor Lateral Cross Overs
- 40-Gallon Electric Water Heater
- Plumb for Washer
- Wire for Dryer
- Wire Shelving Above Washer and Dryer

Plumbing/Electrical

- 200 Amp Service
- (1) Exterior GFI Receptacle
- Ceiling Fan in Living Room, Master Bedroom, Family Room - Per Floor Plan
- LED Lights Throughout (Except Ceiling Fan)
- Wire for Dryer
- Exterior Frost-Free Faucet
- Whole House Water Shut-Off
- Water Shut-Offs All Fixtures
- (1) TV Jack in Living Room

Interior

- Tape and Texture Throughout Except Closets
- Linoleum Entry
- Mohawk® 13oz Carpet
- 1/2 Rebond Carpet Pad
- Tack Strip and Carpet Bar
- Wood Cornices on Most Windows
- 5 1/4"Crown Molding (19V)
- 5 1/4" Base (28K)
- 2 1/4" Casing (4Y)
- 2 1/4" on Windows and Exterior Doors with 5/8" Wrapped Style Jambs (4Y)

Kitchen

- CS84-6HL Cabinet Construction
- Flat Panel Cabinet Doors
- Hardwood Cabinet Stiles
- Soft Close Door/Drawer Hinges/Guides
- Drawer Over Door Construction
- Drawer Bank – Per Floor Plan
- Crown Molding on Overhead Cabinets
- Roll Out Shelves in Island Base Cabinet
- Crescent Edge HPL Countertop
- 18" High Backsplash Tile
- 8" Stainless Steel Double Bowl Sink
- Single-Lever Kitchen Faucet

Appliances

- 21 Cu. Ft. Stainless Refrigerator
- 30" Stainless Electric Range
- Stainless Microwave Range Hood
- Stainless 4-Cycle Dishwasher

Bathroom(s)

- Flat Panel Cabinet Doors
- Hardwood Cabinet Stiles
- Drawer Bank – Per Floor Plan
- Palisade® Shower and/or Fiberglass Tub Showers
- Sliding Glass Barn Shower Door – Per Floor Plan
- Crescent Edge HPL Countertop
- China Lavatory Bowls
- Dual-Handle Lavatory Faucets
- Elongated China Commodes
- Power Vent Fan with Light
- Drop-In Tub with Deck in Master Bath - Per Floor Plan
- Tile Backsplash over Lavatory

12MONTH  
LIMITED WARRANTY

All Skyline\* homes are covered by our limited 12-month warranty, the very best in the industry. It's our way of showing our customers how much we believe in the quality we build into every Skyline home. Our warranty gives new homeowners the assurance that comes from working with a company with more than six decades of building quality homes.

Due to continuous product development and improvement, prices, specifications, and materials are subject to change without notice or obligation. Square footage and other dimensions are approximate. Exterior images may be artist renderings and are not intended to be an accurate representation of the home. Renderings, photos and floor plans may be shown with optional features or third-party additions. All floor plans and features are subject to local code approval. \*Skyline is a brand of Champion Home Builders, Inc.



Member:



# SKYLINE®

Arkansas City, KS



View More  
Brochures!



Visit Us On  
Facebook