

CENTRAL GREAT PLAINS

MULTI-SECTION



CHAMPION®
HOME BUILDERS

MADE FOR LIVING

A Heritage Of Excellence.

Champion Home Builders has been providing families with quality homes for generations. With a unique combination of state-of-the-art manufacturing and high-quality building materials, we provide the highest value in housing. We have earned our reputation by consistently delivering more than our customers might expect. More innovative quality features. More home styles. More flexible floor plan designs. More helpful customer service. And, most of all, more home for the money.

For You. For Life.

Beyond just building you a house, we're committed to providing you and your family with a home to make memories in that will last a lifetime. Somewhere you can feel secure. A place you can call your own. A home that fits your lifestyle and has your own personal touch. Whether you're an active young family constantly on the go or empty nesters ready to simplify, just relax – we have a home that's right for you.

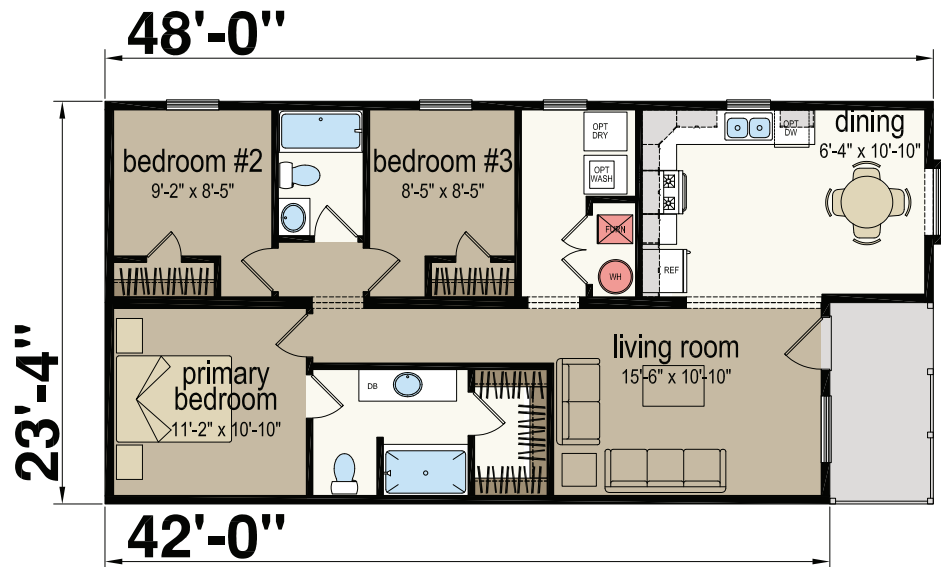
Lifestyle. Choice.

Our vast selection of floor plans, color choices and options give you the freedom to express your personal style and fit your home around your life.

CHAMPION®
HOME BUILDERS

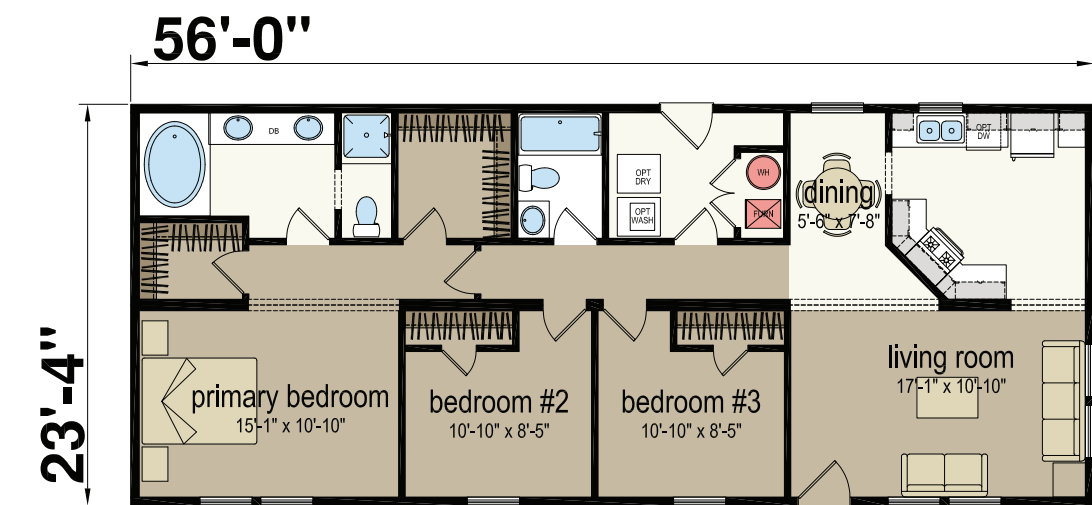
2448H32288

Three Bed | Two Bath | 980 sq. ft.



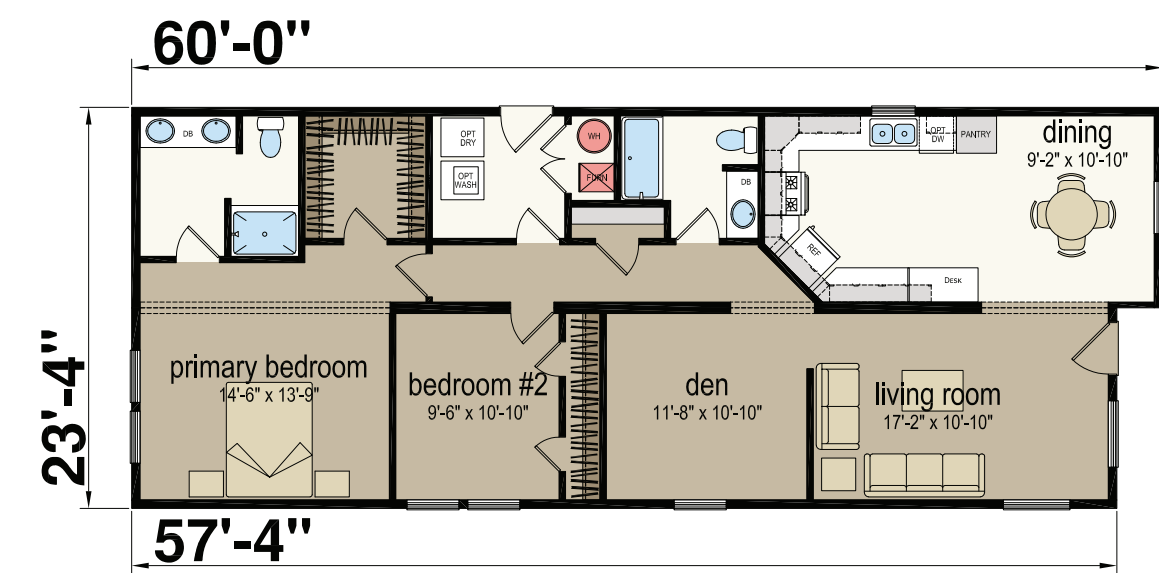
2456H32057

Three Bed | Two Bath | 1,302 sq. ft.



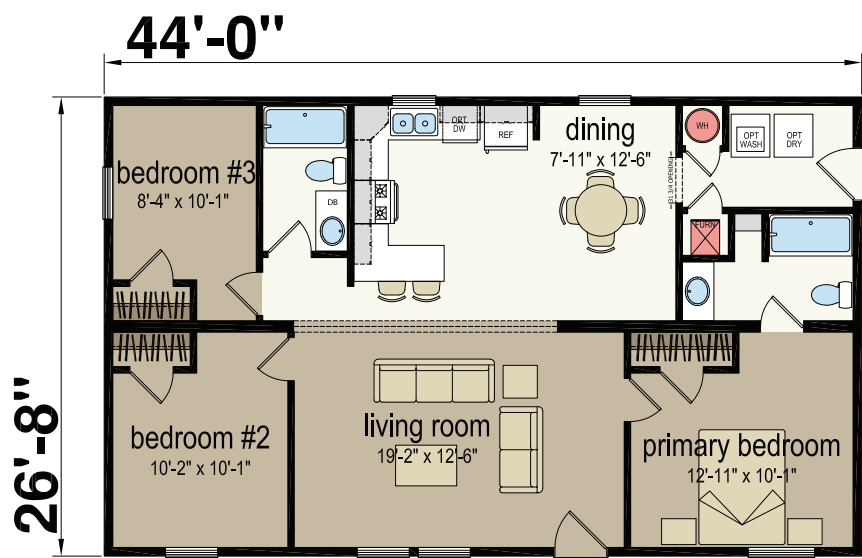
2460H22287

Two Bed | Two Bath | 1,396 sq. ft.



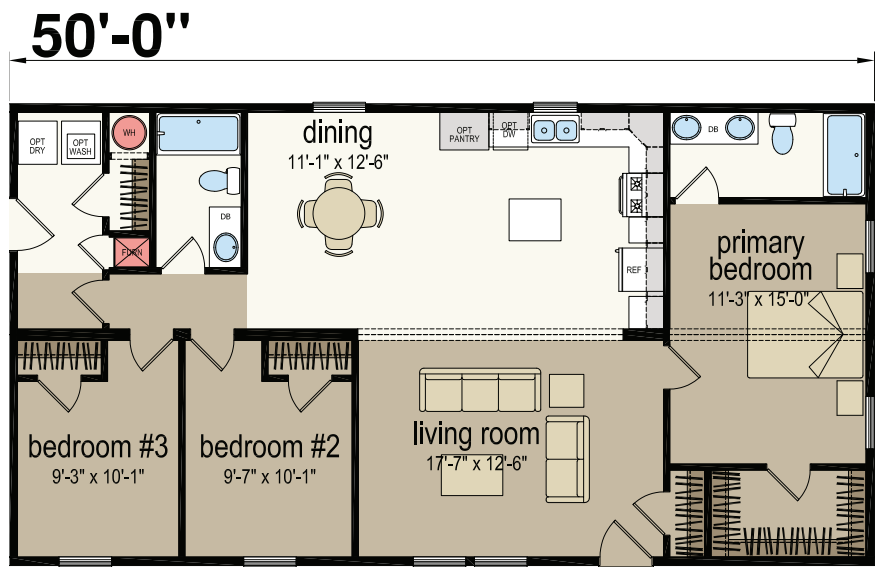
2844H32283

Three Bed | Two Bath | 1,173 sq. ft.



2850H32061

Three Bed | Two Bath | 1,333 sq. ft.

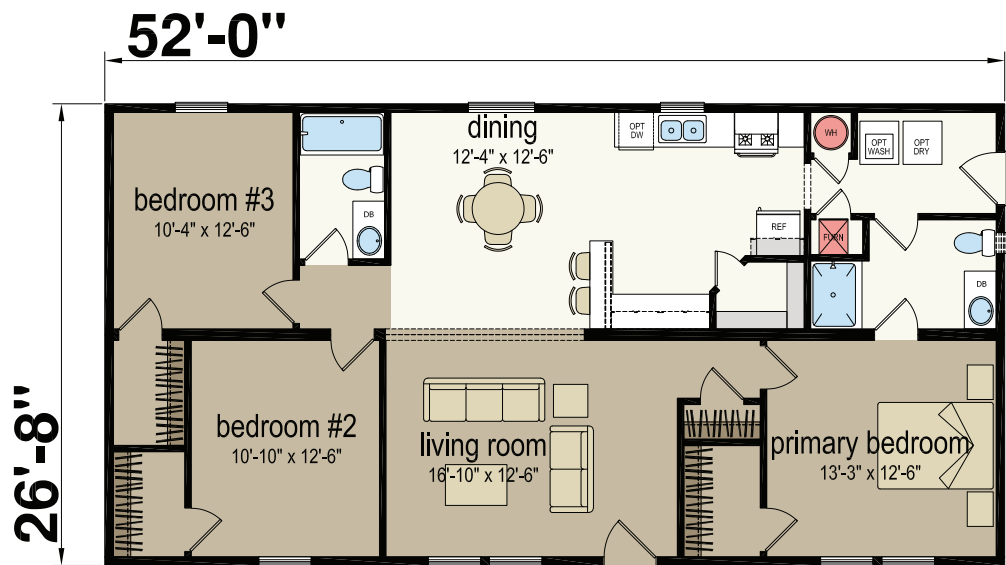


005-2850H32061
3 BEDROOM 2 BATH
1333 SQ. FT. - CONDITIONED

11-25-2022
005-2850H32061.dwg

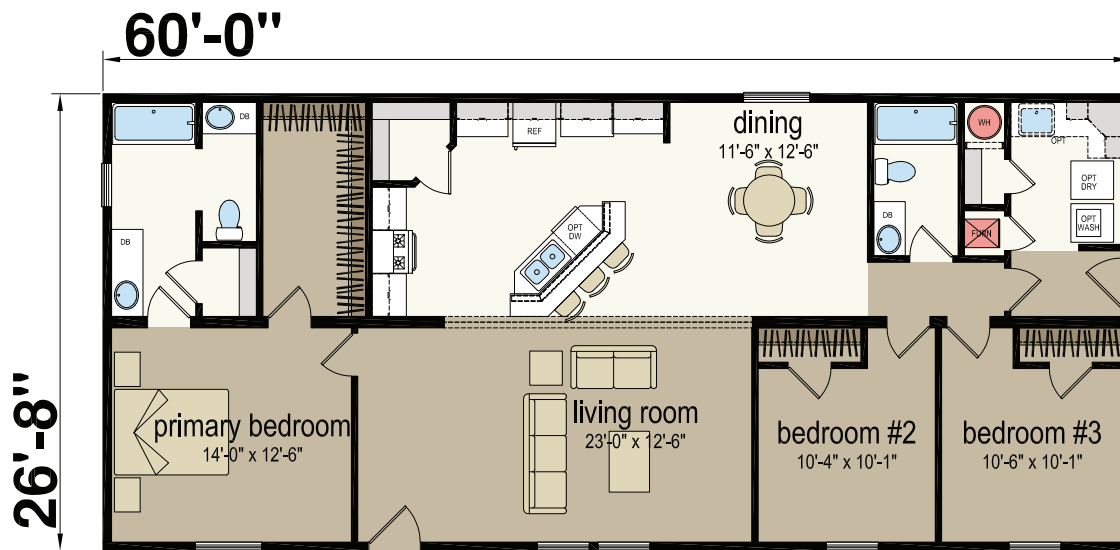
2852H32284

Three Bed | Two Bath | 1,386 sq. ft.



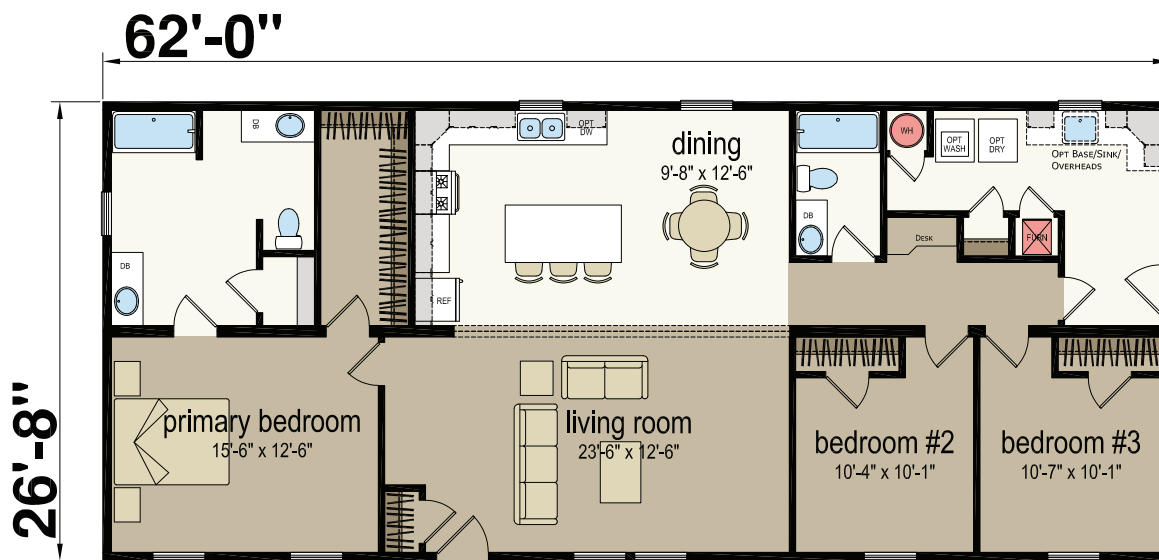
2860H32065- 60' Version

Three Bed | Two Bath | 1,600 sq. ft.



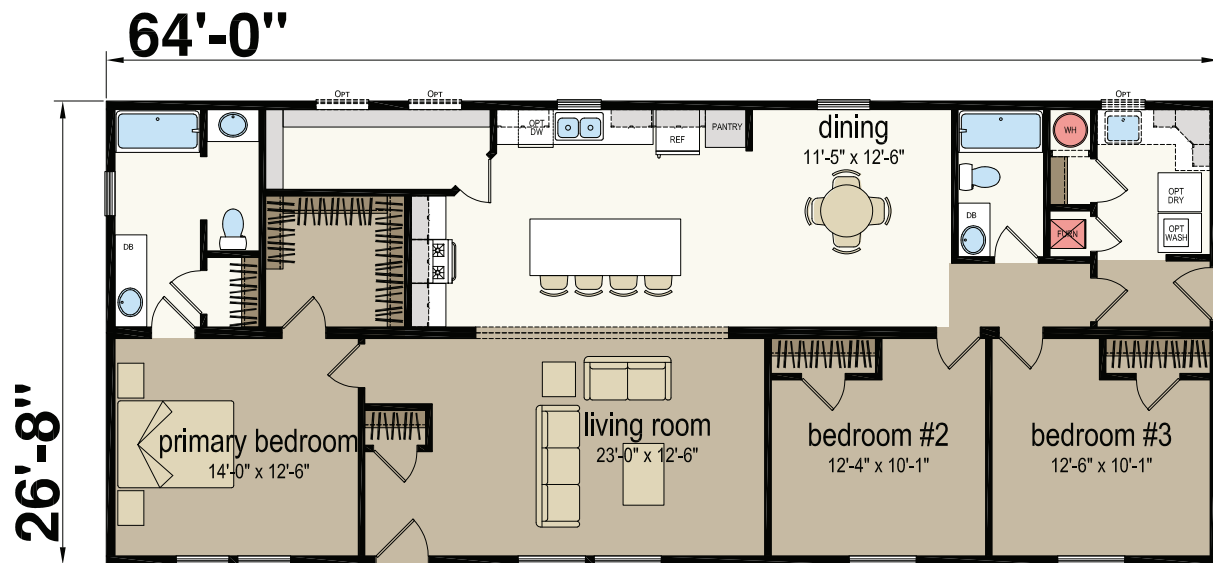
2862H32065 - 60' Version

Three Bed | Two Bath | 1,653 sq. ft.



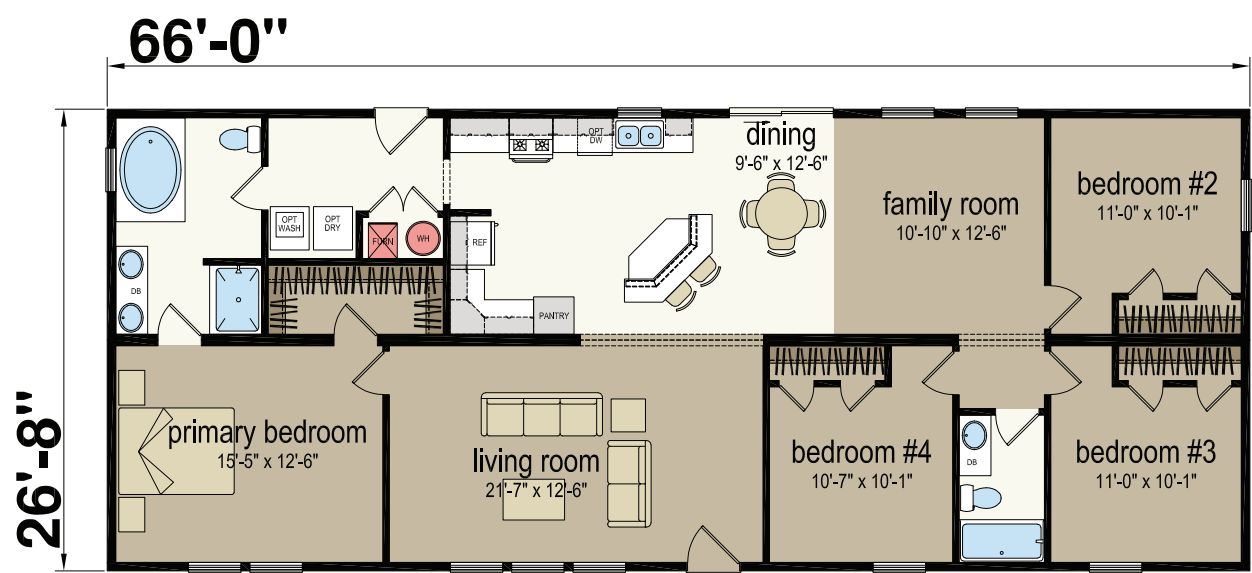
2864H32065 - 64' Version

Three Bed | Two Bath | 1,706 sq. ft.



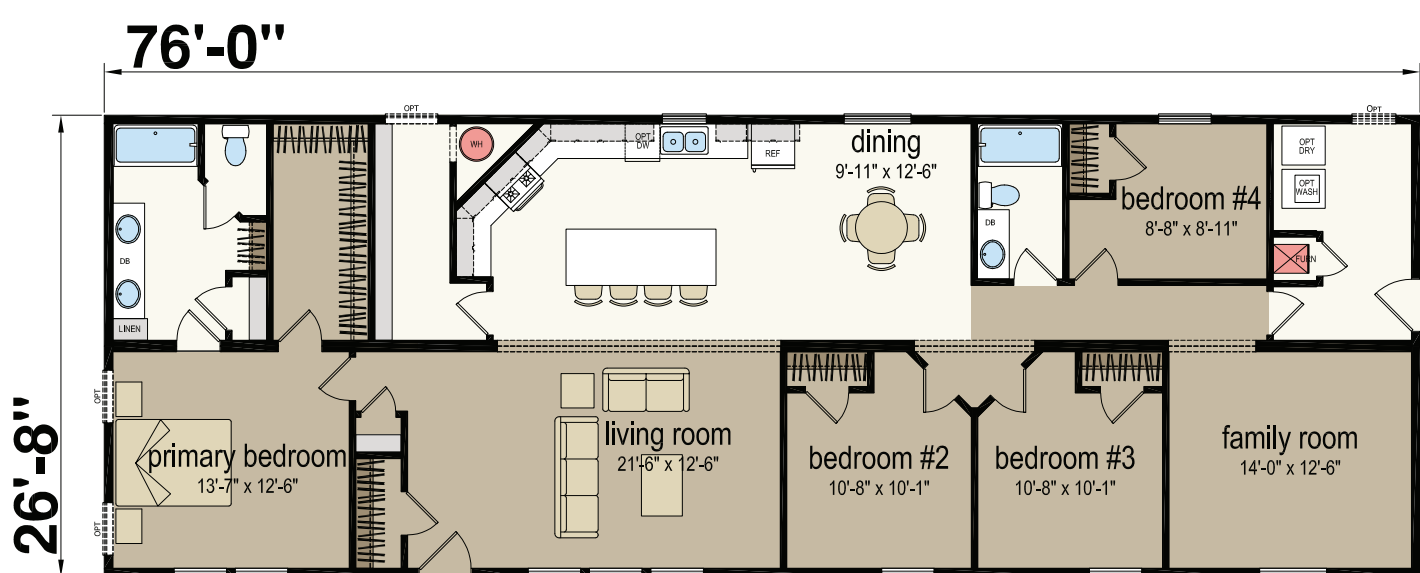
2866H42039

Four Bed | Two Bath | 1,760 sq. ft.



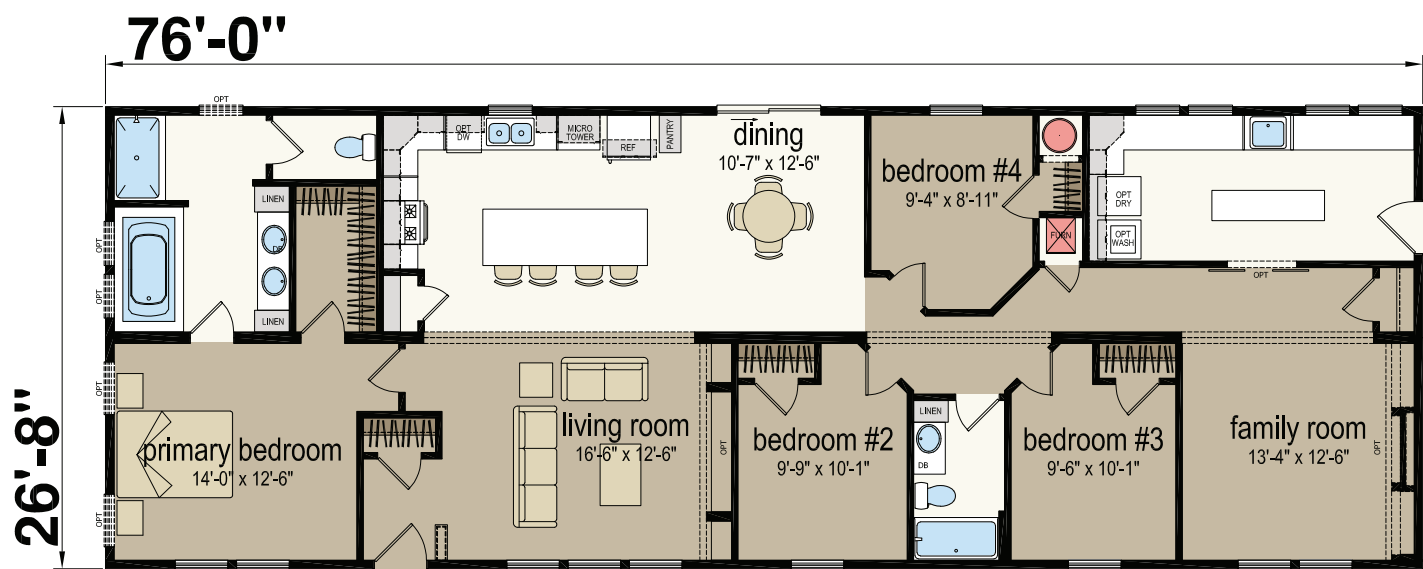
2876H42286

Four Bed | Two Bath | 2,026 sq. ft.



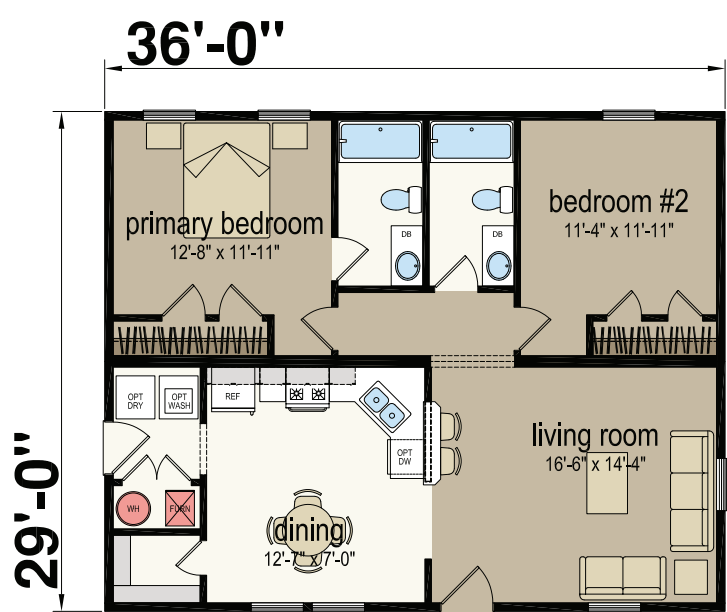
2876H42285-26-8w Version

Four Bed | Two Bath | 2,026 sq. ft.



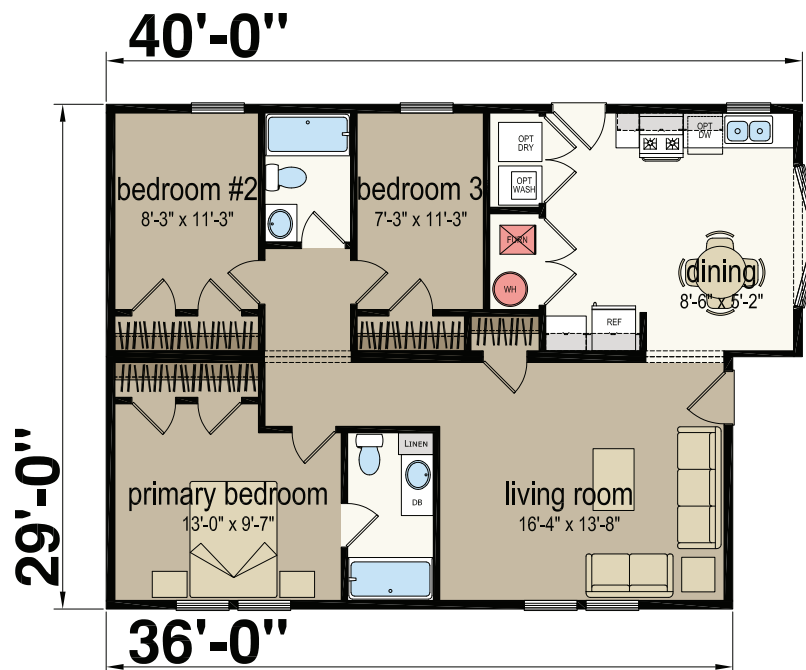
2936H22281

Two Bed | Two Bath | 1,044 sq. ft.



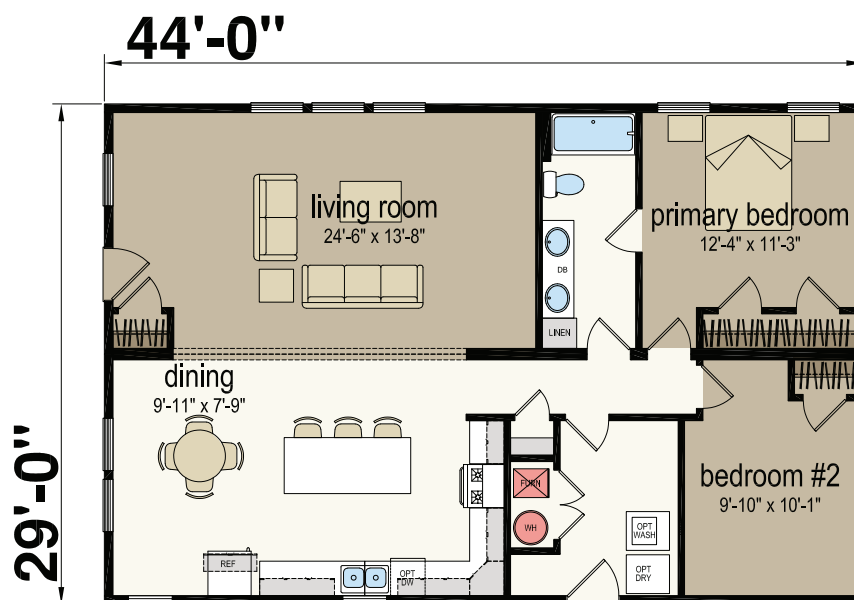
2940H32282

Three Bed | Two Bath | 1,102 sq. ft.



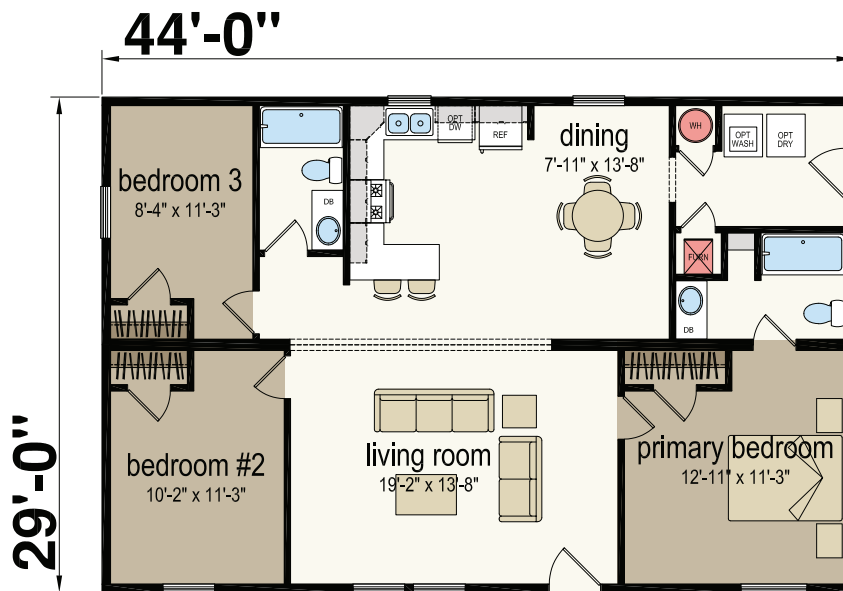
2944H21110

Two Bed | One Bath | 1,276 sq. ft.



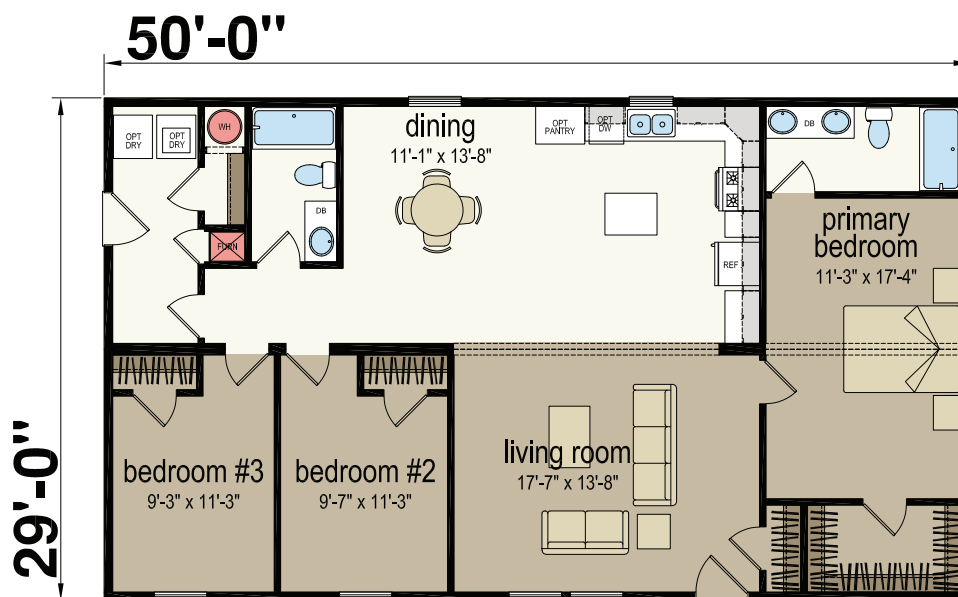
2944H32169

Three Bed | Two Bath | 1,276 sq. ft.



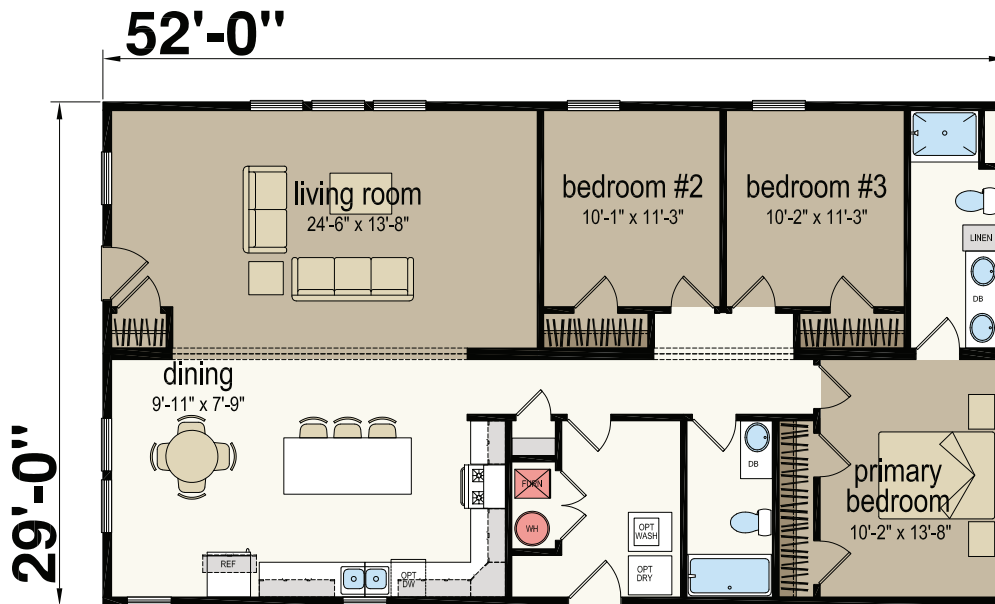
2950H32061

Three Bed | Two Bath | 1,450 sq. ft.



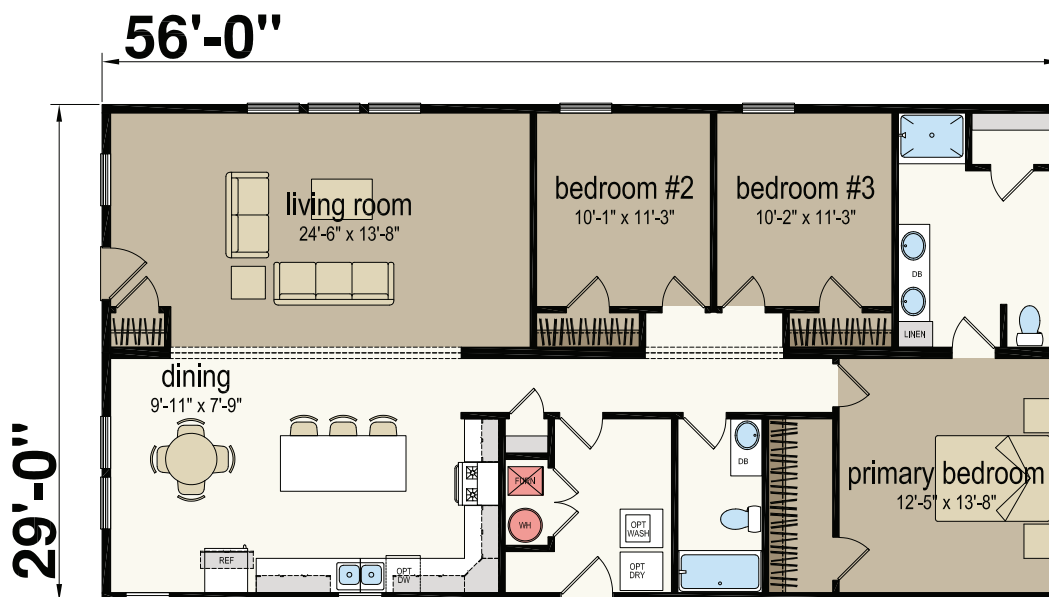
2952H32110-52'

Three Bed | Two Bath | 1,508 sq. ft.



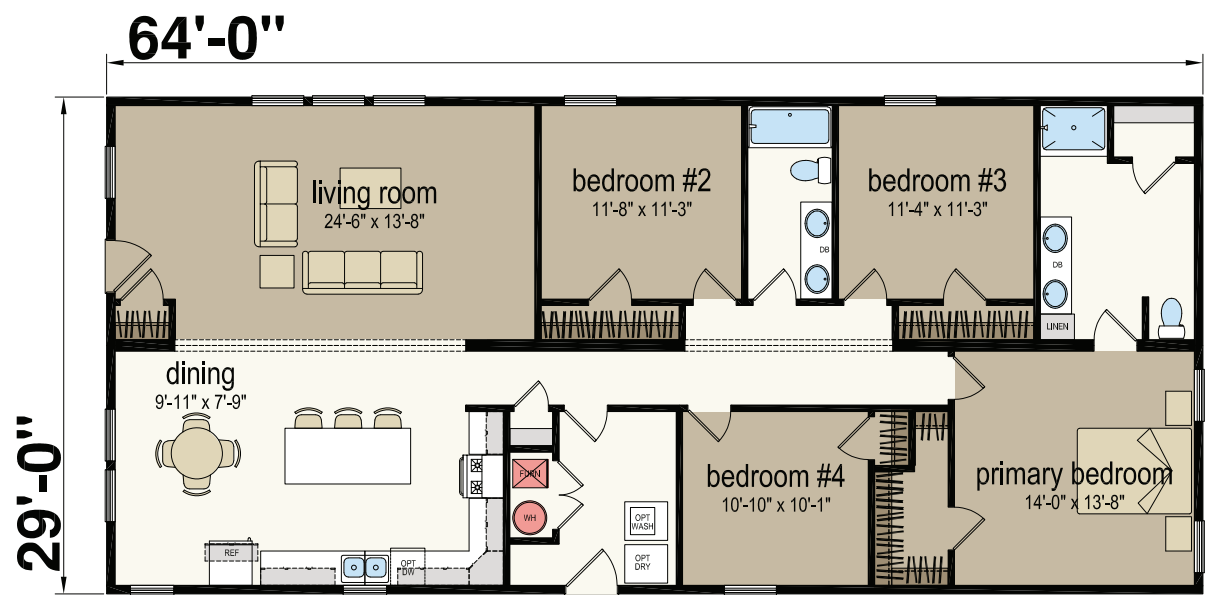
2956H32110-56'

Three Bed | Two Bath | 1,624 sq. ft.



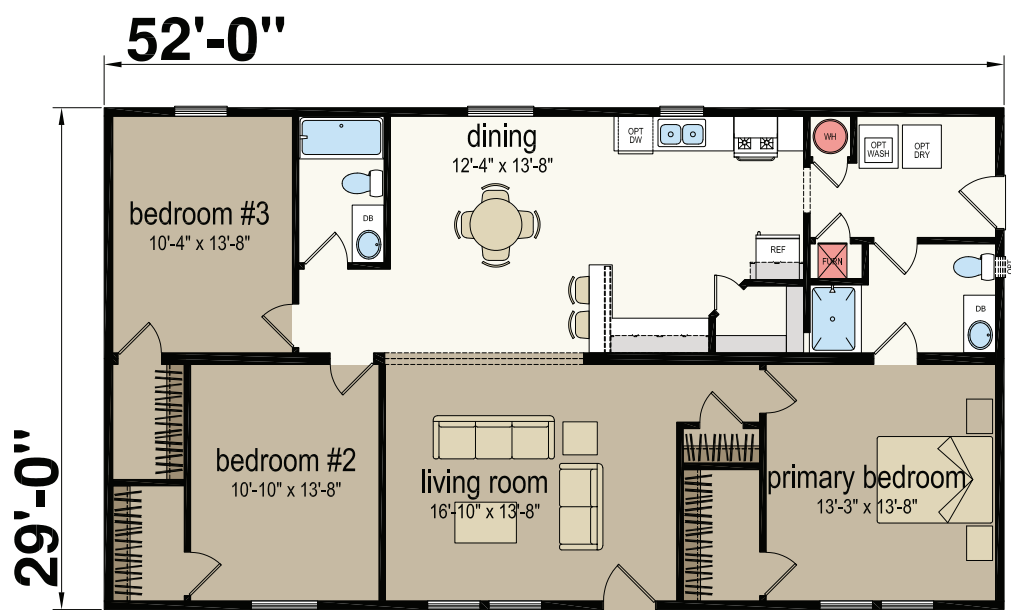
2964H32110-64'

Four Bed | Two Bath | 1,856 sq. ft.



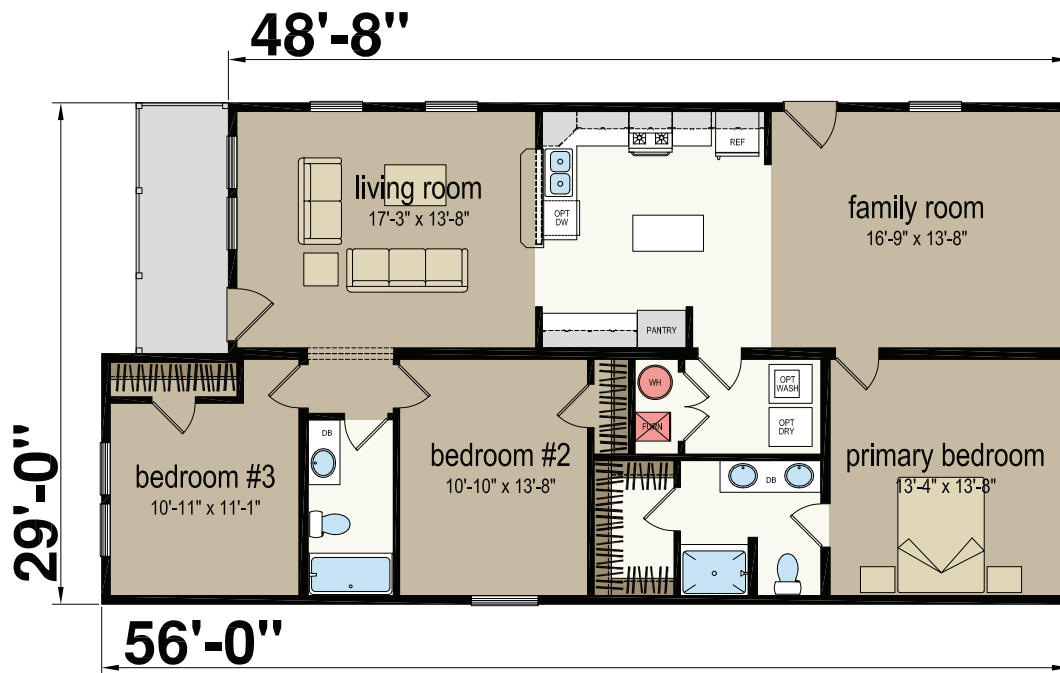
2952H32284

Three Bed | Two Bath | 1,508 sq. ft.



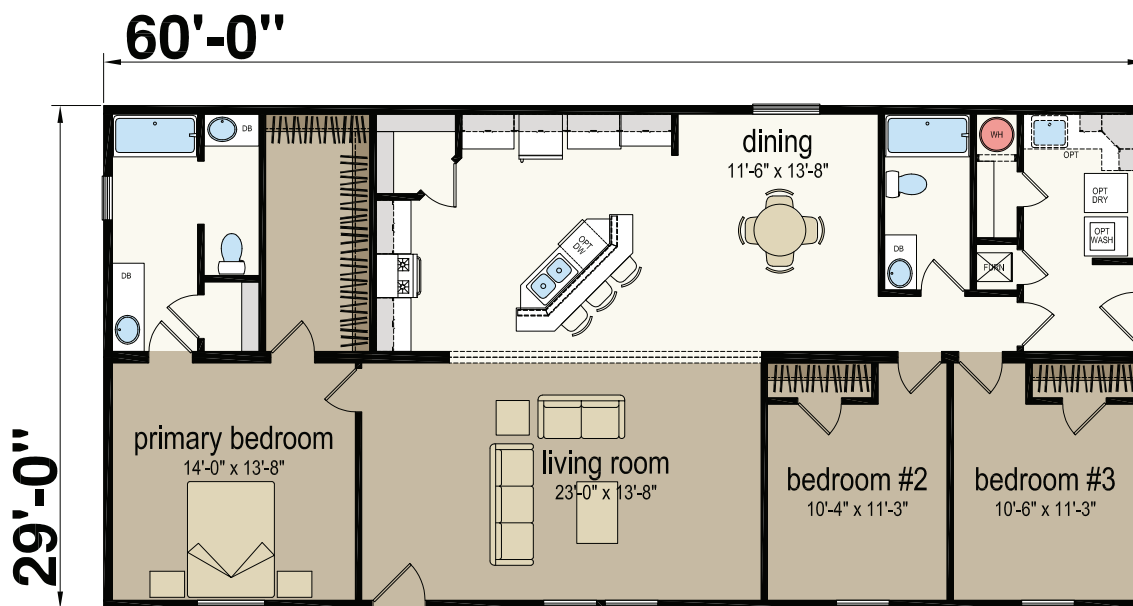
2956M32289

Three Bed | Two Bath | 1,518 sq. ft.



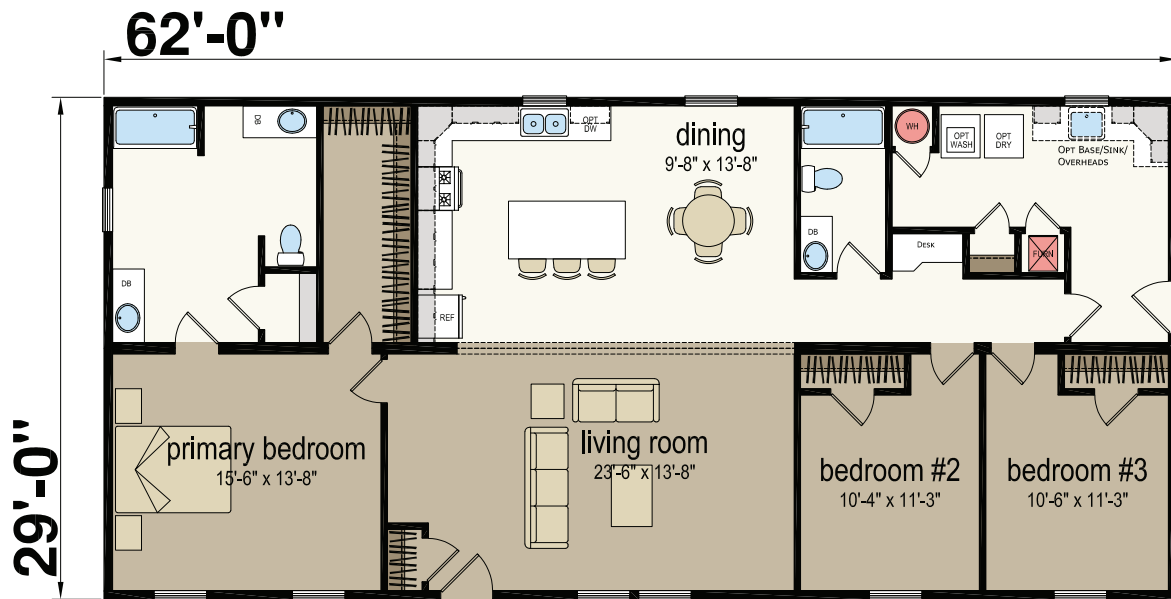
2960H32065-60' Version

Three Bed | Two Bath | 1,740 sq. ft.



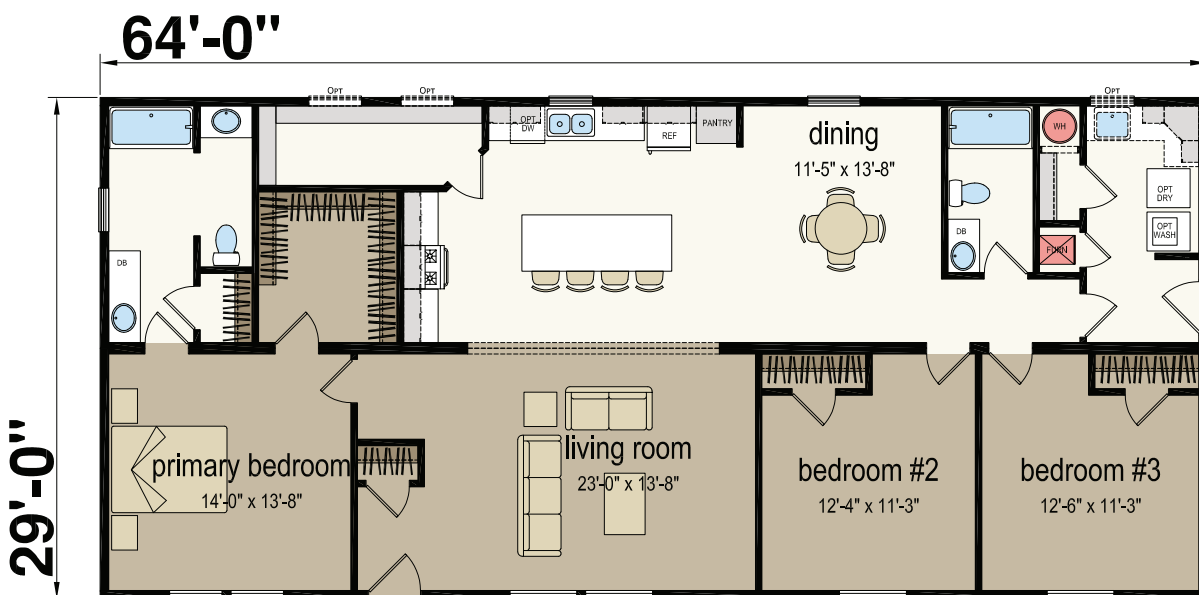
2962H32065-62' - Version

Three Bed | Two Bath | 1,798 sq. ft.

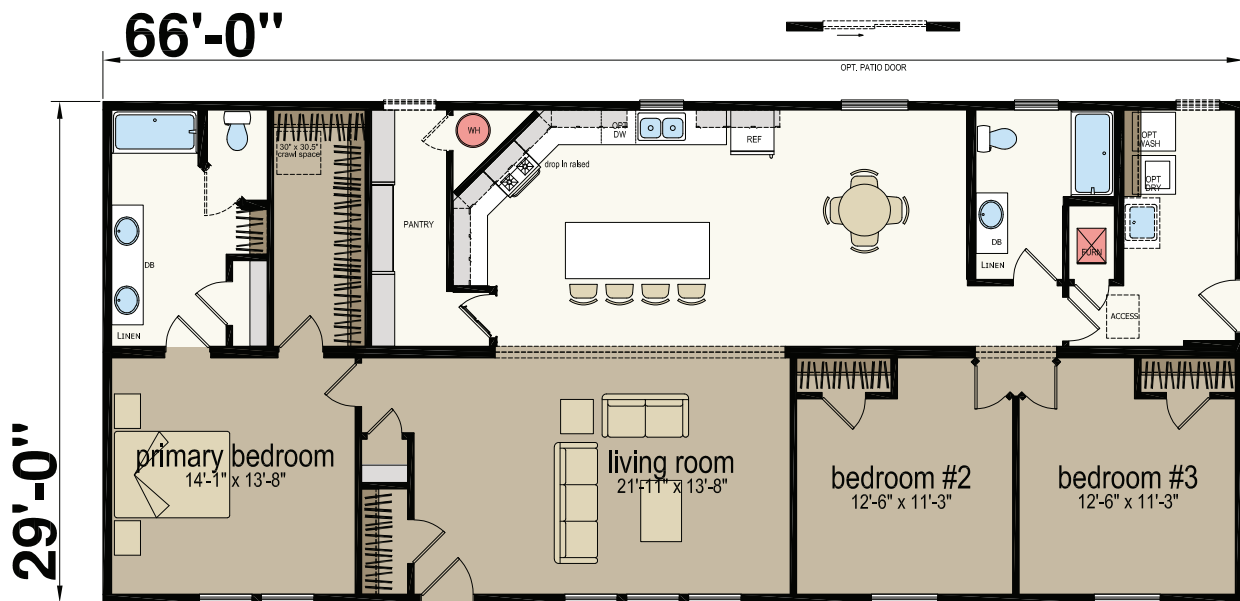


2962H32065-64' - Version

Three Bed | Two Bath | 1,856 sq. ft.

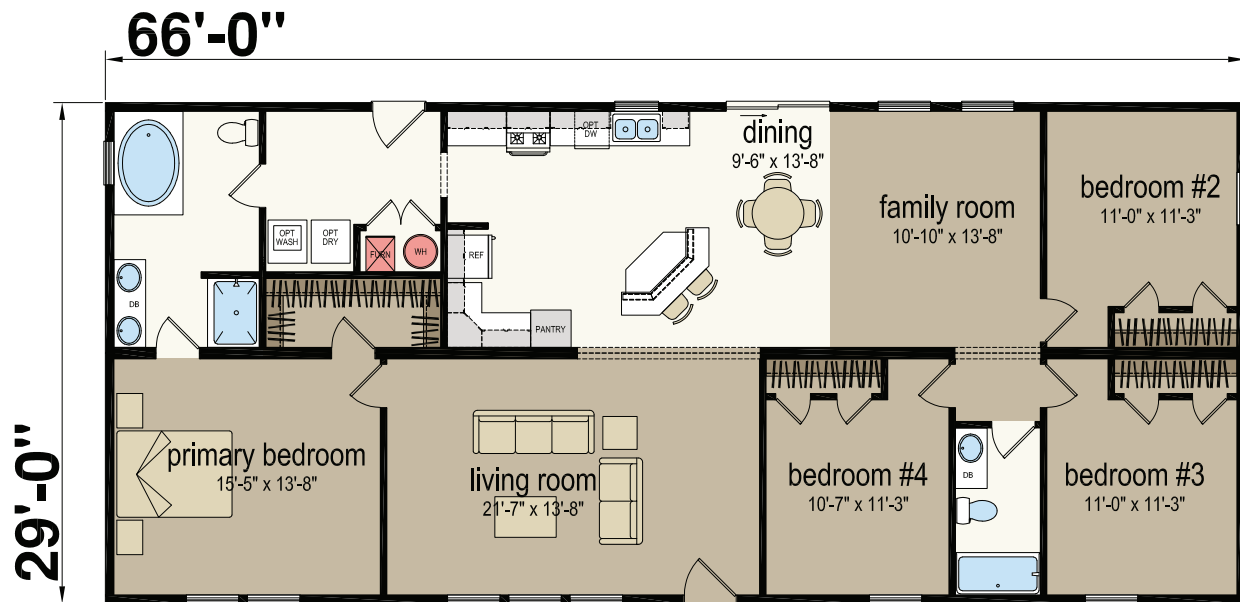


Three Bed | Two Bath | 1,914 sq. ft.



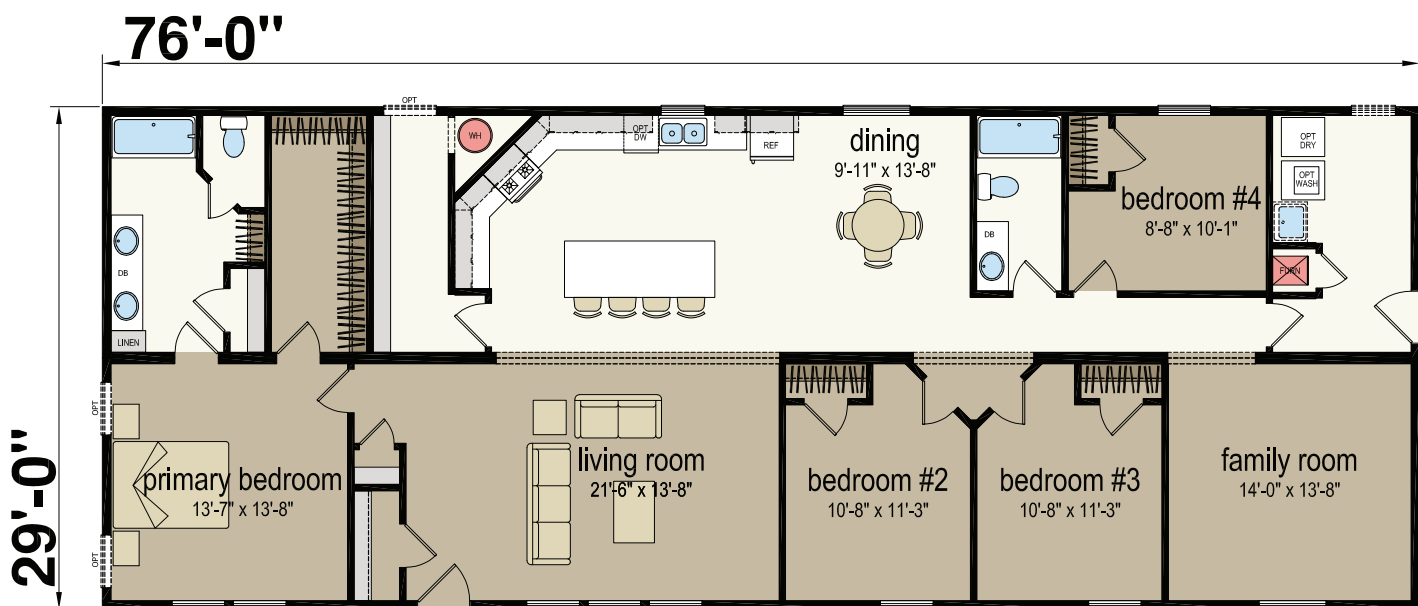
2966H42039-66'

Four Bed | Two Bath | 1,914 sq. ft.



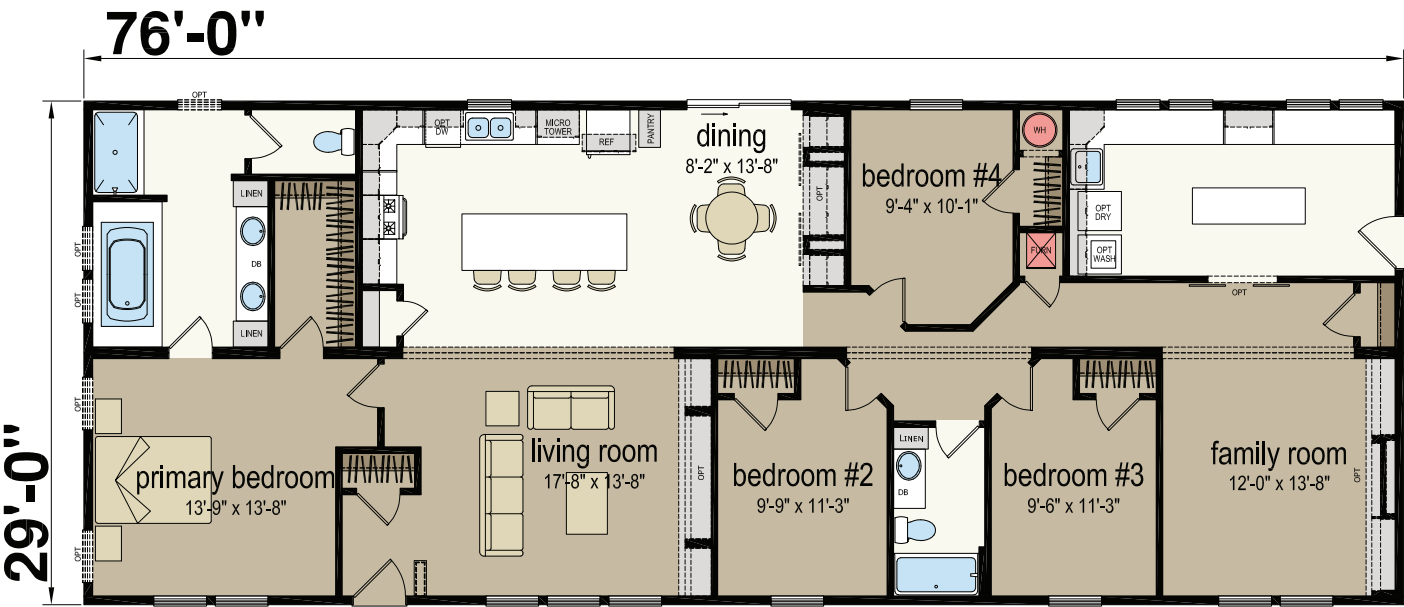
2976H32286

Four Bed | Two Bath | 2,204 sq. ft.



2976H42285-29' width Version

Four Bed | Two Bath | 2,204 sq. ft.



STANDARD FEATURES

Construction

- Vinyl Siding with OSB and House Wrap
- Vinyl Shutters (Front and Hitch End)
- 30 lb. 3:12 Roof Load (HUD)
- 40 lb. 3:12 Roof Load (MOD)
- Architectural Shingles
- Argon Filled Non-Grid White Windows
- Vented Eaves on All Sides
- 16" Eaves (DW)
- 36" x 80" Residential Door
- 36" x 80" Residential Door
- Black Down Facing Lights at All Exterior Doors
- 8' Side Walls with Flat Ceilings Throughout
- R-30 Ceiling Insulation
- R-38 Ceiling Insulation (MOD)
- 2x6 Exterior Walls with R-21 Insulation – 16" O.C.
- R-11 Floor Insulation (HUD)
- R-21 Perimeter Floor Insulation (MOD)
- 2x6 Floor Joists 16" O.C. (26'8" HUD)
- 2x8 Floor Joists 16" O.C. (29' HUD)
- 2x10 Floor Joists - 16" O.C. (MOD)
- 2x10 Double Perimeter Rim Joist
- Double 2x6 Top Plate and Single 2x6 Bottom Plate
- Triple 2x6 Window and Door Headers with Jack Studs
- (2) Exterior GFI Receptacles
- (2) Exterior Frost-Free Faucets
- Energy Efficient In-Line Heat Registers
- 5/8" Floor Decking (HUD)
- 3/4" Floor Decking (MOD)

Interior

- Luxury Vinyl Tile (Entry, Kitchen, Utility and Baths)
- 18 Ounce Carpet with Rebond Pad
- 2x4 24" O.C. Interior Walls (HUD)
- 16" O.C. Interior Load Bearing Walls (HUD)
- 2x4 16" O.C. Interior Walls (MOD)
- Painted White Trim
- 3-Panel White Interior Passage Doors
- Lever Door Handles
- Mortised Interior Door Hinges
- Wall Mounted Doorstops
- Tape and Textured Walls with Orange Peel Finish
- Drywall Ceiling with Orange Peel Finish
- LED Ceiling Lights
- Switched Can Light in Walk-In Closets
- Smoke Detectors (Per Plan)
- Carbon Monoxide Detector – Per State Code
- Wire Shelving in Closets
- Drapes in Living Room and Family Room (Per Plan)
- 2" Faux Wood Blinds – Select Window Sizes

Kitchen

- 21 Cu. Ft. Frost-Free Top Freezer Refrigerator – Stainless Steel
- 30" Coil Electric Range – Stainless Steel
- 30" Power Range Hood with Light – Black
- Stainless Steel Double-Bowl Sink
- Single-Lever Faucet
- Hardwood Cabinet Doors and Stiles
- Recessed Hidden Cabinet Door Hinges
- 5" Black Cabinet Pulls
- 3/4" Center Shelf in Base Cabinets
- Adjustable Shelves in Overhead Cabinets
- Laminate Countertop, Edge, and Backsplash
- 32" Overhead Cabinets with 28" Doors
- Bank of Drawers (Per Plan)
- Metal Drawer Guides

Baths

- Hardwood Cabinet Doors and Stiles
- 60" Fiberglass Tub/Shower (Per Plan)
- Primary Bath with Fiberglass Shower (Per Plan)
- Drawer Bank (Per Plan)
- Laminate Countertop, Edge, and Backsplash
- Vanity Light Over Vanity Mirror in Primary and Guest Bath
- Bath Vent Fan
- Towel and Tissue Holder
- China Sinks with Single-Lever Faucets
- Elongated Toilets

Utility

- 40/40 200 Amp Electric Panel
- Electric Furnace
- Digital Thermostat
- Plumb for Washer and Wire for Dryer
- 40-Gallon Electric Water Heater
- 3/4" Main Water Shut-Off Valve
- Water Shut-Off Valves to Sinks and Toilets
- Recessed Dryer Box on Interior Walls
- 12-2 Wiring in Wet Areas
- 14-2 Wiring in Dry Areas

CHAMPION®
HOME BUILDERS

Due to continuous product development and improvement, prices, specifications, and materials are subject to change without notice or obligation.



3200 Enterprise Ave
York, NE 68467

Championhomesyork.com