



# About us

**Redman Homes is one of the oldest and most respected homebuilders in America. Founded in 1937, Redman pioneered factory home construction and continues to lead advances in quality control, design and home value today. Through experience and innovation we've harnessed production line efficiency and, paired with our high-quality craftsmanship, created a process that delivers homes that meet our superior standards.**

## A place to call your own

Beyond just building you a house, we're committed to providing you and your family with a home to make memories in that will last a lifetime. Somewhere you can feel secure. A place you can call your own. A home that fits your lifestyle and has your own personal touch. Whether you're an active young family constantly on the go or empty nesters ready to simplify, just relax – we have a home that's right for you.

## More choice, more freedom

Our vast selection of floor plans, color choices and options give you the freedom to express your personal style and fit your home around your life.

## Building the best

We build each and every home to meet or exceed a strict national or state building code, and we set even higher standards for ourselves. Focusing on the things you don't see as well as the things you do, we monitor and inspect our homes at every stage of construction. From the plumbing system to the electrical wiring, from the kitchen cabinets to the closets in the bedrooms – every home we build undergoes rigorous quality inspections to ensure we're providing you with nothing but our best.

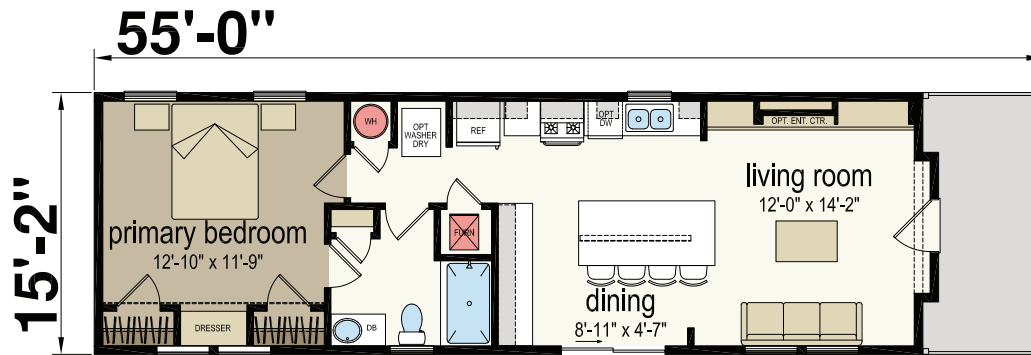
## The quality you expect

To build the best, we use the best. To meet your expectations of quality – and ours – we use only the highest-quality building materials and trusted national brand names. From insulation and fixtures to flooring and appliances, we only buy components from suppliers who share our commitment to quality. By using the best, we're confident we can build you a home with the lasting value you'll appreciate for years to come. Your housing consultant can tell you more about the specific brands used in our homes.



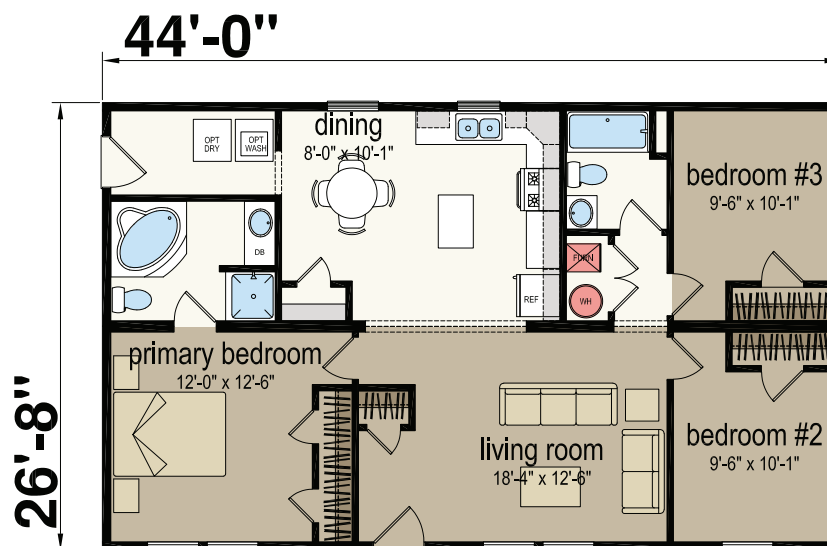
## 1655H11061

One Bed | One Bath | 736 sq. ft.



## 2844H32062

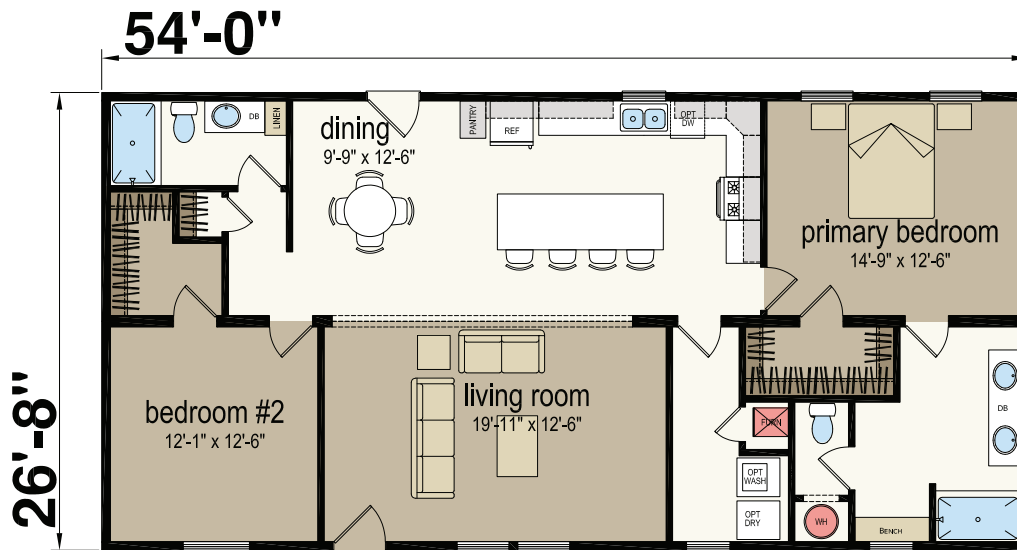
Three Bed | Two Bath | 1,173 sq. ft.





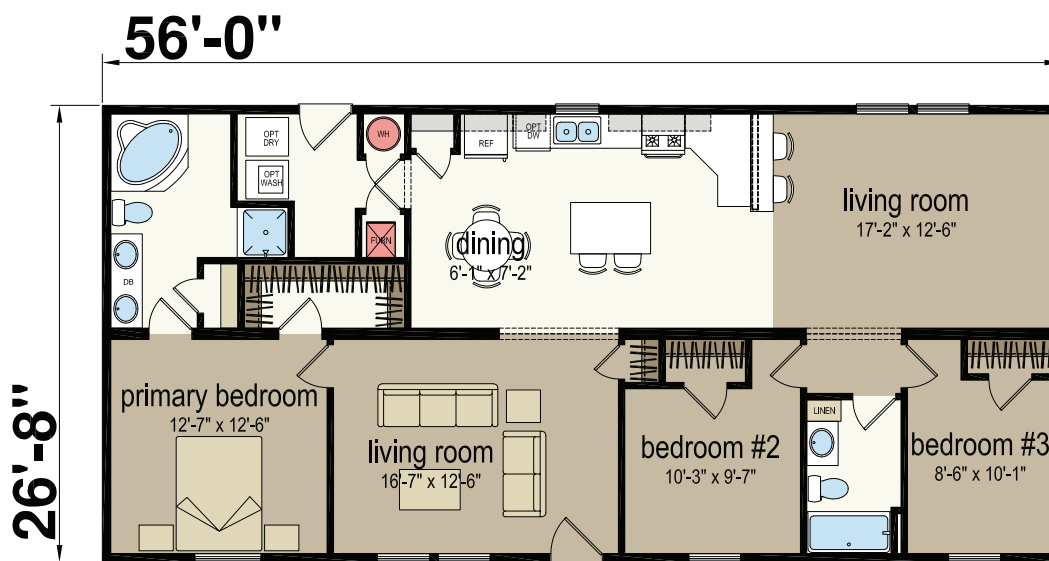
## 2854H22291

Two Bed | Two Bath | 1,440 sq. ft.



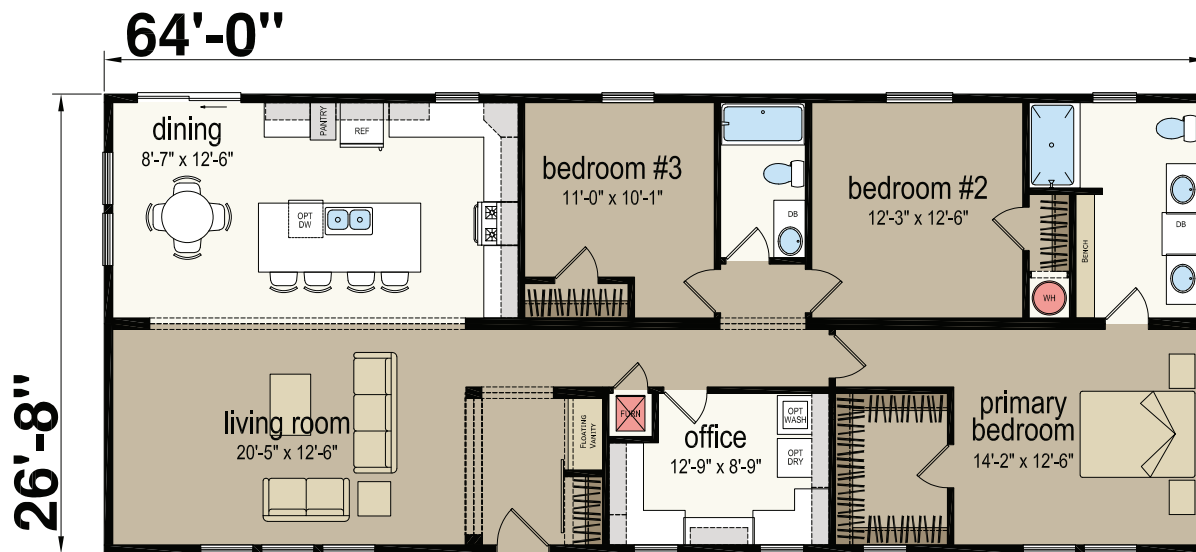
## 2856H32290

Three Bed | Two Bath | 1,493 sq. ft.



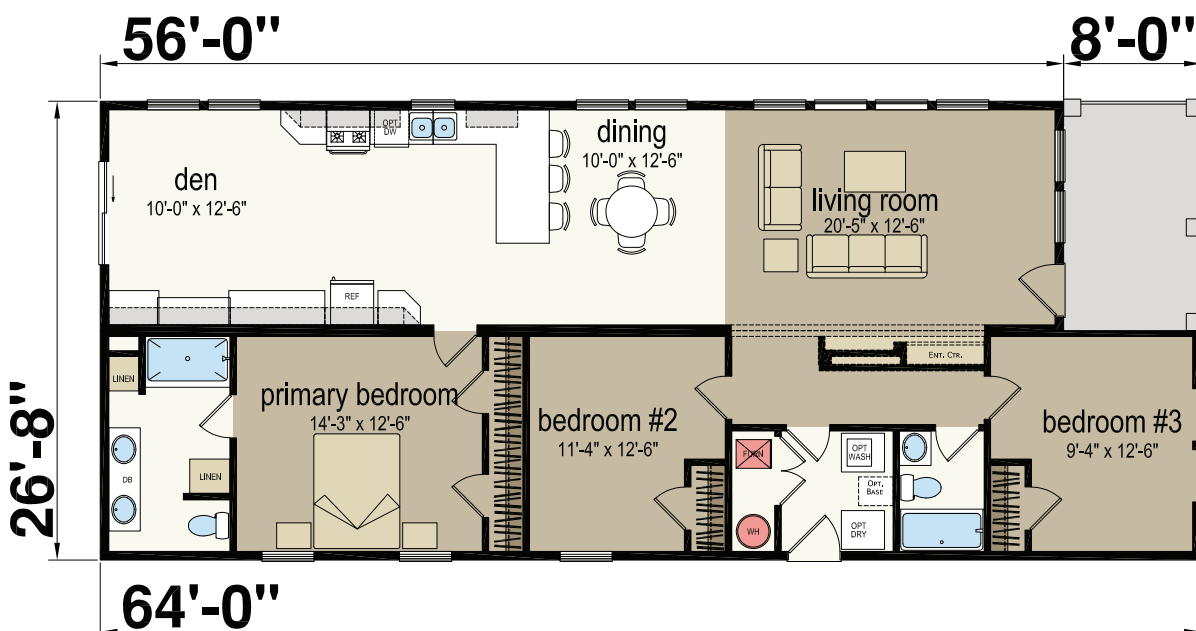
## 2864H32060

Three Bed | Two Bath | 1,706 sq. ft.



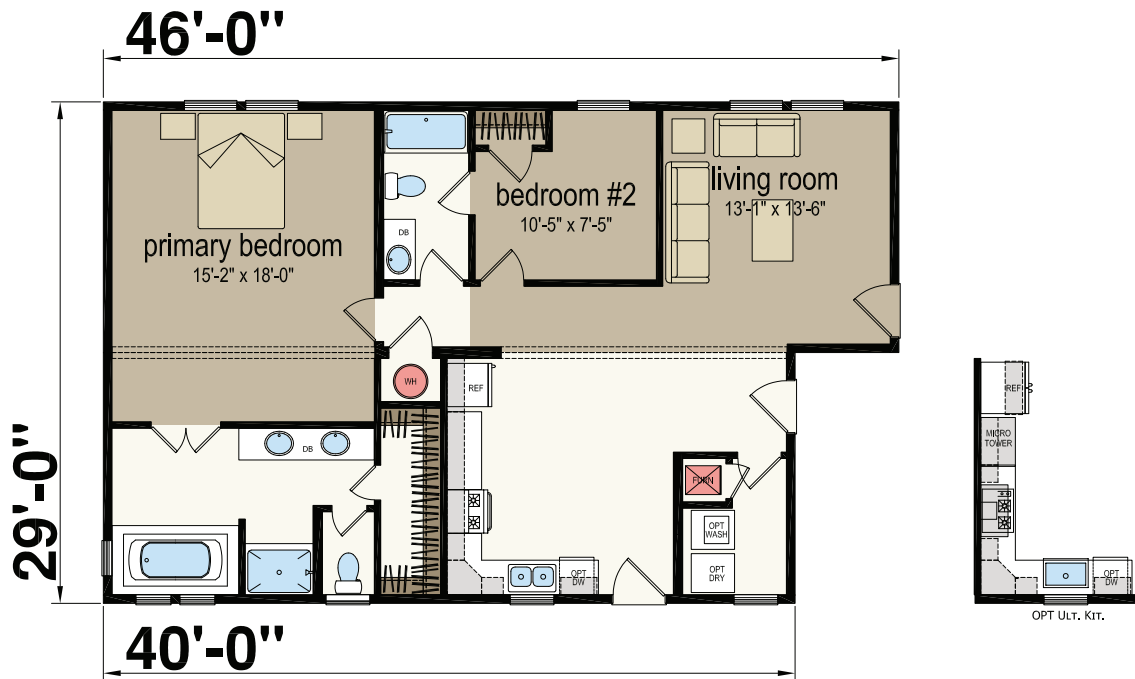
## 2864H32068

Three Bed | Two Bath | 1,604 sq. ft.



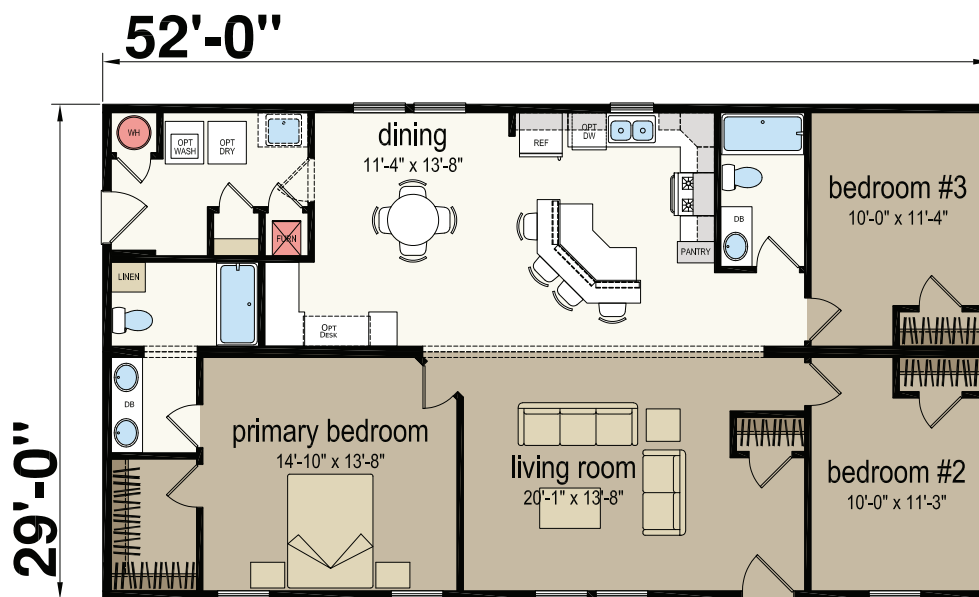
## 2946M22298

Two Bed | Two Bath | 1,247 sq. ft.



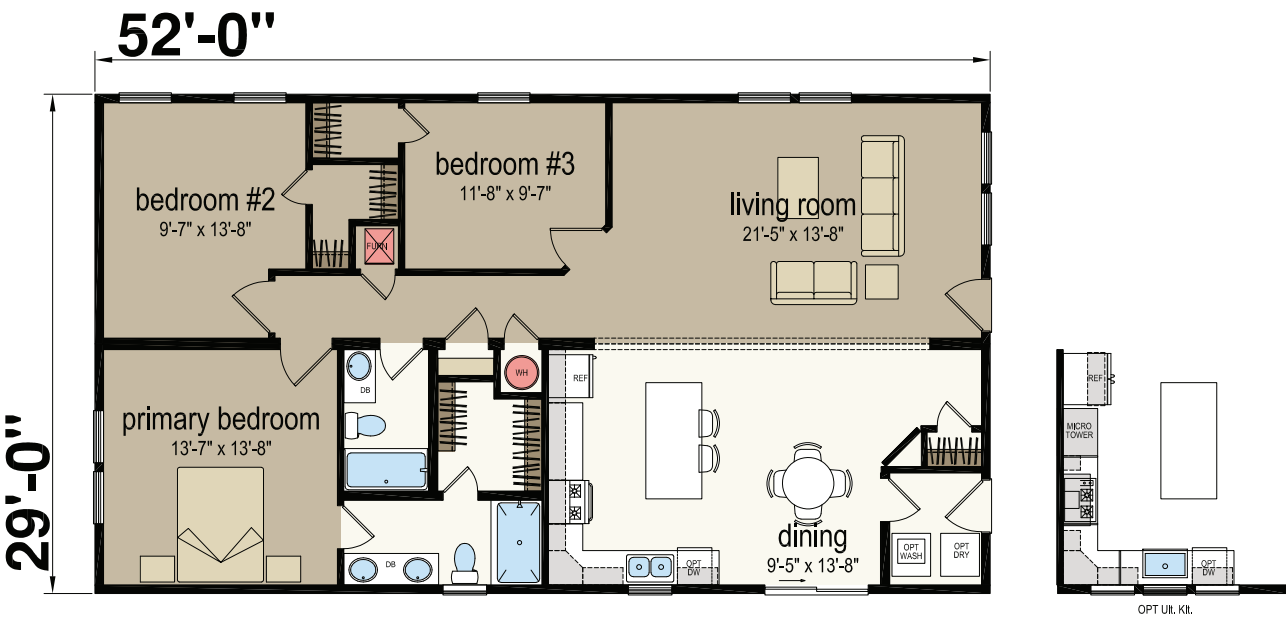
## 2952H32062

Three Bed | Two Bath | 1,508 sq. ft.



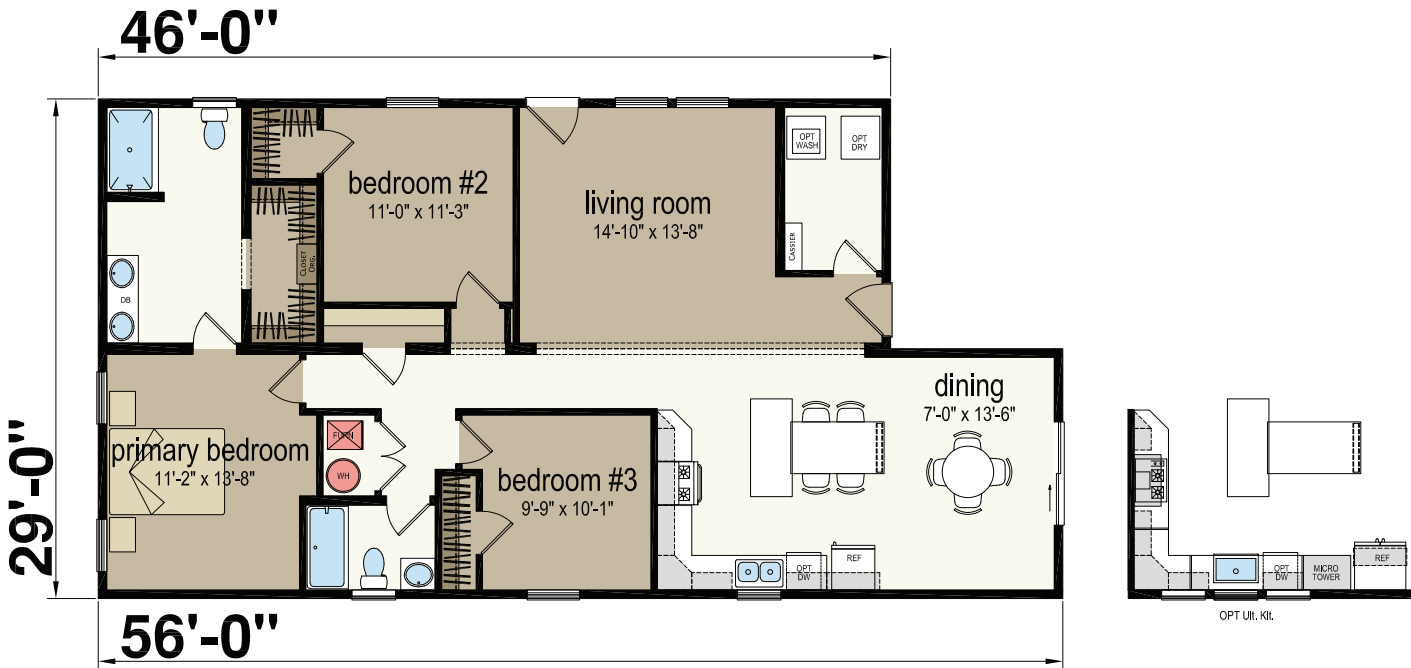
2952M32300

Three Bed | Two Bath | 1,508 sq. ft.



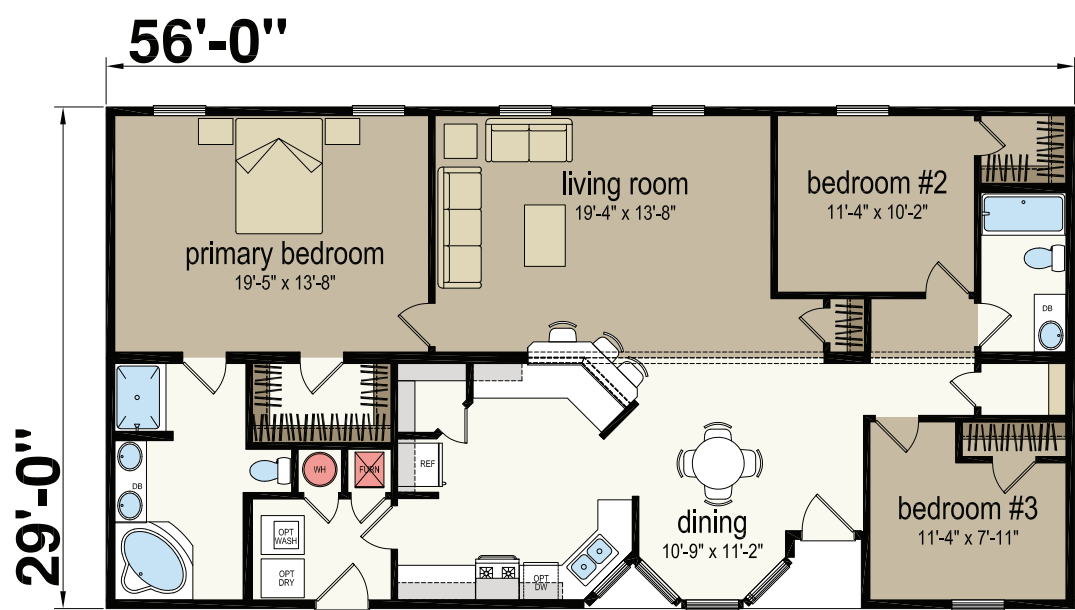
2956M32299

Three Bed | Two Bath | 1,479 sq. ft.



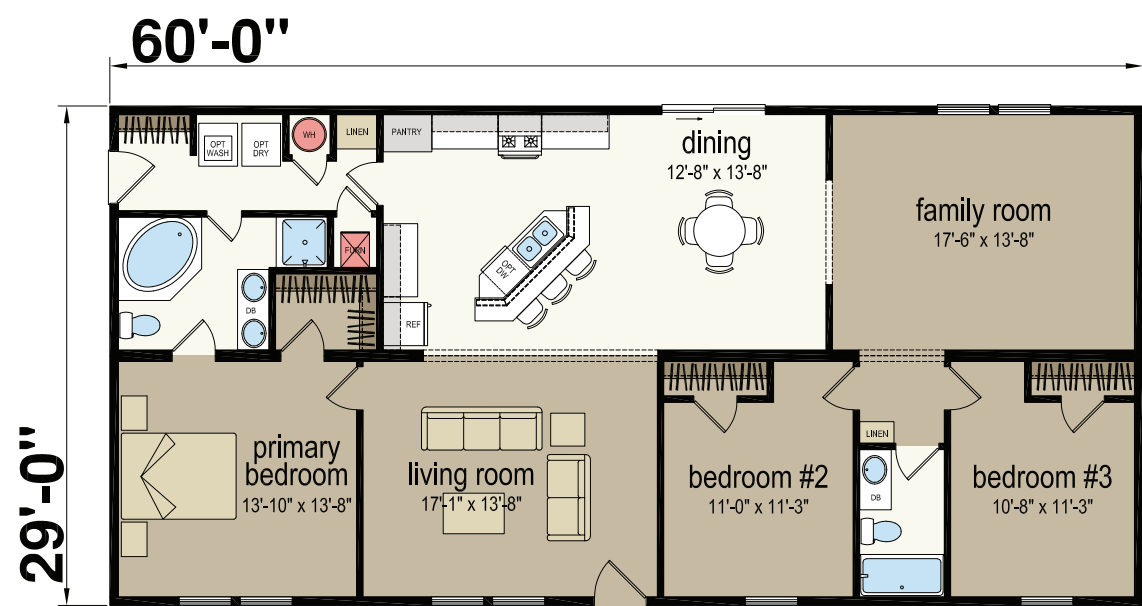
2956M32292

Three Bed | Two Bath | 1,598 sq. ft.



2960H32034

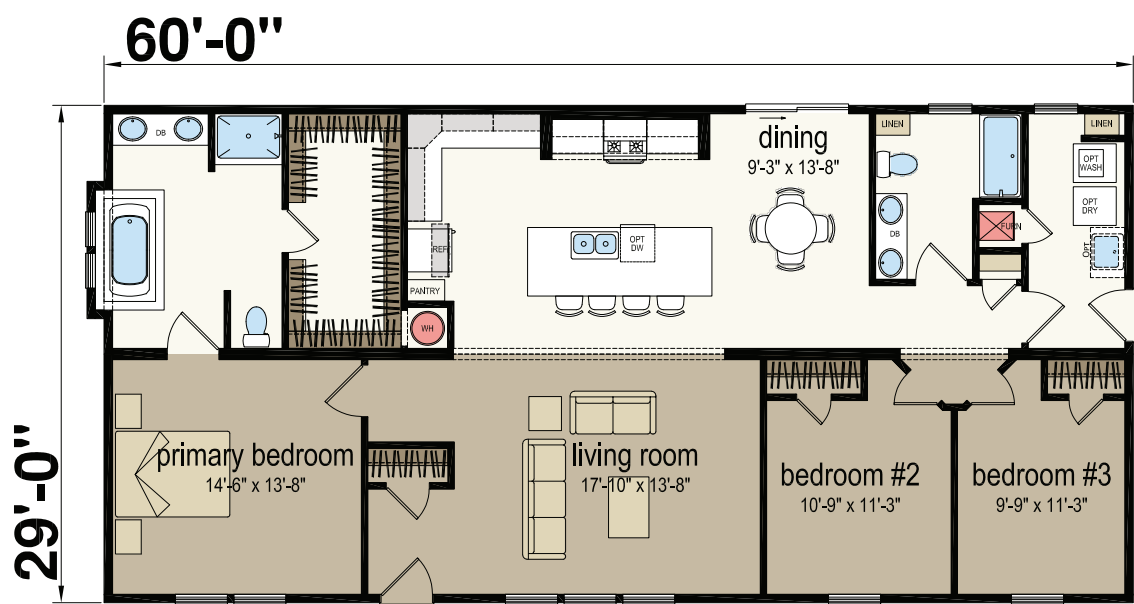
Three Bed | Two Bath | 1,740 sq. ft.





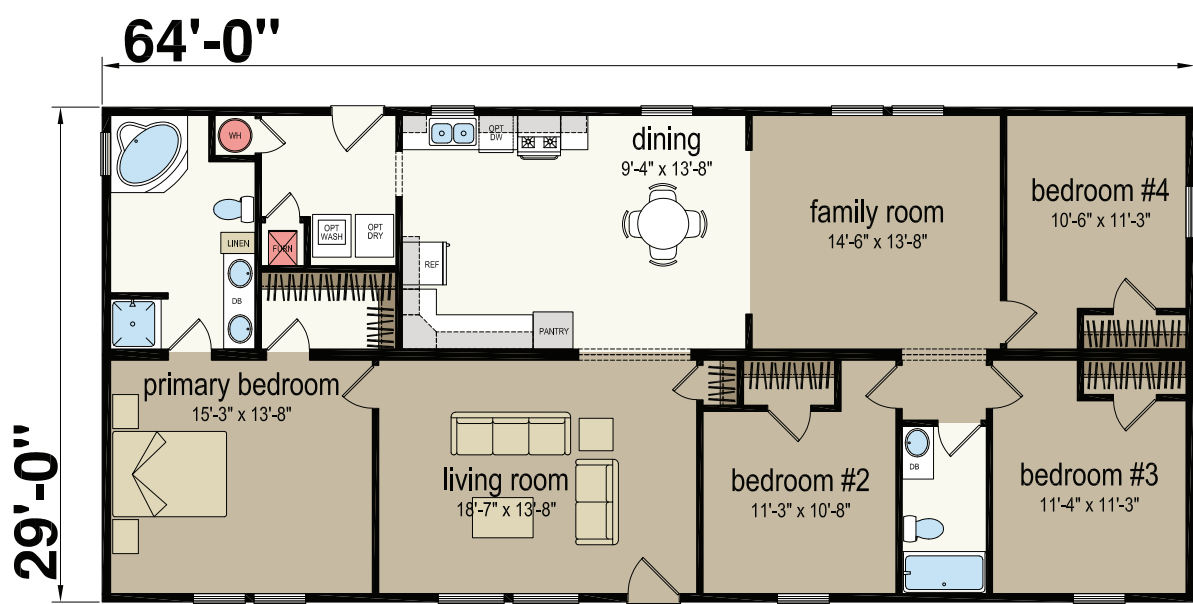
2960H32296

Three Bed | Two Bath | 1,748 sq. ft.



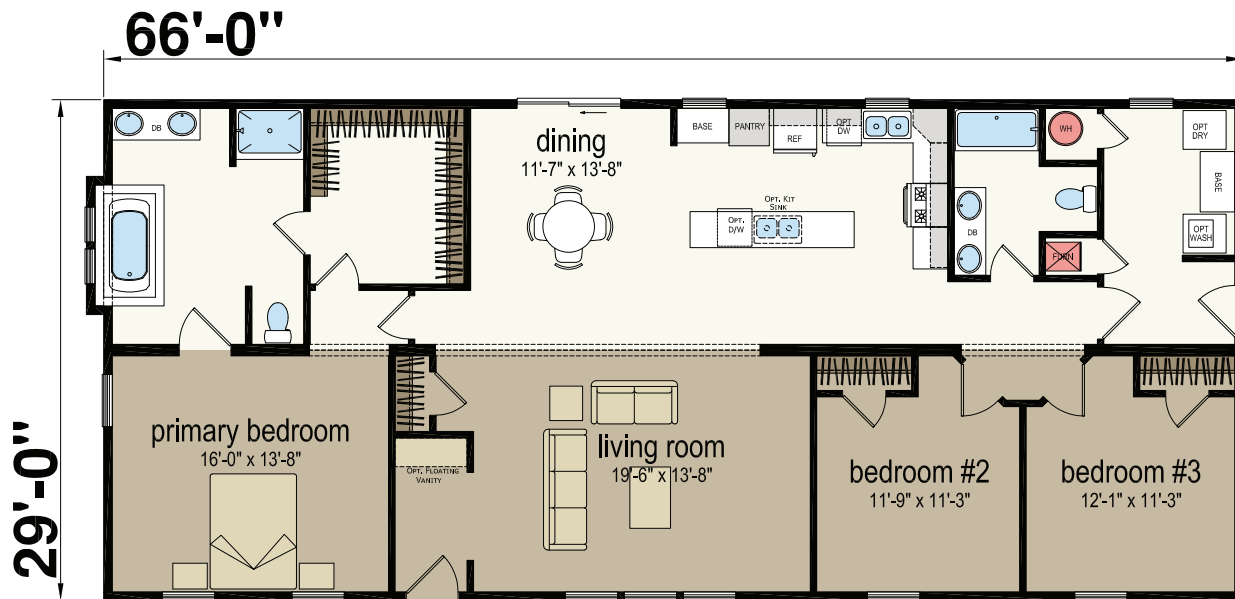
2964H42293

Four Bed | Two Bath | 1,856 sq. ft.



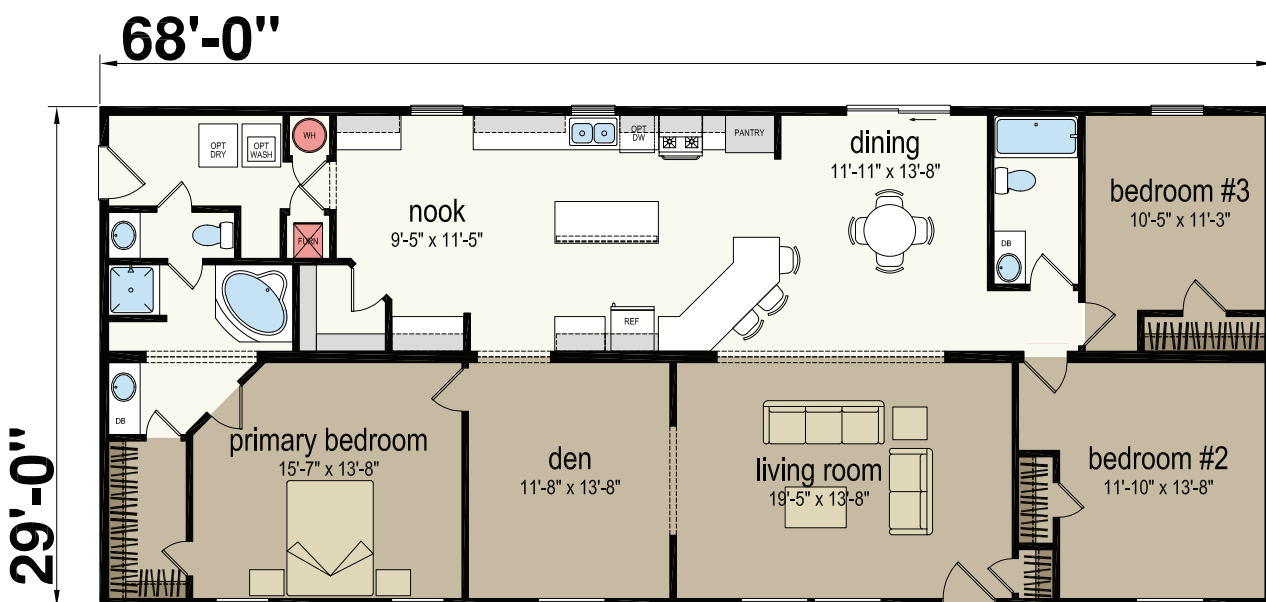
## 2966H32175

Three Bed | Two Bath | 1,922 sq. ft.



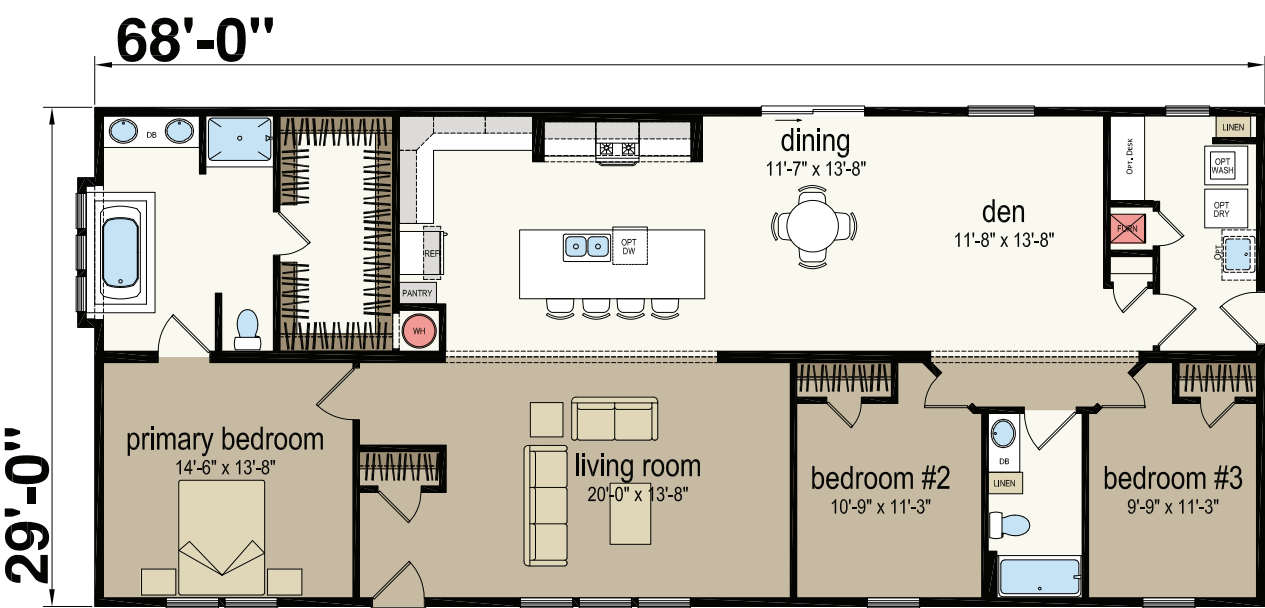
## 2968H32173

Three Bed | Two Bath | 1972 sq. ft.



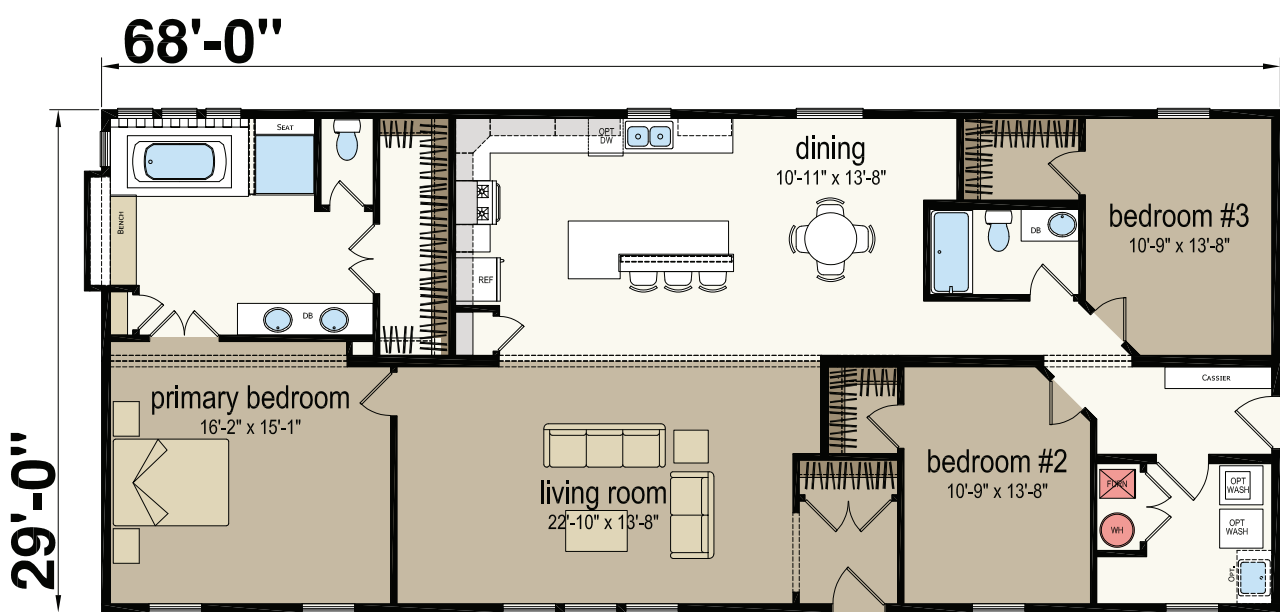
2968H32297

Three Bed | Two Bath | 1,980 sq. ft.



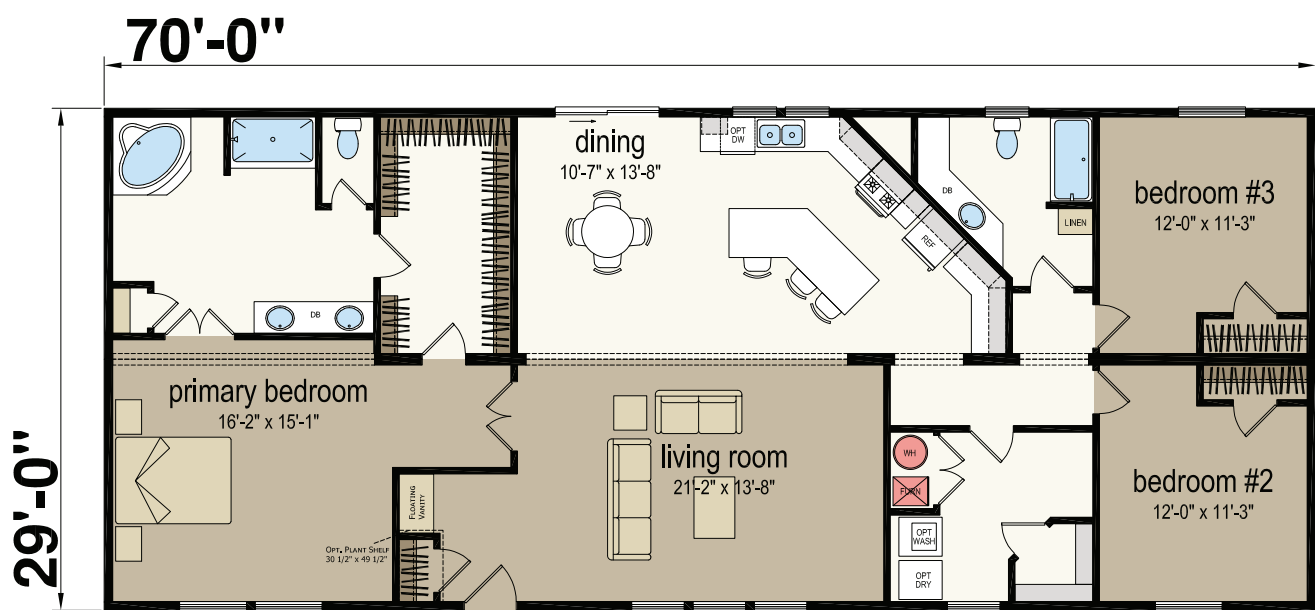
2968M32178

Three Bed | Two Bath | 1,979 sq. ft.



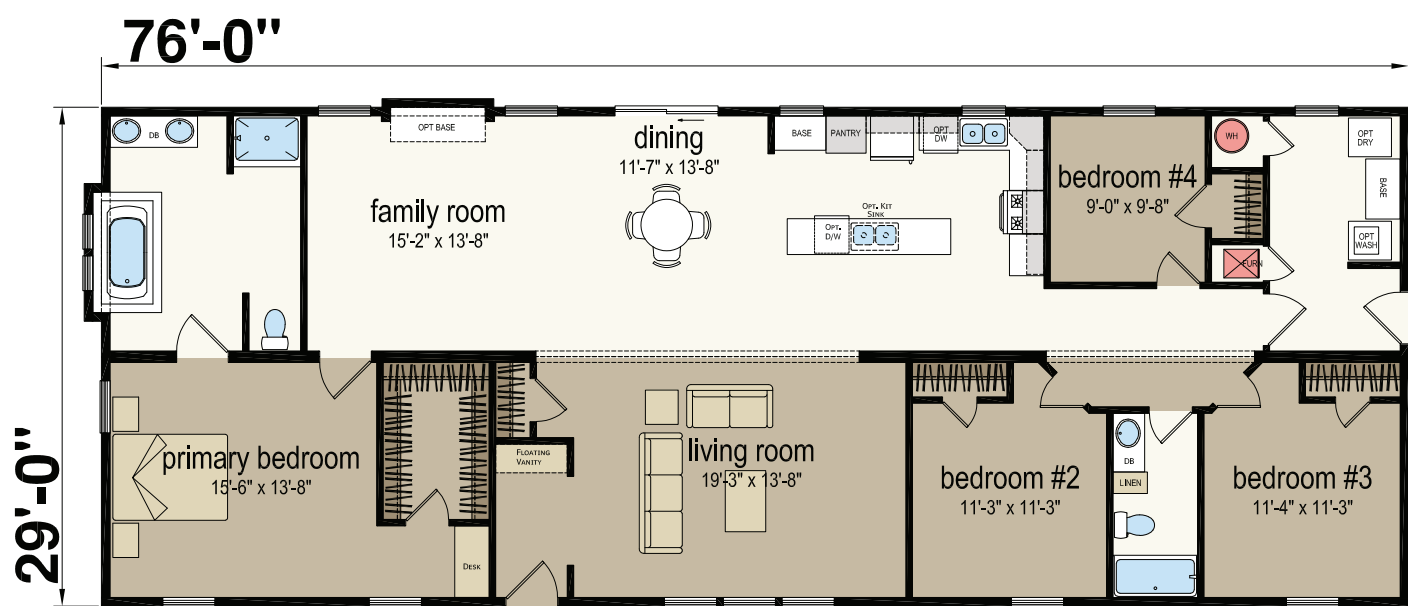
2970H32309

Three Bed | Two Bath | 2,030 sq. ft.



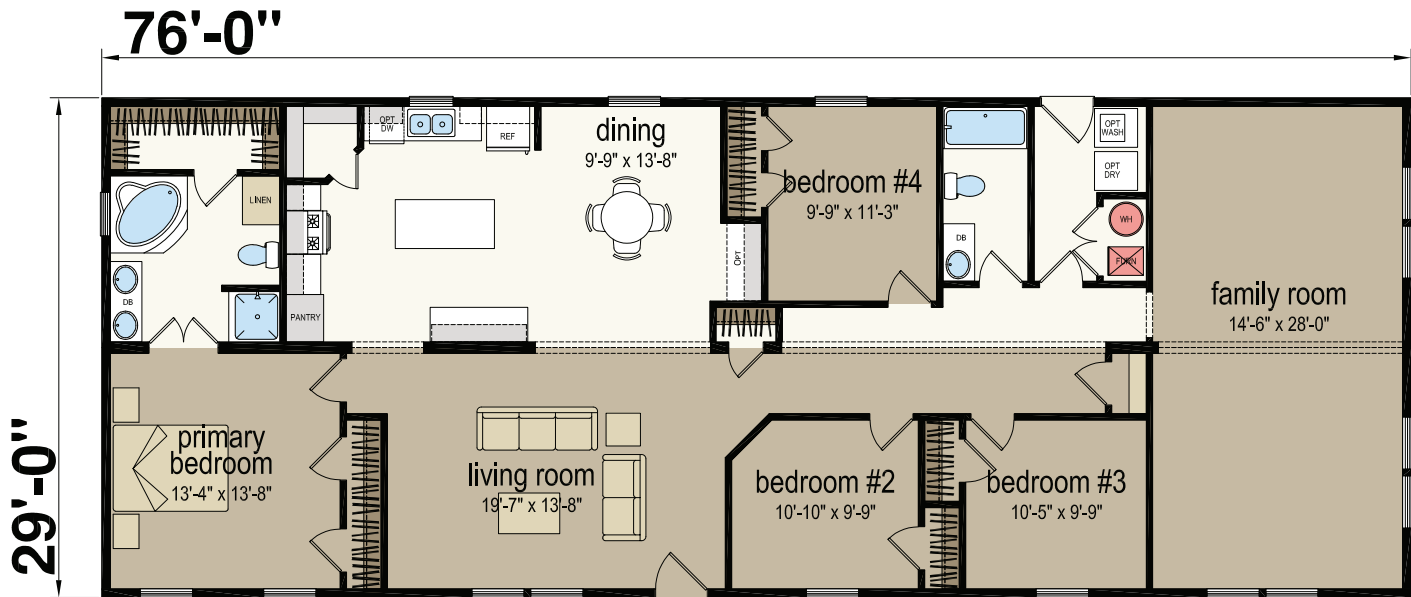
2976H42211

Four Bed | Two Bath | 2,212 sq. ft.



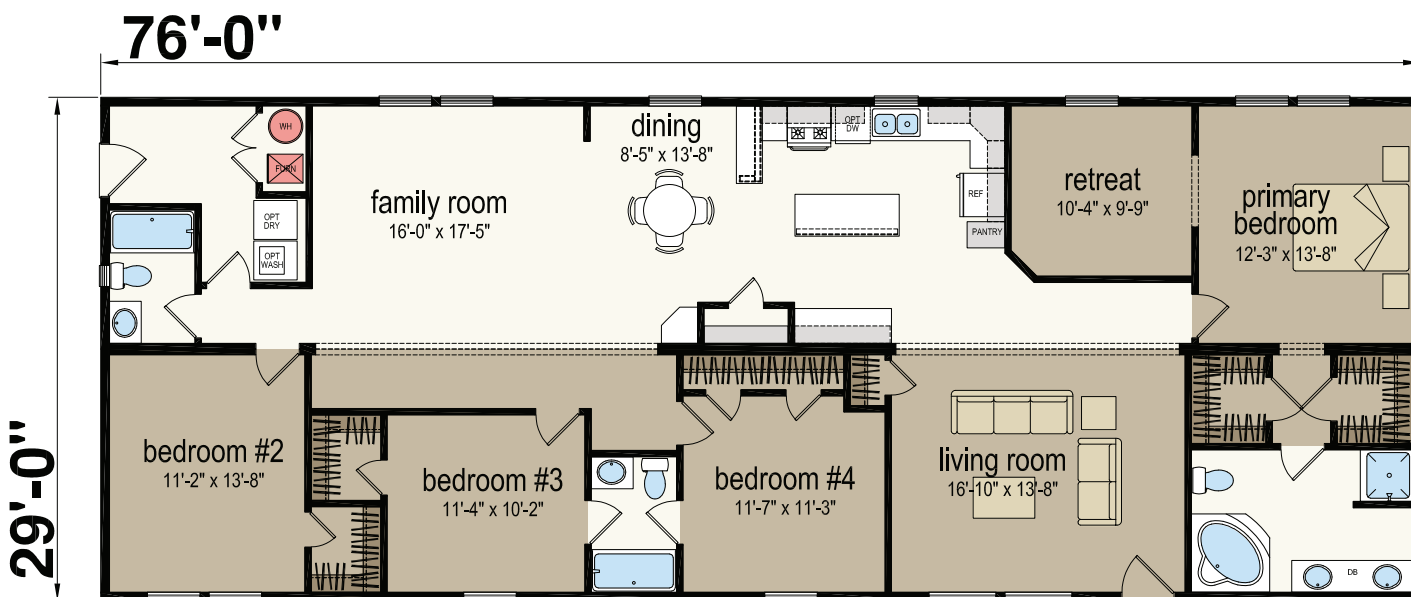
2976H42273

Four Bed | Two Bath | 2,204 sq. ft.



2976H43294

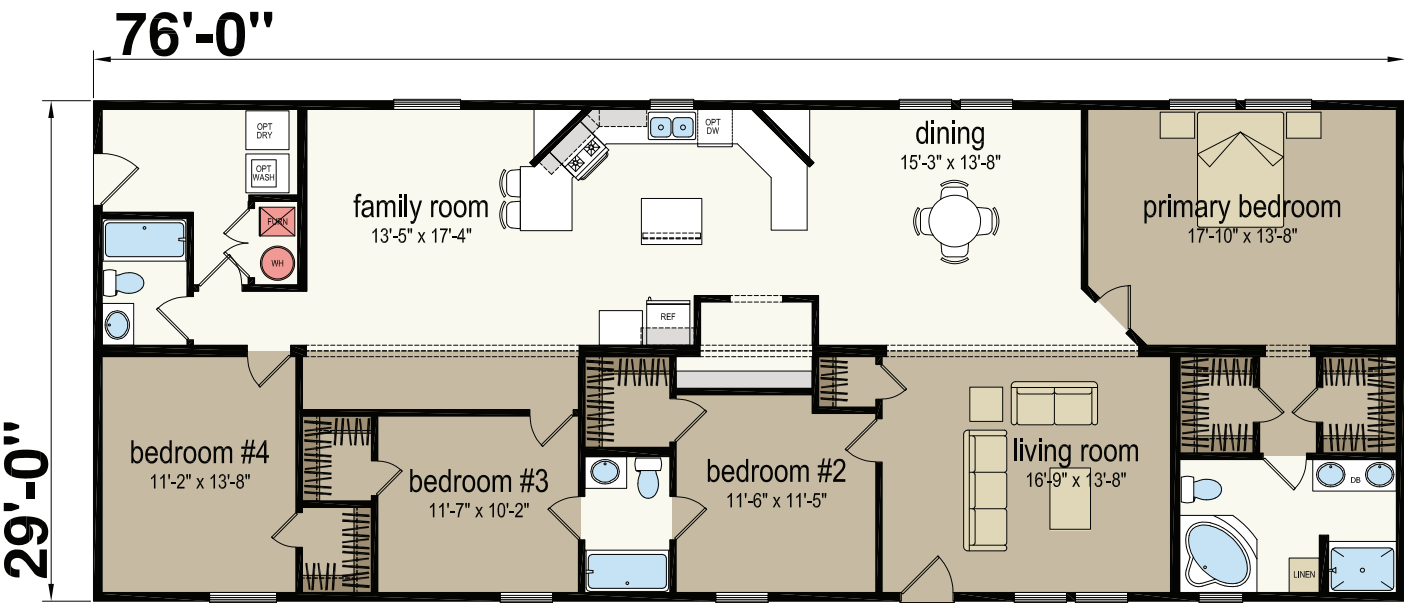
Four Bed | Three Bath | 2,204 sq. ft.





2976M43295

Four Bed | Three Bath | 2,204 sq. ft.



# STANDARD FEATURES

---

## Construction

- 16" Overhang
- A Dormer (8' Sidewalls)
- S Dormer (9' Sidewalls)
- Vinyl Siding with OSB and House Wrap
- Vinyl Shutters (Front and Hitch End)
- 30 lb. Roof Load with 3/12 Pitch (HUD)
- 40 lb. Roof Load with 5/12 Pitch (MOD)
- Architectural Shingles
- Argon Filled Non-Grid White Windows
- LP® SmartSide® Fascia and Vented Vinyl Soffit
- 36" x 80" Residential Door
- 36" x 80" Residential Door
- Black Down Facing Light at All Exterior Doors
- 8' Flat Ceiling Throughout
- R-30 Ceiling Insulation (DW HUD)
- R-38 Ceiling Insulation (MOD)
- 2x6 Exterior Walls with R-21 Insulation – 16" O.C.
- R-22 Floor Insulation (HUD)
- R-21 Perimeter Floor Insulation (MOD)
- 2x6 Floor Joists (26'-8" WIDE HUD)
- 2x8 Floor Joists (29' WIDE HUD)
- 2x10 Floor Joists - 16" O.C. (MOD)
- 2x10 Double Perimeter Rim Joist
- Double 2x6 Top Plate and Single 2x6 Bottom Plate
- Triple 2x6 Window & Door Headers w/ Jack Studs
- 2x4 – 24" O.C. Interior Walls (HUD)
- 2x4 - 16" O.C. Interior Walls (MOD)
- (2) Exterior GFI Receptacles
- (2) Exterior Frost-Free Faucets
- Perimeter Floor Mounted Heat Registers

## Interior

- Luxury Vinyl Tile (Entry, Kitchen, Utility and Baths)
- 18 oz Carpet with Rebond Pad
- Painted White Trim Throughout
- 3-Panel White Interior Passage Doors
- Lever Door Handles
- Mortised Interior Door Hinges
- Wall Mounted Doorstops
- 1/2" Drywall on Walls with Orange Peel Finish
- LED Ceiling Lights
- 5/8" Ceiling Drywall with Orange Peel Finish
- Chandelier in Dining Room (Per Plan)
- Switched Can Light in Walk-In Closets
- Smoke Detectors (Per Plan)
- Carbon Monoxide Detector – Per State Code
- Wire Shelving in Closets
- Drapes in Living Room and Family Room (Per Plan)
- 2" Faux Wood Blinds – Select Window Sizes

## Kitchen

- 21 Cu.Ft. Frost-Free Top Freezer Refrigerator – Stainless Steel
- 30" Smooth-Top, Self-Cleaning Electric Range- Stainless Steel
- 30" Power Range Hood with Light in Black
- Front Control Dishwasher
- Stainless Steel Double-Bowl Sink
- Hardwood Cabinet Doors and Stiles
- Recessed Hidden Cabinet Door Hinges
- 5" Black Cabinet Pulls
- 3/4" Center Shelf in Base Cabinets
- Lined Overhead and Base Cabinets
- Laminate Countertops
- Crescent Edging and Ceramic Backsplash
- 30" Overhead Cabinets with Adjustable Shelves
- Drawer Over Door Cabinet Design
- Metal Drawer Guides

## Baths

- Hardwood Cabinet Doors and Stiles
- 60" Fiberglass Tub/Shower (Per Plan)
- Primary Bath with Fiberglass Shower (Per Plan)
- Drawer Bank (Per Plan)
- Laminate Countertops
- Crescent Edging and Ceramic Backsplash
- Vanity Light Over Vanity Mirror in Primary and Guest Bath
- Bath Vent Fan with Light
- Towel and Tissue Holder
- China Sinks with Single Lever Faucets
- Elongated Toilets

## Utility

- 40/40 200 Amp Electrical Panel
- Plumb for Washer and Wire for Dryer
- 40-Gallon Electric Water Heater
- Main Water Shutoff Valve
- Water Shutoff Valves to Sinks and Toilets
- Recessed Dryer Box on Interior Walls
- 12-2 Wiring in Wet Areas
- 14-2 Wiring in Dry Areas
- High Efficiency Gas Furnace
- Digital Thermostat



Due to continuous product development and improvement, prices, specifications, and materials are subject to change without notice or obligation.



3200 Enterprise Ave  
York, NE 68467

[redmanhomesyork.com](http://redmanhomesyork.com)