



WELL BUBBLER AIR LINE KIT INSTALLATION INSTRUCTIONS

TUBING The Air Line Kit uses a 1000 foot roll of 5/32" OD tubing, rated for 350psi at -60 to 200F. This tubing is installed into the well using the Weight Bead Kit. A Tubing Caddy is recommended for measuring the exact length of tube.



WEIGHT BEAD KIT

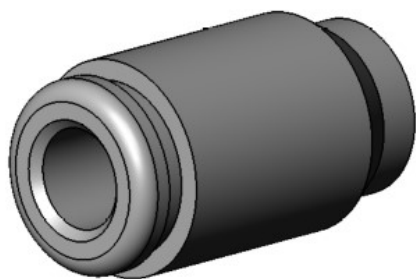
STEP 1 The Weight Bead Kit includes a quantity of 40-50, 1/2" long, 0.166" ID, 3/8" OD, Zinc-plated brass beads. Install half of these over the end of the tubing, as shown in the image below.





WELL BUBBLER AIR LINE KIT INSTALLATION INSTRUCTIONS

STEP 2 Install the push-to-connect fitting over the tubing, orienting the push ring to face the beads, as shown below.



STEP 3 Install the remaining beads over the tubing, as shown below





WELL BUBBLER AIR LINE KIT INSTALLATION INSTRUCTIONS

STEP 4 Install the tube fitting on the end of the tube



STEP 5 Install the cap over the end of the tube fitting





WELL BUBBLER AIR LINE KIT INSTALLATION INSTRUCTIONS

STEP 6 Apply a food-grade lubricant to the beads and tubing; install the tubing into the well, while measuring the total installed length. The Tubing Caddy includes a tube length counter and is recommend for frequent installations.

STEP 7 Secure the tubing at the well head using a cord grip, as shown in the image below. Typically, a 1/2" FNPT, 3/4" FNPT, or 1" FNPT port is available for cord grip installation – the Tubing Kit includes an assortment of cord grips and adapters. The cord grip must hold the air line securely, without crushing or pinching it.





WELL BUBBLER AIR LINE KIT INSTALLATION INSTRUCTIONS

STEP 8 The Well Bubbler is designed for 1/4" OD air line. When installing the 5/32" OD tubing included with the Tubing Kit, use the push-to-connect adapter, and a short length of 1/4" OD tubing, to complete the tubing installation – both are included with the Tubing Kit.



STEP 9 Install the 1/4" OD airline into the push-to-connect fitting on the left side of the Well Bubbler. This completes the Tubing Kit installation. Press firmly on the green push ring, and pull back on the tubing, to remove it if necessary.

