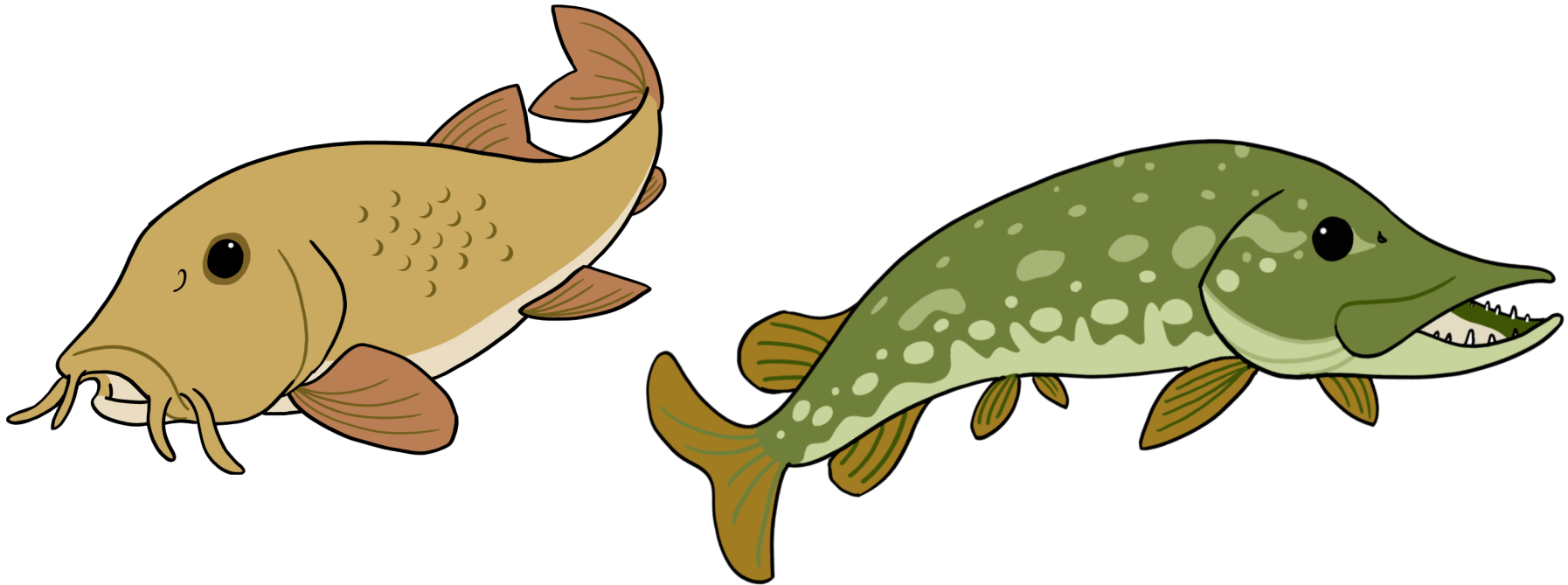


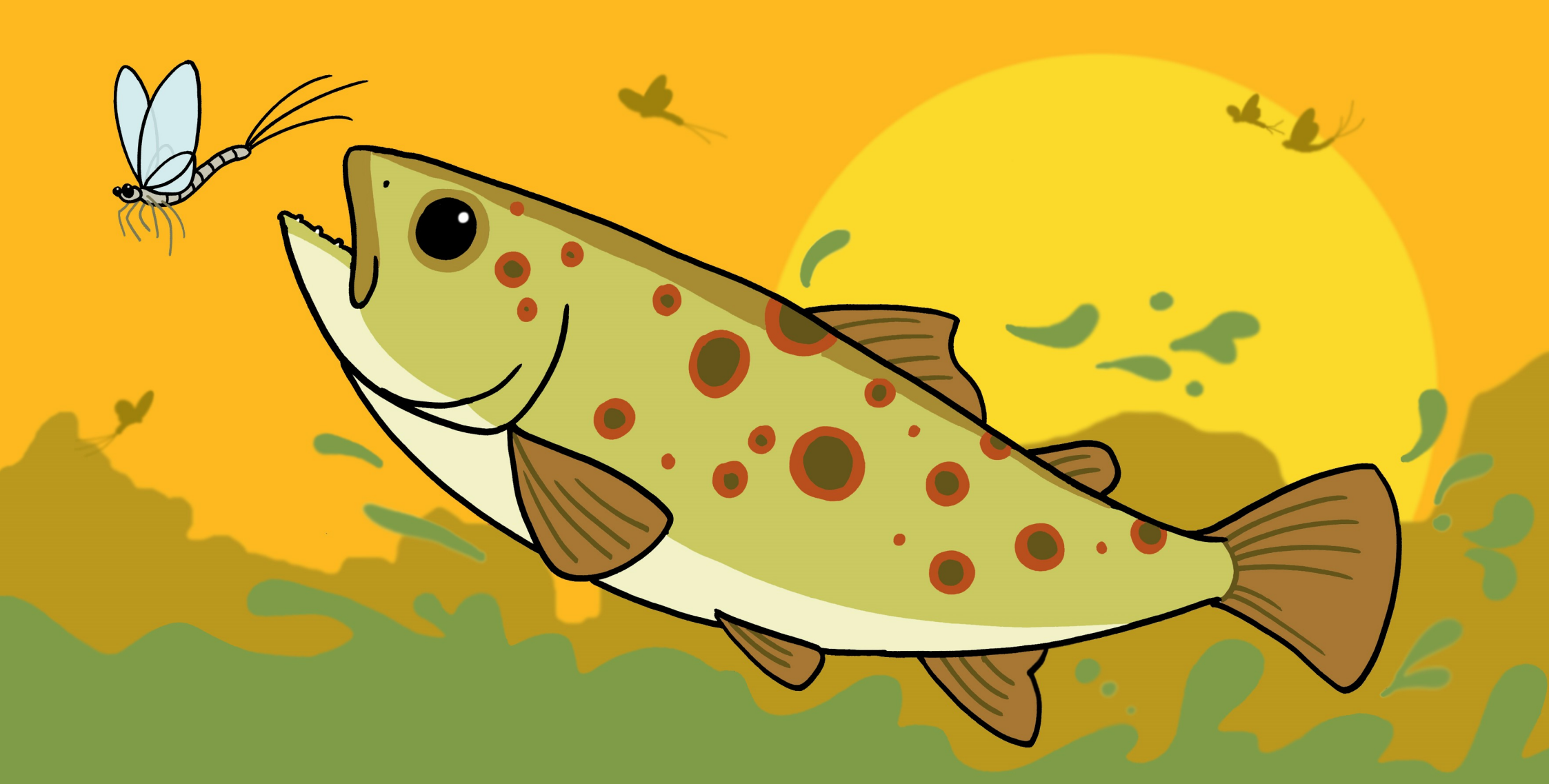
# Young Explorers



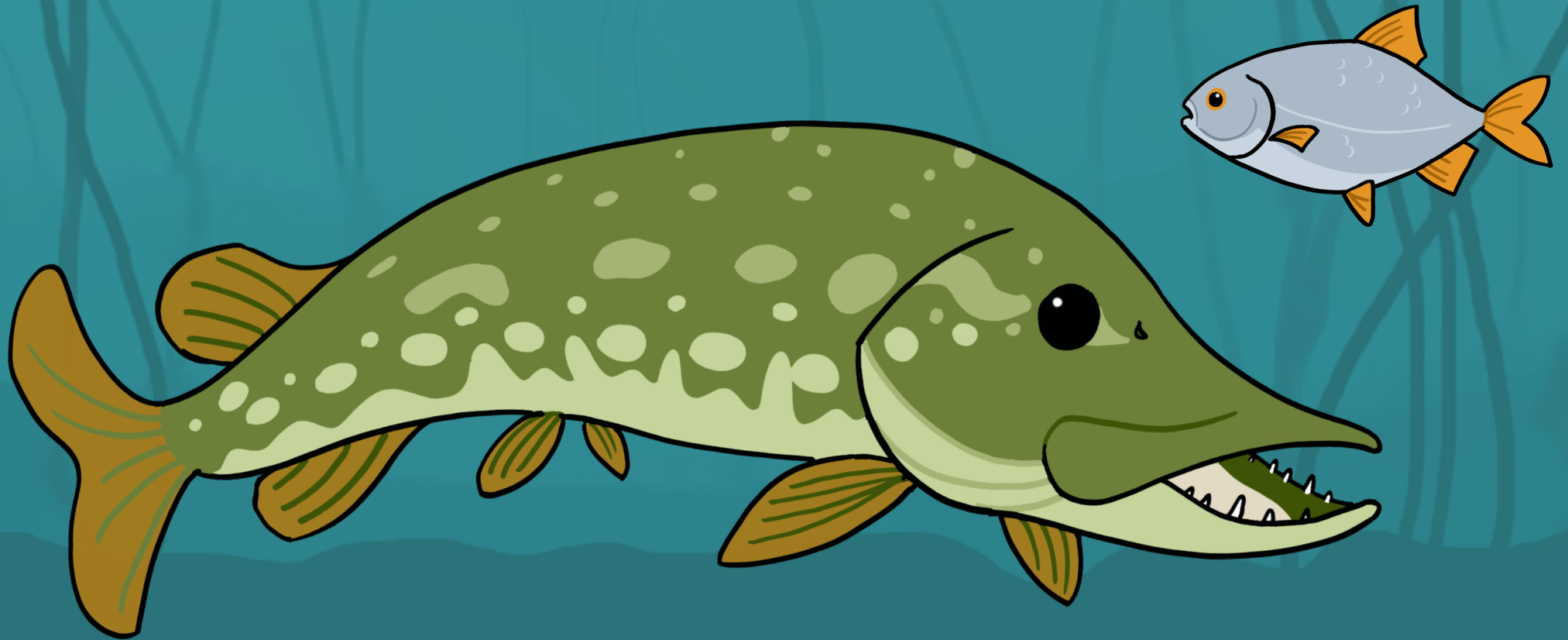
# Rivers & Streams



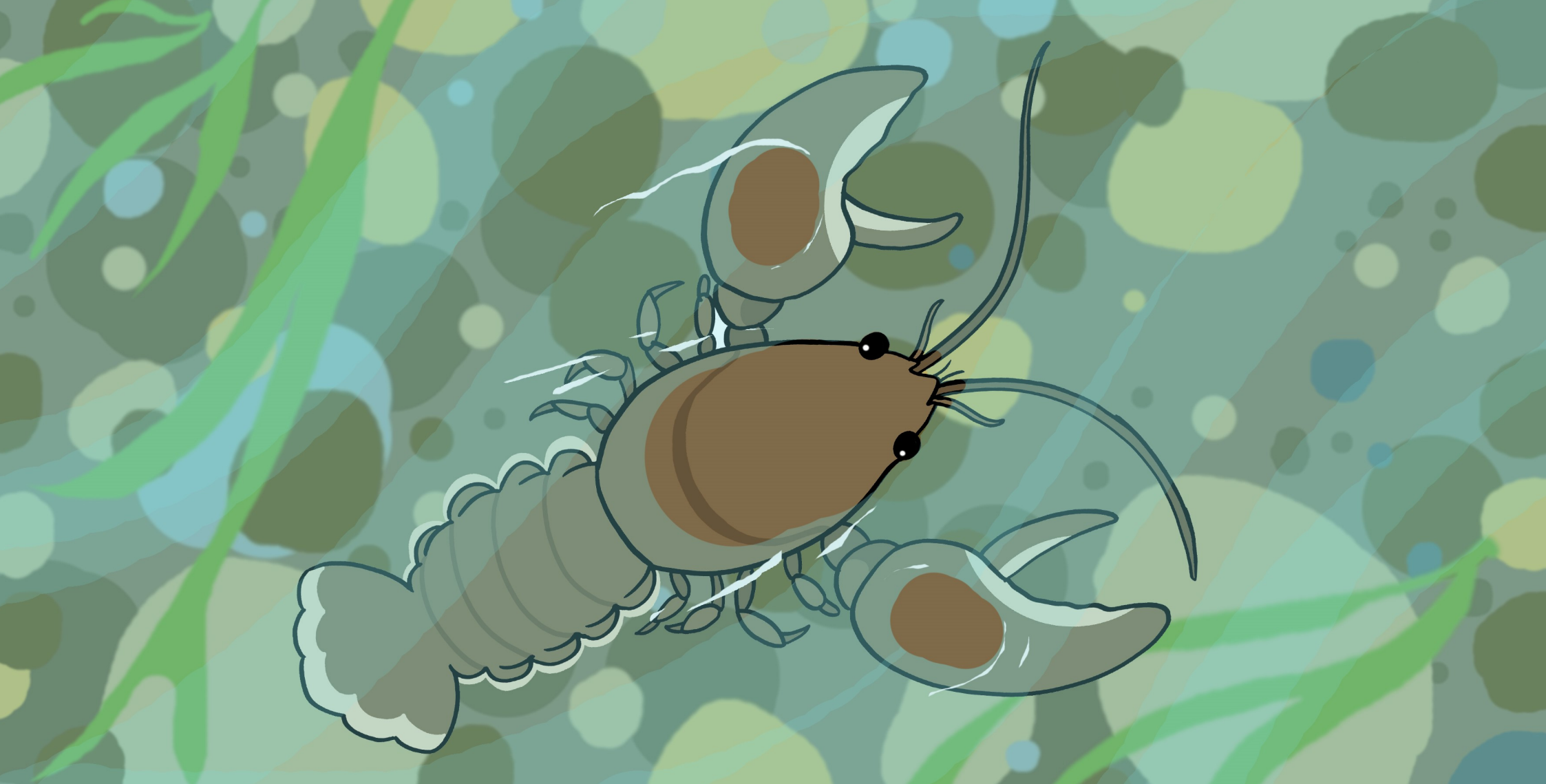
Rivers and streams are very important habitats for wildlife. Beavers make dams from logs, which actually filter-out dirt from the water and creates homes for many other species.



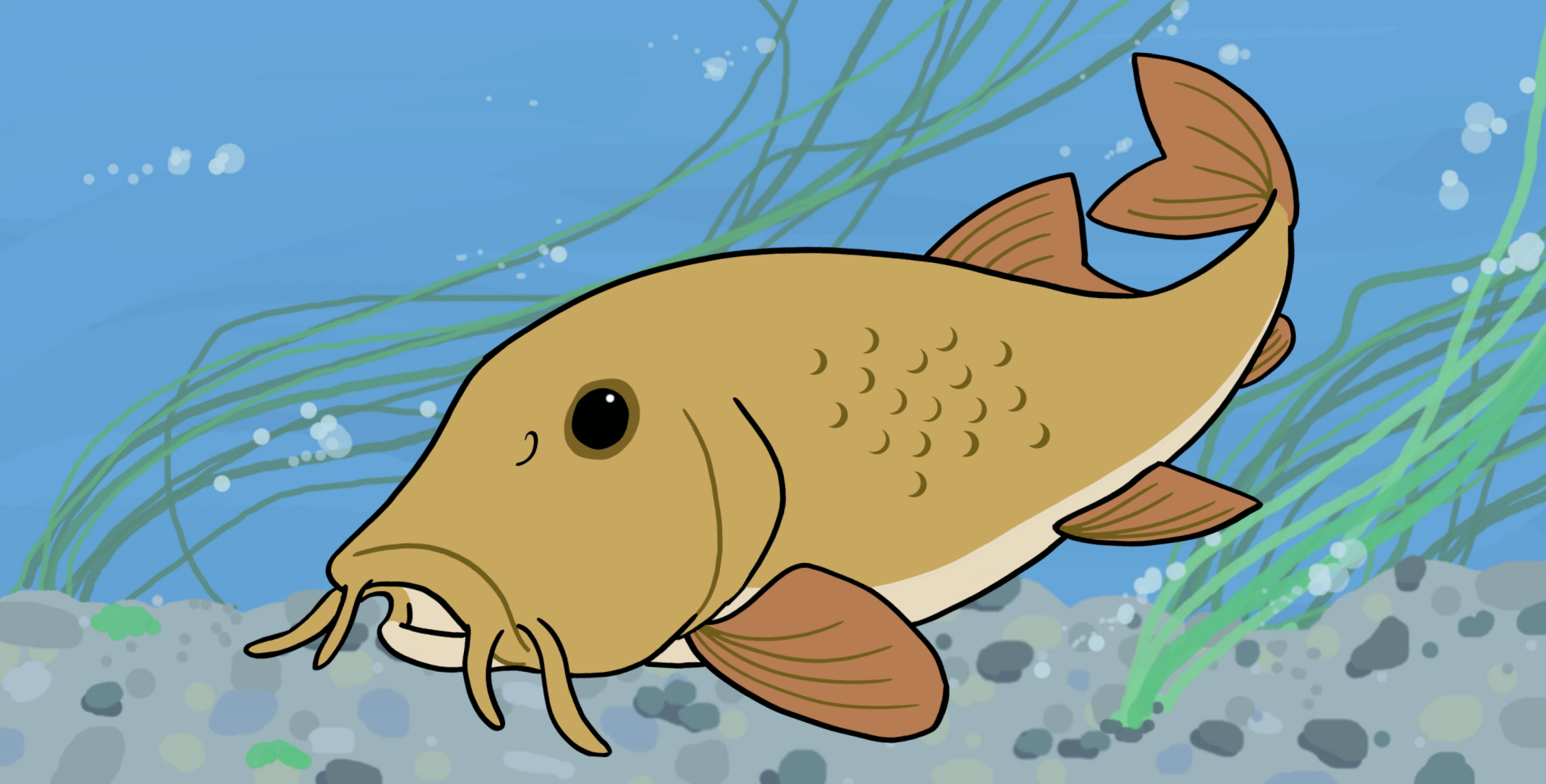
Many creatures, like this brown trout, need clean water in which to lay their eggs. Trout will leap to catch mayflies that have just emerged from the water to fly off as adults.



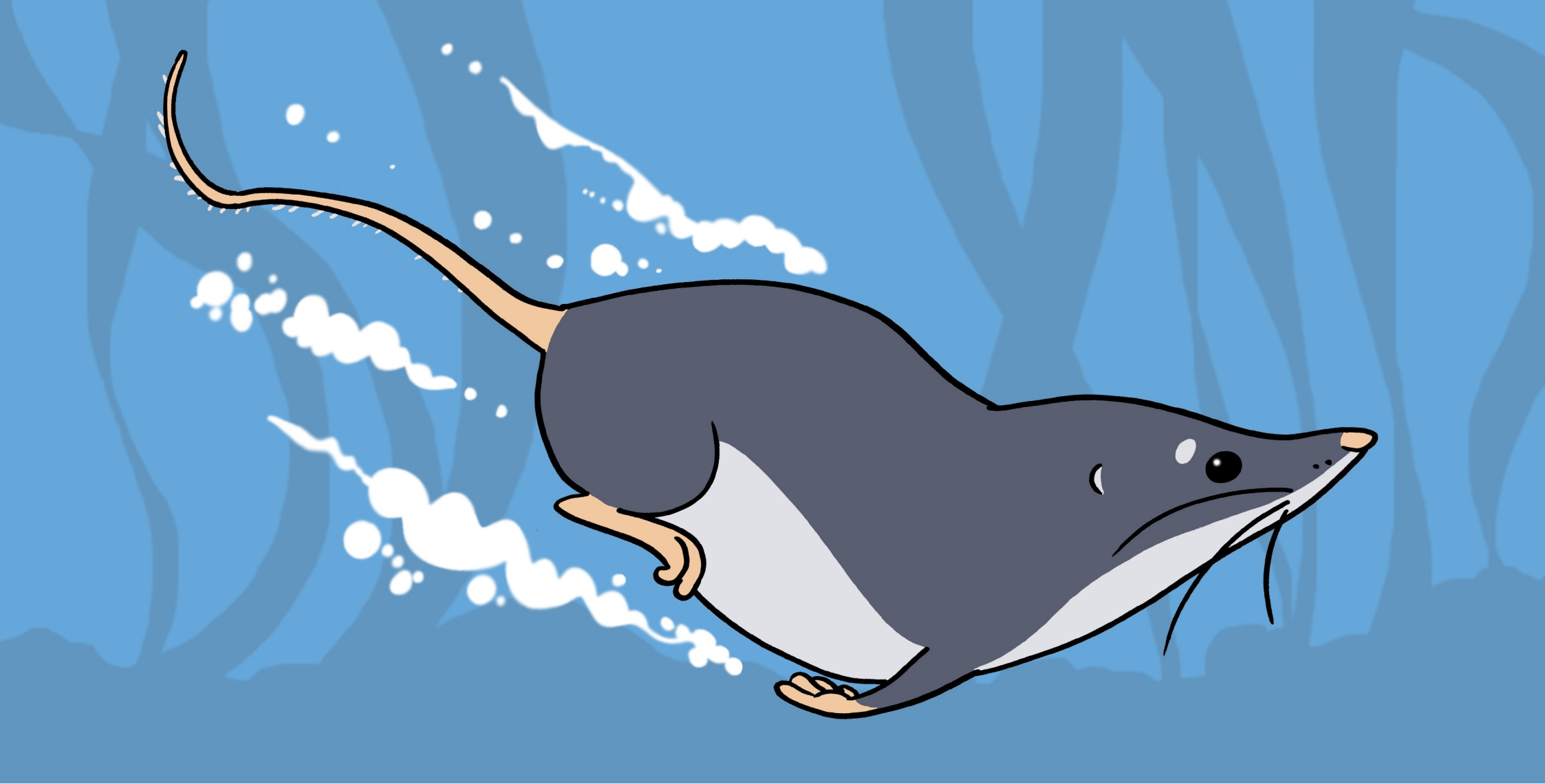
Our rivers and streams are home to many species of fish. The pike is a long-bodied ambush predator, which feeds on all kinds of prey, such as this small, orange-finned roach.



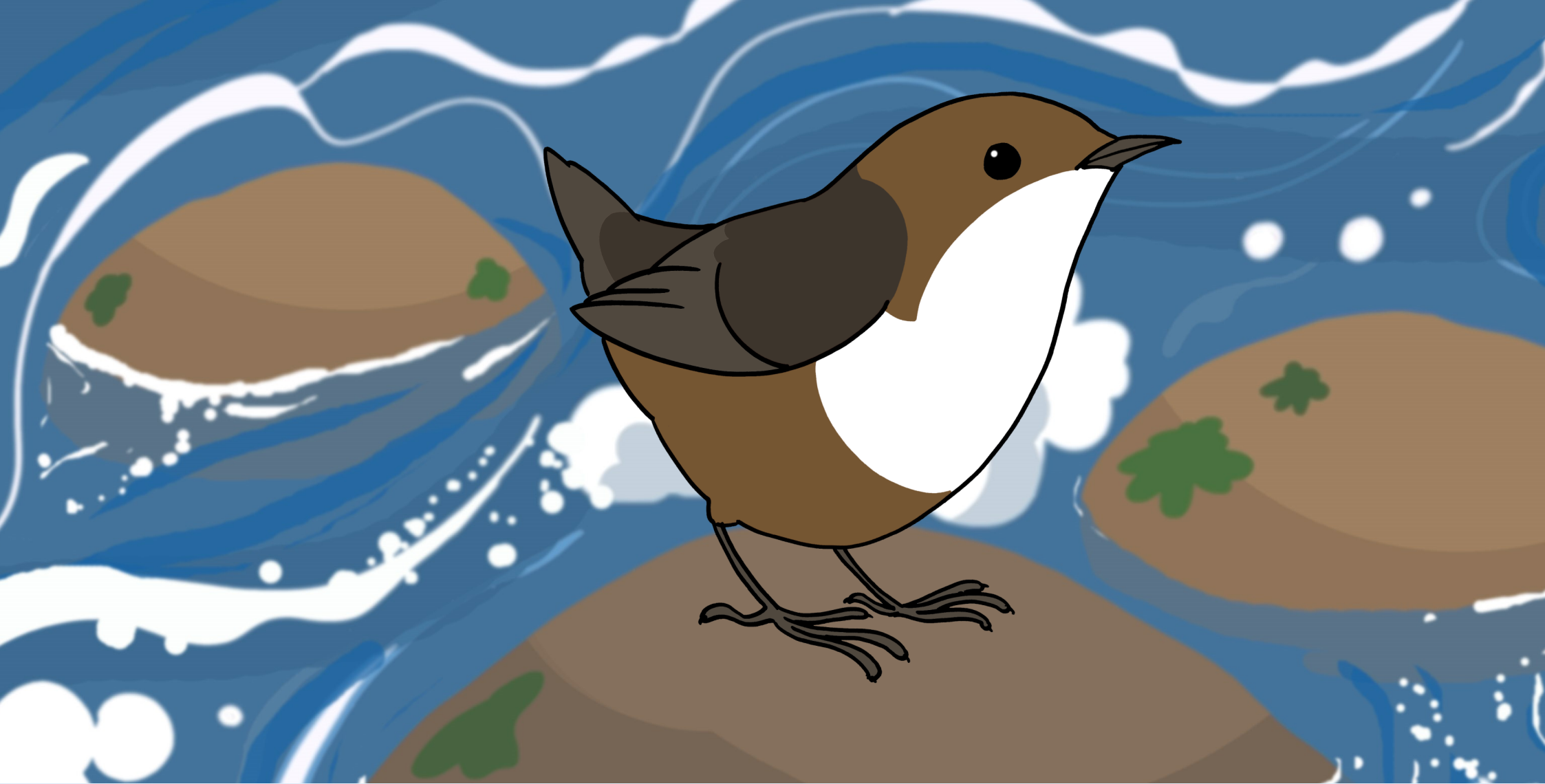
White-clawed crayfish are becoming very rare. They look like small lobsters and have large claws. Crayfish search the riverbed for small prey or the remains of other living things.



Barbel have moustache-like sense organs (called barbels) near their mouths. These detect anything that may become a tasty meal, hidden between the gravel or muddy riverbed.

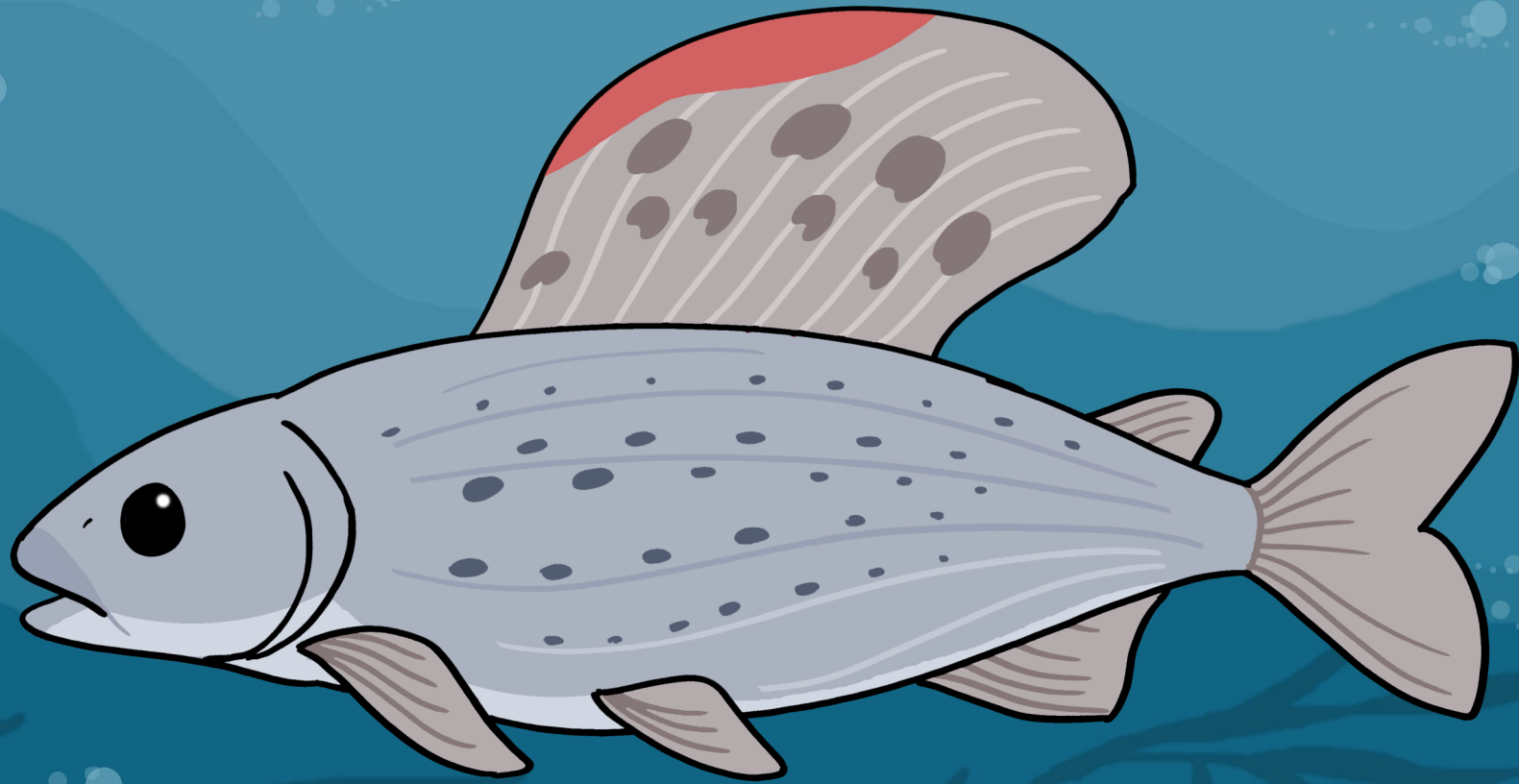


The water shrew is a tiny mammal that hunts mostly at night. They make sense of their surroundings in the fast flowing water using long, sensitive whiskers.



Dippers plunge beneath the surface of the water to forage for tiny prey, hidden on the riverbed. You may see them sitting on rocks, bobbing up-and-down between dives.

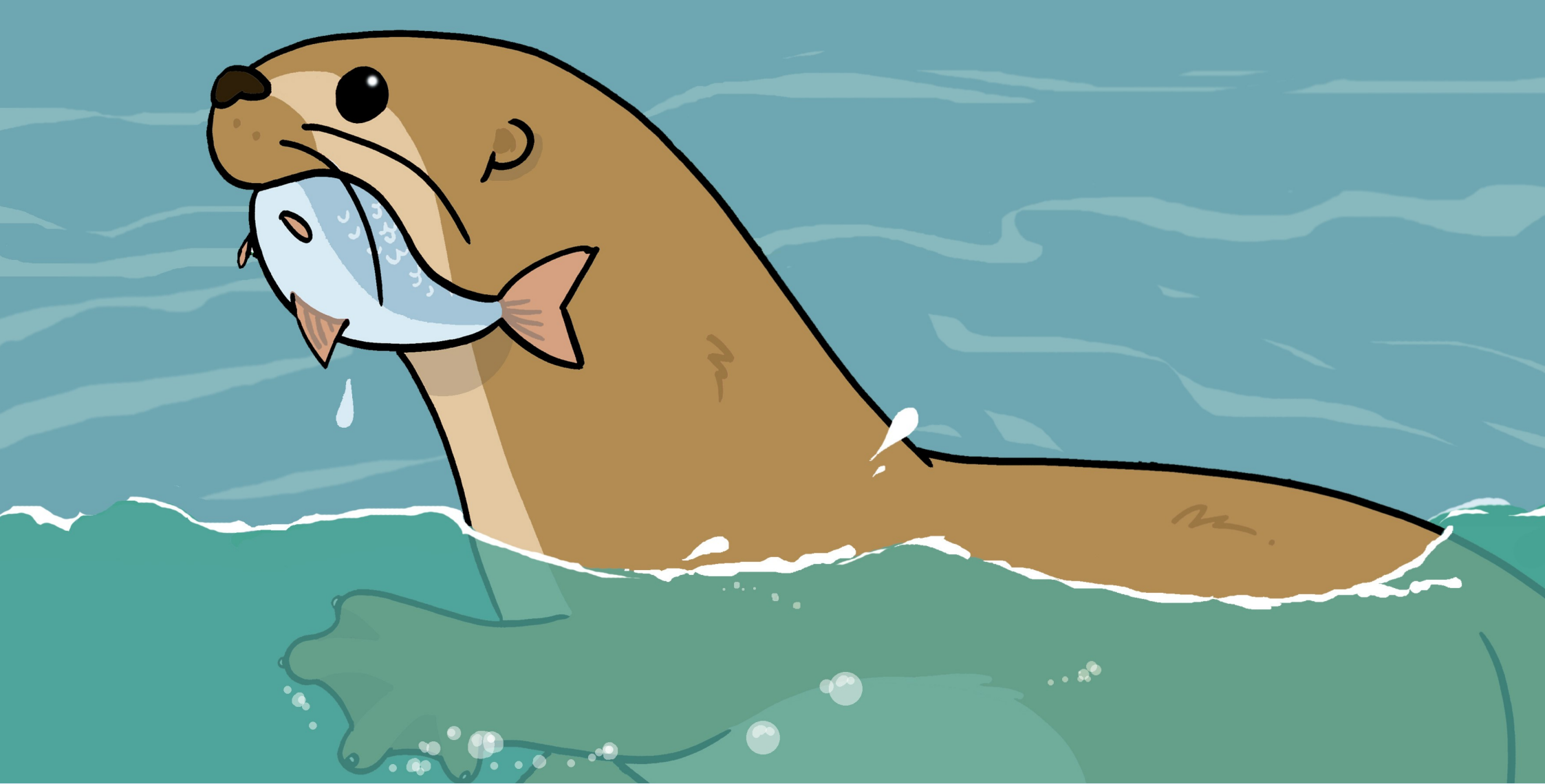




The grayling has a spectacular dorsal fin, although this is larger in the male fish. Their elegant appearance led to the nickname, the “Lady of the Stream”.



Loss of clean, undisturbed riverside habitat has led to the population of water voles rapidly declining to the point they are now classed as an endangered species.



Did you enjoy meeting the wildlife of rivers and streams?

***What can you remember?***

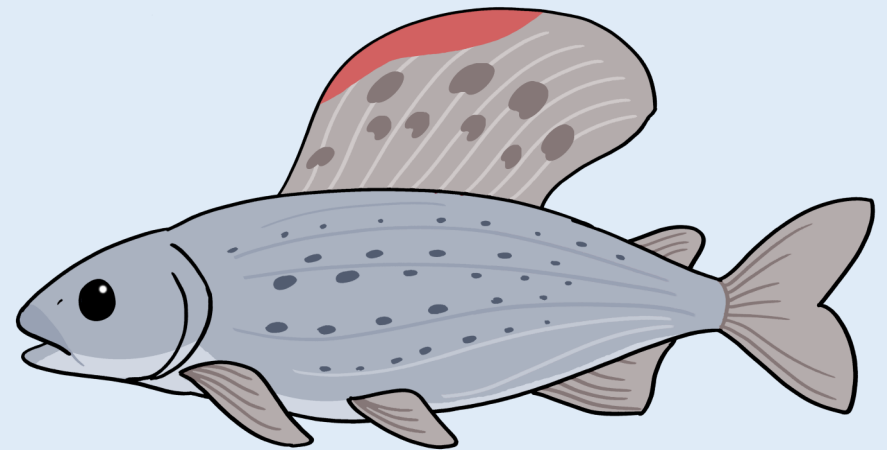
# Questions

**How does the water shrew sense things underwater?**

**Can you describe what a crayfish looks like?**

**What creature did the brown trout try to catch?**

**Why do you think the beaver was carrying a log?**



Young Explorers

# Rivers & Streams

series 1, book 11



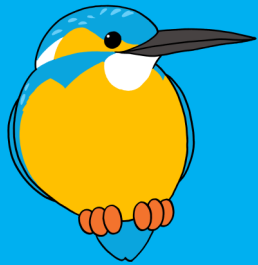
Written and illustrated by Colin Marshall, copyright 2023

[www.livingworldeducation.com](http://www.livingworldeducation.com)

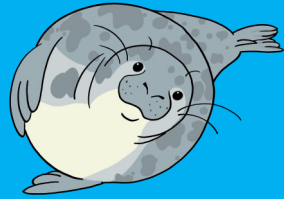
[info@livingworldeducation.com](mailto:info@livingworldeducation.com)

[@LivingWorldEdu](https://www.instagram.com/LivingWorldEdu)

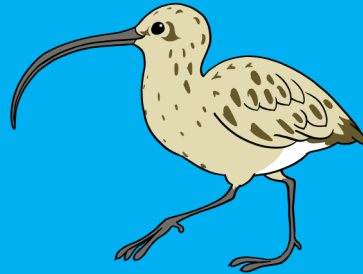
# Young Explorers



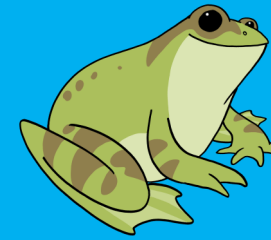
1. KINGFISHER



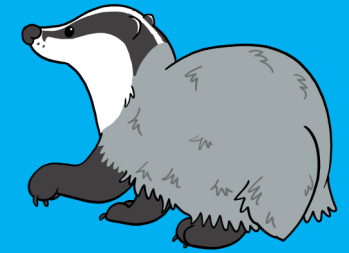
2. GREY SEAL



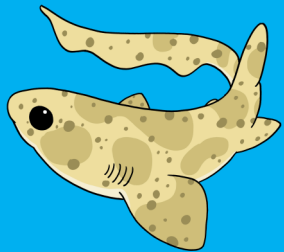
3. BIRD BEAKS



4. FROG



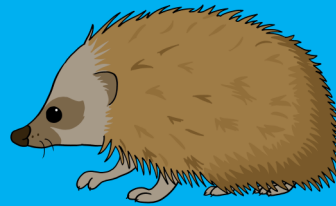
5. BADGER



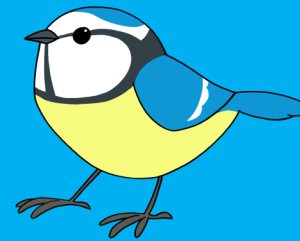
6. OUR SHARKS



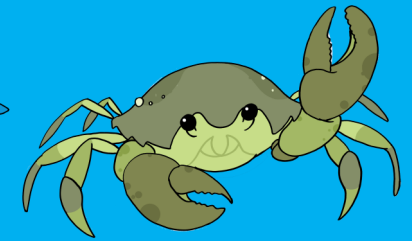
7. MOTHS & BUTTERFLIES



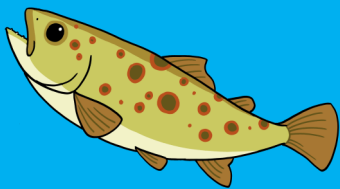
8. MY MAMMALS



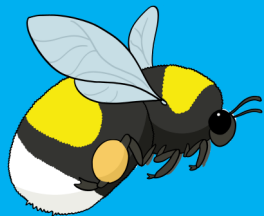
9. GARDEN BIRDS



10. COASTS



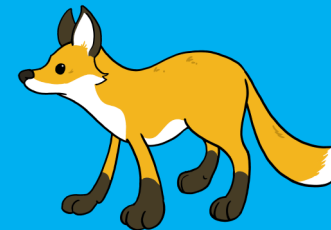
11. RIVERS & STREAMS



12. MINIBEASTS



13. BIRDS OF PREY



14. FOX



15. REPTILES & AMPHIBIANS