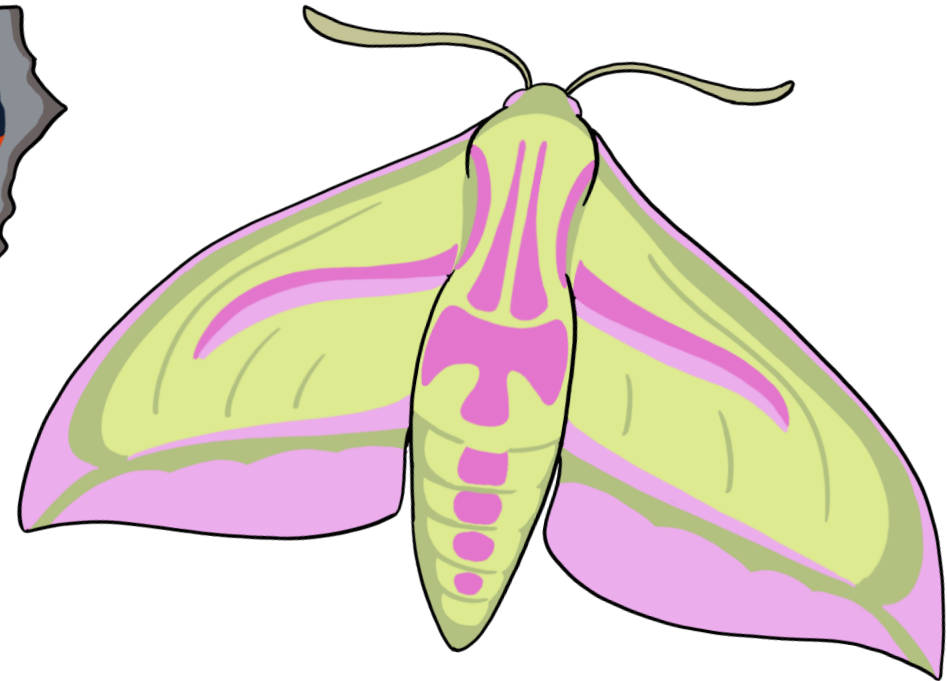
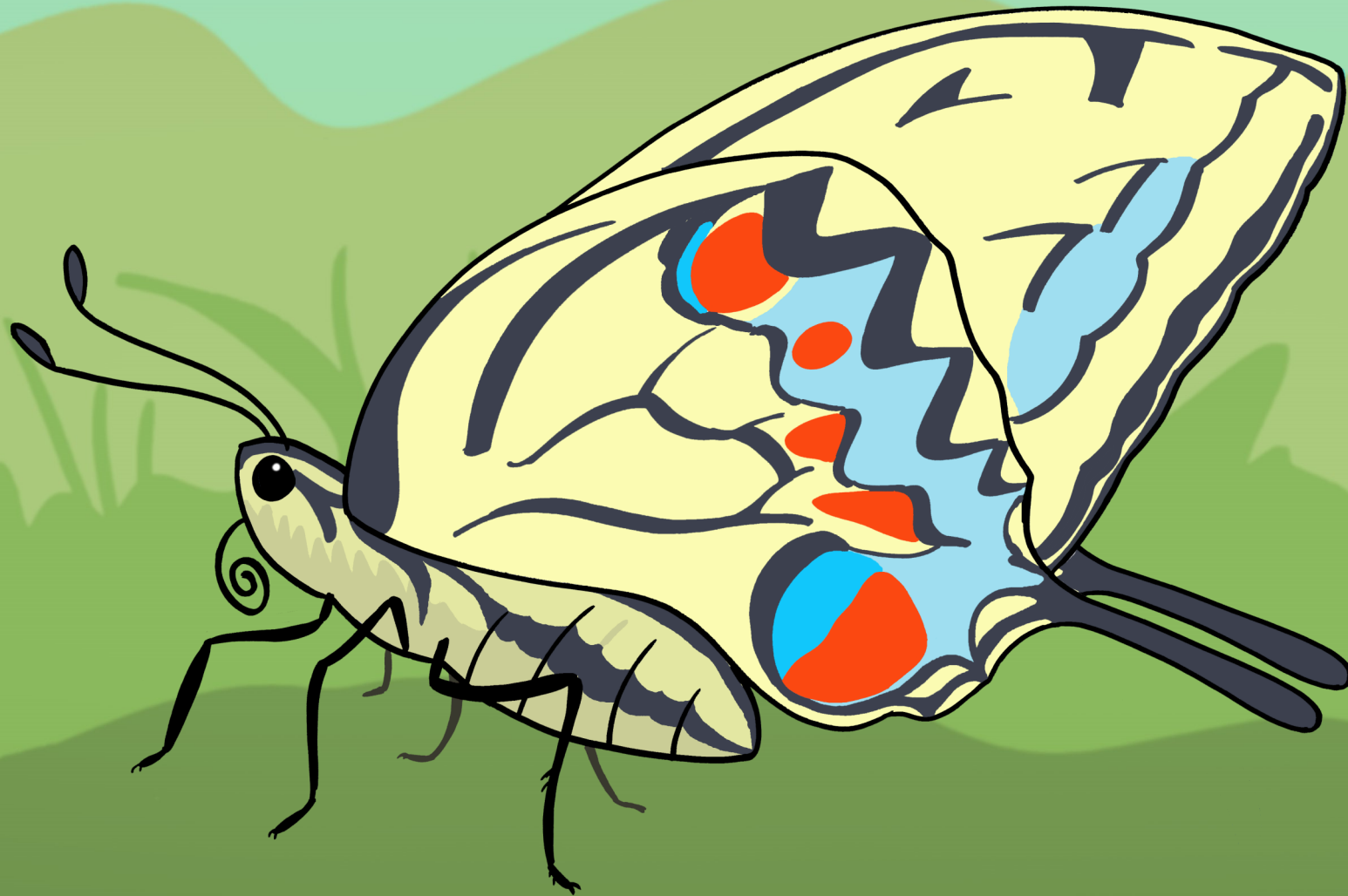


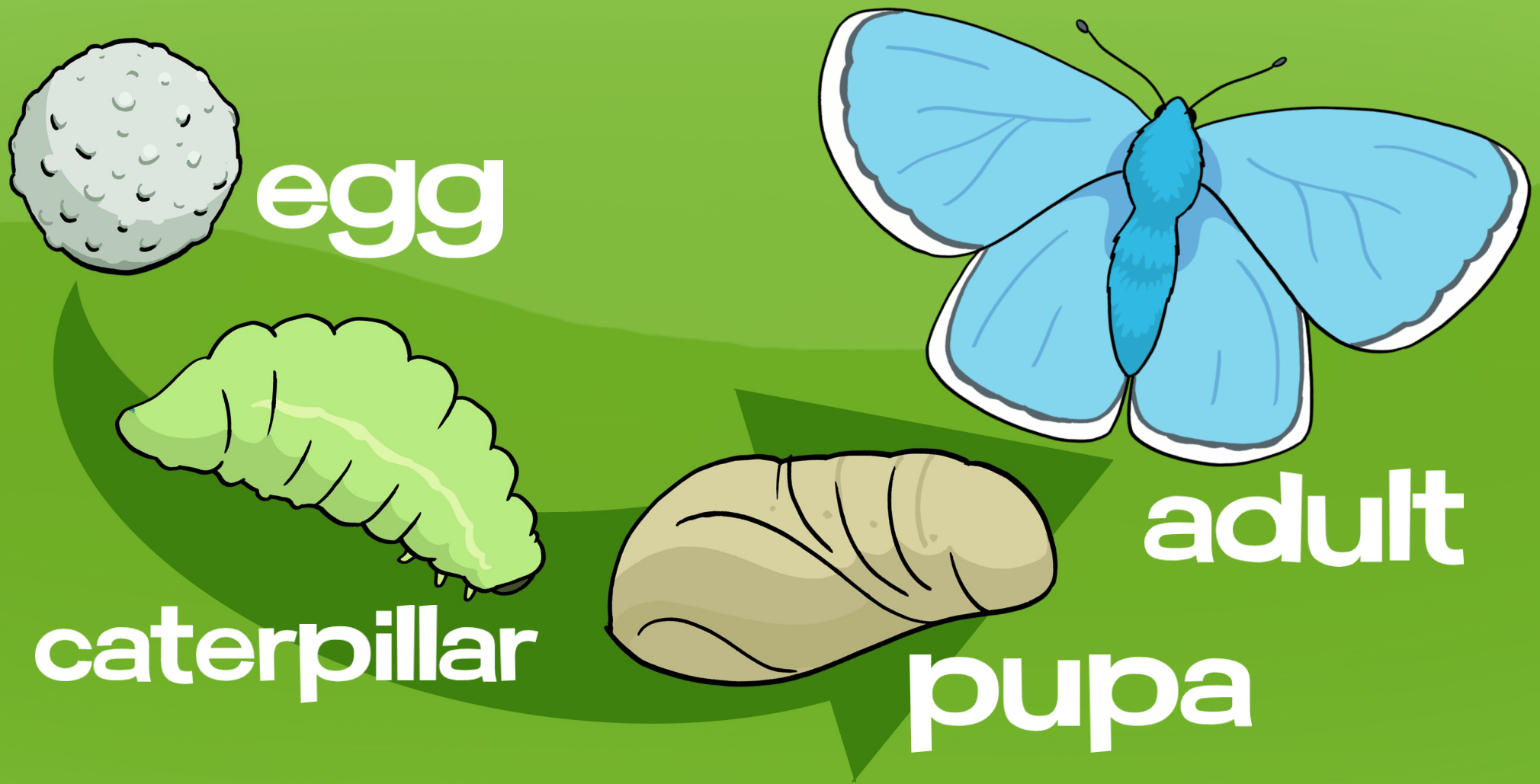
Young Explorers



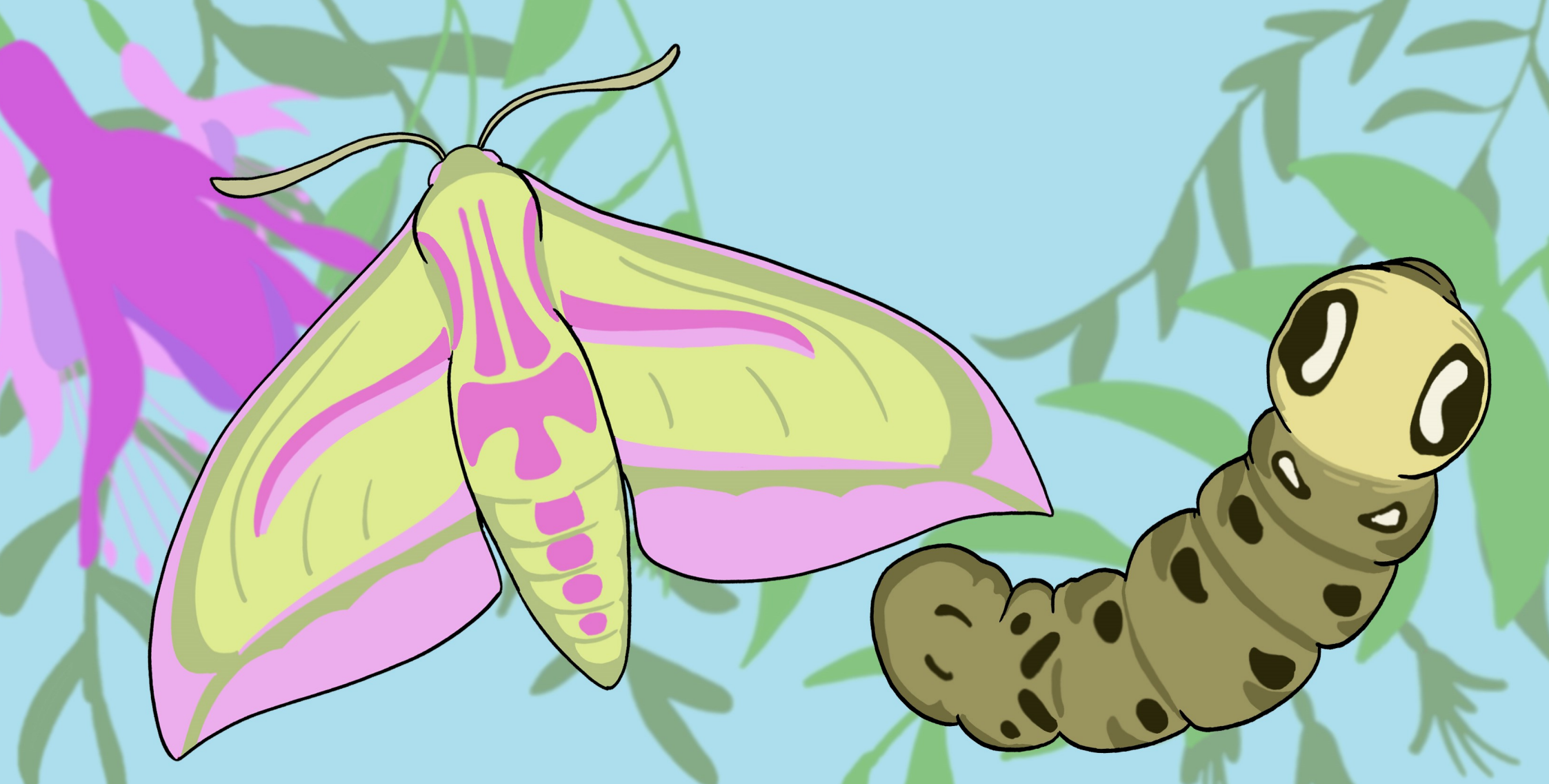
Butterflies & Moths



Both moths and butterflies are types of insect with six legs. As adults, they have pairs of large wings for flying.



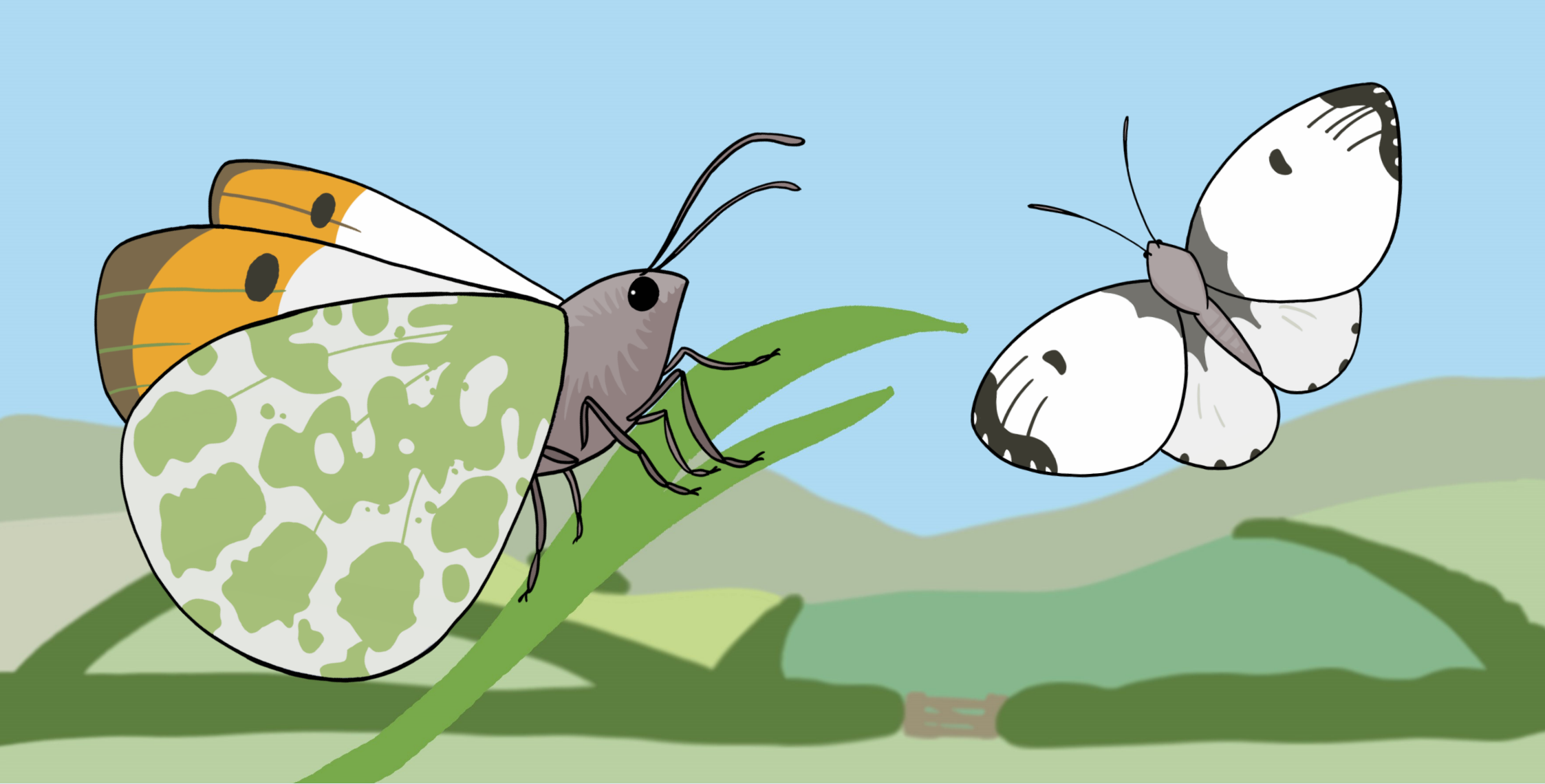
Butterflies and moths start as a caterpillar that hatches from an egg. It form a chrysalis/pupa around its body, which then undergoes incredible changes, before emerging as an adult.



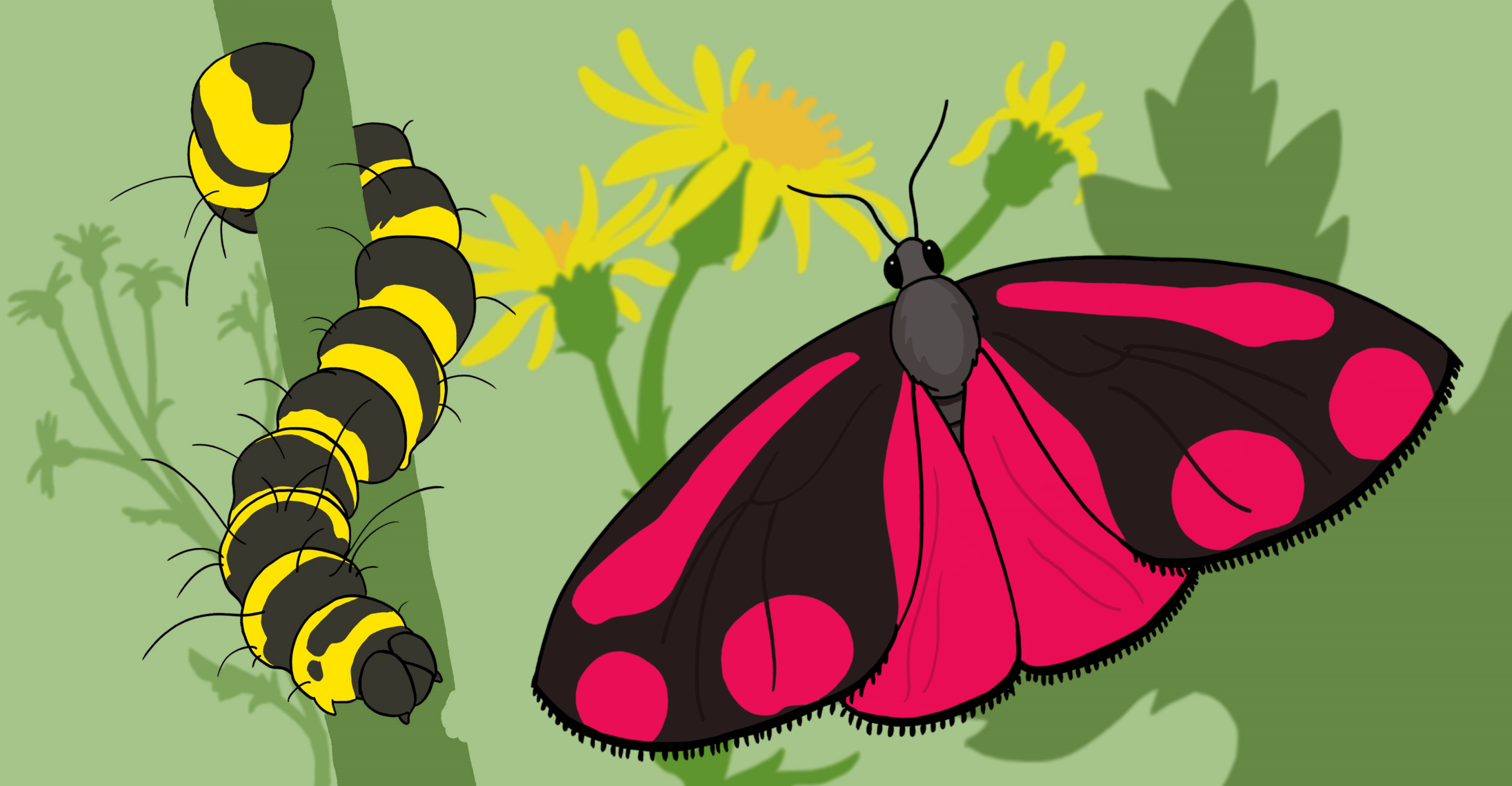
The elephant hawk moth caterpillar resembles the long, wrinkly trunk of an elephant feeds on plants such as fuchsia. The adults enjoys nectar produced by the flowers.



Leaving space for plants like nettles in gardens is important for peacock butterflies, whose caterpillars will hatch on, then eat these stinging leaves.



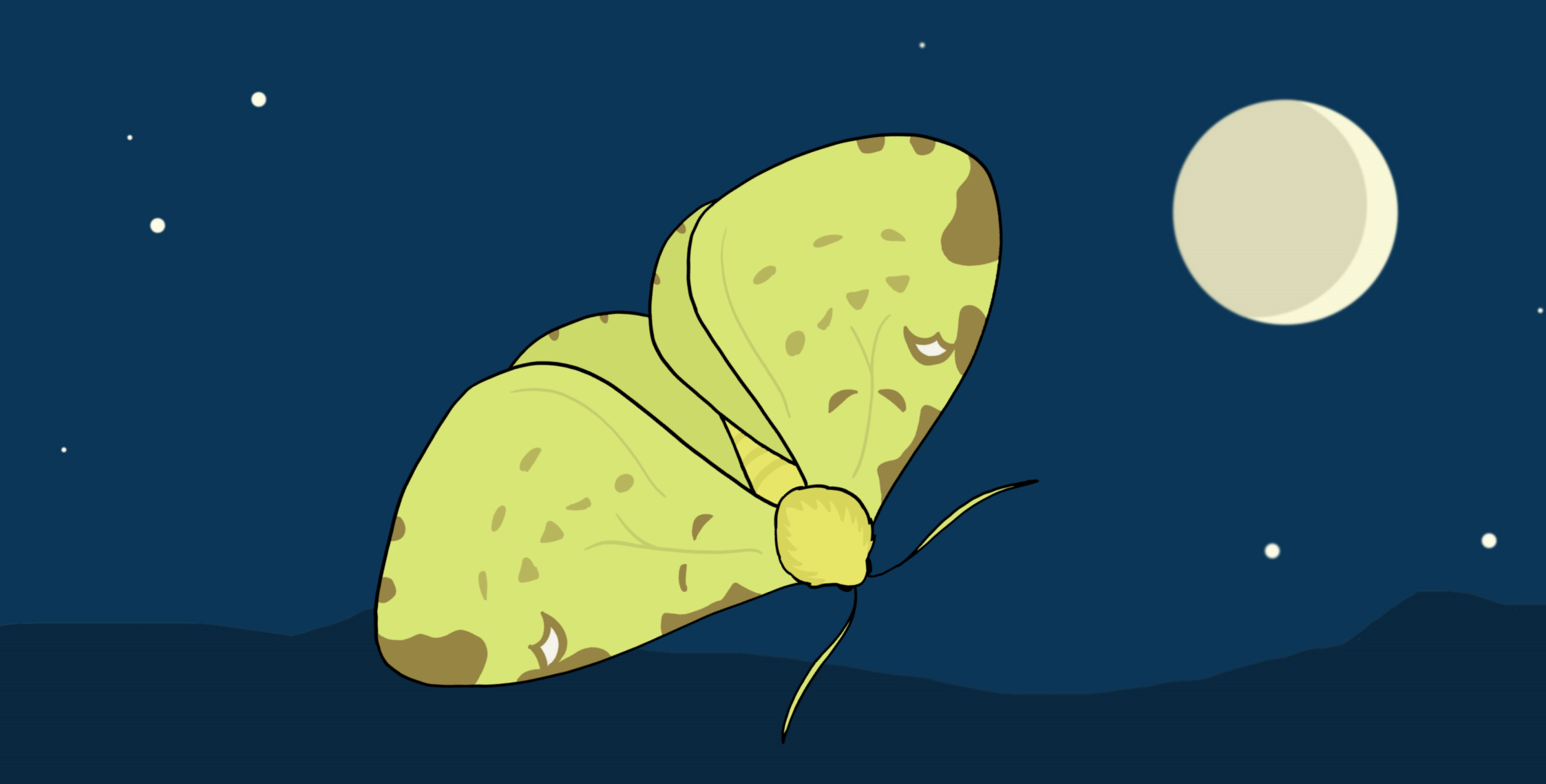
The male orange-tipped butterfly has wing colouration that suits their name. However, the females of the species are mainly white.



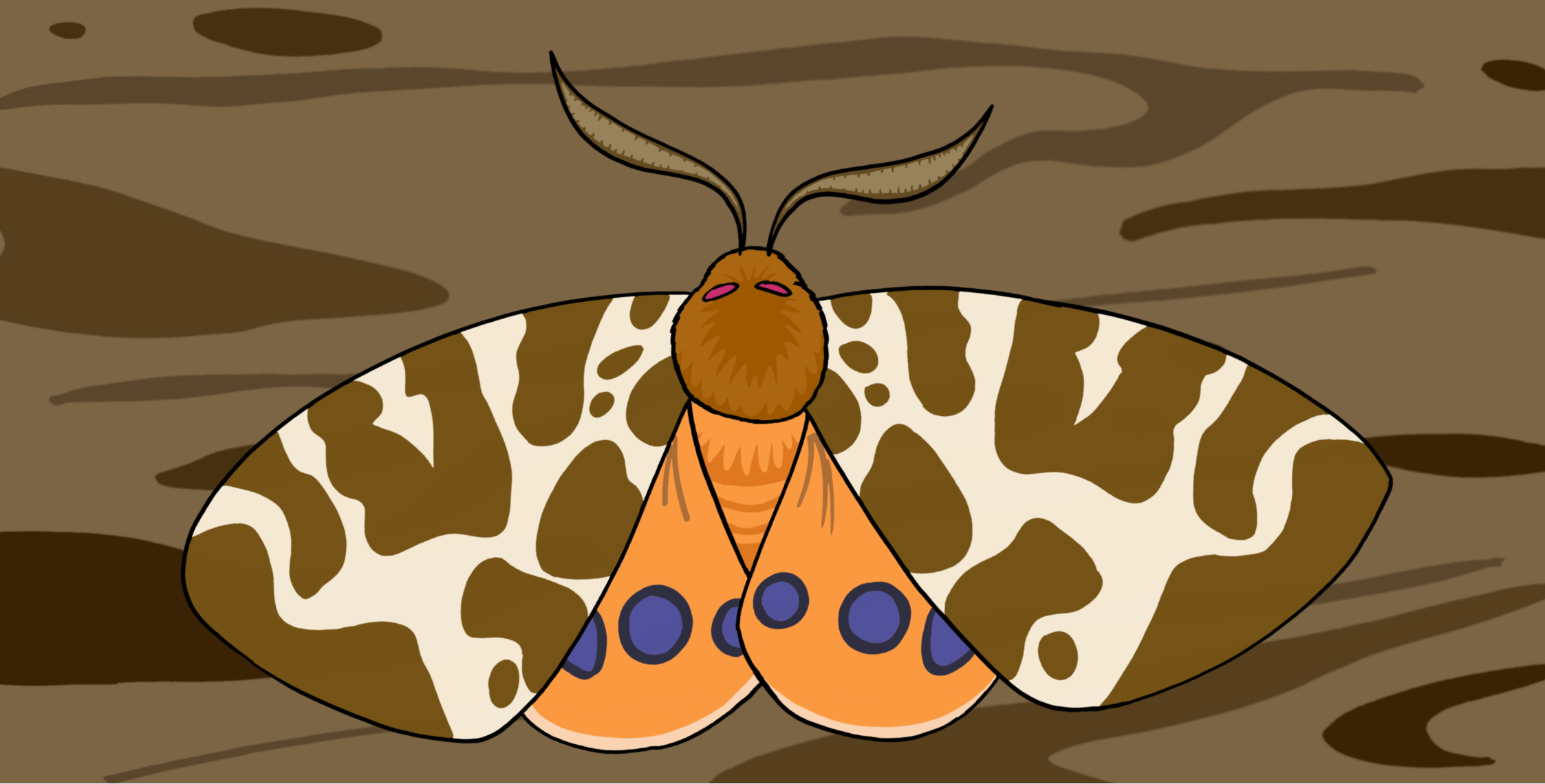
Vivid black and yellow stripes warn predators that the caterpillar of the cinnabar moth is poisonous if eaten. Ragwort plants are their preferred food.



Extending their long, curled tongue, the hummingbird hawk moth skillfully flies back and forth feeding on nectar-rich flowers such as honeysuckle and lavender.



Many nocturnal moths, like this brimstone moth, are attracted to safe traps with bright lights. This allows us to identify species, count them and then carefully release the moths.



Basking in the sun warms the flight muscles of butterflies and moths, giving us a chance to observe their stunning wing patterns e.g. this garden tiger moth.



Did you enjoy learning about these incredible insects?

What can you remember?

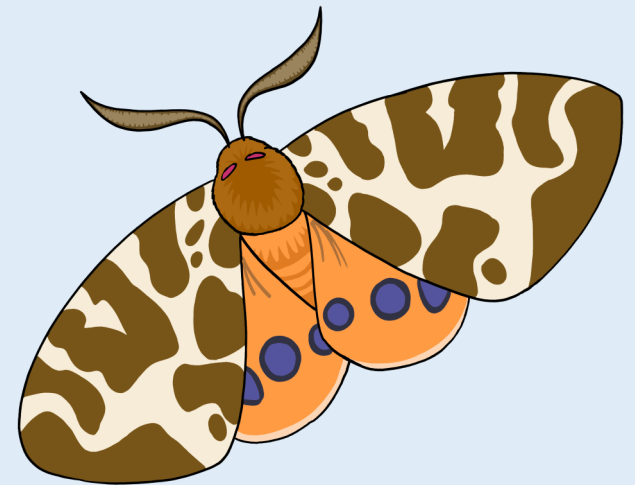
Questions

Moths and butterflies have symmetrical patterns. Do you know what *symmetry* is?

Some moths are *nocturnal*. What does that mean?

How do these insects change over their lives?

Name a plant that is helpful to moths or butterflies?



Young Explorers

Butterflies & Moths

series 1, book 7



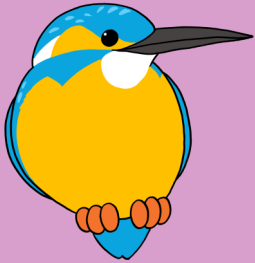
Written and illustrated by Colin Marshall, copyright 2023

www.livingworldeducation.com

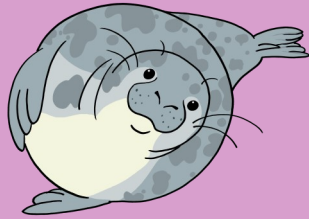
info@livingworldeducation.com

[@LivingWorldEdu](https://www.instagram.com/LivingWorldEdu)

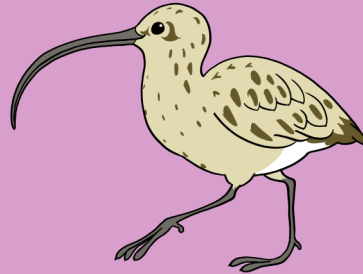
Young Explorers



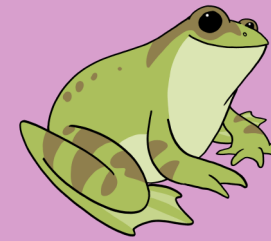
1. KINGFISHER



2. GREY SEAL



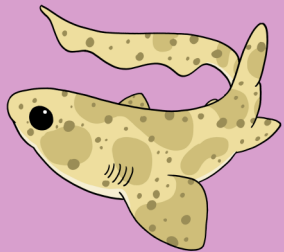
3. BIRD BEAKS



4. FROG



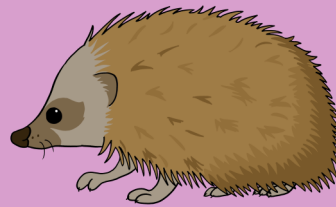
5. BADGER



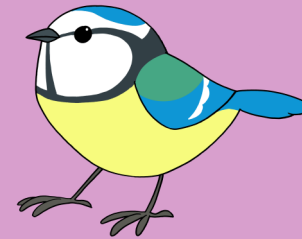
6. OUR SHARKS



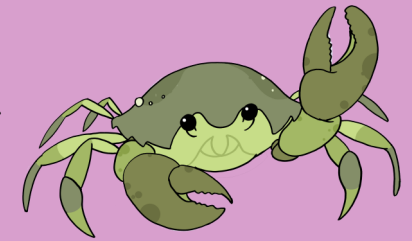
7. MOTHS & BUTTERFLIES



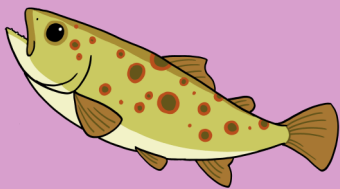
8. MY MAMMALS



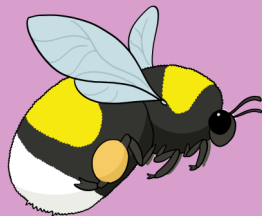
9. GARDEN BIRDS



10. COASTS



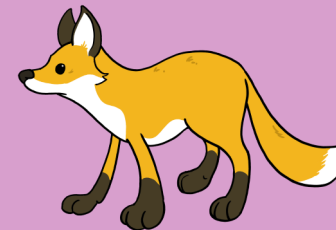
11. RIVERS & STREAMS



12. MINIBEASTS



13. BIRDS OF PREY



14. FOX



15. REPTILES & AMPHIBIANS