

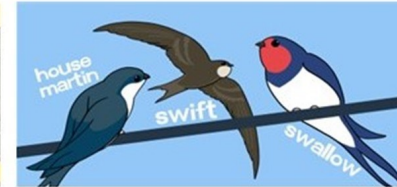


# Which birds visit our gardens?

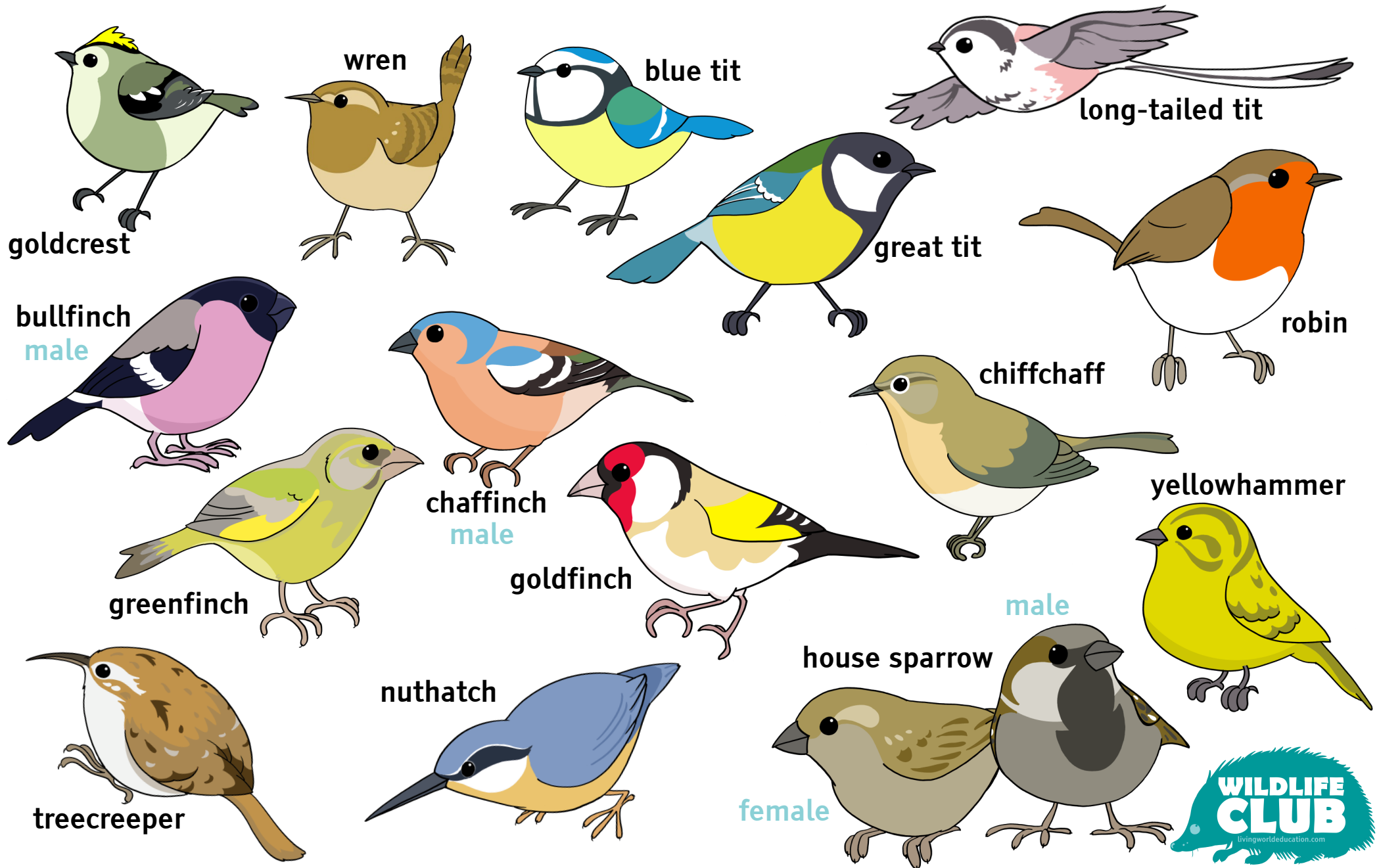
- Use the **identification sheets** to help check which birds visit your garden or green space in an hour.
- Create a **graph** of your data. Add a **date**, so you can see how the species and number of birds change over time.
- Chose how you wish to **decorate the birds** (each has a colour guide) to begin a display of your Wildlife Club work.

## Extend your learning!

- A free downloadable e-book at [www.livingworldeducation.com/explorers](http://www.livingworldeducation.com/explorers) will give more information about these birds with a short quiz!
- [www.livingworldeducation.com/wildlife\\_gardens](http://www.livingworldeducation.com/wildlife_gardens) will give ideas to help you attract more wildlife, including birds.



# GARDEN BIRDS ID CHART 1

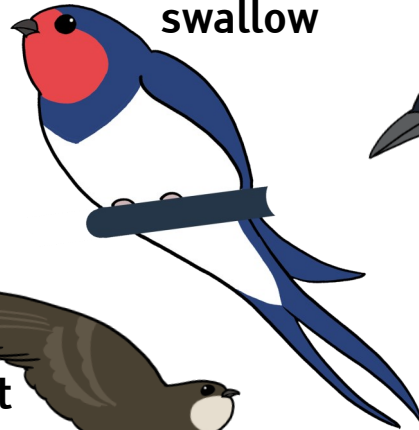


# GARDEN BIRDS ID CHART 2

house  
martin



swallow



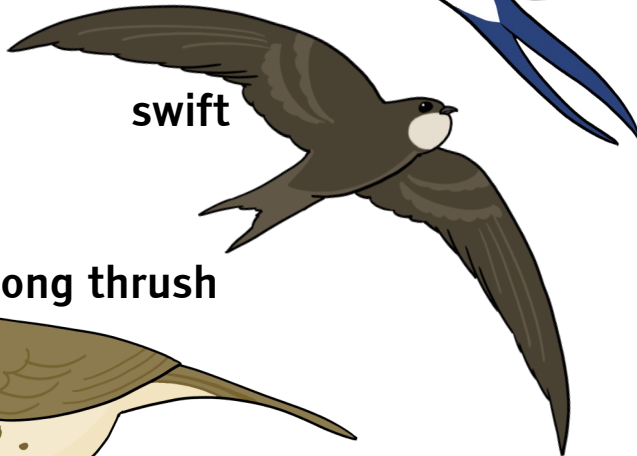
magpie



starling



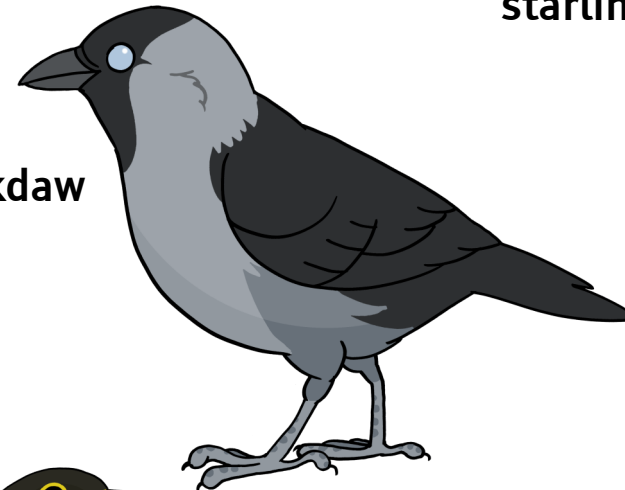
swift



song thrush



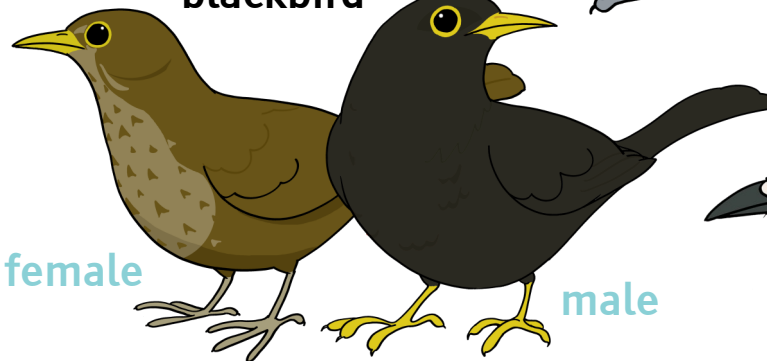
jackdaw



great  
spotted  
woodpecker



blackbird



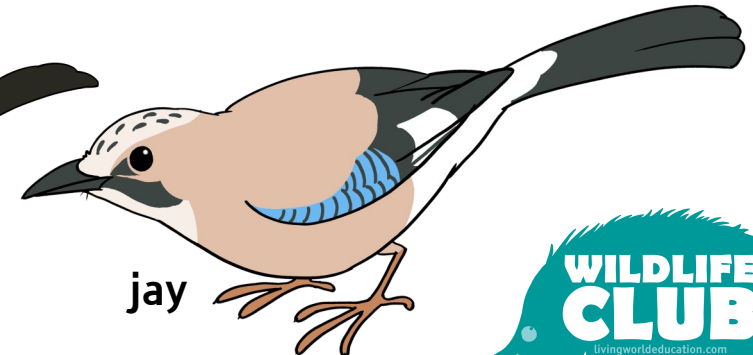
female

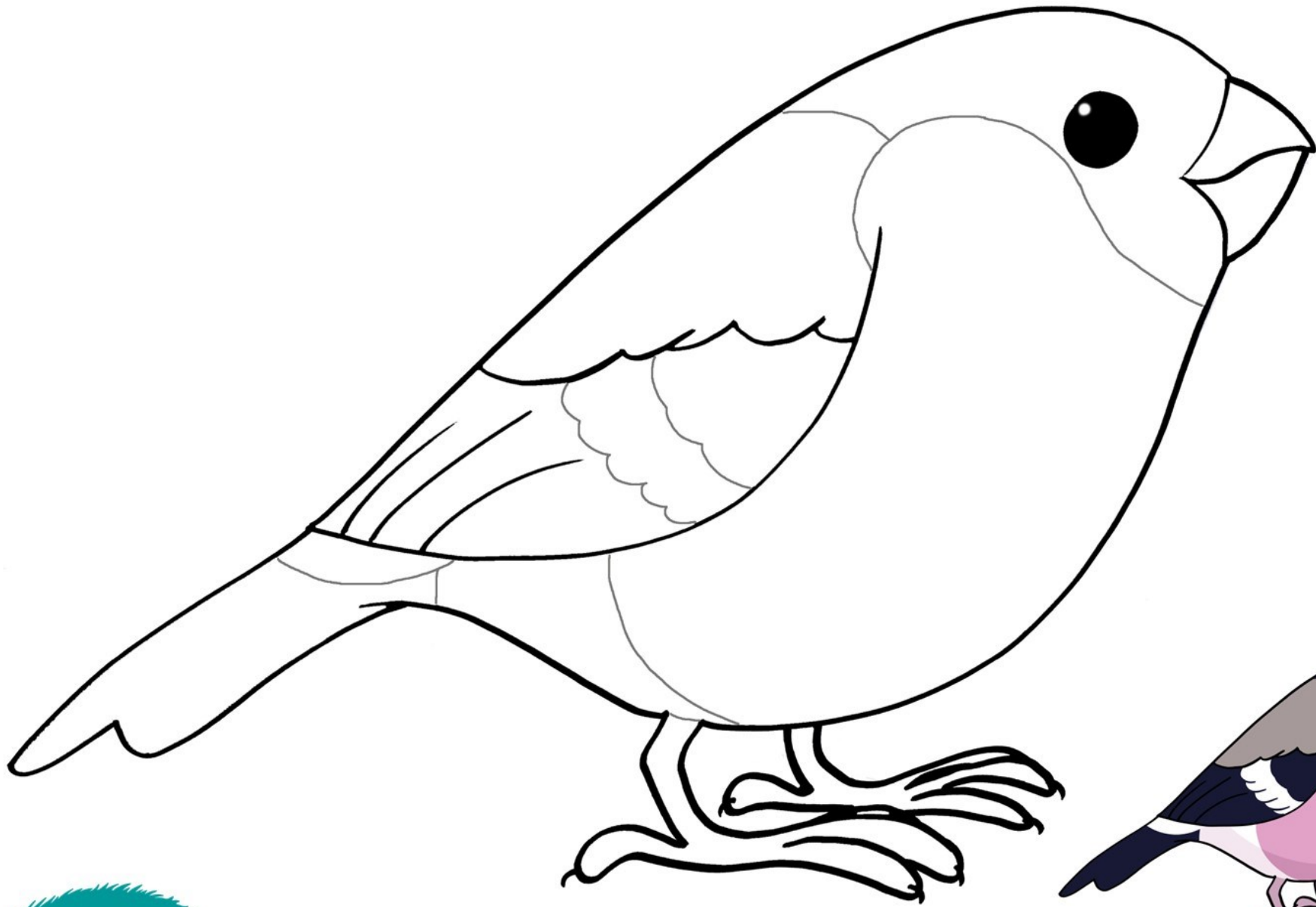
male

wood pigeon



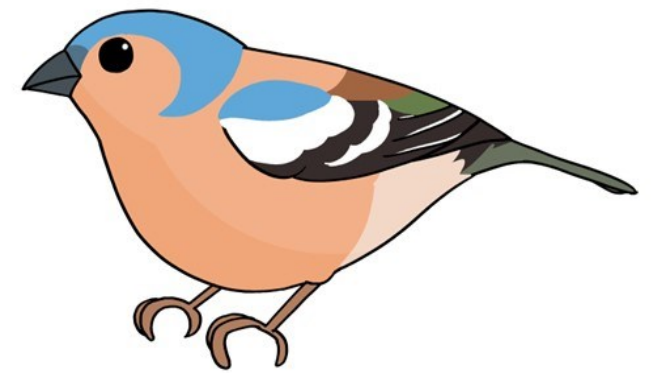
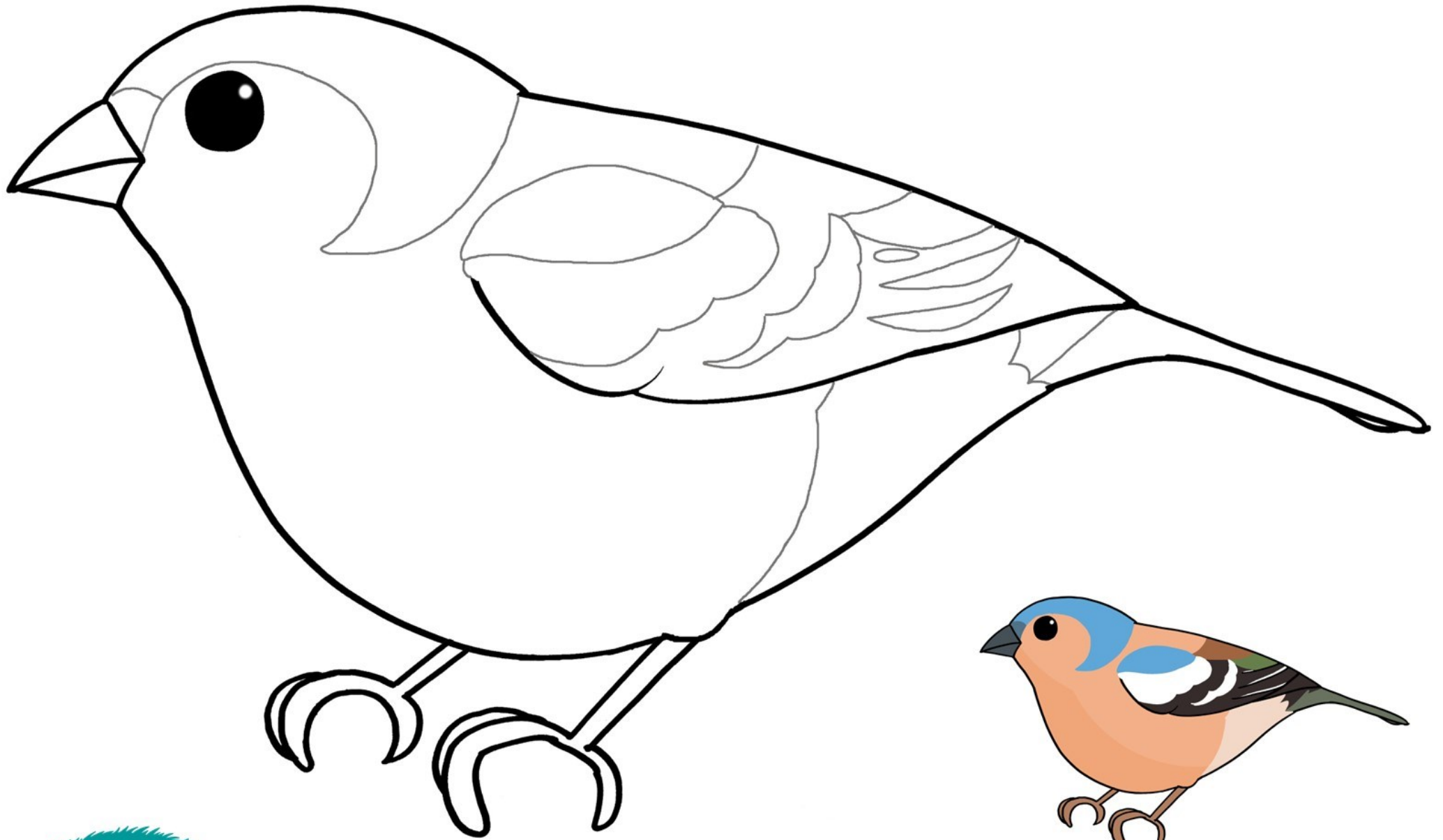
jay



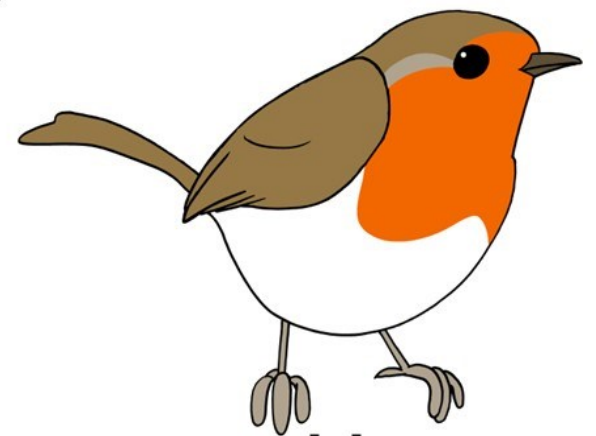
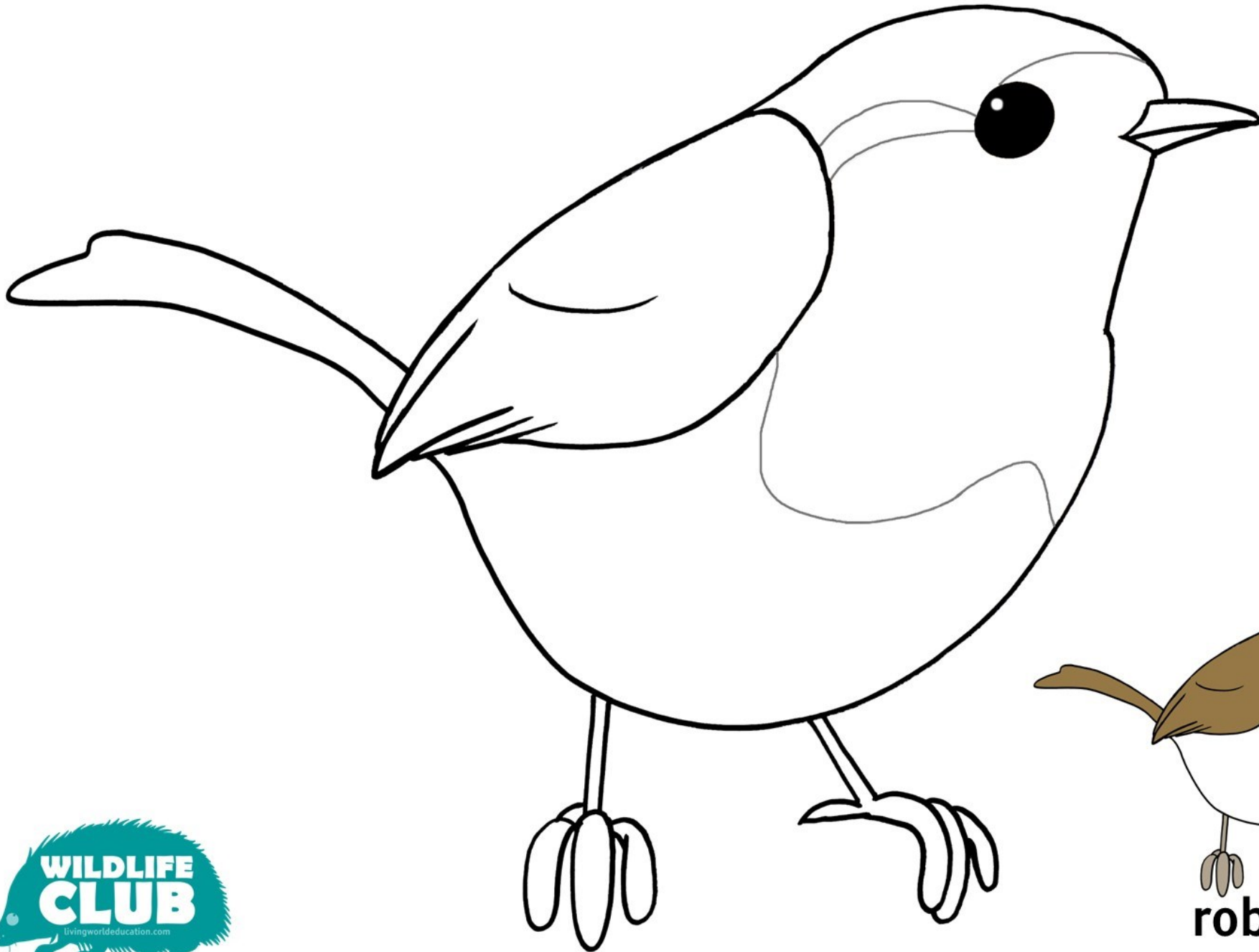


**bullfinch**

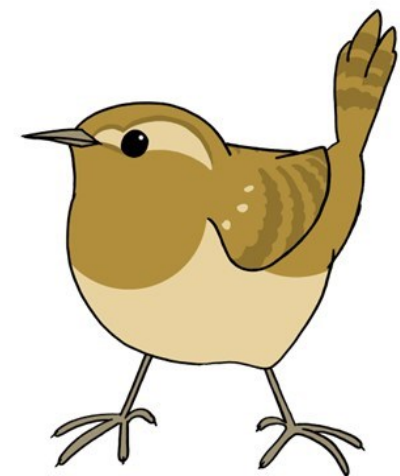
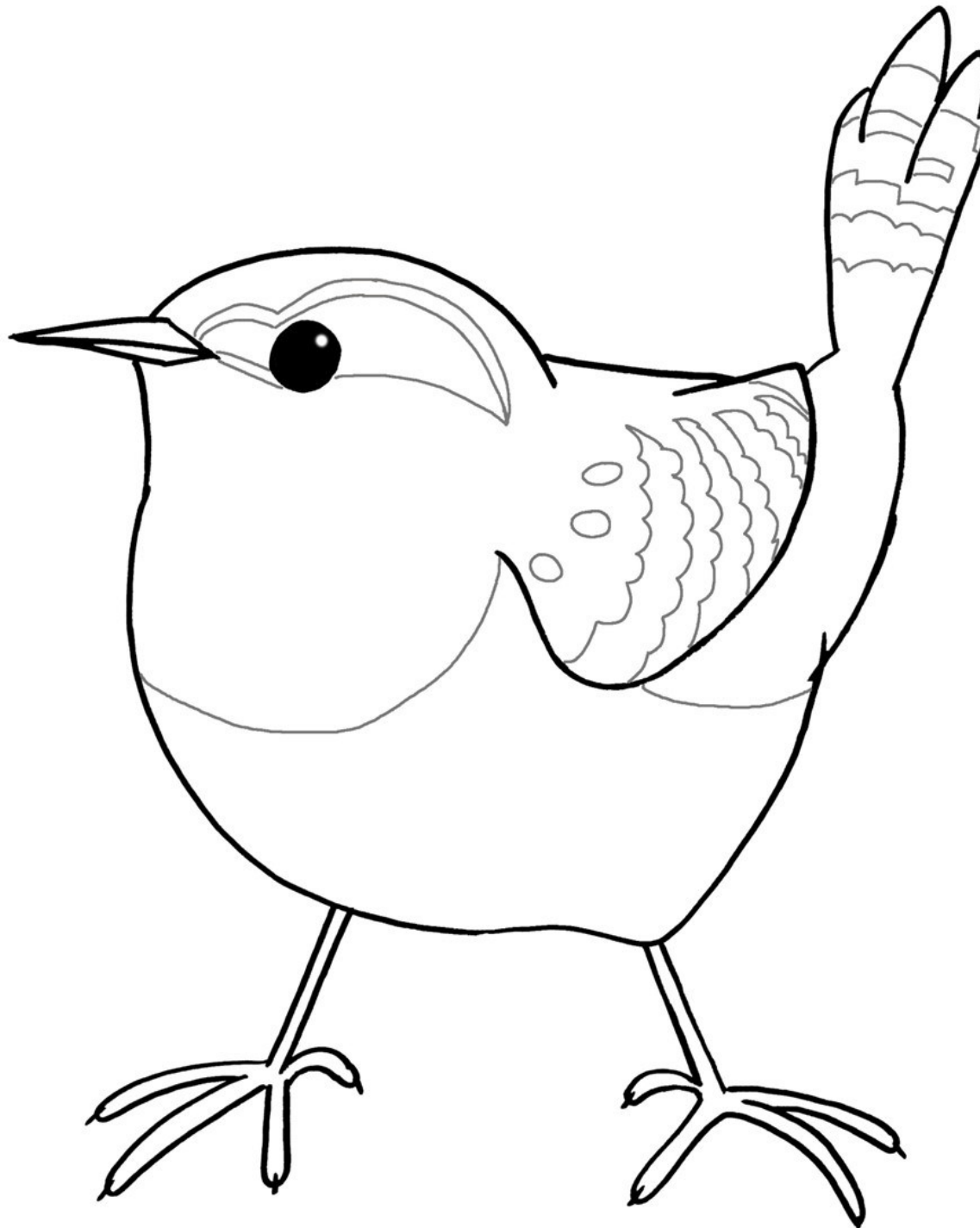




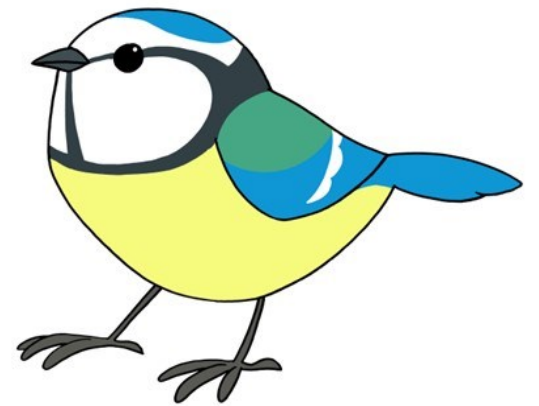
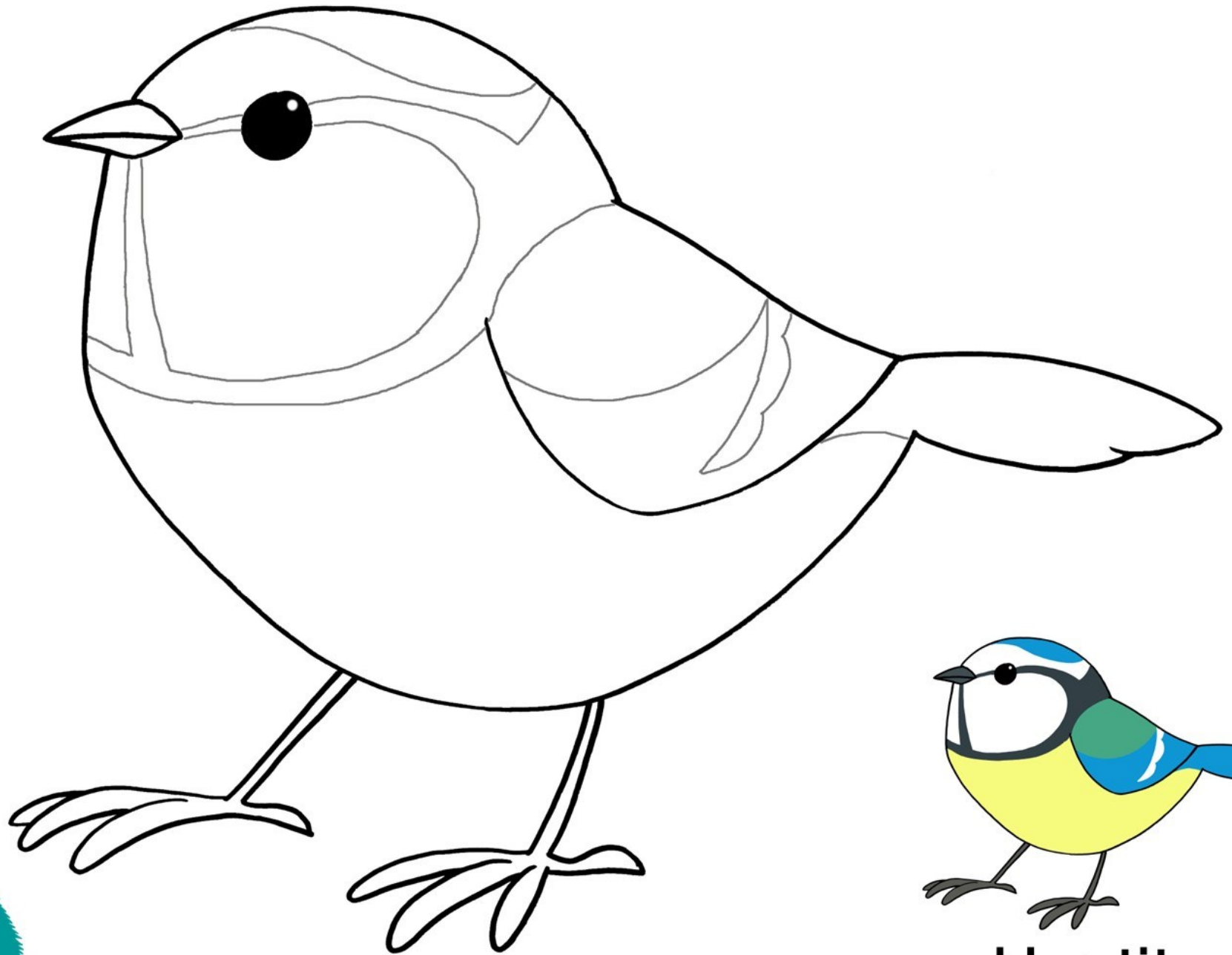
chaffinch



robin



**wren**



**blue tit**