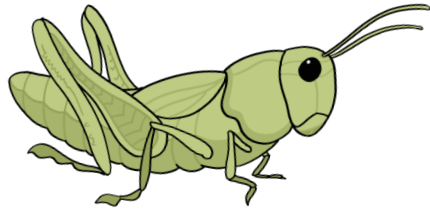
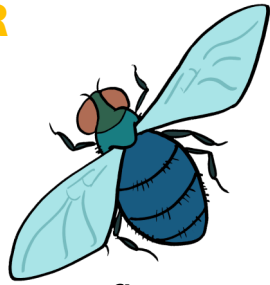


IDENTIFYING MINIBEASTS

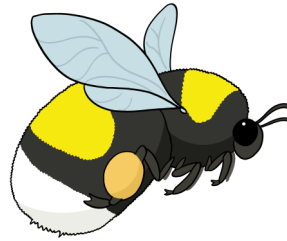
ON PLANTS/ IN THE AIR



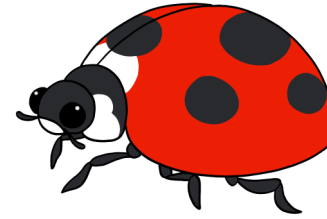
grasshopper



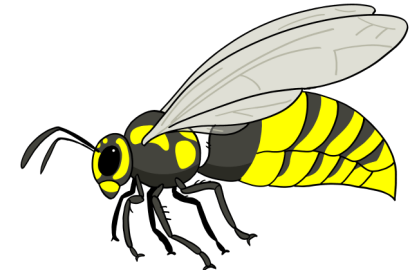
fly



bee

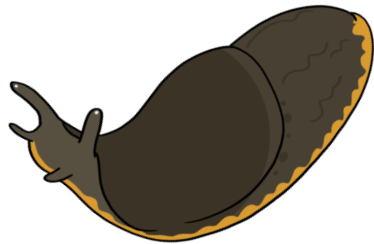


ladybird

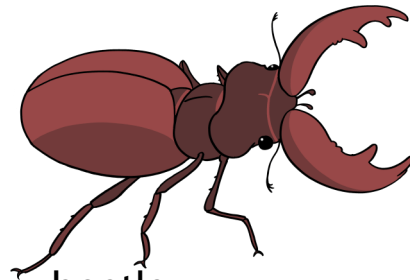


wasp

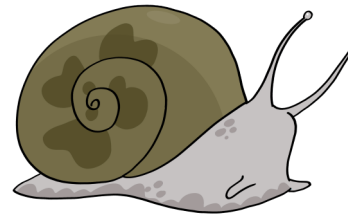
UNDER ROCKS, LOGS AND LEAVES



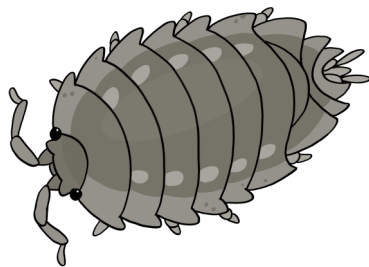
slug



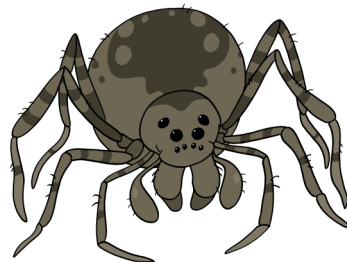
beetle



snail



woodlouse

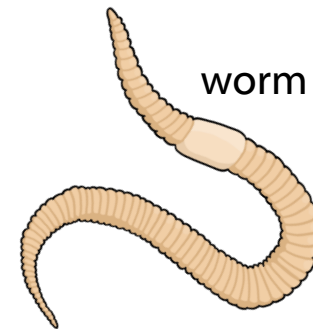


spider

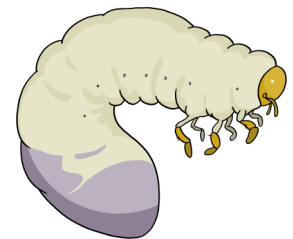


ant

IN THE SOIL



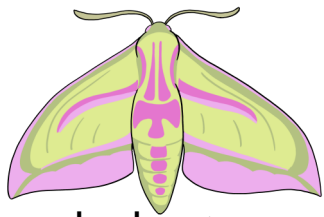
worm



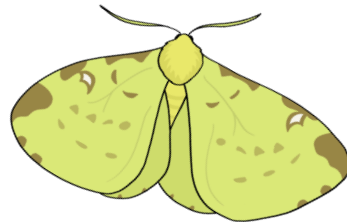
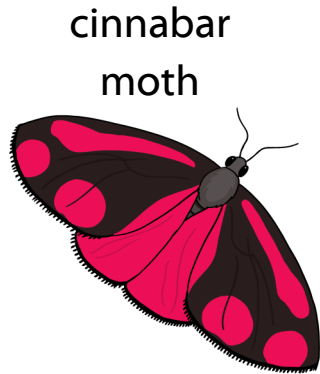
Grub
(beetle larvae)

IDENTIFYING MINIBEASTS

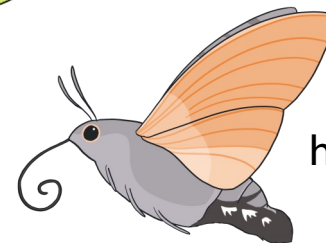
MOTHS



elephant hawk moth



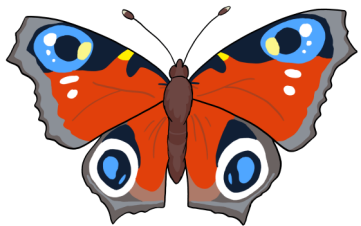
brimstone moth



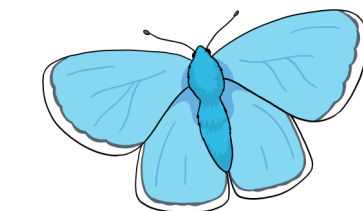
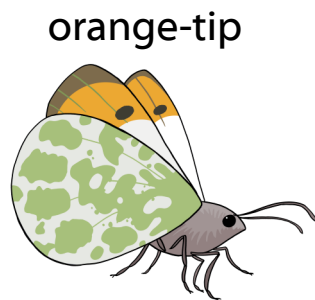
hummingbird hawk moth



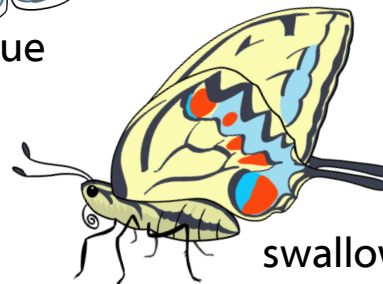
BUTTERFLIES



peacock butterfly



common blue butterfly



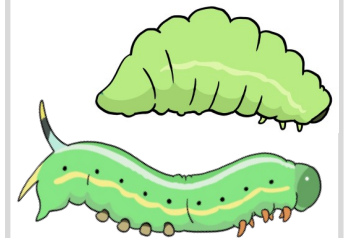
swallowtail



EGGS



CATERPILLARS

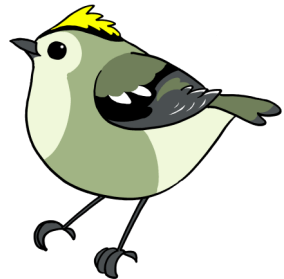


CHRYSALIS

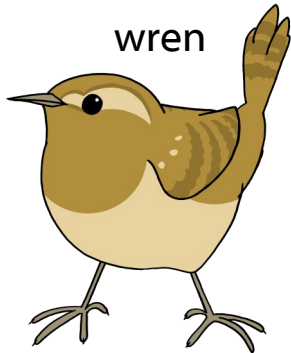


IDENTIFYING GARDEN BIRDS

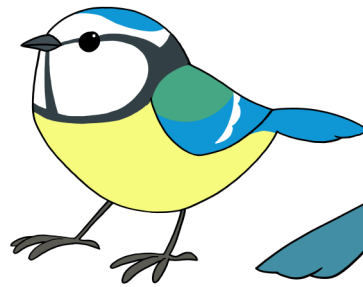
GARDEN BIRDS (sheet 1)



goldcrest



wren



blue tit

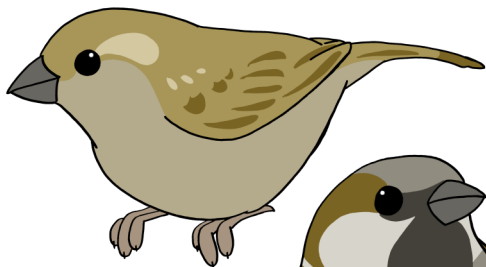
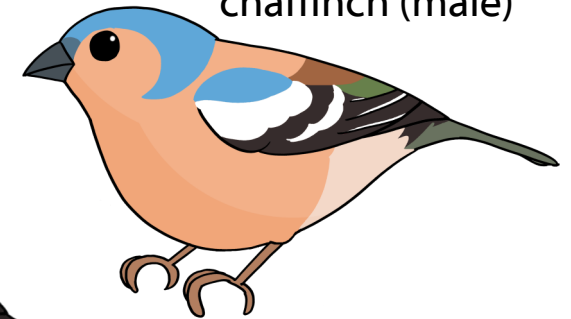
great tit



long-tailed tit



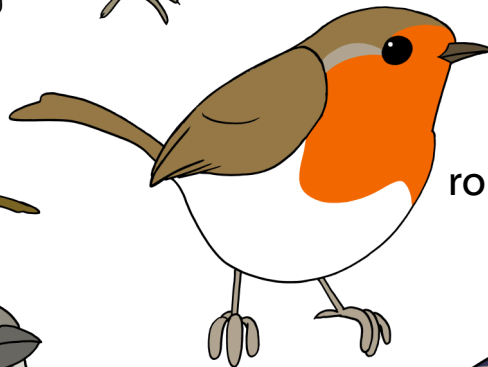
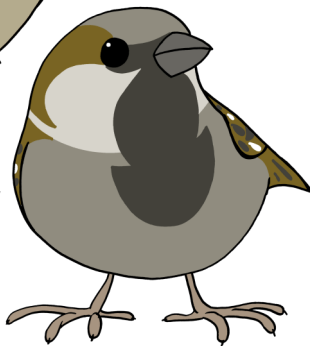
chaffinch (male)



(female)

house sparrow

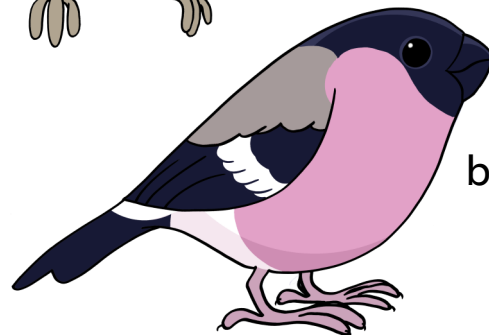
(male)



robin



goldfinch



bullfinch



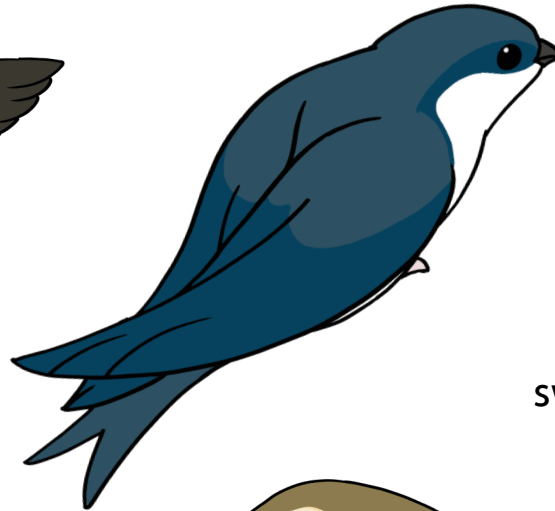
nuthatch

IDENTIFYING GARDEN BIRDS

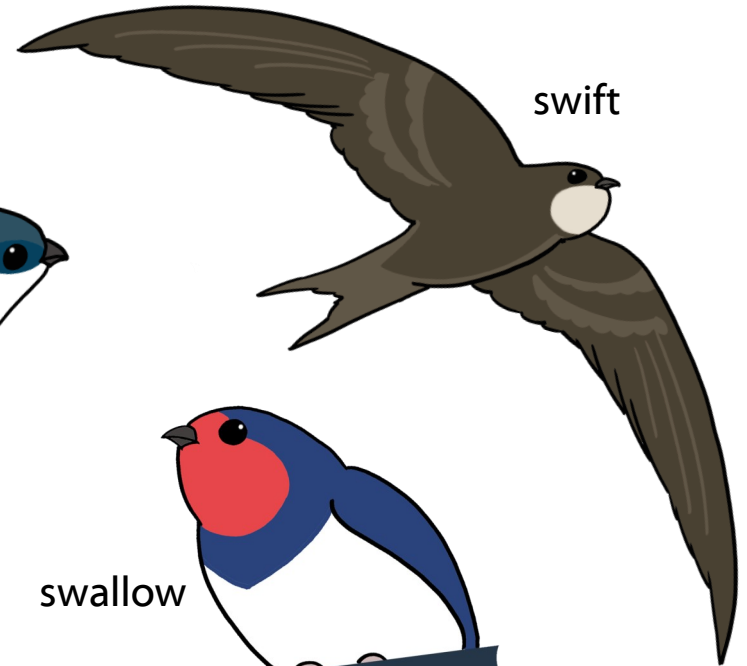
GARDEN BIRDS (sheet 2)



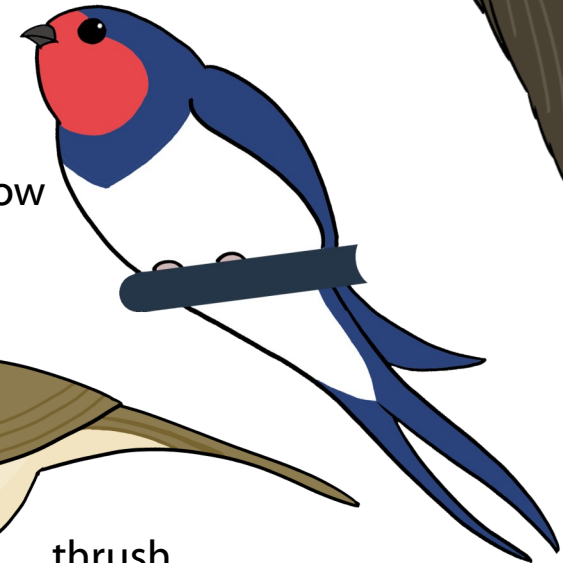
starling



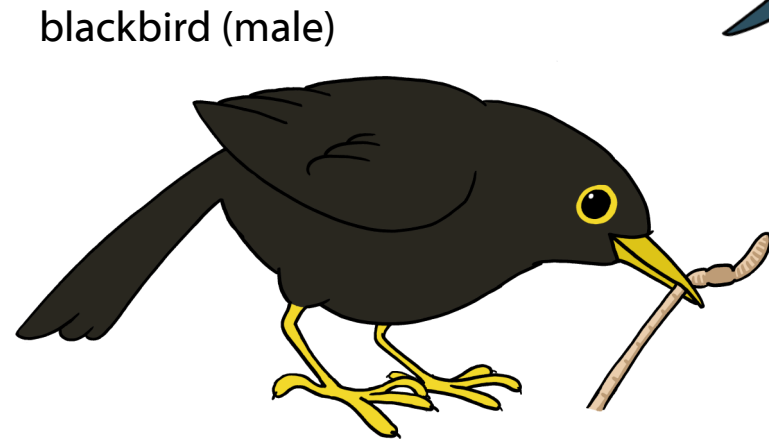
house martin



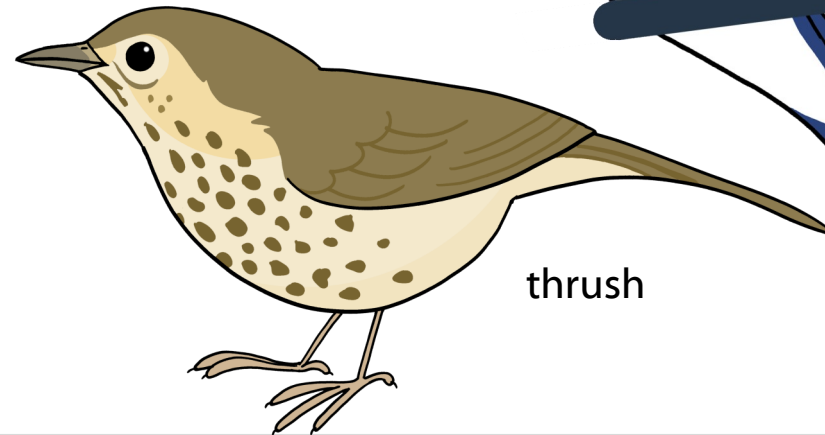
swift



swallow



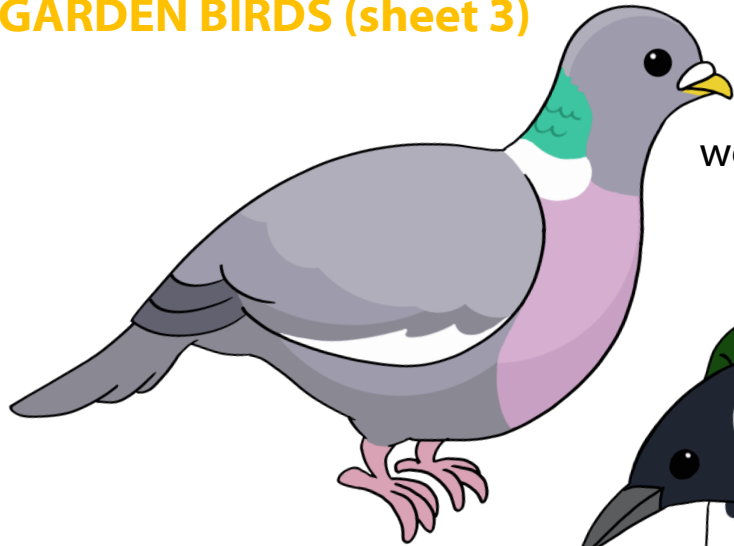
blackbird (male)



thrush

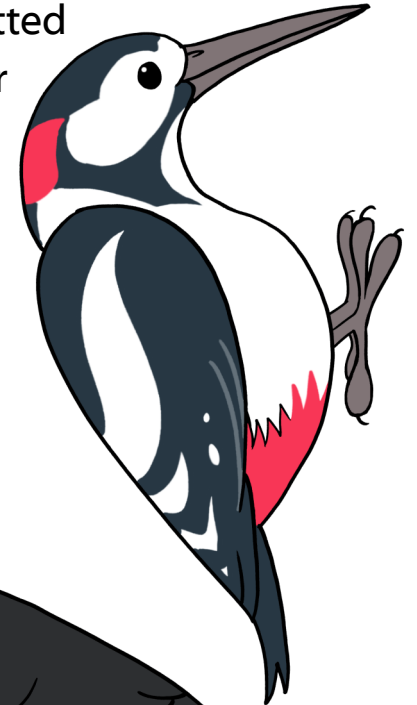
IDENTIFYING GARDEN BIRDS

GARDEN BIRDS (sheet 3)

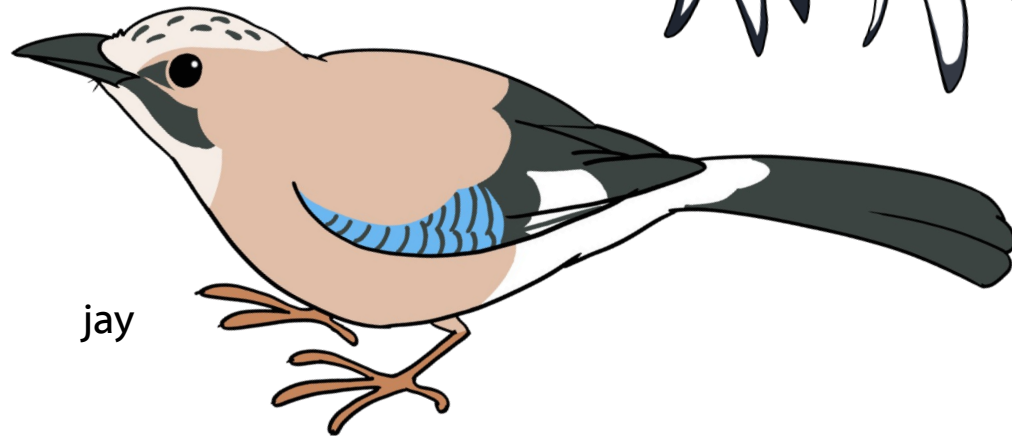


wood pigeon

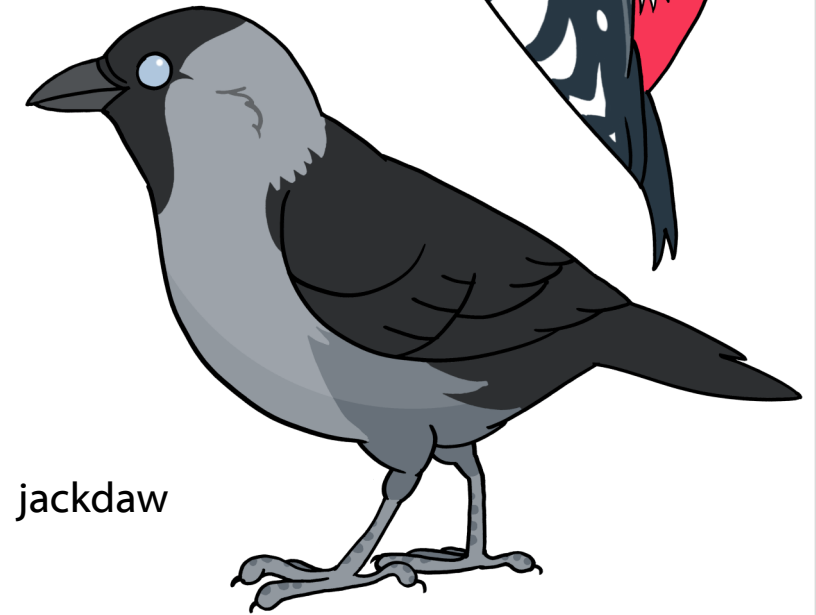
greater-spotted woodpecker



magpie



jay



jackdaw