



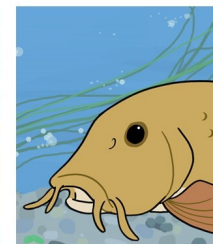
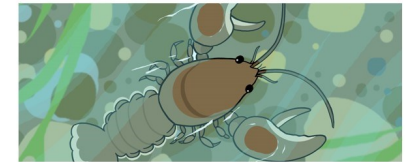
Why are clean rivers important?

- Check out the various creatures that live in rivers and streams on our picture sheets. **Cut them out.**
- Create a **split view display** of life above and below the water ([see the example on the left](#)).
- Use the **River Rescue** sheet to explore the issues that threaten freshwater wildlife.
- Add plant life, rocks and a river bed to your display.



Extend your learning!

- A free downloadable e-book at www.livingworldeducation.com/explorers will give more information about the wildlife of streams and rivers with a short quiz!
- www.livingworldeducation.com/uk-habitats will give more information about the species, ID guides and conservation issues on this topic.

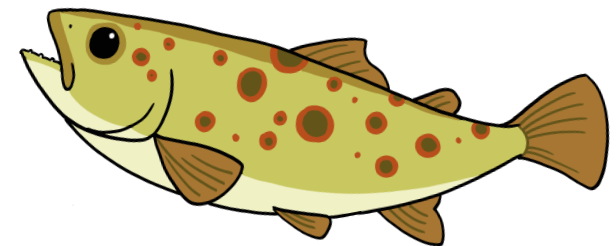


RIVER RESCUE



Our rivers are in great peril. Not a single UK river is classed as having overall good health. The wildlife living in and around them are threatened by a number of issues that include...

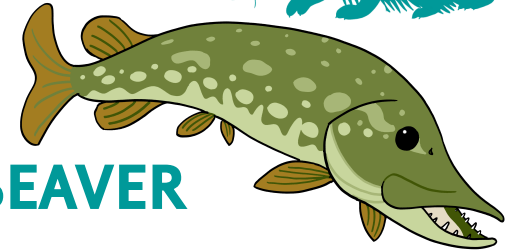
- **Pollution from untreated sewage** discharged in to rivers **poisons** wildlife.
- **Climate change** increases the water temperature, so water hold less oxygen.
- **Extreme weather:** Increased flooding disrupts wildlife and dry, hot periods result in low water levels (further impacted by water being drawn from rivers)
- **Habitat loss** from human developments.
- **Chemical nutrients** from some intensive farming cause **algal blooms** which **poison** waters and **removes oxygen**, killing aquatic life.



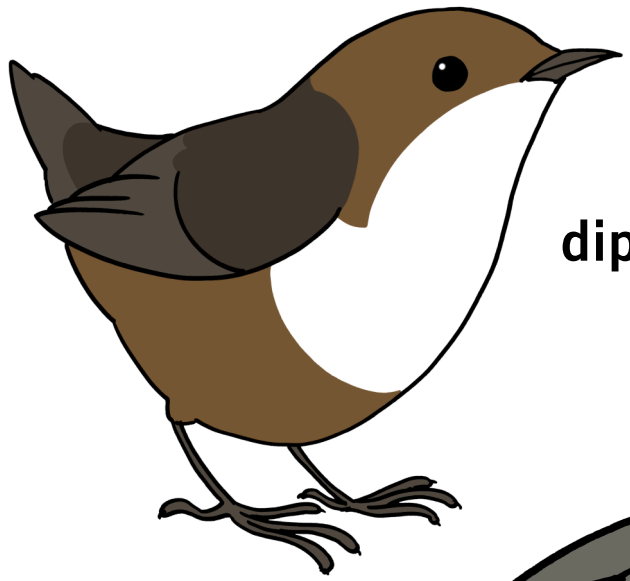
Have a discussion with your Wildlife Club. You will have a local Member of Parliament (MP) who you can write to. You may wish to ask what they are doing about this?

RIVER RESCUE

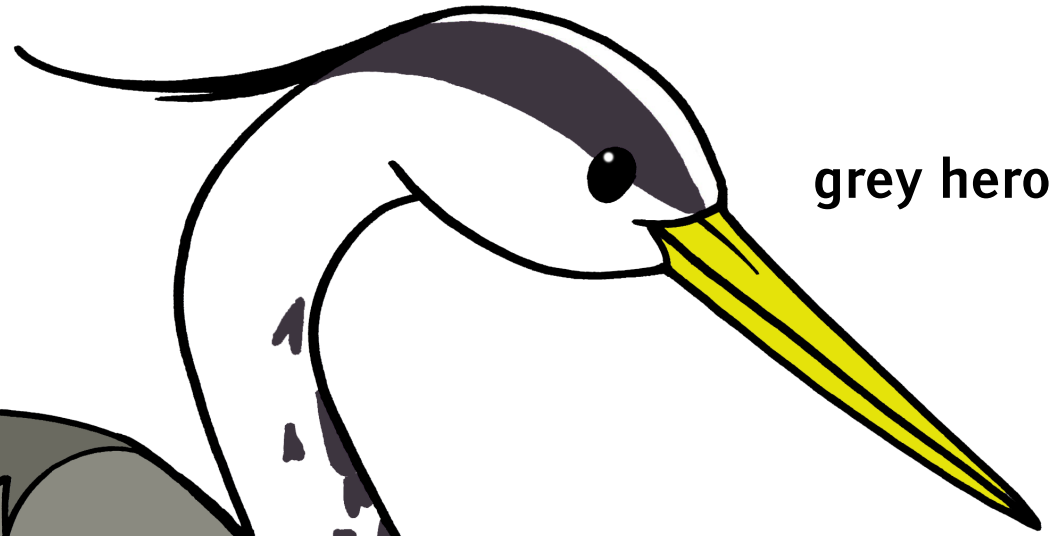
A X E P S I M V X H
N H S I F Y A R C R
Z R D K B Y U C D H
Q C A E T K A W J E
W A T E R V O L E R
V X W C G N T Q M O
R P O L L U T I O N
B E L I W Y E S O F
H M L M J E R M R C
U B E A V E R G H R
S I U T V D A K E I
S D E E R T Z A N T
O V Y T U O R T X S



BEAVER
CLIMATE
CRAYFISH
HERON
MOORHEN
OTTER
PIKE
POLLUTION
REEDS
TROUT
WATERVOLE



dipper

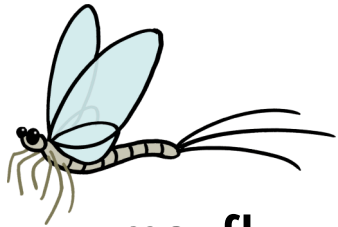


grey heron



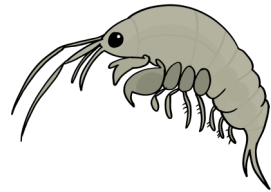
kingfisher





mayfly

water



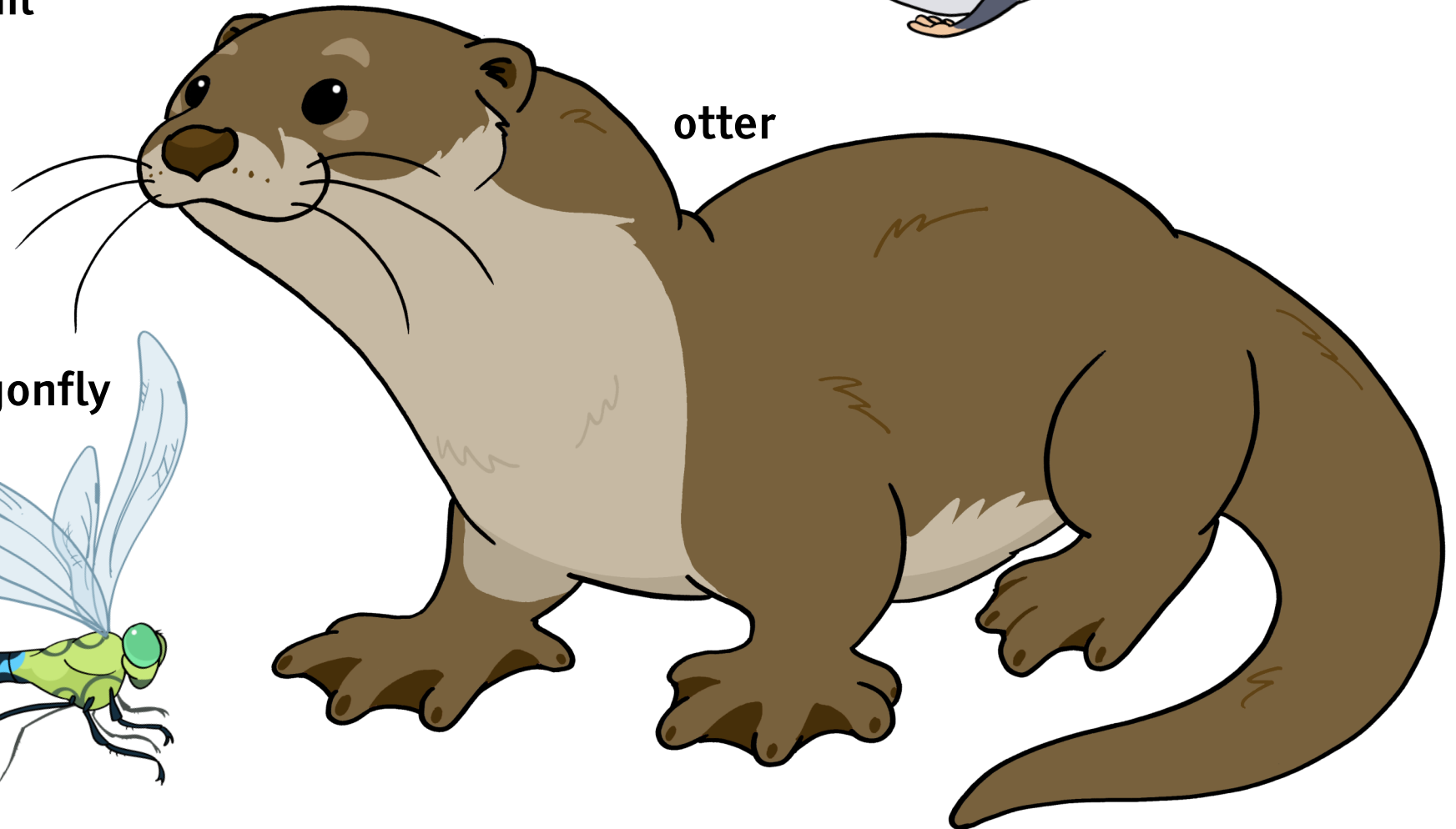
water shrew



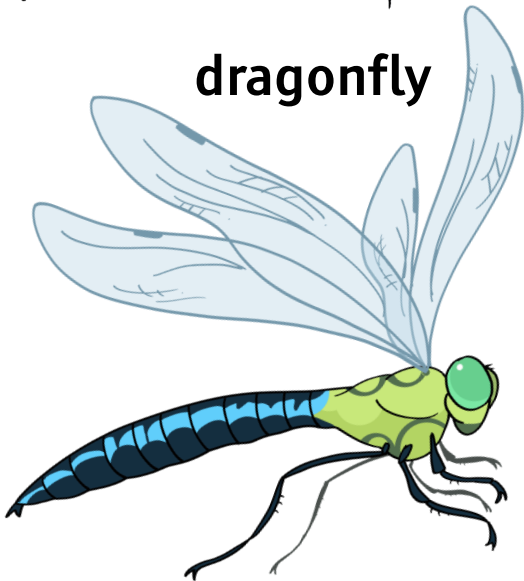
ramshorn snail



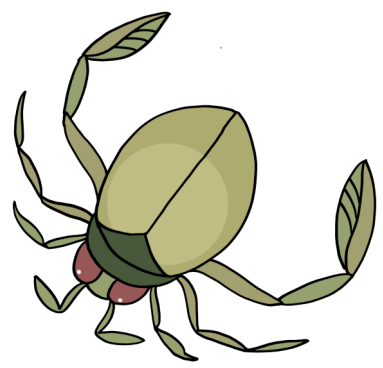
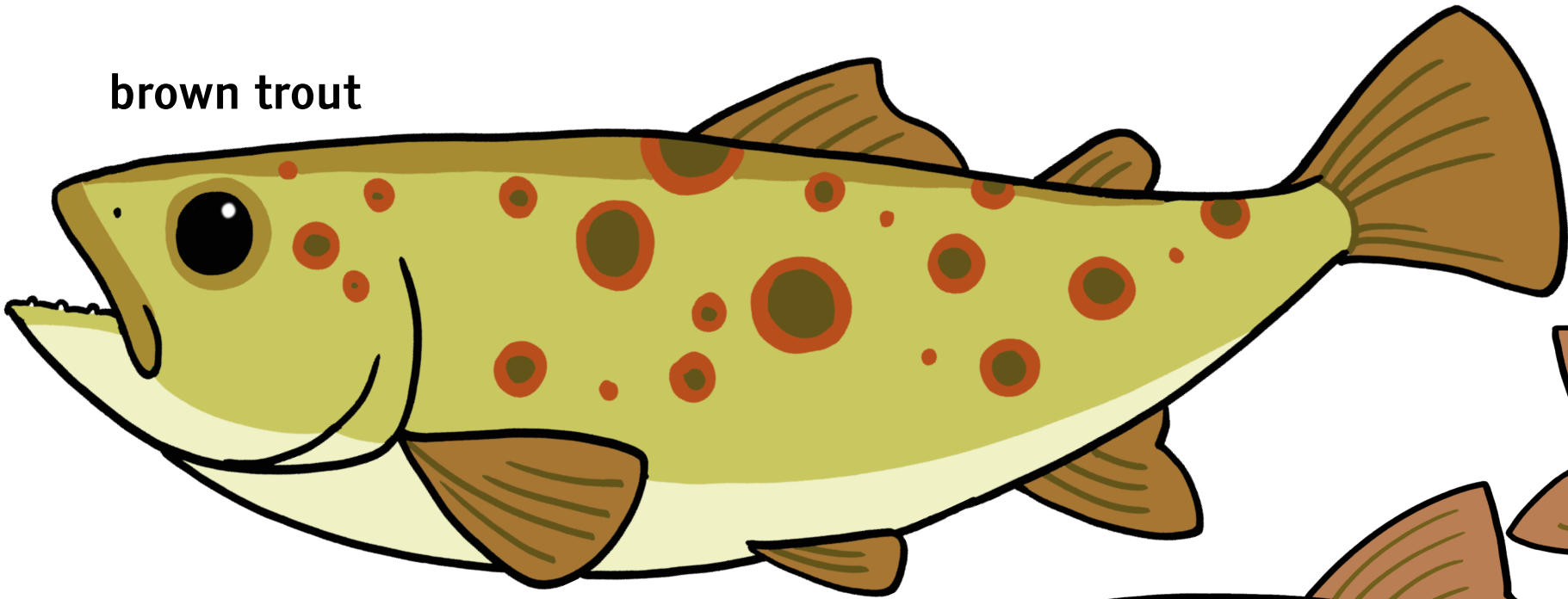
otter



dragonfly

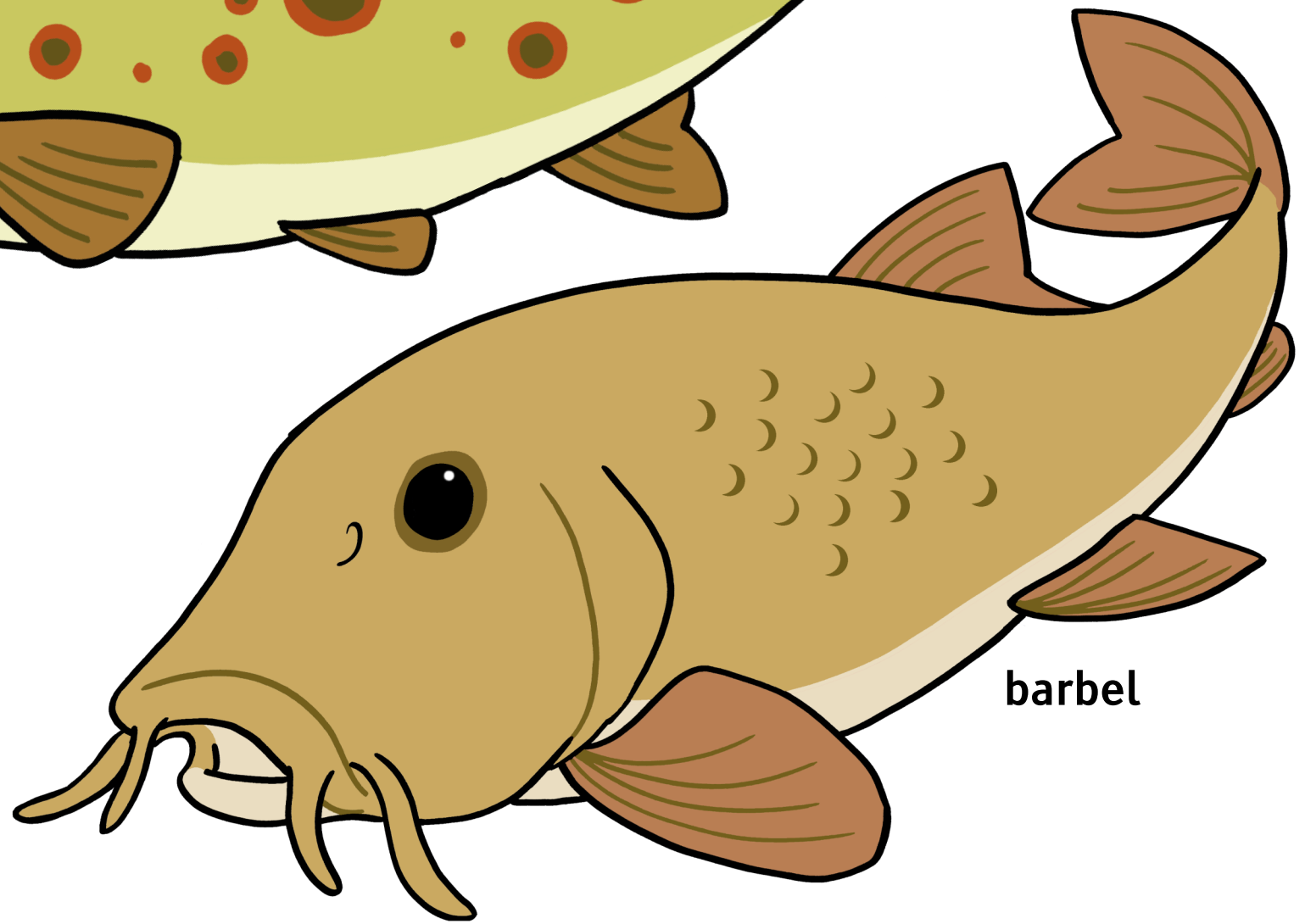


brown trout

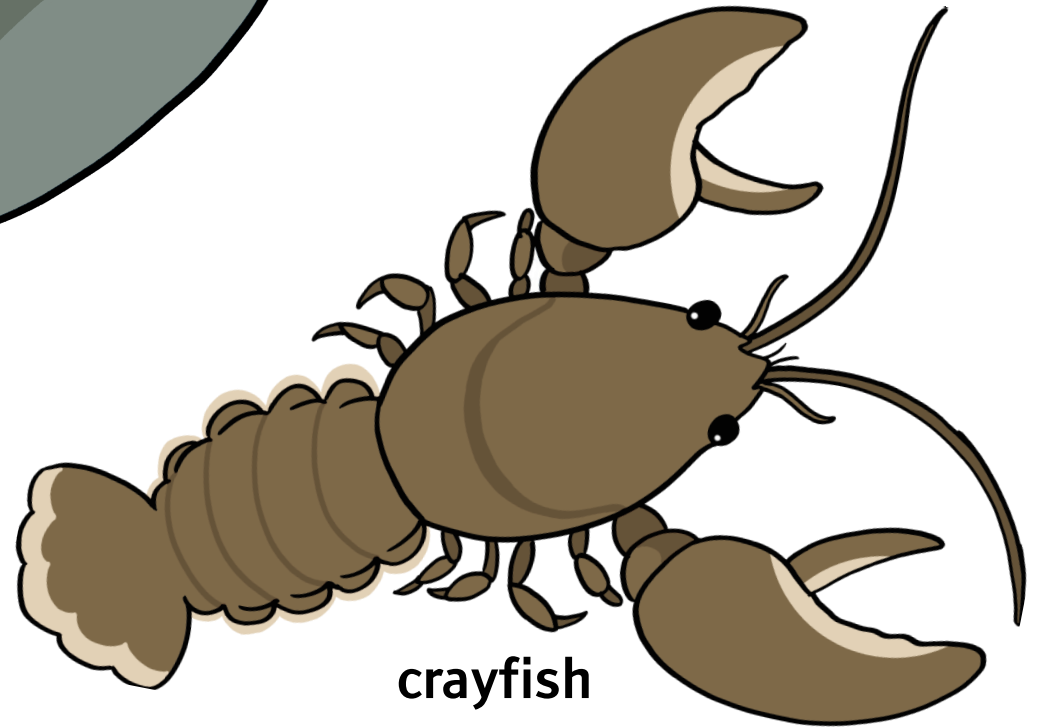


backswimmer

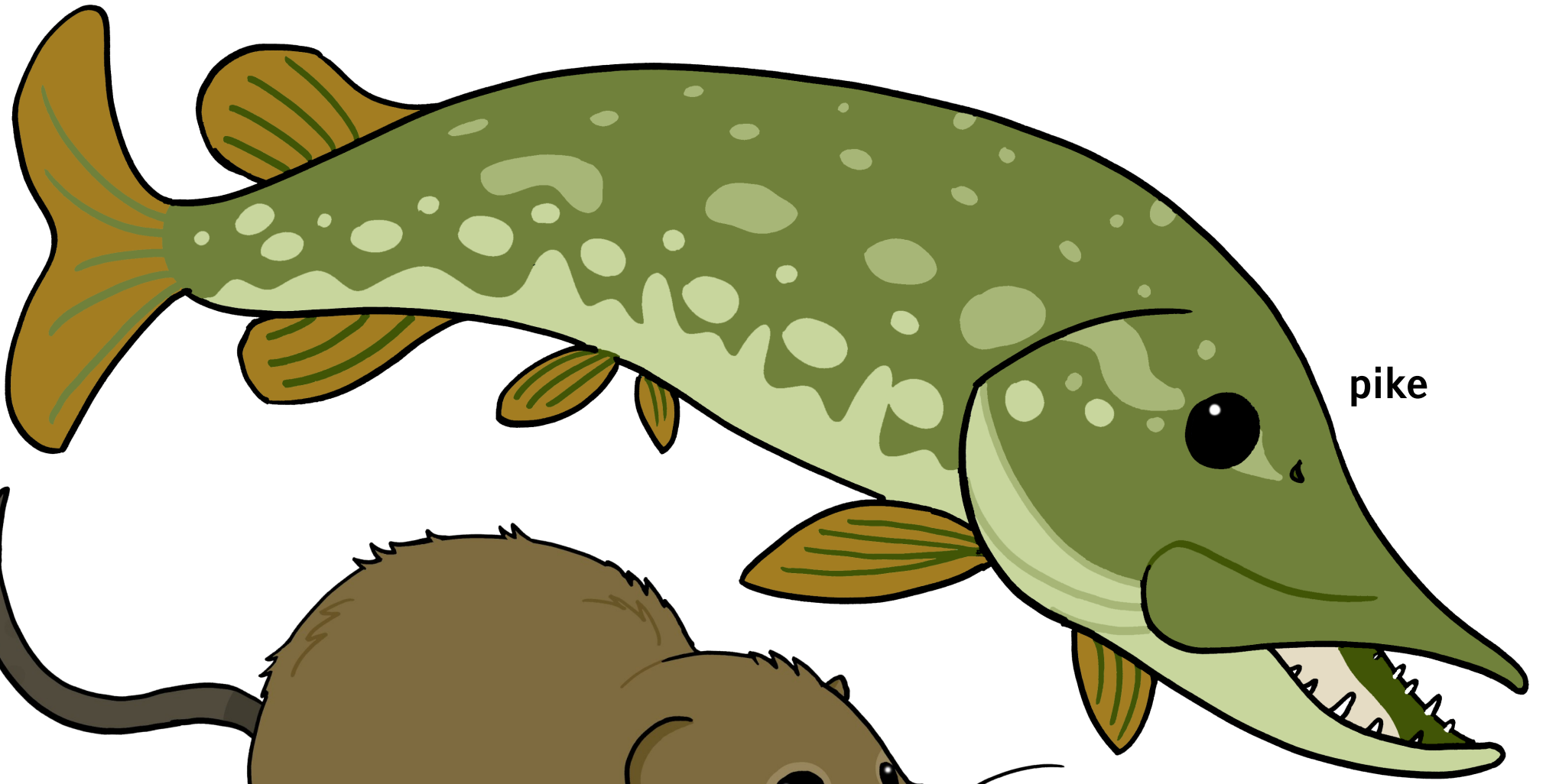
barbel



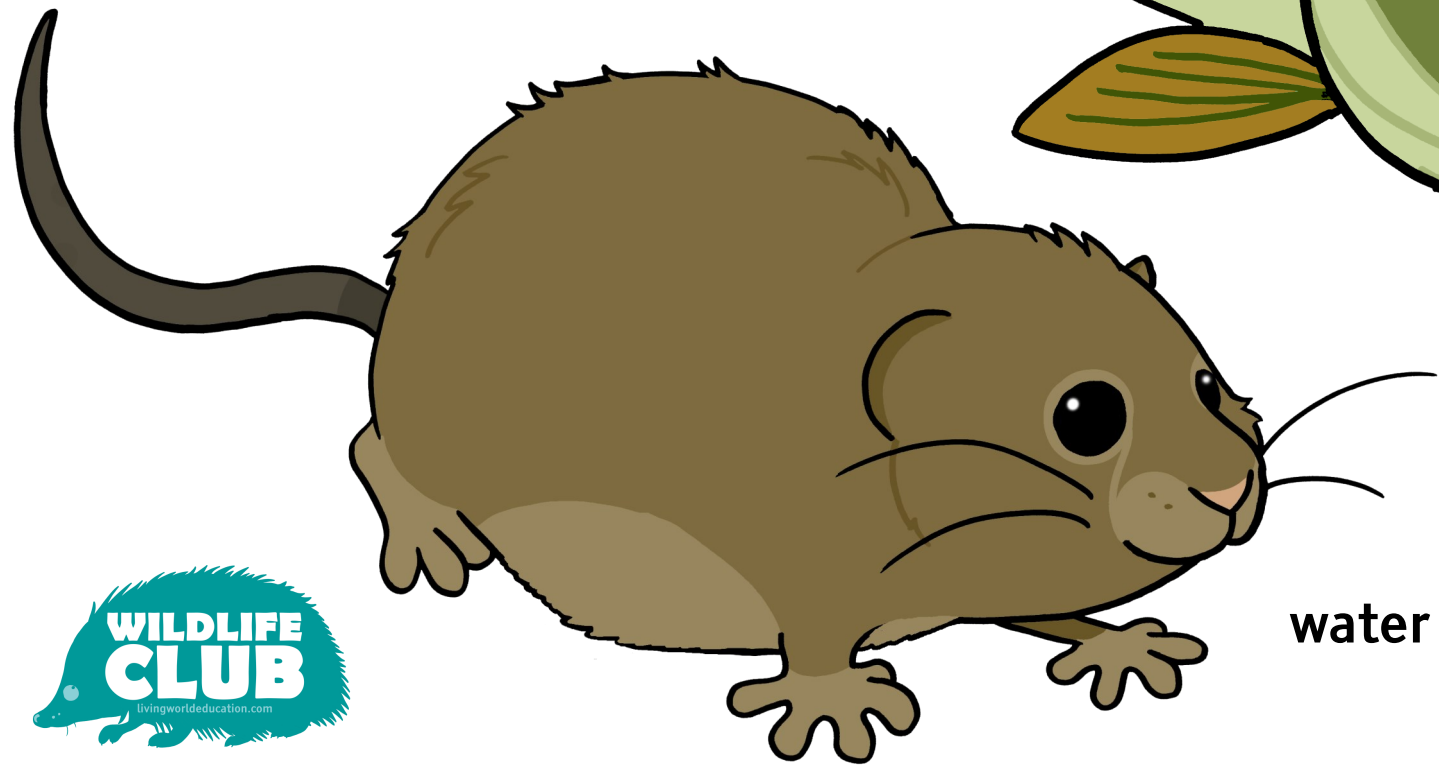
beaver



crayfish



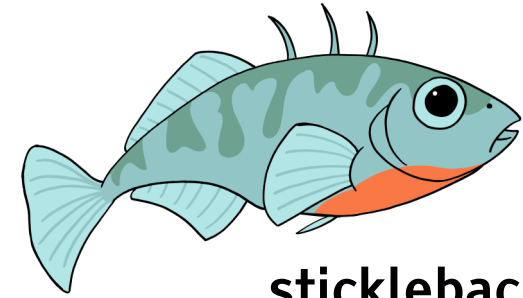
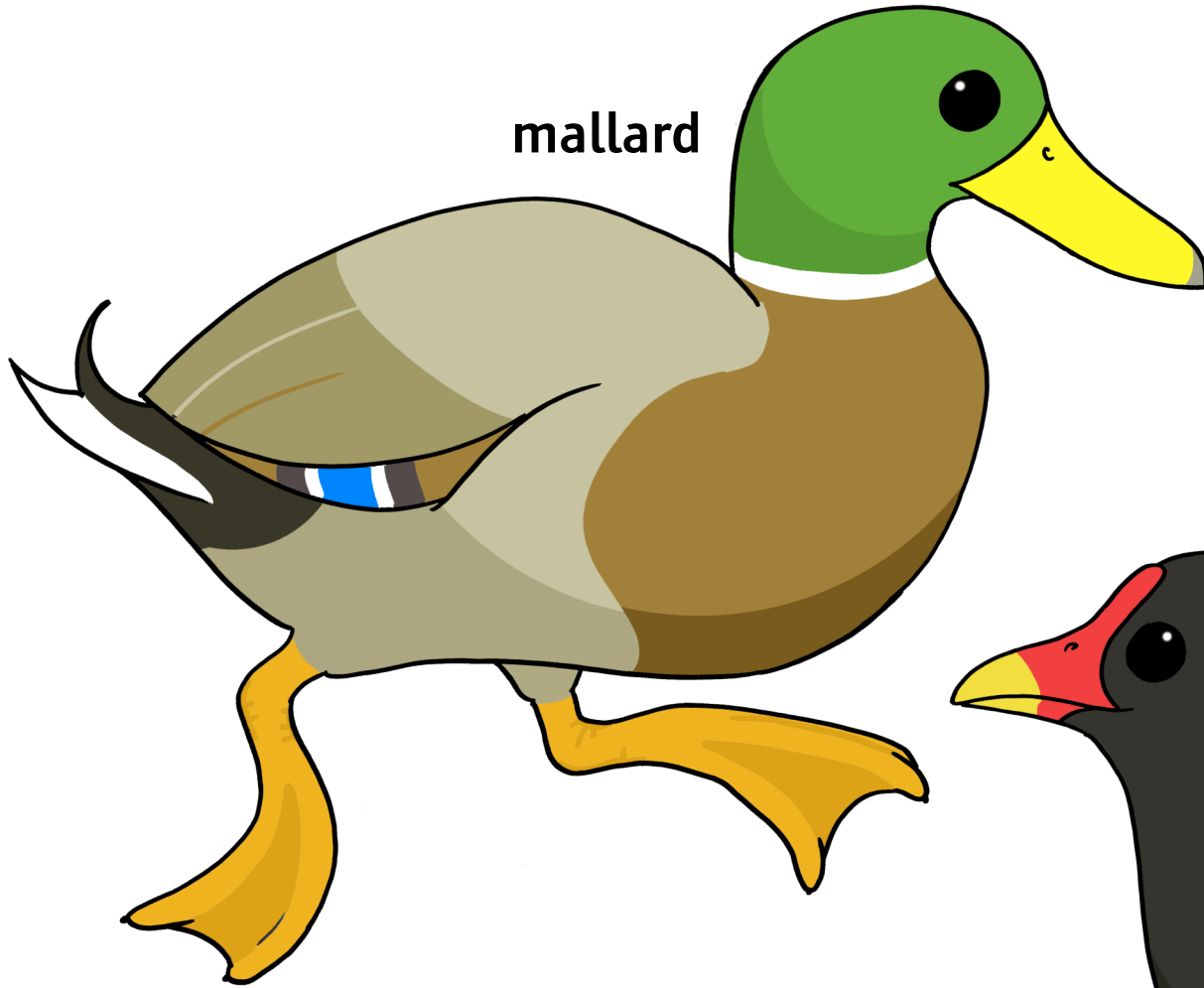
pike



water vole



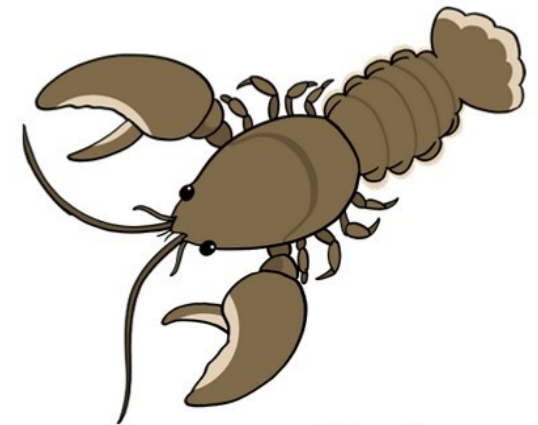
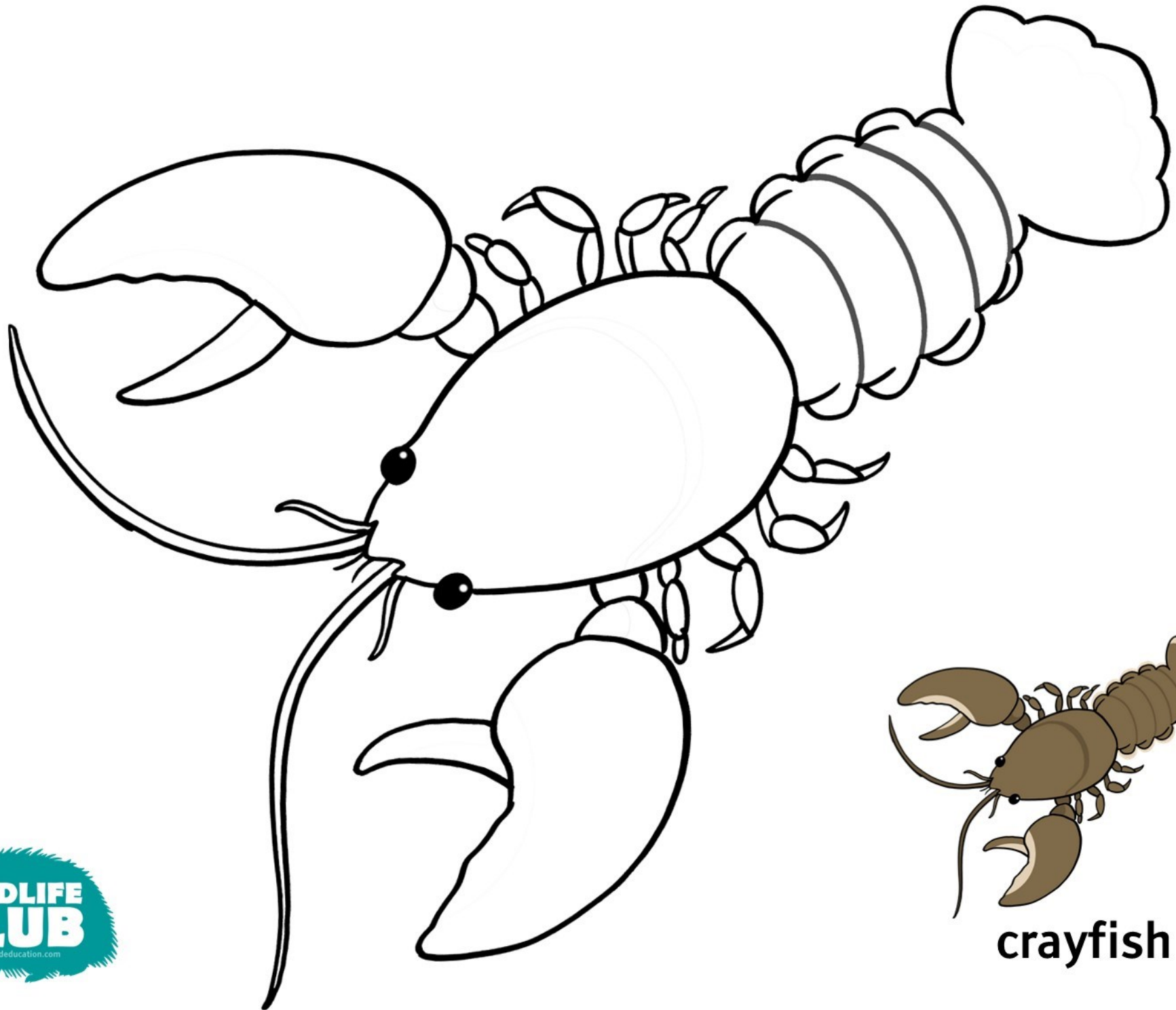
mallard



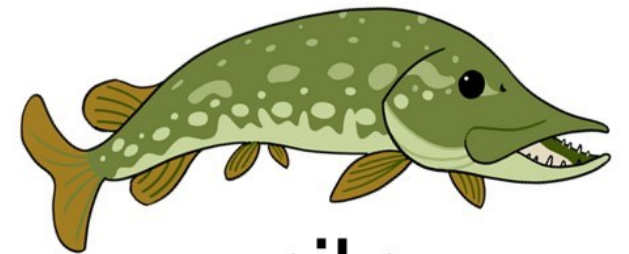
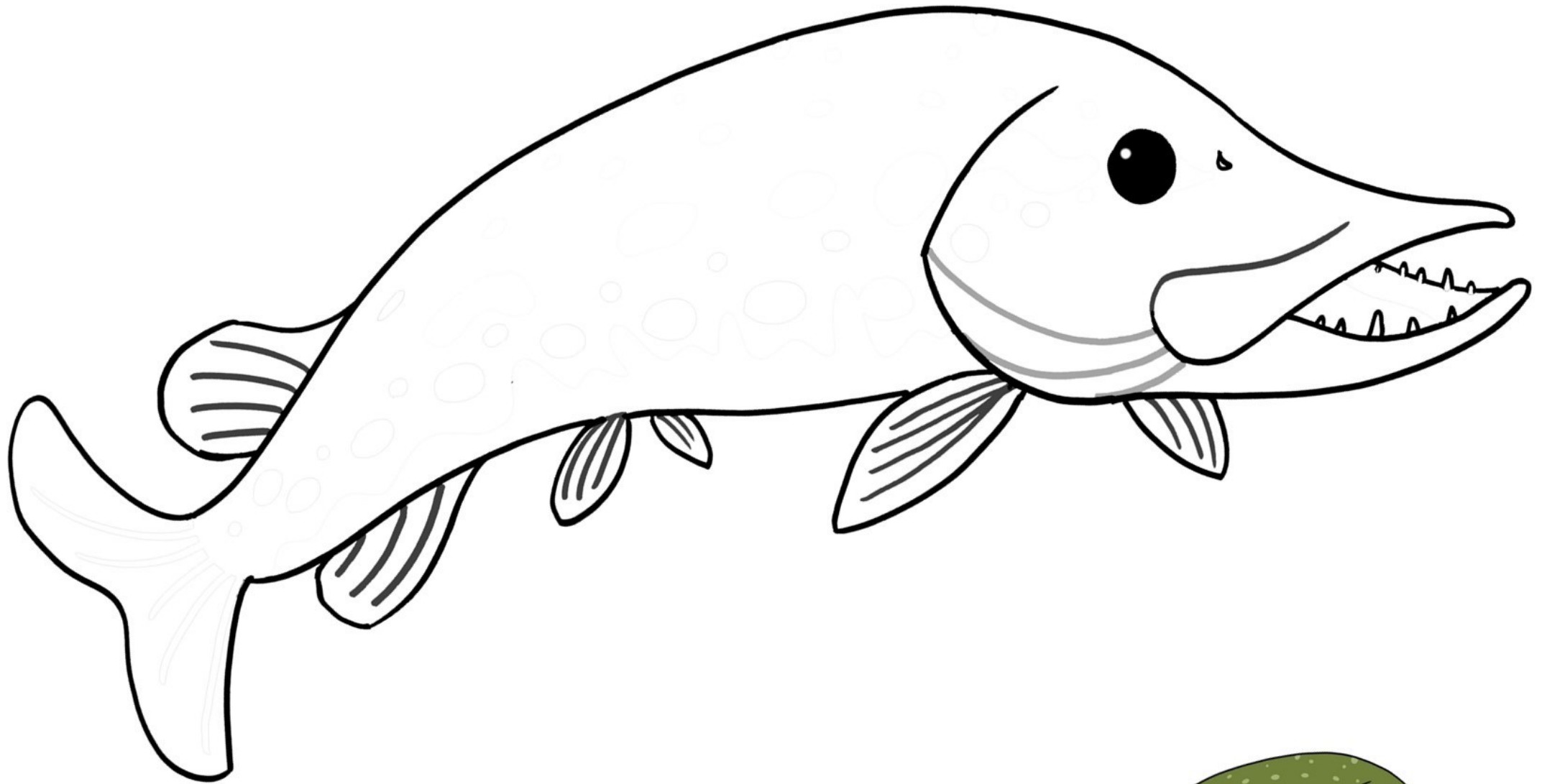
stickleback

moorhen





crayfish



pike