



Scientists classify all living things based on shared characteristics.

Use the clues to group the creatures together.

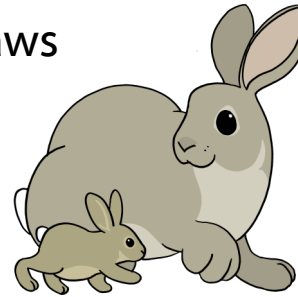
## Mammals

- All feed their young milk

Most have...

- Ear lobes
- Fur
- Teeth and claws

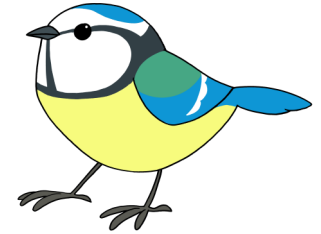
Example **rabbit**



## Birds

- Young hatch from eggs
- All have Ear lobes
- Fur
- Teeth and claws

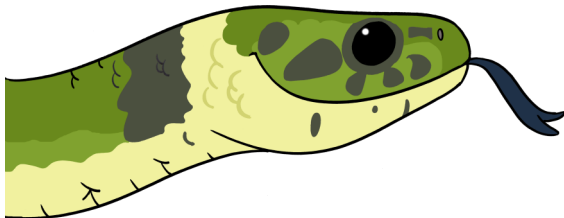
Example **blue tit**



## Reptiles

- Scales over their bodies
- Lay eggs with leathery shells
- Warm their bodies in the sun

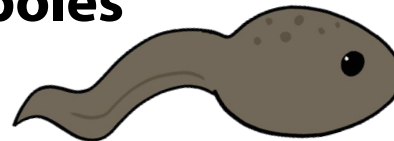
Example **grass snake**



## Amphibians

- Lay jelly eggs in water
- Change into adults from larval form (e.g. tadpole)
- Come on to land when older
- Thin, moist skin

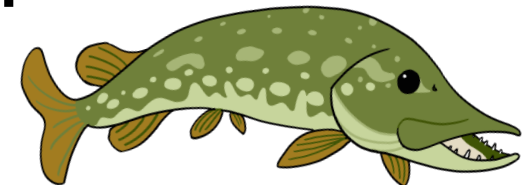
Example **tadpoles**

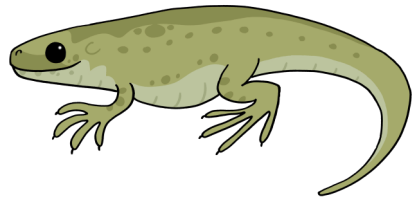


## Fish

- All have fins
- Scaly skin
- Have gills

Example **pike**

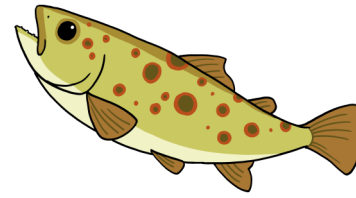




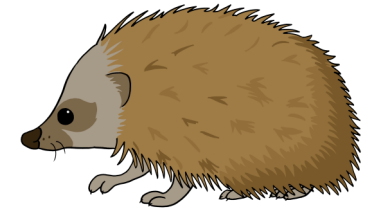
**lizard**



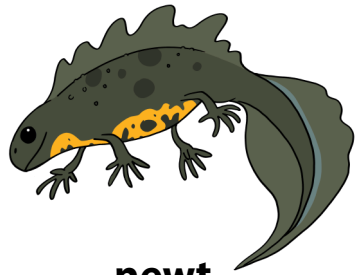
**ladybird**



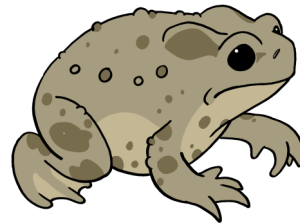
**trout**



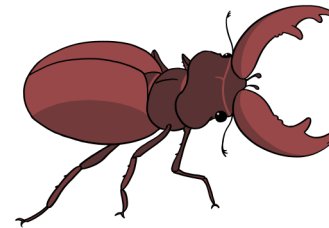
**hedgehog**



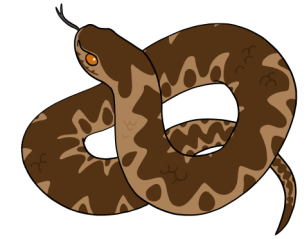
**newt**



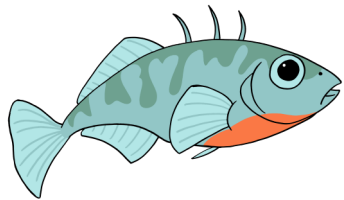
**toad**



**stag beetle**



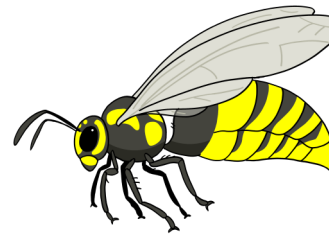
**adder**



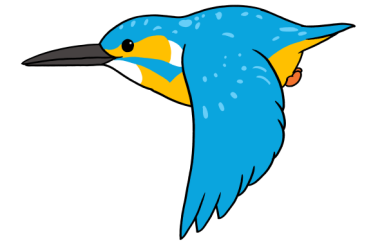
**stickleback**



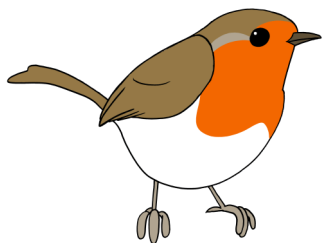
**frog**



**wasp**



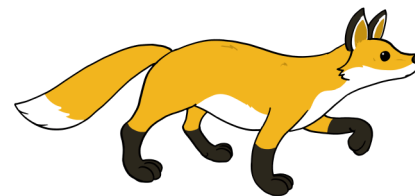
**kingfisher**



**robin**



**mouse**



**fox**



**falcon**

# Check your answers

