



BGM Contractors
Plumbers Since 1969.

INDUSTRIAL PLUMBING

Contents

- Company Profile.....04
- Our Clients.....06
- Roads & Tunnels.....08
- Rail.....11
- Corporate Governance.....15
- Technology & Design.....14
- Health & Safety.....16





Australian Family Owned & Operated

Company Profile .

A division of B&G Enterprises (NSW) Pty Ltd

BGM Contractors is the Construction/Industrial Plumbing division of parent company B&G Enterprises (NSW) PTY LTD BGM was formed by (Managing director) Grahame Guntons son Matthew Gunton.

From the beginning BGM Contractors key focus was to provide Tier 1 & Tier 2 construction contractors with an established Civil plumbing service.From Day one - site establishment to final demobilization of the project BGM is classed as a project partner not only for the beginning or end of a project but the entirety length of our clients project.BGM have one of the highest Client satisfaction rating in the industry for our -

Quick response for emergency situations - to our 5 decades of knowledge in the plumbing industry our clients feel entrusted with our expertise in the plumbing field.B&G Enterprises (NSW) P/L Trading as BGM Contractors have over 10 years of experience in the infrastructure sector - working on projects worth over and above \$4 Billion AUD BGM contractors continues to be one of the fastest growing and most relied upon construction plumbing services available for Australia's Largest Civil Construction Contractors.

50 Years of True Expertise and Knowledge Coupled with our Parent Company we employ over 50 + Full-Time employees.

We are your Project Partners.

Scope & Capacity -

B&G Enterprises have industry specific accreditations coupled with our experience which provides us with the opportunity to offer our clients an all-round solution to their Private , Rail , Mining and infrastructure projects.

- Plumbing
- HDPE Welding
- Site Establishment
- Hydraulics design
- Drill & Tap of Unknown Services
- Asset Maintenance

Our Mission

B.G. Enterprises' mission is to provide an outstanding and professional service based on a foundation of never compromising on quality or safety. In our spirit of continuous improvement, we continually strive to not only meet but consistently exceed their expectations in every aspect of our work.

Our Values

Our values are what guide us as individuals, as a team, and as a company.

Integrity

Our reputation is built on being people of our word; we work hard to create and maintain relationships based on mutual trust.

Respect

Everyone with whom we come in contact will always be treated with the utmost respect and courtesy.

Pride

We're proud of the work we do for our community and are committed to upholding the good name of our industry.

Quality

From the materials we use, to the management systems we employ, to the individuals we choose to have on our team, quality is always our watchword.

From Humble Beginnings

In the early 1960s, Penrith locals Barry and Margaret Gunton poured their energies and entrepreneurial spirit into establishing a business which would come to be known as BG Plumbing. Unafraid of hard work, the couple's down to earth manner, honesty and transparency combined with their quality workmanship soon saw their business thrive. Under Barry's leadership, B.G. Plumbing continued to grow, including investing in the expansion of its trade services in the 1980s.

It was during this time that Barry was thrilled to welcome his eldest son Grahame into the firm, seeing him join as one of their many top tradespeople. Barry was equally delighted when, following his retirement in 1997, Grahame and his wife Michelle took control of operations, re-launching the brand as B.G. Enterprises (NSW) Pty Ltd in 2000.

Today.

This strong family business continues to flourish.

We are the proud winner of the 2016 Local Business Awards – Trades Category and continue to provide maintenance services to government agencies, community housing associations, real estate offices, and asset managers.commercial and working on some of the nations largest infrastructure projects to date. .



Our Clients - Trusted by the world's Best -

**JOHN
HOLLAND**

CPB
CONTRACTORS

lendlease

LAING O'ROURKE

**BOUYGUES
CONSTRUCTION**

Downer
Relationships creating success

Hanson

coateshire

SAMSUNG
SAMSUNG C&T

**Transport
Sydney Trains**

Transport

Ghella

**50 Real
Years of
Experience**



Roads & Tunnels -

BGM Contractors have been instrumental in assisting with Hydraulic Temporary & Permanent Plumbing works on Some of Australia's Largest Road & Tunnel Infrastructure Projects.

Our Road , Tunnel & Infrastructure Projects -

WestConnex - Stage 3A - M4-M5 Link Main Tunnels

Client: Lendlease Samsung Bouygues Joint Venture LSB JV

Value: -Ongoing

Scope: Site Establishment - Project wide support Plumbing infrastructure pipelines , labour Support ,Water , gas , sewer , Storm water Services

Start: Q4 2019

Project Details: The M4-M5 Link Tunnels project is the final and most critical component of WestConnex, featuring twin tunnels between the New M4 at Haberfield and the New M5 at St Peters. Each tunnel will be approximately 7.5 kilometres long and able to accommodate up to four lanes of traffic in each direction. The M4-M5 Link Tunnels will be delivered as a stand-alone project, and provide an additional 2.5 hectares of green space in St Peters.



WestConnex - Stage 3B - Rozelle Interchange Iron Cove Link & Western Harbor Tunnel

Client: John Holland & CPB contractors Joint Venture

Value: -Ongoing

Scope: Complete Project Plumbing Requirements

Start: Q2 2019

Project Details:

Stage one- construction of the M4-M5 Link Tunnels between the New M4 at Haberfield and the New M5 at St Peters and stub tunnels to the Rozelle interchange. The contractor on this stage is Lendlease Samsung Bouygues Joint Venture (LSBJV). This stage is being managed by Sydney Motorway Corporation. Stage two - construction of the Rozelle Interchange and Iron Cove Link. The contractor on this stage is John Holland and CPB Contractors Joint Venture. This stage is being managed by Roads and Maritime Services. The Rozelle Interchange and Iron Cove Link is the part of the M4-M5 Link and will provide a new underground motorway interchange to City West Link and provide an underground bypass of Victoria Road between Iron Cove Bridge and Anzac Bridge, with links to the future Western Harbour Tunnel. The interchange in Rozelle will be mostly underground and located at the site of the old Rozelle Rail Yards. By building the interchange mostly underground, the project will deliver new active transport options in Rozelle and up to 10 hectares of new open space.



WestConnex - Stage 2 - New M5

Client: CPB Samsung Dragados JV

Value: <\$4M - On-going

Scope: Site establishment existing services cap offswater connection sewer gas stormwater de-water systems Concrete batch plant

Start: Q2 2017

Project Details:

Duplicating the M5 East from King Georges Road Interchange Upgrade at Beverly Hills to a new interchange at St Peters. The New M5 will provide twin underground motorway tunnels, nine kilometres long, from Kingsgrove to a new St Peters Interchange at the site of the old Alexandria landfill facility. The St Peters Interchange will provide motorists with connections to Alexandria and Mascot. It also includes connections to the future Sydney Gateway and M4-M5 Link. The New M5 tunnels will be marked for two lanes in each direction, with capacity to add a third and also include underground connection points for the M4-M5 Link and the proposed F6 Extension. Local streets and intersections around the St Peters interchange are also being upgraded to ensure safe and efficient connections for the New M5.



Western Sydney Airport - Bulk Earthworks

Client: CPB Contractors Lendlease Engineering Joint Venture CPBLL JV

Value: <\$4M - On-going

Scope: Site Establishment - Project wide support Plumbing infrastructure pipelines , HDPE Welding, Water , gas , sewer , Storm water Services

Start: Q1 2020

Project Details:

The Bulk Earthworks contract was awarded to CPB Contractors and Lendlease Joint Venture (CPBLL JV) in August 2019. This work involves significant design and construction responsibilities, including moving around 25 million cubic metres of earth to support construction of the major elements of the airport, such as the runway and terminal. Works will also include: survey, investigation and salvage works, vegetation clearing, removing of existing roads, fencing and redundant utilities, construction of temporary site facilities (site offices, carparks and access roads), installation of permanent and temporary drainage



The Northern Road Upgrade - Stages 5 & 6- TNR 5 & 6

Client: CPB Contractors

Value: -Ongoing

Scope: Site Establishment - Property Sewer, Water relocation's - Project water & Sewer Pipelines

Start: Q1 2020

Project Details:

This program of work is part of the Western Sydney Infrastructure Plan (WSIP), a \$3.6 billion road investment program jointly funded by the Australian and NSW governments. The Western Sydney Infrastructure Plan will deliver about 61 kilometres of major road infrastructure upgrades before the opening of the planned western Sydney airport. Through providing improved road network connections, the Western Sydney Infrastructure Plan will transform the region's economy and make western Sydney an even better place to live and do business.



Rail-

BGM Contractors have Unrivalled Experience Providing Temporary & Permanent Hydraulic Services to Clients in the Rail Industry , Working directly for Clients like John Holland , Downer EDI & Sydney Trains.

To complete Various Station Easy Access Upgrade works along with Maintenance Programs.

Our Rail Projects -

Parramatta Light Rail - Stage 1 - Infrastructure Works

Client: CPB Contractors & Downer Group Joint Venture CPBD JV

Value: -Ongoing

Scope: Ongoing

Start: Q2 2019

Project Details:

Parramatta Light Rail is one of the NSW Government's latest major infrastructure projects being delivered to serve a growing Sydney. Light rail will create new communities, connect great places and help both locals and visitors move around and explore what the region has to offer. Stage 1 will connect Westmead to Carlingford via the Parramatta CBD and Camellia with a two-way track spanning 12 kilometres, and is expected to open in 2023. The route will link Parramatta's CBD and train station to the Westmead Precinct, Parramatta North Growth Centre, the new Bankwest Stadium, the Camellia Town Centre, the new Powerhouse Museum and Riverside Theatres, the private and social housing redevelopment at Telopea, Rosehill Gardens Racecourse and three Western Sydney University campuses. By 2026, around 28,000 people will use Parramatta Light Rail every day and an estimated 130,000 people will be living within walking distance of light rail stops. In October 2017, the NSW Government announced the preferred route for Stage 2 which will connect Stage 1 and the Parramatta CBD to Ermington, Melrose Park, Wentworth Point and Sydney Olympic Park along a nine-kilometre route.



Sydney Metro - Sydenham Junction & Station Upgrade (SSJ)

Client: John holland Laing O' Rourke JV

Value: < \$1M - On-going

Scope: Site establishment services cap off responsive works permanent services

Start: Q2 2019

Project Details:

Customers at Sydenham Station will have a new air-conditioned metro train every four minutes in the peak – that's 15 trains an hour. Sydenham Station is currently serviced by 8 trains an hour in the morning peak. The station will be fully upgraded with lifts and level access between the platforms and trains. Sydenham Station platforms 1 and 2 will be upgraded to Sydney Metro standards, including the installation of platform screen doors. Existing platforms 3, 4, 5 and 6 will continue to be used by trains operating on the Sydney Trains network.



Sydney Metro - Stage 2 - City & Southwest TSE

Client: John holland CPB Ghella JV

Value: > \$5M - On-Going

Scope: site establishment de water dust suppression tunnel services pre cast facility connections Gas ,sewer, water and stormwater connection

Start: Q1 2019

Project Details: TBMs will be used to excavate 15.5 kilometres of new twin rail tunnels between Mowbray Road, Chatswood and Bedwin Road, Marrickville. Sydney Metro City & Southwest needs five TBMs. Two will be launched and removed from the Chatswood and Marrickville dives sites, with the fifth from Barangaroo.



Croydon Station Upgrade

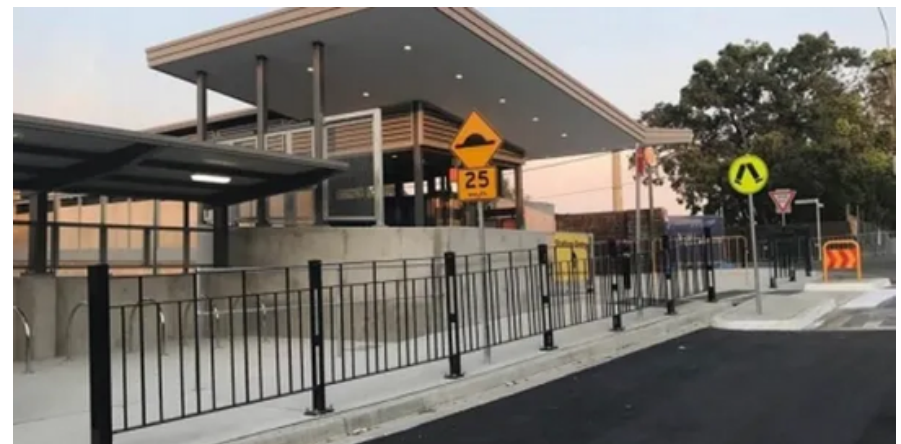
Client: John Holland Rail

Value: > \$1M

Scope: Complete storm water & Fire service new installation including new fire booster pump , new shopfront fit out and entire station plumbing upgrade. BGM Contractors worked closely with our long valued client John Holland to complete this project on time and on Budget

Start: Q1 2018

Project Details: Easy Access Upgrade to Multiple Stations



EASU Project - 4 Stations Upgrade

Client: John Holland Rail

Value: >\$1M

Scope: Complete storm water & Fire service new installation including new fire booster pump , new shopfront fit out and entire station plumbing upgrade. BGM Contractors worked closely with our long valued client John Holland to complete this project on time and on Budget

Start: Q1 2018

Project Details: Easy Access Upgrade to Multiple Stations



North Strathfield rail underpass - NSRU

Client: John Holland Bouygues Construction Australia Alliance

Value: 0.3M

Scope: Temporary & Permanent Various Hydraulics Scope

Start: Q1 2017



TFNSW - Brooklyn Railway Bridge Pipeline

Client: Transport for NSW - Sydney Trainse

Value: 0.1m

Scope: Replace 1,000m section of galvanized water line across the Brooklyn railway bridge situated on the Hawkesbury river in NSW with service points in stop bay locations in Poly

Start: Q3 2018



Coporate Governance -

At B&G Enterprises , we take our business, cultural, environmental and social responsibilitiesand obligations seriously. Our policies define our business's ethics and our procedures ensure that our behaviours and operations align with our values and ethical standards to meet andexceed the expectations of our stakeholders.

We are customer focused and we strive to surpass our client's expectations.

We are committed to consistently producing high quality products and services by ensuring our compliance with relevant Laws, Regulations, Codes of Practice and Standards and Specifications. Our systems are designed to monitor and control while operating aphilosophy of continual improvement in quality and performance.

Our focus on competency awareness and training, work health & safety and environmental and sustainability initiatives foster the development of our company values within ourorganisation.

Our Management System -

Health and Safety AS/NZ 4801

Our business depends on the occupational health and safety of our employees. Our system ensures our business practices are in compliance with legal requirements, and focuses on improving employee safety and welfare.

Quality - ISO 9001

Our management system is aimed at improving our customer satisfaction levels, and defines a proper set of procedures that ascertains whether out customer satisfaction levels are being met. We achieve this by monitoring and controlling our business processes which directly affect the quality of the products and services we provide. Our system aids in identify hazards, assessing them, and evaluating the risks. From here we are able to eliminate the risks or implement controls aimed at protecting our people and keeping our workplace a safe one.

Environmental - ISO 14001

Environmental sustainability can be challenging for any businesses. Our management system allows us to grow without harming the environment in any way. We can determine the environmental impacts our practices and processes have, and implement the necessary protection measures to reduce the effects.

B Cert certified management system AS/NZ 4801

B Cert certified management system ISO 9001

B Cert certified management system ISO 1400 1

Contractor licence #L9631

Master Plumber Association of NSW #G082

Building Code Compliance #002827

Training & Development -

The Pathway to your Trade

B&G Enterprises have formed our own dedicated training organisation to assist the tradesmen of tomorrow with their apprenticeship today "BG Training Organisation maintain a secure online induction database for all of our employees and subcontractors. Each direct and indirect employee working for BGE has their own profile to record their qualifications, licences, VOC's, SOA's and inductions

BGE employees are trained in various WH&S courses including but not limited to White Card Induction, Manual Handling, Chain of Responsibility, Drugs & Alcohol Awareness, Traffic Management Control, Confined Space, Asbestos Awareness, Working Near a Live Electrical Apparatus, Senior First Aid and Environmental Awareness. Our team also possess specific Water, Gas, Electrical, Carpentry & Building, Rail and Road qualifications..



Technology

BGM Contractors strive to give our Tier 1 Clients the best service that we can, We understand that our clients want to partner with Sub-Contractors who are driven to become industry leaders & Choose Environmentally friendly applications.

We created our **Digital Docket Application** from the ground up to Reduce our Paper usage footprint, our digital docket are crafted & sent directly from our employees mobile phones to our clients email address no matter if we are working on the surface or in Underground . Mining environments.



Design -

BGM Contractors are leaders in providing our clients with clear & Concise design use custom design software to show case to our clients our Temporary & Permanent design Proposals.

This gives our clients an idea what the outcome of each Scope of works will be.

No matter if it is a Temporary Site compound or a Permanent Mass De-Water System we will always put in the extra effort to showcase where you budget is being spent.



Health & Safety -

Safety is more than a rule –
it underpins everything we do.

Keeping our people safe is our absolute priority and the most important thing we do. Acknowledging the challenges inherent in the construction industry, the management of critical risk is one of our key strategic initiatives.

Our Safety Necessities framework provides a hierarchy of control that seeks to eliminate the risks involved in seven key areas that can cause serious injury if they are not clearly understood and managed:

- Working at heights
- Working in and around mobile plant
- Working with temporary works
- Working with live services
- Working near live traffic
- Cranes and lifting operations
- Electrical work

As a company, we will not compromise on our Safety Necessities.

Protecting Our People & Customers


Since 1969.





Since 1969.

B&G Enterprises

 **Email-**
ordersbg.net.au


 **Head Office - (B&G Enterprises)**
14 Altair Place Jamisontown NSW 2750


 **Websites-**
bgenterprises.com.au

BGM Contractors

 **Email-**
admin@bgmcontractors.com.au

 **Sydney Office - (BGM Contractors)**
3/55 Pyrmont Bridge Road ,Pyrmont NSW ,2009

 **Websites-**
bgmcontractors.com.au

 **Phone-** (02) 47 318 200