

VARIETY:



Crabapple - Coralburst



SIZE:

H 15' x W 15'

BOTANICAL NAME:

Malus

COMMON NAME:

Flowering Crabapple

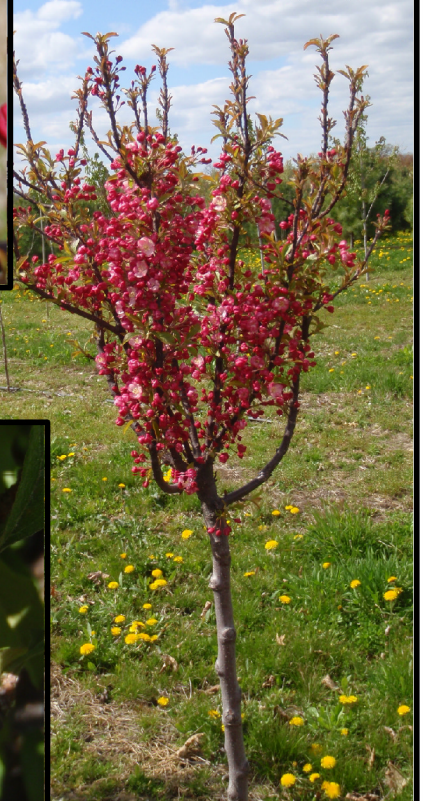
ITEM#

ma co

Pronunciation: MAY-lus



SPRING - FLOWER



LEAF COLOR: Dainty small dark green foliage.

HABIT: Dainty, dwarf type forming a rounded, bushy head.

CULTURE: Generally crabapples require little pruning, but if an is done, it should be completed before early June. Most crabapples initiate flower buds for the next season in mid-june to early july and pruning at this time will result in decreased flower production the following year. Pruning off suckers is a good idea anytime of year. Performs best in full sun for blooms.

FLOWER: Coral pink buds open to double rose pink flowers.

FRUIT: Few, 1/2" diamete, bronze, reddish orange.



FRUIT

Photos by: Kim Fird



BALDWIN TREE FARM

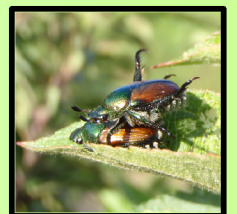
2232 BALDWIN RD. | FENTON, MI 48430

PH: 248-640-4510

iPhone PH: 248-437-5855

email: info@baldwintreefarm.com

Japanese Beetle
can be a pest



JAN. 2012