

## SATELLITE ART SHOWS

(by Charlotte White, Chairperson)

If artists have sales at the various Satellite Art Shows, please tell Charlotte so she can include that information in the newsletter. Thank you.

**VOLUNTEERS NEEDED:** We need some volunteer coordinators to help at the various locations. Could you volunteer once a month? Please call Charlotte White at (661) 330-2676. Thank you.

**AltaOne Federal Credit Union**, 11211 River Run Blvd. (off Buena Vista). **Kellie Haskill** will exhibit July through September. To exhibit sign up in the notebook. Micki Schulz, Coordinator, 330-3002 (30% commission to BAA. AOFUCU is donating their 15% to the BAA.)

**AltaOne Federal Credit Union**, 6501 Ming Ave. (Corner of Ashe). **Richard Hoffer** will exhibit July through September. **Wendy Johnson** will exhibit October through December. To exhibit sign up in the notebook. Jan Wiley, Coordinator, 805-405-5799. (30% commission to BAA. (AOFUCU is donating their 15% to the BAA.)

**Bakersfield Chamber of Commerce**, board room, on the corner of 18th and Eye Street. **Lisa Faulkenberry & Jim Bates** will exhibit July through September. **Karen Schuett & Chrissy Rogers** will exhibit October through December. To exhibit sign up in notebook or contact Vicki Meadows, Coordinator, 747-6143. (Commission: 15% to B. C. of C. and 15% to BAA).

**Covenant Coffee Shop**, 11700 N. Chester. **Jim Bates** will exhibit July through August. **Vicki Meadows** will exhibit September through October. To exhibit contact: Kay Hall, Coordinator at 324-0311. (Commission: 20% to C.C. and 10% to BAA).

**Dagny's Coffee Shop**, 1600 20th Street. **Kellie Haskill** will exhibit in August and **Marilyn Smith** will exhibit in September. To exhibit contact: Mimi Placencia, Coordinator, 444-0186. (Commission: 20% to DCS and 10% to BAA).

**Guild House**, 1905 19h Street. **Closed for the summer.** **Vickie Meadows and Roline Loung** will exhibit September through December. If you want to exhibit, sign up in the notebook. Charlotte White, Coordinator, 330-2676. 30% commission (20% to G.H. and 10% to BAA)

**Houchin Community Blood Bank**, 11515 Bolthouse Drive. **Chrissy Rogers** will exhibit June through August. **Vicki Meadows** will exhibit September through November. To exhibit sign up in the notebook. Charlotte White, Coordinator, 330-2676. (Commission: 30% to BAA).

**Kern Community Foundation**, 5701 Truxtun Avenue, Suite 110. **Vicki Meadows is the only artist that will be exhibiting at the KCF.** Vicki Meadows, Coordinator. To exhibit sign up in the notebook. (Commission: 30% to BAA).

**Kern Literacy Council**, 331 Eighteenth Street. **Lisa Faulkenberry** will exhibit June through August and **Wendy Johnson** will exhibit September through November. To exhibit sign up in the notebook. Charlotte White, Coordinator, 330-2676. (Commission: 15% to K.L.C. and 15% to BAA).

**Lorene's Ranch Restaurant**, 1531 23rd St. **Vicki Meadows** will exhibit July through September and **Lisa Faulkenberry** will exhibit October through December. To exhibit sign up in the notebook. Charlotte White, Coordinator, 330-2676. (Commission: 15% to LRR. and 15% to BAA).

**Modern Aesthetic Institute, Dr. Joseph Chang**, 4000 Empire Drive. **Charlotte White** will exhibit July through September and **Roline Loung** will exhibit October through December. **Micki Schulz**, Coordinator, 330-3002. (Commission: 30%, 30% to BAA, M.A.I. is donating their 15%)

**River Run RV Park**, 3715 Burr Street. **Lisa Faulkenberry** will exhibit July through September **Roline Loung** will exhibit October through December. **Jim Bates** has a semi-permanent exhibit. To exhibit sign up in the notebook. Iva Fendrick, Coordinator, 303-5327. (15% Commission to RR RV Park, 15% to BAA.)

**Shafter Library**, 236 James Street, Shafter. **Vicki Meadows** will exhibit June through August and **Janeen Smith** will exhibit September through November. **Charlotte White**, Coordinator, 330-2676. (Commission: 15% S.L., 15% BAA).

(Cont. on Page 7)

(Cont. from Page 6)

**Tina Marie's Restaurant**, 1534 19<sup>th</sup> Street. Open 6 a.m. to 2:00 p.m. **Vicki Meadows** will exhibit July through September and **Lisa Faulkenberry** will exhibit October through December. To exhibit sign up in the notebook. **Charlotte White**, Coordinator, 330-2676. (Commission: 30%, 30% to BAA, T.M. is donating their 15%)

**Toss It Salad Bar**, 191 Eye Street. **Kellie Haskill** will exhibit August through October and **Micki Schulz** will exhibit November through January. To exhibit sign up in the notebook. **Charlotte White**, Coordinator, 330-2676. (Commission: 30%. 15% to TISB and 15% to BAA.)

**Epic Jet Center/ BAA Art Gallery**, 1105 Douglas. Group Show: **Iva Fendrick, Ann Sullivan, Patti Doolittle, and Charlotte White**. This is a semi-permanent exhibit, there will be no changes. **Iva Fendrick and Charlotte White**, Co-Coordinators. Commission: 30% to BAA.

## STUDENT ART SHOW FOR AUGUST

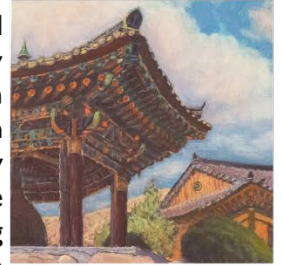
This summer, Golden Valley High School and Highland High School's Summer Schools will be showcasing their artwork from in August at the Bakersfield Art Association Art Center. This event promises to be an eclectic celebration of diverse creative expressions from talented students. The spotlight will be on the exceptional artwork crafted by students from Ms. Suender's and Mrs. Mayo's Beginning Art classes and Advanced classes.

We cordially invite you to join us for the opening reception on August 2nd from 6-8 p.m. It's a wonderful opportunity to immerse yourself in the artistic achievements of our students and celebrate the vibrant tapestry of creativity within our school community.

**Lisa Mayo** (Art Teacher/HHS VAPA Department Chair)  
**Academic Decathlon Advisor/Art Club Advisor/Newspaper Advisor**  
**Highland High School**

## BAA MEMBER, DAVID GORDON

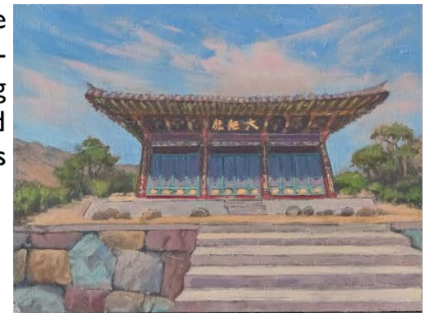
David Gordon had three plein air oil paintings in the Tehachapi Arts Commission art show July 19 through 21. A member of the BAA, he is a third generation Kern County native with a bachelor's in art and applied design from San Diego State University and a master's in landscape architecture and painting from North Carolina State University.



Besides twenty-five years of landscape design, Gordon has been the assistant director of the Bakersfield Museum of Art followed by being the Executive Director of the Arts Council of Kern where he began the Kern County Plein Air Festival.

He is currently the managing partner of Bird Dog Arts at the Outlets at Tejon.

Gordon specializes in local landscape paintings depicting the gritty that is the San Joaquin Valley often adding brightness and drama to his pieces.



**TONI LOTT**  
 ART INSTRUCTOR  
 colormixer72@gmail.com  
**661-205-3488**  
 2250 R Street code 0122