

GAF

We
protect
what
matters
most™

Accelerating Your Digital Journey

Geoffrey Jackson
March, 2023

GAF

We Are GAF



GAF is part of the largest roofing and waterproofing business in the world



GAF research and development is leading the industry forward in new and exciting ways



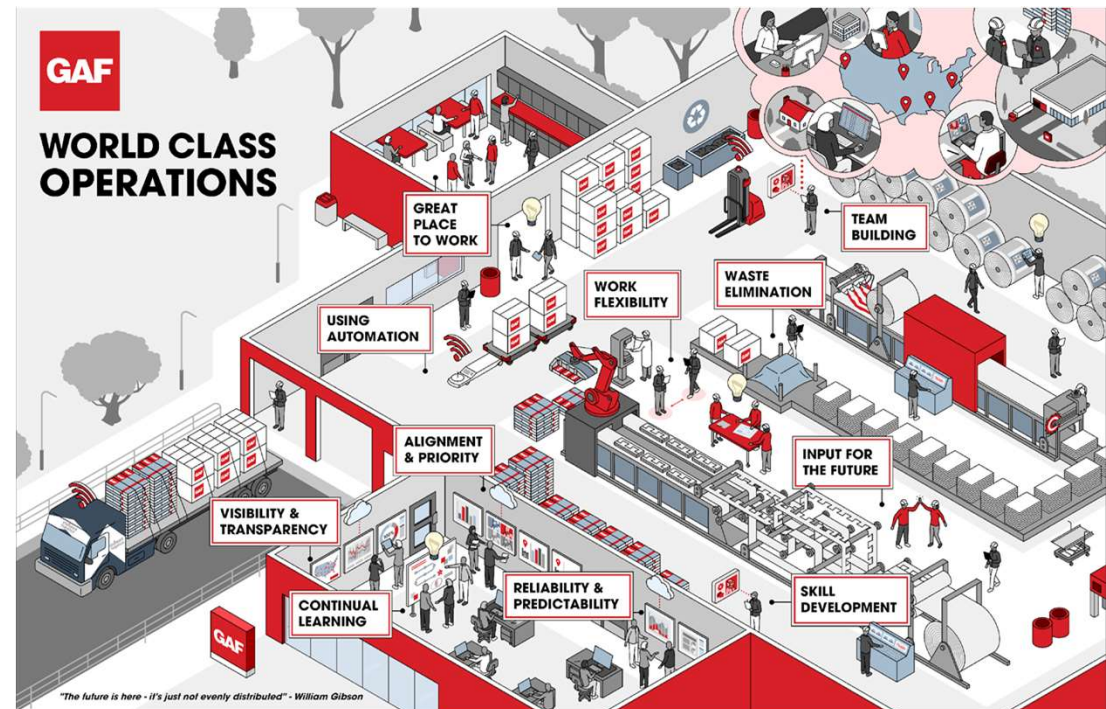
We are committed to strengthening the communities where we live and work



GAF is proud to promote sustainability in all areas of our business

GAF Agenda

- Our Approach
- Digital Thread
- People, Process, Technology
- Automation
- Countdown to the Future
- Accelerate the Adoption



GAF Setting the Stage

2017

2020

2022

Future

Build Strategy

Industry 4.0 tools
Digital Thread
Multi-generational approach

Execute Plan

Infrastructure
Workforce planning
Digitize and connect
Demonstrate value

Operationalization

Incorporate tools into daily life
Analyze and visualize
Adjust strategy and vision
Focus on user experience
Automate 3D Tasks

Predict and Prescribe

Build models for prediction
Incorporate new visualization tools (AR/ VR)



Multiple Product Generations to Achieve Goal

Generation 1

**Connect and Analyze Data/
Data visibility to all**

Generation 2

**Automate Inventory/
Make Inventory Visible
Near Real Time**

Generation 3

**Machine Learning/
Entire Process Visible**

Multiple Product Generations to Achieve Goal

Generation 1

Generation 2

Generation 3

Connect and Analyze Data/ Data visibility to all

- All critical to business apps are connected and accessible through a single, mobile user interface
- Routine business tasks are automated and managed by exception in multiple areas
- Standardize and connect data between plants for analytics and visibility
- Build roadmap for skills and competencies evolution.

Automate Inventory/ Make Inventory Visible Near Real Time

Machine Learning/ Entire Process Visible

Multiple Product Generations to Achieve Goal

Generation 1

Connect and Analyze Data/ Data visibility to all

- All critical to business apps are connected and accessible through a single, mobile user interface
- Routine business tasks are automated and managed by exception in multiple areas
- Standardize and connect data between plants for analytics and visibility
- Build roadmap for skills and competencies evolution.

Generation 2

Automate Inventory/ Make Inventory Visible Near Real Time

- Real time raw material consumption in select plants
- Automated cycle counting at reduced frequency based on raw material consumption
- Automated production processes where it makes sense
- Business rules between systems automated and managed by exception

Generation 3

Machine Learning/ Entire Process Visible

Multiple Product Generations to Achieve Goal

Generation 1

Connect and Analyze Data/ Data visibility to all

- All critical to business apps are connected and accessible through a single, mobile user interface
- Routine business tasks are automated and managed by exception in multiple areas
- Standardize and connect data between plants for analytics and visibility
- Build roadmap for skills and competencies evolution.

Generation 2

Automate Inventory/ Make Inventory Visible Near Real Time

- Real time raw material consumption in select plants
- Automated cycle counting at reduced frequency based on raw material consumption
- Automated production processes where it makes sense
- Business rules between systems automated and managed by exception

Generation 3

Machine Learning/ Entire Process Visible

- Fully integrated data with all functions to make strategic decisions
- Real time inventory consumption in all plants
- Machine automation of routine tasks
- Use of VR/ AR and other electronic resources for troubleshooting, training, and other use cases

The Digital Thread



Product identification
created which ties all
relevant information
together

Product Health

Determined by visual inspections and testing, conformance to finished good specifications

Process Health

Process setpoints and actual values

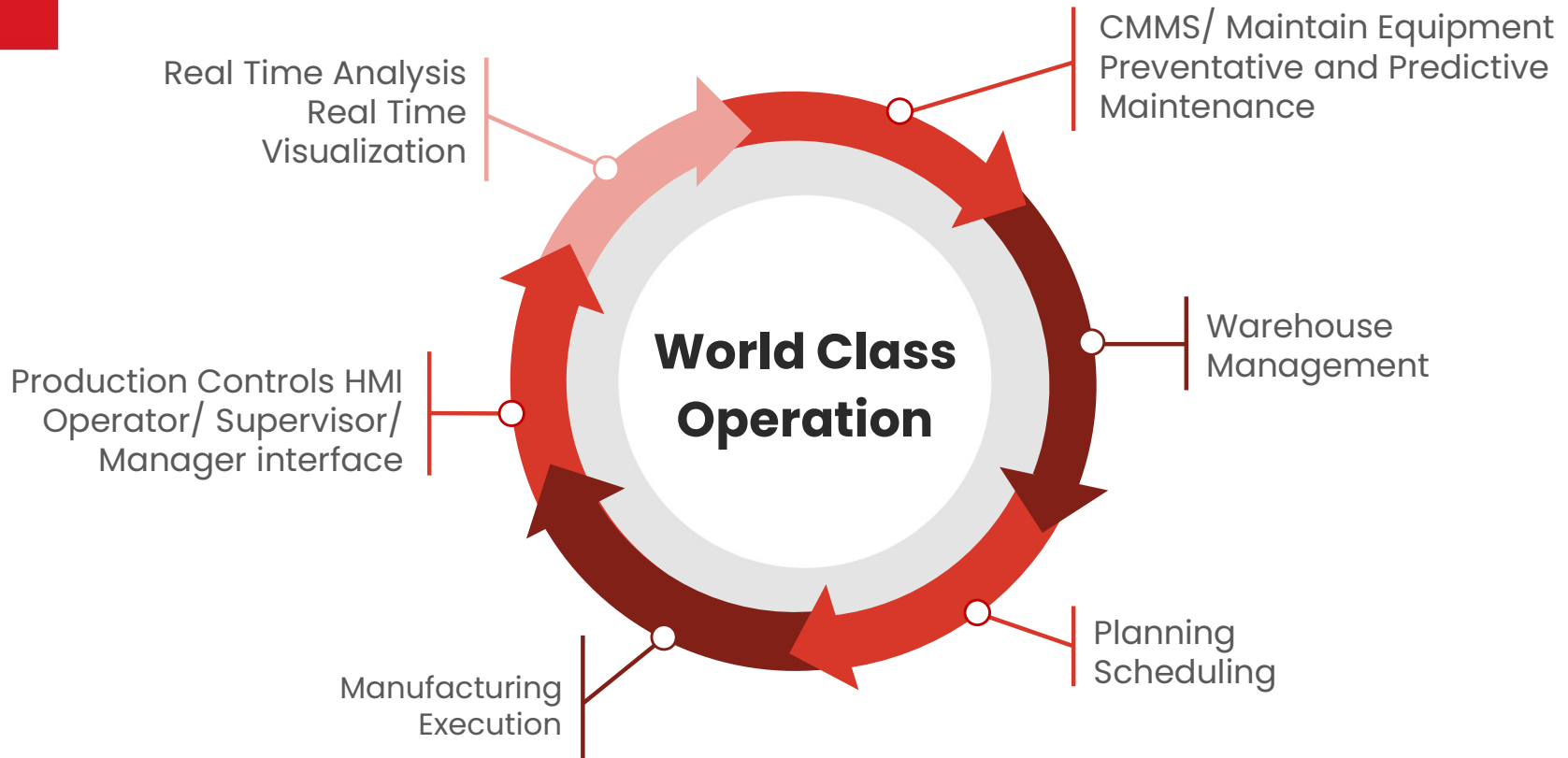
Machine Health

Drive/ motor conditions, condition-based monitoring, lifecycle management, utility (compressed air, colling, HTM, etc.) information

Material Health

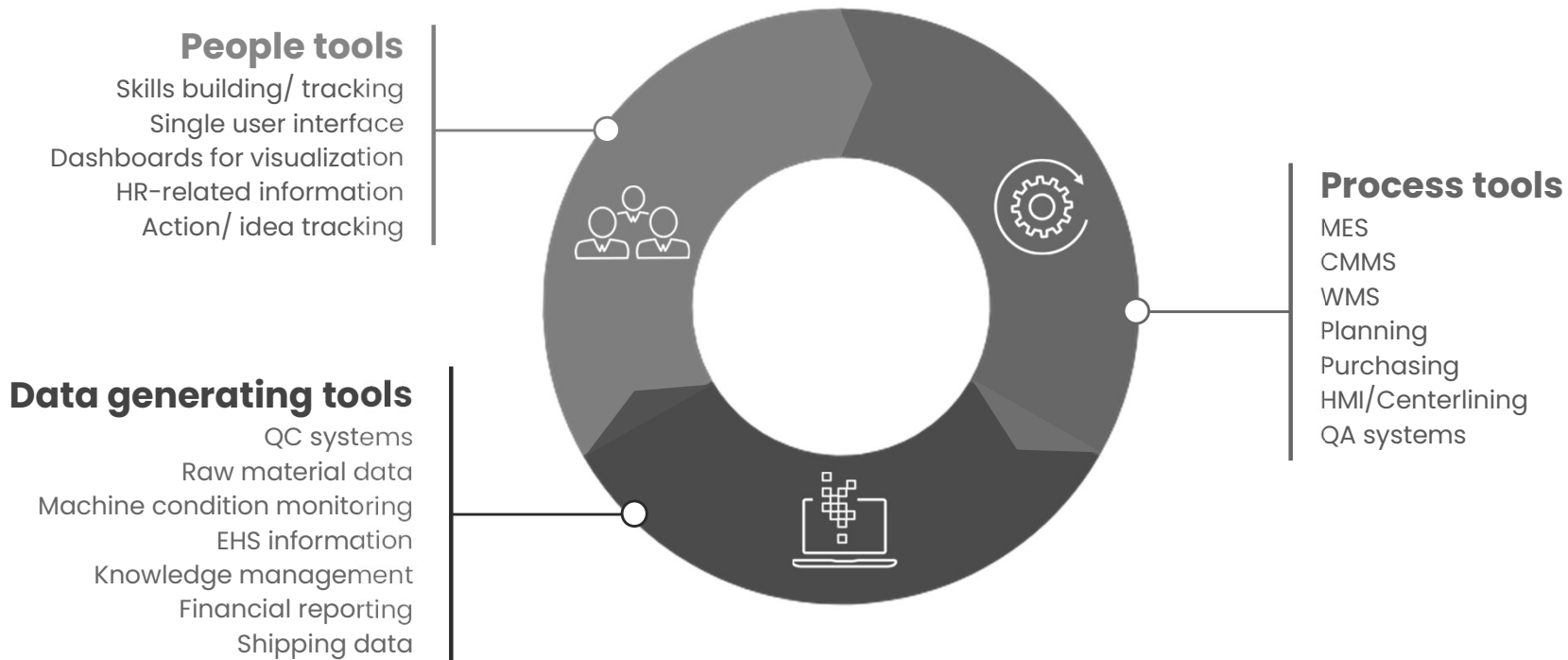
Captures conformance to RM specifications, storage, handling and usage, physical properties, CofAs, receiving information, usage

When raw material and process traceability extends beyond the receiving dock and through to the end user, issues can be easily identified and properly analyzed using all data.



Building World-Class Operations

Our framework for innovation, sustainment and continuous improvement



How the Apps Match the Digital Thread

Product Health

Quality testing
Inventory levels and location
Life-cycle management

Raw Material Health

Incoming quality testing
Inventory levels and location

Process Health

Planning/scheduling
Manufacturing
Shipping

Machine Health

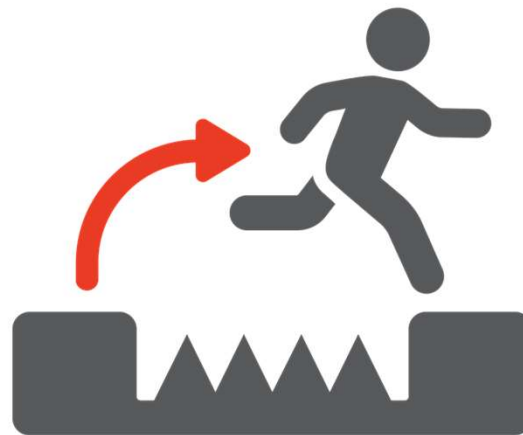
Condition-based monitoring

Automate to Eliminate 3D Tasks

What is a 3D Task? Any task that is:



Dull



Dangerous



Dirty

Countdown to Factory of the Future

We want people to.....

**Know the
*4 Healths***

Process
Product
Material
Machine

**Be free from the
*3D tasks***

Dull
Dirty Dangerous

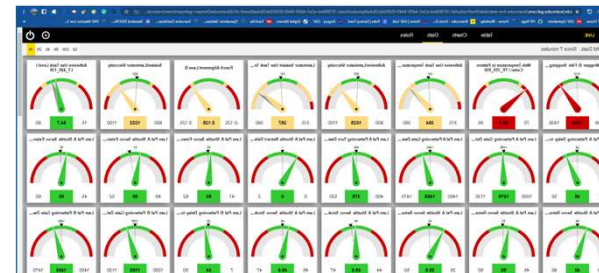
**Use the
*2 Models***

Predictive and
Prescriptive

**Enjoy
the
1 Factory
of the
Future**

Where Does BrainCube Fit in the Stack?

- **Process Health-** Hyperlift capability with cross-rank and correlation capability
- **Centerlining-** BrainCube Live used for workstation display of critical process parameters including both direct and calculated variables
- **Process Dashboarding-** Consolidating data from multiple sources to create a single pane of glass for operators, supervisors, engineers, and managers



Accelerating Adoption

- **Rules before Tools:** Critical that processes (transactional and physical) are standard, reliable, and meet the needs of the business.

Accelerating Adoption

- **Rules before Tools:** Critical that processes (transactional and physical) are standard, reliable, and meet the needs of the business.
- **Human and Digital Infrastructure** requirements should be understood and designed to handle future data requirements including headcount to operationalize and analyze

Accelerating Adoption

- **Rules before Tools:** Critical that processes (transactional and physical) are standard, reliable, and meet the needs of the business.
- **Human and Digital Infrastructure** requirements should be understood and designed to handle future data requirements including headcount to operationalize and analyze
- **Priority conflicts** will exist between run the business and technology exploration. Innovation and new tools must be part of running the business, not in competition

Accelerating Adoption

- **Rules before Tools:** Critical that processes (transactional and physical) are standard, reliable, and meet the needs of the business.
- **Human and Digital Infrastructure** requirements should be understood and designed to handle future data requirements including headcount to operationalize and analyze
- **Priority conflicts** will exist between run the business and technology exploration. Innovation and new tools must be part of running the business, not in competition
- **Cultural Shift to Digital Mindset** from traditional operational philosophy. Change from **Who** to **Where** data exists and **How** to use it to solve problems

Accelerating Adoption

- ***Eliminate the Crutch***– There comes a time when the old tools/ processes need to be turned off to insure adoption of the new.

Accelerating Adoption

- ***Eliminate the Crutch***– There comes a time when the old tools/ processes need to be turned off to insure adoption of the new.
- ***Deploy with the Right Expectations***– The users should know if the application is being launched as an MVP with rapid iterations planned or as a stable product with a longer term roadmap for feature enhancement

Accelerating Adoption

- ***Eliminate the Crutch***– There comes a time when the old tools/ processes need to be turned off to insure adoption of the new.
- ***Deploy with the Right Expectations***– The users should know if the application is being launched as an MVP with rapid iterations planned or as a stable product with a longer term roadmap for feature enhancement
- ***Change Management Plan***– Multi-channel plan which includes hypercare services and a feedback mechanism. When feasible, add environments for feature testing and experimentation

Accelerating Adoption

- **Eliminate the Crutch**– There comes a time when the old tools/ processes need to be turned off to insure adoption of the new.
- **Deploy with the Right Expectations**– The users should know if the application is being launched as an MVP with rapid iterations planned or as a stable product with a longer term roadmap for feature enhancement
- **Change Management Plan**– Multi-channel plan which includes hypercare services and a feedback mechanism. When feasible, add environments for feature testing and experimentation
- **Know the Digital Maturity**– Not every organization or facility is at the same digital maturity level. It is important to consider the experience and comfort with digital tools in general when selecting sites for deployment.

GAF

We
protect
what
matters
most™

Thank you

Questions?



GAF OPERATIONS





GAF

WORLD CLASS OPERATIONS

GREAT PLACE TO WORK

TEAM BUILDING

USING AUTOMATION

WORK FLEXIBILITY

WASTE ELIMINATION

ALIGNMENT & PRIORITY

INPUT FOR THE FUTURE

VISIBILITY & TRANSPARENCY

RELIABILITY & PREDICTABILITY

SKILL DEVELOPMENT

CONTINUAL LEARNING

"The future is here - it's just not evenly distributed" - William Gibson

