

Attention!!

Repair tips for successful replacement of your LCD/Digitizer assembly.

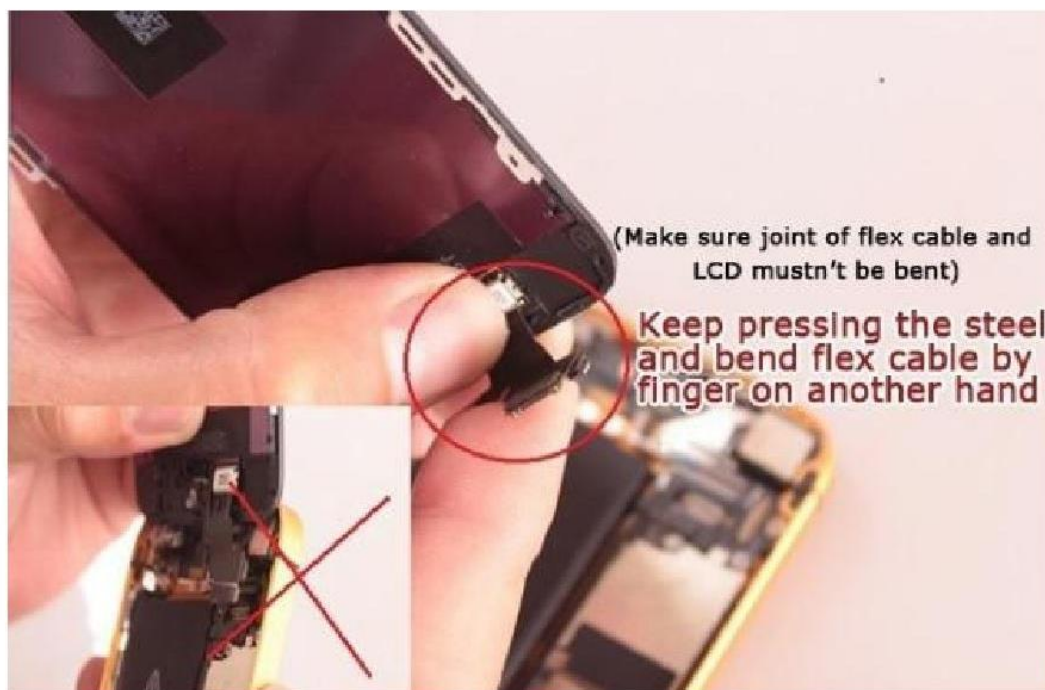
Make sure device is powered off before opening

Disconnect battery connector



During installation of the assembly, please press the steel first, and then bend the flex cable, as shown

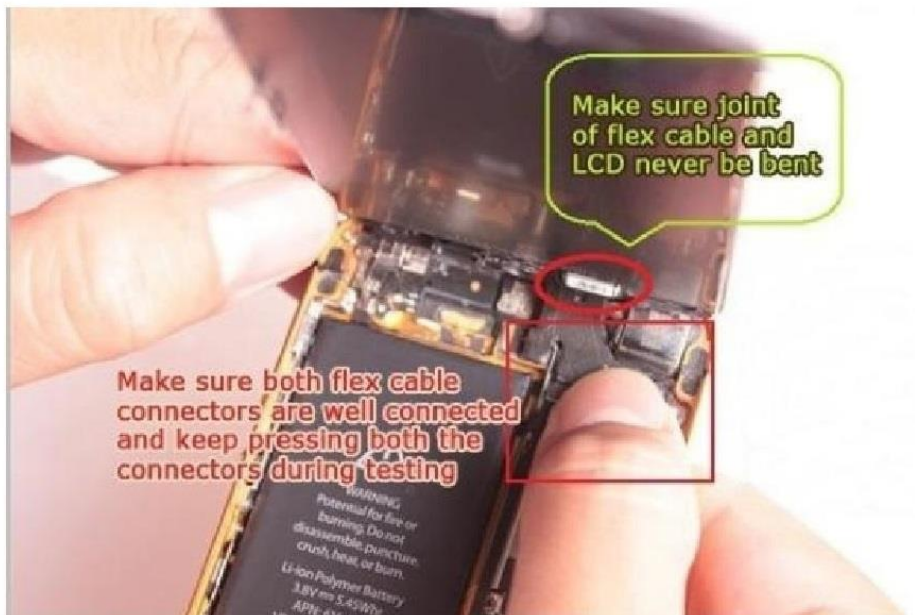
Please make sure both flex cables are secured correctly and tightly.





Keep holding the connectors tightly and position the assembly at a 45 to 60degree angle...for testing.





Reconnect The Battery and power on the phone

Place your finger on any icon, when they start to wiggle, keep your finger on the icon and move it all around the screen. If the assembly has dead spots, the icon will slip off your finger. If there are no dead spots, the icon will remain on your finger.



If the steel plate was not pressed and held during installation, the LCD may be black, show white lines or jump around making it impossible to use.

REMEMBER, PLEASE PRESS ON THE METAL PLATE, THEN BEND THE FLEX CABLES AND PRESS THEM FIRMLY INTO PLACE ON BOARD CONNECTORS DURING INSTALLATION!

Make sure to replace the Flex- plate- shield screws in the location they were taken from. Failure to follow this little tip will cause "Blue Screen" and damage your logic board.