

GLAM SOCIETY



# THE HOLY DOLL BIBLE



The ultimate guide to luxury extensions, alt-glam transformations & becoming **THAT** doll.



THIS ISN'T BASIC BEAUTY.

AND THIS **DEFINITELY** ISN'T HAIR THAT BLENDS INTO THE BACKGROUND.

DARK DOLLZ GLAM SOCIETY IS WHERE LUXURY MEETS EDGE, **GLAM GETS LOUDER** & YOU WALK OUT AS THE UNAPOLOGETIC VERSION OF YOU THAT THE WORLD DESERVES TO SEE!

# BEYOND BASIC. BUILT FOR BOLD BADDIES.

DARK DOLLZ WAS CREATED FOR ALL BEAUTY NOT JUST WHAT IS CONSIDERED "CLASSIC BEAUTY STANDARDS". **WE ARE HERE TO BREAK THAT MOULD!**

WE CUSTOM FIT EVERY TRANSFORMATION TO YOU BASED ON:

- YOUR LIFESTYLE - THIS IS HUGELY IMPORTANT FOR YOUR DAY TO DAY
- YOUR PERSONAL STYLE - BECAUSE ALL BEAUTY STYLES ARE DIFFERENT
- YOUR DESIRED END RESULT - INSPO OR GOALS THAT YOUR DYING FOR
- **MOST IMPORTANTLY** HOW YOU WANT TO FEEL WALKING OUT!

[CLICK TO VIEW  
TRANSFORMATIONS](#)

THIS GUIDE WAS CREATED TO HELP YOU:

- UNDERSTAND YOUR PERFECT EXTENSION MATCH
- AVOID THE MISTAKES RUINING YOUR HAIR
- DISCOVER WHAT KIND OF DOLL YOU ARE
- UNLOCK LUXURY HAIRCARE SECRETS
- BOOK YOUR TRANSFORMATION WITH CONFIDENCE



SO DOLL...

# WELCOME TO THE DARK SIDE...

# FIND YOUR INNER DARK DOLL



USE THIS EGUIDE TO UNLEASH YOUR INNER  
DARK DOLL.

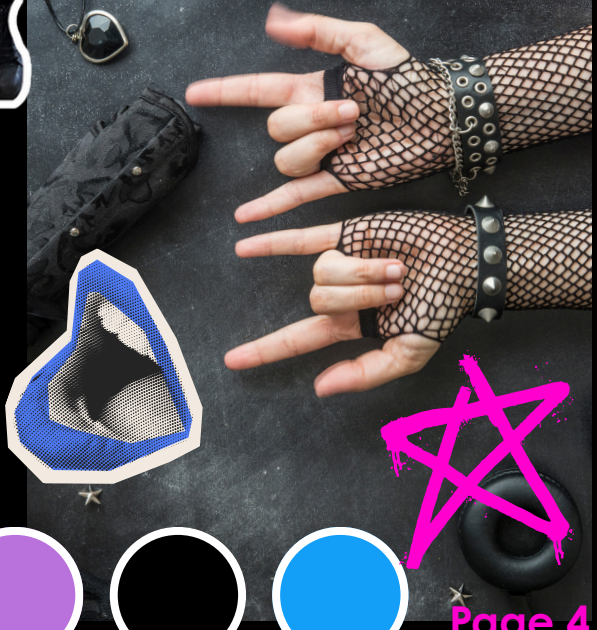
- FIND ALT GLAM INSPO
- LEARN THE MUST HAVES & ABSOLUTELY **DO NOTS**
- TAKE YOUR PERFECT DOLL MATCH QUIZ
- FIND YOUR ULTIMATE HAIR EXTENSION STYLE

**JOIN THE SOCIETY**

INSTAGRAM CHANNEL

# YOUR ULTIMATE ALT-GLAM GUIDE

**DARK DOLLZ**  
GLAM SOCIETY



# 7 DEADLY EXTENSION SINS

1. SLEEPING WITH WET HAIR
2. CHEAP HAIR PRODUCTS
3. PURPLE SHAMPOO OVERUSE
4. SKIPPING MAINTENANCE
5. HEAT WITHOUT PROTECTION
6. BRUSHING INCORRECTLY
7. DIY REMOVAL = DISASTER!!!



**DON'T FALL INTO THESE TRAPS**

# THE HOLY GRAIL PRODUCTS

- EXTENSION SAFE SHAMPOO
- EXTENSION SAFE CONDITIONER
- EXTENSION HYDRATION MASK
- ARGAN OIL
- DETANGLER BRUSH
- HEAT PROTECTANT



[CLICK TO VIEW PRODUCTS](#)

# WHY THESE ARE YOUR HAIR'S "FOUNTAIN OF YOUTH"

## SHAMPOO

### WHY YOU NEED IT:

Not all shampoos are extension safe and using the wrong one can dry your hair out FAST. Many supermarket shampoos contain harsh ingredients.

### AVOID:

Parabens, Sulphates, Keratin, & Proteins. This leaves extensions feeling:

- dry
- frizzy
- tangled
- brittle

An extension-safe shampoo gently cleans the hair without damaging the extension bonds or over-drying the lengths.

### DOLL TIP:

The healthier your shampoo routine, the longer your extensions stay looking luxury instead of worn out.

## CONDITIONER

### WHY YOU NEED IT:

Extensions NEED moisture to stay soft & manageable. Because extension hair isn't attached to your natural scalp oils, conditioner helps replace the hydration your hair would normally receive naturally.

Without proper conditioning, extensions can become:

- rough
- knotty
- frizzy
- hard to style

A high-quality extension conditioner helps smooth the hair cuticle, reduce tangling & keep your lengths looking glossy and healthy.

### DOLL TIP:

Always focus conditioner through mids & ends where extensions need hydration the most.

## HYDRATION MASK

### WHY YOU NEED IT:

A hair mask is like a recovery treatment for your extensions. Heat styling, weather, bleaching & daily wear slowly pull moisture out of the hair over time.

A hydrating mask deeply replenishes that lost moisture before dryness turns into damage.

This is especially important for:

- blondes
- long extensions
- high-glam styling
- coloured hair

### DOLL TIP:

Using a hydrating mask weekly helps keep your extensions looking expensive, healthy & photo-ready.

## ARGAN OIL

### WHY YOU NEED IT:

Argan oil is one of the easiest ways to instantly make extensions look healthier.

It helps smooth frizz, add shine & lock moisture into the hair especially through dry ends.

Extensions naturally lose hydration faster than natural hair, so lightweight oils help maintain that silky luxury finish between washes.

### DOLL TIP:

A small amount goes a long way. Focus on mids & ends only. NEVER directly on extension attachment areas.

## DETANGLER BRUSH

### WHY YOU NEED IT:

Regular brushes can pull, snag & damage extensions if they're too harsh.

A detangler brush is designed to gently glide through the hair without excessive tension, helping reduce:

- breakage
- matting
- shedding
- pulling on extension rows

Brushing properly is one of the biggest factors in keeping extensions healthy long term.

### DOLL TIP:

Brush your hair daily! ESPECIALLY before showering, sleeping & washing to prevent tangles from becoming matting.

## HEAT PROTECTANT

### WHY YOU NEED IT:

Heat damage is one of the fastest ways to ruin extensions. Straighteners, curling tools & blow dryers strip moisture from the hair every single time they're used.

Without protection, extensions become:

- dry
- brittle
- frayed
- dull

A heat protectant creates a barrier between your hair & styling tools to help minimise damage while keeping the hair smoother & healthier.

### DOLL TIP:

If you use heat styling (even occasionally) heat protectant isn't optional. **IT'S ESSENTIAL!**

# DAILY DOLL CHECKLIST



**YOUR NON-NEGOTIABLE DAILY ROUTINE FOR HEALTHY LUXURY HAIR**  
...BECAUSE THE DOLLS WITH THE BEST HAIR ARE THE DOLLS WITH THE BEST ROUTINES.

USE THIS CHECKLIST TO KEEP YOUR EXTENSIONS:

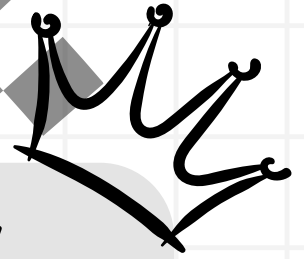
- ✓ SOFT
- ✓ SILKY
- ✓ HEALTHY
- ✓ TANGLE-FREE
- ✓ LUXURY LOOKING FOR LONGER

- Brush extensions morning + night
- Apply argan oil through mid-lengths & ends
- Avoid sleeping with wet hair
- Use heat protectant before styling
- Secure hair before sleeping
- Keep extension rows clean & dry
- Avoid excessive heat styling
- Use extension-safe products only
- Protect hair while exercising/swimming
- Rock that style with CONFIDENCE!!

## DOLL TIP:

Consistency is what keeps extensions looking expensive, it's not just the install itself.

# THE LUXURY HAIR SCHEDULE



## WASH DAYS

### (1-2X WEEKLY)

- ✓ Extension-safe shampoo
- ✓ Extension conditioner
- ✓ Gentle towel drying
- ✓ Heat protectant before styling
- ✓ Fully dry extension rows

## DAILY

- ✓ Gentle brushing
- ✓ Argan oil on ends
- ✓ Protect hair while sleeping

## WEEKLY

- ✓ Hydrating hair mask
- ✓ Deep detangle session
- ✓ Clean brushes/tools
- ✓ Scalp & row check

## EVERY 4-8 WEEKS

- ✓ Maintenance appointment
- ✓ Move-ups/refits
- ✓ Colour refresh if needed
- ✓ Professional trim if recommended



### DOLL TIP:

Overwashing extensions can dry them out faster. Your hair thrives the best with balance not over-processing.

NOT EVERY EXTENSION METHOD SUITS EVERY DOLL.  
YOUR LIFESTYLE, STYLING HABITS, MAINTENANCE COMMITMENT & DREAM AESTHETIC  
ALL MATTER WHEN CREATING FLAWLESS LUXURY HAIR.



# FIND YOUR PERFECT DOLL MATCH

TAKE THE MINI DOLL MATCH QUIZ BELOW TO  
DISCOVER YOUR PERFECT DOLL ENERGY.

## QUESTION 1 - LIFESTYLE

### WHAT TYPE OF DOLL ARE YOU?



- A. LOW MAINTENANCE BUT STILL GLAM
- B. BUSY BABE ALWAYS ON THE GO
- C. CONTENT CREATOR / PHOTOSHOOT ENERGY
- D. FULL GLAM ALMOST EVERY DAY

## QUESTION 2- STYLING FREQUENCY

### HOW OFTEN DO YOU STYLE YOUR HAIR?



- A. ALMOST NEVER
- B. 1-2 TIMES WEEKLY
- C. MOST DAYS
- D. I LIVE WITH HOT TOOLS IN MY HAND



### QUESTION 3 - DREAM HAIR GOALS

#### PICK YOUR DOLL ERA

- A. SOFT GLAM DOLL - Natural luxury. Soft blends. Effortless beauty.
- B. ROCKSTAR DOLL - TEXTURED LAYERS ALT EDGE. STATEMENT HAIR.
- C. BRATZ DOLL - Big volume. Long lengths. Full glam energy.
- D. PLATINUM BOMBSHELL - Bright blonde. High maintenance. Maximum impact.



### QUESTION 4 - MAINTENANCE LEVEL

#### HOW COMMITTED ARE YOU TO YOUR HAIR ROUTINE?

- A. MINIMAL EFFORT PLEASE
- B. I'LL DO THE BASICES PROPERLY
- C. I LOVE HAIR CARE RITUALS
- D. LUXURY MAINTENANCE DOESN'T SCARE ME



### QUESTION 5 - BUDGET RANGE

#### YOUR GLAM INVESTMENT LEVEL

- A. ENTRY LEVEL LUXURY
- B. MID-RANGE GLAM
- C. FULL TRANSFORMATION ENERGY
- D. I WANT THE **BEST** POSSIBLE RESULT



**RESULTS**





# THE RESULTS



COUNT YOUR QUIZ ANSWERS &  
CHECK YOUR RESULTS PAGE FOR  
YOUR PERFECT DOLL MATCH

[CLICK HERE TO BOOK YOUR  
TRANSFORMATION](#)

YOU'RE THE KIND OF DOLL WHO MAKES BEAUTY LOOK EASY.  
SOFT GLAM. CLEAN BLENDS. LUXURY WITHOUT TRYING TOO HARD.

- NATURAL
- WEARABLE
- LOW STRESS
- EFFORTLESSLY EXPENSIVE

YOU'RE NOT CHASING HIGH-MAINTENANCE CHAOS .

**YOUR PERFECT MATCH:** NATURAL LUXURY WEFTS

**PERFECT FOR:**

- ✓ SOFT FULLNESS
- ✓ EVERYDAY GLAM
- ✓ SEAMLESS BLENDS
- ✓ LIGHTWEIGHT LUXURY
- ✓ EASY STYLING ROUTINES

**MOSTLY A's**

**“THE EFFORTLESS  
DOLL”**

**RECOMMENDED FOR YOU:**

- 18–22 INCH LENGTHS
- SOFT GLAM STYLING
- NATURAL DENSITY INSTALLS
- LOW-MAINTENANCE LUXURY.

**YOUR DOLL ENERGY:**

QUIET LUXURY WITH EFFORTLESS GLAM



YOU WEREN'T MADE FOR BORING HAIR.

YOUR VIBE IS BOLD, EDGY, CREATIVE & COMPLETELY UNFORGETTABLE.

- CONTRAST
- TEXTURE
- ALTERNATIVE GLAM
- COOL-GIRL ENERGY
- LOOKS THAT STAND OUT

YOU DON'T WANT THE SAME HAIR AS EVERYONE ELSE.

**YOUR PERFECT MATCH:** CUSTOM ALT-GLAM WEFTS

**PERFECT FOR:**

- ✓ LAYERED STYLES
- ✓ STATEMENT COLOUR PLACEMENT
- ✓ BOLD TRANSFORMATIONS
- ✓ TEXTURED GLAM
- ✓ ALTERNATIVE AESTHETICS



**MOSTLY B's**

**“THE ALT GLAM DOLL”**

**RECOMMENDED FOR YOU:**

- CUSTOMISED COLOUR PLACEMENT
- DIMENSIONAL TONES
- TEXTURED FINISHES
- MEDIUM-LONG GLAM LENGTHS

**YOUR DOLL ENERGY:**

BOLD. UNAPOLOGETIC. ICONIC.

# MOSTLY C's

## “THE BRATZ DOLL”

MAIN CHARACTER ENERGY ONLY.

- BIG GLAM
- DRAMATIC LENGTHS
- FULL VOLUME
- FLAWLESS STYLING
- UNAPOLOGETIC CONFIDENCE

SUBTLE? NEVER HEARD OF HER.

YOU WANT HAIR THAT TURNS HEADS THE SECOND YOU WALK INTO A ROOM.

THE BIGGER, LONGER & GLOSSIER — THE BETTER.

**YOUR PERFECT MATCH:** FULL GLAM WEFTS

**PERFECT FOR:**

- ✓ MAXIMUM VOLUME
- ✓ LONG LUXURY LENGTHS
- ✓ STYLED GLAM LOOKS
- ✓ FULL TRANSFORMATIONS
- ✓ BRATZ-LEVEL CONFIDENCE

**RECOMMENDED FOR YOU:**

- 22–26 INCH LENGTHS
- HIGH-VOLUME INSTALLS
- LAYERED GLAM STYLING
- PREMIUM BLENDS

**YOUR DOLL ENERGY:**

MAIN CHARACTER. MAXIMUM GLAM. IMPOSSIBLE TO IGNORE.



# MOSTLY D's

## “THE LUXURY BARBIE DOLL”

YOU LOVE THE FINER THINGS.

POLISHED GLAM. EXPENSIVE BEAUTY. PERFECT DETAILS.

- ULTRA FLAWLESS
- SILKY
- HIGH-END
- POLISHED TO PERFECTION

YOU UNDERSTAND THAT LUXURY BEAUTY IS IN THE MAINTENANCE, THE FINISH & THE DETAILS.

YOU DON'T JUST WANT EXTENSIONS.

**YOUR PERFECT MATCH:** PREMIUM LUXURY TRANSFORMATION

### PERFECT FOR:

- ✓ ULTRA LUXE FINISHES
- ✓ FULL DENSITY GLAM
- ✓ HIGH-END BLONDES & BRUNETTES
- ✓ SEAMLESS PREMIUM BLENDS
- ✓ EXPENSIVE-LOOKING HAIR

### RECOMMENDED FOR YOU:

- PREMIUM CUSTOM BLENDS
- 22–26 INCH LENGTHS
- LUXURY MAINTENANCE PLANS
- FULL-VOLUME TRANSFORMATIONS

### YOUR DOLL ENERGY:

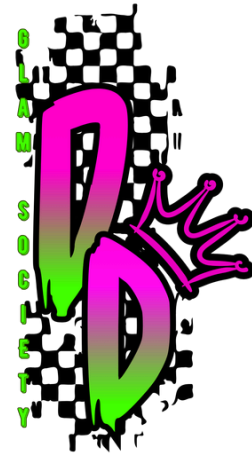
EXPENSIVE HAIR. EXPENSIVE AURA.





# SHARE YOUR RESULTS

SCREENSHOT YOUR PERFECT MATCH  
RESULT & TAG  
@DARKDOLLZGLAMSOCIETY ON  
INSTAGRAM TO SHOW US WHICH DARK  
DOLL YOU ARE.



## READY TO ENTER YOUR DOLL ERA?

BOOK YOU PERSONALISED  
CONSULTATION & LET'S CREATE  
YOUR DREAM TRANSFORMATION

---

[DARKDOLLZ.COM.AU](http://DARKDOLLZ.COM.AU)

---

[WWW.INSTAGRAM.COM/DARKDOLLZGLAMSOCIETY](http://WWW.INSTAGRAM.COM/DARKDOLLZGLAMSOCIETY)

---

[BOOKINGS](#)

---

Page 17