

SEEPL

STATIC ENGINEERING EQUIPMENTS PVT LTD

स्टॅटिक इंजिनियरिंग इक्विपमेंट्स प्राइवेट लिमिटेड

sales@staticengineering.com

marketing@staticengineering.com

ISO 9001:2015 Certified

PRODUCT - WINCH

A range of compact lifting and pulling winches utilizing electric or hydraulic motors or tools. The heavy-duty planetary gearbox is located within the drum core, which both saves space and protects the gearbox from any external mechanical threats. Various lifting capacity with this range. Depending on your power source and application, we can select and offer the correct model for you.

PRODUCT SPECIFICATIONS

Material	:	Cast Iron
Power Source	:	Hand / Electric Motor / Tool
Capacity	:	350 KGS to 2500 KGS
Type	:	Electric Winches
Usage / Applications	:	Industrial (High Mast)
Rope Length	:	> 25 Meters
Colour	:	Blue
Minimum Order QTY	:	10 Nos.
Brand	:	SEEPL

PRODUCT DESCRIPTIONS

This winch has been specifically developed for servicing **High Mast Lighting Systems**. It is used for lowering the lights down the mast for all servicing requirements. High factors of safety and top-grade materials ensure reliability and safety for years. The winch has a number of unique features which make it a leader, namely:

INDEPENDENT DRIVES for each drum which allow rope equalising at any time by simply removing the splitter gearbox from the two input shafts, doing the necessary adjustment, replacing the splitter gearbox and continuing the operation.

Reg Ofc : 603, Building No. 9, Survey No. 128/129, Sarvodaya Nagar, Ambarnath(West)-421 503, Maharashtra, INDIA

Storage Facility : Anand Nagar MIDC, Ambarnath (East) -421 501, Dist - Thane, Maharashtra, INDIA

SELF SUSTAINING worm gear drives which offer maximum safety and load control.

DOUBLE ROPES from the independent drums give maximum safety through load sharing thus allowing the winch to be used to hoist men up the mast for maintenance purposes.

(Permission for man hoisting must be obtained from the factory inspector).

GROOVED DRUMS with undercut flanges facilitate even rope laying which gives best rope life and helps ensure that the ropes will share the load once they have been levelled.

POWER TOOLS such as construction type drilling machines can be used to raise and lower the load. A reversible drive is not required as by using the power drive on the different input shafts the direction of rotation of the drums is reversed through the splitter gearbox.

PORTABILITY has been achieved through extensive use of aluminum castings to keep the weight to a minimum.

GREASE FILLED work gear housings ensure years of maintenance free duty.

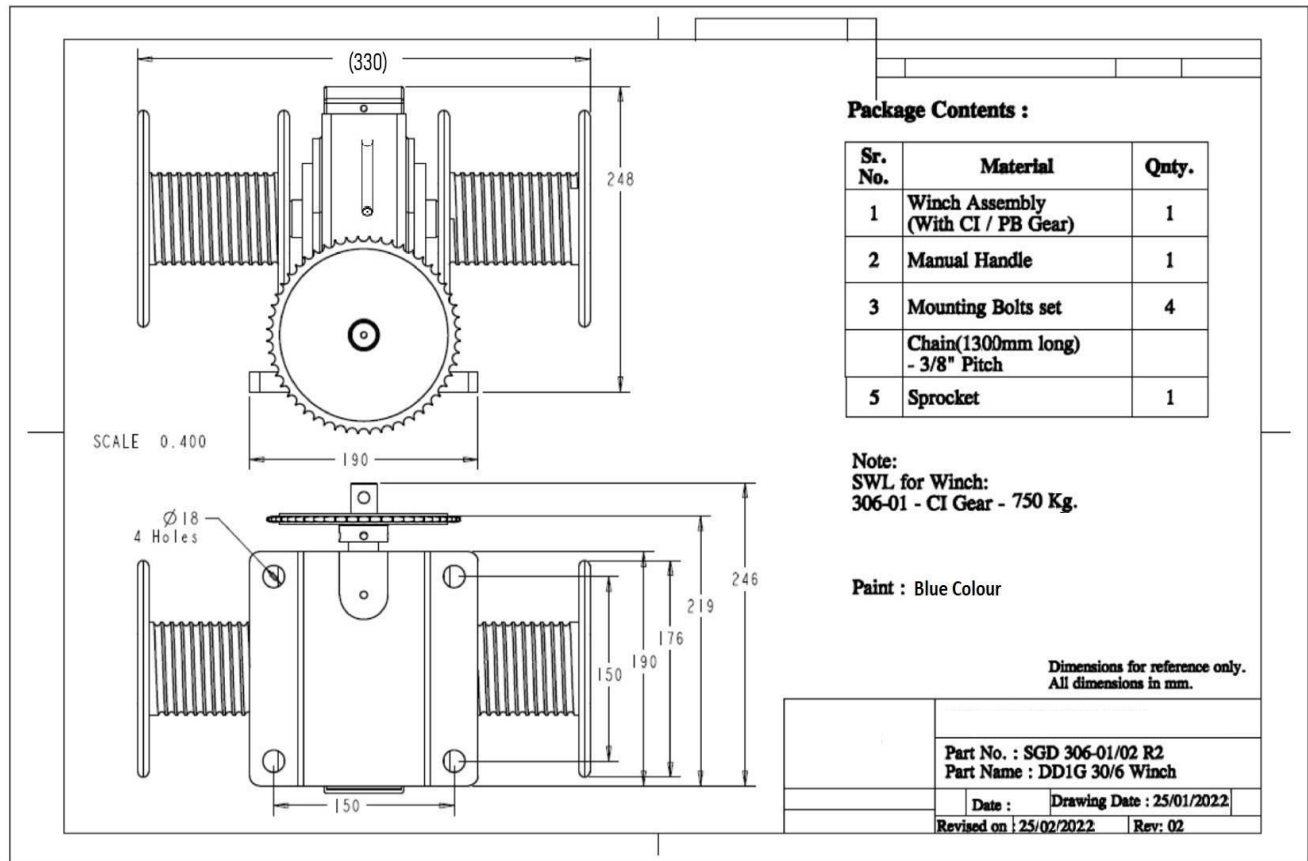
SAMPLE WINCH CERTIFICATE (Pre-Delivery Inspection)

TYPE OF WINCH	QUANTITY	SERIAL NUMBER
SGDD WINCH – 30/6 – 750 KG or VTA	VTA	XXX

SR. NO.	TEST CONDUCTED	RESULTS
1	Visual Inspection (for Gear Teeth's, Seating of Ropes, Dimensions)	OK
2	Winch Operation (Manual)	OK
3	Safe Working Load Label	As per above details
4	Check for oil leakages	NIL
5	Gear Ratio	53:1
6	Lubricant instruction labels	SAE 140



GENERAL DRAWING for Information -



For Any Sales Enquiries

sales@staticengineering.com

marketing@staticengineering.com

Representative Contact No.

Shoma Roy Bardhan +91 77384 50918
BUSINESS DEVELOPMENT OFFICER

Sunil Nair +91 99605 17361
PRODUCT SALES - MANAGER