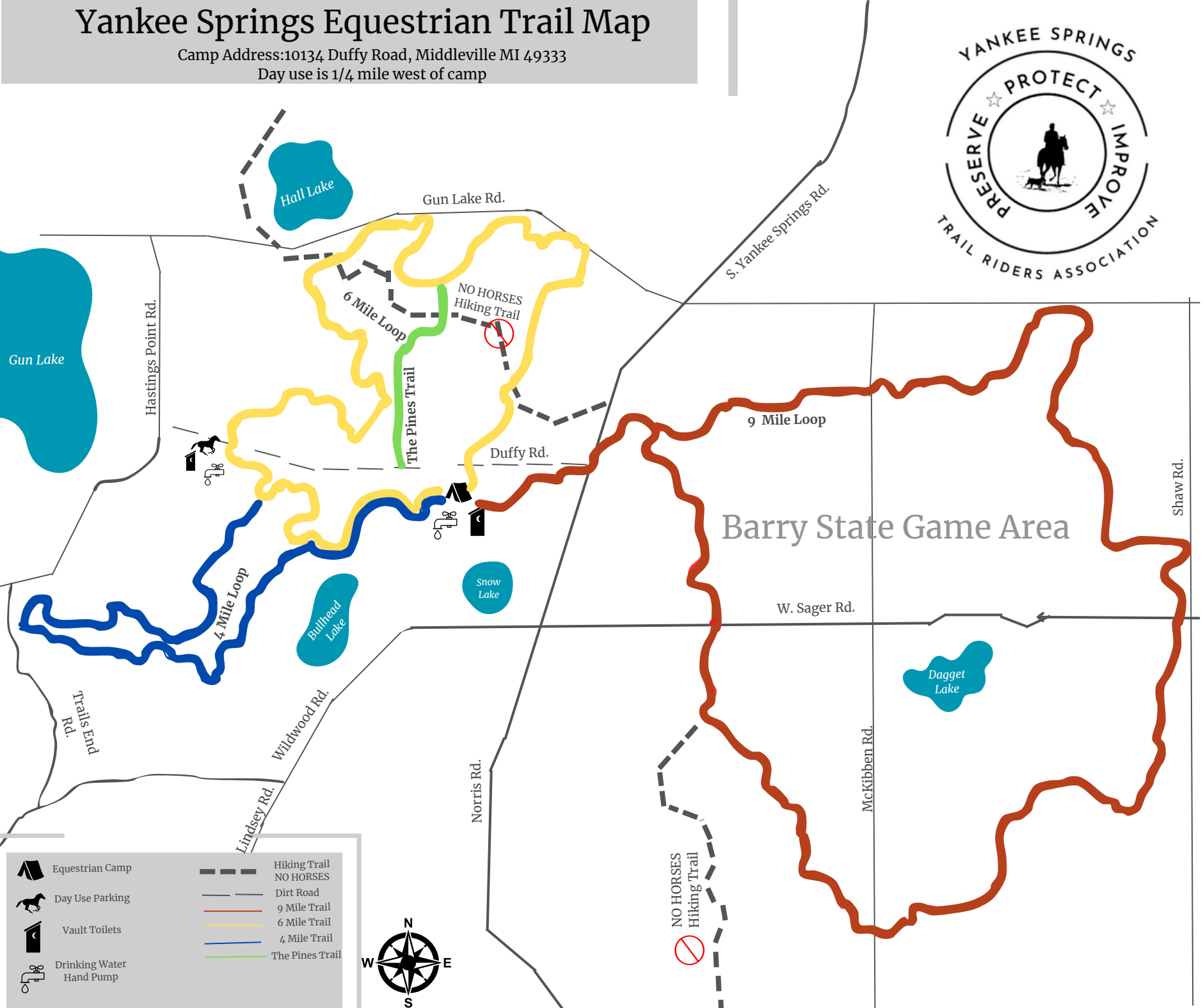



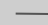
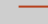

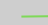

# Yankee Springs Equestrian Trail Map

Camp Address: 10134 Duffy Road, Middleville MI 49333

Day use is 1/4 mile west of camp



-  Equestrian Camp
-  Day Use Parking
-  Vault Toilets
-  Drinking Water Hand Pump

-  Hiking Trail  
NO HORSES
-  Dirt Road
-  9 Mile Trail
-  6 Mile Trail
-  4 Mile Trail
-  The Pines Trail

