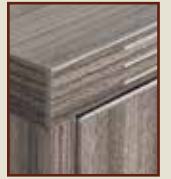


# Lodi

January  
2023



Espresso



Urban Walnut



 <b>NAP-14-CHY</b> <b>NAP-14-ESP</b> <b>NAP-14-SGW</b> <b>NAP-14-URB</b> Keyboard Tray 26"x12" CU:0.6 WT:13 <b>List Price: \$90</b>	 <b>NAP-15-CHY</b> <b>NAP-15-ESP</b> <b>NAP-15-SGW</b> <b>NAP-15-URB</b> <b>LOD-15-BLK</b> Center Drawer 20"x15" CU:0.82 WT:9 <b>List Price: \$100</b>	 <b>NAP-27-CHY</b> <b>NAP-27-ESP</b> <b>NAP-27-SGW</b> <b>NAP-27-URB</b> Round Table 42"Dia.x29"H CU:4.3 WT:95 <b>List Price: \$640</b>	 <b>NAP-35-CHY</b> <b>NAP-35-ESP</b> <b>NAP-35-SGW</b> <b>NAP-35-URB</b> Conference Table 71"x35"x29" CU:6.67 WT:139 <b>List Price: \$755</b>	 <b>NAP-36-CHY</b> <b>NAP-36-ESP</b> <b>NAP-36-SGW</b> <b>NAP-36-URB</b> Conference Table 95"x44"x29" CU:10.79 WT:190 <b>List Price: \$1260</b>
 <b>NAP-100-CHY</b> <b>NAP-100-ESP</b> <b>NAP-100-SGW</b> <b>NAP-100-URB</b> Presentation Board 48"x48" CU:8.48 WT:101 <b>List Price: \$830</b> <i>Ships Assembled</i>	 <b>NAP-122-CHY</b> <b>NAP-122-ESP</b> <b>NAP-122-SGW</b> <b>NAP-122-URB</b> Reception Desk Shell 71"x30"/36"x42" CU:8.27 WT:207 <b>List Price: \$930</b>	 <b>NAP-123</b> Reception Return Shell Fits NAP122 71"x17.5"x0.5" CU:1.92 WT:79 <b>List Price: \$515</b>	 <b>NAP-125-CHY</b> <b>NAP-125-ESP</b> <b>NAP-125-SGW</b> <b>NAP-125-URB</b> Reception Return Shell 42"x24"x41" CU:4.13 WT:100 <b>List Price: \$470</b>	 <b>NAP-WM36-CHY</b> <b>NAP-WM36-ESP</b> <b>NAP-WM36-SGW</b> <b>NAP-WM36-URB</b> Wall-Mount Overhead 36"x15"x17" CU:6.62 WT:55 <b>List Price: \$485</b> <i>Ships Assembled</i>
 <b>NAP-WM48-CHY</b> <b>NAP-WM48-ESP</b> <b>NAP-WM48-SGW</b> <b>NAP-WM48-URB</b> Wall-Mount Overhead 48"x15"x17" CU:8.74 WT:71 <b>List Price: \$610</b> <i>Ships Assembled</i>				

**DESKS**

 <b>LOD-01-xxx</b> Desk Shell 71"x35"x29" CU:4.28 WT:118 <b>List Price: \$555</b>	 <b>LOD-101-xxx</b> Desk Shell 71"x30"x29" CU:3.64 WT:106 <b>List Price: \$530</b>	 <b>LOD-02-xxx</b> Desk Shell 66"x30"x29" CU:3.39 WT:95 <b>List Price: \$485</b>	 <b>LOD-03-xxx</b> Desk Shell 60"x30"x29" CU:3.09 WT:90 <b>List Price: \$450</b>	 <b>LOD-22-xxx</b> Desk Shell 45"x24"x29" CU:2.37 WT:62 <b>List Price: \$340</b>
--	---	---	---	---

**RETURNS**

 <b>LOD-45-xxx</b> Return Shell 48"x24"x29" CU:1.99 WT:55 <b>List Price: \$330</b>	 <b>LOD-46-xxx</b> Return Shell 42"x20"x29" CU:1.5 WT:43 <b>List Price: \$270</b>
---	--

**BRIDGES**

 <b>LOD-70-xxx</b> Bridge 48"x24"x29" CU:1.64 WT:43 <b>List Price: \$250</b>	 <b>LOD-71-CHY</b> Bridge - Cherry 42"x20"x29" CU:1.24 WT:35 <b>List Price: \$195</b>
---	--

**CREDENZAS**

 <b>LOD-43-xxx</b> Credenza Shell 71"x20"x29" CU:2.46 WT:75 <b>List Price: \$385</b>
---

**STORAGE & FILING**

 <b>LOD-13-xxx</b> 2-Door Storage Cabinet 30"x20"x29" CU:3.32 WT:77 <b>List Price: \$450</b>	 <b>LOD-12-xxx</b> Lateral File 30"x20"x29" CU:1.139 WT:109 <b>List Price: \$945</b> <i>Ships Assembled</i>
---	---

**PEDESTAL**

 <b>LOD-76-xxx</b> Box File Hanging Pedestal 15.5"x17.75"x18" CU:4.13 WT:40 <b>List Price: \$370</b> <i>Ships Assembled</i>
---

**HUTCHES**

 <b>LODxxx-41</b> Overhead with Wood/Glass Doors 71"x14"x36" CU:4.9 WT:118 Consists of: LOD-44H & NAP-4DC <b>List Price: \$810</b>	 <b>LODxxx-42</b> Overhead with Aluminum/Glass Doors 71"x14"x36" CU:5.1 WT:114 Consists of: LOD-44H & NAP-4DG <b>List Price: \$830</b>	 <b>LODxxx-44</b> Overhead with Wood Doors 71"x14"x36" CU:4.8 WT:119 Consists of: LOD-44H & NAP-4DW <b>List Price: \$745</b>
---	---	---

 <b>LOD-55-xxx</b> 2-Shelf Bookcase 30"x12"x29" CU:1.8 WT:47 <b>List Price: \$385</b>	 <b>LOD-53-xxx</b> Open Hutch 30"x12"x36" CU:1.8 WT:55.0 <b>List Price: \$300</b>
--	--

**ACCESSORIES**

 <b>PM5311B</b> Black Power Charger Clamp-Mount Includes: USB Type-C, USB Type-A & (3) A/C plugs Fits 1/2" - 1 1/2" surfaces CU:0.22 WT:3 <b>List Price: \$275</b>	 <b>PM8311B</b> Black Power Charger Undersurface Mount Includes: USB Type-C, USB Type-A & (3) A/C plugs CU:0.22 WT:3 <b>List Price: \$275</b>
--	--

**NOTE:** NAPA items on this page feature matching wood grain laminates with Lodi products shown on previous page.



LODURB-41: Overhead with Wood/Glass Doors



LODURB-42: Overhead with Aluminum/Glass Doors



LODURB-44: Overhead with Wood Doors

 <b>NAP-GM</b> Metallic Grommets (5-Pack) 2.5"x2.5"x1" CU:0.02 WT:1 <b>List Price: \$110</b>	 <b>NAP-PM</b> Metallic Drawer Pulls (10-Pack) 4"x1"x0.5" CU:0.005 WT:0.01 <b>List Price: \$110</b>	 <b>LK1-GC</b> Lock Core with Keys <b>\$20 List</b> <b>KC-GC Change Key</b> <b>\$10 List</b> <b>KM-GC Master Key</b> <b>\$10 List</b>
--	---	--

 <b>NAPT-3</b> Tackboard for NAP42/44 SON44, KEN42/44 65"x17.5" Black Fabric CU:1.12 WT:15 <b>List Price: \$210</b>
--

<b>Tackboard Custom Fabric</b> NAPT-____ (Specify Fabric) <b>Grade A \$270</b> <b>Grade B \$305</b> <b>Grade C \$340</b> <b>Grade R \$375</b>
---



LOD-12-URB 2-Drawer Lateral File

LOD-53-URB Open Hutch



**New Jersey Distribution Center**

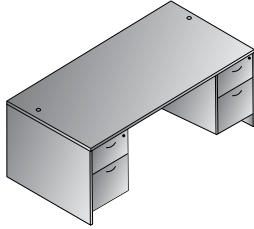
1 Oxford Drive, Moonachie, NJ 07074  
 p. 201.393.0900 | p. 800.872.3375  
 f. 201.393.0955



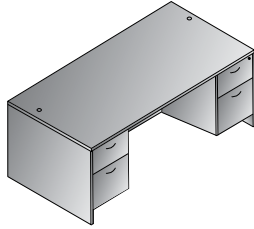
www.officestart.net

**Texas Distribution Center**

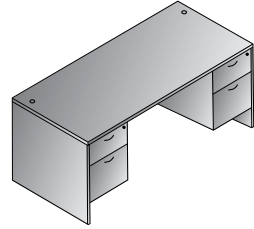
3955 E., I-30, Grand Prairie, TX 75050  
 p. 909.930.2000 | f. 909.930.5419



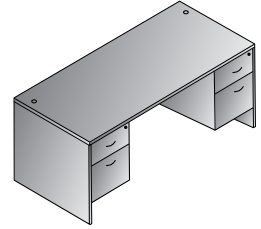
Double Pedestal Desk 71"x35"  
**LODxxx-TYP2**  
 11.2 cu. ft. 191.4 lbs.  
 Consists of: LOD-01,76,76  
**\$1,295**



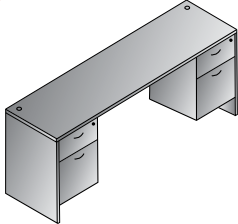
Double Pedestal Desk 71"x30"  
**LODxxx-TYP301**  
 10.8 cu. ft. 178.2 lbs.  
 Consists of: LOD-101,76,76  
**\$1,270**



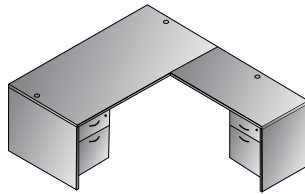
Double Pedestal Desk 66"x30"  
**LODxxx-TYP3**  
 10.3 cu. ft. 171.6 lbs.  
 Consists of: LOD-02,76,76  
**\$1,225**



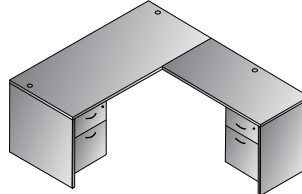
Double Pedestal Desk 60"x30"  
**LODxxx-TYP4**  
 10.0 cu. ft. 165 lbs.  
 Consists of: LOD-03,76,76  
**\$1,190**



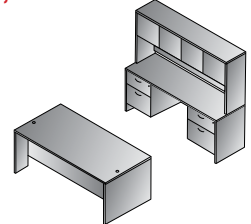
Double Pedestal Credenza 71"x20"  
**LODxxx-TYP5**  
 9.4 cu. ft. 147.4 lbs.  
 Consists of: LOD-43,76,76  
**\$1,125**



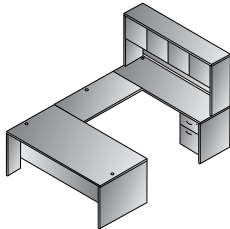
L-Shape Desk 71"x78"  
**LODxxx-TYP308**  
 12.4 cu. ft. 235.4 lbs.  
 Consists of: LOD-101,76,45,76  
**\$1,600**



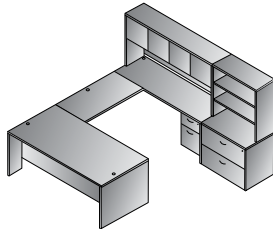
L-Shape 66"x78"  
**LODxxx-TYP9**  
 11.9 cu. ft. 228.8 lbs.  
 Consists of: LOD-02,76,45,76  
**\$1,555**



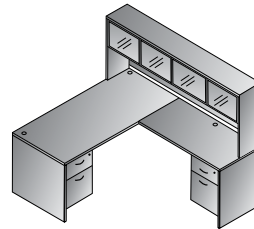
Executive Office  
**LODxxx-TYP311**  
 25.0 cu. ft. 444.6 lbs.  
 Consists of: LOD-101,76,76,43,76,76,44  
 LOD44 consists of: LOD-44H,NAP-4DW  
**\$3,140**



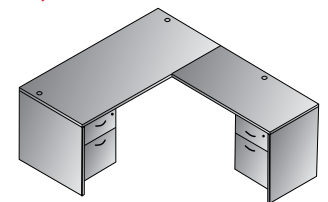
U Shape w/Hutch 71"x98"  
**LODxxx-TYP312**  
 19.6 cu. ft. 420.4 lbs.  
 Consists of: LOD-101,76,70,43,76,44  
 LOD44 consists of: LOD-44H,NAP-4DW  
**\$2,650**



U Shape w/Hutch + Storage 101"x98"  
**LODxxx-TYP313**  
 32.8 cu. ft. 578.8 lbs.  
 Consists of: LOD-101,76,70,43,76,44,12,53  
 LOD44 consists of: LOD-44H,NAP-4DW  
**\$3,895**



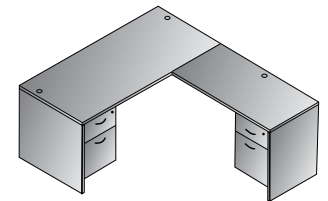
L-Shape w/Hutch 66"x72"  
**LODxxx-TYP31**  
 16.5 cu. ft. 338.8 lbs.  
 Consists of: LOD-02,76,46,76,41  
 LOD41 consists of: LOD-44H,NAP-4DC  
**\$2,305**



L-Shape 66"x72"  
**LODxxx-TYP32**  
 11.8 cu. ft. 217.8 lbs.  
 Consists of: LOD-02,76,46,76  
**\$1,495**



Cherry



L-Shape 60"x72"  
**LODxxx-TYP34**  
 11.5 cu. ft. 211.2 lbs.  
 Consists of: LOD-03,76,46,76  
**\$1,460**

**Finish Key**  
**CHY** - Cherry  
**ESP** - Espresso  
**SGW** - Slate Grey  
**URB** - Urban Walnut

Copyright © January 2023  
 Office Star® Products  
 All Rights Reserved

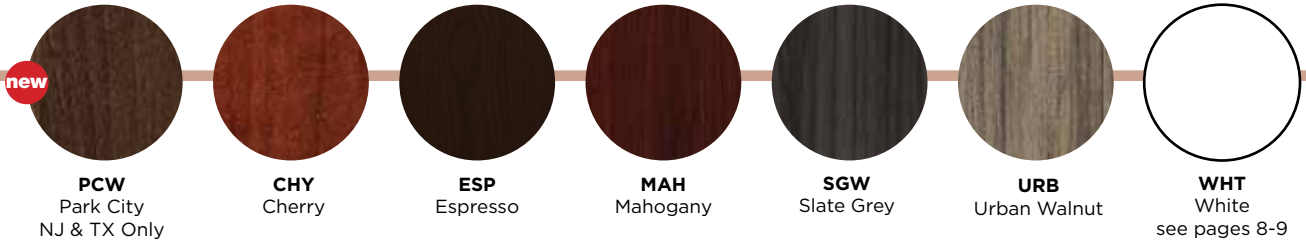


**NAPA COLLECTION**

NAPA modular laminate casegoods provide extensive selection, capability and value. Full 1-1/8" thick worksurfaces and 2"-thick table tops are built with high-grade, contract-quality wood grain laminates. Napa is CARB compliant and GREENGUARD certified. Impact-resistant 3mm edges include a reeded edge detail. Choose from standard and StepFront style desks.

Napa colors coordinate with **Systems IN STOCK**, Ascend II Height Adjustable, Training Tables, Multipurpose Bookcases, Study Carrels and more.

**FINISH  
KEY**



**PCW**  
Park City  
NJ & TX Only

**CHY**  
Cherry

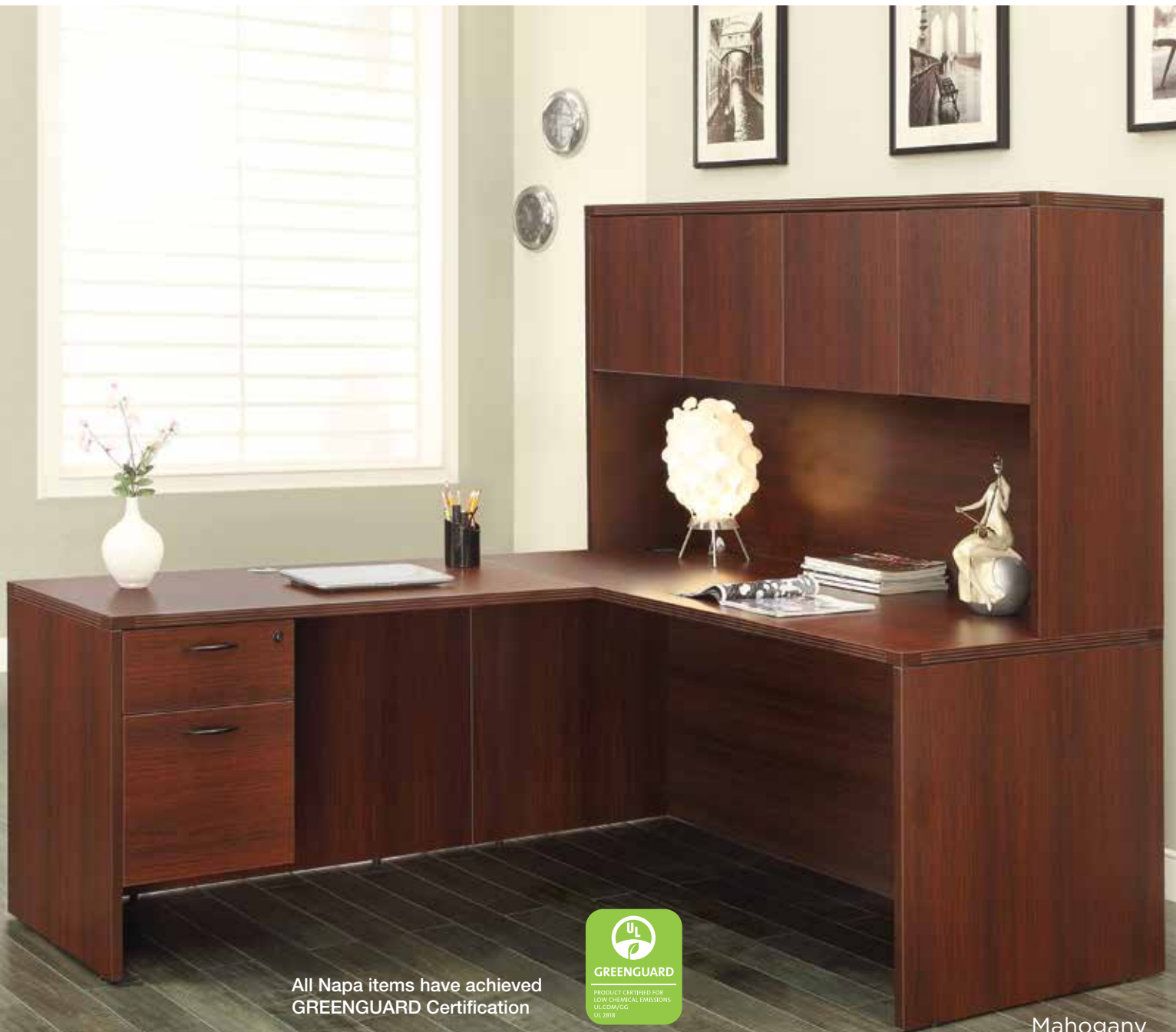
**ESP**  
Espresso

**MAH**  
Mahogany

**SGW**  
Slate Grey

**URB**  
Urban Walnut

**WHT**  
White  
see pages 8-9



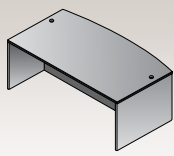
All Napa items have achieved  
GREENGUARD Certification



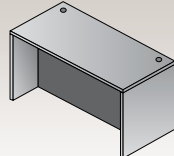
Mahogany



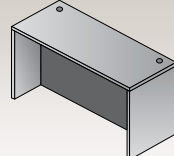
## DESKS



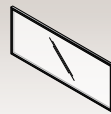
**NAP-89-xxx**  
Bow Desk Shell  
71"x41"x29"  
CU:7.31 WT:173  
List Price: **\$805**



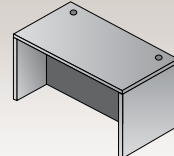
**NAP-01-xxx**  
Desk Shell  
71"x36"x29"  
CU:6.36 WT:162  
List Price: **\$685**



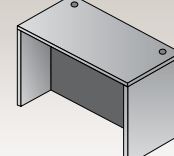
**NAP-101-xxx**  
Desk Shell  
71"x30"x29"  
CU:5.3 WT:121.0  
List Price: **\$655**



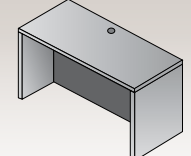
**NAP-88**  
Glass Modesty Panel  
Fits NAP01, NAP87L,  
NAP87R, NAP89, NAP-101  
69"x28"x1" CU:3.06 WT:56  
Use: NAP85 & NAP 86  
Pedestals  
List Price: **\$325**



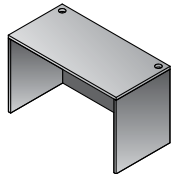
**NAP-02-xxx**  
Desk Shell  
66"x30"x29"  
CU:5.08 WT:136  
List Price: **\$560**



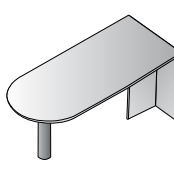
**NAP-03-xxx**  
Desk Shell  
60"x30"x29"  
CU:4.63 WT:128  
List Price: **\$535**



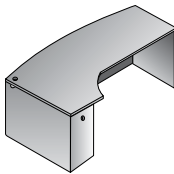
**NAP-21-xxx**  
Desk Shell  
48"x30"x29"  
CU:4.8 WT:110  
List Price: **\$515**



**NAP-22-xxx**  
Desk Shell  
48"x24"x29"  
CU:3.6 WT:81  
List Price: **\$445**



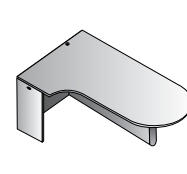
**NAPxxx-47**  
Bullet  
71"x36"x29"  
CU:6.64 WT:117  
Consists of:  
NAP-47T, 47PBLK  
List Price: **\$745**



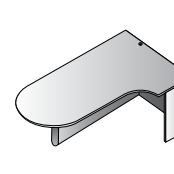
**NAP-87TL-xxx**  
Left Corner Desk  
71"x30"/48"x29"  
CU:8.4 WT:184.1  
List Price: **\$930**



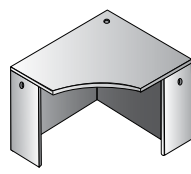
**NAP-87TR-xxx**  
Right Corner Desk  
71"x30"/48"x29"  
CU:8.4 WT:184.1  
List Price: **\$930**



**NAPxxx-57L**  
Left Computer Corner  
Bullet  
71"x30"/42"x29"  
CU:8.2 WT:145.5  
Consists of:  
NAP57TL, 57PBLK  
List Price: **\$925**

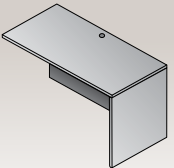


**NAPxxx-57R**  
Right Computer Corner  
Bullet  
71"x30"/42"x29"  
CU:8.2 WT:145.5  
Consists of:  
NAP57TR, 57PBLK  
List Price: **\$925**

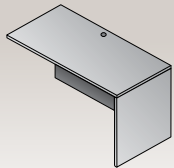


**NAP-83-xxx**  
Corner Unit  
42"x42"x29"  
CU:5.0 WT:126  
List Price: **\$600**

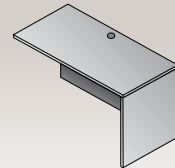
## RETURNS



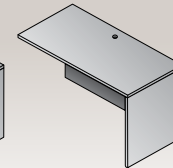
**NAP-45-xxx**  
Return Shell  
47"x23.5"x29"  
CU:3.81 WT:90  
List Price: **\$440**



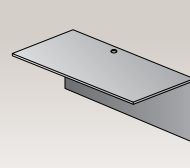
**NAP-96-xxx**  
Return Shell  
42"x23.5"x29"  
CU:3.41 WT:79  
List Price: **\$415**



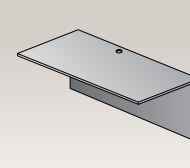
**NAP-46-xxx**  
Return Shell  
42"x20"x29"  
CU:3.42 WT:88  
List Price: **\$385**  
*\*\*Use with NAP76 Ped*



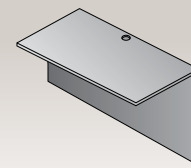
**NAP-92-xxx**  
Return Shell  
36"x23.5"x29"  
CU:2.95 WT:74  
List Price: **\$355**



**NAP-70-xxx**  
Bridge  
47"x23.5"x29"  
CU:2.94 WT:71  
List Price: **\$355**



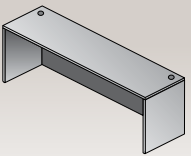
**NAP-98-xxx**  
Bridge  
42"x23.5"x29"  
CU:2.63 WT:63  
List Price: **\$325**



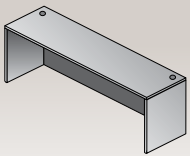
**NAP-93-xxx**  
Bridge  
35"x23.5"x29"  
CU:2.24 WT:56  
List Price: **\$295**

## BRIDGES

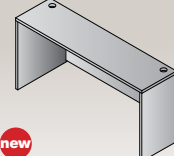
## CREDENZAS



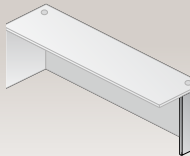
**NAP-43-xxx**  
Credenza Shell  
71"x24"x29"  
CU:4.97 WT:122  
List Price: **\$540**



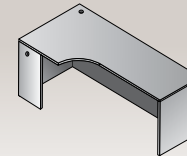
**NAP-11-xxx**  
Credenza Shell  
66"x24"x29"  
CU:4.64 WT:112  
List Price: **\$505**



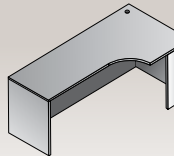
**NAP-08-xxx**  
Credenza Shell  
60"x24"x29"  
CU:4.3 WT:119  
List Price: **\$490**



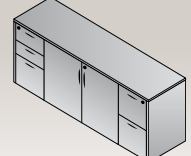
**NAP-SL2-xxx**  
Support Leg (2-pack)  
11"x28"H  
CU:0.8 WT:9.0  
List Price: **\$145**



**NAP-82L-xxx**  
Left Corner Credenza  
71"x36"x29"  
CU:6.36 WT:149  
List Price: **\$755**

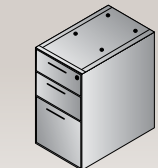


**NAP-82R-xxx**  
Right Corner Credenza  
71"x36"x29"  
CU:6.36 WT:149  
List Price: **\$755**

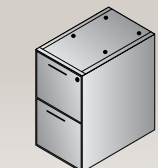


**NAPxxx-110**  
Storage Credenza  
71"x22.5"x29"  
CU:16.7 WT:224  
Consists of:  
NAP-110A, 110B  
List Price: **\$1985**

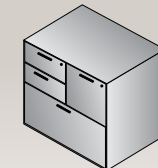
## PEDESTALS



**NAP-65-xxx**  
BBF Ped  
15.5"x22"x28"  
CU:7.41 WT:78  
List Price: **\$630**  
Ships Assembled



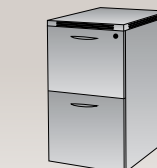
**NAP-74-xxx**  
FF Ped  
15.5"x22"x28"  
CU:7.41 WT:74  
List Price: **\$630**  
Ships Assembled



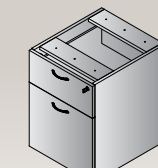
**NAP-69-xxx**  
MultiFile Ped  
31"x22"x29"  
CU:14.4 WT:154  
List Price: **\$1240**  
Ships Assembled



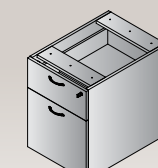
**NAP-85-xxx**  
Mobile BBF Ped  
14"x22"x27H"  
CU:6.78 WT:75  
List Price: **\$790**  
Ships Assembled,  
except casters



**NAP-86-xxx**  
Mobil FF Ped  
14"x22"x27H"  
CU:6.78 WT:71  
List Price: **\$790**  
Ships Assembled,  
except casters

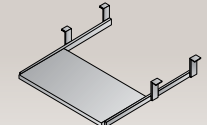


**NAP-76-xxx**  
Hanging Ped-20" Return  
15.5"x18.5"x21"  
CU:4.85 WT:51  
List Price: **\$485**  
Ships Assembled  
Use with NAP46

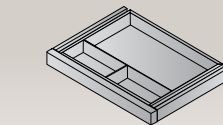


**NAP-80-xxx**  
Hanging BF Ped  
15.5"x22"x21"  
CU:5.73 WT:61  
List Price: **\$485**  
Ships Assembled

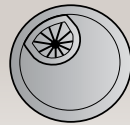
## ACCESSORIES \*new USB/Power Modules on page 7



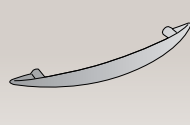
**NAP-14-xxx**  
Keyboard Tray  
26"x12"  
CU:0.6 WT:13  
List Price: **\$90**



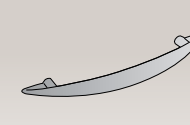
**NAP-15-xxx**  
Center Drawer  
20"x15"  
CU:0.82 WT:9  
List Price: **\$100**



**NAP-GM**  
Metallic Grommets  
(5-Pack)  
2.5"x2.5"x1"  
CU:0.02 WT:1  
List Price: **\$110**



**NAP-PB**  
Black Drawer  
Pulls (10-Pack)  
4"x1"x0.5"  
CU:0.005 WT:0.01  
List Price: **\$110**

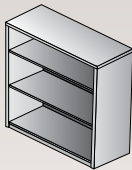
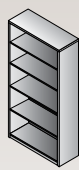
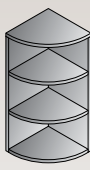
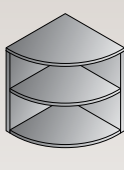
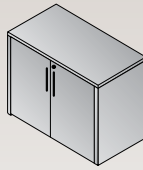
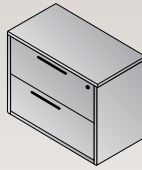
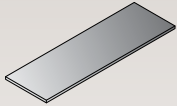



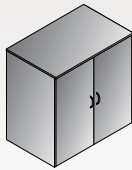
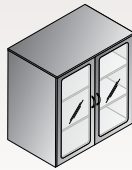
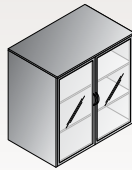
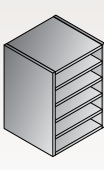


**NAP-PM**  
Metallic Drawer  
Pulls (10-Pack)  
4"x1"x0.5"  
CU:0.02 WT:1  
List Price: **\$110**

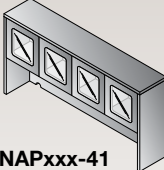
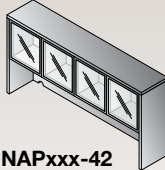
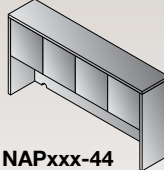
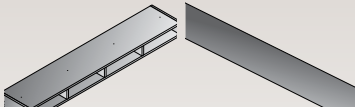
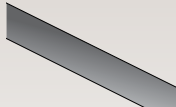

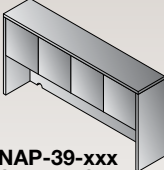

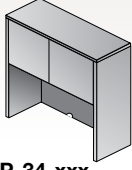
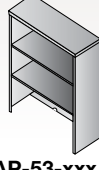
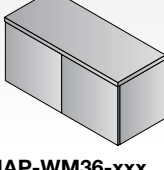
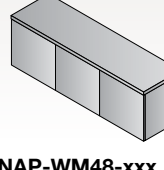
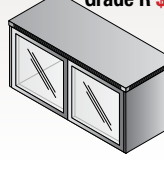
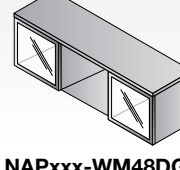
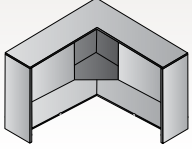


**LK1-GC**  
Lock Core with Keys  
**\$20** List  
**KC-GC** Change Key  
**\$10** List  
**KM-GC** Master Key  
**\$10** List

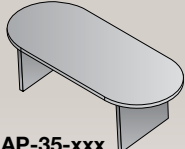
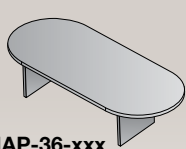
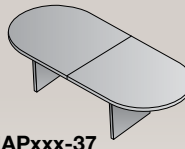
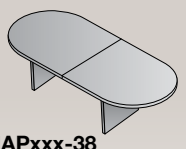
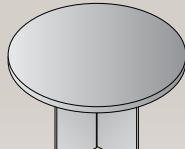
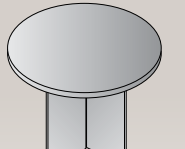


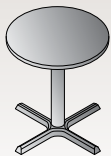

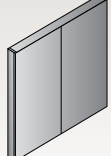
**STORAGE & FILING**

						
<b>NAP-55-xxx</b> 3-Shelf Bookcase 36"x14"x42" CU:4.45 WT:98 <b>List Price: \$520</b>	<b>NAP-56-xxx</b> 5-Shelf Bookcase 36"x14"x65" CU:6.83 WT:150 <b>List Price: \$720</b>	<b>NAP-253-xxx</b> 36" H Quarter-Round Open Hutch 15Wx15D 15"x15"x36" CU:1.65 WT:42 <b>List Price: \$290</b>	<b>NAP-254-xxx</b> 29" H Quarter-Round Bookcase 24Wx24D 24"x24"x29" CU:2.46 WT:62 <b>List Price: \$375</b>	<b>NAP-13-xxx</b> Storage Cabinet 36"x22.5"x29" CU:5.02 WT:118 <b>List Price: \$630</b>	<b>NAP-12-xxx</b> Lateral File 36"x22.5"x29" CU:16.79 WT:150 <b>List Price: \$1170</b> <i>Ships Assembled</i>	<b>NAP-T1213-xxx</b> NAP12/13 Combo Top 71"x22.5" CU:1.59 WT:49 <b>List Price: \$250</b>
						
<b>NAP-109-xxx</b> Four-Drawer Lateral File 36"x22.5"x53" CU:32.31 WT:201 <b>List Price: \$2230</b> <i>Ships Assembled</i>	<b>NAP-156-xxx</b> 65"H Storage Cabinet with 5 Shelves 36"x22.5"x65" CU:10.3 WT:236 <b>List Price: \$1795</b>	<b>NAP-152-xxx</b> Storage Cabinet 24"x22.5"x65" CU:25.69 WT:179 <b>List Price: \$1755</b> <i>Ships Assembled</i>	<b>NAPxxx-212DW</b> 36"H Storage Cabinet w/Wood Doors 36"x22.5"x36" CU:5.5 WT:154.3 Consists of: NAP-212H,2DW <b>List Price: \$900</b> <i>Use Freestanding or w/NAP12</i>	<b>NAPxxx-212DC</b> 36"H Storage Cabinet w/Glass/Wood Doors 36"x22.5"x36" CU:5.7 WT:155.4 Consists of: NAP-212H,2DC <b>List Price: \$945</b> <i>Use Freestanding or with NAP12</i>	<b>NAPxxx-212DG</b> 36"H Storage Cabinet w/Glass/Alum. Doors 36"x22.5"x36" CU:5.7 WT:155.4 Consists of: NAP-212H,2DG <b>List Price: \$990</b> <i>Use Freestanding or with NAP12</i>	<b>NAP-VO-BLK</b> Vertical Organizer, Black 12.5"x12.5"x18.5" CU:0.83 WT:26 <b>List Price: \$155</b>

**HUTCHES**

							
<b>NAPxxx-41</b> Overhead with Wood/Glass Doors 71"x15"x36" CU:6.3 WT:140 Consists of: NAP-44H,4DC <b>List Price: \$880</b>	<b>NAPxxx-42</b> Overhead with Glass Doors 71"x15"x36" CU:6.5 WT:136 Consists of: NAP-44H,4DG <b>List Price: \$900</b>	<b>NAPxxx-44</b> Overhead Storage 71"x15"x36" CU:5.98 WT:140 Consists of: NAP-44H,4DW <b>List Price: \$815</b>	<b>NAP-HO-BLK</b> Horizontal Organizer, Black Fits NAP41, 42 & 44 68.7"x13"x5" CU:3.27 WT:39 <i>Ships Assembled</i> <b>List Price: \$270</b>	<b>NAPTb-3</b> Tackboard for NAP42/44 SON44, KEN42/44 65"x17.5" Black Fabric CU:1.12 WT:15 <b>List Price: \$210</b>	<b>Tackboard</b> Custom Fabric NAPTb (Specify Fabric) <b>Grade A \$270</b> <b>Grade B \$305</b> <b>Grade C \$340</b> <b>Grade R \$375</b>	<b>NAP-39-xxx</b> Overhead Storage 66"x15"x36" CU:7.2 WT:126 <b>List Price: \$700</b>	<b>NAP-07-xxx</b> Overhead Storage 60"x15"x36" CU:6.7 WT:107 <b>List Price: \$690</b>
							
<b>NAP-34-xxx</b> Hutch with Doors 48"x15"x36" CU:4.24 WT:101 <b>List Price: \$565</b>	<b>NAP-53-xxx</b> Open Hutch 36"x14"x36" CU:3.86 WT:82 <b>List Price: \$420</b>	<b>NAP-WM36-xxx</b> Wall-Mount Overhead 36"x15"x17" CU:6.62 WT:55 <b>List Price: \$485</b> <i>Ships Assembled</i>	<b>NAP-WM48-xxx</b> Wall-Mount Overhead 48"x15"x17" CU:8.74 WT:71 <b>List Price: \$610</b> <i>Ships Assembled</i>	<b>NAPxxx-WM36DG</b> Wall-Mount Overhead with Glass Doors 36"x15"x17" CU:2.2 WT:54 Consists of: NAPWM36H,NAPWMDG <b>List Price: \$475</b>	<b>NAPxxx-WM48DG</b> Wall-Mount Overhead with Glass Doors 48"x15"x17" CU:2.7 WT:72 Consists of: NAPWM48H,NAPWMDG <b>List Price: \$580</b>	<b>NAP-84-xxx **</b> Corner Hutch 42"x42"x36" CU:7.05 WT:142 <b>List Price: \$790</b> <i>Not Available in PCW or SGW</i>	

**CONFERENCE**

					
<b>NAP-35-xxx</b> Conference Table 71"x35"x29" CU:6.67 WT:139 <b>List Price: \$755</b>	<b>NAP-36-xxx</b> Conference Table 95"x44"x29" CU:10.79 WT:190 <b>List Price: \$1260</b>	<b>NAPxxx-37</b> Conference Table 120"x48"x29" CU:11.3 WT:247 Consists of: NAP-37T,37S <b>List Price: \$1625</b>	<b>NAPxxx-38</b> Conference Table 144"x48"x29" CU: 14.2 WT: 294 Consists of: NAP-38T,38S <b>List Price: \$2005</b>	<b>NAP-23-xxx</b> RoundTable 47" Dia.x29"H CU:5.37 WT:109 <b>List Price: \$745</b>	<b>NAP-27-xxx</b> RoundTable 42" Dia.x29"H CU:4.3 WT:95 <b>List Price: \$640</b>
					
<b>29"H Tables with Black Metal Base</b>		<b>42"H Tables with Black Metal Base</b>		<b>NAP-100-xxx</b> Presentation Board 48"x48" CU:8.48 WT:101 <b>List Price: \$830</b> <i>Ships Assembled</i>	
<b>NAPxxx-32</b> 30" Dia.x29"H CU:3.1 WT:45.4 Consists of: NAP-32T,32B <b>List Price: \$515</b>	<b>NAPxxx-33</b> 36" Dia.x42"H CU:3.1 WT:58.4 Consists of: NAP-33T,33B <b>List Price: \$535</b>	<b>NAPxxx-132</b> 30" Dia.x42"H CU:4.0 WT:46 Consists of: NAP-32T,32B <b>List Price: \$640</b>	<b>NAPxxx-133</b> 36" Dia.x42"H CU:4.0 WT:59.1 Consists of: NAP-33T,32B <b>List Price: \$660</b>		



Slate Grey



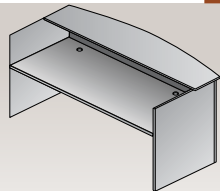
Cherry



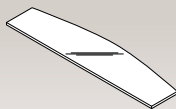
Wall-mount overheads with wood doors (shown above) or glass doors. Choose from full, ¾ and mobile pedestals, plus multifile and lateral file options.

Reception L workstation shown above with optional add-on glass top. Provides extensive work area.

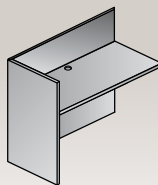
## RECEPTION



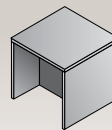
**NAP-122-xxx**  
Reception Desk Shell  
71"x35.75"/30"x41.5"  
CU:8.27 WT:207  
**List Price: \$930**



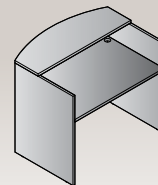
**NAP-123**  
Glass Floating Top  
Fits **NAP122**  
71"x17.5"x0.5"  
CU:1.92 WT:79  
**List Price: \$515**



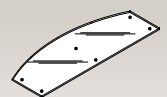
**NAP-125-xxx**  
Reception Return Shell  
42"x24"x41"  
CU:4.13 WT:100  
**List Price: \$470**



**NAP-20-xxx**  
End Table  
24"x24"x20"  
CU:2.03 WT:50  
**List Price: \$295**



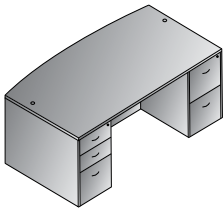
**NAP-121-xxx**  
48" Reception  
Desk Shell  
48"x35.75"/30"x41.5"  
CU: 7.4 WT: 163  
**List Price: \$765**  
Not Available in:  
CHY, MAH or URB



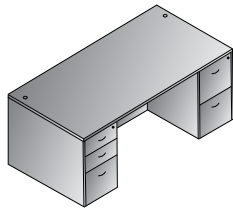
**NAP-126**  
48"W Glass Top  
\*Fits NAP121ESP  
48"x17.5"x48"  
CU: 1.34 WT: 47  
**List Price: \$445**



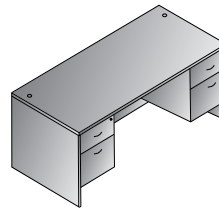
# TYPICALS



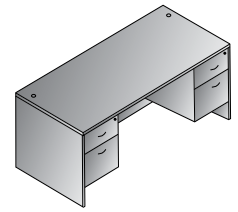
**Bow Top Desk 71" x 41"**  
**NAPxxx-TYP1**  
 21.3 cu. ft. 325.3 lbs.  
 Consists of: NAP-89,65,74  
**\$2,065**



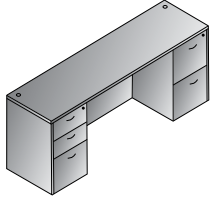
**Double Pedestal Desk 71" x 35"**  
**NAPxxx-TYP2**  
 20.4 cu. ft. 314.2 lbs.  
 Consists of: NAP-01,65,74  
**\$1,945**



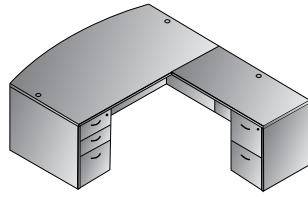
**Double Pedestal Desk 66" x 30"**  
**NAPxxx-TYP3**  
 15.7 cu. ft. 256.8 lbs.  
 Consists of: NAP-02,80,80  
**\$1,530**



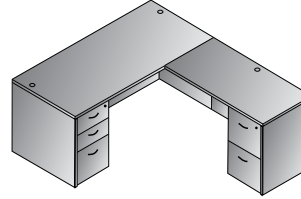
**Double Pedestal Desk 60" x 30"**  
**NAPxxx-TYP4**  
 15.2 cu. ft. 249.1 lbs.  
 Consists of: NAP-03,80,80  
**\$1,505**



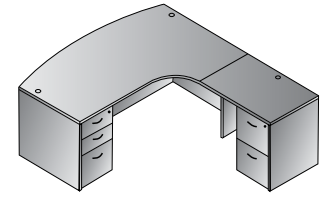
**Kneespace Credenza 71" x 24"**  
**NAPxxx-TYP5**  
 19.1 cu. ft. 274.6 lbs.  
 Consists of: NAP-43,65,74  
**\$1,800**



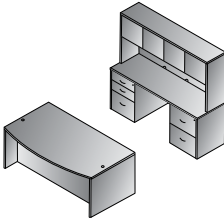
**L Shape w/Bow Top Desk 71" x 89"**  
**NAPxxx-TYP8**  
 25.1 cu. ft. 415.7 lbs.  
 Consists of: NAP-89,65,45,74  
**\$2,505**



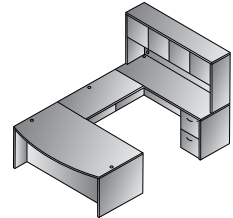
**L Shape 66" x 78"**  
**NAPxxx-TYP9**  
 22.9 cu. ft. 378.2 lbs.  
 Consists of: NAP-02,65,45,74  
**\$2,260**



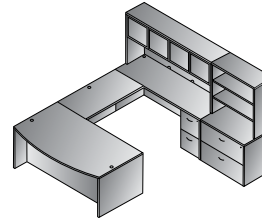
**Right L Shape w/Curved Corner 71" x 83"**  
**NAPxxx-TYP10R**  
 25.3 cu. ft. 410.2 lbs.  
 Consists of: NAP-87R,65,92,74  
**\$2,545**



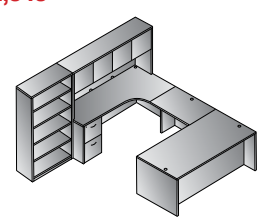
**Executive Office**  
**NAPxxx-TYP11**  
 47.3 cu. ft. 739.9 lbs.  
 Consists of: NAP-89,65,74,43, 65,74,44  
 NAP-44 consists of: NAP-44H,4DW  
**\$4,680**



**U Shape w/Hutch 71" x 113"**  
**NAPxxx-TYP12**  
 36.1 cu. ft. 658.2 lbs.  
 Consists of: NAP-89,65,70,43, 74, 44  
 NAP-44 consists of: NAP-44H,4DW  
**\$3,775**



**U Shape w/Hutch + Storage 108" x 113"**  
**NAPxxx-TYP13**  
 55.5 cu. ft. 889.7 lbs.  
 Consists of: NAP-89,65,70,43,74,44,12,53  
 NAP-44 consists of: NAP-44H,4DW  
**\$5,365**



**Left U + Bookcase 107" x 107"**  
**NAPxxx-TYP14L**  
 42.7 cu. ft. 809.1 lbs.  
 Consists of: NAP-01,65,93, 82R,74,44,56  
 NAP-44 consists of: NAP-44H,4DW  
**\$4,530**



**NAPA Espresso and Park City feature metallic drawer pulls.**

**Other colors feature black pulls; order NAP-PM optional metallic pulls.**

Espresso



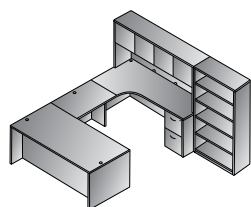
**NAP109**  
Four-Drawer Lateral File



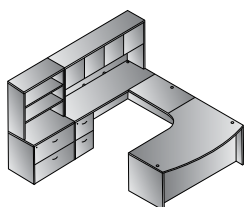
**NAP152**  
Storage Cabinet



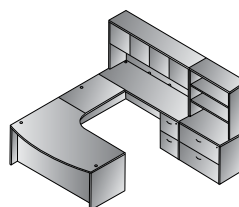
**NAP12**  
Lateral File  
**NAP53**  
Open Hutch



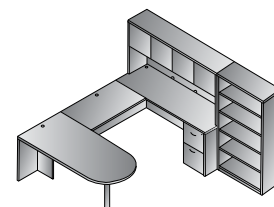
Right U + Bookcase 107"x107"  
**NAPxxx-TYP14R**  
42.7 cu. ft. 809.1 lbs.  
Consists of: NAP-01,65,93, 82L,74,44,56  
NAP-44 consists of: NAP-44H,4DW  
**\$4,530**



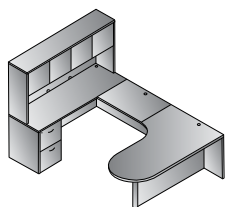
Left U w/Corner + Storage 107"x107"  
**NAPxxx-TYP15L**  
56.0 cu. ft. 886.4 lbs.  
Consists of: NAP-87L,65,93,43,74,44,12,53  
NAP-44 consists of: NAP-44H,4DW  
**\$5,430**



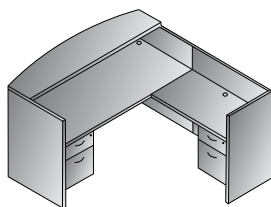
Right U w/Corner + Storage 107"x107"  
**NAPxxx-TYP15R**  
56.0 cu. ft. 886.4 lbs.  
Consists of: NAP-87R,65,93,43, 74,44,12,53  
NAP-44 consists of: NAP-44H,4DW  
**\$5,430**



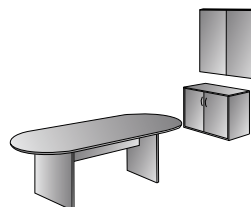
U w/Bullet + Bookcase 107"x108"  
**NAPxxx-TYP16**  
35.2 cu. ft. 673.5 lbs.  
Consists of: NAP-47,70,43, 74,44,56  
NAP-44 consists of: NAP-44H,4DW  
NAP-47 consists of: NAP-47T,47PBLK  
**\$3,805**



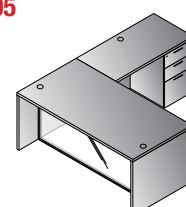
U w/Left Corner Bullet 71"x101"  
**NAPxxx-TYP18L**  
29.4 cu. ft. 538 lbs.  
Consists of: NAP-57L,93,43,74,44  
NAP-44 consists of: NAP-44H,4DW  
NAP-57L consists of: NAP-57TL,57PBLK  
**\$3,205**



Reception Station 71"x77"x42"H  
**NAPxxx-TYP19**  
22.2 cu. ft. 418.8 lbs.  
Consists of: NAP-122,80,125,76  
**\$2,370**



Conference Group 3-Pcs.  
**NAPxxx-TYP20**  
24.8 cu. ft. 408.9 lbs.  
Consists of: NAP-36,13,100  
**\$2,720**



L-Shape w/Glass Modesty Panel  
71"x84"  
**NAPxxx-TYP29G**  
19.3 cu. ft. 386.9 lbs.  
Consists of: NAP-01,45,65,88  
**\$2,385**

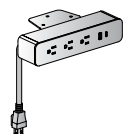


**NAPTYP205**  
Storage Credenza  
Consists of: NAP-T1213,12,13

## USB/Power Chargers



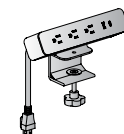
**PM8311W**



**PM8311B** Black  
**PM8311W** White  
Power Charger Undersurface Mount  
Includes: USB Type-C, USB Type-A & (3) A/C plugs  
CU:0.2 WT:1  
**List Price: \$275**



**PM5311B**



**PM5311B** Black  
**PM5311W** White  
Power Charger Clamp-Mount  
Includes: USB Type-C, USB Type-A & (3) A/C plugs  
Fits 1/2" - 1 1/2" surfaces  
CU:0.2 WT:1  
**List Price: \$275**

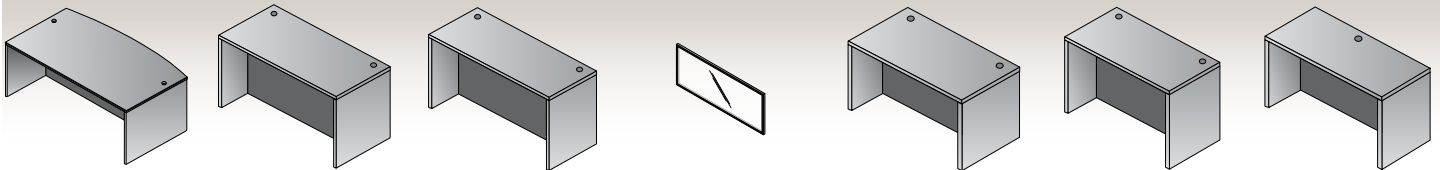


Introducing contemporary White laminate -- now available on an extensive selection of Napa items as shown on these pages. Includes the same features, functions and specifications as other Napa colors - in a modern white laminate & 3mm impact-resistant edges. Coordinates with our **Systems** *IN STOCK*, Ascend II height-adjustable, Training Table and Tuxedo Conference offerings.

# NAPA

## WHITE

### DESKS



**NAP-89-WHT**  
Bow Desk Shell  
71"x41"x29"  
CU:7.31 WT:173  
List Price: **\$805**

**NAP-01-WHT**  
Desk Shell  
71"x36"x29"  
CU:6.36 WT:162  
List Price: **\$685**

**NAP-101-WHT**  
Desk Shell  
71"x30"x29"  
CU:5.3 WT:121.0  
List Price: **\$655**

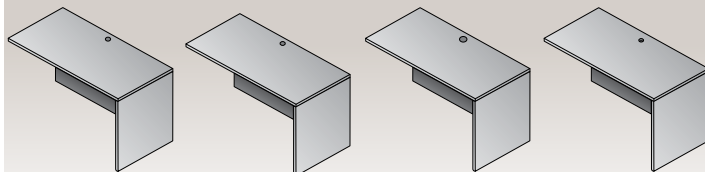
**NAP-88**  
Glass Modesty Panel  
Fits NAP01, NAP87L,  
NAP87R, NAP89, NAP-101  
69"x28"x1" CU:3.06 WT:56  
Use: NAP85 & NAP 86 Ped-  
estals  
List Price: **\$325**

**NAP-02-WHT**  
Desk Shell  
66"x30"x29"  
CU:5.08 WT:136  
List Price: **\$560**

**NAP-03-WHT**  
Desk Shell  
60"x30"x29"  
CU:4.63 WT:128  
List Price: **\$535**

**NAP-21-WHT**  
Desk Shell  
48"x30"x29"  
CU:4.8 WT:110  
List Price: **\$515**

### RETURNS



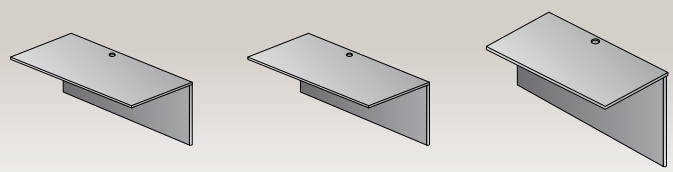
**NAP-45-WHT**  
Return Shell  
47"x23.5"x29"  
CU:3.81 WT:90  
List Price: **\$440**

**NAP-96-WHT**  
Return Shell  
42"x23.5"x29"  
CU:3.41 WT:79  
List Price: **\$415**

**NAP-46-WHT**  
Return Shell  
42"x20"x29"  
CU:3.42 WT:88  
List Price: **\$385**  
*\*\*Use with NAP76 Ped*

**NAP-92-WHT**  
Return Shell  
36"x23.5"x29"  
CU:2.95 WT:74  
List Price: **\$355**

### BRIDGES

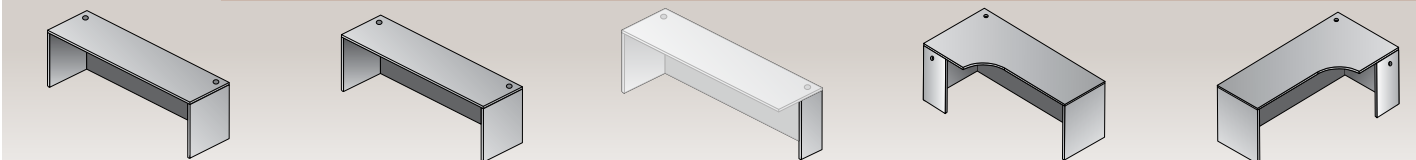


**NAP-70-WHT**  
Bridge  
47"x23.5"x29"  
CU:2.94 WT:71  
List Price: **\$355**

**NAP-98-WHT**  
Bridge  
42"x23.5"x29"  
CU:2.63 WT:63  
List Price: **\$325**

**NAP-93-WHT**  
Bridge  
35"x23.5"x29"  
CU:2.24 WT:56  
List Price: **\$295**

### CREDENZAS



**NAP-43-WHT**  
Credenza Shell  
71"x24"x29"  
CU:4.97 WT:122  
List Price: **\$540**

**NAP-11-WHT**  
Credenza Shell  
66"x24"x29"  
CU:4.64 WT:112  
List Price: **\$505**

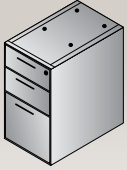
**NAP-SL2-WHT**  
Support Leg (2-pack)  
11"x28"H  
CU:0.8 WT:9.0  
List Price: **\$145**

**NAP-82L-WHT**  
Left Corner Credenza  
71"x36"x29"  
CU:6.36 WT:149  
List Price: **\$755**

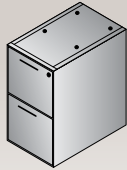
**NAP-82R-WHT**  
Right Corner Credenza  
71"x36"x29"  
CU:6.36 WT:149  
List Price: **\$755**



## PEDESTALS



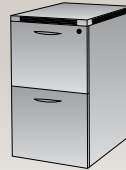
**NAP-65-WHT**  
BBF Ped  
15.5"x22"x28"  
CU:7.41 WT:78  
**List Price: \$630**  
Ships Assembled



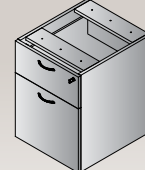
**NAP-74-WHT**  
FF Ped  
15.5"x22"x28"  
CU:7.41 WT:74  
**List Price: \$630**  
Ships Assembled



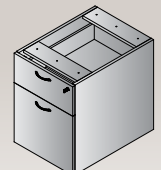
**NAP-85-WHT**  
Mobile BBF Ped  
14"x22"x27H"  
CU:6.78 WT:75  
**List Price: \$790**  
Ships Assembled,  
except casters



**NAP-86-WHT**  
Mobil FF Ped  
14"x22"x27H"  
CU:6.78 WT:71  
**List Price: \$790**  
Ships Assembled,  
except casters

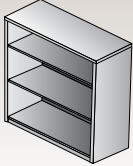


**NAP-76-WHT**  
Hanging Ped-20" Return  
15.5"x18.5"x21"  
CU:4.85 WT:51  
**List Price: \$485**  
Ships Assembled  
Use with NAP46

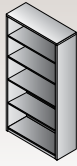


**NAP-80-WHT**  
Hanging BF Ped  
15.5"x22"x21"  
CU:5.73 WT:61  
**List Price: \$485**  
Ships Assembled

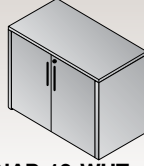
## STORAGE & FILING



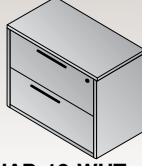
**NAP-55-WHT**  
3-Shelf Bookcase  
36"x14"x42"  
CU:4.45 WT:98  
**List Price: \$520**



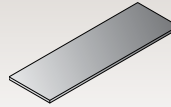
**NAP-56-WHT**  
5-Shelf Bookcase  
36"x14"x65"  
CU:6.83 WT:150  
**List Price: \$720**



**NAP-13-WHT**  
Storage Cabinet  
35.5"x22.25"x29"  
CU:5.02 WT:118  
**List Price: \$630**



**NAP-12-WHT**  
Lateral File  
36"x22"x29"  
CU:16.79 WT:150  
**List Price: \$1170**  
Ships Assembled



**NAP-T1213-WHT**  
NAP12/13 Combo  
Top  
71"x22.5"  
CU:1.59 WT:49  
**List Price: \$250**

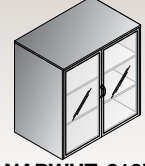


**NAP-152-WHT**  
Storage Cabinet  
22.5"x24"x65"  
CU:25.69 WT:179  
**List Price: \$1755**  
Ships Assembled



NEW

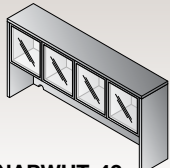
**NAP-156-WHT**  
65"H Storage Cabinet  
with 5 Shelves  
36"x22.5"x65"  
CU:10.3 WT:236  
**List Price: \$1795**



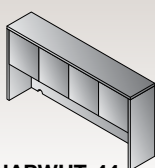
**NAPWHT-212DG**  
37"H Storage Cabinet  
w/Glass/Alum. Doors  
36"x22"x37"  
CU:5.7 WT:155.4  
Consists of: NAP-212H,2DG  
**List Price: \$990**

Use Free-standing or with NAP12

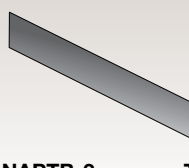
## HUTCHES



**NAPWHT-42**  
Overhead with Glass  
Doors  
71"x15"x36"  
CU:6.5 WT:136  
Consists of:  
NAP-44H,4DG  
**List Price: \$900**

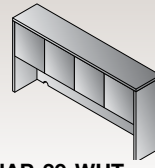


**NAPWHT-44**  
Overhead Storage  
71"x15"x36"  
CU:5.98 WT:140  
Consists of:  
NAP-44H,4DW  
**List Price: \$815**

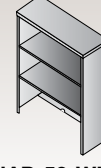


**NAPT B-3**  
Tackboard for NAP42/44  
SON44, KEN42/44  
65"x17.5"  
Black Fabric  
CU:1.12 WT:15  
**List Price: \$210**

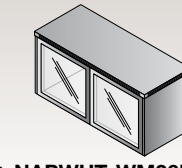
**Tackboard**  
Custom Fabric  
NAPT B-\_\_\_\_\_  
(Specify Fabric)  
**Grade A \$270**  
**Grade B \$305**  
**Grade C \$340**  
**Grade R \$375**



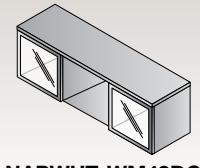
**NAP-39-WHT**  
Overhead Storage  
66"x15"x36"  
CU:7.2 WT:126  
**List Price: \$700**



**NAP-53-WHT**  
Open Hutch  
36"x14"x36"  
CU:3.86 WT:82  
**List Price: \$420**

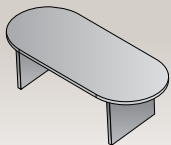


**NAPWHT-WM36DG**  
Wall-Mount Overhead  
with Glass Doors  
36"x15"x17"  
CU:2.2 WT:54  
Consists of:  
NAPWM36H,NAPWMDG  
**List Price: \$475**

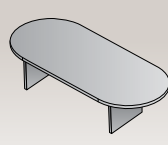


**NAPWHT-WM48DG**  
Wall-Mount Overhead  
with Glass Doors  
48"x15"x17"  
CU:2.7 WT:72  
Consists of:  
NAPWM48H,NAPWMDG  
**List Price: \$580**

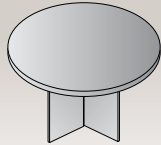
## CONFERENCE



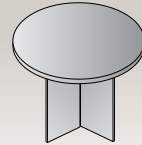
**NAP-35-WHT**  
Conference Table  
71"x35"x29"  
CU:6.67 WT:139  
**List Price: \$755**



**NAP-36-WHT**  
Conference Table  
95"x44"x29"  
CU:10.79 WT:190  
**List Price: \$1260**

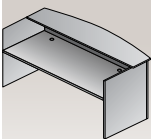


**NAP-23-WHT**  
Round Table  
47"Dia.x29"H  
CU:5.37 WT:109  
**List Price: \$745**

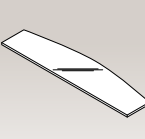


**NAP-27-WHT**  
Round Table  
42"Dia.x29"H  
CU:4.3 WT:95  
**List Price: \$640**

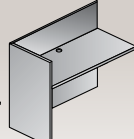
## RECEPTION



**NAP-122-WHT**  
Reception  
Desk Shell  
71"x35.75"/30"x41.5"  
CU:8.27 WT:207  
**List Price: \$930**



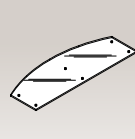
**NAP-123**  
Glass Floating Top  
Fits NAP122  
71"x17.5"x0.5"  
CU:1.92 WT:79  
**List Price: \$515**



**NAP-125-WHT**  
Reception  
Return Shell  
42"x24"x41"  
CU:4.13 WT:100  
**List Price: \$470**



**NAP-121-WHT**  
48" Reception  
Desk Shell  
48"x35.75"/30"x41.5"  
CU: 7.4 WT: 163  
**List Price: \$765**



**NAP-126**  
48"W Glass Top  
\*Fits NAP121ESP  
48"x17.5"x48"  
CU: 1.34 WT: 47  
**List Price: \$445**

Available in:  
ESP Espresso  
SGW Slate Grey



NAP-27-WHT table and NAP-56-WHT bookcase shown with 8840W-5 chair

## Napa Typical in White

NAPWHT- TYP1	NAPWHT- TYP8	NAPWHT- TYP19
TYP2	TYP9	TYP29G
TYP3	TYP11	TYP205
TYP4	TYP12	TYP206
TYP5	TYP13	TYP207

Typicals shown on pages 6-7.



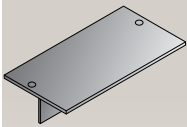
Urban Walnut

# NAPA

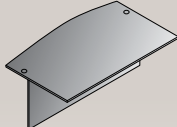
## STEPFRONT

URBAN WALNUT | SLATE GREY | ESPRESSO | CHERRY | MAHOGANY | PARK CITY | WHITE

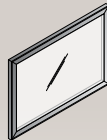
### STEPFRONT



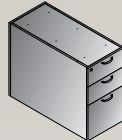
**NAP-201-xxx**  
Desk Top/Modesty Set  
71"x36"x29"  
CU:3.36 WT:90  
**List Price: \$495**



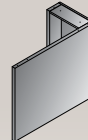
**NAP-289-xxx**  
Bow Top/Modesty Set  
71"x40"x29"  
CU:3.88 WT:95  
**List Price: \$535**



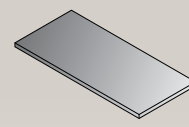
**NAP-200**  
Glass Modesty Panel  
for NAP201 & 289 Desk  
40"x28"x1"  
CU:1.82 WT:35  
**List Price: \$230**



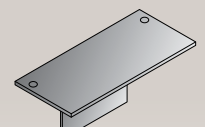
**NAP-265-xxx**  
36" Deep Desk Pedestal  
Box/Box/File  
15.5"x35.3"x28"  
CU:11.5 WT:90  
**List Price: \$880**  
*Ships Assembled*



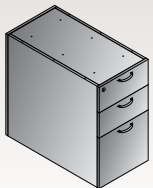
**NAP-271-xxx**  
36" Deep  
False Pedestal  
15.5"x35.3"x28"  
CU:4.63 WT:40  
**List Price: \$360**



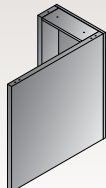
**NAP-T265-xxx**  
Top for NAP265  
Pedestal (2-Pack)  
15.6"x35.4"x1.1"  
CU:1.01 WT:18  
**List Price: \$175**  
*Not Available in PCW,  
SGW or URB*



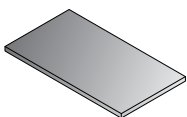
**NAP-202-xxx**  
Desk Top/Modesty Set  
66"x30"x29"  
CU:2.66 WT:73  
**List Price: \$420**



**NAP-263-xxx**  
30" Deep Pedestal  
Box/Box/File  
15.5"x29.8"x28"  
CU:9.86 WT:86  
**List Price: \$765**  
*Ships Assembled*



**NAP-267-xxx**  
30" Deep  
False Pedestal  
15.5"x29.8"x28"  
CU:3.95 WT:90  
**List Price: \$335**

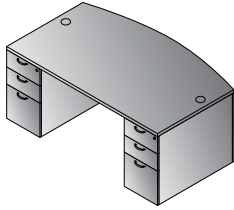


**NAP-T263-xxx**  
Top for NAP263  
Pedestal (2-Pack)  
15.6"x30"x1.1"  
CU:0.86 WT:15  
**List Price: \$150**  
*Not Available in  
PCW, SGW or URB*

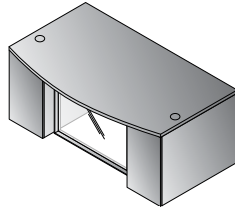


Espresso

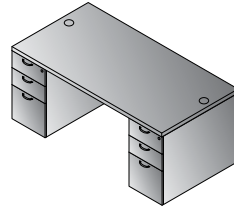
# STEPFRONT TYPICALS



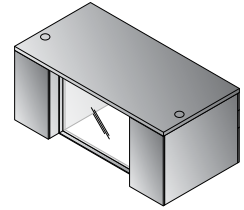
Bow Top Desk 71" x 40"  
**NAPxxx-TYP201**  
 24.6 cu. ft. 275.6 lbs.  
 Consists of: NAP-289,265 (2qty.)  
**\$2,295**



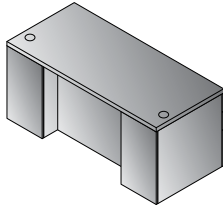
Bow Top Desk w/Glass Modesty Panel 71" x 40"  
**NAPxxx-TYP201G**  
 25.8 cu. ft. 310.9 lbs.  
 Consists of: NAP-289,200,265 (2qty.)  
**\$2,525**



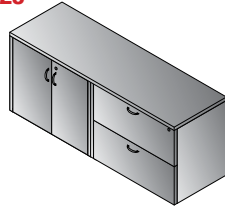
Double Pedestal Desk 71" x 36"  
**NAPxxx-TYP202**  
 24 cu. ft. 271.2 lbs.  
 Consists of: NAP-201,265 (2qty.)  
**\$2,255**



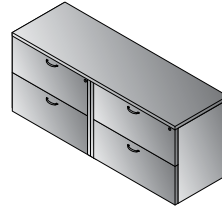
Double Pedestal Desk w/Glass Modesty Panel 71" x 36"  
**NAPxxx-TYP202G**  
 25.3 cu. ft. 306.4 lbs.  
 Consists of: NAP-201,200,265 (2qty.)  
**\$2,485**



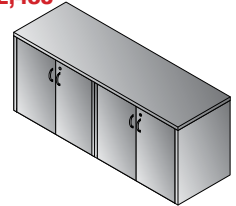
Double Pedestal Desk 66" x 30"  
**NAPxxx-TYP203**  
 20.3 cu. ft. 244.7 lbs.  
 Consists of: NAP-202,263 (2qty.)  
**\$1,950**



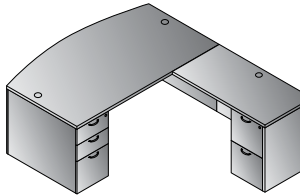
Combo Credenza 71" x 23"  
**NAPxxx-TYP205**  
 21.5 cu. ft. 316.4 lbs.  
 Consists of: NAP-T1213,12,13  
**\$2,050**



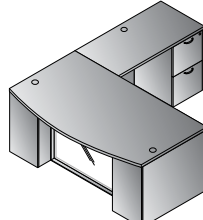
Double Lateral File Credenza 71" x 23"  
**NAPxxx-TYP206**  
 32 cu. ft. 348.3 lbs.  
 Consists of: NAP-T1213,12 (2qty.)  
**\$2,590**



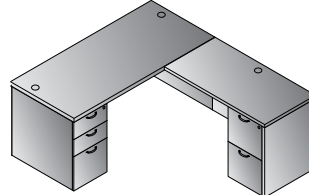
4-Door Storage Credenza 71" x 23"  
**NAPxxx-TYP207**  
 10.9 cu. ft. 284.5 lbs.  
 Consists of: NAP-T1213,13 (2qty.)  
**\$1,510**



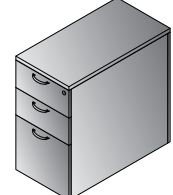
L-Shape w/Bow Top Desk 71" x 88"  
**NAPxxx-TYP208**  
 29.7 cu. ft. 389.2 lbs.  
 Consists of: NAP-289,265,271,45,74  
**\$2,845**



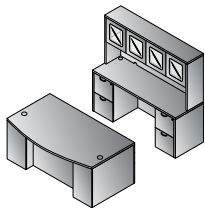
L-Shape w/Bow Top Desk and Glass Modesty Panel 71" x 88"  
**NAPxxx-TYP208G**  
 30.9 cu. ft. 420.1 lbs.  
 Consists of: NAP-289,200,265,271,45,74  
**\$3,075**



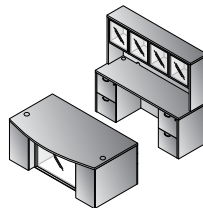
L-Shape 66" x 78"  
**NAPxxx-TYP209**  
 26.2 cu. ft. 358.3 lbs.  
 Consists of: NAP-202,263,267,45,74  
**\$2,590**



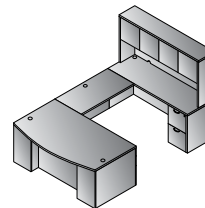
30" D Freestanding Pedestal  
**NAPxxx-TYP263**  
 9.6 cu. ft. 101.4 lbs.  
 Consists of: NAP-263,T263  
**\$915**  
 Not Available in PCW, SGW or URB



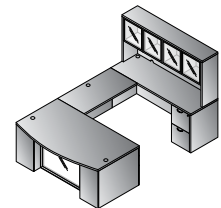
Executive Office  
**NAPxxx-TYP211**  
 49.5 cu. ft. 684.6 lbs.  
 Consists of: NAP-289,265 (2qty.)  
 43,74, (2qty.),41  
 NAPxxx-41 consists of: NAP-44H,4DC  
**\$4,995**



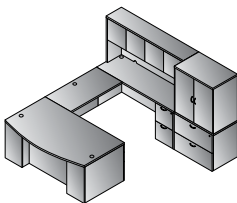
Executive Office w/Glass Modesty Panel  
**NAPxxx-TYP211G**  
 51 cu. ft. 719.9 lbs.  
 Consists of: NAP-289,200,265 (2qty.)  
 43,74, (2qty.),42  
 NAPxxx-42 consists of: NAP-44H,4DG  
**\$5,225**



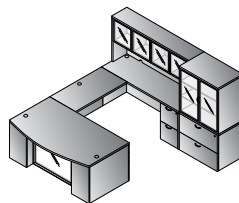
U-Shape with Hutch 71" x 112"  
**NAPxxx-TYP212**  
 40 cu. ft. 631.8 lbs.  
 Consists of: NAP-289,265,271  
 70,43,74,44  
 NAPxxx-44 consists of: NAP-44H,4DW  
**\$4,200**



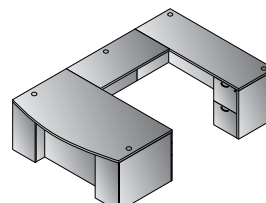
U-Shape w/Hutch & Glass Modesty Panel 71" x 112"  
**NAPxxx-TYP212G**  
 41.5 cu. ft. 662.7 lbs.  
 Consists of: NAP-289,200,265,271,  
 70,43,74,42  
 NAPxxx-42 consists of: NAP44H,4DG  
**\$4,430**



U-Shape w/Hutch + File Storage 107" x 112"  
**NAPxxx-TYP213**  
 61 cu. ft. 936.1 lbs.  
 Consists of: NAP-289,265,271,70,43,  
 74,44,12,212DW  
 NAPxxx-44 consists of: NAP-44H,4DW  
 NAPxxx-212DW consists of: NAP-212H,2DW  
**\$6,270**



U-Shape w/Hutch + File Storage & Glass Modesty Panel 107" x 112"  
**NAPxxx-TYP213G**  
 62.7 cu. ft. 968 lbs.  
 Consists of: NAP-289,200,265,271  
 70,43,74,42,12,212DG  
 NAPxxx-42 consists of: NAP-44H,4DG  
 NAPxxx-212DG consists of: NAP-212H,2DG  
**\$6,590**



U-Shape 71" x 112"  
**NAPxxx-TYP222**  
 34.0 cu. ft. 491.8 lbs.  
 Consists of: NAP-289,265,271,70,43,74  
**\$3,300**

**StepFront**

ESP - Espresso  
 SGW - Slate Grey  
 URB - Urban Walnut  
new PCW - Park City

**New Jersey Only:**  
 CHY - Cherry  
 MAH - Mahogany



# NAPA

## WOOD CHAIRS



**NAP97**  
NAPA Chair  
with Full Cushion Back  
23W x 23.75D x 32.75H  
Black Bonded Leather (-EC3)  
*Available in Cherry, Espresso, Mahogany,  
Slate Grey and Urban Walnut*



**NAP95**  
NAPA Chair  
with Upholstered Back  
22.5W x 22D x 31H  
Black Bonded Leather (-EC3)  
*Available in  
Espresso and Mahogany*



**NAP91**  
NAPA Chair  
with Wood Back  
22.75W x 22.75D x 31.5H  
Black Fabric (-3)  
*Available in Espresso and Slate Grey*



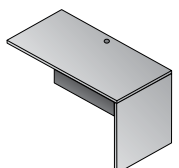
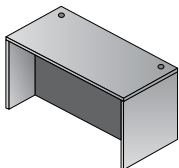
NAP97 in custom Dillon Snow -R101 antimicrobial upholstery



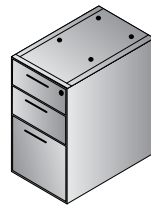
## NAPA MAPLE IN STOCK NEW JERSEY ONLY



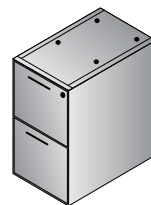
**Desk Shells**  
NAP01 71"x36"..... **\$685**  
NAP02 66"x30" .... **\$560**  
NAP03 60"x30" .... **\$535**  
NAP21 48"x30"..... **\$515**  
NAP89 71"x41"  
Bow Front ..... **\$805**



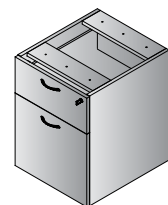
**Returns**  
NAP45 48"x24".... **\$440**  
NAP96 42"x24"..... **\$415**  
NAP46 42"x20" .... **\$385**  
\*\* Use NAP76 Pedestal



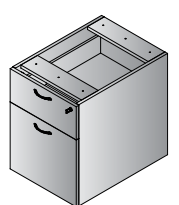
**NAP65**  
BBF Ped  
**\$630**



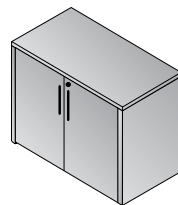
**NAP74**  
FF Ped  
**\$630**



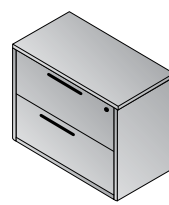
**NAP76**  
Hanging  
Ped-20" Return  
**\$485**  
Use with NAP46



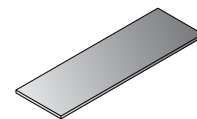
**NAP80**  
Hanging BF Ped  
**\$485**



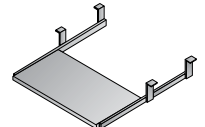
**NAP13**  
Storage  
Cabinet  
**\$630**



**NAP12**  
Lateral File  
**\$1170**



**NAPT1213**  
NAP12/13  
Combo Top  
**\$250**



**NAP14**  
Keyboard Tray  
**\$90**