



# Legacies in leather

**Custom Leather Jackets, Vests & Accessories**

**Decide on Your Style • Determine Your Size • Dictate *Your Swag***

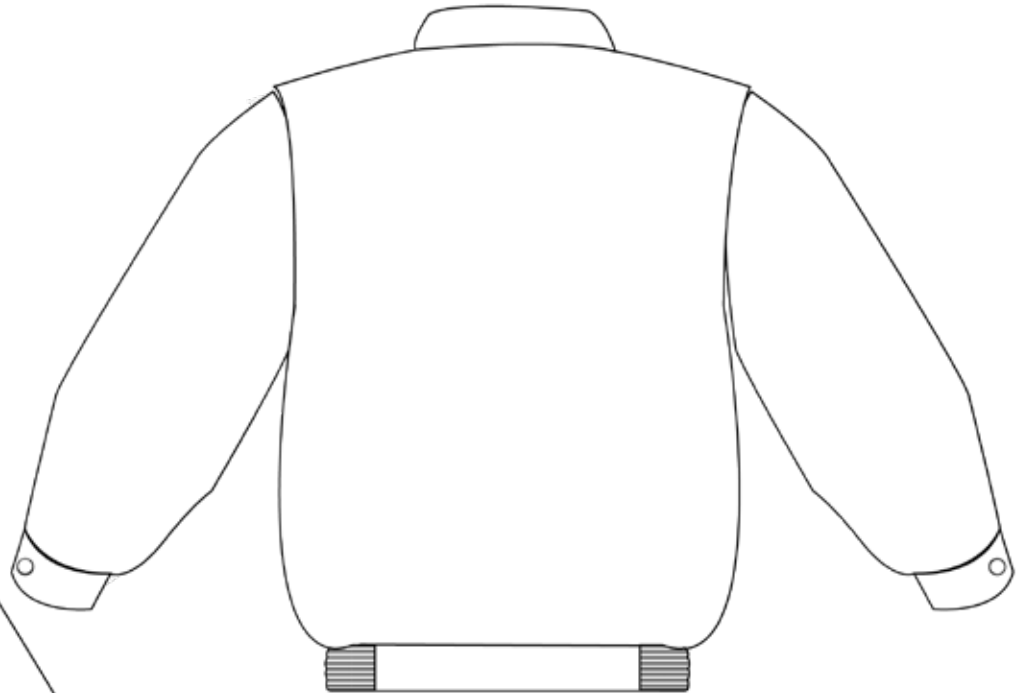
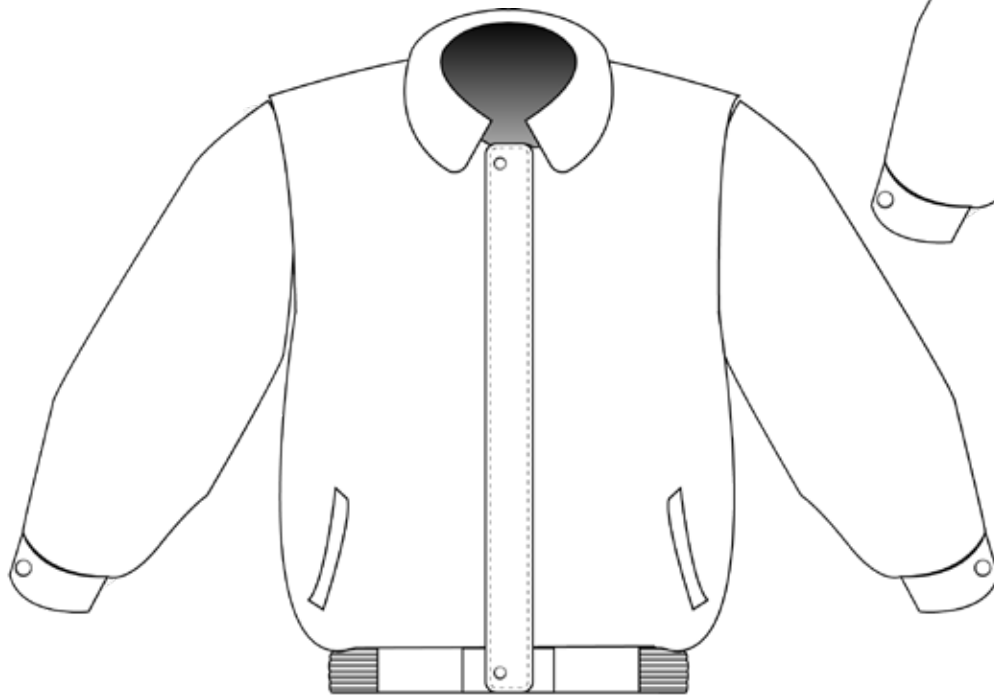
# Decide on Your Style

## Men's Basic Leather Jacket

This style features a front placket over a full zipper front, fold over collar, waistband with elasticized sides and cuffed sleeves with a single snap.

Artwork on the jacket can be placed on the back, front and left sides of the front and the sleeves.

Base Cost: S - 4X \$399.00      5X -10X \$449

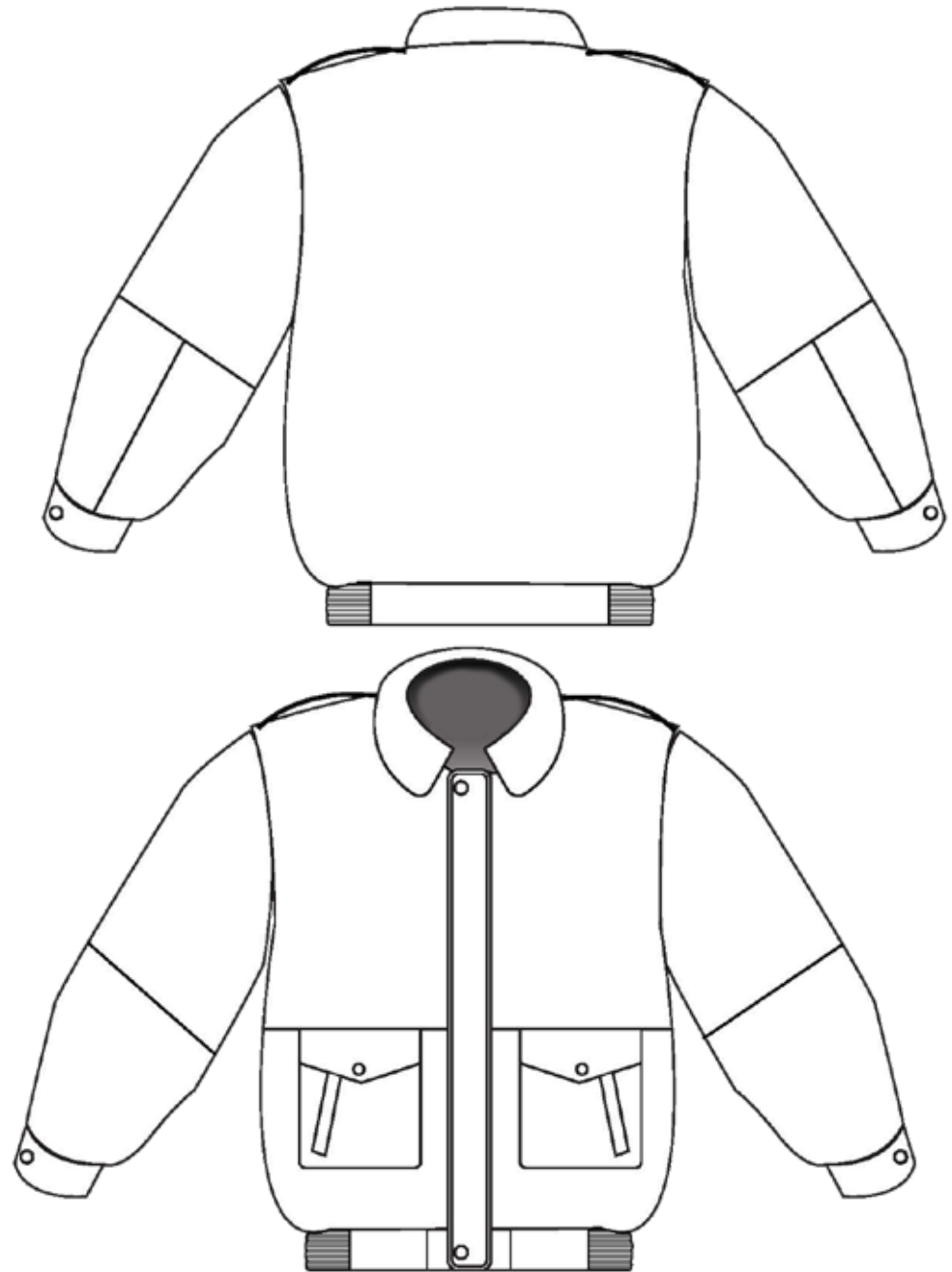


## Men's Traditional Bomber

This style features a front packet with a hidden zipper front, fold over collar, waistband with elasticized sides and cuffed sleeves with a single snap. It also features flap pockets with side entry and shoulder straps.

Artwork on the jacket can be placed on the back, front and left sides of the front, and the sleeves.

Base Cost: S - 4X \$399.00      5X -10X \$449

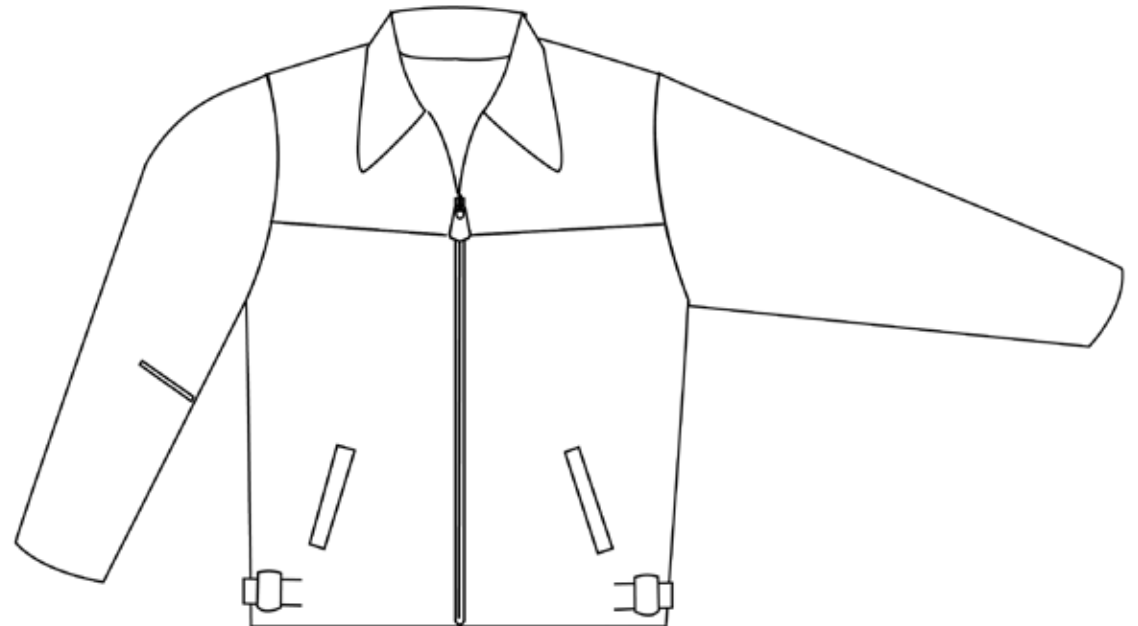


## Men's Retro

This style features front and back yokes, front zip, fold-over collar and front vertical welt pockets. It has adjustable straps at the sides of the waistline.

The back area below the yoke and above the yoke are suitable for any artwork. Artwork can also go on the sleeves and right and left front.

Base Cost: S - 4X \$399.00      5X -10X \$449

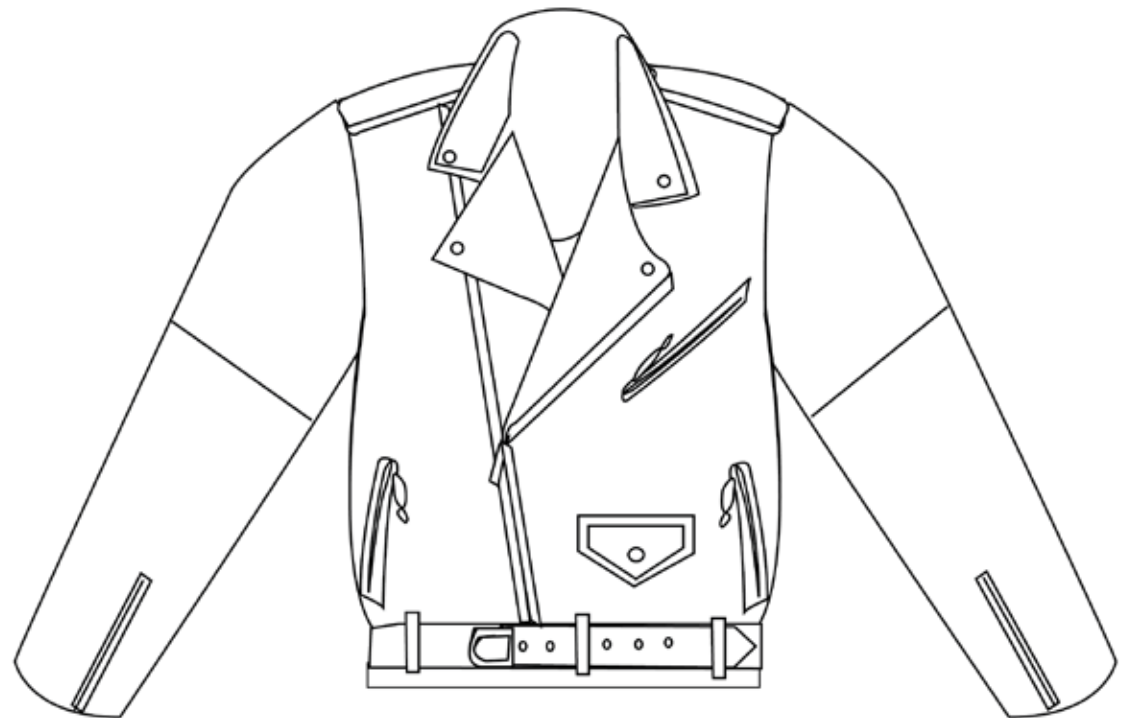


## Men and Women's Traditional Biker

This style features a front asymmetrical zipper front with fold over collar and lapel, zippers at the sleeve, zipped welt pockets on the chest and sides and a belted front. Artwork can be placed on the sleeves and back.

Base Cost:

Men's -	S - 4X \$399.00	5XL - 10XL \$449
Women's -	2XS - XL \$399.00	2XL - 5XL - \$449



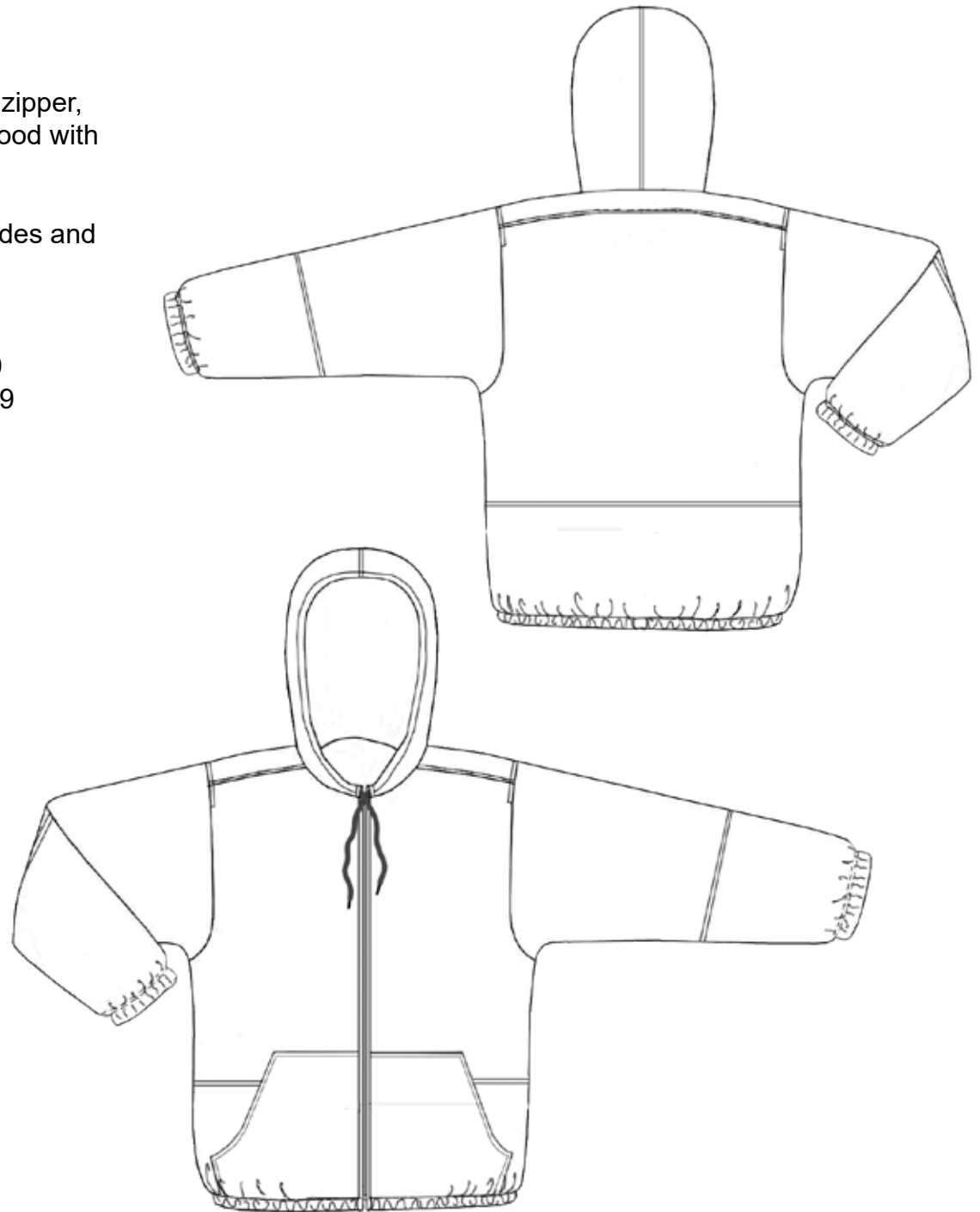
## Unisex Urban Hoodie

This popular hoodie style jacket features a full front zipper, front pockets, elastisized cuffs and hemline and a hood with a drawstring to bring it tight around the face.

Artwork can go on the sleeves, right and left front sides and back.

Base Cost:

Men's -	S - 4X \$369.00	5XL - 10XL \$429
Women's -	2XS - XL \$369.00	2XL - 5XL - \$429

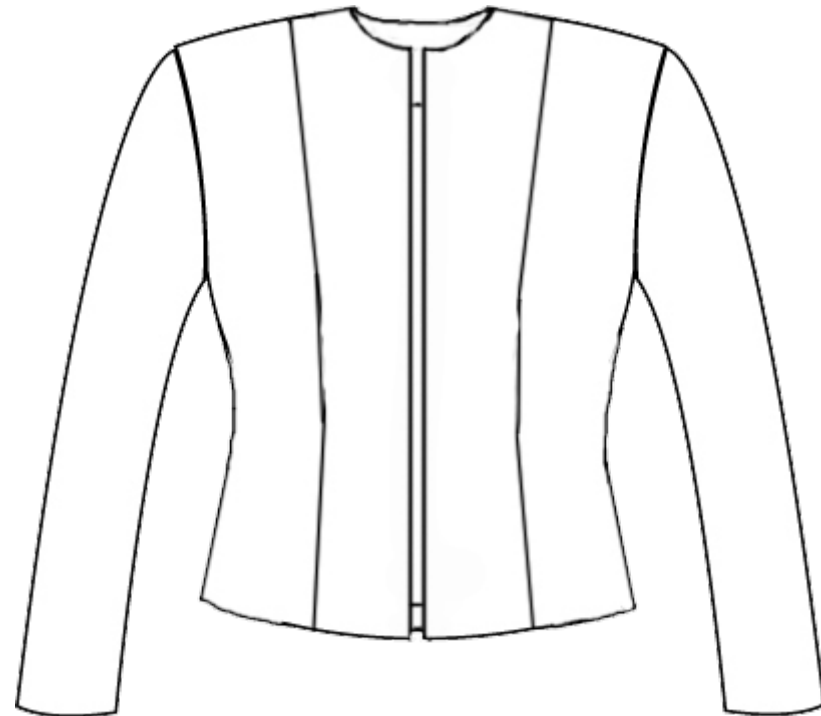
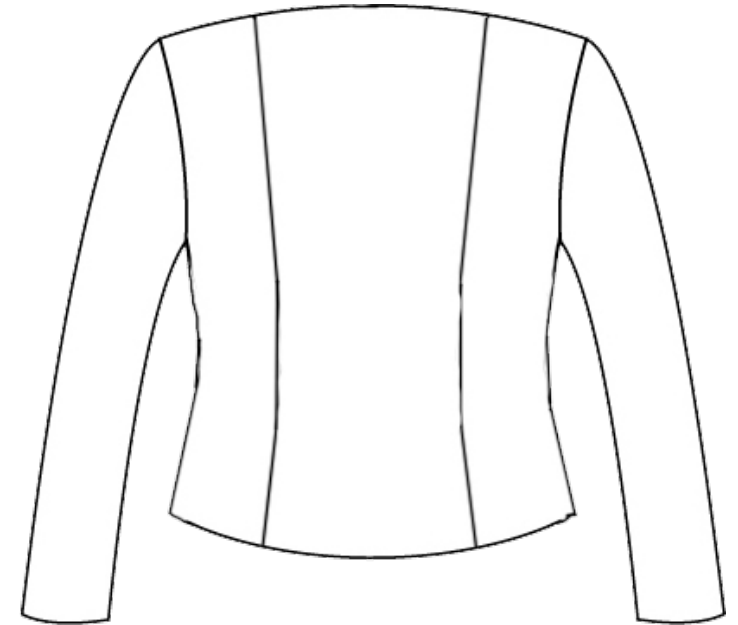


## Women's Fitted Jacket

The "Confections" leather jacket for women is made from 100% lamb leather with a poly satin lining. It features princess seaming for a contoured fit and gives you styling options. It can be made with or without a collar, with an open or zip front, and with horizontal or vertical pockets, or none. It also has an inside pocket for your cell phone.

Artwork can go on the sleeves, right and left front sides and back.

Base Cost: 2XS - XL \$349.00      2XL - 5XL \$399



## Men's Classic Vest

This classic leather vest features front welt pockets, button front and an adjustable strap in the back. Artwork can be added to the left or right chest and the back.

Base Cost: S - 4X \$199.00      5X -10X \$249

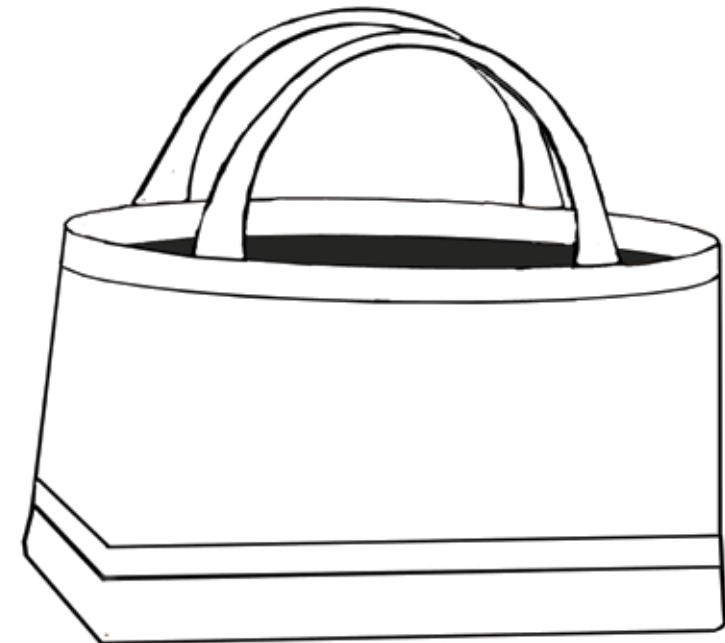
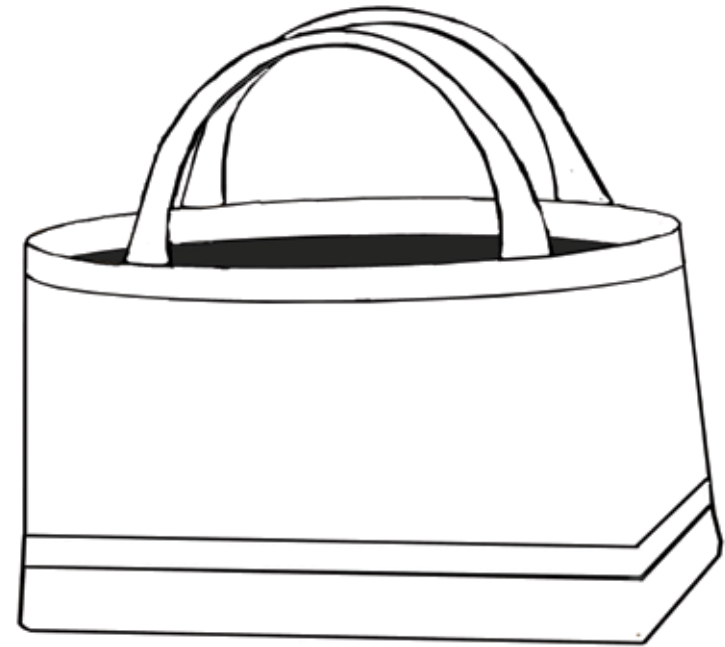




## Women's Tote Bag

This roomy tote bag measures 18" wide, 15" tall and 7" inches deep. It has metal feet to protect the bottom of the bag and can be made with or without a zipper at the opening. The entire bag can be one color or you can use different colors for the bottom, bands and straps and body. Add your artwork in either Inlaid or embossed leather to the front or back of the bag.

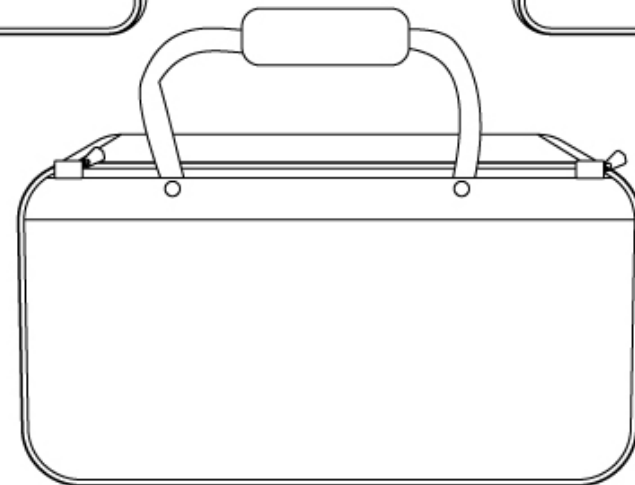
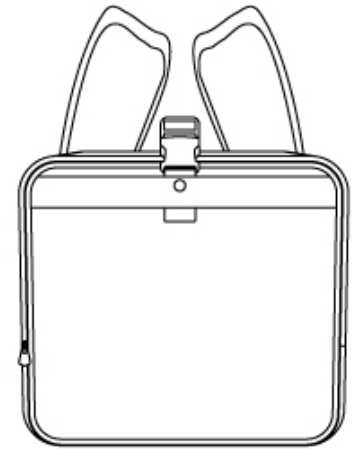
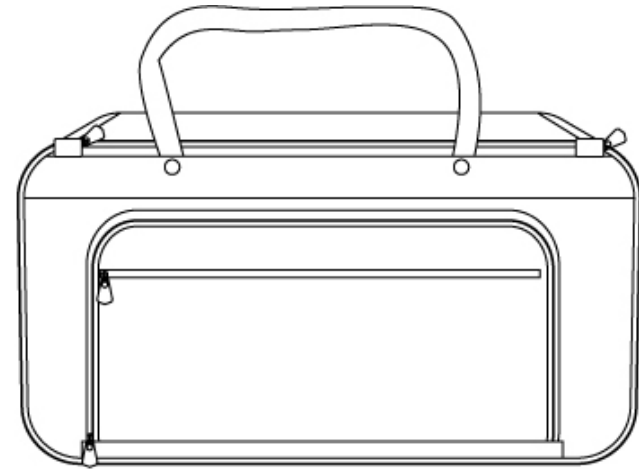
Base Cost: \$279



## Classic Duffel Bag

This roomy duffel bag features a front zipped pocket and side zipped compartments. It has a comfortable shoulder strap, as well as a shoulder strap. Artwork can be added uses either inlaid or embossed leather. to the front, back or sides of the bag.

Base Cost: \$379

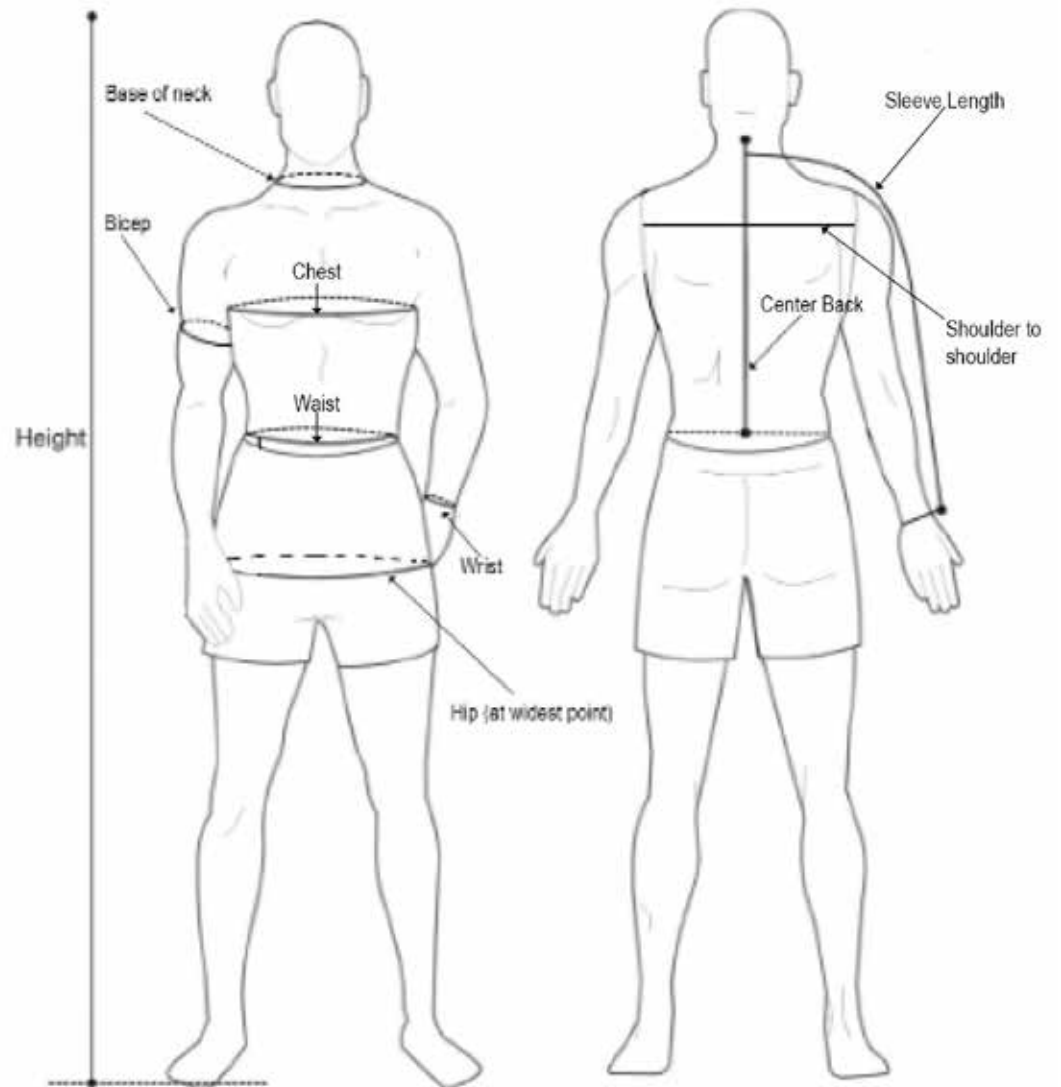


# Determine Your Size

## For Men

You will need to take a few measurements. Select the size that best fits your measurements in the neck, chest and waist. We ask you to also provide your height, and a few additional measurements so that we can tweak your pattern for a better fit.

	Neck	Chest	Waist
S	14-14 ½	34-36	30-32
M	15-15 ½	38-40	34-36
L	16-16½	42-44	38-40
XL	17-17½	46-48	42-44
2XL	18-18½	50-52	46-48
3XL	19-19½	54-56	50-52
4XL	20-20½	58-60	54-56
5XL	21-21½	62-64	58-60
6XL	22-22½	66-68	62-64
7XL	23-23½	70-72	66-68
8XL	24-24½	74-76	70-72
9XL	25-25½	78-80	74-76
10XL	26-26½	82-84	78-80

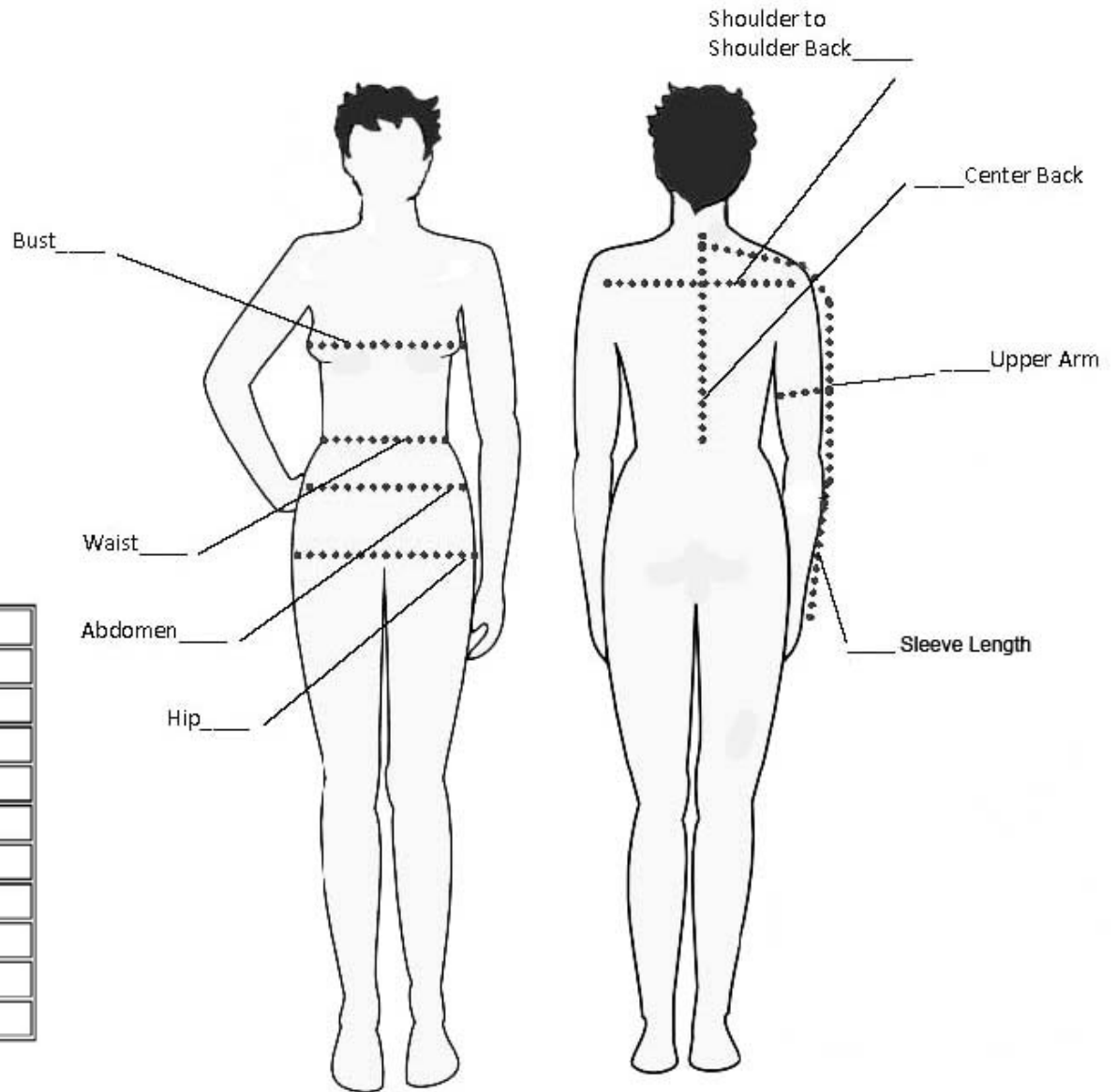


# Determine Your Size

## For Women

You will need to take a few measurements. Select the size that best fits your measurements in the neck, bust and waist. We ask you to also provide your height, and a few additional measurements so that we can tweak your pattern for a better fit.

	Bust	Waist	Hip
2XS	30 ½	23	32 ½
XS	31 ½	24	33 ½
S	32 ½ - 34	25 - 26 ½	34 ½ - 36
M	36 - 38	26 ½ - 28	36 - 38
L	38 - 40	30 - 32	40 - 42
XL	42	35	44
2XL	44 - 46	37 - 39	46 - 48
3XL	48 - 50	41 ½ - 44	50 - 52
4XL	52 - 54	46 ½ - 48	54 - 56
5XL	56 - 58	50 - 52	58 - 60



# Dictate Your Swag

You can customize your jacket with your name, logos, school emblems, etc. Whether showing your spirit, promoting your brand, or sending your message - you can Dictate Your Swag!

We offer two different methods of adding images: inlaid leather and embossed leather. Either can be used, however, embossing requires the creation of a die and the cost can be significant based on the size. This is best used by organizations that wish to order several items using the same artwork so that the cost is distributed among the members.

Inlaid leather patterns are most commonly used and can be used to create intricate patterns using several colors. The style of the coat or jacket dictates where artwork can be placed. We will send a color mock-up of your design idea and will do up to four revisions to reach a design you love and will approve for production. Final costs are determined based on the number and size of images on your garment.

Also, artwork is totally optional. You can order a coat or jacket without any embellishments at all.





## Color Options

The sixteen colors we regularly have available are displayed below. However, we are able to do custom colors for additional fees. Custom colors fees are waived for groups ordering 10 jackets or more using the custom color.



## Leather

We use a Lamb Nappa leather for the creation of our coats and jackets. At the customer's request, we can also use heavier Cow Nappa leather, although the full range of colors will not be available.

Nappa leather is full grain leather which has been tanned using a specialist chemical process. The resulting leather retains the beauty of the original hide but is extremely soft and flexible and does not crease.



# Order Process

Our Custom Leather Coats & Jackets can not be ordered online through our website. The process requires more direct interaction between us and the customer. Call us at 901.290.2296 or email us at [legaciesinleather@mgballarddesigns.com](mailto:legaciesinleather@mgballarddesigns.com) to get started. If you are placing an order as a member of an organization using our products to raise funds, please see your organizational representative.

1. The first thing you do is **decide on your style**. We offer 5 popular jacket styles and a vest.
2. Next you will need to take a few measurements to **determine your size**. Use the chart supplied and select the size closest to your body measurements. If you are between two sizes, order the larger of the two. The neck, chest and waist sizes are the only sizes reflected on the chart. The other measurements help us to tweak the pattern a bit to give you a better fit. These customized jackets are not returnable; therefore, determining your size is an important part of the process. If you need assistance with determining your size, we can walk you through the process on a courtesy Zoom Virtual Fitting Session. To schedule an appointment for a session, Email us: [legaciesinleather@mgballarddesigns.com](mailto:legaciesinleather@mgballarddesigns.com) or call us: **901.290.2296**. You can also schedule a fitting session with an Authorized Dealer if one is in your area.
3. Next, you will **dictate your swag** by adding the items to your jacket that are personal to you. Your company logo, your school or organization emblem, your name or nickname, a strong sentiment - whatever you want.\* Use the drawing on the page with your selected style of jacket to roughly indicate where you would like your embellishment. If the artwork you want to be added is a logo, seal, etc. of your business, organization, etc., you will need to email us a full color high resolution copy of the artwork as a JPEG or PNG file.

At that time, you will also pay a deposit equal to the base price of your coat or jacket (your selected jacket in your size without any artwork). We will invoice you for the deposit. You are entitled to a full refund of the deposit if you cancel the order within 48 hours. Please note that the base cost of the garment is non-refundable after we begin the process of developing the mock-ups. After the mock-ups are complete, should you decide not to proceed, you have the option of receiving the basic jacket without the artwork. Final costs are based on the number and dimensions of the artwork, and time spent developing any custom artwork.

4. We prepare and send you a full color mock-up of your design. We will also do up to four revisions to reach a design you love and will approve for production. Once you approve of the design you will be invoiced for the total amount (including shipping) with credit showing for your deposit. Once the balance is paid, we will start production on your piece. Please allow 6-8 weeks for completion. We offer the options of using PayPal credit to pay for your garment. With PayPal credit you get six months to pay interest free. We also the option through PayPal to pay for your item in four equal monthly installments (credit approval is required).

*\*Please note: We cannot use images that are copyrighted or licensed without the express written permission of the person or entitie owning the rights to the images.*



# Order Form

Name: \_\_\_\_\_ Address: \_\_\_\_\_

Email: \_\_\_\_\_ Phone: \_\_\_\_\_

Jacket Style: \_\_\_\_\_ Base Color: \_\_\_\_\_

Jacket Size for Men (Circle one): **S M L XL 2XL 3XL 4XL 5XL 6XL 7XL 8XL 9XL 10XL**

Height: \_\_\_\_\_ Base of Neck: \_\_\_\_\_ Chest: \_\_\_\_\_ Waist: \_\_\_\_\_ Bicep: \_\_\_\_\_ Shoulder to Shoulder: \_\_\_\_\_

Center Back: \_\_\_\_\_ Sleeve Length: \_\_\_\_\_

Jacket Size for Women (Circle one): **2XS XS S M L XL 2XL 3XL 4XL 5XL**

Height: \_\_\_\_\_ Bust: \_\_\_\_\_ Waist: \_\_\_\_\_ Abdomen: \_\_\_\_\_ Upper Arm: \_\_\_\_\_ Shoulder to Shoulder: \_\_\_\_\_

Center Back: \_\_\_\_\_ Sleeve Length: \_\_\_\_\_

Organization (if applicable): \_\_\_\_\_

**Email this form, your artwork (high resolution JPEG or PNG images) and the page containing the rough rendering of your design to [legaciesinleather@mgbalarddesigns.com](mailto:legaciesinleather@mgbalarddesigns.com).**