



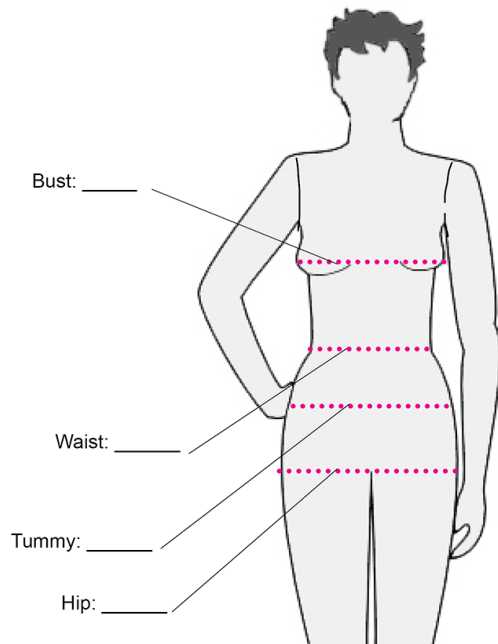
# Fitting, Style and Color Guide

## How to Find Your Fit

Garments in the collection are ordered by Fit Number (1-7) rather than by size, and the basic dress in the collection is the core garment used to determine which Fit Number a customer wears. This guide shows you how to find your fit in our basic dress. It also contains your style and color options.

### **Know Your Fit Preference**

Only you know how you want your garments to fit. The first step is knowing if you prefer that your knit garments hug the body, skim your body or fit loosely over your body. However, once you know that, you can use your body measurements to determine your Fit Number and the best Silhouette for your body type.



### **Take Your Body Measurements**

Take your body measurements at the bust, waist and hip. We also recommend taking them at the tummy because that measurement may actually be larger than the hip. Once you have your actual measurements in hand, use the chart below determine the FIT number and silhouette to order.

Approx. Sizes	XS/S	S/M	M/L	L/XL	XL/2X	2X/3X	3X/4X
Approx. Sizes	0-6	6-10	10-14	14-16	18/22	22/24	24/26
Silhouettes		Fit Numbers					
Contoured	1	2	3	4	5	6	7
Bust	32-36	34-38	36-40	38-42	44-48	50-54	54-58
Waist	28-32	30-34	32-36	36-40	42-46	48-52	52-56
Hip	34-38	36-40	40-44	44-48	50-54	54-58	58-62
Straight	1	2	3	4	5	6	7
Bust	34-38	36-40	40-44	44-48	50-54	54-58	58-62
Waist	34-38	36-40	40-44	44-48	50-54	54-58	58-62
Hip	34-38	36-40	40-44	44-48	50-54	54-58	58-62

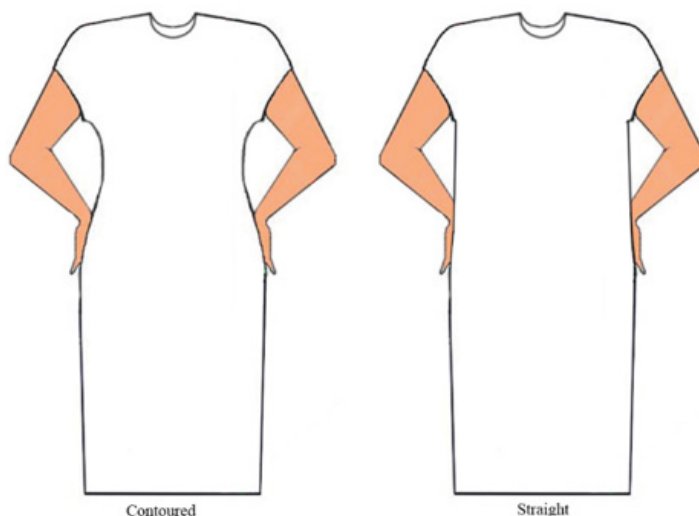
The Fit Number you select will be based on how you want your garment to fit. Because the garments are knits, they will stretch over the body. With each Fit Number there is an associated range of measurements given for the bust, waist and hips. Each range of measurements starts with the actual measurement of

the garment without it being stretched. The dress will stretch approximately 4” beyond the actual measurement of the garment.

*The chart above also gives associated ranges of approximate letter and numerical sizes. Sizing standards today are as varied as the manufacturers who use them. So, use this **only** as a method of giving you a general idea of where to start.*

### **Determine Your Best Silhouette**

We offer two silhouettes in our basic dress, a contoured silhouette that will allow a closer fit in the waist for those whose waistlines are proportionally smaller than their bust and hips; and a straight cut silhouette for those whose waistline measurements are more in line with their bust and hip. The straight silhouette is also better suited for those who simply prefer more room in the waistline.



### **The Fit in the Other Items**

With the exception of scarves and other accessories and our one-size -fit-all garments, the sizing of our garments are all developed around the fit of the dress. The tops and tunics are developed with the same base patterns and carry the same fit. Coats and jackets are designed to be worn over the dress and have additional wearing ease built in.

# Your Style Options

## Neckline



Jewel



Scoop



Boat



Soft V

## Sleeve Length



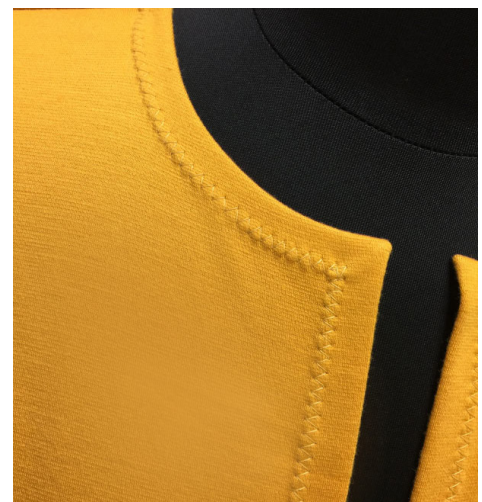
Cap



3/4



Long



Jewel Neckline  
(for Cardigan Jacket & Coat)

## Sleeve Design



Tapered



Wide



Curved Neckline  
(for Cardigan Jacket & Coat)

# Your Color Options

Colors options are on the chart below. WWe introduce new colors periodically and occasionally discontinue colors. Please check back on our site to see if new colors are available, or join our mailing list to be notified of new colors and new product offering, etc.

## Essential Elements Collection Colors



VANILLA



BLACK



CHARCOAL



HEATHER GRAY



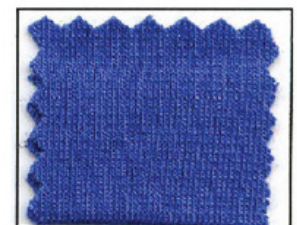
JAVA



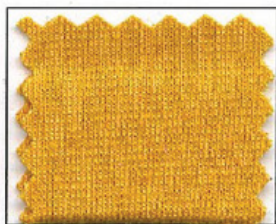
HOT SAUCE



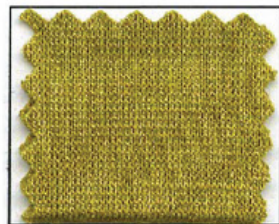
SCARLET



SAPPHIRE



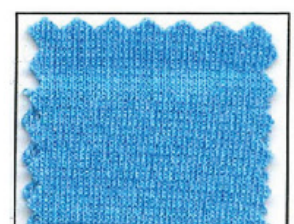
GOLDEN



SPANISH OLIVE



TERRAGON



TURQUOISE

## Your Information

Bust: \_\_\_\_\_ Waist: \_\_\_\_\_ Tummy: \_\_\_\_\_ Hips: \_\_\_\_\_

Fit Number: \_\_\_\_\_

Silhouette: Contoured  Straight

Notes: