

Eido Connect

29th
Year

Heart of
Eido Country

EMAILS: MOTT - eido@ndsupernet.com • BOWMAN - connect@ndsupernet.com

FREE Online at eidoconnect.com

Box 247 Mott, North Dakota 58646 • Box 97 Bowman, North Dakota 58623

Mott - 1-701-824-2605 or 1-888-522-2605 - Bowman 1-701-523-4577 or 1-866-523-4577

Mott FAX: 701-824-2927 - Bowman FAX: 701-523-4579

PRSRT STD.
US POSTAGE PAID
EIDO
ECR WSS
POSTAL CUSTOMER

Vol. 29 No. 5 - Saturday, November 26, 2022

Eido Connect's
Philosophy for 2022

- Choice -

“Secret”

Watch for these circulars in
your area for this week!

Buffalo Super Valu - Buffalo
Kennedy's Foods - Hettinger
Oien Grocery - Mott
Regent Co-op - Regent
R Family Market - Elgin
Scranton Super Valu - Scranton
Runnings - Baker
Runnings - Hettinger
ACE Hardware - Bowman
Buffalo Hardware - Buffalo
Buffalo Ranch - Buffalo



David and Elizabeth Jorda of Mott
Grandchildren of Frank Jorda and Ramona Swindler of Mott
And Frank and Sandy Fettig of Hettinger

Don't tell anyone - it's our secret- and the two friends, hugged, said their goodbyes and parted. As the big jet left the airport. Henry looked out the window, hoping to see his friend for one last time, waved good-bye and up up up the jet flew into the wild blue yonder.

Circling his home town, Henry could hear the engines slowing down, getting ready to land, he wondered what it would be like, would anyone be there to greet him, did they even remember him? Would he know anyone? Questions and years of being gone left him with feelings of remorse, anxiety, fear. Why he was coming back was a question, right now at this moment, he couldn't answer. Some would say coincidence, some would say - - guess it didn't matter right now for the Stewardess voice pulled him back to reality. Landing 10 minutes, seat belts secure and down, down, looking out the window he remembered, faintly, some of the houses.

Wiping away a tear he stepped out onto the platform, started descending - - band music, drums, cheering filled the air. Looking up banners filled the lot, people - Welcome home Henry - cheering. Tears pour out - people waving. Was he dreaming or was this real. Henry had no idea why but as he reached the bottom step a smiling cousin, Jenny reached out, grabbed his hand and the tears broke. Finally Henry was safely home. Had been years as a prisoner of war - due to a dumb decision he had made - - but now he was home.

Life had changed considerably since he were gone. Parents home tore down after they both died, Grandparents farm passed on to sibling, where to, where would he stay. Cousin Jenny offered her cabin in the woods, which he agreed for a short time



would serve his purpose. Now, standing at the doorway he waved goodbye to Jenn, sat in the big rocker, Grandpas, he thought - looked around, apples, fresh bread lay on the table in front of him - - his favorite - - how did Jenny remember - - they were teenagers when he left, promising her he would return - - but now twenty years later - seemed like a life time - - her promise when she dropped him off - - see you in the morning - been a long trip - rest well tonight - - and she was gone. He was alone rested his head against the back of the chair and - -.

Doorbell ringing woke him, “Henry, Henry,” Jenny called out as he didn't answer the door bell. “You okay?” “Must have dozed off - -.” was his reply

“Coffee?” “Okay,” and the two sat at the kitchen table. Henry began telling Jenny of his ordeal. She listened, question upon question but her biggest question - - “How did you ever live thru such an ordeal?”

“Secret,” said Henry - - it's a secret!”

Continued next week.

©S

EMAILS: MOTT - eido@ndsupernet.com • BOWMAN - connect@ndsupernet.com

FREE Online at eidoconnect.com

Eido Connect

the only place with **100%** coverage!!!!!!!!



Look for the Answer

Pain, pain, pain, how do I deal with all the pains of the world - of my life, my country what can I do? Answer is very evident from the writers this week. Funny how did they know, they would answer questions about our struggles and pains of the world when they wrote their stories this week. Read articles and you find the answer.

Call 824-2605
if you find the answer

**Bowman Theater**

28 S. Main Street
Bowman, ND
605-646-5433
bowmantheater@gmail.com

Black Adam
Rated: PG-13 • Run time: 2 hours 5 minutes
Nov. 25th - 28th
Friday • 7:30pm
Saturday • 2pm & 7:30pm
Sunday • 2pm
Monday • 6:30pm
Drop your kids off for some fun while you do some Christmas shopping on Small Business Saturday!
We will be hosting a Movie Theater themed cookie decorating event at 1pm on Saturday, Nov. 26th before the 2pm matinee. \$10 to decorate and attend the movie or \$5 to just come decorate cookies. Call/Text 605-646-5433 to RSVP
Upcoming Movies:
Black Panther: Wakanda Forever (12/2 & 12/9); Disney's Strange World (12/16 & 12/23); Puss in Boots: The Last Wish (12/30 & 1/6); A Man Called Otto (1/13); Avatar: The Way of Water (1/20 & 1/27)
Adults 13+: \$8.00
Youth & Seniors: \$6.00
Facebook icon
• Sunday: BYOB (bring your own bag)
• Now accepting Credit Cards

Eido
Connect
we're here
to help
you grow
your
business!
100%
Coverage!

**TOP 20 CRITICAL ACCESS HOSPITAL 2022**
Overall Winner

Family Is Everything
Join Our Family!

**WEST RIVER HEALTH SERVICES**
We're right where you need us.

**WESTERN HORIZONS LIVING CENTERS**

Find Careers at www.wrhs.com
Advanced Practice Professional PA-C or FNP-C • Human Resources Manager
Respiratory Therapist • Laboratory Manager • Executive Secretary
Licensed Clinical Social Worker • CRNA • Hettinger Clinic Receptionist
Financial Counselor • Certified Scrub Tech • Certified Nursing Assistant
Laundry Aide • Business Office Clerk • Hospital LPNs and RNs • Hospital Ward Clerk • EMT • Cooks • Patient Accounts Representative • Systems Support Specialist • Clinic LPNs and RNs • Dietary Aide • Activity Aide
Ambulance Drivers • Paramedic • Administrator for WHLC
Laboratory Medical Technologist • Ultrasound Tech
QA/Risk Manager • Radiology Technologist

COMPETITIVE WAGE AND BENEFITS
Apply Online
<https://www.wrhs.com>
Contact Christi
701-567-6207

Equal Opportunity and Affirmative Action Employer.

~Large Collectible Toy Auction~
Saturday, December 3, 2022 at 9:00 a.m. MST
Located: At the Big D&E ~ Ed Praus Auction in Dickinson, ND - 3/4 Mile South of the Loaf N' Jug on Hwy 22 South
THIS IS JUST A PARTIAL LISTING - THERE WILL BE MANY MORE TREASURES BY SALE TIME!!



Door Prizes will be drawn throughout the day, must be present to win!!
SELLING WILL BE:
APPROX. 700+ LOTS OF COLLECTIBLE TOYS & FARM TOYS INCLUDING:
1/8 - 1/12 - 1/16 - 1/18 - 1/24 - 1/32 - 1/43 - 1/50 - 1/64 Scale Toys of All Kinds
Consisting of:
• Ertl
• Spec Cast
• Precision
• Two Cylinder Club
• Gear Box
• Precision Classics
• Scale Models
• Farm Tractors (Several Hundred)
• Farm Implements
• Combines
• Construction
• Nascar
• Coin Banks (Airplanes,
• Cars & Trucks)
• Pedal Tractors
• Anniversary Toy Sets
• Skid Loaders
• Muscle Cars
• Semi's
• Grain Carts
• Dealer & Collector Edition

JOHN DEERE - CASE IH - CASE - FORD - FARMALL - CATERPILLAR - VERSATILE - ALLIS CHALMERS - MASSEY - STEIGER - MCCORMICK - WHITE - NEW HOLLAND - OLIVER - MINNEAPOLIS MOLINE & MANY MORE MAKES, MODELS & SCALES!!!

Visit our Website at www.bigd-eauction.com for Lots of Photos & More Details!!!

Sale Conducted By:
**Big D&E Auction Service**
Ed Praus
Big D&E~ Ed Praus Auction - Dickinson, ND
Auctioneers: Eddie Praus - Lic. #27 - 701-225-6131
Delvin Praus - Lic. #667 - 701-290-5081
Ed Praus Clerking Service - Lic. #27
Pat Praus Lic. #737

Ranchers,

Now is the time to call Bowman Grain to check out what we have for supplements to help you stretch your feed or increase the quality of your feed.

We have a complete line of Sunnyside Feed Liquid products from high protein products or products with added fat. Plus our 30% Bale Booster to help out on consumption of low quality feed.

- A complete line of Crystalyx products
- Full line of Vitaferm Barrels
- Cakes
- Soy Hull Pellets to replace hay
- Dry Distillers Grain



Bowman Grain
Bowman, ND
Call Bowman Grain for more information on any of these products:
701-523-3173 or 701-523-1395

**ProPoint COOPERATIVE**
Take & Bake PIZZA
Located at Bowman C-Store
Medium and Larges Available!
Plenty of flavors, stop and grab one!
701-523-3268

Pifer's AUCTION & REALTY
LEARN MORE AT PIFERS.COM

SALE PENDING  \$1,632,000 701 1st Ave W • Hettinger, ND	SALE PENDING  \$519,000 706 Mule Deer Ave. • Bowman, ND	 \$279,500 402 2nd Ave. SW • Bowman, ND
 \$239,800 402 4th St. SW • Bowman, ND	 \$180,000 407 4th St. SW • Bowman, ND	 \$177,000 208 West Divide • Bowman, ND
 \$160,000 204 6th Ave. NW • Bowman, ND	 \$159,900 606 Main St. N • Scranton, ND	 \$135,000 402 West Divide St. • Bowman, ND
 \$123,500 21 5th Ave. NW • Bowman, ND	 \$110,000 504 2nd Ave. NE • Belfield, ND	 \$87,500 408 Hamilton St. SW • Scranton, ND
 \$62,000 205 5th Ave. SW • Bowman, ND	 \$249,000 410 2nd Ave. SE • Bowman, ND	 \$180,000 103 Main St. North • Bowman, ND
 \$160,000 101 Hwy. #12 W • Bowman, ND	 \$70,000 14 Main St. N • Bowman, ND	 \$6,950,000 2,729.21 +/- Acres • Williams Co., ND
 \$420,200 19.1 +/- Acres • Bowman Co., ND	 CALL FOR PRICE Residential Lots • Bowman, ND	 CALL FOR PRICE Commercial Lots • Bowman, ND

Ali Pierce
701.206.1046
ali@pifers.com

Andy Mrnak
701.206.1095
andy@pifers.com

709 12th St. NE • Bowman, ND | www.pifers.com | Contact: 701.523.7366

Attitude is not just the way you think - it's the way you live

Christmas in Murray Park


Thursday, December 1st
5:30-7pm

Concessions served by the
Scranton Music students

- Horse Pulled Wagon Rides
- Pics with Santa
- Lighting of the Park
- Caroling & Games

*Join us in Scranton
Murray Park!*

Sponsored by: Scranton Lions,
City of Scranton & Pifer's Auction

 I try to take one day at a time, but
sometimes several days attack me at
once.

**Southwest Healthcare
Auxiliary
Bazaar is Back!**

December 3, 2022
9 am - 12 pm

Bake Sale • Lefse • Raffle
Coffee & Rolls

**Sunrise Village
(New Location)**

203 11th Ave NW • Bowman, ND

Faith
HOPE
AND LOVE
BUT THE GREATEST
OF ALL OF THESE IS
love

**Hettinger County
Health Maintenance**
Blood Pressure Clinics
Thursday, December 1
- New England - 11:00 am -
1:30 pm
Thursday, December 8
- Mott - 10:00 am - 12:00
Tuesday, December 13
- Regent - 11:00 am - 12:00

**Holiday
Fair**

Saturday, Dec 3, 2022
8:30 to 3:00

Elgin Community Center
Elgin, ND

For more information Contact Diane
@ 701-880-1045
If no answer Please leave a message

11-5,12,19,26

Marmarth Community Club Santa Claus Day

Saturday December 3 rd	Marmarth Community Center	10 O'clock to 2 O'clock
---	---------------------------------	-------------------------------

11 am • Kids Crafts & Games
1pm • Santa Arrives

Hayrides and Caroling following Santa

Chili & Cornbread (Free Will Offering)
Vendor Show 10am - 2pm
Prime Rib Raffle
Hot Chocolate Bar

**COME TO AN
OLD FASHIONED
CHRISTMAS PARTY**

**NEW LEIPZIG
COMMUNITY CENTER**

SUNDAY, DECEMBER 4TH, 2022

CRAFT AND BINGO 3:00 PM

TREE LIGHTING AND CAROLS 4:45 PM

FREE SUPPER AT 5:00 PM

FOLLOWED BY A VISIT FROM SANTA

11-26-12-3

RECOGNITION & AWARDS BANQUET

HONORING

New England Ambulance Service
New England Rural Fire Department
Amidon Fire Department
Hettinger County Sheriff's Department

Saturday, December 10th, 2022 6:00 pm
Cash Bar / Dinner / Fellowship / Memories
New England Memorial Hall

Advance Tickets Recommended \$15

Limited Seating

Reserve / Confirm ¹ by December 5th, 2022

Call 440-6193 or 579-4347



Sponsored by
New England Lions Club
Anton Ulijohn American Legion Post 66



ABS AI School

January 4th - 6th, 2023
April 26th - 28th, 2023

Dickinson State University • Dickinson, ND

• Insemination Procedures • Synchronization Programs
• Sire Selection & EPD's • Heat Detection • Herd Management
• Reproductive Physiology • Breeding Facilities • Pre-Breeding Nutrition

For an application contact **Badlands Genetics**
Donald or Sarah Nordby 701-879-6376

STRANGE WORLD
Nov. 25-27 & Dec. 2-4

Playhouse Theatre
Mott, ND - Phone 824-2721

SHOWTIME

Friday and Saturday - 7:30 PM
Sunday - 2:00 PM

CHAMPION SUPPORTER
The Hummel Family Darryl, Cathy, Kris & Josh



PG-13 - 1hr 42 min

The legendary
Clades are a
family of explorers
whos differences
threaten to topple
their last and most
crucial mission.

Coming Attractions

Black Panther: Wakanda Forever on
Dec 9-11th & Dec 16-18th

Please see our face book page for updated
information at Playhouse Theatre
or call us at 701-824-2721



**Dakota Prairie
Helping Hands**
will be having a
Holiday Open House

Tuesday, December 6, 2022
from 2:00 pm - 7:00 pm
210 South Main - Lemmon, SD

Stop in for Coffee, Hot Cider and Goodies.
Also register for door prizes.

Custer Health to Hold Area Clinics

Thursday, December 8
- Footcare - Glen Ullin Senior
Center (110 S Main Street, Glen
Ullin) - 12:30 - 1:30 pm CT. Call
348-3838 for appointment.

Thursday, December 8
- Footcare - Hebron Senior Center
(707 Main Street, Hebron)
- 8:30 - 11:30 AM CT. Call 701-
622-3591 for an appointment.

Wednesday December 14
- Footcare - Carson Manor (410
Grant Street, Carson) - 12:30 -

2:00 pm MT. Call 622-3591 for
appointment.

Wednesday December 14
- Immunizations- Carson Court-
house at Custer Health (106
2 Avenue NE, Carson) Clinic
hours are between 9:00 am - 12
noon MT. Call 622-3591 for ap-
pointment.

Tuesday, December 20
- Footcare and Blood Pressure -
Flasher 55 Club (67 5 Avenue E,
Flasher) - 11:30 - 1:00 pm CT.
Call Bridget at 622-3591 for ap-
pointment

Bowman Parks & Recreation

Frosty Frolic

Holiday Arts & Craft Fair
Sat., December 10th
10 am - 3 pm
Rouzie Rec Center

305 1st ST SW

Limited Vendor Space Available!
Contact:
Rouzie Rec Center
701-523-3896



Reasons come first. Answers come second.

Life is a unique combination of “want to” and “how to,” and we need to give equal attention of both.

Bits and Pieces
Quilt Club

will have our
Christmas Party
December 1, 2022

Our Place Cafe
in Elgin at 9:30 AM

Bring 2 gifts worth \$1.50
and join the fun games

We will also be planning our next
Quilt of Valor
See you for some Christmas fun

Mott Cannonball
Senior Center Activities

Monday - November 28
Potluck at 12:00
Desserts sponsored by
M/R School, Family and Consumer Science Class

Monday, December 12th
1:30 meeting
and arts or entertainment - FREE
Coffee from the Tulip

Bingo starts in January
2nd Sunday of the month

"All are Welcome"

60th Anniversary Blessings
Floyd & Arlene Frieze

Open House
Saturday, November 26th, 2022
KC Hall - Mott, ND
2-4 pm
Shower with Cards:
401 Montana Ave
Mott, ND 58646





If you impact
one life you
can make
a difference.

OFFICIAL NOTICE OF ANNUAL MEETING
SCRANTON EQUITY EXCHANGE

The annual stockholder meeting of Scranton Equity Exchange will be held at the
Scranton Community Center on Wednesday, December 7, 2022, at 6:00 PM.
The agenda will include an annual operations report and the presentation of the
fiscal year end 2022 financial statement.

One board seat is up for election. Current board member, Steve Wegner, has
notified the board of his intention to run. Under the by-laws of organization, all
candidates wishing to run for election must register in writing with the Central
Office of Scranton Equity a minimum of 30 days prior to the annual meeting.
Refreshments will be served. Door prizes will be given following the meeting.

Scranton
Equity

If you are a stockholder, we encourage you to attend.

Steve Wegner, Secretary

Parish Mission

I am pleased to announce that St. Charles Catholic Church will be hosting a parish mission from Sunday Nov 27 to Tuesday Nov 29. The mission will include mass each day, a presentation given by Fr. Luke Doyle, Adoration of the Blessed Sacrament, and Confession. This is a great opportunity for spiritual growth for all in preparation for Christmas.

Fr. Luke Doyle is a priest of the Archdiocese of Kansas City in Kansas, ordained on May 29th of this year. He is a beloved son, brother, friend, godfather, (favorite!) uncle, and very much still a saint in training. Father's journey to the priesthood was anything BUT smooth, yet Jesus was not afraid to call him. Before his ordination, Fr. Luke previously worked as a high school theology teacher, as an RCIA director, and as a Catholic speaker. Fr. Luke has been blessed to form and to share the ABUNDANT LIFE of Christian friendship with disciples ranging from

high schoolers to NFL players, and everyone in between! Fr. Luke has a passionate love for the Immaculate Heart of Mary, an obnoxious devotion to St. Luke #bestsaintever and he will shamelessly attempt to convert anyone he meets into a KC sports fan! He currently serves the Archdiocese of Kansas City as an associate pastor at St. Michael the Archangel Catholic Parish in Leawood, KS. I can attest to the great friend that Fr. Luke has been to me since we met at Kenrick Glennon Seminary 5 years ago. I am excited to have him in Bowman speaking about his experience and love of God.

In conversation with Fr. Luke, we decided to center this mission around the Eucharistic

Revival going on in the United States. It is important for all of us to know that Jesus is present in the world in a very real way in the Eucharist. Another aspect I have asked him to highlight is the importance of Confession. These two sacraments give us the strength we need to pray unceasingly and seek God in all aspects of our lives. I can't wait to hear what he has to say and what God will do for all in attendance.

Again, I am very excited to be hosting Fr. Luke for this parish mission. I invite all to attend any or all the nights of the event. I know it will be fun, a time of spiritual renewal, and worth your time. Know of my prayers and I look forward to seeing you at St. Charles! God Bless.

27 N. Main • Bowman, ND
701-523-5000

THE
SILVER DOLLAR
BAR & GRILL

Lunch Specials
Nov. 28th - Dec. 4th

Monday 28th
Black & Bleu Grilled Chicken w/Choice of Side

Tuesday 29th
Silver \$ Chicken Fried Steak
w/Mashed Potatoes, Gravy and Veggie

Wednesday 30th
Grilled Cheese w/Tomato Basil Soup

Thursday 1st
Loaded Fish Sandwich w/Tomato,
Lettuce & Cheese

Friday 2nd
\$1.00 Off All Burgers

Saturday 3rd
Silver \$ Sirlion Steak Hoagie
NDSU vs SW Miss St. or Montana
Win an NDSU Stadium Chair

Sunday 4th
Enjoy Sunday Morning • 8am - 12noon
Buffet w/Bacon, Sausage, Brats, Pancakes,
House Baked Caramel Rolls & Biscuits
w/Gravy and more!

BCDC Bingo Plus Food
Every Tuesday @ 6pm
Try our Bingo Specials

Salad Bar open
Monday - Saturday
11am-7pm

Kids are welcome until
10pm for dining!

Please check the Silver Dollar
Facebook page for menu updates
or changes


- Saturday -
We will have the NDSU game!
1:30pm

- Sunday -
The NFL is in the House!
Drink Specials All Day!

Free Shuttle Service
to and from
the Silver Dollar
701-523-5000

Order ahead • 701-523-5000
for convenient drive-thru pick-up!

St. Charles • St. Mel's • St. Mary's



PARISH
MISSION

St. Charles Catholic Church • Bowman

Saturday, November 26th
4pm - Mass
KC Soup and Sandwiches following Mass
Meet and Greet with Fr. Luke Doyle

Sunday, November 27th
10am - Mass
KC Soup and Sandwiches following Mass
Meet and Greet with Fr. Luke Doyle
4pm - 1st Presentation followed by Confession

Monday, November 28th
6pm - Mass
6:30pm - Presentation by Fr. Luke Doyle
7:15pm - Adoration and Confession

Tuesday, November 29th
6pm - Mass
6:30pm - Presentation by Fr. Luke Doyle
7:15pm - Adoration and Confession

Everyone Welcome!

~SAVE THE DATE~ TREE LIGHTING CELEBRATION Mott, ND

Sunday, December 11, 2022

Get in the Holiday Spirit with us!

Performances by:

Mott Academy of Martial Arts

Activities include:

Craft & Vendor Fair

Supper (Free Will Offering)

Visits & Photos with Santa

Hot Drinks

Event brought
to you by the
Mott Visionary
Committee &
Eido Printing!

Any donations can be made to the Mott Visionary Committee & mailed or dropped at
Commercial Bank of Mott, 325 Brown Avenue, Mott, ND 58646!

Hettinger American Legion Post 115

Open for Breakfast & Lunch
6:00am - 2:00pm
Monday - Friday

301 South Main • Hettinger, ND
701-567-4696

Schock Real Estate

124 Main Ave. S. - P.O. Box 239 - New Leipzig, ND 58562

www.schockrealestatend.com

Martin F. Schock, Broker - 701-584-3053 (H)

Colleen Vetter, Sales - Elgin - 701-584-2535 (H)

Eggs!

By Kathy Craigo-Harteis

Back in the 70's living in Portland, Oregon, there were shortages. There was a milk shortage and also we were put on an odd and even day system to buy gasoline.

Now among other things I guess it's eggs. That's a bad thing at holiday baking/cooking time. In this past week I took me three attempts to get three dozen eggs.

The first place I looked was totally out. Other places had limits on the number of cartons you could purchase.

Adding insult to injury, the prices our totally out of control. Sadly it is likely to get worse.

I spent close to \$300 on groceries this week and only bought one meat item. There's something wrong with that.

I'm getting concerned of what is to come.

We've been battling some early onset winter weather here in North Dakota. When the newscasters use words like arctic blast, bone chilling temperature and wind chill you know it's time to hunker down.

At some point you have to put on the long underwear and venture out though.

We will survive.

In all honesty, Tom and I will head south in January this year. It'll be a nice break from snow for a while.

But for now we are going into a week of thankfulness. Thanksgiving is more than eating turkey. It's a time to be thankful we can be together. God has blessed us in so many ways.

Shame on me for whining about eggs and snow.

I got some eggs and I have a warm house for shelter. God is good.

Life is good today.

THANK YOU

Our family would like to thank everyone for the wonderful thoughts, words, memories the stories and lunch was great.

Thank you to everyone who helped us out through E. R. Woodys illness and his loss. It was greatly appreciated.

Thanks to Evenson Jensen Funeral Home, Pastor James Schmelig for the wonderful services at the Church and the Besler Cemetery. For all the beautiful flowers and the work the Lutheran Ladies and Catholic Ladies for the lunch after Church services at the Hall in McIntosh.

Thank you so much to Brad, Fern Besler and Families for giving Woody his last ride in his wagon to his final resting place and having a lunch afterward at their ranch. All the kindness and help will never be forgotten.

A memorial to Alzheimer Association will be made.

E. R. "Woody",
Shirley Penor and Family

Wordsmith

Every once in a while someone will call me and request one of the many books I have written. They are all paperbacks: 5X8. I put the book in a big manila envelope, fold it over, close the metal clip, and address it with a felt tip pen. I go to the same Post Office all the time. They know me by name. They know I'm going to try to mail this book without a SWAT team rushing in with a robot to check it out.

It's a book. The clerk has even read some of them.

The package is the size of a book. It weighs what a book weighs. It feels like a book in a manila envelop. It isn't sealed or stapled shut.

So she says to me, "Does this contain drugs or toxic fluids or munitions or caustic chemicals?" (Or something like that.)

If it wasn't such a stupid question I wouldn't have said what I did. I told her it contained 4 Hummvees, 100 sniper rifles, a million rounds of ammo, a Howitzer cannon and three fighter jets.

It wasn't on the scale yet. Six people were in line listening...ready to run.

Wake up! If there was anything in the package, any package, that was toxic, explosive, corrosive or illegal, do you think the sender would admit it?

Hebrews 4:12 It's a book. "The pen is mightier than the sword."

Consider this: In 26 C.E. Pontius Pilate was governor of Judea and Herod Agrippa was Governor of Galilee. Of course their ambitions brought them into a political collusion. They were both coveting the highest throne.

But when it came to the

**Handyman/Carpentry
Services Available
20 years of building
experience
Licensed and insured.
Located in the Mott area.
Joseph Stenberg
Call
406-212-2832**

subject of Jesus Christ, who was not a king as they thought of a king, they came to a (not so) amicable agreement. This 3rd party usurper had to go. (There's a scripture in Daniel that says, "They set around one table and told lies This scripture has nothing to do with Chris but the meeting does Same difference?") They agreed and became friends. Let's use this word loosely. After this collusion, wherein they successfully had Christ executed for treason against the Roman Empire, Pilate got a letter from Caesar requiring him to return to Rome. There he was forced to commit suicide.

Guess who wrote the letter that accused Pilate of crimes of state that were punished by death?

Come to think of it, Judas Iscariot committed suicide, too. Read between the lines. Maybe that's where the word, underhanded, came from.

Jim's Repair & Implement Bowman, ND 701-523-5579

Farm Tractors &
Equipment Repair
Interstate Batteries
Crory Products

Jim - 701-523-3372
Sheldon - 701-206-1190

St. Vincent's
St. Henry's
St. John the Baptist
Catholic Church
Schedule for
November 26 & 27

(M) 4:30 Sat.
(R) 10:00 am Sun.
(M) 8:00 am Sun.
(NL) 7:00 pm Sat.

Southwest PUBLIC TRANSIT

Public Transportation for All Residents
of Adams, Bowman, Hettinger & Slope
Counties of North Dakota for 30+ years

Out-of Town Trips Weekly

From your door to Dickinson, Bismarck,
Rapid City, Ft. Meade etc.

CALL 800-280-0204

• for schedule, rates and to book a ride

In-Town Trips Daily Monday - Friday

Bowman - CALL 701-523-3241 • 8am - 4pm

Hettinger - CALL 701-567-2476 • 8am - 4pm

Payment sources accepted include:

Medicaid, Medicaid Expansion, VA & Private Pay.

Well maintained vehicles with wheelchair access and
trained drivers to service social, employment,
educational and medical transportation needs.

Minimum 24 hours notice.

Veterans Ride FREE to Medical Appointments

OPEN TO THE PUBLIC

< < < NOTICE > > >

Bowman County Board Positions Expiring Year End 2022

The Bowman County Commissioners respectfully request that any individual, that is a qualified candidate, living in the taxing district located in Bowman County, and is interested in serving on the following boards contact the auditor's office at 523-3130, by December 16, 2022 to complete the Citizen Interest Application Form.

Bowman County Airport Authority
Bowman County Housing Authority

Bowman County Water Board
Bowman County Weather Modification Board
Bowman County Weed Board
Bowman County Zoning Board

One- Five Year Term
One - One Year Term,
One- Two Year Term,
One - Three Year Term
One - Three Year Term
Two- Five Year Term
One - Four Year Term
Two- Four Year Term

11 August 2022

To Whom It May Concern:

I'm writing to inform you of the outstanding contribution Specialist Andrew Sulzman has made at USO Kansas on Fort Riley, KS. Starting in October 2021, he has volunteered his valuable time, several hours, assisting in special events for military members and their families, serving hot meals in time of need for military families, and assisting with center operations which include cleaning, maintenance, and providing service. His dedication to supporting his fellow military members in the last year has created such a lasting and positive impact in the community and each person that has come into our center.

The USO was created in 1941 by congressional charter to lift the spirits of America's troops and their families. This mission is made possible by the USO's most important resource, its volunteers. Specialist Andrew Sulzman devoted his spare time to serving other service members and dependents. His actions embody the volunteer spirit we should all aspire to achieve. Without the hard work and dedication of volunteers like, we would be unable to provide "a home away from home" for our military members and families here in Kansas, 7 days a week, 365 days a year.

His outstanding volunteer service included over 101.75 hours of hands-on community service of a sustained, direct, and consequential nature that was significant and produced tangible results in support of the military and civilian community. His service reflects great credit upon himself, the USO, the community of Fort Riley, and the United States military. Specialist Sulzman will be an asset to any organization, and we were very fortunate to have him here at USO Kansas.

Sincerely,

Melissa Burmahl
Melissa Burmahl

USO Kansas Center Operations Supervisor



Kansas

Family is the most important thing in the world.

The Incarnation

O God,
who looked on us
when we had fallen down into death,
and resolved to redeem us
by the Advent of your only begotten Son;
grant, we beg you,
that those who confess
his glorious Incarnation
may also be admitted to the fellowship
of their Redeemer,
through the same Jesus Christ
our Lord.

—Saint Ambrose



Scranton
Equity

pronto
AUTO PARTS
Scranton, ND

Mobile Tire Repair • Complete Automotive Care
We Now have Beet Juice for Tractor Tires
Call today to make an appointment 275-8169

**BOWMAN
AREA
VETERANS
WALL**

**LET US
HONOR
YOU**

WALL ELIGIBILITY:

- PAST/CURRENT MEMBER OF THE U.S. ARMED SERVICES
- PAST/PRESENT BOWMAN COUNTY RESIDENT
- GRADUATE OF ANY HIGH SCHOOL IN BOWMAN COUNTY

SUBMIT NAMES TO:
WWW.TINYURL.COM/BCVETWALL
OR CALL 701.523.7774

701.206.0129
vmhdez62@gmail.com
Eido Connect

A Little Birdie Told Me

By: Vivian Hernandez
A Little Birdie Told Me: "It's Time to Get Back to the Basics of Advent & Christmas!" From now until the 12 Days of Christmas are over, and just for the record the 12 Days of Christmas start with Christmas, the Little Birdie will be exploring the history of Advent and Christmas traditions.

Advent starts this year on Sunday, November 27th and ends of December 18th. Advent begins on the Sunday closest to the Feast of St. Andrew the Apostle (November 30). Advent had its start in France in its earliest form. Advent was a time of preparation for the Feast of Epiphany a day when converts were baptized. Advent has been called St. Martin's Lent with a time of fasting and prayer.

"In 380, the local Council of Saragossa, Spain, established a three-week fast before Epiphany. Inspired by the Lenten regulations, the local Council of Macon, France, in 581 designated that from November 11 (the Feast of St. Martin of Tours) until Christmas fasting would be required on Monday, Wednesday, and Friday. Eventually, similar practices spread to England. In Rome, the Advent preparation did not appear until the sixth century, and was viewed as a preparation for Christmas with less of a penitential bent."

"The Church gradually formalized the celebration of Advent as a period of spiritual preparation for Christmas. The Gelasian Sacramentary, traditionally attributed to Pope St. Gelasius I (d. 496), was the first to provide Advent liturgies for five Sundays. Later, Pope St. Gregory VII (d. 1095) later reduced the number of Sundays in Advent to four. Finally, about the ninth century, the Church designated the first Sunday of Advent as the beginning of the Church year."

German Lutherans began the practice of an Advent Wreath in the 1500's: the wreath is round having no beginning or end and made of fresh plant material. Four candles adorn the wreath 3 purple signifying, penance, preparation, and

sacrifice, the pink candle is lit on "Gaudete Sunday" the third Sunday of Advent reminding us "Jesus is Near."

The light represents Christ, who entered this world to scatter the darkness of evil and show us the way of righteousness. The Advent Wreath is a great tradition to carry on in our homes in an effort to keep our hearts focused on the True Meaning of Christmas.

Advent encourages the faithful to reflect on the Incarnation of our Lord, He humbled Himself taking on our humanity and entered time and space to free us from sin as we look forward to His second coming at the end of time when He will come to judge the living and the dead.

A Little Birdie Told Me: "Advent a Beautiful Tradition to Light Our Way to Jesus!"

We would like to say thank you to all who helped in any way when our dad/ grandpa, Jim Oberfoell, passed away. You gave hugs, sent cards, gave memorials, made food, attended dad's celebration of life and shared memories. A very special thank you goes out to Pastor Ed and Shannon for preparing and serving the family meal Friday evening. A hearty thank you also to Linda and Wanda who helped serve the lunch after the service and to pastor Ed for the devotional. Trevor and Angela, you did an awesome job as usual even when we stretched you a little by using an unusual location. When a lifetime has been spent and all you are left with are the memories, they are so precious.

Sandra Dingfelder
Becky & Don Oakland
Tim Oberfoell
Lee & Amber Dingfelder and family
Kristi & Eric Shanenko and family
Jonathan & Kat Oakland and family
Heather Oakland

Daily Lunch SPECIALS
Nov. 28th - Dec. 2nd
Lunch Specials served 11am - 2pm
* Subject to change
523-5753

Monday 28th - CLOSED

Tuesday 29th - Loaded Nachos
Soup: Chicken Tortilla

Wednesday 30th - Wing Wednesday
Soup: Wisconsin Cheese

Thursday 1st - Popcorn Chicken Bowl
Soup: Homemade Tomato Basil

Friday 2nd - Meatloaf, Baked Potato, Dinner Roll & Veggie
Soup: Clam Chowder

Steak Night • Saturday, December 3rd
NY Strip
Includes: Choice of Potato, Veggie & Salad

DEUTSCHER CLINICS PC
Joel A Deutscher DC
Reece A. Deutscher DC
Chiropractic Care
11 4th St E
Lemmon, SD 57638
(605) 374-5654

Bowman Chiropractic Clinic
James O. Stafford D.C.
• Manual • Activator
• Acupuncture
15 N. Main St.
Bowman, ND 58623
701-523-4830

Brosz
ENGINEERING, INC.
ARCHITECTURE ENGINEERING SURVEYING
109 South Main • PO Box 357
Bowman, ND 58623
701-523-3340

Tri-State Chiropractic Center
Charles F. Whitney, D.C.
Office Hours by Appt.
111 4th St. NW
PO Box 176
Bowman, ND 58623
701-523-3239

NURSING HOME PUBLIC MEETING

Wednesday, December 14, 6:30 pm at the Mott Nursing Home

Brad DeJong, CPA, from Eide Bailly will be discussing the feasibility study and it's findings in terms of reopening the Mott Nursing Home.

Everyone is welcome and encouraged to come participate in this City-wide endeavor.

CORNER MARKET in WIBAUX, MT**Turnkey business!**

Established clientele and downtown location with inventory, equipment, building and staff lets you hit the ground running on day 1. 6,000 sq. ft building less than 20 years old.

Ample cooler space, freezers, display aisles and locker
Adjoining block building is 1,800 sq. ft.

With 12' x 12' overhead doors

Call for a showing today!

Sue Finneman, cell 701-527-8159

suefinneman@homeandlandcompany.com

Home and Land Company,

269 16th St W, Suite A, 701-483-6789



11-5, 12, 19, 26

LEMMON LIVESTOCK, INC.

Phone: 605-374-3877

Due to advertising deadlines, we will only be running our upcoming sale schedules on our report.
If you go to our website www.lemmonlivestock.com you can view our market report and other information there.
Or find us on facebook under Lemmon Livestock!

**Follow us on facebook under Lemmon Livestock!
*Starting Wednesday Oct. 5 through Thursday Nov. 10:
We will sell Yrlgs & Calves on Wednesdays and Mkt Cows, Bulls & Hfrettes on Thursdays.

NOV. 30 WED: REGULAR SALE W/ALL BREEDS CALF SALE
Mkt Cow/Bulls @ 9:00, Calves @ 12:00

DEC. 7 WED: REGULAR SALE W/ALL BREEDS CALF SALE
FEATURING WEANED CALVES

DEC. 14 WED: REGULAR SALE W/SPECIAL BRED HFR & STOCK COW SALE

DEC 21 WED: NO SALE DUE TO THE CHRISTMAS HOLIDAY

DEC. 28 WED: NO SALE DUE TO THE NEW YEARS HOLIDAY

JAN. 4 WED: REGULAR SALE W/ALL BREEDS CALF SALE

W/SPECIAL BRED HFR & STOCK COW SALE

DEC 21 WED: NO SALE DUE TO THE CHRISTMAS HOLIDAY

DEC. 28 WED: NO SALE DUE TO THE NEW YEARS HOLIDAY

JAN. 4 WED: REGULAR SALE W/ALL BREEDS CALF SALE

You can listen to our weekly radio report at www.kbjm.com, click on the Lemmon Livestock link

You can watch & buy during the sale live every week by going

to www.cattleusa.com, register and apply to bid. If you have any problems with this process please call Lemmon Livestock.

**CATTLE RECEIVING STATION:
C & D Yards, Baker MT.**

*****Receiving Station Contact:
CURT WILLIAMS, Baker Field Rep-
(406)778-3773 or (406)978-2520
C & D YARDS- (406)778-3282

*YOU CAN REACH US ON THE INTERNET AT
www.lemmonlivestock.com
or you may e-mail us at lemmonlivestock@sdplains.com

We can also be found on facebook under Lemmon Livestock
You can also find us on the DTN under Auction Markets

IF YOU HAVE LIVESTOCK TO CONSIGN OR WOULD LIKE US TO STOP AT YOUR RANCH

PLEASE CALL **LEMMON LIVESTOCK** AT 605-374-3877 OR 1-800-822-8853, FAX 605-374-3215

PAUL HUFFMAN OWNER/MANAGER Cell # 605-645-2493
or Home 605-374-5675

CHAD HETZEL ASST. MANAGER 701-376-3748
or Cell # 605-848-0967

CASH HETZEL 605-848-1753

CURT WILLIAMS C & D YARDS, BAKER FIELD REP.
406-778-3282 or 406-778-3773, Cell #406-978-2520

JIM SHERIDAN FIELD REP. 605-490-2288
or 605-967-COWS

AUSTIN VISSER YARD FOREMAN, FIELD REP. 701-659-0172

VICKI FOGERTY OFFICE MANAGER 605-374-5105

JODI JOHNSON OFFICE 605-374-3684

**AMBULANCE**

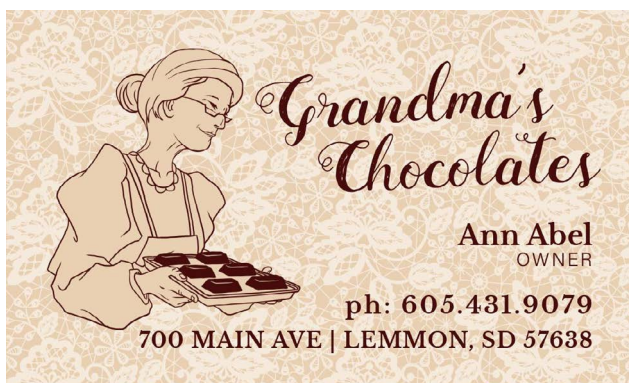
**West River
Ambulance
Receives Trauma
Foundation Grant**

The Board of Directors of the North Dakota Trauma Foundation awarded \$652.60 to West River Ambulance in Hettinger. The grant funds assisted in the purchase of Stop the Bleed kits and an EZ IO drill.

Stop the Bleed kits are vital tools in the hands of trained people to help an injured person lose blood. Living in rural North Dakota, time is of the essence to address the loss of blood. Contact West River Ambulance if interested in a Stop the Bleed course at 701-567-6209.

An EZ IO drill is used in the hands of trained emergency medical service people to aid in gaining access to life-saving medication administration during an emergency.

"Thank you, ND Trauma Foundation, for assisting West River Ambulance in purchasing this important trauma equipment for our crew and our communities," comments Darrell West, Paramedic and West River Ambulance Manager.



700 MAIN AVE | LEMMON, SD 57638

**Placemakers to
Host Former High
School Focus
Group**

Lemmon, SD – The Lemmon community is invited to a focus group to discuss possibilities for the former Lemmon High School building. This meeting will be held November 29th at 5:00 p.m. at the Kokomo on main street in Lemmon.

The focus group, hosted by Placemakers and facilitated by Dakota Resources, hopes to gather information from the community, city council, school board, other groups and individuals interested in the former high school building. The evening's conversation will be centered around identifying the community's needs and in what ways the old high school could fulfill those needs. This community input and brainstorming will

aid in the potential impact the building holds for Lemmon and the surrounding area. These thoughts and ideas will be accompanied by case studies and similar situations happening in rural towns across the Northern Plains.

The former Lemmon High School was declared a surplus building at the Lemmon School Board meeting in March 2022. At the November meeting, the school board discussed putting the old school up for sealed bids. This decision will be discussed further at future school board meetings.

All are welcome to the focus group November 29th at 5:00 p.m. at the Kokomo on main street Lemmon. Refreshments will be provided during the discussion and those attending are asked to RSVP to placemaker-scoop@gmail.com by November 28th.

AgProMachinery
Sales & Service, LLC

NAPA Synthetic Oil

\$4.99 quart

Tub O'Towels

\$11.49

Lemmon/Hettinger

Vermeer®



Laufer Vermeer

1805 2ND STREET NW

HETTINGER, ND 58639

PHONE: 701-567-4368

**Kevin Miller Construction
Bowman, ND**

**Gravel & Scoria Sales**

- Dump Truck • Excavation • Gravel Hauling
- Pay Loader • Grading Road & Site Prep.
- Scraper • Dirt Work • Culvert Sales



Kevin & Roxanne Miller
701-523-5769 (home) • 701-523-1207 (cell)

**Program Support Generalist
Red Trail Energy, LLC
Richardton, North Dakota**

is looking for an individual to join their Admin Team! This person should be both motivated and willing to learn and grow their knowledge as RTE progresses in the ethanol industry.

This person should have sufficient computer skills, be familiar with Microsoft Office (specifically Excel). This person will be assisting management with various administrative tasks and general office functions as well as data collection and helping with regulatory and compliance reporting.

Basic Duties will include, but are not limited to:

- Assist Compliance & Regulatory personnel
 - o Data collection, report preparation
- Assist with administrative tasks
 - o Filing and gathering requested information from management
 - o Maintain Corn/AP Files
- Perform general office functions
 - o Prepare/distribute Mail, maintain office supply inventory, answer phones, direct contractors & deliveries to appropriate area/person.
- Assist accounting department
 - o Prepare weekly bank deposits
- Attend monthly board meetings
 - o Track board member expenditures, take minutes during meetings
- Assist with audits
- Responsibilities and duties may be assigned as necessary

Skill & Knowledge Requirements

- Must be organized and able to meet assigned deadlines
- Ability to multitask between multiple projects at any given time
- Excellent communication skills-both orally and written
- Proficient computer skills
- Proficient in Microsoft Office Applications (Specifically Excel)

Contact Stacy - 701-974-3308
email: stacy@redtrailenergy.com

11-19-26



**Are you loyal, driven,
and compassionate?
Join our team of
like-minded people.**

Activity Aide

Full-time Activity Aide. This position is eligible for a \$4,000 sign on bonus.

Dietary Aide/Cook

Part-time dietary aide/cook; rotating weekends and holidays. \$4000 sign on bonus.

Lab Tech

Full-time lab tech, rotating nights, weekends, and holidays call. This position is eligible for a \$7,500 sign on bonus and \$25,000 student loan repayment.

Housekeeper

Full-time or part-time housekeeper; rotating weekends and holidays. \$4000 sign on bonus.

Daycare Coordinator

Full-time. This position will be responsible for all functions and employees of the daycare. This position is eligible for a \$4,000 sign on bonus.

Paramedic

Full-time or Part-time paramedic. Rotating shifts, weekends, and holidays. This position is eligible for a \$2,000 sign on bonus. Must hold a current paramedic license.

**Certified Nurse
Assistant (CNA)**

Full-time or Part-time positions are available. CNA certification required, but we can assist you

in obtaining certification if necessary. These positions are eligible for a \$4,000 sign on bonus.

RN clinic nurse

Full-time RN floating between 3 clinics. This position is eligible for a \$7,500 sign on bonus and \$25,000 student loan repayment program.

LPN clinic nurse

Full-time LPN floating between 3 clinics. This position is eligible for a \$7,500 sign on bonus and \$25,000 student loan repayment program.

Radiology Tech

Full-time radiology tech, rotating nights, weekends, and holidays call. Must have a radiology degree, willing to train in CT. This position is eligible for a \$10,000 sign on bonus and \$25,000 student loan repayment.

Registered Nurse (RN)

Full-time or Part-time charge nurse. This position is eligible for a \$7,500 sign on bonus and \$25,000 student loan repayment program.

**All full-time and part-time
positions are eligible for
our competitive benefits
package.**

**Contact Kristin at
(701) 584-7247 or
kheid@jmhcc.org
to apply.**

JMHCC is an equal
opportunity employer.



HAPPY Thanksgiving

WOODLEY CONSTRUCTION SUPPLY, INC.
115 4TH ST NW
BOWMAN, ND 58623
701-523-3217




NOW HIRING!

Rise & Shine Daycare

Bowman, ND

- FT Daycare Providers
- Competitive pay
- No Weekends, No Nights, No Major Holidays
- We have amazing kids, cuddly babies & super fun coworkers!

Contact Shalisa 701-206-0647



Thanksgiving Thoughts

Pastor Ray Sherwood
Bowman Methodist Church

I am sure by the time you read this you will have had your Thanksgiving meal and in about 4 weeks we will be celebrating Christmas!

It is kind of hard to imagine that we are into the holiday season already. As I think about it, I wonder what happened to this year as it seems to have just flown by without letting out even a whimper!

I read that some of our government leaders think that Christmas might not happen this year! I am so certain that the enemy of our souls would be overcome with joy if that was to happen! I really wonder if our leaders think that Christmas is only about gifts and not about the Gift that was given to us 2,000 years ago!

I want to share my thoughts on Christmas very briefly here. I know some people put up Christmas stuff right after Thanksgiving and that is ok if that is what you like to do, but I am just not

one of those. Brenda and I will put out our Thanksgiving stuff and then after Thanksgiving we put up our Christmas stuff! For us it puts things into perspective when we don't have Christmas stuff up when it is Thanksgiving.

Don't get me wrong here and say that Pastor Ray thinks no one should put up Christmas decorations until after Thanksgiving...that is just how Brenda and I feel. You do however and whatever gets you into the joy of the holidays!

I do think that Thanksgiving gets the low end of the totem pole because it is between Halloween and Christmas.

For me, I love the Thanksgiving season as it reminds me time and time again of the blessings God has given to myself and my family (personal and church)! Paul writes in 1 Thessalonians 5:18, "...give thanks in all circumstances!" (NIV)

I don't know about you but that can be quite difficult especially when you are walking in the valley of difficult circumstances! Again, it reminds me of Paul and Silas' difficult situation found in Acts 16:22-25,

"The crowd joined in the attack against Paul and Silas and the magistrates ordered them to be stripped and beaten. After they had been severely flogged, they were thrown into prison, and the jailer was commanded to guard them carefully. Upon receiving such orders, he put them in the inner cell and fastened their feet in the stocks. (Here is the good part) About midnight Paul and Silas were praying and singing hymns to God, and the other prisoners were listening to them..." (NIV)

I wonder how many of us, as you are reading this, have been stripped and then severely flogged, thrown into prison with your feet fastened in stocks? I mean, really, how many of us has had that happen to us recently???

My best guess would be to say that not one of us has faced what Paul and Silas went through, and yet, they prayed and began singing hymns to God...being thankful in the midst of trouble!

I think we sometimes complain about going through trials when in reality we should really be thanking God because it is through the trials of life that we gain strength in our faith walk with Christ!

I believe if we can thank God during the most difficult times in our lives, we can surely thank Him in the best of times! Now, saying that when we are going through the best of times, we do tend to forget how we arrived there, and we will place God on one of the back burners just in case we need Him again! Did we remember to thank Him, or did we just give Him lip service for what He did?


How many times do we read about this in the Old Testament with the Children of Israel! Time after time after time! When things were difficult, they called out to God and then when God would deliver them, they would go back to their old ways...forgetting about how they arrived at the place of goodness!

We are truly blessed to live in America today. Yes, with all her problems, we are truly blessed to call this land our home! I hope and pray that, during this Thanksgiving season, I can have an "attitude of gratitude" and extend that attitude to others around me!

Remember that we need to "give thanks in all circumstances!"

WHEN YOU REACH THE END OF YOUR ROPE, TIE A KNOT IN IT AND HANG ON

Phone: 701-523-5922 • 1-877-211-0600
Hwy. 85 South • PO Box 58 • Bowman, ND 58623



BOWMAN AUCTION MARKET

Harry Kerr, Owner/Manager • 701-523-5922
Wayne Miller, Fieldman • 701-279-6649 or 701-523-6885

www.bowmanauktionmarket.com

Upcoming Sales

Monday, November 28 - Regular Sale, plus SHEEP & GOATS
110 14-month old Ramb-Targhee yrng ewes. Few smut faced ewes will sell separate.
Exposed to Dorset rams to lamb January 1, 2023.
These are Sept born ewes from a fall lambing flock. They were shorn end of June so no need to shear before they lamb. If someone is looking for a flock with fall lambing potential these may be for you.
Well grown, excellent quality ewes. Will be ultra-sounded the week of Thanksgiving.

Monday, December 5 - Regular Sale, NO SHEEP & GOATS
Monday, December 12 - Regular Sale, plus SHEEP & GOATS
Monday, December 19 - Regular Sale w/Bred Heifer & Stock Cow Special, NO SHEEP & GOATS
Monday, December 26 - No Sale
Monday, January 2 - No Sale
Monday, January 9 - Calf Special, No Weigh Ups, No SHEEP & GOATS

Sales Report • November 21, 2022

A lot of thin cows again today on a market that is sure lower. Not enough feeder cattle for any good test. Our 9th of January sale is sure getting a lot of consignments so if you have cattle you want on this sale sure give us a call. Thanks everyone for your support at BAM and have a good Thanksgiving. Next week sale cattle and sheep.
110 head of WF yrng ewes bred for January 1st lambing.
Harry

Cows					Cows Continued				
TOWN	#	DES	WGHT	PRICE	TOWN	#	DES	WGHT	PRICE
Belfield	1	blk	945	95.00	Bowman	1	blk	1235	59.00
Bowman	1	blk	1255	77.50	Bowman	1	blk	1320	59.00
Belfield	1	blk	1085	76.00	Rhame	1	blk	1220	58.50
Belfield	3	blk	1215	72.00	Rhame	1	red	1360	58.00
Belfield	2	blk	1505	71.00	Rhame	1	red	1360	57.50
Rhame	1	blk	1165	71.00	Belfield	1	blk	1155	57.00
Ludlow, SD	1	blk	1080	71.00	Scranton	1	blk	1350	57.00
Ludlow, SD	1	blk	1600	70.50	Scranton	1	blk	1045	57.00
Scranton	1	blk	1870	69.50	Amidon	2	blk	1238	57.00
Bowman	2	blk	1408	69.00	Belfield	1	blk	1130	57.00
Rhame	1	blk	1625	69.00	Buffalo, SD	1	herf	1280	57.00
Bowman	2	blk	1445	38.50	Amidon	2	blk	1295	56.50
Bowman	2	blk	1450	67.50	Amidon	2	blk	1473	56.00
Bowman	1	herf	1395	67.50	Rhame	1	red	1400	56.00
Ludlow, SD	2	blk	1283	67.50	Belfield	1	blk	1385	56.00
Marmarth	1	blk	1360	67.00	Belfield	1	blk	1080	55.50
Amidon	2	blk	1370	66.50					
Bowman	1	bwf	1155	66.50	Bulls				
Bowman	1	herf	1410	66.00	TOWN	#	DES	WGHT	PRICE
Rhame	2	blk	1553	65.50	Belfield	1	blk	1855	77.00
Ludlow, SD	1	blk	1305	64.00	Scranton	1	blk	1260	76.00
Belfield	2	blk	1463	63.00	Rhame	1	blk	1110	71.00
Belfield	1	bwf	1415	62.00	Belfield	1	blk	1195	71.00
Belfield	1	blk	1205	62.00					
Ludlow, SD	1	blk	1305	61.00	Heiferettes				
Belfield	1	blk	1170	61.00	TOWN	#	DES	WGHT	PRICE
Belfield	1	blk	1040	61.00	Rhame	3	blk	1025	96.00
Scranton	1	blk	1375	61.00	Belfield	2	blk	933	95.00
Belfield	4	blk	1204	60.50	Buffalo, SD	1	blk	1120	89.00
Belfield	1	blk	1105	60.00	Belfield	1	blk	870	87.00
Belfield	4	blk	1286	60.00	Bowman	3	blk	1173	87.00
Belfield	1	blk	1200	60.00	Rhame	1	blk	955	85.00
Bowman	1	blk	1480	59.50	Bowman	2	blk	1240	84.00
Amidon	1	blk	1250	59.00	Buffalo, SD	1	herf	985	79.00

Check Out Our Website Today!
www.bowmanauktionmarket.com

Buzzy Cafe in Beach, North Dakota



Favorite of locals and tourists alike. Long standing clientele in the community with updated features and equipment. Attached meeting facility room for 125 friends. Home town values still exist here.

For more information contact
Bruce Ross, 701-872-6596
bross.midstate.net

Home and Land Company
269 16th St. W, Suite A, Dickinson, ND 701-483-6789



SAVE \$80

on ANY SET of 4 Passenger or Light Truck Tires in stock when you use your Northwest Tire Credit Card. With installation and purchase of premium tire coverage. Some exclusions may apply.

Expires November 30, 2022

Text Northwest to 46178
www.nwtire.com



APPLY NOW!

Phone: 701-523-5236
105 N Main • Bowman, ND 58623

Scranton Equity We Are Hiring

Full-Time Main Office/Grain Clerk
Competitive Wages • Excellent Benefit Package

This position is customer service focused, with a variety of administrative tasks including data organization and tracking

For an application stop by the Central Office, call us at (701) 275-8221 or visit our website at scrantonequity.org

An application and resume can be dropped off at the Central Office, mailed to Scranton Equity, PO Box 127, Scranton, ND 58653 or emailed to contact@scrantonequity.org

BOWMAN LODGE & CONVENTION CENTER



WE'RE HIRING

WE WANT YOU !!

DO YOU GET PAID TO FOLD LAUNDRY AT HOME? WHY NOT FOLD OURS FOR A PAYCHECK?

AWESOME BENEFITS
Flexible Hours & Scheduling
Employee Meal Benefits
Free Gym & Pool Membership
Free Access to the Simulator
Discounts on Rooms
Holiday Pay
On-Site Living Options Available
& MORE TO COME!

We're looking for fun, talented people who love to put their customers first! As the premier hotel property in Bowman, we love to take care of our guests as well as our locals. Whether that's in the form of a comfortable night's stay or a delicious meal!

HOTEL POSITIONS AVAILABLE:	GRAZER'S POSITIONS AVAILABLE:
Front Desk Clerk	Server
Night Audit	Cook
Housekeeping	Prep Cook/Dishwasher
Laundry Attendant	Shift Supervisor
	& Management Positions Available

JOIN OUR TEAM! STOP BY THE FRONT DESK TO GET AN APPLICATION TODAY!

Buzzy Cafe in Beach, North Dakota



Favorite of locals and tourists alike. Long standing clientele in the community with updated features and equipment. Attached meeting facility room for 125 friends. Home town values still exist here.

For more information contact

Bruce Ross, 701-872-6596
bross.midstate.net

Home and Land Company
269 16th St. W, Suite A, Dickinson, ND 701-483-6789



11-19,26-12-3,10

AgProMachinery

Sales & Service, LLC

END OF THE YEAR SPECIALS

VALID THROUGH DECEMBER 31ST



Hopkins VueSmart Trailer Camera

Part #: BK 50050

\$159.99 / each

Save \$30.00 Was \$189.99

SAVE 29%

\$5.99 /each

NAPA® 12" Tool Bag

Bolsa de herramientas NAPA® de 12"

#20181201



SAVE UP TO 29%

\$28.99 /1 gal.

Shell Rotella® T6 Full Synthetic Motor Oil

Acéite de motor completamente sintético Shell Rotella® T6

5W40, 5W30, 15W40

5W40, 1 qt. \$7.49





is planning a bus trip to

A VERY MERRY BADLANDS CHRISTMAS

in Medora with tentative dates of

December 3rd and 17th

Showtime is 2pm

and will celebrate the season with music, comedy and inspiring Christmas cheer.

Call Cheryle at 1-800-280-0204 for more information and to reserve your seat!



BOOSTER PAC

12 VOLT JUMP STARTER



\$199

SOR ES5000

• 1500 Peak Amps • Heavy-Duty Clamps

• 600 Cranking Amps • Automatic ReCharging

• 12 Volt Power

SAVE BIG ON THESE END OF THE YEAR SPECIALS! CALL OR TEXT 701-567-7500 TODAY!

Up to 37% OFF Select Cold Weather Chemicals



SAVE 29%

\$4.49 /1 gal.

Peak® -30°F All-In-One Windshield Washer Fluid

Líquido limpiaparabrisas todo en uno Peak® -30°F

#PKN003



CORNER MARKET in WIBAUX, MT



Turnkey business!

Established clientele and downtown location with inventory, equipment, building and staff lets you hit the ground running on day 1. 6,000 sq. ft building less than 20 years old.

Ample cooler space, freezers, display aisles and locker

Adjoining block building is 1,800 sq. ft.

With 12' x 12' overhead doors

Call for a showing today!

Sue Finneman, cell 701-527-8159
suefinneman@homeandlandcompany.com

Home and Land Company,
269 16th St W, Suite A, 701-483-6789



11-5,12,19,26

Maxi Trac Tri-Folding Steel Ramps - Pair

Part #: BK 7554654

Line: Balkamp

Was \$197.99

\$92.49 / Pair

Monthly Special



Hettinger Location: 201 HIGHWAY 12 E HETTINGER, ND 58639 | 701-567-7500

Lemmon Location: 1000 1ST AVE W, LEMMON, SD 57638 | 605-374-7688

Eido Connect

Only publication directly mailed to EVERY HOUSEHOLD

11,800 copies - MAILED

Get Your 40% North Dakota Tax Credit from WRHS Foundation Before It's Too Late!

By Ted Uecker, WRHS Foundation

With the tax deadline soon approaching, you and your business still have time to acquire a 40% North Dakota tax credit for charitable giving. You are eligible since West River Health Services Foundation, your local accredited and licensed 501 (C) 3 charitable institution, has accredited North Dakota Endowment Funds. By giving \$5,000 or more per individual per year up to \$25,000 to one of our qualified Endowment Funds, you can receive a 40% North Dakota tax credit (up to a maximum tax credit of \$10,000 per year per individual or \$20,000 per year, per couple filing jointly). This is in addition to your federal tax credit for charitable giving.

For example, if you decide to give \$10,000 to any of the WRHS Foundation's Endowment Funds, you could receive a \$4,000 ND tax credit. And if you were in a 40% federal tax bracket, you'd receive another \$4,000 tax credit. Therefore, your \$10,000 gift would really only cost you \$2,000!

Businesses that pay state income tax may also receive a

40% tax credit up to a maximum credit of \$10,000 by making a \$5,000-\$25,000 gift to an accredited Endowment Fund.

For instance, if a business gave \$25,000 to the WRHS Foundation, they'd receive a \$10,000 ND tax credit and if they were in a 40% federal tax bracket, they'd receive another \$10,000 tax credit. Therefore, their \$25,000 gift would only cost them \$5,000!

Let's all admit one thing: this is an amazing tax credit! How much longer do you think North Dakota will give us this 40% tax credit? Acting upon this tax credit sooner than later might be a smart idea. West River Health Services Foundation offers three accredited endowment funds for you to consider giving toward: Healthcare Heroes Endowment Fund, Physician Recruitment Endowment Fund and General Endowment Fund.

If you have any questions about this amazing 40% North Dakota tax credit or our permanent endowment funds at the WRHS Foundation, please see your financial planner or contact Ted Uecker at the WRHS Foundation at 701-567-3666. Why not save taxes while supporting your local healthcare at the same time? TOGETHER we can make a difference for your bottom line and our community's health.

Western Edge Realty Offers the Following Properties For Sale

Agricultural Properties:

- **PENDING!** 320 +/- Acres of Adams County Cropland
- **NEW!** 21 +/- Acres Cropland with 17,000 Bu. Grain Bin Storage – Mott, ND
- **NEW!** 16 +/- Acres Vacant Land – Mott, ND

Income Properties:

- **PENDING!** Countryside Inn – Watauga, SD
- **PRICE REDUCED!** RV Park with 4 Hook Ups For Sale – Lemmon, SD

Residential Properties:

- **PRICE REDUCED!** Manufactured Home Located on 3 City Lots – Morristown, SD

Sold Properties:

- 4-Plex Unit Located at 300 – 1st Ave West, Lemmon, SD.
- 4-Plex Unit Located at 206 – 4th Ave East, Lemmon, SD
- 1739 +/- Acres Cropland - Golden Valley County, ND
- 160 +/- Acres of Hayland/Pasture –Perkins County, SD
- 480 +/- Acres of Crop, Pasture & Hayland – Sioux County, ND
- 160 +/- Acres of Hayland/Pasture –Corson County, SD
- 320 +/- Acres of Pasture/Hayland – Perkins County, SD
- 14.92 +/- Well Maintained Rural Acreage – Lemmon, SD



For more information contact:
Western Edge Realty
Jack Stebbins - Broker (701) 523-6271
Shawn & Sarah Weishaar - (701) 376-3582
Email: shwshr@sdplains.com
For complete details visit: www.weishaarsales.com

11-19,26-12-3,10

40% North Dakota State Tax Credit ?

Really? If I'd have known that, I would have given \$5,000 or more to West River Health Services Foundation's accredited Healthcare Heroes, Physician Recruitment and General Endowment Funds a long time ago (at least since 2011, when this almost unbelievable North Dakota state legislation was passed).

Now you know. And you can realize the tax savings.

The following table shows you how this 40% tax credit works:

Gift Amount:	\$5,000	\$10,000	\$25,000	\$50,000
ND Credit:	-2,000	-4,000	-10,000	-20,000
*Fed Credit:	-2,000	-4,000	-10,000	-20,000
Gift Cost:	\$1,000	\$2,000	\$5,000	\$10,000

*Table example shown using 40% "federal" tax bracket

December 31, 2022 is coming up fast! For more details on this amazing 40% ND tax credit, call Ted Uecker at the WRHS Foundation at 701-567-3666. Why not? You may as well receive the largest state tax credit in the USA! And who knows how long North Dakota will offer this tremendous savings? Call us or come see us. 40% is unreal!

To receive a federal tax deduction for charitable gifts, a person must itemize. Please consult your own attorney, accountant or financial advisor on your situation.



Eido Connect we're here to help you grow your business! 11,800 copies only publication with 100% coverage!!!



A Little Birdie Told Me

By: Vivian Hernandez

A Little Birdie Told Me: "God Has a Plan For Our Good!"

The Little Birdie was off to Bismarck for surgery last week and thought "Why not stop in Glen Ullin and check out Rancher's Rest?" I had gotten a call from a good friend of the owner, Sarah White several months ago, shortly after I 'd done an article on Glen Ullin. Ava Hintz informed me of the new Rancher's Rest coffee shop which opened in September of 2021.

A job in the oilfield prompted Sarah and her Husband Sid to move to North Dakota from the Pacific Northwest: Oregon and Washington. Glen Ullin was not on the radar Sarah even commented as they drove through Glen Ullin, "I'm not living here!" After searching the area for a place to call home they found a house for rent in you guessed it, Glen Ullin and cant be happier with the decision. Sid now works for the ND Dept. of Transportation and Sarah runs Rancher's Rest. Sarah & Sid have 2 children: Aiden 15 and Natalie 13.

Rural life was very new to the White's being "City Kids" as Sarah told me. After moving to Glen Ullin the White's started helping out a local rancher, Aiden and Natalie joined 4-H and show both sheep and heifers at the fair and are working hard to build their own sheep herd. Natalie enjoys dance and three times a week attends the Let' Dance Studio in Bismarck and teaches classes.

Rancher's Rest coffee shop was a way to give back to the community that has been so welcoming and supportive. The hope of the Whites is to provide a place to "Rest" focus on what's good and inspires others to have an "attitude of gratitude" to God for all our blessings. Matthew 11:28 "Come unto Me all you who labor and are burdened and I will give you rest."

Sarah rents the building from a local church the common area is used by many local groups. Rancher's Rest sponsored a school donation project and families could stop by and get items they needed for the upcoming school year. The first Monday of the month is Mission Monday and a portion of their profit is donated to charity. Thankful Thursdays mark the month of November: patrons are asked to write what they are grateful for and place it on a pumpkin. The idea is to change our mindset to actively seek the good.

Coffee beans are purchased from the Mighty Missouri Coffee Co. in Bismarck; pastries are made fresh at a bakery in Beulah. OH! Yes I did have my usual cup of deliciousness: a double shot of espresso, run through the grounds twice, dry with a ½ shot of sugar free hazelnut cappuccino! Don't tell my cardiologist I just couldn't resist and Sarah got it perfect the first time! Just as

I'm ready to leave Sarah asks, "Can I pray with you!" What a beautiful end to a most pleasant visit.

Rancher's Rest will be open on December 3rd from 5-8:30 pm following the Parade of Lights in Glen Ullin. Ranchers Rest is open Mon – Fri 5:30 am – 11:30 am. Stop by at 117 S. Main, Glen Ullin for a cup of cheer and a word of encouragement! 701-870-2566 and on Facebook

A Little Birdie Told Me: "Tis' The Season to Have a Grateful Heart!"

HAPPY THANKSGIVING FROM THE LITTLE BIRDIE!



NORTHWEST FARM & Home Supply

LUMBER * HARDWARE * PAINT * BUILDING CENTER * VET & FEED SUPPLY
* GIFTS * CLOTHING * HOUSEWARES * KEYS CUT

406 10th St. W
Lemmon, SD 57638
605-374-3814
1-800-351-3815

STORE HOURS:
Mon-Fri: 8 AM–5³⁰ PM
Sat: 8 AM–1 PM

VISA MasterCard DISCOVER

Gift Cards!
Get a \$60
Gift Card for
just \$50!
Or a \$100 Gift Card for \$80!

Black Friday Sales

Many more
Smokin' deals
in-store!!

SKU# 453814

**Comfort Glow
Ashton Electric Stove**
Regular Price \$169⁹⁹
**SALE
\$129⁹⁹**

SKU# U122050

**Oversized
Velvet Throw
SALE
\$14⁹⁹**

MR HEATER
185,000 BTU Forced Air
Kerosene Heater

Regular
Price
\$645⁵⁹
**SALE
\$545⁹⁹**

SKU# U121552

Shop-Grade OSB
3/8 **SALE \$10⁹⁹**
7/16 **SALE \$11⁹⁹**

SKU# ECON38WB
ECON716WB

DEWALT

**Cordless Drill/Driver
20V Max Li-Ion Compact**
Regular Price
\$199⁹⁹
**SALE
\$149⁹⁹**

SKU# U761296

All sales limited to stock on hand.
Cash sales only; no house account charges.
Sale prices good
Friday, November 25th, 8am–5pm.

2022-2023

CENEX® GIFT CARDS

FOR GALLONS & OIL SALE



For every 100 gallons of premium Cenex® Lubricants you purchase, you can earn a

\$50 VISA® gift card

Products include: bulk and packaged engine oils, tractor hydraulic fluids & gear oils.

In addition to the Gift Cards for Gallons promotion, Southwest Grain is offering our annual oil sale.

10% off packaged oil products,
10% off select store equipment and
5% off bulk oil products.

Southwest Grain Petroleum
Office: (701) 483-5157
Savanna Meier: (701) 260-6415
Jared Bookhardt: (701) 260-5235
SWG Lemmon: (605) 374-3318

CHS

SWG

Southwest Grain

Dickinson | Gladstone | Richardton | New Salem | Elgin | Killdeer | New England | Reeder | Lemmon, SD thru 2-23

Liberty Dirtwork LLC

Specializing In Dirtwork

"FREE SITE ASSESSMENT"

Contact: Lee at 701-891-8212

Website: Libertydirtworkllc.com

Carson, ND

EQUIPMENT: Scrapers - Motor Grader - Excavator - Dozer - Loader
Dump Truck - Belly Dump - Lowboy and Skidsteer

Road Building - Site Work - Engineered Fills
Land Clearing - Drainage - Feedlots - Tree Row Removal
Lowboy Services - Dig Footings and Foundations
Demolition Services - Snow Removal - Gravel Available

Licensed and Insured



960 +/- Acres • Dawson & Wibaux Counties, MT

LAND AUCTION

Thursday, December 1, 2022 – 11:00 a.m. (MT)

AUCTION LOCATION: Gunner Ridge Bar & Grill • Glendive, MT

• 571.18 +/- Crop Acres

• 395.64 +/- Pasture Acres

• Parcel 1: N½ 9-17-52 (Dawson County)

• Parcel 2: S½ 33-17-52 (Dawson County)

• Parcel 3: W½ 17-14-59 (Wibaux County)

• Mineral Acres Sold Separately

– Contact Agents for More Information

• Online Bidding Available at pifers.com



OWNER: Robert Mullendore

This sale is managed by Pifer's Auction Company, Kevin Pifer, MT #16149. All statements made the day of the auction take precedence over all printed materials. The seller reserves the right to accept or reject any and all bids.

Pifer's AUCTION & REALTY

Kevin Pifer

701.238.5810

LESH & COMPANY

REAL ESTATE

406-234-1523

Monty Lesh

406.853.1523

11-19,26

Gift Card

Flash Sale

For one day only, get a \$10 savings when buying a gift card from up to 25 businesses. Simply visit bowmanchamber.square.site or stop by the Chamber office to purchase your gift cards. Limit of five gift cards per person.

Pay \$20 for a gift card worth

\$30

November 30



Bowman

AREA CHAMBER OF COMMERCE

For more information visit bowmanchamber.square.site.

WE ARE HIRING!

Propane and Refined Fuels Delivery Driver

Position Overview:

Looking for a driver to transport loads of petroleum and propane throughout our territory. The successful candidate will have a commercial driver's license with tanker and hazardous endorsements.

Responsibilities:

- Operate fuel truck in accordance with expected safety behaviors, road rules and regulations.
- Delivers product to customers based on orders received.
- Maintains logs of shipments for regulatory and sales management requirements.
- Communicates with Fuel Sale and Operations Coordinator to ensure inventory is available for delivery.
- Performs maintenance and minor repairs to truck.
- Performs other related duties as required and assigned by supervisor.

Basic Qualifications:

- Clean driving record.
- Able to obtain class A CDL with Hazmat and Tanker Endorsements.

WILLING TO TRAIN!

- Attendance and reliability are a must.

Preferred Qualifications:

- Class A CDL with Hazmat and Tanker endorsements
- Professional communication skills.
- Good work ethic.

Additional Details:

ProPoint Cooperative is an equal opportunity employer and offers Competitive Salary and benefits.

All interested applicants should email resume, questions and application to coryv@propointcoop.com or drop it off at the main office.

Pro Point Cooperative/Cenex

701-523-3268

Eido Connect

we're here to help you grow your business!

11,800 copies only publication with 100% coverage!!!

THE AFFORDABLE WANT AD CONNECTION

ABLE, INC. RECYCLING

101 North Main Street
Bowman, ND
701-523-5844

ALUMINUM CANS

25¢/LB

HOURS:
Monday – Friday
8 am to 4 pm

FOR RENT

FOR RENT: Apartments - One bedroom furnished for short term rental and a two bedroom unfurnished, Scranton, ND. Call Dale 701-523-8263 for details. TFnC

MISC.

House Cleaning Service, Mott and Regent area. Very experienced and professional. Call **701-209-0024**

11-12,19,26 pd

**Classified Ads
are only \$7.00**

FOR SALE

Nutra - Lix Supplements, liquid, barrels, and mineral all help you meet your cow's nutritional needs so important for a healthy developing fetus, rebreeding, and next years calf. Call **Knudson Feeds at 800-585-2444**

11-19,26-12-3,10

FOR SALE: 40 High quality black cross bred cows, 3/4 black and 1/4 to 1/2 shorthorn, moderate frame, milk, calving ease, the best bloodlines of 2 breeds, two year old - to 6 year olds bred to calf April 15th - for 60 days. Bred to Magnum Registered Black Angus. Plus 13 moderate frame heifers bred to same bull. Call **Lowell Larsen, Taylor, ND 701-290-0498.** 11-19,26

FOR SALE: 15 High Quality replacement heifer calves, black and blue roan, from the top cows. Call **Lowell Larsen, Taylor, ND 701-290-0498.** 1-26,-12-3c

FOR SALE: Thunder Struck Bumpers, Full Front end Replacements, Grille Guards & Rear Bumpers, Elgin ND. Call **Les Bartz 701-209-0309 Shannon Gerhardt 701-391-3011** thru 1-14c

KAY DEE's fall mineral sale continues thru Dec 15th, Buy 1 Get 1 FREE quality Weatherized mineral with True Chelates for complete balanced nutrition and improved production. Available at **Knudson Feeds in Hettinger 800-585-2444**

11-19,26-12-3,10

FOR SALE" Lorenz Snow Blower, rear mount, 540 PTO. Like new condition. Call **701-597-3864**

11-26-12-3c

FOR SALE: 10 Bred Simmental Heifers black and black white face. Bred to easy calving Simmental Bull. 1100# and to start calving March 1. Call **701-527-8657.** 11-26-12-3c

FOR SALE: 2013 Chrysler Town and Country Minivan. Excellent condition with less than 100,000 miles. It has good tires and has been well maintained. Call **701-567-3467** if interestd. 11-12,19,26c

FOR SALE

FOR SALE: Black Jack Russell terrier puppies for sale, eight weeks old and ready to go. Will be 8 to 12 pounds as adults, first shots and vet check located in Beach North Dakota. For more information please send a text with your name and question To 406-531-6525 and I will call you back as quickly as possible. 11/19,26c

FOR SALE: 1 - 8 HP Snowblower, 2 stage 8 HP, Used. \$450 OBO. Call 701-872-2728. 11/19-12/10c

FOR SALE: 1972 Circle H stock trailer, 6'x20', good floor with mats, LED lights, 14-ply tires. Asking \$1,800. Call 605-866-4882. 11/19, 26c

FOR SALE:

60 ft. Long Reach Cat 240 Excavator
Payloader with 3rd valve Bobcat A300
For Sale or Rent Vans
Gooseneck Flatbed Trailers LowBoys
48 ft. Wilson Flatbed
2 - Semi End Dumps
2 hyd. hanger doors, new Mack A400
3 Cat Engines - 3406E, 343, and 353
Overhead Shop Tramway Hoist 18x27, 2 ton capacity, new condition.
Self Contained Snow Blower sits on a Payloader
Semi Tractors
96 4700 IHC Mechanic Truck service box.
6 Standby Generators
Guard Rail \$3.50 per ft.
Sucker Rod 3/4", 7/8", 1" Also 2 3/8", 2 7/8" and 3" Pipe
New 2 " Gas Pipe, 40 ft. long
Poly Pipe 20 in. x 50 ft. long, weighs 2700 lbs. per joint, ideal for culverts
3 Cabin Boats
New 30 Gal. Totes - \$10 each
2005 Excursion Class A Motor Home
Call for more information.
New recapped tires, government surplus size 385/65x725 - 4 tires for \$1,000.00
Loyboy 60 ton Trailer
New tire chains fit 23.5 x 25 and 20.5 x 25
New recapped Truck Tire 385/65x225 18 ply.
245x75x16 New Bridgestone 10 ply tires, on 8 hole wheels \$175 each.
Located 11 miles South of Lemmon on 73
Call 605-374-5444 tfn

APARTMENT FOR RENT

VACANCY

The Carson Manor, in Carson, ND, is a Senior Citizen Independent Living Complex

- ALL apartments are ground level.
- Rental Assistance is available.
- Within one block of the business district and four churches.
- Daily on site meal program

For more information, call 597-3249, or email: albahm@westriv.com
TDD/TYY 1-800-366-6888



Spring Help Wanted

Competitive Pay

Full & Part Time Positions Available

Scranton Equity Agronomy is looking for qualified help to span our busy spring season. Full and Part Time Positions available. The spring field work season varies from the middle of March and continues through the middle of June. Of particular interest will be candidates who hold a current CDL license. Positions to fill will vary including operating application equipment, tendering product to the farms or fields, unloading or loading fertilizer and chemicals, general yard work to facilitate operations and providing service to customers throughout. Due to the seasonal time frame, pay will be competitive and based on the candidate's experience and qualifications.

Scranton Equity

Interested candidates should contact
Central Office at 701-275-8221
Phil Sulzman Office: 701-275-8124
Cell: 682-351-9626

MISC.

Nick's Taxidermy

- Deer & Antelope game heads
- Birds & Fish

No Furs
No Waterfowls

- 35 years experience •

Contact Nick Maher
701-206-0407 (cell)
701-523-5480 (home)
Bowman, ND TFnC

The Vertex IsoTwist™

- Undersink Reverse Osmosis
- Makes up to 50 gal/day
- EASY TWIST OFF, NO MESS, DISPOSABLE FILTER CARTRIDGES



Harvey Merz

Call 701-523-5557

FARM/RANCH

IN SEARCH OF: Pasture for 2023 and beyond. Young rancher looking for grass. Within 80-100 miles of Lemmon, SD. Call Jaden at 605-490-9308. 11/19-12/3c

Looking For Farm Land to Rent in the Hettinger, Regent, Reeder and Scranton areas. Call **701-928-1804.** tfn

Looking for Farm Land to Rent in eastern Hettinger or Western Grant County! **Austin Kautzman - 701-260-0723.** 11-12,19,26c

CONTACT US

Eido Connect:

Located at 17 E. Divide,
Bowman, ND
Phone : 701-523-4577;
Fax: 701-523-4579; Email: connect@ndsupernet.com
Hours: Monday - Thursday
8:30 am - 4:00 pm
Closed Friday

NOW HIRING

Frontier Travel Center
is looking for part-time Java help
Hours would be 4PM – 8PM

Perfect for high school students or someone looking for just a little extra income!

We offer competitive pay and flexible scheduling!

Visit our webpage or stop by the store to get an application

www.scrantonequity.org/travel-center

**FRONTIER
TRAVEL CENTER**

705 Hwy 12 West, Bowman, ND • 701-523-4737

HELP WANTED

Grant County

Soil Conservation

is hiring for a Full or Part Time Technician/Watershed Coordinator.

We are offering competitive wages, benefits and some flexibility in scheduling. Wages are based on experience.

For more information call

701-622-3381 Ext.3 or email:

grantscd@westriv.com

for mor details and application. tfn

DID YOU KNOW that not only more of
does newspaper media reach

NDSU Extension Service-Hettinger County Administrative Assistant – Part-time

Hettinger County is accepting applications for a part-time, Administrative Assistant that will serve as the administrative support associate for the Hettinger County/ NDSU Extension Department, 4-H Youth Development, and similar Extension programs.

Must have a High School Diploma, a valid Driver's License and be able to clear screening for 4-H Youth Protection. Experience with computers, Microsoft Office Suite programs, social media, receptionist duties, and database management preferred.

Skills of being detail-oriented, working in a fast paced environment and having a passion for assisting local farming and ranching families is a must.

This position will be a minimum 30 hours per week with additional hours as needed during certain times, flexible work schedule and will include some benefits.

Qualified applicants can deliver or mail their resume along with references to the

**Hettinger County Courthouse,
at 336 Pacific Avenue in Mott, ND 58646.**

If you have any questions, please call (701)824-2515 or email Sondra Bullinger at sbullinger@nd.gov.

Application deadline is November 30th, 2022.

Hettinger County is an Equal Opportunity Employer.

11-19,26

SNOW REMOVAL

EMPLOYMENT OPPORTUNITY

Adams County is seeking applications for a part-time position for this season's snow removal. The individual would be responsible for the removal of all snow on County owned sidewalks around the Courthouse complex.

Applications can be printed off our website (www.adamscountynynd.com) or picked up from the Auditor's Office.

Please contact the Auditor's Office with any questions, (701)567-4363

Adams County is an equal opportunity employer.

11-26,12-3,10,17

Employment Opportunity

Adams County Road Superintendent & City of Hettinger Public Works Supervisor

An aggressive, imaginative individual is needed to direct and coordinate all activities in an integrated County-City arrangement.

City duties will include the year-to-year maintenance and repair of 12.5 miles of asphalt streets and overseeing water and waste water maintenance activities for a city of 1300 population.

Applicant must be able to supervise the overall maintenance of 314 miles of County roads, 34 of which are asphalt, and 178 miles of unorganized township roads, and employees.

Applicant must have a working knowledge of heavy equipment maintenance and repair as well as related activities. This individual must like administrative duties, public relations work, and supervision of employees. Computer experience is preferred. Position will be paid on experience. Annual salary range is \$55K to \$75K, plus benefits. Applications available on the County website: www.adamscountynynd.com, the Auditor's Office, or the County Shop

Adams County is an equal opportunity employer
Employment Opportunity Highway Supt/Job Description/ My Documents

11-26-12-3,10,17

As long as there's a few farmers out there, we'll keep fighting for them

SCHOCK REAL ESTATE

124 Main Avenue South, PO Box 239, New Leipzig, ND 58562

www.schockrealestatend.com

Martin F. Schock, Broker/Realtor® - New Leipzig - 701-400-1401 (c)
Colleen Vetter, Realtor® - Elgin - 701-220-6585 (c)

See all our listings on the web or Facebook and give us a call today.

NEW!! 5 acres, +/- farmstead, just 3 miles from Highway 21/49 at 6849 73rd Ave SW, New Leipzig, ND. 3+ bedroom home, with attached single garage. 1200+ sq. ft. with re-modeled kitchen/bath and living room, ground floor laundry and full basement. Propane forced air heat and central air. Farmstead includes a 32'x56' shop, 14'x30' horse loafing barn with tack room, 20'x40' pole barn, well and Southwest Rural Water. Grain bins in photos NOT included. Listed at just **\$189,900!!** Call today for this opportunity!!

A one story, 1138 sq. ft., two bedroom home located at 411 1st Ave. SE in New Leipzig, ND. Newer furnace, water heater, siding and shingles. Comes with appliances and some furniture. Two non-conforming bedrooms in basement. Double detached garage and backyard storage shed. Large corner lot with room for expansion. Yard has great shade trees. All this for just **\$44,900.** Make an offer!!

Two main floor bedroom home at 205 1st Ave. NE in Elgin, ND. 1 non-conforming bedroom in the partially finished basement. Full bath, plus ¾ bath in basement. Approximately 936 sq. ft. single story ranch. Metal siding, single attached insulated garage. Fuel forced air furnace with central air. Comes with refrigerator, kitchen range, dishwasher, built in microwave, washer/dryer (just off kitchen area), ceiling fans and window treatments. Listed at just **\$65,000.**

An older 1 ½ story home for sale at 206 South Main ST in Elgin, ND 58533. The approximate 1600+ sq foot home features an open staircase as you enter the home. Main floor has a living, dining & kitchen areas, half bath, laundry & storerooms. An 11' X 11' deck leads to the yard. Second floor has 3 bedrooms and a full bath. A partial finished basement has a family room, nonconforming bedroom and ¾ bath. There are several sheds included along with a car port. Propane forced air heat with central air. Some appliances included for a list price of **\$52,500.** All offers will be given consideration.

Historic two story home located at 104 4th Ave. NE in Elgin, ND. ½ bath on main floor, remodeled bath with walk-in shower on second floor with 3+ bedrooms. Kitchen, formal dining room, butler's pantry, living room, sitting room with fireplace that has fans for air circulation, hardwood floors refinished, beautifully refinished quarter-sawn oak woodwork on the main floor. Extensive remodeling. Lots of room and storage! Two stall detached garage with openers. Newer shingles, siding, newer plumbing, kitchen remodeled. Some appliances included. Partially finished basement. This is a home with character, style and charm. Listed at just **\$160,000!** Call today to schedule an appointment.

Investment opportunity! An 8 unit apartment building. Building includes six 2 bedroom and two 1 bedroom apartments. Each unit has appliances, A/C, & electric heat with separate meters. Two laundry areas service the building. Property includes 4 garages, an underground tornado shelter, and a storage shed. Located at 202 4th Ave NE in Elgin, ND 58533, close to Elgin's local hospital. A reasonable investment at a PRICE OF **\$175,000!!!**

Here is a 1960 ranch style, 2-bedroom home of approximately 970 sq feet (main floor only) located on a corner lot at 414 Montana St in Carson, ND. The home has 1 ¾ bath and an open floor plan with the kitchen, dining and living room areas. Hardwood floors are throughout the home The basement is partially finished. The home was remodeled in the mid 80's. The yard is private with trees on the north and west side of the lot. Property includes a 14' x 24' unattached garage. Appliances included. In addition to the home, is a vacant lot of 50' X 140', that has access to city water and sewer. The lot would be suited for new construction after clearing trees and an older building. The lot is conveniently located across the street from the home at 302 4th Ave NW. The list price for both parcels is **\$39,500.** However, the lot can be purchased separately if desired. All offers will be given consideration.

Too expensive to build? Check out this 3 bedroom country style house to be moved at Buyer's expense. The house is 2 story of approximate 1200 square feet with hard wood floors. Two bedrooms are on the second floor with a commons area between the two bedrooms. Main floor includes one bedroom, bath, living and dining room areas and kitchen addition. Walls are mostly lathe and plaster. This house needs a new owner and location. PRICE REDUCED TO **\$5,000!!**

This approximate 1200 + sq foot home is located on a corner lot at 404 East 2nd St, Mott, ND 58646. The home features a spacious dining, kitchen and living room areas. Laundry is conveniently located off the kitchen. The home has 1 bath and 1 bedroom (potential 2 non-conforming bedrooms) depending on your needs. The yard includes river irrigation, a garden shed and unattached garage. Appliances included for a list price of **\$58,900.**

Here is a wonderful business opportunity for any individual or family. A 20-acre +/- farmstead with pine and fruit trees, house, out buildings and some cultivated acres. The prime business building of the farmstead is a 40'X50' steel building that currently is used as a honey house. The building was built in 2017 and is currently equipped with all the equipment needed to extract honey. However, the building could be used for multiple business opportunities as the building is heated, has a concrete floor, water, and its own sewer system. A 16' X 24' room within the building has a heated floor and is currently used to warm the honey before extraction. The building has two overhead doors; one leading to a loading dock and the other to another 36' X 60' foam insulated metal building (with concrete) currently used to house additional bee boxes and extracted honey. Owners have recently seeded approximately 10 acres of alfalfa and have 50 registered bee sites within a 50-mile radius for those interested in using the farmstead as a bee farm. Farm is serviced by well water; however, a connection to rural water is available for an additional fee. The 2-bedroom home is an approximately 1658 sq. foot Bonneville mobile home on post/pillars with a 12' X 36' addition that overlooks the beautiful farmstead. The home has a second addition of an attached 36' X 28' double car heated garage. The farm is located 2 ½ miles from Elgin, N D. The asking price of the complete bee farm is **\$999,500.**



Thursday, December 1, 2022-Feeder Cattle 10am.
Hoffman & Bulgin-600 Blk Strs & Replacement Quality Hfrs, All Heifers in Town, SFS, NI, No Creep, 500-625 lbs.
Berger-350 Blk Strs & Hfrs, SFS, NI, No Creep, 425-525 lbs.
Bowen & Mettler-310 Blk/Bwf Strs & Hfrs, SFS, NI, No Creep, 475-600 lbs.
Van Dusen-200 Blk Strs & Hfrs, SFS, No Creep, 450-550 lbs.
Breiner- 200 Blk Angus/SimmX Strs & Hfrs, SFS, NI, No Creep, 500-600 lbs.
Vescovi Ranch- 180 Blk/Bwf Strs & Hfrs, SFS, NI, No Creep, Hfrs Bangs Vacc, 550-650 lbs.
Disrud-180 Blk Strs & Hfrs, SFS, NI, No Creep, 500-600 lbs.
Lauinger-150 Blk Strs & Hfrs, SFS, NI, No Creep, 475-575 lbs.
Kerzmann-150 Blk/Bwf Strs & Hfrs, SFS, NI, NC, 525-625 lbs.
Wittmayer/Fretheim-140 Blk & Red Strs & Hfrs, SFs, NI, No Creep, 525-625 lbs.
Walker-130 Blk SimmAngusX Strs & Hfrs, SFS, NI, No Creep, DF, 525-625 lbs.
Hovda-120 Blk/Bwf Strs & Hfrs, SFS, NI, No Creep, 500-575 lbs.
Gosch Farms-120 Blk Simm Angus Strs, SFS, NI, 500-650 lbs.
Biegler Ranch-1 Load of Blk Strs, 3 Rounds of Shots, Weaned on Grass Hay for 45 Days, 550-575 lbs.
Igehart-110 Blk Strs & Hfrs, SFS, NI, No Creep, 525-625 lbs.
Hunnell-100 Blk/Bwf Strs & Hfrs, Weaned, SFS, NI, 500-600 lbs.
Perman-100 Blk/Bwf Strs & Hfrs, SFS, NI, No Creep, 500-600 lbs.
Schafer-100 Strs & 50 Hfrs, Blk/Bwf SFS, NI, No Creep, 525-625 lbs.
Rossow Ranch- 100 Blk Strs & Hfrs, SFS, 500-600 lbs.
Johnson-95 Blk/Bwf Strs, SFS, NI, 600-700 lbs.
Lelm-70 Blk Strs & 20 Hfrs, SFS, NI, No Creep, 550-650 lbs.
Thomas-90 Certified Red Angus Strs & Hfrs, NI, NC, SFS, 550 lbs.
Alley-80 Blk Strs & Hfrs, SFS, NI, NC, 500-600 lbs.
Holzer-50 Red Strs & Hfrs, SFS, NI, No Creep, 500-600 lbs.
Perman-75 Blk Strs & Hfrs, SFS, No Creep, 475-625 lbs.
Ehlers-70 Blk/Bwf Strs & Hfrs, SFS, NI, No Creep, 500-600 lbs.
Larson & Geigle-55 Blk Angus Strs & Hfrs, SFS, NI, 450-600 lbs.
Peterson-55 Blk Strs & Hfrs, SFS, NI, No Creep, 550-650 lbs.
Scherbenske-50 Blk Strs & Hfrs, SFS, NI, No Creep, 500-600 lbs.
Dehaven-50 Blk/Bwf Strs & Hfrs, SFS, NI, No Creep, 550-650 lbs.
Schaeffer-40 Red Angus Strs, SFS, 550-650 lbs.

mobridgelivestock.com

Contacts:

Jason Anderberg: (605) 848-0038
Tigh Anderberg: (605) 845-4877
Casey Perman: (605) 848-3338
Cole Mettler: (605) 519-1683
John Hoven: (605) 848-3507
moblvstk@westriv.com - Mobridge Livestock Market
PO Box 190 - - Mobridge, SD 57601

Thoughts of the Week

by June Schmidt

Songs over the years change and they do reflect the times in which they are written. There have always been songs of love over the generations but there are all kinds of songs that were written from things that were happening in the world.

Songwriters are much like writers of books or articles. They often are commentaries of the state of the world or the surroundings of where they live. The Beach Boys wrote of sand and surf and girls having fun. The songs were lighthearted and full of the joys of being young and they were not alone. Many songs of that time are the same and it was also a time of boy bands such as the Archies, the Monkees and others that popped up with one hit and drifted away in time. Songs such as Light my Fire by the Doors was controversial because of their lyrics so it became popular with the kids of that time. I remember our band leader in high school letting us march to that tune instead of the 'golden oldies' of the prior years and of course we were thrilled about it. Not sure all our parents agreed, but it sure made us feel more modern.

The 60's and 70's were also a time of protest with songs like Sounds of Silence with Simon and Garfunkle and Imagine by the Beatles, War by Edwin Starr and Where Have all the Flowers Gone by Pete Seegar that brought up topics that were not popular with all. Yet it was also a time of love and Flower Power with songs such as Come Together and All you Need is Love by the Beatles, and Aquarius/Let the Sun Shine in by the Fifth

Dimension. It was a time when young people felt like their voice was finally being heard. Make Love not War was a popular bumper sticker on the vans of the day and it was popular for girls and guys to grow their hair long and of course there was the unforgettable musical Hair which had to have the one song that fathers of that time absolutely hated.

The protests were not always peaceful and there were songs that told of those times. Eve of Destruction by Barry McGuire, Ohio by Crosby, Stills, Nash and Young, Fortunate Son by Creedence Clearwater Revival and Give Peace a Chance by John Lennon were just a few. After the death of John F Kennedy, the song Abraham, Martin and John was sung by Dion which was a commentary

on the loss of those that wanted change.

The whole point of this is that songs have been written to express a sentiment and continue to be sung over the years in remembrance. Songs have been written by many different people so if I have missed one that was important to you in your years, please forgive me as these are the ones that have stuck in my mind. When we sing a song that we remember, we generate a memory of a time when we are happy or sad or something that was important to us, so that means that somewhere a songwriter hit a note that we needed in our lives. Maybe with a little more music and a little less argument, we can make the world a better place. Anything is possible, so Sing it Loud and Sing it Strong. God Bless you all.

CAMPBELL SEED



Serving you since 2012

Tyler or Kristy Campbell

605-848-6282 or 701-226-8599



PROSEED



WANTED PUBLIC TRANSIT DRIVER

Prairie Hills Transit of Lemmon is looking for an individual over age 25 with strong customer service to be part of our team - CDL is NOT required. Part-time dayshift - NO WEEKENDS - \$13.75/hour. Apply at www.prairiehillstransit.com or call 605-642-6668 for more information.

Seamless Steel Siding
Seamless Gutter
LP Hardboard Siding - Decks
Versetta Stone - Windows
Doors - Patio Doors


HAUSAUER
SEAMLESS PRODUCTS LLC
Lemmon, SD 605-374-7373



John Hausauer - SD Sales Rep
Neal Pinnow - ND Sales Rep

Call Today for a Free Estimate!
hausauerseamlessproducts.com



Lorine Huber Rites Held

Lorine Huber, age 94, of Bentley, ND, passed away on Tuesday evening, November 1,



2022 at the 5 Counties Nursing Home in Lemmon, SD.

Funeral services for Lorine were held at 11:00 a.m. on Monday, November 7, 2022 at the Prince of Peace Chapel of the Evanson Jensen Funeral Home in Lemmon, SD. Burial at the Bentley Cemetery was held at 2:30 p.m. Monday afternoon.

Lorine Lena Bertsch was the eldest born in Burt, ND, on October 31, 1928, to Emanuel and Christina (Breindeinbeker) Bertsch. She attended a country school north of Burt, ND, then when the family moved to a farm east of Mott, ND, she went to Mott Grade School, graduating from the 8th grade. Lorine was always hoping she could go to high school, but since she was the eldest, her mom needed her to stay home and help around the farm. She tended

to the turkeys, shucked corn, helped in the fields with her dad and around the house with her mom taking care of her siblings, Julius, Anna, and Ervin.

Lorine was united in marriage to Marvin Huber on November 25, 1948, at the Mott Congregational Church. They lived in a small two-bedroom house on the George Huber Sr. farm for three years, then moved in 1951 to the Rudy Rosen farmstead for six years and there they were blessed with three children, Judy, Gene, and Dale. Then again moving but settling to the John and Tillie Korn farmstead in 1957 where they were blessed with five more children, Dave, the twins Rory & Cory, Mark, and Lori.

Marvin and Lorine shared 52 years of marriage before Marvin passed away in 2005. Lorine continued living on the farm with one of her twin sons, Cory, until her health declined, moving into the Five Counties Nursing Home in Lemmon, SD, in February of 2017.

Lorine was a strong good-hearted lady, always caring about her family, friends, and neighbors before herself. She helped Marvin in the fields, milked dairy cows for 62 years, raised chickens, and sold the cream and eggs to rural towns and neighbors. She was a true hearted German, baking homemade bread and buns, cinnamon rolls, kuchen, fry bread, fleishkeuchle, strudels, blatchindas, and most importantly, making sure whomever stopped by would always have something

to eat.

Lorine's saying when anyone was leaving would be "We will see you when we see you." So yes, our dearest mother, grandmother, great-grandmother, great-great-grandmother, aunt, neighbor, and friend, we will see you again someday in heaven.

Lorine is survived by her eight children, Judy Huber, Lemmon, SD, Gene (Lynn) Huber, Faith, SD, Dale Huber, Mott, ND, Dave (Toni) Huber, Lemmon, SD, Rory (Becky) Huber, Bowman, ND, Cory Huber, New Leipzig, ND, Mark Huber, New Leipzig, ND and Lori (Gary) Daley, Lemmon, SD; eight grandchildren, Ryan, Amber (Jason), Kenny (Nicole), Ashley (Mike), Skyler (Chelsea), Robert, Morgan (Sterling), and Trent; thirteen great-grandchildren, Dameon, Skylar, Jasmine (Cade), Ty, Natalie, Kayden, Norah, Finley, Owen, Sutton, Mallie, Everly, and one more coming in March of 2023; one great-great grandchild, Oliver; sister-in-law, Wilma Huber; and numerous nieces, nephews, friends, neighbors and the Five Counties Nursing Home Family.

She was preceded in death by her parents; husband Marvin; two brothers and sister-in-law, Julius (Irene) Bertsch and Ervin; one sister, Anna (Fred) Looock; brothers-in-law and sisters-in-law, Ida (Willard) Monahan, Della (Emil) Walton, Frank (Freda) Huber, Francis (Walter) Atkinson, George Huber Jr.; two nephews; and other relatives, neighbors, and friends.

Condolences may be sent through our website at www.evansonjensenfuneralhome.com.

Beverly LeFebre Rites Held

Beverly LeFebre, age 86, of Lodgepole, SD, passed away on Saturday, November 12,



2022 at the Western Horizons Care Center in Hettinger, ND.

Funeral services for Bev were held at 10:30 a.m. on Saturday, November 19, 2022 at the Holland Center Christian Reformed Church southwest of Lodgepole, SD, with Rev. Brad

Burkhalter officiating. Burial followed in the Holland Center Cemetery.

Beverly Darlene LeFebre went to be with the Lord Saturday, November 12, 2022, at Western Horizons Care Center in Hettinger, North Dakota.

Bev was born to Harry and Viola Doerr on September 21, 1936. The eighth of nine children, she grew up on the Doerr family farm near Lodgepole, South Dakota. There are several tales of the shenanigans the Doerr kids were involved in growing up. Standing proud at the height of 5'10", she often joked that after having six boys, her mom didn't know how to make a girl. After graduating from Hettinger High School in 1954, she attended Black Hills Teachers College and earned her teaching certificate. During her time in Spearfish, she was part of the Black Hills Passion Play cast. She taught full-time for several years, and would later substitute teach, serving the one-room country schools throughout the Lodgepole community's Northwest School District.

On August 18, 1956, Bev married Gordon Dragoo. In 1960 their daughter, Lana Sue, was born. Three years later, to the day, they welcomed their son, Ronald Gordon.

Bev married James LeFebre on November 11, 1975. They spent their first anniversary in the hospital celebrating the birth of their daughter, Carol Ann. Their family was made complete with the arrival of Mark Alan in 1979.

Jim and Bev worked side by side on their farm south of Lodgepole. Bev could be found in the field mowing, raking, or hauling bales during haying season, running the combine or driving the truck during harvest, and feeding and caring for the animals year-round. She was always willing to lend Jim a hand or keep him company while working in his shop late into the evening and had a knack for locating parts or tools he lost or mislaid.

Bev tended bountiful gardens and beautiful, lush flower beds. She enjoyed crafting, sewing, and quilting - gifting all to family and friends. Bev wrote decades worth of journals recounting the simple happenings of each day - the weather, the work that had been accomplished, visitors who'd stopped by, and the random trips to town. She also wrote poetry to honor special occasions. Bev and Jim shared a love for music - from harmonizing with the radio when riding across the prairie, to singing together in church, music was ever-present in their lives. Perhaps Bev is best known for her talents in the kitchen. She could whip up an entire meal out of nothing when company stopped by, and she always had a stash of baked goodies at the ready when neighbors dropped in for coffee. Whether taking lunch out to Jim and the kids working in the field, delivering a freshly baked pie to a neighbor on their birthday, or getting up before dawn to fry up donuts for the

entire volleyball bus, cooking for others brought her so much joy. It was a passion she passed on to several of her children and grandchildren.

Bev treasured the tranquility of working in her garden on a cool summer evening, or being on the tractor out in the field at daybreak, raking alfalfa when the conditions were "just right." She wrote, "It seems, as the sun comes up, the birds and farm animals start scouting around for food and drink. The sounds of the birds in the trees can get pretty loud at times, but they are happy for a new day." She savored the beauty of the sun rising and setting over their little farm in the valley, and the evidence of God's delicate touch on the frost-covered trees of a winter morning. But the thing Bev delighted in most was family. And whenever her family was gathered, there was never a shortage laughter, good conversation and delicious food!

Bev leaves as her legacy faith in Christ, the value of hard work, the love of music, the gift of good cooking, making do with little, generosity, selflessness, and sacrifice, finding enjoyment in the simple things, and the love of family. Jim and his "Bevvy" were inseparable in life, and their love and devotion to one another was evident to all and true to the end.

Left to traverse this life without her are her loving husband, Jim; children Lana (Jamie) Ellenwood, Ron (Brenda) Dragoo, Carol (Mike) Stolley, and Mark (Dodie) LeFebre; grandchildren Erin (Adam) Fahrner, Jordan Frey, and Ryan (Brianna) Ellenwood, Christopher (Ginger) Dragoo, Stephen (Kerry) Dragoo, and Heather (Jeb) Boxrud, James and Kathryn Stolley, and Lily LeFebre; great-grandchildren Bella, Aubrey, and Emilia Fahrner, Layla and Madison Dragoo, Jason Dragoo, and Briggs, Hartley, Gordey and Fitzgerald Boxrud; a dear sister, June (Bill) Stevens and brother Ken (Vada) Doerr; and countless nieces and nephews.

Welcoming her to her eternal home are her parents Harry and Viola Doerr; siblings Margaret Johnson, Walter Doerr, Dale Doerr, Vaughn Doerr, Alan Doerr, and Gene Doerr; and a niece, Debra Doerr.

Condolences may be sent through our website at www.evansonjensenfuneralhome.com.

Elsie Turbiville Rites Held

Funeral Services for Elsie Turbiville, 89, of Bowman, formerly of Camp Crook, SD were held at 10:00 am, Friday, November 25, 2022 at Bowman Lutheran Church with Terry Bagley officiating. Burial followed in the Fairview Cemetery, Camp Crook, SD.

Elsie passed away on Saturday, November 19, 2022 at Fallon Medical Complex in Baker, MT.

Elsie was born December 15, 1932, five miles south of Camp Crook, SD in Harding County, the daughter of Walter



Elroy and Mary Atla (Fosberry) Stuart. She grew up and attended school at the Plainview Country School through the 6th grade. The family then moved to Ekalaka, MT where Elsie completed her schooling, graduating from Ekalaka High School. On October 31, 1949, Elsie and Harry J. Turbiville were united in marriage in Ekalaka. Elsie and Harry ranched northwest of Camp Crook, SD at the foothills of the Long Pines until May 18, 1961, at which time they moved to a ranch south of Marmarth, North Dakota in Bowman County. Elsie was a CNA at the Nursing Home for seven years in Beulah, ND and she helped cook Senior Meals for four and half years in Bowman, ND. She also enjoyed making flowers and decorating cakes for birthday, wedding, anniversary and miscellaneous events. She taught Sunday school at both the Baptist and Bible Church over the years. Elsie was a 4-H leader and she also took care of elderly people in the community through the years. Elsie especially loved taking care of her grandchildren.

Elsie is survived by her sons, James (Sheryl) Turbiville of Rhame, ND, Walter (Beverly) Turbiville of Dickinson, ND; daughter, Mary Kraft of Dunseith, ND; 10 grandchildren and 20 great-grandchildren; sister, Mary June (Paul) Stuart of Jamestown, ND; sisters-in-law, Greta Turbiville, Mary Lea (Stanley) Nygaard, and Ida Berreth.

Elsie is preceded in death by her parents; step-mother, Katherine Stuart; husband, Harry (2012); son, Larry Turbiville; sisters, Regina (Eddie) Bruha, and Nellie Stuart; brothers, Harold Stuart, William "Bill" Stuart, and Edward Stuart; granddaughter, Angel Darlene; great-grandson, Calvin Stuart Steeke.

In lieu of flowers, Elsie suggests a donation to an organization of your choice or Calvin's Scholarship Fund.

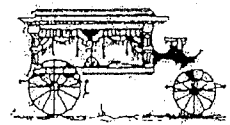
Remembrances and condolences may be shared with the family at www.stevensonfuneralhome.com

Stevenson Funeral Home Baker, MT

The two most powerful forces in the world are love and prayer. Use them!

Evanson Jensen Funeral Home

•Lemmon, SD •Faith, SD •Hettinger, ND •Mott, ND •Elgin, ND
605-374-3805 605-967-2805 701-567-2522 701-824-2693 701-584-2644



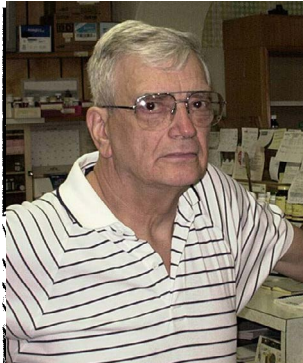
*Serving the West River Country with
dignity and caring since 1912*

www.evansonjensenfuneralhome.com
Greg Jensen • Ray Huber • Directors

**The most important thing in the world
is family and love.**

Burnell H. Svihovec Rites Held

Burnell H. Svihovec, age 90 passed away on November 13th, 2022 in Billings MT. Burnell was born September



18, 1932 in Mott ND to Henry & Joyce (Kokemo) Svihovec. He was raised on the farm Southwest of Mott ND. He attended a country school at Maine Country School. He graduated from Mott High School in 1951 and enrolled in college at the North Dakota Agricultural College (now known as North Dakota State University) where he received his Diploma with honors as a Registered Pharmacist in 1956.

Burnell married Norma Teresa Miller, a Mott native on August 18, 1958. During the beginning years of Burnell's career as a pharmacist the family moved from Mott, ND, to Glendive, MT, to Miles City, MT, to Circle, MT, until settling down in Terry, MT and purchasing the Terry Drug Store in 1965 until retirement in 2001.

Burnell's hobbies included fishing, hunting, target shooting, reloading, coin collecting, walking, playing cards, crossword

and sudoku puzzles.

After retirement, Burnell spent his time caring for Norma due to health issues until her passing on April 27, 2014. Shortly after that, his health deteriorated to where he needed assisted living until his passing.

Burnell is survived by his daughter Vicki (Jeff) Makelky of Big Piney, WY, sons, Bernie (Kim) Svihovec of Mesquite, NV, and Mitch Svihovec of Billings, MT, grandsons, Aaron (Megan), Eric (Emily), and Calvin Makelky; and two great grandsons, and three great granddaughters. He is also survived by one sister-in-law, Loretta Svihovec of Mandan, ND, and numerous cousins, nieces & nephews. He was preceded in death by his wife, Norma, parents Henry and Joyce, sister Darlene (Bill) Braun, and brother Gary.

Visitation was held on Tuesday, November 22, 2022 from 1:00 p.m. to 6:00 p.m. at Stevenson & Sons Funeral Home in Terry followed by a Rosary service at 6:00 p.m. Mass of Christian Burial was held on Wednesday, November 23, 2022 at 10:00 a.m. at the Sacred Heart Catholic Church in Terry. Rite of Committal followed in the Prairie County Cemetery next to his wife Norma. A luncheon followed at the Sacred Heart Catholic Church. Condolences may be sent to the family by visiting: www.stevensonandsons.com. In lieu of flowers, memorials may be made to the Prairie Community Hospital Foundation, P.O. Box 156, Terry, MT 59349 or to the Sacred Heart Catholic Church, 302 S McDonald Ave, Terry, MT 59349.

INTEGRITY ENTERPRISES LLC
Chad Gappert, Owner/Operator
701-219-5595
New Septic System Installation and Existing System Repairs, Sewer and Water Installer, Water Pipelines, Rural Water Installer, Water Well Contractor, Tree Line Removal, Snow Removal, all Things Dirt Work
 Licensed and Insured

Dr. John Sanderson
Dentist

306 N. Main
 Elgin, ND 58533
 Phone: 701-584-2580

YOUNG GUNS CONSTRUCTION
 - Office -
605-576-3301
 - Hunter Kalisiak -
701-523-1289
 - Cody Holmes -
605-200-0532
LUDLOW, SOUTH DAKOTA

FOR ALL YOUR BUILDING AND DIRT MOVING NEEDS

Charlie's Angels of Caring LLC

Charlotte Lee • Owner

We are looking for full-time and part-time staff for overnights and some days.
We provide care and companionship for elderly and disabled people in the comfort of their own home.

Phone: 1-701-567-3173 **Hettinger, ND**
Fax: 1-701-567-6552
Charlottelee945@gmail.com

701-523-7707
 16 W. Divide • Bowman, ND

20 - 1st Ave. SW **Weston Hafner, D.D.S.**
Bowman, ND **Caitlin Hafner, D.D.S.**
701-523-5651 <http://www.dakotadentalcenter.com>

NOTICE TO BIDDERS

Sealed bids will be received by the Board of the, Mott Airport Authority, in two separate locations. Sealed bids can be MAILED to the home Airport Manager, Derek Mayer, 9118 Highway 21 Mott, North Dakota, 58646, or HAND DELIVERED immediately prior to the bid opening at the Mott Armory, 507 Brown Avenue, Mott, North Dakota until 2:00 pm (local time) on the 8th, day of December, 2022, at which time they will be publicly opened and read, for furnishing all equipment, labor, and materials as set forth in the specifications and performing all work, incidental thereto for Airport Terminal Building, Mott Municipal Airport, Mott, North Dakota.

A Pre-Bid Conference will be held at 2:00 p.m. (local time), November 29, 2022 via Go-To-Meeting. From your computer, tablet or smartphone: <https://meet.goto.com/654140909> You can also dial in using your phone.

Access Code: 654-140-909

United States: 1 (872) 240-3212

The conference is intended to clarify any questions regarding bidding and/or construction requirements. All interested contractors, subcontractors, and suppliers are encouraged to attend.

Base Bid

Primary Work: This project shall include construction of a new 480 sf GA Terminal Building with grading, foundations, seeding and other items. This project also includes the construction of an access road (±20' wide x 180') and parking lot (±55' x 60').

Alternate Bid No. 1

Primary Work: Alternate Bid No. 1 includes paving the access road and parking lot.

- Plans and Specifications: Copies of the Plans and Specifications are available for inspection at:

Office of Helms and Associates, 416 Production Street, Aberdeen, South Dakota or by calling the Airport Manager at (701-260-3525).

Plans and Specifications may be obtained, at the Office of the latter, upon payment to Helms and Associates for shipping and handling in the amount of \$100 for an 11" x 17" size set of plans and specifications.

Plans and Specifications may be retrieved by registering with the Issuing Office at <http://www.helmsengineering.com/biddocs.html>. Following registration, complete sets of Plans and Specifications may be downloaded as portable document format (PDF) files. **Users who have downloaded the Plans and Specifications will be mailed an invoice of \$20.00.** All payments are non-refundable.

Additionally, upon request, in accordance with North Dakota Codified Law 5-18B-1, one copy of Plans and Specifications shall be furnished, without charge, to each Contractor resident in North Dakota who intends, in good faith, to bid upon the project.

- Bid Guarantee: Each bid must be accompanied by a certified check, cashier's check or draft in the amount of five percent (5%) of the total bid, and drawn on a solvent State or National Bank, or a ten percent (10%) Bid Bond issued by a surety authorized to do business in the State of North Dakota and payable to the Mott Airport Authority, North Dakota.
- Contract Bonds: Separate Payment and Performance Bonds guaranteeing faithful performance of the Contract and payment of all labor, materials, rentals, etc., will be required for an amount equal to one hundred percent (100%) of the amount of the Contract. All bonds must be issued or co-signed by a licensed resident agent of North Dakota.

- Commencement and Completion: The Engineer will set the beginning date in a written "Notice to Proceed with Construction". The Contractor shall begin the work within ten (10) days of the date set forth in the written "Notice to Proceed" and shall complete the work within the number of calendar days, working days, or completion date or dates as shown in the Specifications.
- Title VI: The Mott Airport Authority, in accordance with the provisions of Title VI of the Civil Rights Act of 1964 (78 Stat. 252, 42 USC §§ 2000d to 2000d-4) and the Regulations, hereby notifies all bidders or offerors that it will affirmatively ensure that any contract entered into pursuant to this advertisement, disadvantaged business enterprises will be afforded full and fair opportunity to submit bids in response to this invitation and will not be discriminated against on the grounds of race, color, or national origin in consideration for an award.
- Minimum Wage Rates: The successful bidder will be required to comply with all applicable Federal Labor Laws, including the minimum wage rates decision of the United States Department of Labor.
- Affirmative Action: A Contractor who may be awarded a contract of \$10,000 or more and subcontractors who may be awarded a subcontract of \$10,000 or more will be required to maintain an affirmative action program, the standards for which are contained in the advertised specifications.
- Award of Contract: The right is reserved, as the interest of the Mott Airport Authority, North Dakota, may require, to reject any and all bids, to waive informality in bids received, and to accept or reject any items of any bid, unless such bid is qualified by specific limitation.
- The contractor will certify that he and any of his subcontractors meet the requirements of 49 CFR, Part 29, regarding debarment, suspension, ineligibility and voluntary exclusion as further described in these specifications.
- The contractor will certify that he and his subcontractors will comply with the 49 CFR, 30.17, regarding Foreign Trade Restrictions as further noted in project specifications.
- The contractor will certify that he and his subcontractors will comply with "BUY AMERICAN CERTIFICATION (JAN. 1991)" as further noted in project specifications.
- The contractor will comply with "BUY AMERICAN-STEEL AND MANUFACTURED PRODUCTS FOR CONSTRUCTION CONTRACTS (JAN. 1991)" as further described in project specifications.
- If an applicant (corporation) has either unpaid Federal tax liability or has been convicted of a criminal violation under any Federal law within the preceding 24 months, the applicant is ineligible to receive an award unless the sponsor has received notification from the agency suspension and debarment official (SDO) that the SDO has considered suspension or debarment and determined that further action is not required to protect the Government's interests.

MOTT MUNICIPAL AIRPORT AUTHORITY, NORTH DAKOTA

BY _____ /s/ Derek Mayer

 Airport Manager
 Title

~ School News ~
Elgin/New Leipzig Public School

Monday, November 28

Elig Due @ 8:20
BBB Begins

Tuesday, November 29

JH GBB @ New England @ 4:00
JH BBB @ Bowman County @ 4:00
GBB AB vs New Salem/Almont @ Elgin @ 5:30
No Open Swimming

Wednesday, November 30

Adult Water Aerobics 3:30 - 4:30 & 5:30 - 6:30

Thursday, December 1

JH & HS GBB - BBB Pictures @ 3:30 Locaton TBA
No Open Swimming

Friday, December 2

JH GBB vs Richardton/Taylor @ Elgin @ 4:00
GBB AB vs New England @ Mott/Regent @ 5:30

Saturday, December 3

JH GBB vs Heart River @ Mott/Regent @ 4:00 (makeup game)

Sunday, December 4

Open Swimming 1-3 Audult Water Aerobics 3:30 - 4:30

New England Public School

Monday, November 28th

• 2:35 p.m. dismissal for 7/8 BBB traveling to South Heart beginning at 4:00 p.m.
• Varsity BBB Practice begins.

Tuesday, November 29th

• 4:00 p.m. 7/8 GBB vs. Mott/Regent in our gym.
• 4:00 p.m. 7th BBB vs. Hettinger/Scranton in our gym.

Wednesday, November 30th

• No School – PD Day

Thursday, December 1st

• 7:00 am MathCounts in Mrs. Witte's room
• 2:20 p.m. dismissal for 7/8 GBB traveling to South Heart playing at 4:00 p.m.
• 4:00 p.m. leave time for A/B GBB traveling to Mott playing at 5:30 p.m.
• 4:00 p.m. 7/8 BBB vs. Bowman in our gym.

Friday, December 2nd

• 2:20 p.m. dismissal for 7/8 BBB traveling to Scranton for 4:00 p.m. game.
• 4:00 p.m. 7/8 GBB vs. Hettinger/Scranton in our gym.

Mott/Regent Public School

Monday, November 28

HS BBB 1st Day of Practice

Tuesday, November 29

K-6 Wildfire Day
K-6 Monthly Assembly, 2:50
JH GBB @ New England, 4:00
JH BBB @ Bowman County, 4:00
HS GBB vs New Salem/Almont @ Grant County, 5:30

Wednesday, November 30

7-12 Wildfire Day
7-12 Monthly Assembly, 2:00
Elementary Staff Meeting, 2:00

Thursday, December 1

7-12 Christmas Concert, 7:00 PM

Friday, December 2

JH GBB vs Richardton/Taylor @ Grant County, 4:00
HS GBB (AB) vs New England @ Mott, 5:30

“Idiom Words Of-
ten Spoken Over The
Thanksgiving Weekend”

By Don Taskila - ND.Featurewriter@gmail.com

for this phrase suggest it came about through the day-to-day talking discussions between ‘Early American Colonists and the already present Native Indians’ over wild turkeys that had been shot while preparing for a partnered dinner feast. Apparently, “Back In The Day”, people talked about a problem with the intent of finding a solution- rather than NOWADAYS- when tabling a problem (seemingly endlessly) is more the NORM.

“I’m Stuffed” ... means a person has eaten enough or too much, they’re full; and unable to eat any more yummy food: “No more for me Thanks - I’m Stuffed.” This expression was used as early as the year 1400. So- when you are resting (possibly dosing) after your second plate on Thanksgiving, just know that you are following a 622-year-old tradition!

“Eat Like A Bird” ... Hints that he or she eats very little- only small amounts of food, they are

etarian main dish—there is ‘No Official Rule’ so people can eat whatever they want. The meal is often served with many different side dishes that are called trimmings.

Use- or probably hear one or more of these expressions or Thanksgiving Idioms over this weekend:

“Talking Turkey” ... Historical accounts dating back to 1837



Idiom words are widely used sayings or expressions containing a figurative (imaginative) meaning that differs from the phrase’s literal (exact) meaning, in order to create a sense of illusion. The word “idiom” comes from the Greek word “idioma,” meaning peculiar phrasing, and links back in history 442 years ago to the 1580s.

As a WOULD-BE /desiring, intending, professing, or having the potential to be a Writer, I am interested in the history of words and expressions. Some words are pickled in the darker sides of history, however many are based on the expressions that have withstood the test of time as they were acquired from local cultures and customs of the world’s variety of languages. In this feature article, I am calling attention to a few Thanksgiving Idioms.

My shorter selection of Thanksgiving idiom expressions is related to an activity we often do on holidays: that being, “EATING”! Generally, turkey is the main dish served at Thanksgiving Time, along with some other delicious foods like sweet potatoes- mashed potatoes-gravy- stuffing, and of course pumpkin pie. Though some people prefer to have ham or a veg-



Area School Calendar
November 28th- December 3rd

Bowman County

28 7pm Bulldog Awards for Fall Sports	29 4pm JH BBB vs WR @ Home 4:30pm WR @ Harding Co.	30	1 4pm JH GBB @ Night Hawks 4pm JH BBB @ New England	2 2pm WR @ Velva 4:30pm GBB (A) @ Washburn	3 8am WR @ Velva 9am JH WR @ Rapid 10am JH & 7 th BBB vs HR @ Home 3:30pm GBB (A) @ Washburn
---	---	----	--	--	--

Scranton

28 BBB Practice Begins	29	30	1 4pm JH GBB vs Bowman Co. @ Hettinger	2 TBA WR @ Mandan 4pm JH GBB @ NE 4pm GBB (AB) @ Napoleon 4pm JH BBB vs NE @ Scranton	3 TBA WR @ Mandan 10am JH BBB @ Beach 4pm GBB (AB) @ Linton
---------------------------------	----	----	--	---	--

Harding County

28 5:30pm JH GBB vs Baker @ Home BBB Practice Begins	29 5:30pm JH GBB @ Dupree 5pm JH WR @ Home	30	1 6:30pm Ludlow Christmas Concert	2 9am WR @ Custer	3 TBA JH GBB @ Timber Lake 9am JH WR @ Rapid City
---	--	----	---	----------------------------	--

Baker, MT

28 5:30pm JH GBB @ Buffalo	29 4pm JH GBB vs Miles City @ Home TBA JH WR @ Home Picture Retakes	30	1 Junior Asvab Testing	2 3pm JH GBB vs Lemmon @ Home TBA WR @ Sidney	3 TBA WR @ Sidney TBA JH WR @ Colstrip SP/DR @ Shepherd
-------------------------------------	--	----	---------------------------------	--	---

very thin- they “Eat Like A Bird”. This comparison contains a ‘Fowl’ reference that birds don’t eat much because they actually do, relative to their given size.

“Gobble UP” ... Suggests eating a large amount of food very quickly. ‘Garbage Down’, or ‘Shovel In’ the great tasting food into one’s mouth. Perhaps these three phrases were born impolitely. Note: The ancient term “Gobble Up” started back in the 15th Century A.D.

“Eyes Bigger Than Your Stomach” ... Describes a person who has excitedly filled their Thanksgiving plate too full, perhaps too many times before checking the ‘FULL Gage Reading’ on their Stomach’s Dashboard, thus ending up unable to eat any more wonderful food before resting. This commonly used expression yet Today, comes from the 1500s also.

“Couch Potatoes” ... These are ‘Thanksgiving Overeaters’ who spend a lot of the Holiday Weekend sitting around and watching television sports, sitcom reruns, and their movies of choice. Mostly these people resemble my holiday self and look relaxed, seeking digestive comfort.

“Sweet Dreams” ... A phrase said kindly to someone who is chair or couch resting after Thanksgiving Dinner- before they dose off, wishing them a ‘GOOD Snooze’.

“Sweet Tooth” ... Someone who has a great craze ‘n’ desire to eat sugary delicious Thanks-

Superintendent Position

Bison School District No. 52-1
Bison, South Dakota
Start Date is July 1, 2023

To apply you must go to this website.

<https://www.dakotaedconsulting.org/cases-list/current-searches/>

11-26,12-3,10

giving desserts, and maybe a weakness for other sweets.

“(As) Easy As Pie” ... Last year, I “Stuffed My Face” during the holidays, and gained 10 pounds. Usually, I enjoy eating two pieces of Pumpkin Pie with ‘REAL Whipped Cream On Top’ shortly after Thanksgiving Dinner.

“Count Your Blessings” ... Make a ‘Special Effort’ to appreciate the good things in Life.

This ancient expression started with people attempting to count their “Blessings” in order to find 100 of them. Today, we choose to use ‘IT as a reminder to be ever so grateful for what we have. Remember also, those “Dear People” responsible for creating and serving ‘The 2022 Thanksgiving Dinner’.

.....Sincerely, “Happy Thanksgiving!”

BOWMAN
GLASS

• AUTO • HOME • COMMERCIAL • HOUSE WINDOWS
• GARAGE DOORS & DOOR OPENERS

Mike & Jodi Tivey

205 1st St. SE • Bowman, ND 58623

701-523-5647 • 800-869-8096

bowglass@gmail.com



To Everyone Making a Difference

Fox Hills
Fencing

• Farm & Commercial
Fencing
• Waterline Installation
• Erosion Control
• Trenching

701-260-0702

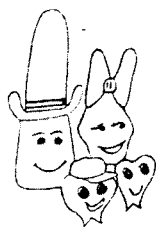
Bowman, ND

Elgin Community Clinic
603 East St. North, Elgin • 584-3338
8 a.m.-4:30 p.m. MT

Glen Ullin Family Medical Clinic
602 Ash Ave., Glen Ullin • 348-9175
8 a.m.-4:30 p.m. CT
Monday, Thursday, Friday
7 a.m.-7:30 p.m. CT Tuesday and Wednesday

Richardton Clinic
215 Third Ave. W., Richardton • 974-3372
Monday 8 a.m.- 5 p.m. MT
Tuesday, Thursday, Friday - 8 a.m.-4:30 p.m. MT
Wednesday 8 a.m.-6:30 p.m. MT

Walk-ins welcome
Emergency care 24/7
Jacobson Memorial Hospital Care Center, Elgin
584-2792
www.jacobsonhospital.org



Gregory J. Johnson
DDS, FAGD
Doctor of Integrative Medicine
Health Centered Dentistry
And Orthodontics
"Dedicated to excellence in dentistry"

1-701-974-2118
1-800-439-7439

200 3rd Ave West
Richardton, ND 58652

www.richardtontdental.com

tfm

Crane & Merriman, PC
ATTORNEYS AT LAW

DAVID M. CRANE
Licensed in ND & SD

PAT J. MERRIMAN
Licensed in ND, MO &
US Supreme Court

219 Brown Ave., Mott
(701) 824-2591

RECIPE OF THE DAY

BAKED KNOEPHLA

DOUGH:

1 egg
1/2 tsp salt
1/2 C. milk
1 1/4 C. flour (usually close to 2 C. flour for stiff dough)
3 to 4 pared, cubed potatoes
1 lb. bacon, cut up in small pieces
1/2 C. diced onion
1 pt whipping cream

Mix dough. Boil potatoes, cut dough into water. Fry onion and bacon. Drain. Drain knoeplia and potatoes. Mix everything together. Put in 9 X 13" pan. Pour cream over top and brown bread crumbs for top. Bake covered for 1/2 hour and uncovered 1/2 hour at 350°.

2022's my year to ...

SHOP LOCAL!!

GREFF ELECTRIC

The Power of Family

Adam Greff

Owner
Master Lic #3594

9175 65th St. SW
Mott, ND 58646

701-260-1403
greffelectric@gmail.com

Residential, Commercial, Farm/Ranch, Trenching, Locating,
Fault Locating



Reflections on the Words of Life

by Pastor Paul Ferrie, Grace
Reformed Church of the Lord
Jesus, New Leipzig

Last time we saw that God commanded the prophet Jonah to go to Nineveh, the capital of Assyria. This was the first direct commission to take the gospel to the nations, and Jonah wanted nothing to do with it. Why? Jonah shared the typical Jewish disdain for the Gentiles.

This scenario introduces us to one of the main purposes of the book of Jonah: to show us that God's grace was always meant to be extended to all the nations and not just to Israel. To see this, we can go back to God's promise to Abraham in Genesis 12:2-3: "I will make you a great nation; I will bless you and make your name great; and you shall be a blessing. I will bless those who bless you, and I will curse him who curses you; and in you all the families of the earth shall be blessed." This promise was repeated to Abraham's son Isaac in Genesis 26:4: "And I will make your descendants multiply as the stars of heaven; I will give to your descendants all these lands; and in your seed all the nations of the earth shall be blessed." God's intention from the beginning was to bring blessing to ALL the nations of the earth. And although the prophets sent to Israel faithfully foretold the fact that the gospel would go to the Gentiles (see Isaiah 11:10, for example), the Israelites had no interest in be-

ing the instrument of taking it to them. This explains Jonah's disobedience to the command from God in Jonah 1:2: "Arise, go to Nineveh, that great city, and cry out against it; for their wickedness has come up before Me."

God had decided that it was time to do something about Nineveh's wickedness. The obvious lesson for us here is that God is the God of ALL the people of the earth. The fact that He had been dealing almost exclusively with Israel did not mean that the other nations were not His. God the Father says to God the Son in Psalm 2:7-10: "I will declare the decree: The LORD has said to Me, 'You are My Son; today I have begotten You; ask of Me, and I will give You the nations for Your inheritance, and the ends of the earth for Your possession; You shall break them with a rod of iron; You shall dash them to pieces like a potter's vessel.' Now therefore, be wise, O kings; be instructed, you judges of the earth."

God brought the flood on the whole earth for its wickedness in Noah's day and later did not hesitate to wipe out Sodom and Gomorrah for their evil perversion. And in our day, I do not think it can be questioned that God is bringing His judgments on mankind. God has the right to judge and is righteous in all His judgments. One day this will be acknowledged by all, as we read in Revelation 15:3-4: "They sing the song of Moses, the servant of God, and the song of the Lamb, saying: 'Great and marvelous are Your works, Lord God Almighty! Just and true are Your ways, O King of the saints! Who shall not fear You, O Lord, and glorify Your name? For You alone are holy. For all nations shall come and worship before You, for Your judgments have been manifested.'"

Friends, God is holy and just, and He will bring judgment against all evil. But the good news is that He made a way for us to come out from under His wrath and into His love and blessing. He did this by sending His Son Jesus Christ to take the just punishment for the sins of all His people. Have you placed your trust in what Christ did to pay for your sin? That is the only way to avoid coming under God's just judgment for all eternity. Please be sure that you are relying on Christ's payment for sin alone to make you right with God. For those who have done so, an eternity of joy awaits.

Montana Fiberglass Stock Tanks

Many 10' x 2' Round Tanks
1190 gal. capacity on
hand.



Also insulated
Oblong energy free
fiberglass tanks
for winter use.



Tanks are available now
Call 701-597-3923

*No man's opinion is entirely worth-
less. Even a watch that won't run is
right twice a day.*

thrivent

A personalized financial strategy
based on your values.



Bryan Clendenen, FIC, CLTC®

Financial Associate
112 N Main St, Bowman, ND 58623
701-523-3953

Advice | Investments | Insurance | Banking | Generosity

27193 R7-21

Toll Free Reservations:
1-800-284-1855

Trapper's Inn
Box 398
Belfield, ND 58622
(701) 575-4261



**The Trapper's Kettle
Restaurant**
Belfield - 575-8585

**Prairie
Dental, Inc.**

Dr. Jennifer Sarsland
Dr. Kevin Mark

12 6th Ave SW
Bowman, ND 58623
701-523-3255

www.prairiedentalinc.com



**WORRY IS LIKE A
ROCKING CHAIR.**
IT GIVES YOU
SOMETHING TO DO,
BUT IT DOESN'T GET
YOU ANYWHERE.

Congratulations to our \$5 Winners

Gary Even, Keldron, SD - (Mott Winner)

Leona Kessel, Belfield, ND - (Bowman Winner)

Eyeglasses were on Page 13 - Olson Carpet & Furniture Store

(hours for calling)

Monday thru Wednesday (9:00 am - 4:00 pm)

Be sure to check the ads in this weeks

Eido Connect for the lost eye glasses - and win \$5.00

Call (701) 824-2605 - Mott or (701) 523-4577 - Bowman



FITTERER GAS & OIL, INC.
3845 HWY 21 EAST
FLASHER, ND 58535

LEE FITTERER, OWNER
PHONE: 701-597-3914
CELL PHONE: 701-220-9628
FAX: 701-597-3075

Bulk Gas & Fuel
Propane
Motor Oil

Home made PIZZA - Dine in or carry out!

ERICKSON HEATING AND AIR



Tyler Erickson, Owner/Operator
701-567-6694 - Hettinger, ND

"Where the customer comes first"

Residential • Commercial • Furnaces
Air Conditioners • Floor Heat
Contract Maintenance • Duct Work
Humidifiers/Dehumidifiers • Air Exchangers
Garage/Shop Heaters

tfm

Slope Hettinger
Soil Conservation District

Winter Ball

January 21, 2023

at the
**Enchanted Castle
Regent, ND**

5:30 social
6:00 dinner
7:00 entertainment
9:00 live auction & calcutta
10:30 Mendenhall Crossing Band

Dress Code: Semi Formal
Men - Nice Jeans, Collared Shirt,
Sports Jacket
Women - Black Tie/Cocktail Dress

Contact: Kristy Honeyman
701-824-3218

~ ADAMS COUNTY LAND AUCTION ~ **480 +/- ACRES - OWNER: BRIAN MCCOLLUM**

Monday, December 19, 2022 at 1:00 p.m. (MST)

Auction Location: Adams County Courthouse in Hettinger, ND

602 Adams Ave. in Hettinger, ND (First Floor)

For Questions & More Info about the Land call Brian McCollum at 701-260-9917



LAND TO BE OFFERED:

OWNER: Brian McCollum

Offering: Approx. 480 +/- Acres
All Acres Pasture Now,
182 Crop Based Acres

Directions & Location of Land to
be Offered:

From: Junction of Hwy 8 & Hwy 21 -
Go 19 Miles South to 8th Ave. NW, 2
Miles East & 1 Mile North -OR-

From: Junction of Hwy 8 & Hwy 12 -
Go 7 Miles North to 8th Ave NW, 2
Miles East & 1 Mile North.

PARCEL #1 (320 +/- Acres)

Legal Descriptions: (240 +/- Acres)
SE1/4; S1/2NE1/4 - Section: 33
Township: 131 Range: 94

(80 +/- Acres) SW1/4NE1/4; LOT 2 -
Section: 4 Township: 130 Range: 94

3000 Gallon Poly Storage Tank

**(2) 1000 Gallon Concrete Tanks for
Water**

2 Stock Dams

**260 Ft. Water Well (6 Gal./Minute),
Powered by Solar Panels**

170 Ft. Water Well, Solar Powered

**(4) 1000 Gallon Concrete Water
Tanks**

900 Gallon Fiberglass Tank

2021 Taxes (240 Acres): \$933.33

2021 Taxes (80 Acres): \$324.24

PARCEL #2

Legal Description: (160 +/- Acres)

NW 1/4 - Section: 34 Township: 131

Range: 94

1000 Gallon Concrete Water Tank

1000 Gallon Concrete Water Tank

500 Gallon Poly Water Tank

Powered by Solar Panels

(1) Stock Dam

2021 Taxes: \$384.14



Visit our Website at www.bigd-eauction.com for More Information, Auction Terms & Photos!

Big D&E ~ Ed Praus Auction | Dickinson, ND

Auctioneers: Eddie Praus - Lic. #27 - 701-225-6131

Delvin Praus - Lic. #667 - 701-290-5081 | Pat Praus Lic. #737 701-290-8619

Ed Praus Clerking Service - Lic. #27

WE NEED YOU!



The Christmas season is upon us
and we are searching for
individuals who would be willing
to make a monetary donation or
sponsor an Angel from our tree.

For Questions or to Sign up Call: Social
Service Office 824-3276 or
Commercial Bank of Mott
824-2593

Made with PosterMyWall.com

2022

Mott/Regent Angel Tree

Are you or someone you know having a tough time
this year and could use a little extra help providing
Christmas presents for loved ones?

Registration forms can be picked up in:

Regent at:
Regent Garage
Regent Co-Op
Dakota Western Bank

Mott at:
Oien Grocery
Commercial Bank of Mott
Social Service office

Return all completed forms to the
Social Service office in Mott

They can either
be dropped off at the office, in the
dropbox outside our office, or
mailed to:

**309 Millionaire Ave
Mott, ND 58646**

Contact Steph @ 701-824-3276 with any
questions or to sign up!

All information will remain confidential



Eido Connect

we're here to help you grow your business! **11,800 copies** only publication with **100% coverage!!!**

