

TRADEHIVE DAILY MARKET PACKET

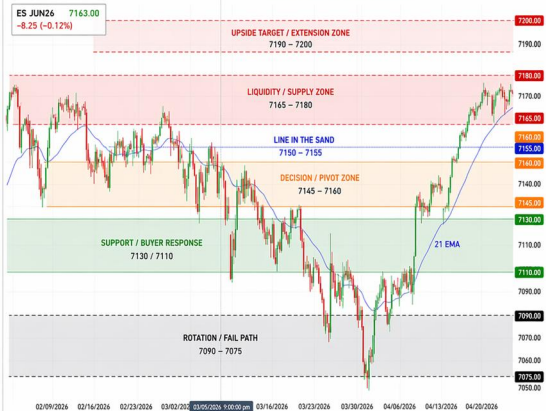
April 23, 2026 | ES Desk Map

ES JUN26 1H CHART

TRADEHIVE DESK MAP

APRIL 23, 2026

ES JUN26 7163.00
-8.25 (-0.12%)



7200.00
7190.00
7180.00
7165.00
7160.00
7155.00
7160.00
7145.00
7130.00
7110.00
7110.00
7090.00
7090.00
7070.00
7060.00
7075.00
7050.00

CURRENT CONTEXT

- Bullish structure intact
- Testing upper liquidity / highs
- Hold 7150-7155 to keep control
- Acceptance above 7165 needed
- Failure here = rotation risk

BULL SCENARIO

Hold 7150-7155
Accept above 7165-7180
→ Squeeze higher
Targets: 7190+ / 7200

BEAR SCENARIO

Reject 7165-7180
Lose 7145
→ Move to 7130
→ Lose 7110
→ Rotate to 7090 / 7075

KEY LEVELS

7165-7180 Resistance
7145-7160 Pivot
7130 / 7110 Support
7090-7075 Rotation

MARKET STRUCTURE

- Higher highs intact
- Late-stage expansion
- Compressing near highs
- Decision zone

DEALER VIEW

- Positive gamma
- Weakness likely bought
- Acceptance still needed
- 7100-7055 support shelf

INVALIDATION LEVEL

7145.00
(Lose below = shift bias lower)

CONFIRMATION LEVEL

7150.00
(Acceptance above = strength)

REMINDER

Trade confirmation, not assumption.
Respect the zones.
Let the market tell you.



TRADE HIVE
Plan. Execute. Dominate.

KEY LEVELS

7165-7180 Resistance
7145-7160 Pivot
7130 / 7110 Support
7090-7075 Rotation

EXECUTION REMINDER

Fade the edges
Wait for failure
Do not chase liquidity

NOTES

