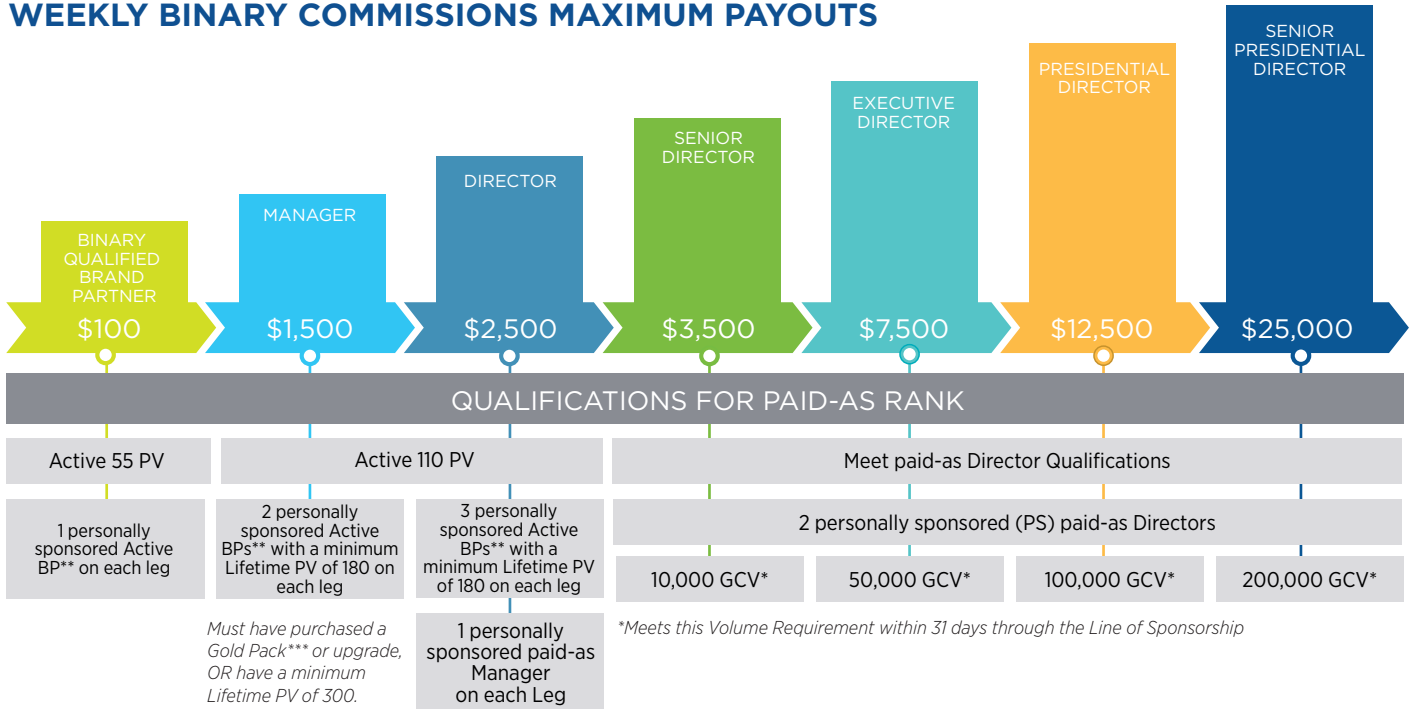


COMPENSATION PLAN ENHANCEMENTS

As LifeWave continues to explode across the globe, we search for new and innovative ways to maximize your opportunity and strengthen your financial possibilities. With weekly maximum payouts by paid-as rank and fair baseline qualifications for matching bonuses, you are in the driver's seat when it comes to your earning potential!

WEEKLY BINARY COMMISSIONS MAXIMUM PAYOUTS



Volume Maturity Rule & Cyclable Volume Rule: Excess cyclable volume from both power & profit legs is consumed each week based on maximum payout thresholds at a 2:1 ratio for paid-as Managers and above. Paid-as Managers will be excluded from the volume cyclable volume rule for the first 52 weeks from enrollment date. Volume in both power and profit legs are consumed once it matures to over 52 weeks old.

A Brand Partner must be "binary qualified" to earn any Binary Commissions. To be binary qualified, a Brand Partner must meet the active and structural requirements of A Binary Qualified Brand Partner and have at least 660 BV on the power (strong) leg and 330 BV on the profit (weak) leg.

UNLIMITED MATCHING BONUSES

As a paid-as Manager or above you can qualify to earn a 20-25% match of the Weekly Binary Commissions of your personally sponsored (PS) Brand Partner(s) when you meet the below qualifications. There are no maximum payouts on Matching Bonus.

LEVELS	PERCENTAGE MATCH	QUALIFICATIONS
1st	25%	Active 110 PV Paid-as Manager or Above
2nd	20%	Active 110 PV Paid-as Manager or Above Minimum 6 cycles in paid commissions weekly
3rd	20%	Active 110 PV 3 personally sponsored Active BPs** with a minimum Lifetime PV of 180 on each leg Minimum 10 cycles in paid commissions weekly



Here are a few terms that are helpful when learning about Weekly Maximum Payouts on Binary Commissions & Matching Bonuses:

- 1. Paid-as Rank:** The weekly status a Brand Partner earns based on structure, volume and active status of a member's team. This weekly status determines the maximum commissions paid for the week.
- 2. Lifetime Rank:** The highest rank a Brand Partner has earned (paid-as at least one week) in their career with LifeWave.

**A Brand Partner with a minimum 55 PV in a rolling 31 day period.

***Gold pack is a historic enrollment pack option previously offered that has been discontinued.

FAQs

Q: Am I eligible to earn binary commissions?

A. You are eligible to earn binary commissions if you are binary qualified. This means being an active Brand Partner with 55 PV in a rolling 31 day period with 1 personally sponsored active BP on each leg, as well as having at least 660 BV on your power (strong) leg and 330 BV on your profit (weak) leg.

Q: The highest rank I have earned is Director; however, I typically qualify as a Manager each week. Is my weekly binary commissions check based on the highest rank I have earned or what I qualify at each week?

A. Your weekly binary maximum payout is based on the rank you qualify as or your “paid-as” rank each week.

Q: With matching bonuses, is the only requirement to earn level 1, 2 and 3 now that I am a Manager or above?

A. No, while we are adding the requirement of Manager or above as a qualification for earning matching bonuses, all other established qualifications for each level of matching bonus are still in place.

Q: What happens to BV that isn't cycled because of the paid-as rank cap?

A. Any cyclable BV that exceeds the weekly payout limit based on your paid-as rank will be consumed at a 2:1 ratio each week for all paid-as Managers and above.

Q: How do I know what my paid-as rank is each week and if I have any cyclable volume that could be removed?

A. There are multiple tools in the back office that can be used to help a Brand Partner understand their paid-as rank and bonus eligibility. Be sure to check out the rank advancement report, matching bonus report as well as the volume maturity and carryover volume calendar reports for details.