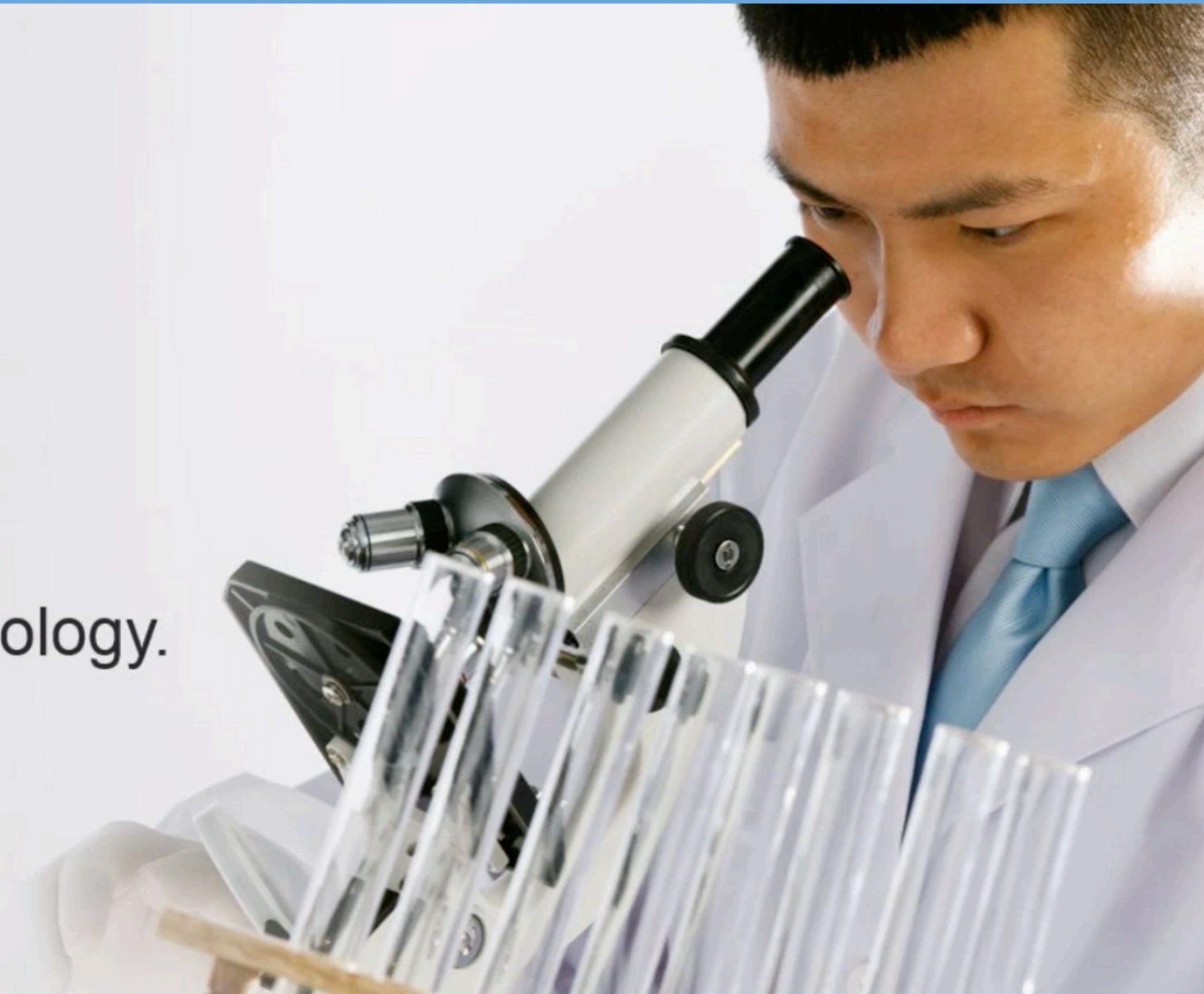
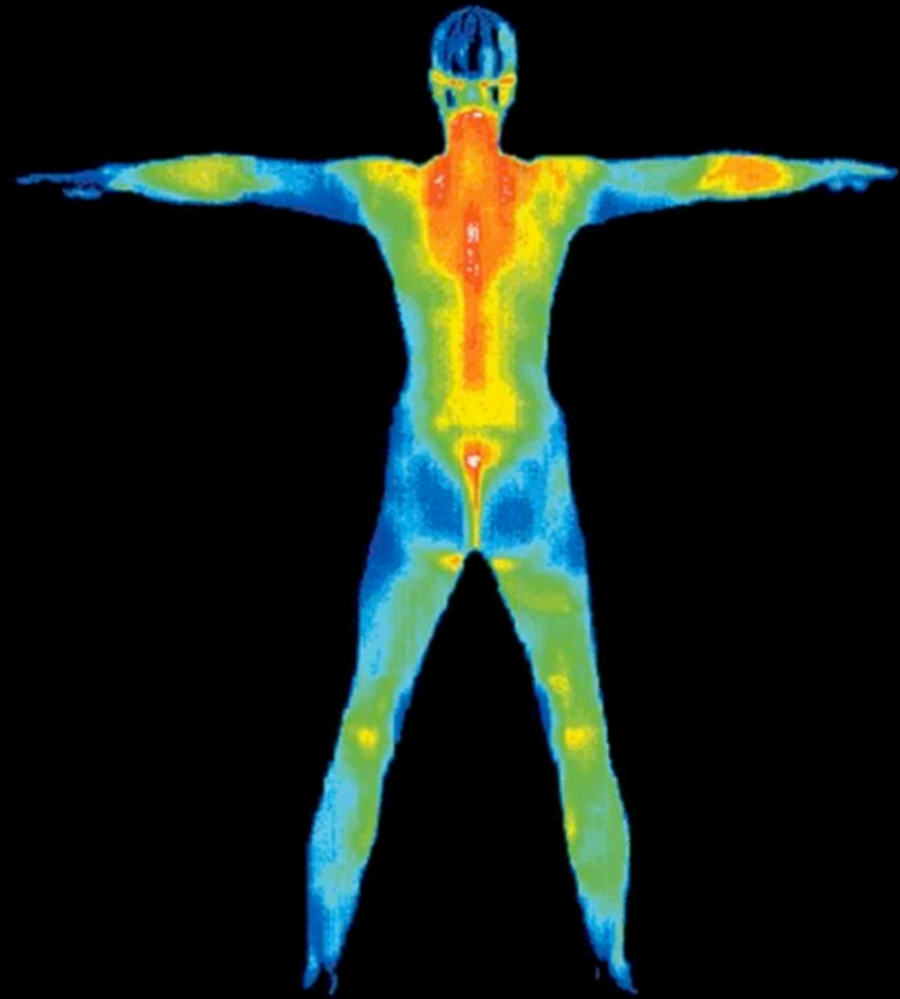


Let's take a look at



Phototherapy Technology.



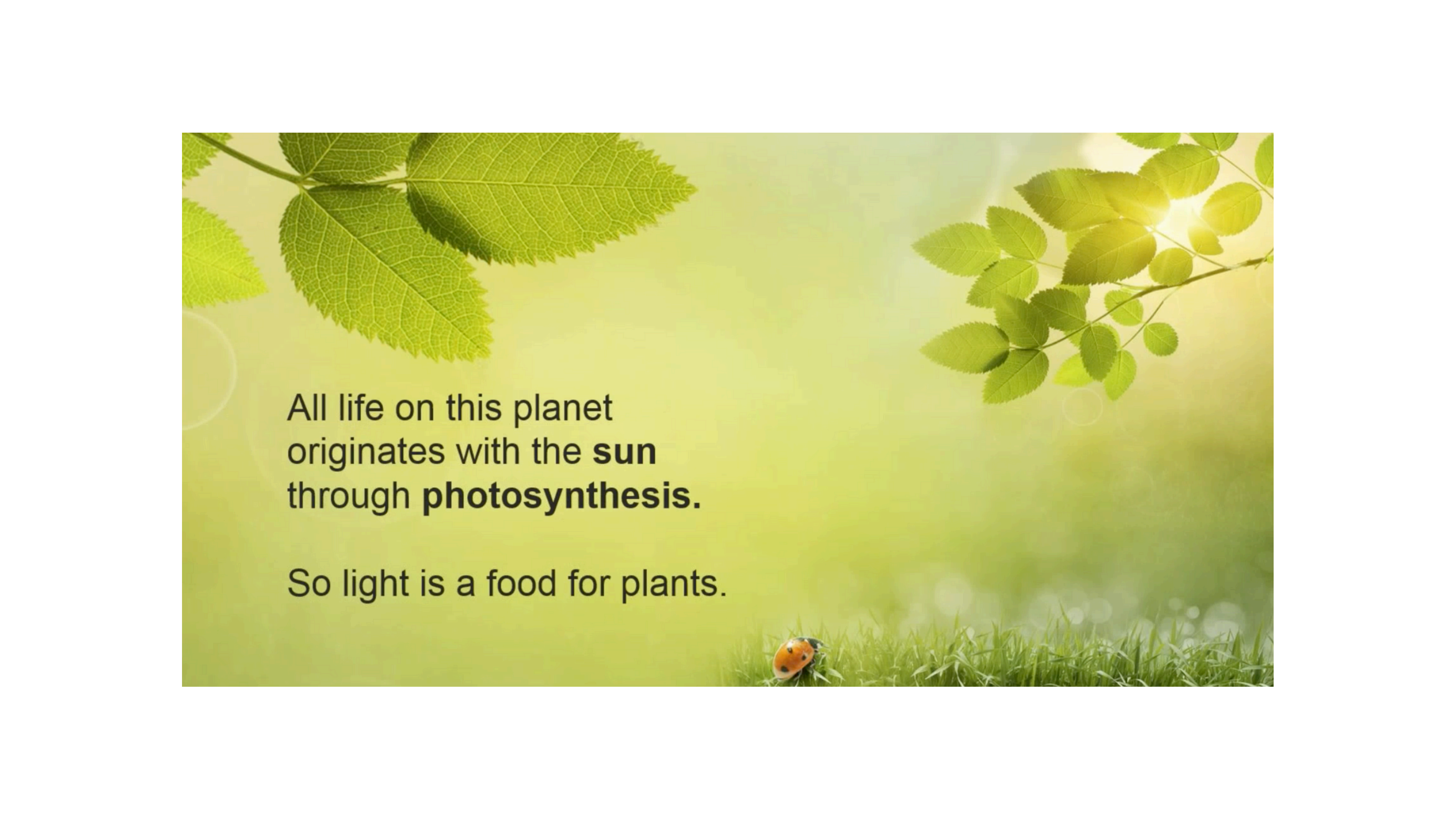


All living creatures emit light; humans **emit infrared light.**

We can see this with **“night vision.”**

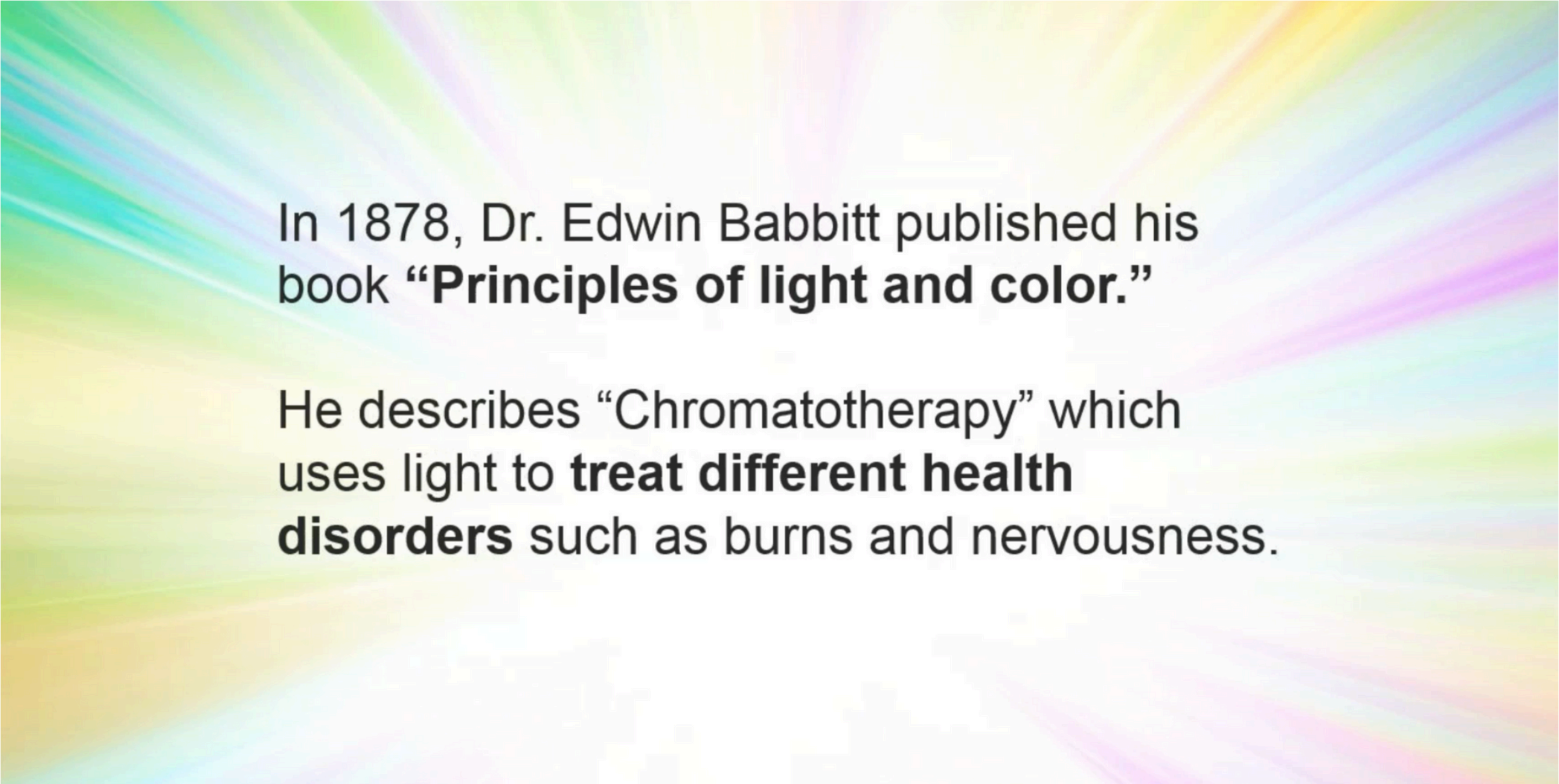
Sunlight has many effects on our body, including the ability to produce **melanin**, or a suntan.



The background is a soft, green-toned image. In the upper left, there are several large, detailed green leaves with serrated edges. In the upper right, a branch with smaller green leaves is visible, with a bright light source (the sun) shining through them, creating a lens flare effect. At the bottom center, a small ladybug with orange and black spots is resting on a patch of green grass.

All life on this planet
originates with the **sun**
through **photosynthesis**.

So light is a food for plants.

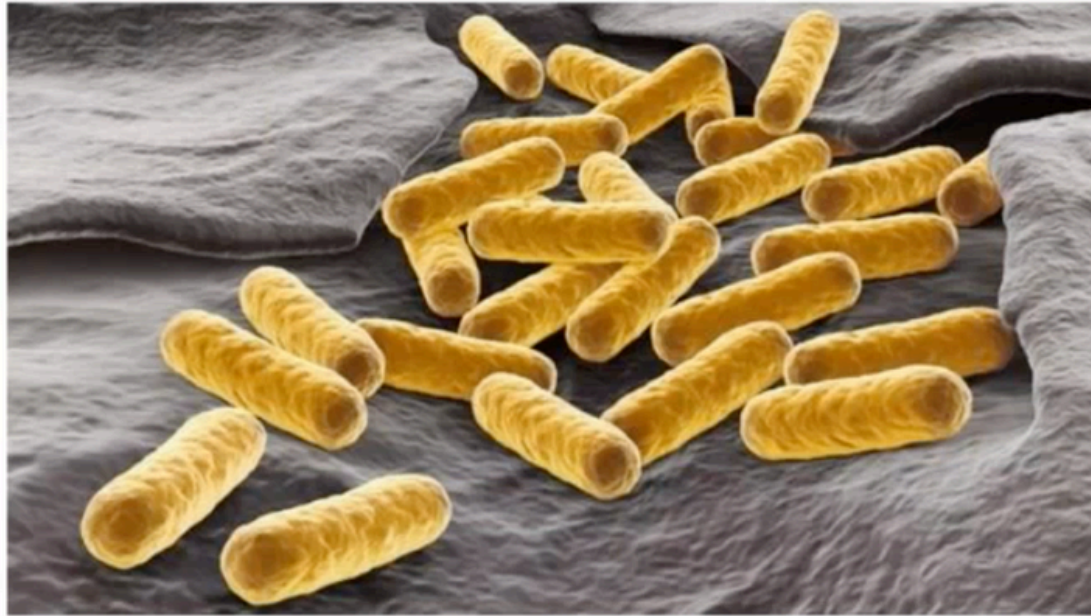


In 1878, Dr. Edwin Babbitt published his book “**Principles of light and color.**”

He describes “Chromatotherapy” which uses light to **treat different health disorders** such as burns and nervousness.



By the end of the 1970's, Peter Mandel from Germany found that by shining different colored lights on **acupuncture points**, pain could be diminished within minutes.

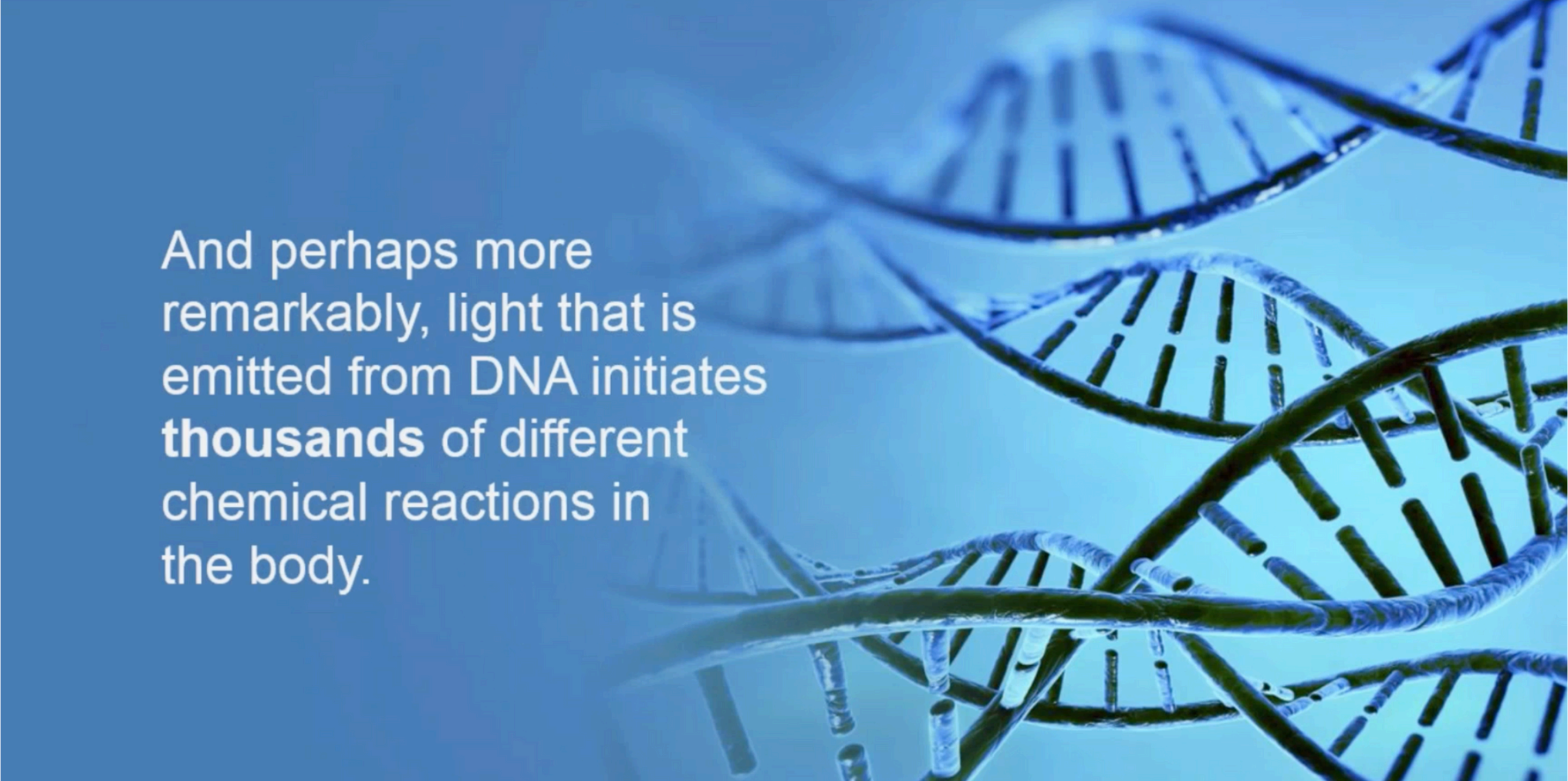


[Quantum dots](#) resemble the semiconductors found in consumer electronics, but on a nanoscale, measuring some 20,000 times smaller than a human hair. By working on such a tiny scale, the researchers are able to prompt specific interactions on a cellular level that only target the dangerous bacteria.

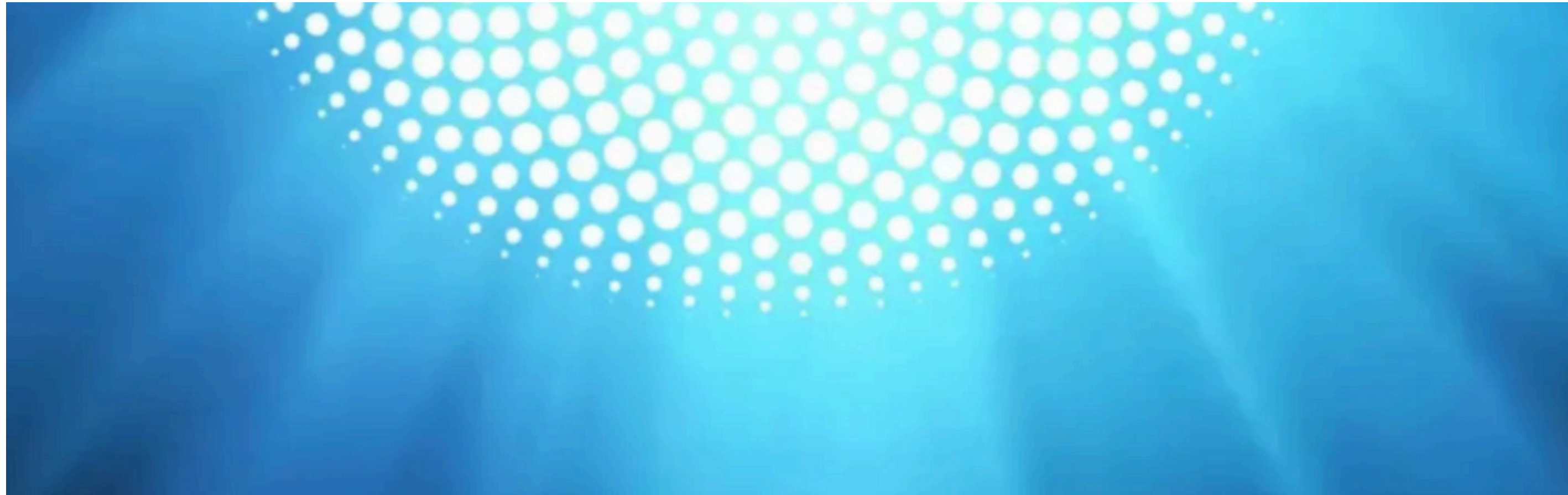
Just announced this month!

Research at the University of Colorado found that tiny light-activated particles could be used to kill bacteria with ***specific wavelengths of light.***

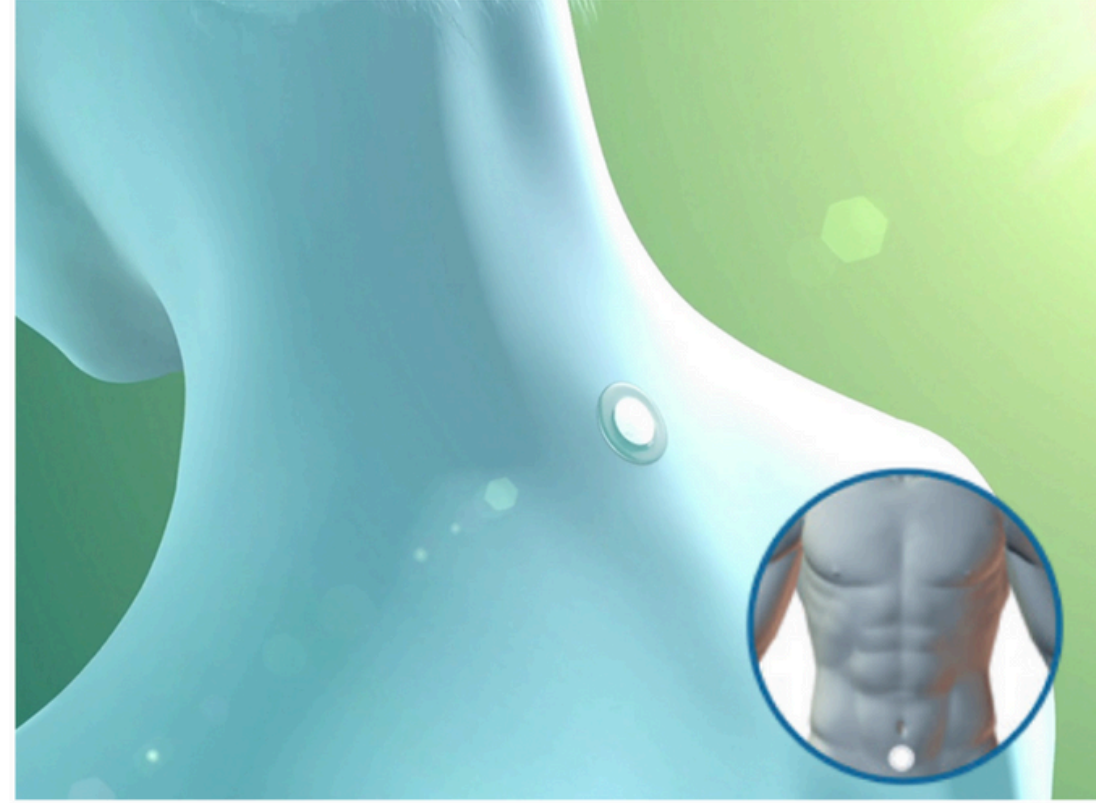
This approach may some day replace antibiotics

The background of the slide is a blue-tinted image of a DNA double helix. The structure is shown in a perspective view, with the two strands spiraling around each other. The rungs of the helix are represented by short, dark vertical bars connecting the two strands. The overall color scheme is a gradient of light to dark blue.

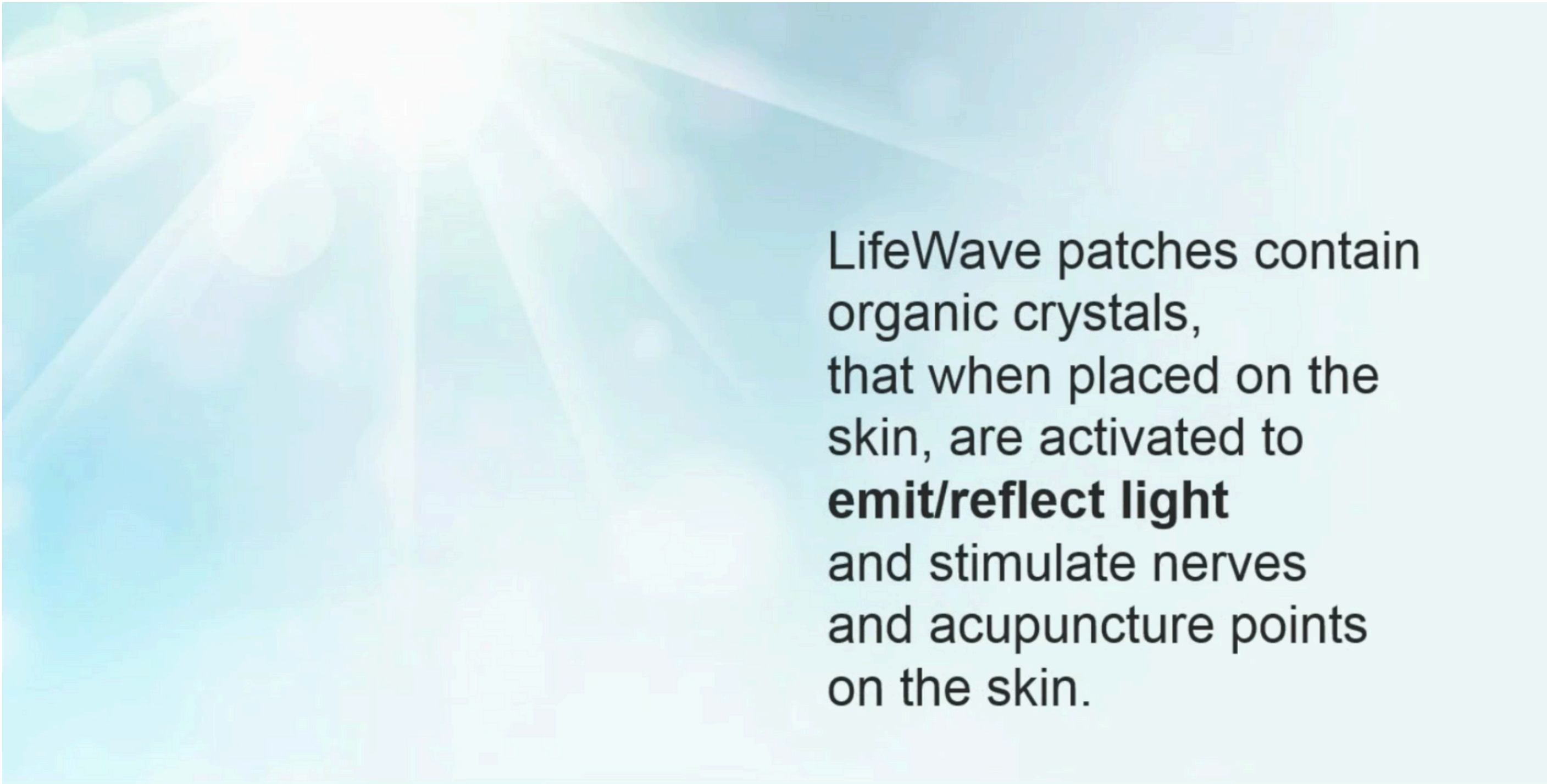
And perhaps more remarkably, light that is emitted from DNA initiates **thousands** of different chemical reactions in the body.



Unlike most phototherapy products, LifeWave patches are powered by your body heat (invisible light rays), so there is no need for batteries or cumbersome and expensive electronics.



- ✓ Apply to clean, dry skin.
- ✓ Wear for up to 12 hours on, then 12 hours off to repair and rejuvenate.
- ✓ Throw the patch away or place on your pet.
- ✓ Put on a new patch and repeat.



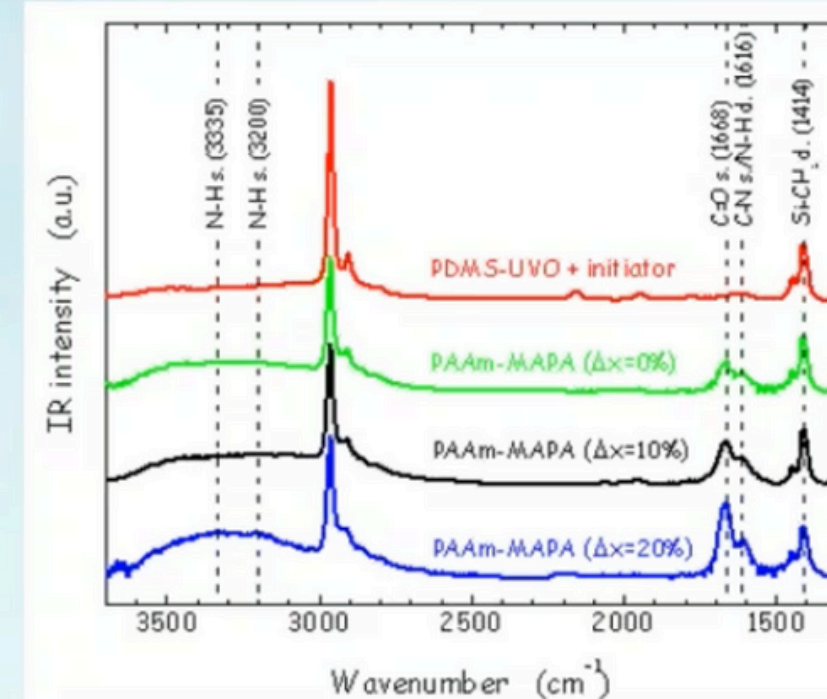
LifeWave patches contain organic crystals, that when placed on the skin, are activated to **emit/reflect light** and stimulate nerves and acupuncture points on the skin.

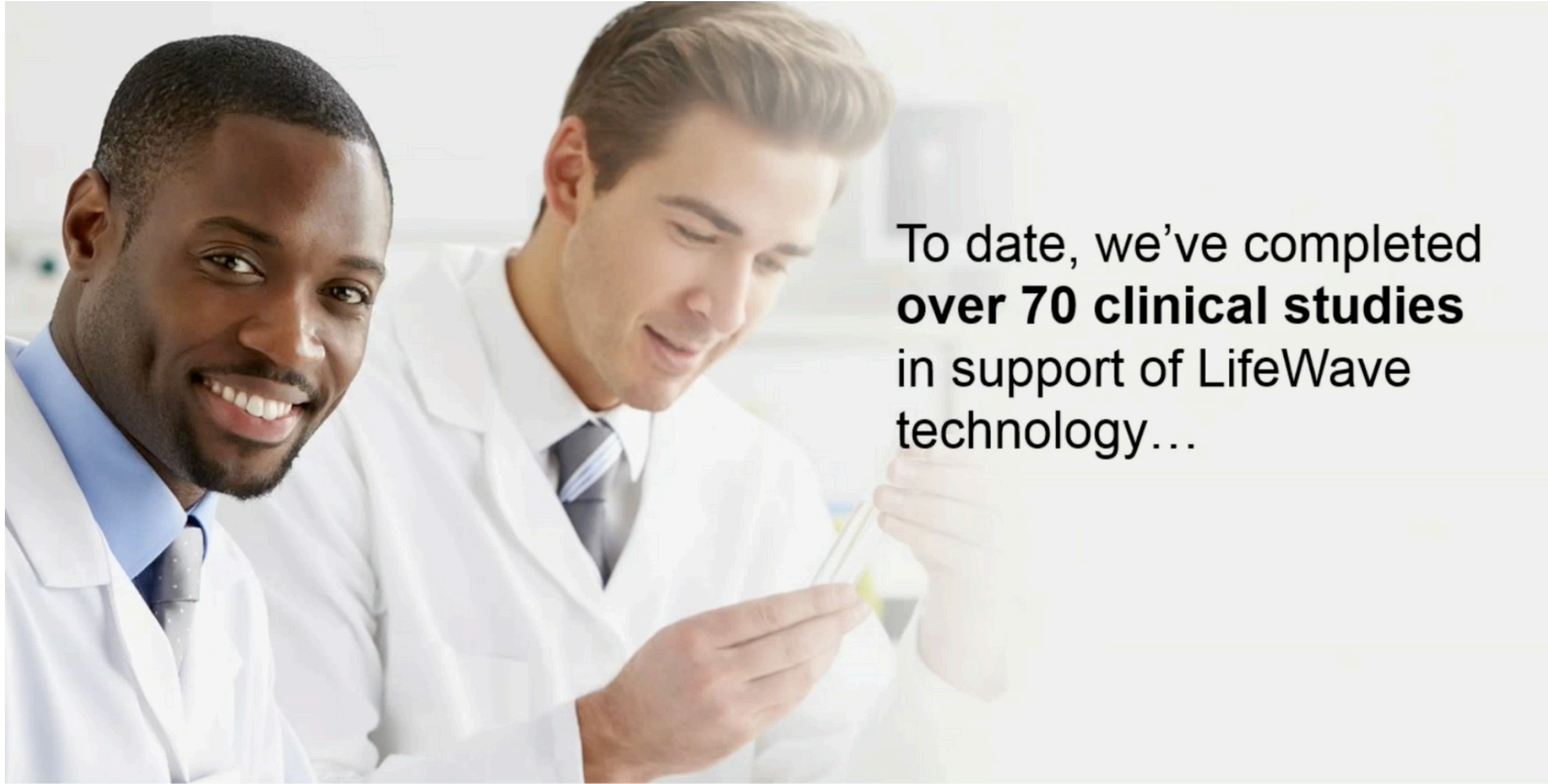
How do we know the patches emit/reflect light?

In our laboratories we use a piece of equipment called an **FTIR**.



When placing the patches into this equipment, we can record the **EXACT** wavelengths (or frequencies) of light that a patch emits/reflects.





To date, we've completed **over 70 clinical studies** in support of LifeWave technology...



LIFEWAVE LIVE! COPENHAGEN 2018

LIFEWAVE



'I see life in two parts now...
BeforeX39 and AfterX39... WOW!!

**CAN'T WAIT TO SEE WHAT THE
NEXT WEEK BRINGS :)'**

- Nikki Jumper

X39