



TOILET

**BLACK**  

---

**WALLS**

# MODULAR PRECAST RESTROOM BUILDING

**DURABLE • ACCESSIBLE • READY FOR YEAR-ROUND USE**

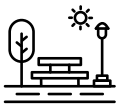
Insulated Concrete Panel Construction

PRESENTED BY  
**Black Walls Inc.**

Introducing our Precast Insulated Toilet Building System — a fully engineered, prefabricated restroom building designed for parks, recreation areas, trailheads, industrial sites, municipal infrastructure, and public facilities.

Manufactured in Canada using insulated precast concrete wall panels, this building offers unmatched durability, vandal resistance, and all-season performance while meeting British Columbia Building Code and accessibility requirements.

## Ideal Applications



### Municipal Parks

Year-round public restroom facilities



### Trailheads

Remote locations with minimal maintenance



### Campgrounds

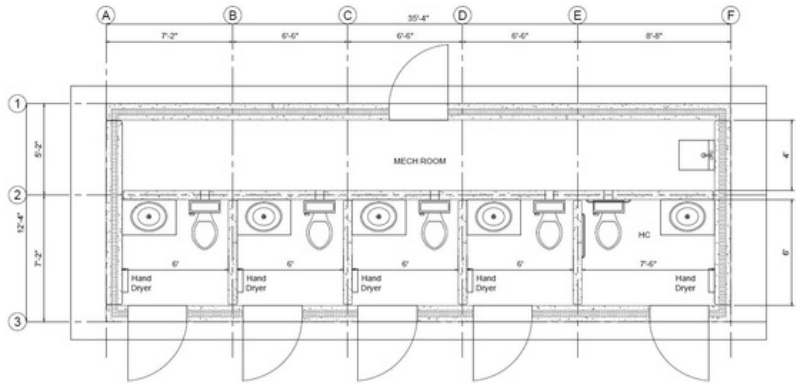
Durable for high-traffic seasonal use



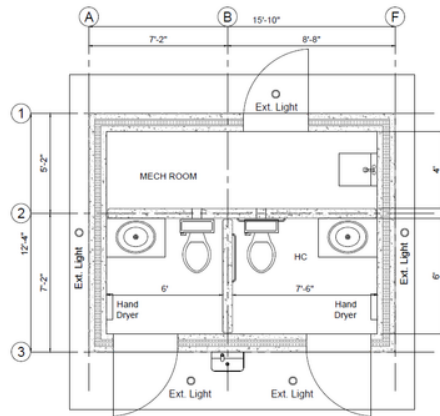
### Industrial Sites

Robust construction for demanding environments

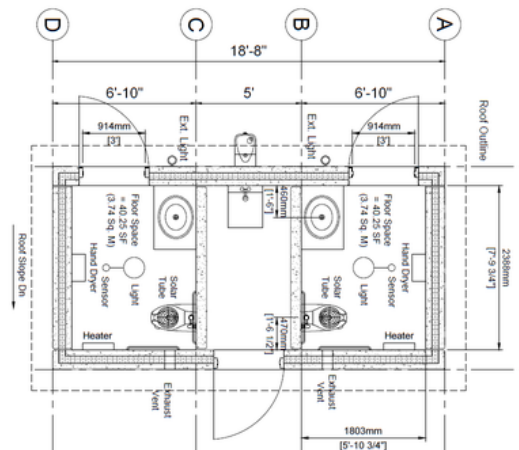
## 5 STALL ACCESSIBLE RESTROOM + MECHANICAL ROOM



## 2 STALL ACCESSIBLE RESTROOM + REAR MECHANICAL ROOM



## 2 STALL ACCESSIBLE RESTROOM + CENTRAL MECHANICAL ROOM



## A COMPLETE, CODE - COMPLIANT RESTROOM BUILDING - DELIVERED AND INSTALLED

---

<p><b>Built for Canada</b></p> <p>Engineered for Canadian climates and all-season performance</p>	<p><b>Barrier Free</b></p> <p>Fully accessibility compliant to BC Building Code</p>
<p><b>Rapid Install</b></p> <p>Crane-set modular panels with minimal site disruption</p>	<p><b>Low Maintenance</b></p> <p>Long-life concrete structure with low maintenance</p>

## Installation Requirements

---

- A flat, level staging area is required to place panels prior to installation
- Crane quote assumes full access to building perimeter
- Traffic control (if required) provided by GC
- Pricing based on non-winter installation conditions
- Winter installation may require additional costs

## Standard Package Includes

- ▶ Shop Drawings & Structural Engineering
- ▶ Insulated 4" R-21 GPS Wall Panels
- ▶ Precast Concrete Roof, Floor, and Footing
- ▶ Crane (Mobilization, Hoisting, Demobilization)
- ▶ Panel Welding
- ▶ Non-Shrink Grout under Walls
- ▶ Caulking and Backer Rod
- ▶ Exterior and Interior Wall Painting
- ▶ Door Frames & Insulated Steel Doors
- ▶ Electric Heat
- ▶ Interior/Exterior Lighting
- ▶ Exhaust Fan
- ▶ Interior Plumbing & Electrical
- ▶ Toilet Building Hardware — Barrier-Free Included

# Hardware for Toilet Building

---

## INCLUDED

## OPTIONAL UPGRADES

---

All hardware below supplied as part of the standard building package.

Enhance comfort, durability, or functionality with these upgrades.

---

Door Closer

In-Floor Heating

---

Coat Hook

Stainless Steel Wall-Hung Toilets

---

Passage Lever

Outdoor Water Fountain

---

30" Grab Bar

Water Bottle Filling Station

---

30" x 30" 90° Grab Bar

Mop Sink in the Mechanical Room

---

Stainless Steel Mirror – 22" x 30"

Automatic Hand Dryer

---

Toilet Paper Dispenser

Sharps Container

---

Paper Towel Dispenser

Floor Drains

---

Stainless Steel Sink

Custom exterior finishes and patterns

---

Barrier Free Porcelain Wall-hung with Flush valve

Garbage can

---

## Items Not Included (Owner/GC Responsibility)

---

- Footings layout location
- Electrical service connection
- Excavation and imported materials
- Permit fees
- Geotechnical engineering
- Anti-graffiti treatment
- Mechanical key or electronic card lock systems
- Sewer connection




# BLACK WALLS INC

For project inquiries,  
pricing, or quote details:

**Ready to Build?  
Contact us.**

9538 Hwy 97, Unit 1 Vernon BC V1H 1T5



 (250) 549-3010

 colinblack@telus.net

 blackwallsinc.com

**BLACK**  
WALLS