

PO BOX 674 105 E COLUMBIA  
FARMINGTON, MISSOURI 63640  
O 573.756.9226  
F 573.756.7310  
www.taylorengineeringllc.com



**P1**  
RELIMINARY

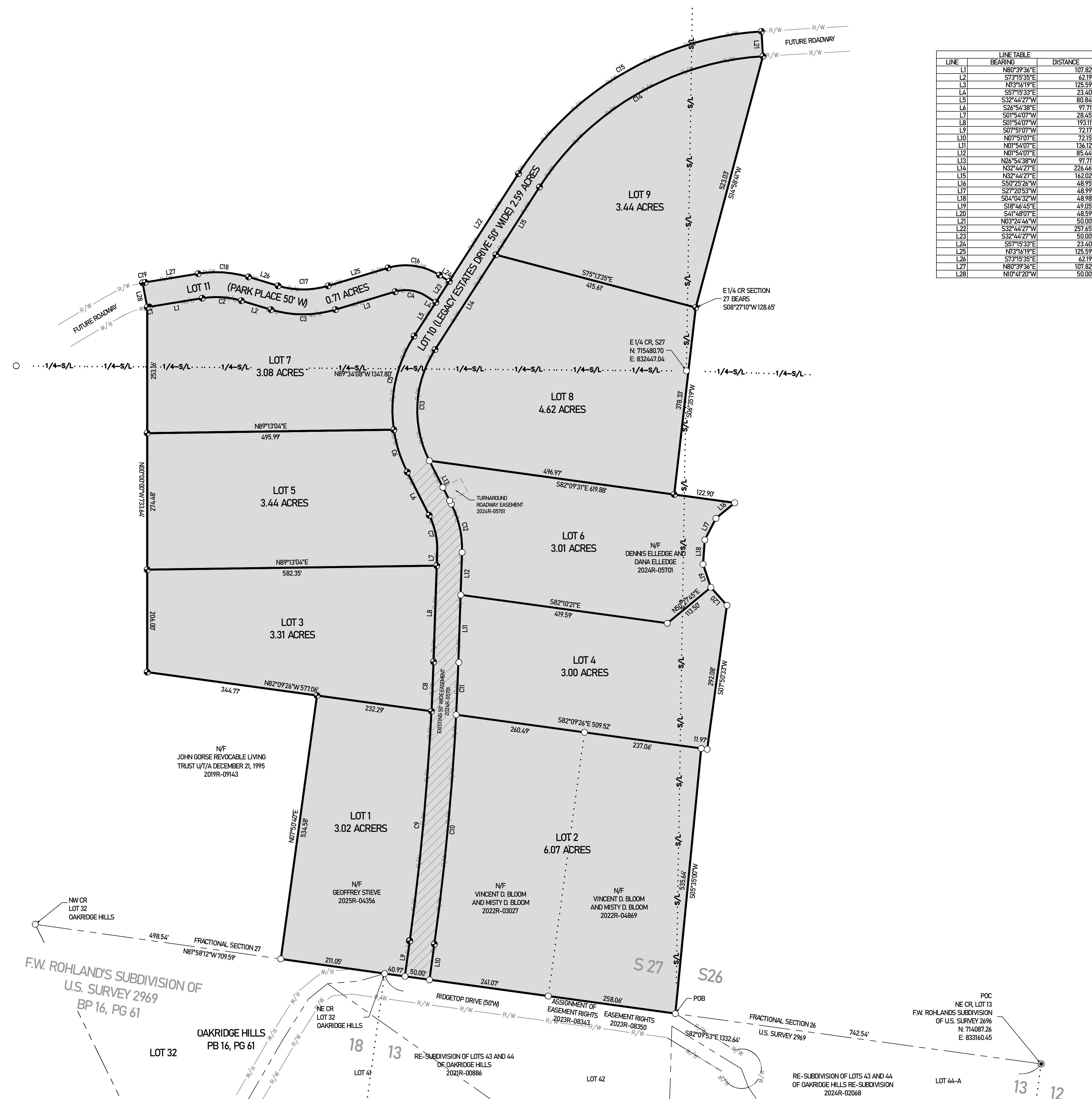
05/18/2026

CHAD P. CARRON  
PROFESSIONAL  
LAND SURVEYOR  
PLS-2024005134

**LEGACY ESTATES PHASE 1**

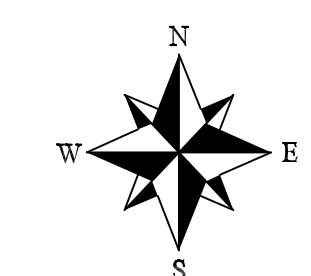
A SUBDIVISION LYING IN  
PART OF THE W 1/2, SW FRACTIONAL 1/4, & PART OF THE SW 1/4, NW 1/4, SECTION 26  
AND PART OF NE FRACTIONAL 1/4, SE FRACTIONAL 1/4, & PART SE 1/4, NE 1/4, SECTION 27  
ALL IN T36N-R5E-FIFTH PRINCIPAL MERIDIAN  
ST. FRANCIS COUNTY, MISSOURI

FIELD CREW:	ZLS/SCM	PLOT SCALE:	1" = 100'
CALCULATED BY:	CPC	TE PROJ NO.:	25027
DRAWN BY:	CPC	ISSUE DATE:	05/18/2026
JUSTIN GORSE AND CLAYTON DR. ST. LOUIS, MO 63127			



LINE	BEARING	DISTANCE
L1	N80°39'36"E	107.82
L2	S73°15'35"E	62.19
L3	N73°16'19"E	125.59
L4	S57°15'33"E	23.40
L5	S32°44'27"W	80.84
L6	S26°54'38"E	97.71
L7	S01°54'07"W	28.45
L8	S01°54'07"W	193.11
L9	S07°51'07"W	72.17
L10	N07°51'07"E	72.15
L11	N01°54'07"E	136.12
L12	N01°54'07"E	85.44
L13	N26°54'38"W	97.71
L14	N32°44'27"E	226.46
L15	N32°44'27"E	162.02
L16	S50°25'36"W	48.95
L17	S27°20'53"W	48.99
L18	S04°04'32"W	48.98
L19	S18°46'45"E	49.05
L20	S41°48'07"E	48.59
L21	N03°24'44"W	50.00
L22	S32°44'27"W	257.65
L23	S32°44'27"W	50.00
L24	S57°15'33"E	23.40
L25	N73°16'19"E	125.59
L26	S73°15'33"E	62.19
L27	N80°39'36"E	107.82
L28	N10°41'20"W	50.00

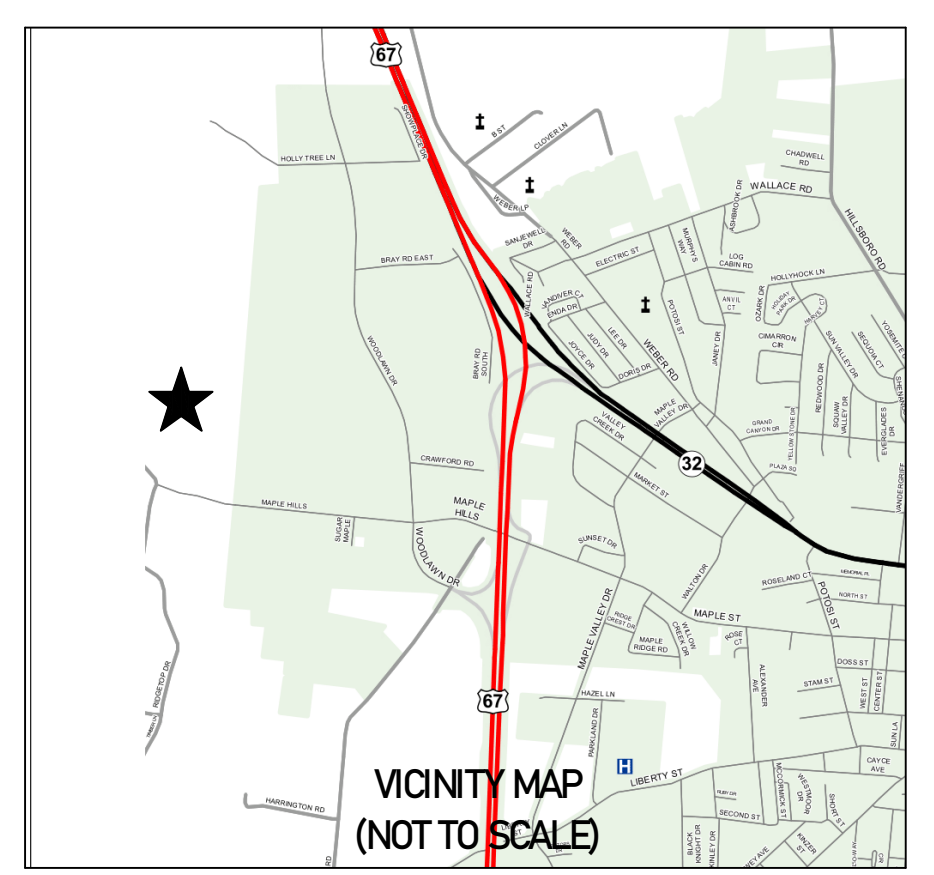
CURVE	RADIUS	ARC LENGTH	CHORD LENGTH	CHORD BEARING
C1	175.00	4.12	4.12	N79°59'08"E
C2	175.00	79.66	78.97	S86°18'00"E
C3	225.00	131.43	129.57	S89°59'38"E
C4	75.00	64.75	62.76	S81°59'37"E
C5	275.00	196.88	192.70	S12°13'52"W
C6	275.00	89.43	89.03	S17°35'40"E
C7	150.00	75.43	74.64	S12°30'16"E
C8	5425.83	99.79	99.79	S02°25'43"W
C9	5425.83	463.69	463.55	S05°24'14"W
C10	5475.83	463.69	463.55	N05°25'34"E
C11	5475.83	104.98	104.98	N02°27'04"E
C12	200.00	100.57	99.52	N12°30'16"W
C13	225.00	234.25	223.81	N02°54'55"E
C14	575.00	540.38	520.71	N59°39'51"E
C15	625.00	587.37	565.99	N59°39'51"E
C16	125.00	107.92	104.60	S81°59'37"E
C17	175.00	102.22	100.78	S89°59'38"E
C18	225.00	102.42	101.54	S86°18'00"E
C19	225.00	5.30	5.30	N79°59'08"E



-BASIS OF BEARINGS-  
GRID NORTH, MO EAST ZONE 2401  
GNSS OBSERVATION 04/02/2026  
COMBINED SCALE FACTOR: 1.00011568606601  
(GRID TO GROUND)

SCALE  
1 INCH = 100 FT

- SURVEY SYMBOLS:**
- - SET IRON ROD
  - - FOUND IRON ROD
  - ◇ - CALCULATED POINT
  - M - MEASURED
  - R - RECORD
  - N/F - NOW OR FORMERLY
  - POB - POINT OF BEGINNING
  - POC - POINT OF COMMENCING
- SURVEY LEGEND:**
- BOUNDARY LINE
  - - - - PROPERTY LINE
  - ..... RECORD PLAT LINE
  - R/W — RIGHT-OF-WAY LINE
  - ..... S/L ..... SECTION LINE
  - ..... 1/4-S/L ..... QUARTER SECTION LINE
  - X — FENCE



VICINITY MAP (NOT TO SCALE)