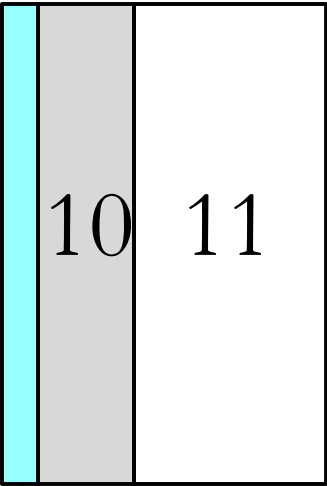
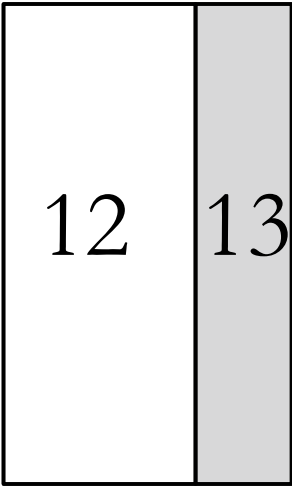


YOU SHOULD HAVE A 1/4" GAP FOR  
HARDWARE AND SUCH. IF NEEDS  
TO BE BUILD WITH MORE OF A  
GAP, ADJUST ACCORDINGLY.



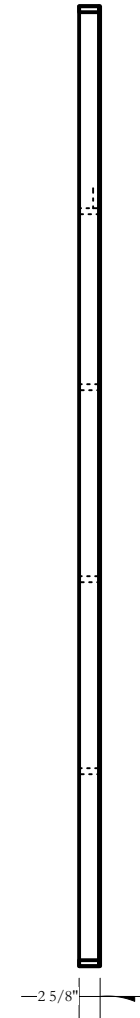
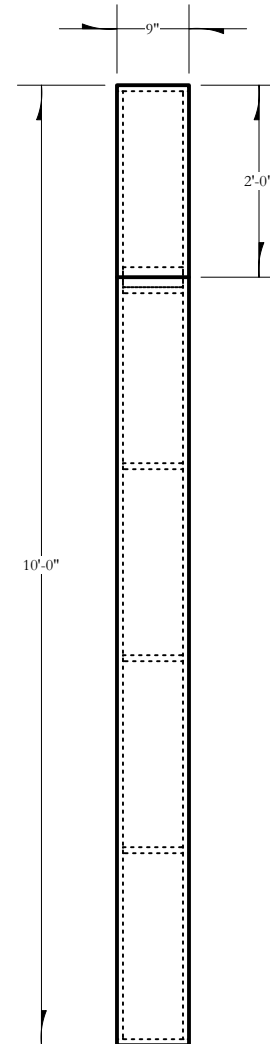
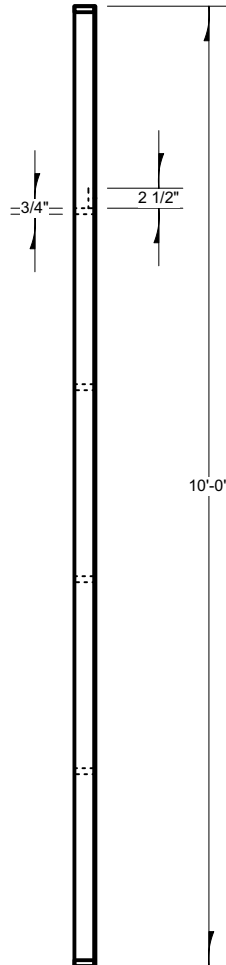
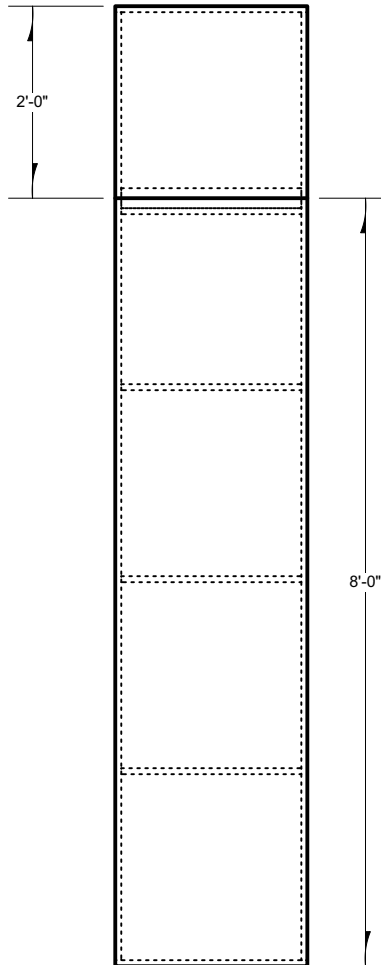
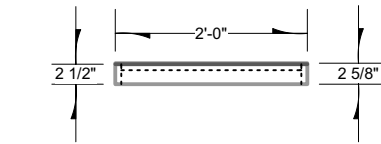
10.5



|   |
|---|
| <b>EVERYBODY</b><br>BY BRANDEN<br>JACOB-JENKINS<br>UNIVERSITY OF<br>GEORGIA<br><b>CELLAR<br/>THEATRE</b><br>FINE ARTS BUILDING<br>255 BALDWIN ST, ATHENS, GA 30605                |
| YOU WILL NEED 8<br>STOCK 4X10 (WHITE)<br>AND 2 2X10(GREY) FLATS.<br>BUILD WITH 1X3 (1X6<br>RIPPED TO 2 1/2") AND<br>FACE WITH SCRAP LUAN.<br>CONNECT 10 & 10.5<br>BEFORE SKINNING |
| SCENIC DESIGNER<br><b>LINDSEY<br/>TAYLOR</b>  |
| TECHNICAL DIRECTOR<br><b>N. TOMLIN</b>  |
| SCALE:<br>1/2" = 1' - 00"   |
| FLAT ASSEMBLY<br>LAYOUT   |
| REVISION DATE<br><b>08/28/2024</b>  |
| PAGE<br><b>1 OF 4</b>   |

10

10.5



# EVERYBODY

BY BRANDEN  
JACOB-JENKINS

UNIVERSITY OF

GEORGIA

CELLAR

THEATRE

FINE ARTS BUILDING  
255 BALDWIN ST, ATHENS, GA 30605

BUILD WITH 1X3 (1X6  
RIPPED TO 2 1/2") AND  
FACE WITH SCRAP  
LUAN.

CONNECT 10 & 10.5  
BEFORE SKINNING

SCENIC DESIGNER

LINDSEY

TAYLOR

TECHNICAL DIRECTOR

N. TOMLIN

SCALE:

1/2" = 1' - 00"

DSR FLATS

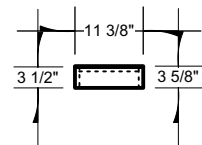
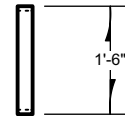
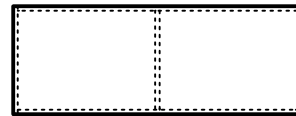
REVISION DATE

08/28/2024

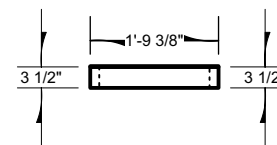
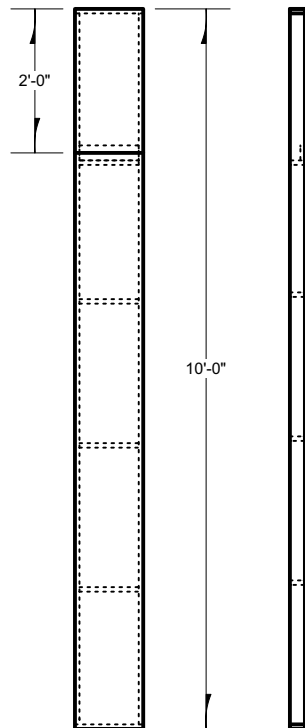
PAGE

2 OF 4

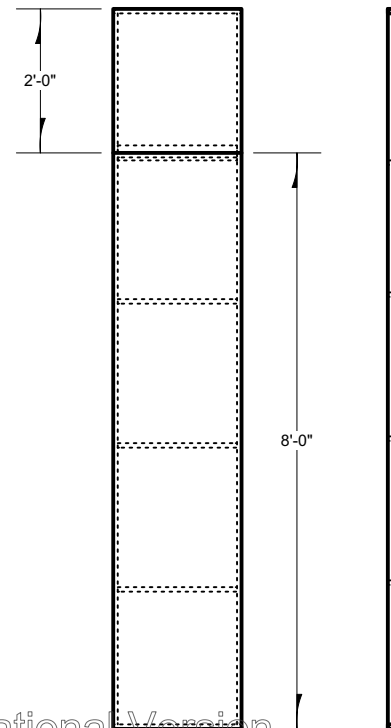
5



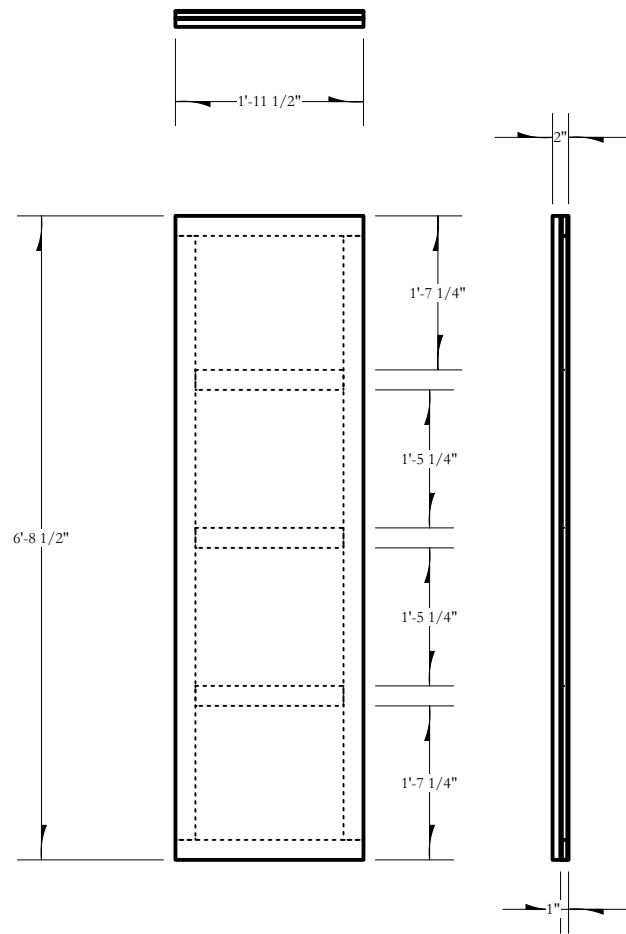
1



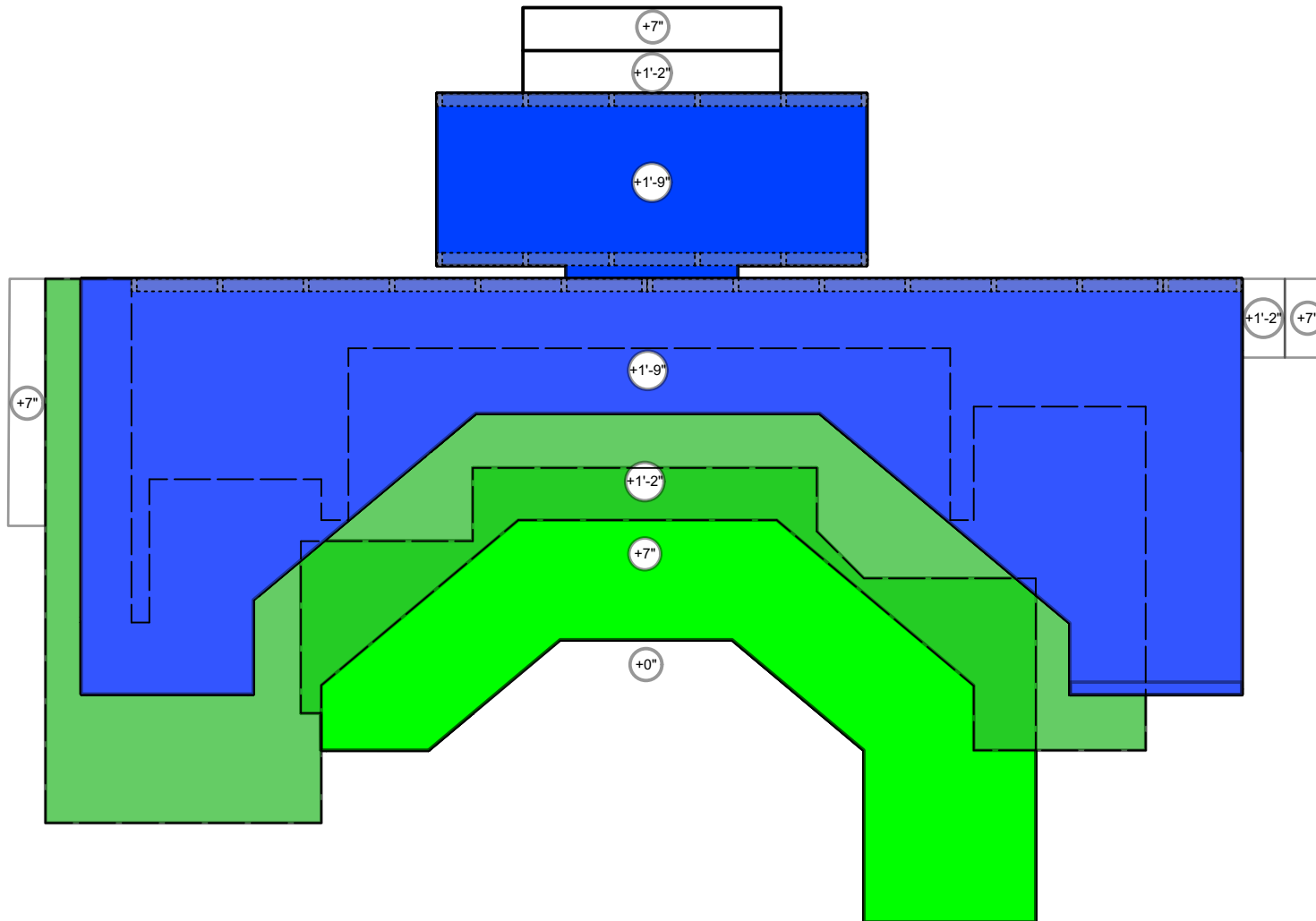
9



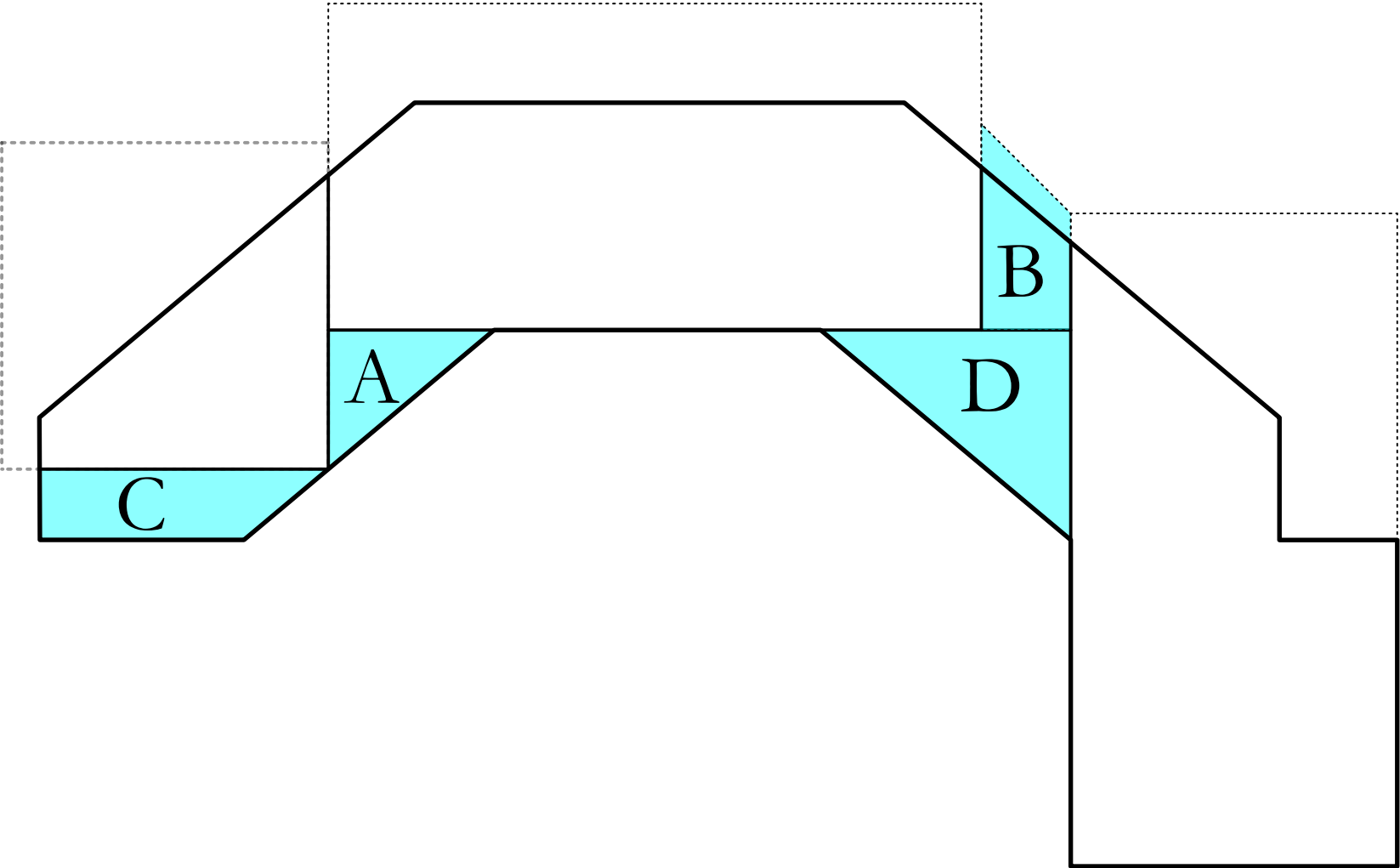
|  |
|--|
| EVERYBODY  |
| BY BRANDEN<br>JACOB-JENKINS  |
| UNIVERSITY OF<br>GEORGIA   |
| CELLAR<br>THEATRE  |
| FINE ARTS BUILDING<br>255 BALDWIN ST, ATHENS, GA 30605   |
| BUILD WITH 1X3 (1X6<br>RIPPED TO 2 1/2") AND<br>FACE WITH SCRAP<br>LUAN.<br>CONNECT 10 & 10.5<br>BEFORE SKINNING |
| SCENIC DESIGNER<br>LINDSEY<br>TAYLOR   |
| TECHNICAL DIRECTOR<br>N. TOMLIN  |
| SCALE:<br>1/2" = 1' - 00"  |
| CUSTOM US FLATS FOR<br>WALL  |
| REVISION DATE<br>08/28/2024  |
| PAGE<br>3 OF 4   |



|   |
|---|
| EVERYBODY   |
| BY BRANDEN<br>JACOB-JENKINS   |
| UNIVERSITY OF<br>GEORGIA<br>CELLAR<br>THEATRE   |
| FINE ARTS BUILDING<br>255 BALDWIN ST, ATHENS, GA 30605  |
| BUILD WITH 1X3 (1X6<br>RIPPED TO 2 1/2")<br>SKIN BOTH SIDE AND<br>FINISH WITH 1" FOAM<br>USE POCKET HOLE TO<br>BUILD HOLLYWOOD<br>STYLE |
| SCENIC DESIGNER<br>LINDSEY<br>TAYLOR  |
| TECHNICAL DIRECTOR<br>N. TOMLIN   |
| SCALE:<br>1/2" = 1' - 00"   |
| DOORS FOR<br>BACKWALL   |
| REVISION DATE<br>08/28/2024   |
| PAGE<br>4 OF 4  |

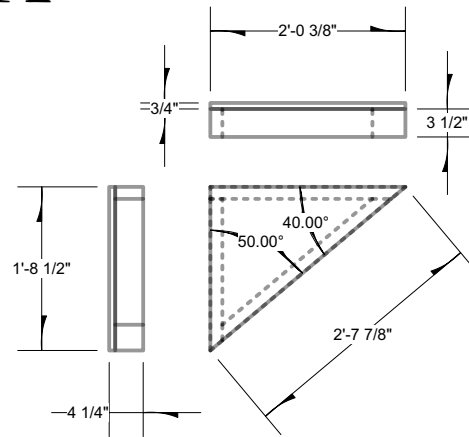


|   |
|---|
| EVERYBODY   |
| BY BRANDEN<br>JACOB-JENKINS   |
| UNIVERSITY OF<br>GEORGIA  |
| CELLAR<br>THEATRE   |
| FINE ARTS BUILDING<br>255 BALDWIN ST, ATHENS, GA 30605  |
| THE PLATFORMS ARE<br>ALL BUILT USING AS<br>MANY STOCK<br>PLATFORMS AS<br>POSSIBLE. THEY WILL<br>HAVE MASONITE<br>FACING |
| SCENIC DESIGNER<br>LINDSEY<br>TAYLOR  |
| TECHNICAL DIRECTOR<br>N. TOMLIN   |
| SCALE:<br>1/4" = 1' - 00"   |
| PLATFORM ASSEMBLY<br>LAYOUT   |
| REVISION DATE<br>08/28/2024   |
| PAGE<br>1 OF 10   |

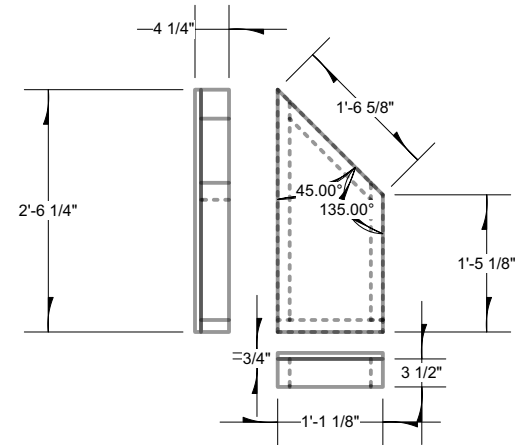


|  |
|--|
| EVERYBODY  |
| BY BRANDEN<br>JACOB-JENKINS  |
| UNIVERSITY OF<br>GEORGIA<br>CELLAR<br>THEATRE  |
| FINE ARTS BUILDING<br>255 BALDWIN ST, ATHENS, GA 30605   |
| THE PLATFORMS IN<br>BLUE ARE THE ONES<br>NEEDED TO BE BUILT.<br>STOCK PLATFORMS<br>USED<br>2 @ 4' X 8'<br>1 @ 4' X 4'<br>LABEL "L1 - {LETTER}" |
| SCENIC DESIGNER<br>LINDSEY<br>TAYLOR   |
| TECHNICAL DIRECTOR<br>N. TOMLIN  |
| SCALE:<br>1/4" = 1' - 00"  |
| PLATFORM LEVEL 1<br>LAYOUT   |
| REVISION DATE<br>08/28/2024  |
| PAGE<br>2 OF 11  |

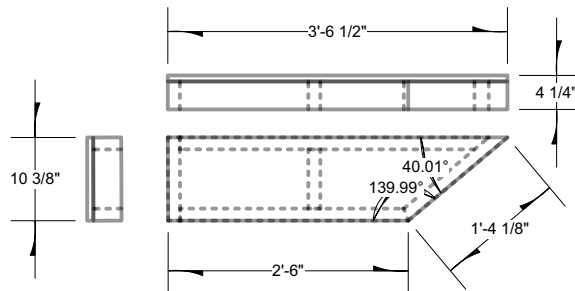
A



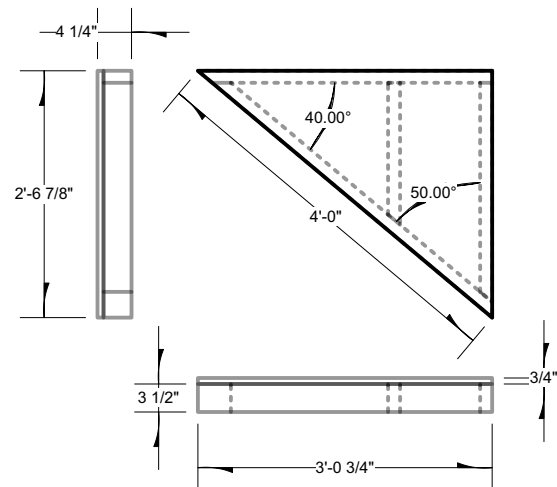
B



C



D



EVERYBODY

BY BRANDEN  
JACOB-JENKINS

UNIVERSITY OF

GEORGIA

CELLAR  
THEATRE

FINE ARTS BUILDING  
255 BALDWIN ST, ATHENS, GA 30605

ALL PLATFORMS ARE  
MADE WITH 2X4 FRAMES  
AND 3/4" PLYWOOD.

ONCE ALL OF THE  
PLATFORMS ARE IN  
PLACE, THEY WILL BE  
SKINED WITH MASONITE  
LABEL "L1 - {LETTER}"

SCENIC DESIGNER

LINDSEY  
TAYLOR

TECHNICAL DIRECTOR

N. TOMLIN

SCALE:

1/2" = 1' - 00"

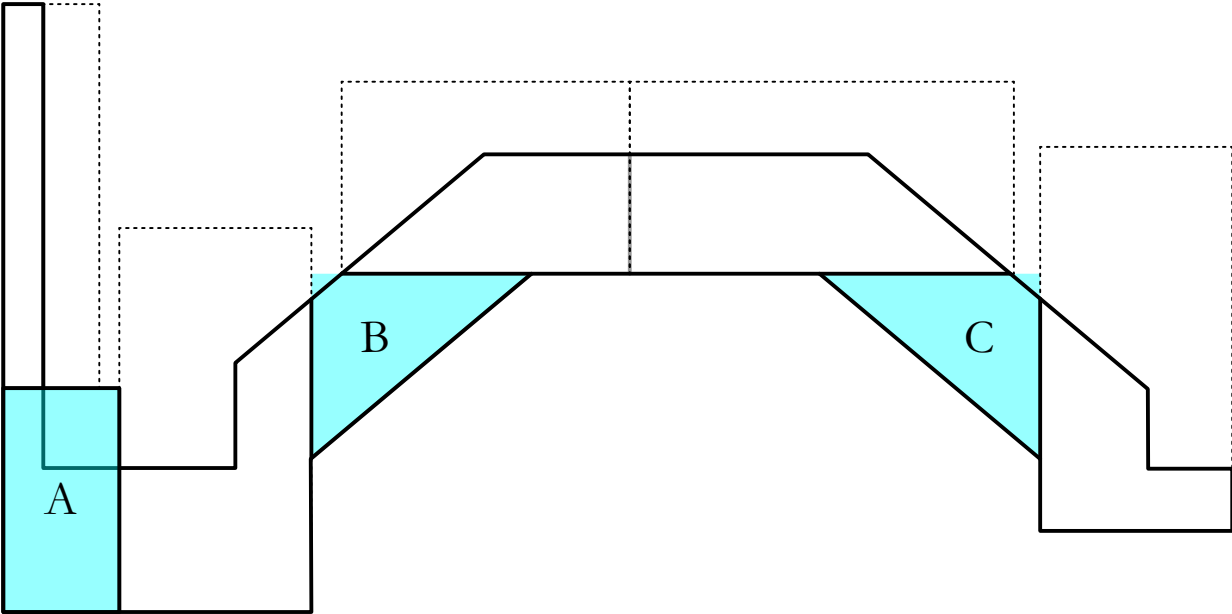
PLATFORM LEVEL 1  
CUSTOMS TO BUILD

REVISION DATE

08/28/2024

PAGE

3 OF 11



EVERYBODY

BY BRANDEN  
JACOB-JENKINS

UNIVERSITY OF

GEORGIA

CELLAR  
THEATRE

FINE ARTS BUILDING  
255 BALDWIN ST, ATHENS, GA 30605

THE PLATFORMS IN  
BLUE ARE THE ONES  
NEEDED TO BE BUILT.  
STOCK PLATFORMS  
USED

3 @ 4' X 8'

1 @ 4' X 6'

1 @ 2' X 8'

LABEL "L2 - {LETTER}"

SCENIC DESIGNER

LINDSEY  
TAYLOR

TECHNICAL DIRECTOR

N. TOMLIN

SCALE:

1/4" = 1' - 00"

PLATFORM LEVEL 2  
LAYOUT

REVISION DATE

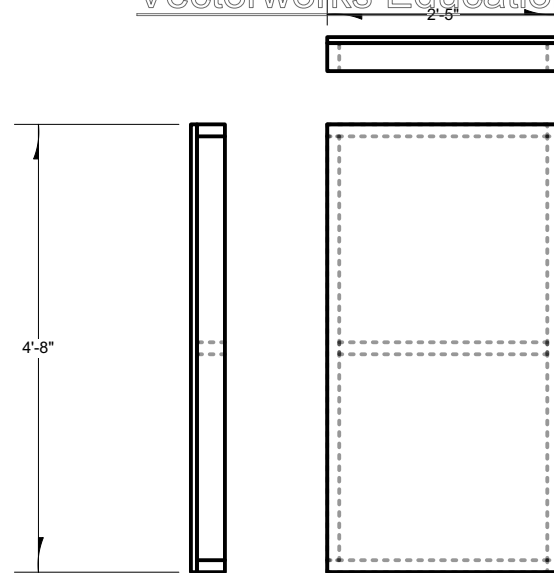
08/28/2024

PAGE

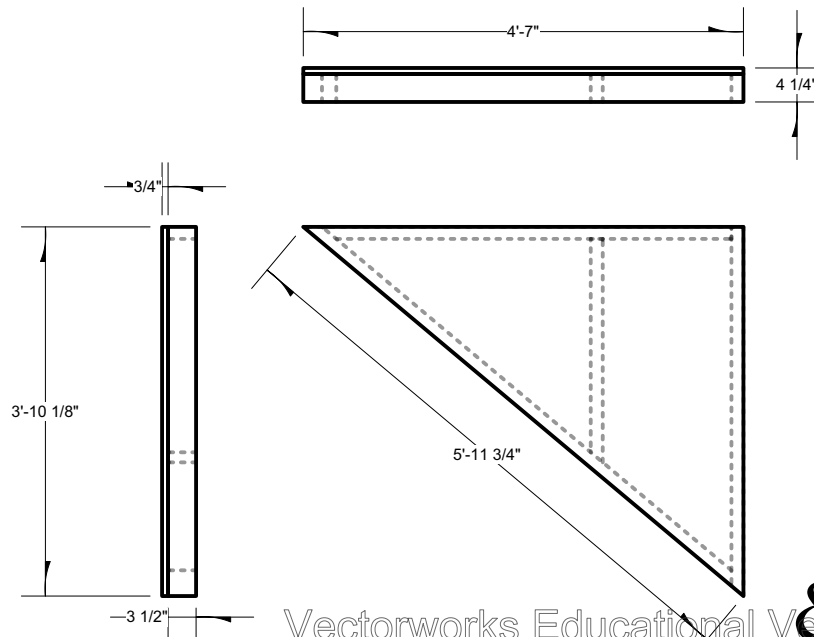
4 OF 10

A

Vectorworks Educational Version

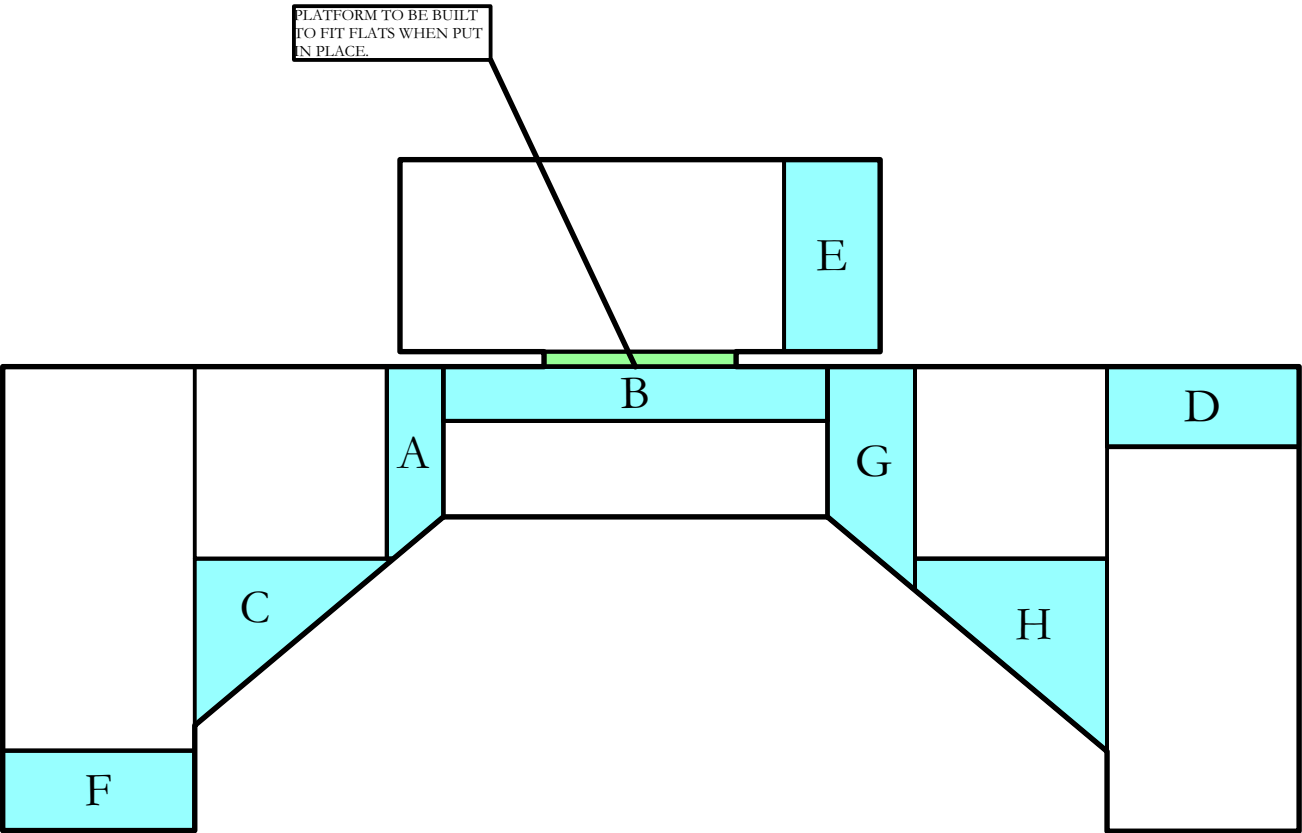


|   |
|---|
| EVERYBODY   |
| BY BRANDEN<br>JACOB-JENKINS   |
| UNIVERSITY OF<br>GEORGIA<br>CELLAR<br>THEATRE   |
| FINE ARTS BUILDING<br>255 BALDWIN ST, ATHENS, GA 30605  |
| ALL PLATFORMS ARE<br>MADE WITH 2X4 FRAMES<br>AND 3/4" PLYWOOD.<br>ONCE ALL OF THE<br>PLATFORMS ARE IN<br>PLACE, THEY WILL BE<br>SKINED WITH MASONITE<br>LABEL "L2 - {LETTER}" |
| SCENIC DESIGNER<br>LINDSEY<br>TAYLOR  |
| TECHNICAL DIRECTOR<br>N. TOMLIN   |
| SCALE:<br>1/2" = 1' - 00"   |
| PLATFORM LEVEL 2<br>CUSTOMS TO BUILD  |
| REVISION DATE<br>08/28/2024   |
| PAGE<br>5 OF 11   |



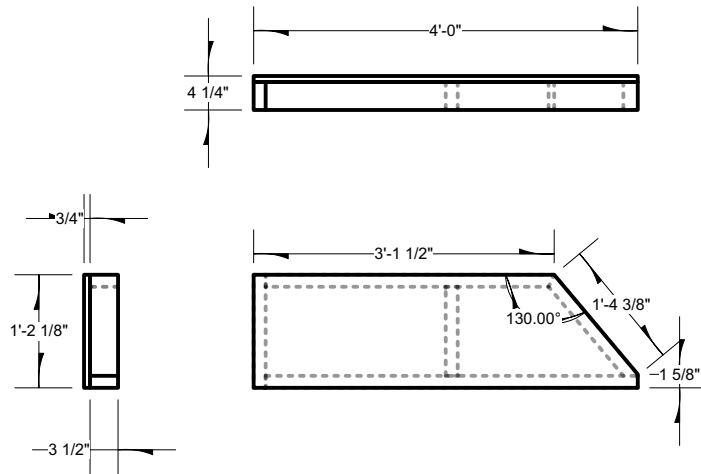
B&C  
REVERSE  
& REPEAT

Vectorworks Educational Version



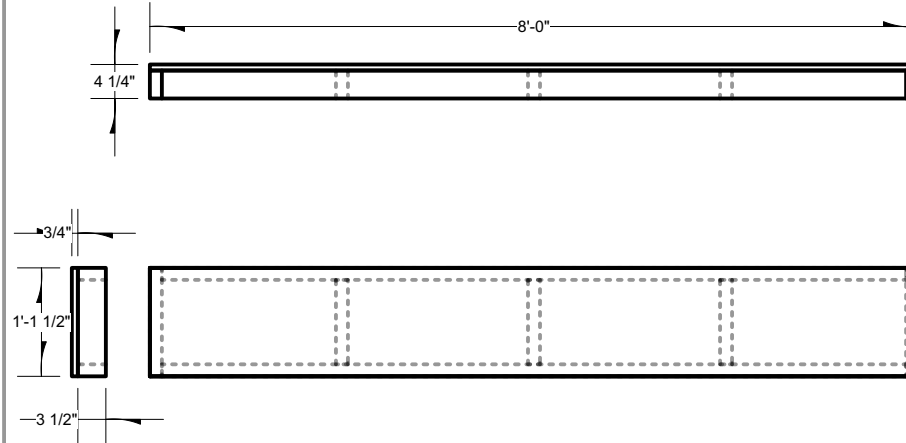
|  |
|--|
| EVERYBODY  |
| BY BRANDEN JACOB-JENKINS   |
| UNIVERSITY OF GEORGIA  |
| CELLAR THEATRE   |
| FINE ARTS BUILDING<br>255 BALDWIN ST, ATHENS, GA 30605   |
| THE PLATFORMS IN BLUE ARE THE ONES NEEDED TO BE BUILT.<br>STOCK PLATFORMS USED<br>3 @ 4' X 8'<br>2 @ 4' X 4'<br>1 @ 2' X 8"<br>LABEL "L3 - {LETTER}" |
| SCENIC DESIGNER<br>LINDSEY TAYLOR  |
| TECHNICAL DIRECTOR<br>N. TOMLIN  |
| SCALE:<br>1/4" = 1' - 00"  |
| PLATFORM LEVEL 3<br>ASSEMBLY LAYOUT  |
| REVISION DATE<br>08/28/2024  |
| PAGE<br>6 OF 11  |

A

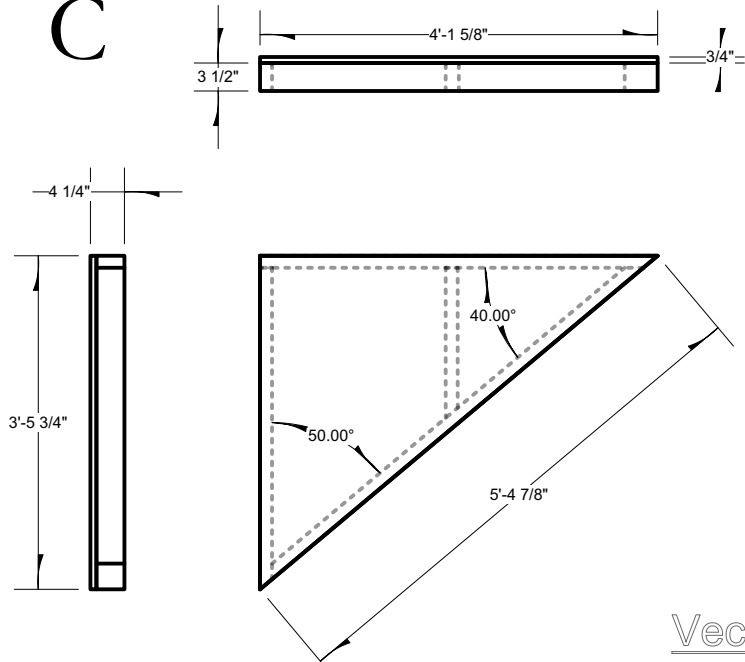


Vectorworks Educational Version

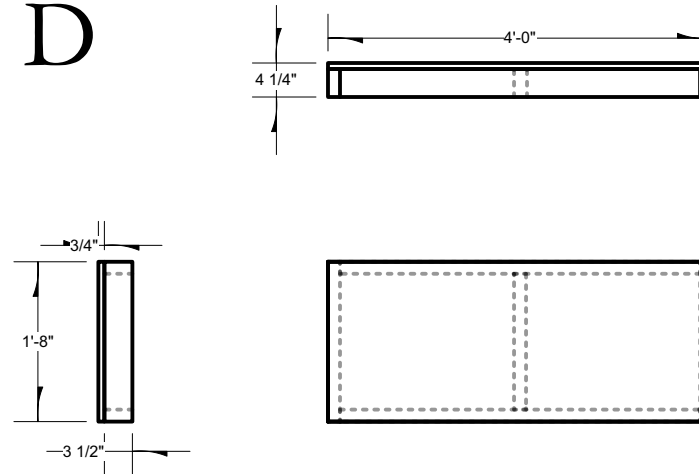
B



C



D



Vectorworks Educational Version

EVERYBODY

BY BRANDEN  
JACOB-JENKINS

UNIVERSITY OF

GEORGIA

CELLAR  
THEATREFINE ARTS BUILDING  
255 BALDWIN ST, ATHENS, GA 30605ALL PLATFORMS ARE  
MADE WITH 2X4 FRAMES  
AND 3/4" PLYWOOD.ONCE ALL OF THE  
PLATFORMS ARE IN  
PLACE, THEY WILL BE  
SKINED WITH MASONITE  
LABEL "L3 - {LETTER}"

SCENIC DESIGNER

LINDSEY  
TAYLOR

TECHNICAL DIRECTOR

N. TOMLIN

SCALE:

1/2" = 1' - 00"

PLATFORM LEVEL 3  
CUSTOMS TO BUILD A-D

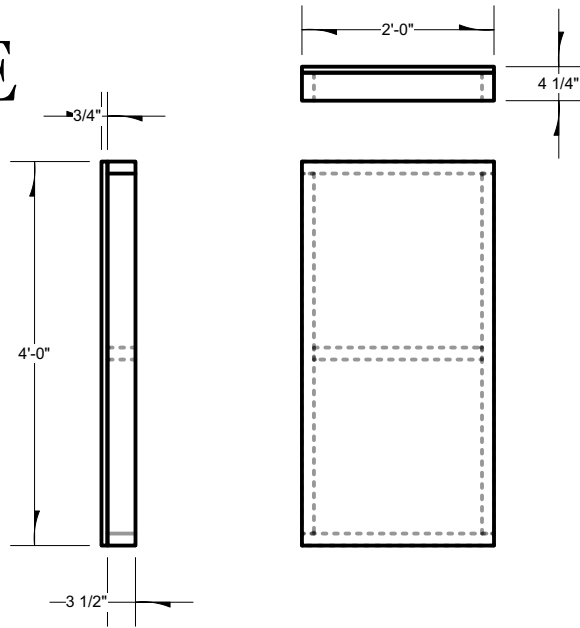
REVISION DATE

08/28/2024

PAGE

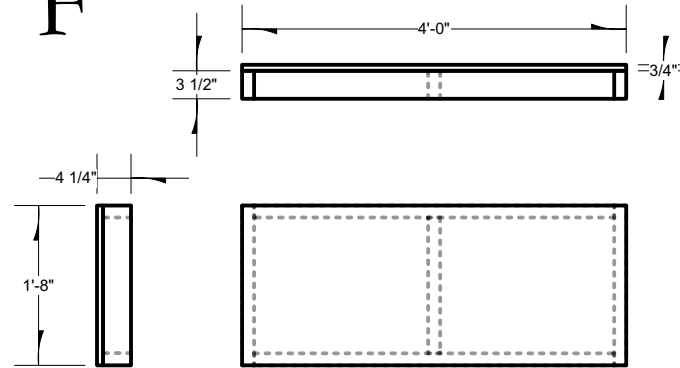
7 OF 11

E

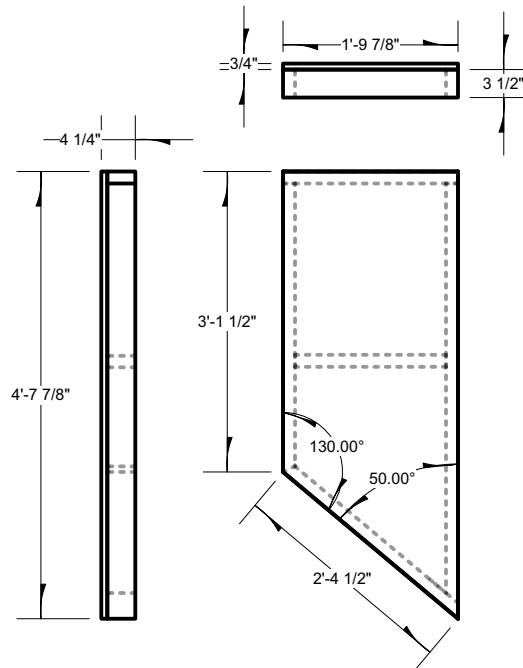


Vectorworks Educational Version

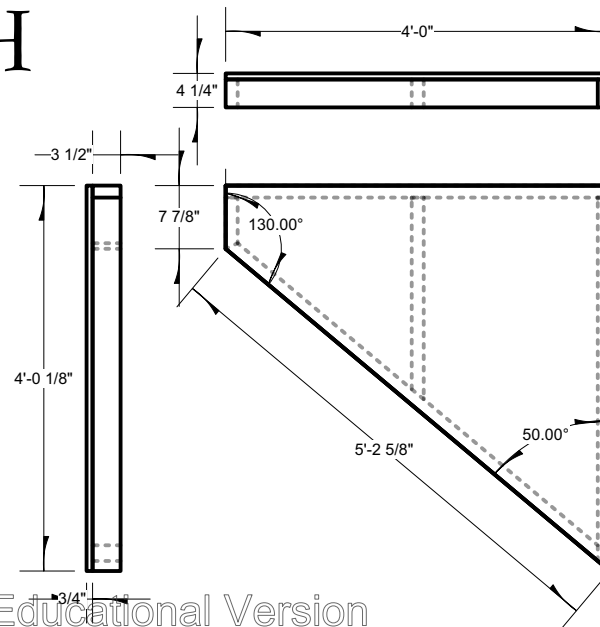
F



G



H



Vectorworks Educational Version

EVERYBODY

BY BRANDEN  
JACOB-JENKINS

UNIVERSITY OF

GEORGIA

CELLAR  
THEATREFINE ARTS BUILDING  
255 BALDWIN ST, ATHENS, GA 30605ALL PLATFORMS ARE  
MADE WITH 2X4 FRAMES  
AND 3/4" PLYWOOD.ONCE ALL OF THE  
PLATFORMS ARE IN  
PLACE, THEY WILL BE  
SKINED WITH MASONITE  
LABEL "L3 - {LETTER}"

SCENIC DESIGNER

LINDSEY  
TAYLOR

TECHNICAL DIRECTOR

N. TOMLIN

SCALE:

1/2" = 1' - 00"

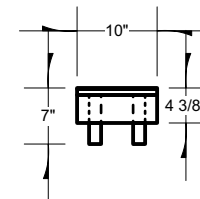
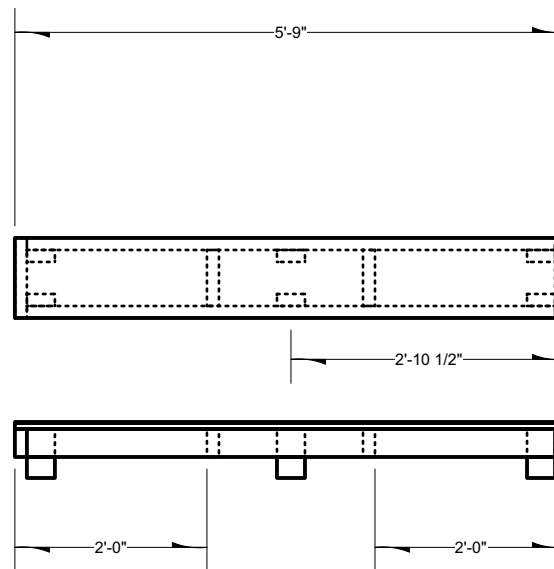
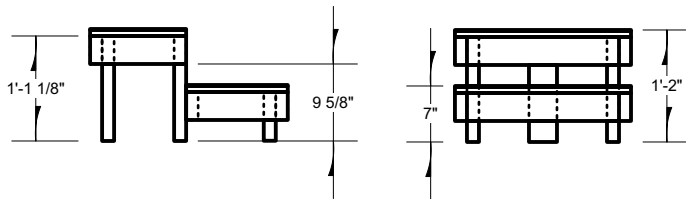
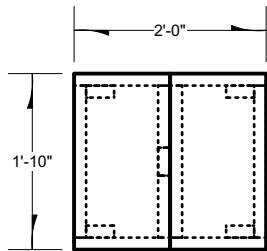
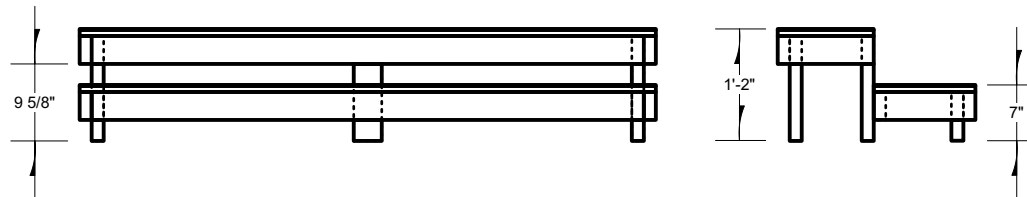
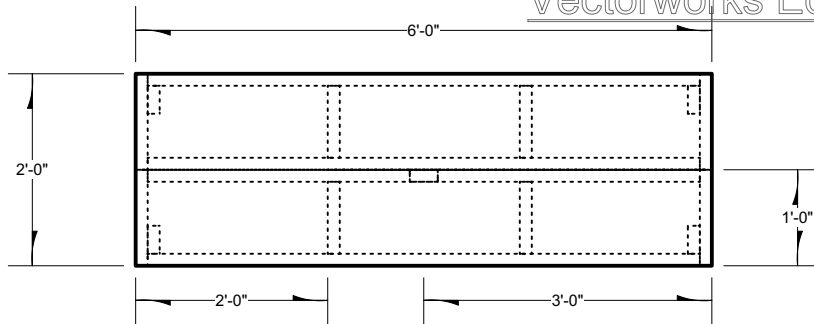
PLATFORM LEVEL 3  
CUSTOMS TO BUILD E-H

REVISION DATE

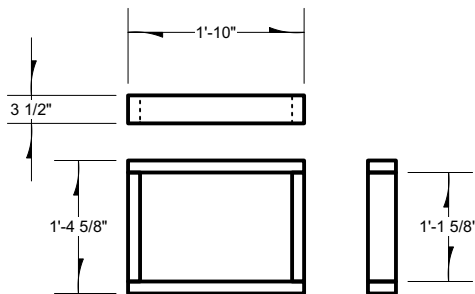
08/28/2024

PAGE

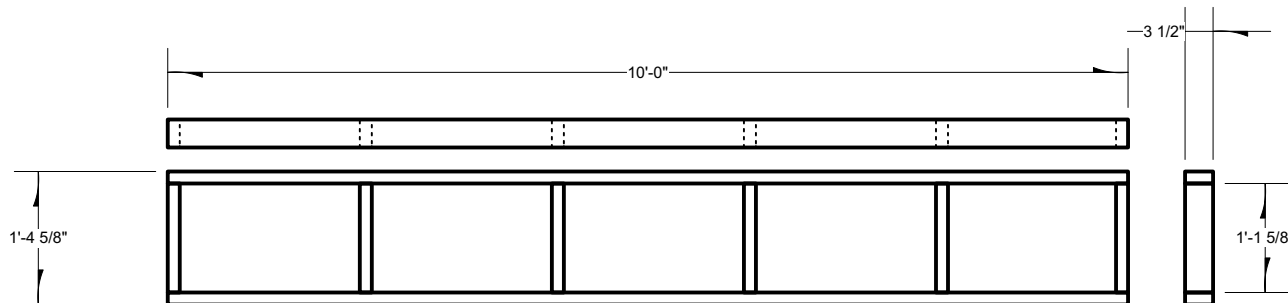
8 OF 11



|   |
|---|
| EVERYBODY   |
| BY BRANDEN<br>JACOB-JENKINS   |
| UNIVERSITY OF<br>GEORGIA<br>CELLAR<br>THEATRE   |
| FINE ARTS BUILDING<br>255 BALDWIN ST, ATHENS, GA 30605  |
| ALL STEPS ARE MADE<br>WITH 2X4 FRAMING<br>AND HAVE THE SAME<br>FINISH AS THE<br>PLATFORMS<br>TOENAIL THEM TO<br>THE PLATFORMS AND<br>FLOORS |
| SCENIC DESIGNER<br>LINDSEY<br>TAYLOR  |
| TECHNICAL DIRECTOR<br>N. TOMLIN   |
| SCALE:<br>1/2" = 1' - 00"   |
| STEP UNITS  |
| REVISION DATE<br>08/28/2024   |
| PAGE<br>9 OF 11   |



X2



EVERYBODY  
BY BRANDEN  
JACOB-JENKINS  
UNIVERSITY OF  
GEORGIA  
CELLAR  
THEATRE  
FINE ARTS BUILDING  
255 BALDWIN ST, ATHENS, GA 30605

2X4 CONSTRUCTION  
AVOID LARGE KNOTS  
& SPLITS IN THE  
BOARDS  
1 @ 1' - 10" X 1' - 4 5/8"  
2 @ 12' - 00 X 1' - 4 5/8"  
2 @ 10' - 00 X 1' - 4 5/8"

SCENIC DESIGNER  
LINDSEY  
TAYLOR

TECHNICAL DIRECTOR  
N. TOMLIN

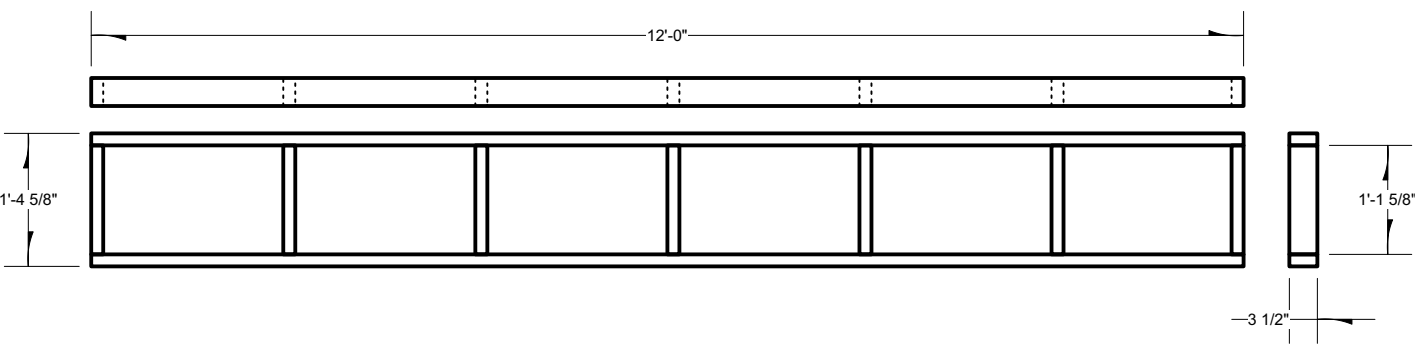
SCALE:  
1/2" = 1' - 00"

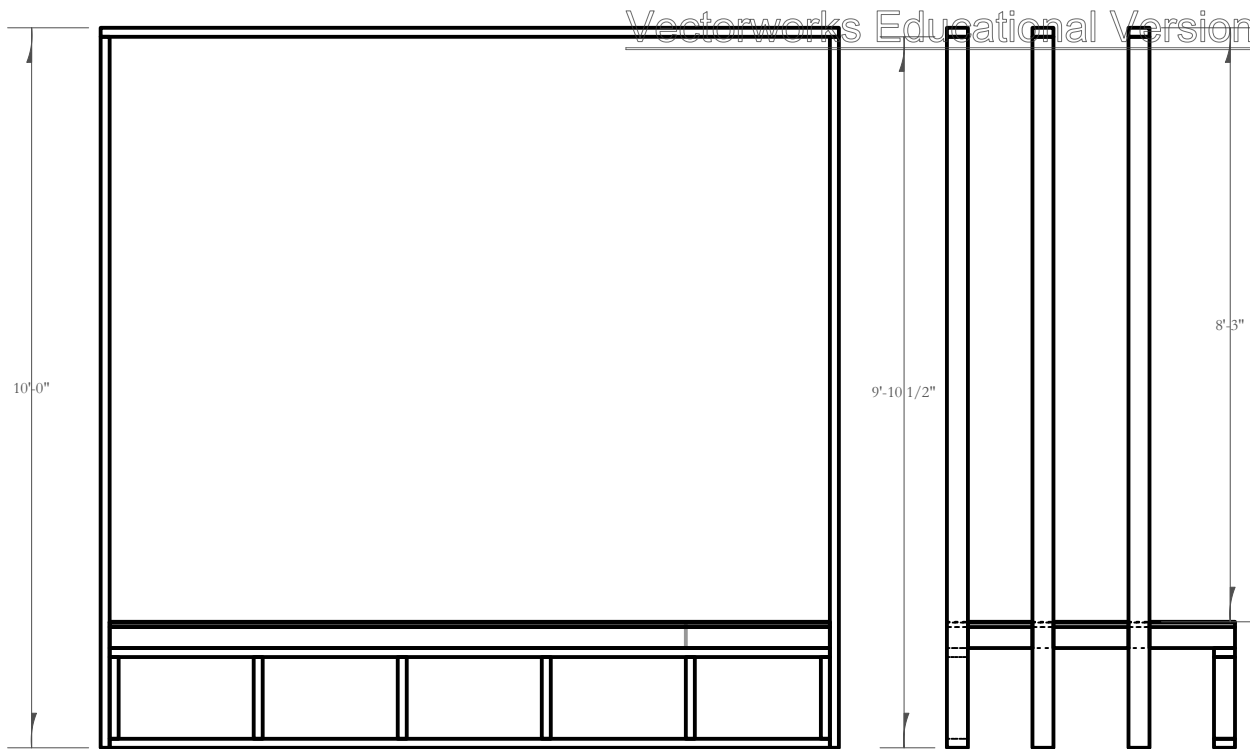
PLATFORM LEVEL 3  
STUD WALLS

REVISION DATE  
08/28/2024

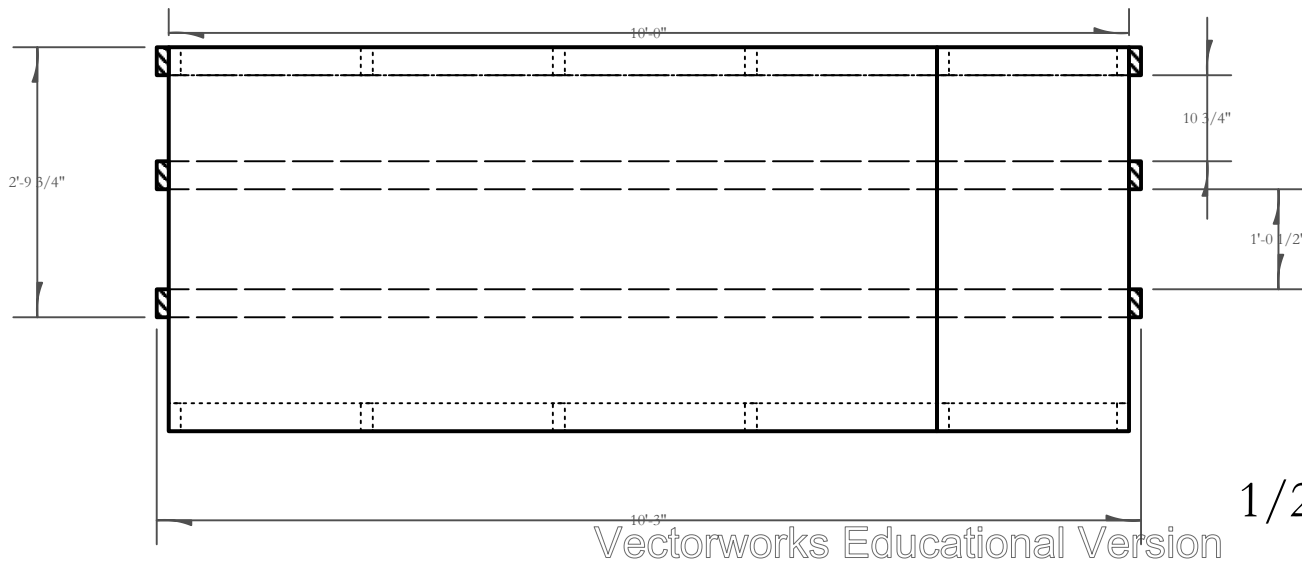
PAGE

X2



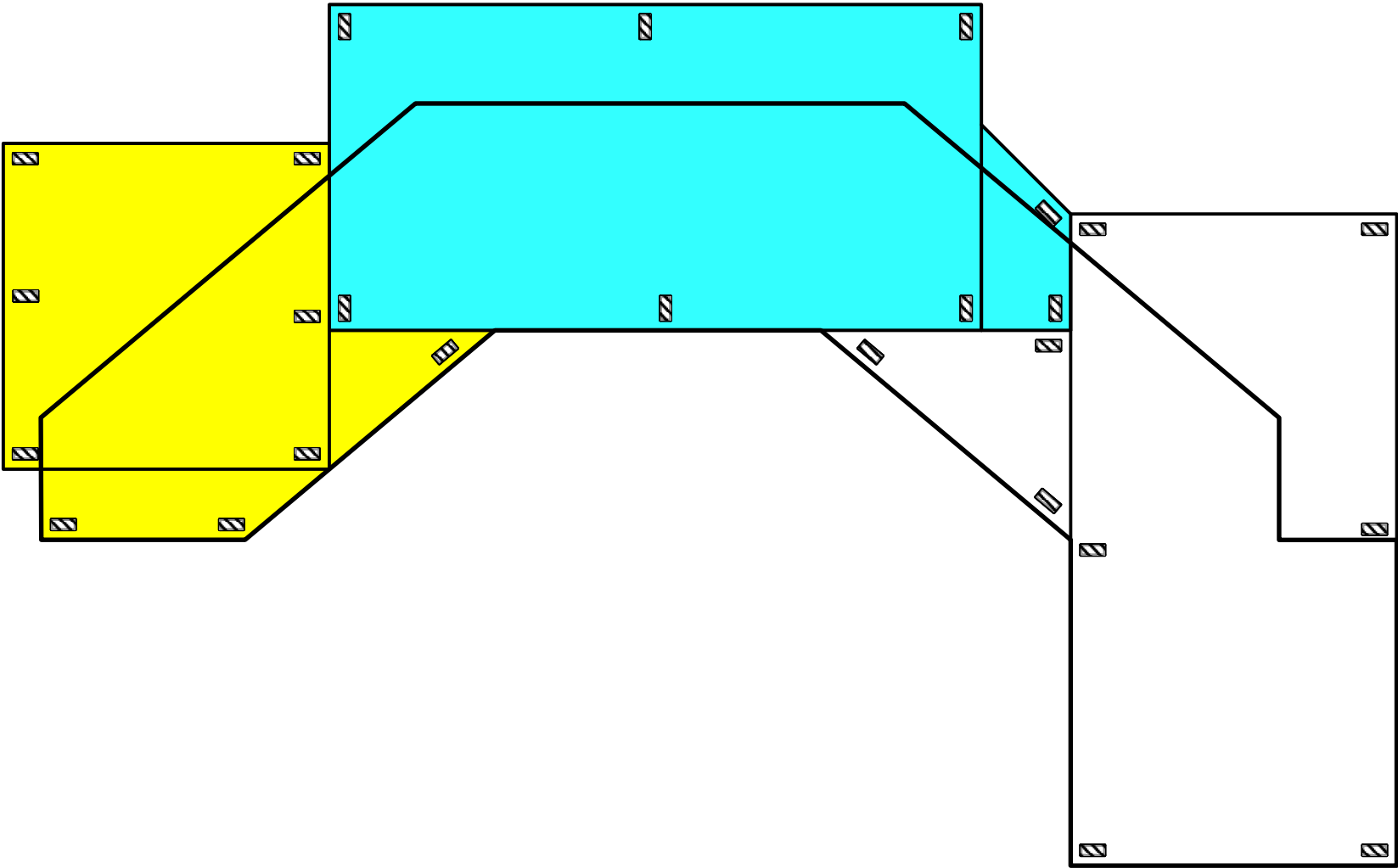


SCALE:  
3/8" = 1' - 00"



SCALE:  
1/2" = 1' - 00"

|  |
|--|
| <b>EVERYBODY</b><br>BY BRANDEN<br>JACOB-JENKINS<br>UNIVERSITY OF<br>GEORGIA<br><b>CELLAR<br/>THEATRE</b><br>FINE ARTS BUILDING<br>255 BALDWIN ST, ATHENS, GA 30605 |
| SCENIC DESIGNER<br><b>LINDSEY<br/>TAYLOR</b>   |
| TECHNICAL DIRECTOR<br><b>N. TOMLIN</b>   |
| SCALE:<br><b>VARIES</b>  |
| SOFTGOODS HANGING<br>BASE  |
| REVISION DATE<br><b>08/28/2024</b>   |
| PAGE<br>11 OF 11   |



EVERYBODY

BY BRANDEN  
JACOB-JENKINS

UNIVERSITY OF

GEORGIA

CELLAR  
THEATRE

FINE ARTS BUILDING  
255 BALDWIN ST, ATHENS, GA 30605

HATCHED LEGS ARE  
2X4S CUT TO 6 1/8"  
PIECES IN COLOR ARE  
BOLTED TOGETHER.  
ADD MORE AS  
NEEDED

SCENIC DESIGNER

LINDSEY  
TAYLOR

TECHNICAL DIRECTOR

N. TOMLIN

SCALE:

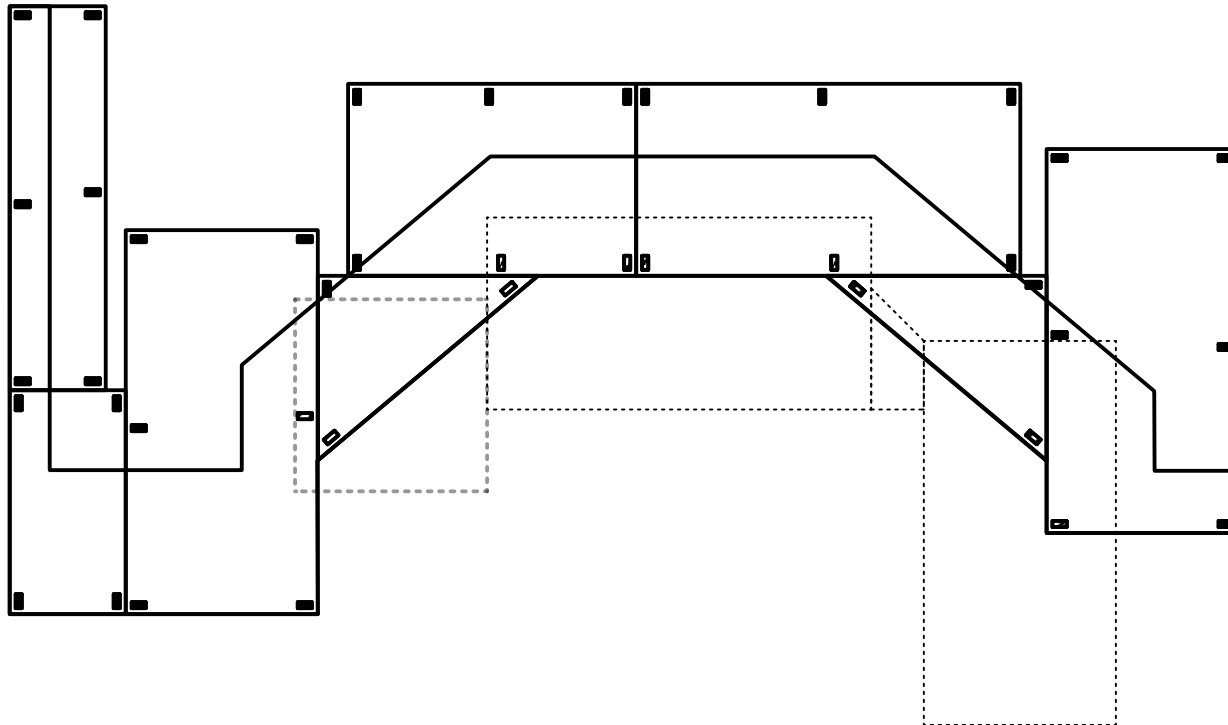
1/2" = 1' - 00"

PLATFORM LEVEL 1  
LEG PLACEMENT

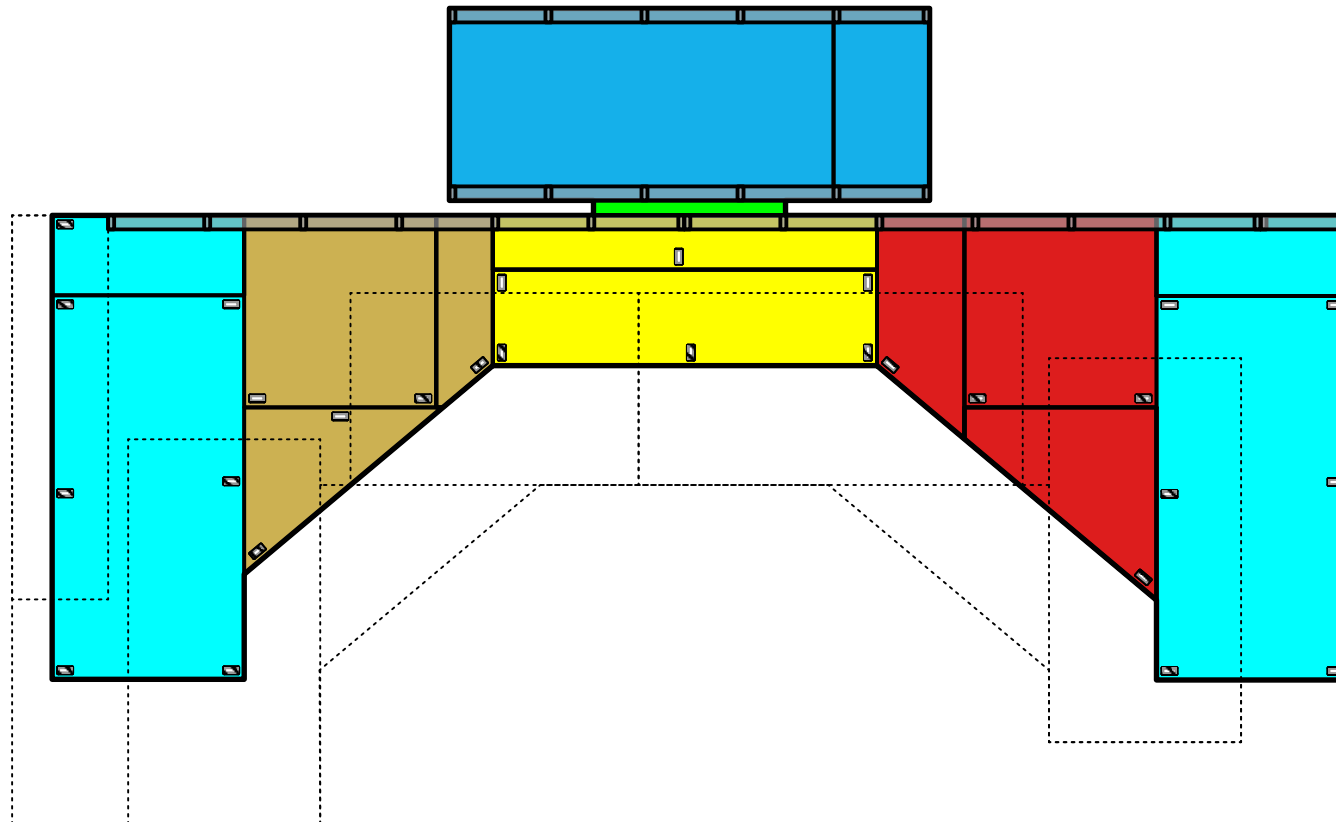
REVISION DATE

08/28/2024

PAGE



|  |
|--|
| EVERYBODY  |
| BY BRANDEN<br>JACOB-JENKINS  |
| UNIVERSITY OF<br>GEORGIA   |
| CELLAR<br>THEATRE  |
| FINE ARTS BUILDING<br>255 BALDWIN ST, ATHENS, GA 30605   |
| HATCHED LEGS ARE<br>2X4S CUT TO 6 1/8"<br>WHITE LEGS ARE 2X4S<br>CUT TO 1'-1 1/8"<br>ADD MORE AS<br>NEEDED |
| SCENIC DESIGNER<br>LINDSEY<br>TAYLOR   |
| TECHNICAL DIRECTOR<br>N. TOMLIN  |
| SCALE:<br>1/4" = 1' - 00"  |
| PLATFORM LEVEL 2<br>LEG PLACEMENT  |
| REVISION DATE<br>08/28/2024  |
| PAGE<br>2 OF 3   |



# EVERYBODY

BY BRANDEN  
JACOB-JENKINS

UNIVERSITY OF

GEORGIA

## CELLAR THEATRE

FINE ARTS BUILDING  
255 BALDWIN ST, ATHENS, GA 30605

HATCHED LEGS ARE  
2X4S CUT TO 6 1/8"  
WHITE LEGS ARE 2X4S  
CUT TO 1'-8 1/8"  
PIECES IN COLOR ARE  
BOLTED TOGETHER  
ADD MORE AS  
NEEDED

SCENIC DESIGNER

LINDSEY  
TAYLOR

TECHNICAL DIRECTOR

N. TOMLIN

SCALE:

1/4" = 1' - 00"

PLATFORM LEVEL 3  
LEG PLACEMENT

REVISION DATE

08/28/2024

PAGE

3 OF 3