



Source: Google Earth, 2018

Showing locations of seismic lines

Line 1 has about 3 m of fill and is at about 3 m greater elevation than Line 2.

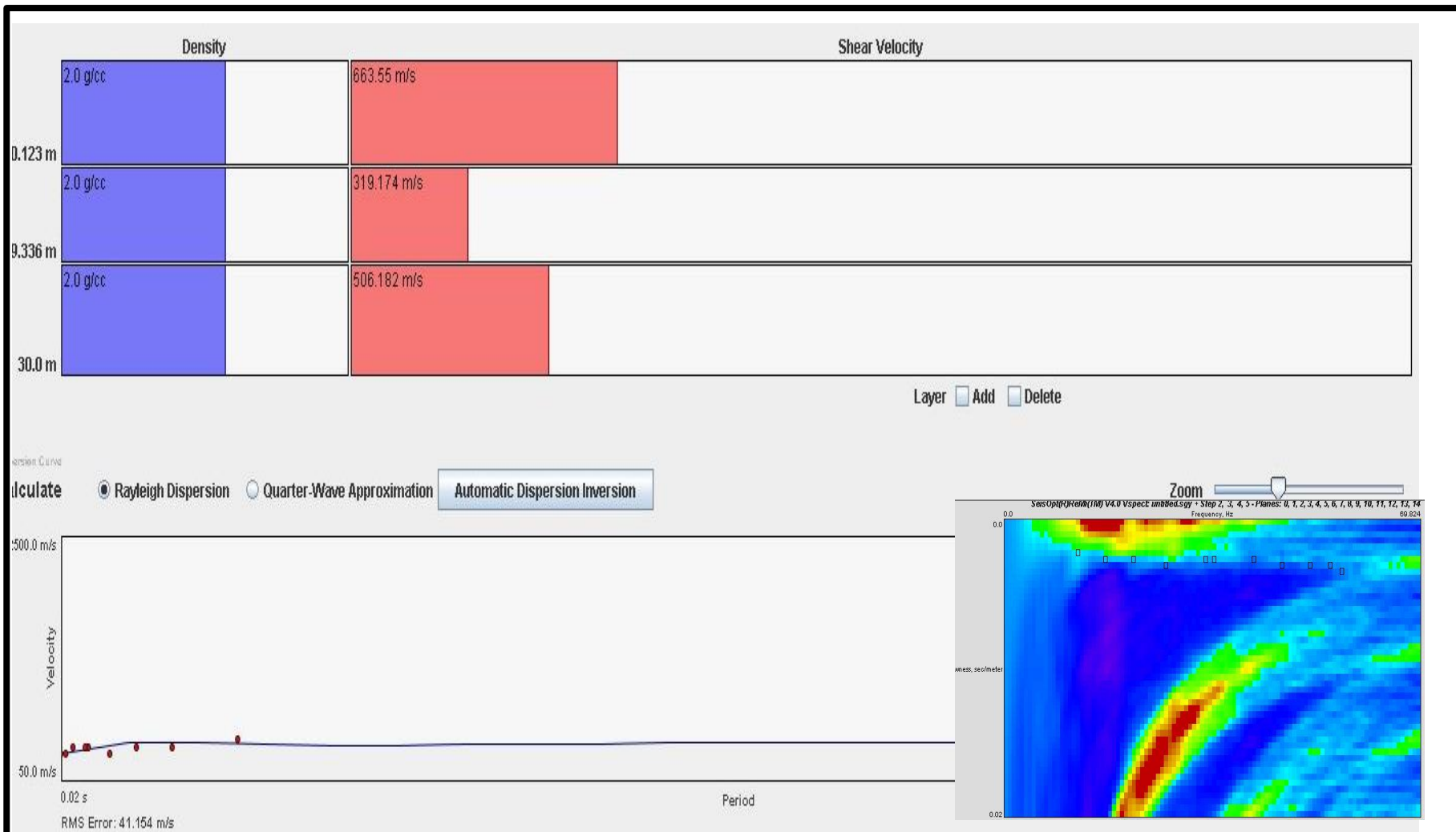
20000  
999 Town Line  
Bloomfield, ON

Seismic Line

Drawing

NTS

1



Source: Google Earth, 2018

Showing locations of seismic lines

Line 1 has about 3 m of fill and is at about 3 m greater elevation than Line 2.

20000  
999 Town Line  
Bloomfield, ON

Seismic Line 1

Drawing

NTS

2

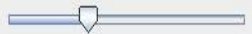
Model Profiles

Mode

☒ Standard
 ☐ Advanced

Detach

Zoom



	Density	Shear Velocity
8.129 m	2.0 g/cc	552.65 m/s
19.274 m	2.0 g/cc	1394.937 m/s
30.0 m	2.0 g/cc	1083.731 m/s

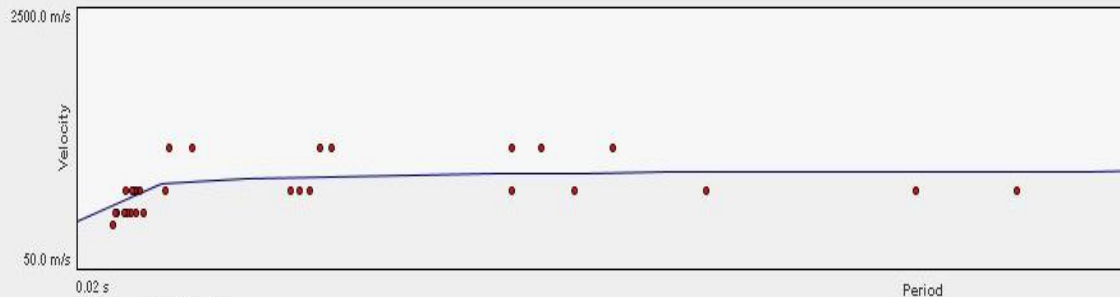
Layer ☐ Add ☐ Delete

Dispersion Curve

Calculate

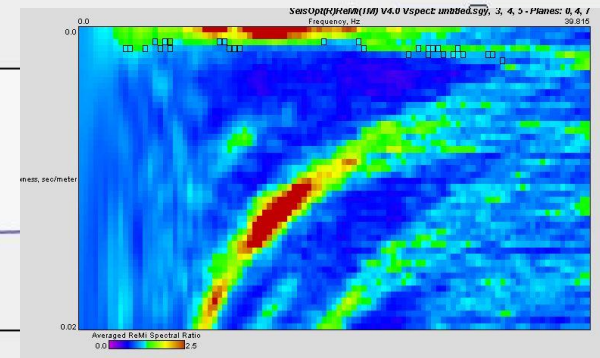
☒ Rayleigh Dispersion
 ☐ Quarter-Wave Approximation

Automatic Dispersion Inversion



RMS Error: 170.453 m/s

Vs = 922.538 IBC Site Class B (IBC 2000 1615.1.1)



DIV. 5002019 ONTARIO LTD



Source: Google Earth, 2018

Showing locations of seismic lines

Line 1 has about 3 m of fill and is at about 3 m greater elevation than Line 2.

 20000  
 999 Town Line  
 Bloomfield, ON

Seismic Line 2

Drawing

NTS

3