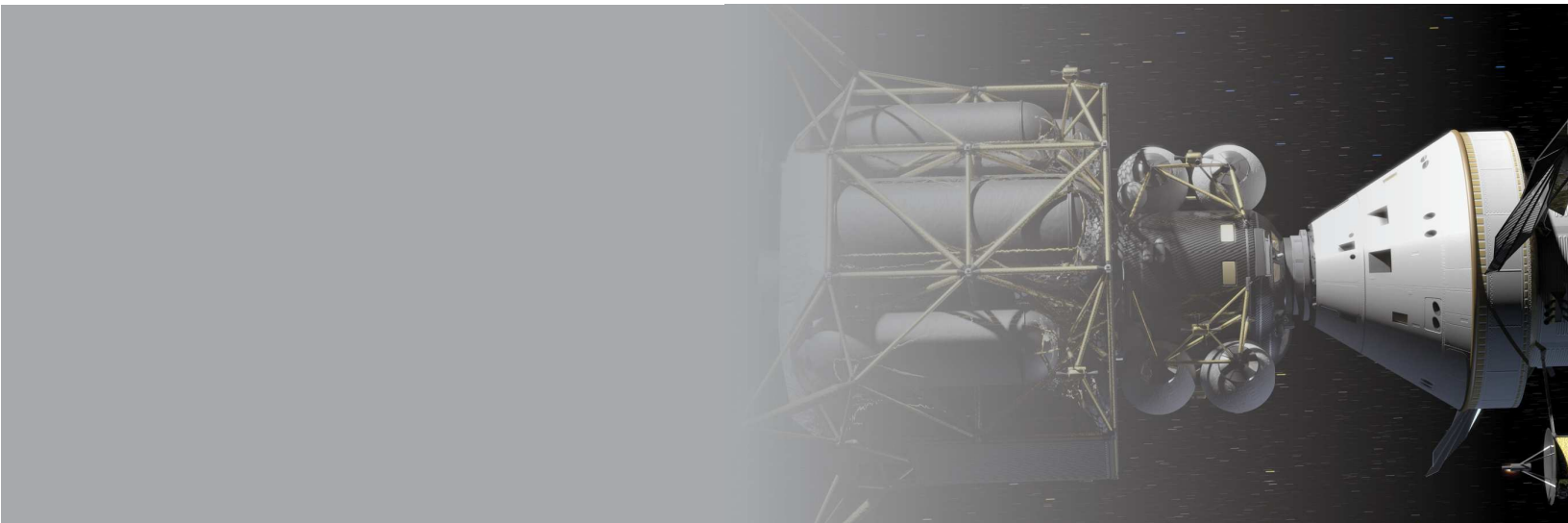


# ALTAIR

# Telemetry Systems

---

Integrated Systems



Portable, Rackmount or Rugged Computer Chassis / Bald Eagle-RF/ Tarsus3-cPCI or  
PCIe / Display & Post Analysis Software

**ULYSSIX**   
**TECHNOLOGIES, INC.**

---

*Where Technology Soars*  
A Woman-Owned Small Business  
[www.ulyssix.com](http://www.ulyssix.com)

# ALTAIR Telemetry Systems

The ALTAIR Telemetry System is an Ulyssix integrated system fully customizable to meet your needs. Offering single or multiple channels, the Altair can be built to support RF, PCM Processing, Data Acquisition, Graphical Realtime Displays, and Post Analysis software processing with network interfacing.

Rugged  
Rackmount  
or Portable  
Computer  
Chassis



Bald  
EagleRF  
PCIe/cPCI  
RF to Bits



## Portable or Rackmount Chassis

ALTAIR Systems can be configured into a rugged portable computers or into higher telemetry stream capacity rackmount computers. This offers a wide variety of solutions for size and total number of channels to fit any telemetry application.

Depending on the chassis chosen, the interconnect pigtail cabling can be mounted to the rear panel of the computer, to a custom bulk head mounting plate or connections through the standard Ulyssix supplied pigtail cables.

## Bald Eagle-RF Receiver

The Ulyssix family of RF cards are DSP implemented multi-mode receivers. The multi-mode Bald Eagle RF's unique approach can receive and demodulate C/S/L/P Band modulated data. The Bald Eagle RF is a daughter card to the Bald Eagle-cPCI PCM processing card and gives a complete RF to Bit Solution.

The Talon RF is a low cost FM receiver integrated into a full length PCI card.

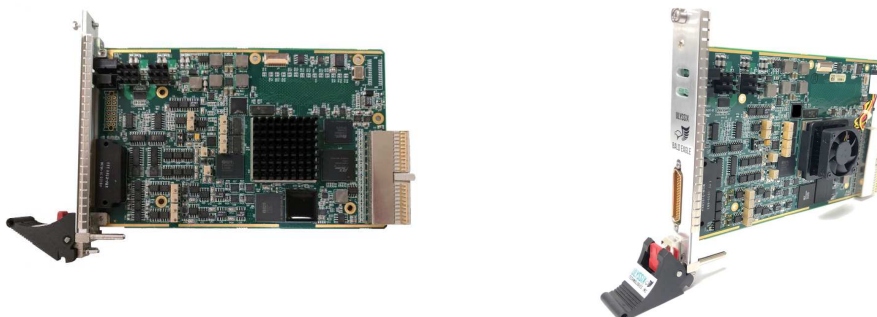
*Where Technology Soars*

# ALTAIR Telemetry Systems

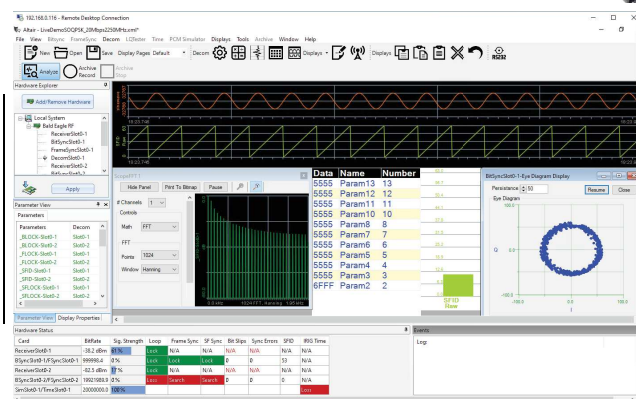
Each ALTAIR system comes fully integrated with user customized hardware and software solutions to exactly fit the customer's requirements. All Ulyssix products come with the Ulyssix ALTAIR Software Suite for no charge. The DEWESoft Software Suite is available for an additional cost.



Tarsus3  
PCIe/cPCI



ALTAIR Setup  
& Display  
Software



## Ulyssix Tarsus3 cPCI/PCIe

The Tarsus 3 cPCI is a Ulyssix 3rd Generation 3U cPCI PCM Processor card 40 Mbps Bit Sync, Frame Sync, Decom, IRIG Time Code Reader and PCM simulator with ALTAIR PCM Software Application. Includes a Standard 9" MDM51 pigtail cable with 8 differential and 17 BNC connectors.

The Tarsus3 series is also available with Dual Bit Sync and Dual Frame sync.

Custom Cables are available upon request. Contact Ulyssix for quotes.

## ALTAIR Software Suite

The Ulyssix ALTAIR Software Suite is designed to work with any of the Ulyssix family products in a Windows based environment. The ALTAIR Software Suite is ideal for a Real Time Checkout application. With self built widgets, no compiling is necessary when creating new displays. ALTAIR has full frame archiving capability through the utilization of Ulyssix hardware and can archive the raw frame dump data to a designated hard drive. This archived data can then be played back using the Bald Eagle™ or TarsusHS-PCI-01™ archive simulator for further processing.

Included in the software suite is the Ulyssix Flash Burn, a Field Programmable Gate Array (FPGA) programming tool. This allows the user to update the on board firmware without sending the hardware back to the factory. Easy to follow Setups, self diagnostic tools, and various adaptable displays are just a few attributes that set the ALTAIR Software Suite apart from the rest.

# Integrated Data Acquisition



## ACME DuraPAC

Portable PCIe computer system featuring:

- Intel Core i7-8700K 3.7 GHz Processor
- 4 PCIe expansion slots
- Capacity for two Tarsus3 PCIe cards or one BaldEagleRF
- 17 inch display



## FlexPAC PCIe or PCI/PCIe

Portable PCI/PCIe computer system featuring:

- 7 PCIe Slots
- Up to three Tarsus3 PCIe cards or BaldEagleRF
- 17 inch display

## FlexPAC III

Portable 3 monitor PCIe computer system featuring:

- Intel Core i7-8700K 3.7 GHz Processor
- 7 PCIe slots
- Up to three Tarsus3 PCIe cards or one BaldEagleRF
- Three 17 inch displays

# Additional Chassis Options

## Marvin Test Solutions

### GX7300, GX7800

19 slot 3U cPCI chassis, 4U 19 inch rackmount or desktop use. Includes cPCI Single Board Computer.



## ACME ECP382

7 slot 3U cPCI portable chassis featuring a 15 inch display.



## Advantech IPC-611

### or IPC-623

4U rackmount chassis with up to 12 PCI slots



## ACME SMK-980

1U Single Rail rackmount KVM



## Advantech ACP-2000

2U rackmount chassis with 3 PCI Slots



**\*Specifications are subject to change without notice.**

Revised: September 06, 2019

7470 New Technology Way, Suite B  
Frederick, MD 21703-8349

telemetry@ulyssix.com

(p) 301.846.4800 (f) 301.846.0686

A Woman-Owned Small Business

