

# Mensor Power Generation



# Pressure Controllers

Pressure controllers / calibrators are used in calibration labs and in plants to increase efficiency and automation in the calibration of transducers, transmitters, gauges and indicators. Units with removable transducers can be placed in restricted areas and because the calibration coefficients reside in the transducer module, the modules can be removed for re-calibration in an efficient and time saving way.



4 Removable Transducers  
2 Channels



3 Removable Transducers  
1 Channels



# CPC6050

## Modular Pressure Controller

- Full scale range: 10" H<sub>2</sub>O to 3045 psi
- Accuracy: 0.01%FS to 0.01%IS-50
- Up to 4 removable / interchangeable transducers
- Two channel - pneumatic media
- Virtual differential channel
- Optional barometer

# CPC4000

## Industrial Pressure Controller

- Full scale range: 5 to 3045 psi
- Accuracy: 0.02%FS to 0.02%IS-50
- Up to 2 internal transducers
- Single channel - pneumatic media
- Optional barometer

## CPC8000

### High-End Pressure Controller

- Full scale range: 5 to 6000 psi
- Accuracy: 0.01%FS to 0.008%IS-33
- Up to 3 removable / interchangeable transducers
- Single channel - pneumatic media
- Optional barometer

## CPC7000

### Pneumatic High-Pressure Controller

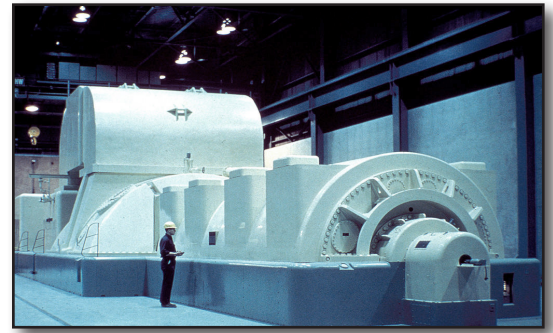
- Full scale range: 1500 to 10,000 psi
- Accuracy: 0.01%FS to 0.01%IS-50
- Up to 3 internal Transducers
- Pneumatic media
- Optional barometer

## CPC8000-H Precision High-Pressure Controller

- Full scale range: 23,000 psi
- Accuracy: 0.014%FS to 0.01%IS-50
- Single internal transducer
- Single channel - hydraulic media
- Optional barometer

# Digital Pressure Gauges

Precision digital pressure gauges are used in calibration labs, as mobile transfer standards or serve as a visual monitor of pressure in a plant. They are used to monitor pressure in a process, or used in conjunction with a pressure source to calibrate a pressure gauge or transmitter in the field. Digital pressure gauges can be used with pneumatic or hydraulic media, depending on the gauge and range.



Optional Pump Kit

## CPG1500 Precision Digital Pressure Gauge

- Full scale range: 1.5 to 150,000 psi
- Accuracy: 0.1%FS, 0.025%FS, or 0.05%FS
- WIKA Wireless data logging and communication
- Hydraulic or pneumatic media
- Backlit LCD display
- Intuitive configuration menu
- Hydraulic or pneumatic hand pump kits
- Compatible MyWIKI Device app



## CPG2500 Precision Pressure Indicator

- Full scale range: 10" H<sub>2</sub>O to 42,000 psi
- Accuracy: 0.01%FS to 0.008%IS-33
- Up to 2 internal transducers and a barometer
- Remote transducers to 42,000 psi
- Hydraulic or pneumatic media
- Removable / interchangeable transducers
- Virtual differential channel
- 7" color touchscreen
- RS-232, IEEE-488, USB or Ethernet communication



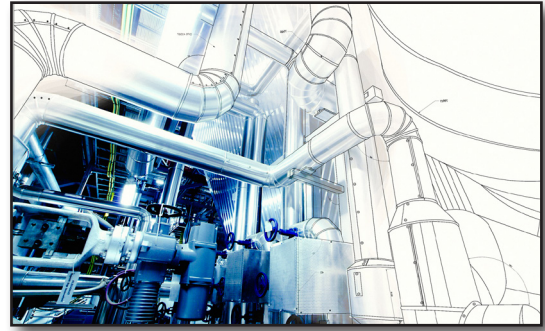
## CPG2400 & CPG2300 Digital Pressure Gauge

- Full scale range: 10" H<sub>2</sub>O to 6000 psi
- One transducer (CPG2400)
- Two transducers (CPG2300)
- CPG2400 accuracy: 0.03%FS
- CPG2300 accuracy: 0.015%FS
- Barometer version available
- Backlit LCD display
- RS-232 or RS-485 communication



# Pressure Transducers

Transducers are compact pressure sensing devices used to measure and transmit a pressure reading in a process, as a pressure transfer standard, or in OEM products requiring a high degree of accuracy. They are used in test stands, calibration and testing laboratories or as point-of-use, highly accurate pressure sensing devices.



## CPT9000 Precision Pressure Transducer Premium Version

- Full scale range: 10" H<sub>2</sub>O to 15,000 psi
- Accuracy: up to 0.008% IS-33
- Temperature compensation: -20 to 75 °C
- RS-232 or RS-485 communication
- Rate / response time: 50Hz / 20 ms (adjustable)
- 316SS construction



## CPT6100 & 6180 Precision Pressure Transducer Standard Version

- CPT6100 full scale range: 10" H<sub>2</sub>O to 6000 psi
- CPT6100 accuracy: 0.01%FS
- CPT6180 full scale range: 15 to 6000 psi
- CPT6180 accuracy: 0.01% IS-50
- Temperature compensation: 15 to 45 °C
- RS-232 or RS-485 communication
- Rate / response time: 50Hz / 20 ms
- Aluminum construction



## CPT6140 Precision Pressure Transducer High Speed Version

- Full scale range: 10" H<sub>2</sub>O to 6000 psi
- Accuracy: 0.025%FS
- Temperature compensation: 15 to 45 °C
- RS-232 or RS-485 communication
- Rate / response time: 250Hz / 4 ms
- Aluminum construction



## CPT6020 Precision Pressure Transducer Basic Version

- Full scale range: 10" H<sub>2</sub>O to 15,000 psi
- Accuracy: 0.02%FS
- Temperature compensation: -20 to 75 °C
- RS-232, RS-485 communication
- Rate / response time: 50Hz / 20 ms
- 316SS construction

# Portable Calibrators

Portable calibrators are used in the plant or on site in field operations to connect directly to field instruments for calibration without removing the instrument from the process. Many of the portable calibrators below have internal pumps for pressure generation and electrical inputs and outputs to calibrate pressure transmitter signals. Data logging, guided calibration procedures, and external transducers are also available.



CPH7000



Accessories and case

## CPH7000 Portable Process Calibrator

- Full scale pressure range: up to 360 psi
- Pressure accuracy: 0.025%FS
- Current measurement range: 0 ... 30 mA
- Current measurement accuracy: 0.01%  $\pm 1\mu\text{A}$
- Current supply range: 0 ... 30 mA
- Current supply accuracy: 0.01%  $\pm 2\mu\text{A}$
- Operating temperature: -20 to 50 °C
- WIKA Wireless communication
- Power supply: 24 VDC
- Data logger
- Calibration assist



## CPH7650 Portable Process Calibrator

- Pressure generation and measurement
- Integrated pump (-12 ... 290 psi)
- Accuracy: 0.025 % FS
- Generation / measurement of 4 ... 20 mA
- DC 24 V supply to power transmitters
- Robust case design with IP67 rating



Pascal 100



Pascal ET

## Pascal 100 & Pascal ET Multi Function Calibrator

- Measurement and simulation of parameters
- Pressure, electrical temperature, frequency and pulse
- Internal pressure/vacuum generation (Pascal 100)
- Color touchscreen with intuitive interface
- Data logger and calibration function
- Intrinsically safe version
- HART® communication



## Custom Calibration Systems

Custom Systems provides racks, benches or carts to combine the components necessary to have a workspace where pressure and electrical calibration can be performed. Each system is built to custom specifications. Systems can contain all manner of components required to perform a calibration, including but not limited to: pressure standards, pressure controllers, pressure supplies, boosters, VOMs, manifolds, tubing, valves, calibration software and anything else to make calibration more efficient.

### Applications

- Calibration of all pressure devices
- Automated calibration
- Calibration of transmitters
- Electrical signal calibration
- Calibration of analog gauges
- Calibration certificates

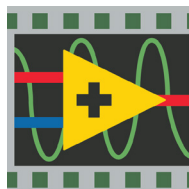


## Calibration Software

WIKA Cal, LabView or custom C++ calibration software for your specific application is available.



WIKA-Cal

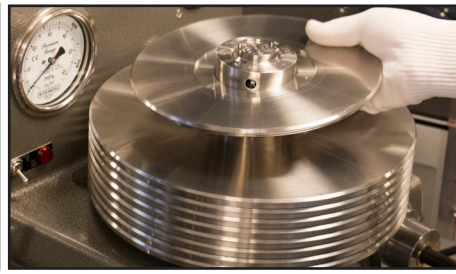
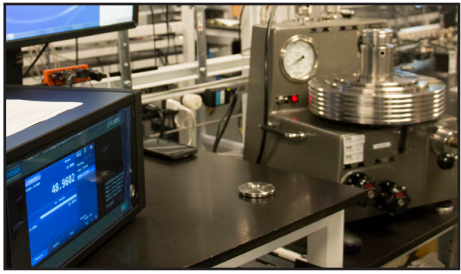


LabView®



C++



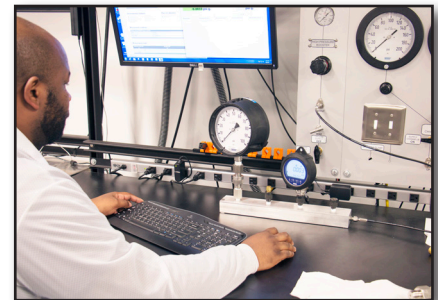


## Calibration / Repair Service

Every instrument produced at Mensor is calibrated before it leaves the factory. When the instrument is due for re-calibration, it can be sent to Mensor where a record of all calibrations are kept for each instrument.

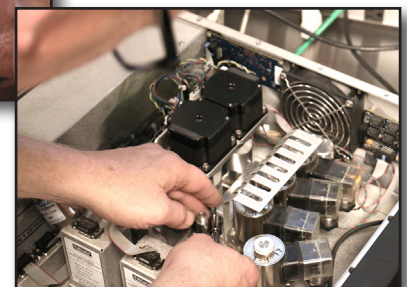
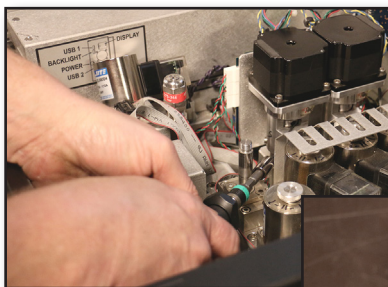
Our lab is accredited by A2LA to ISO 17025, which means your instrument will be calibrated according to the highest level industry standards. Accredited pressure calibrations are available from as low as 10 inches of water up to 30,015 psi.

Mensor also offers a Z540.1, NIST traceable calibration for mechanical gauges, digital gauges, transducers or any pressure measuring device up to 5000 psi. Depending on the accuracy of your device and your in-house quality requirements, this may be a suitable alternative. This calibration service is offered at a reduced price and is not part of our accreditation.



If your instrument is damaged and in need of repair, we have extensive knowledge and repair service capabilities for Mensor and WIKA products.

All repairs at Mensor are covered by a 90 day warranty, which includes parts and labor. Please contact Mensor or your local authorized service center if your instrument requires calibration or repair.



# Mensor Nuclear Power Customers

Beaver Valley 1 & 2  
Catawba 1 & 2  
Davis Besse  
Exelon Power Lab  
Indian Point 2 & 3  
Oconee 1, 2 & 3

Robinson 2  
South Texas Project 1 & 2  
Watts Bar 1 & 2  
Browns Ferry 1, 2 & 3  
Columbia  
Duane Arnold

Grand Gulf  
McGuire 1 & 2  
Perry 1  
Sequoyah 1 & 2  
Waterford 3



**mensor**

201 Barnes Drive  
San Marcos, Tx 78666  
Tel: 512 396 4200  
Toll Free: 800 984 4200  
Fax: 512 396 1820  
Website: [mensor.com](http://mensor.com)  
Email: [tech.support@mensor.com](mailto:tech.support@mensor.com)

