



# iEverydayCARE<sup>®</sup>

## Benefits Summary

Managed by Redirect Health and  
**newpa**  **h**  
Medical

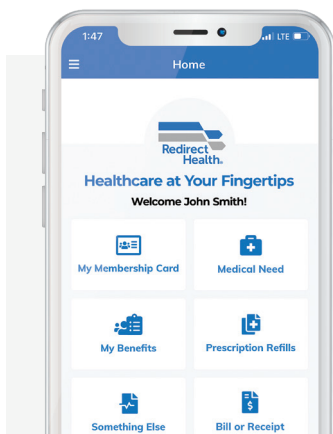
Routine Care can  
**Always be \$0**  
when Redirect Health  
prepares your appointment

**24/7/365**  
In English & Spanish

Welcome to SIMPLE AND TRULY AFFORDABLE virtual-first healthcare on your terms. Your iEverydayCARE<sup>®</sup> membership provides real savings, 24/7/365 access to care, and a dedicated care team to ensure you always get the healthcare you need. Your membership includes primary care (virtual and in-office), mental health, free chiropractic, prescriptions, a large network of doctors, plus low costs for hospitalization and so much more.

# We Put People First! Care Navigation works for everyone.

Finally! Healthcare on your terms – access care anytime, from anywhere, 24/7/365.



## Everything You Want in a Healthcare App – and More



Access Your ID Card(s)



Speak with a Medical Provider



Access Plan Details



Renew Prescriptions



Update Your Information



Submit receipts or billing questions

### Start with the [Redirect Health Member App](#)

- ✓ Available to answer any questions 24/7/365 in English and Spanish
- ✓ If you have a medical need simply use the [Member App](#), call or text
- ✓ Our Care Team is made up of healthcare experts and medical providers



### We Navigate and Coordinate Your Care

- ✓ We'll help you determine if virtual, in-person, urgent, or emergency care is needed
- ✓ Connect to a virtual medical provider at a convenient time for you who will determine if further in-office care is needed
- ✓ We'll assist with any next steps, such as in-office visit scheduling or filling prescriptions at a nearby pharmacy so you never waste any time

### Follow-Up that Matters

- ✓ We find you the right level of care to address your medical needs, so you never pay more than you should
- ✓ Whether you had a virtual or in-person visit, we follow-up after your visit to make sure your care plan is staying on track
- ✓ Ever have a question? The Care Team is available 24/7/365



<p><b>Multiplan  PHCS Practitioner Only</b>        (or add a doctor prior to visit)<sup>†</sup></p>		
<p><b>TO GET THE MOST BENEFITS OUT OF YOUR PLAN ALWAYS START WITH THE <u>APP</u> TO SCHEDULE CARE</b></p>		
<p><b>Routine Care</b>  <b>\$0 member responsibility</b> with Appointment Preparation/Pre-authorization  <b>\$50 member responsibility<sup>2</sup></b> without Appointment Preparation/Pre-authorization</p> <ul style="list-style-type: none"> <li>• Virtual Primary Care (24/7/365)</li> <li>• In-Office Primary</li> <li>• Urgent Care</li> <li>• Annual Adult Physical<sup>1</sup> &amp; Well Child<sup>1</sup></li> <li>• 12 FREE Chiropractic Visit per year</li> <li>• X-rays</li> </ul>		
<p><b>\$0 member responsibility</b>  <b>Labs</b> <a href="https://RedirectHealth.com/iedc-labs">RedirectHealth.com/iedc-labs</a></p>		
<p><b>\$0 member responsibility</b>  <b>Mental Health &amp; Tele-Counseling</b>        No Coverage without Appointment Preparation/Pre-authorization</p>		
<p><b>Rx &amp; Immunizations</b> (Copays \$10, \$25, \$50, \$100)  <a href="https://RedirectHealth.com/iedc-rxformulary">RedirectHealth.com/iedc-rxformulary</a></p>		
<p><b>\$50 member responsibility</b>  <b>Specialist Consults &amp; Care</b>        No Coverage without Appointment Preparation/Pre-authorization</p>		<p><b>Care Navigation Only</b>        Appointment preparation, coordination, navigation, alternative funding management, and pre-negotiations</p>
<p><b>\$50 member responsibility</b>  <b>MRI, PET, CT Scans, Ultrasound &amp; other imaging</b>        No Coverage without Appointment Preparation/Pre-authorization</p>		
<p><b>Hospital Care - Inpatient &amp; Outpatient</b>  <b>Individual - (non-embedded) plan year</b>        \$2,000 Initial Member Responsibility        20% coinsurance   \$4,000 out-of-pocket max<sup>3</sup></p> <p><b>Family - (non-embedded) plan year</b>        \$4,000 Initial Member Responsibility        20% coinsurance   \$6,000 out-of-pocket max<sup>3</sup></p> <p><b>Emergency Room</b>        \$500 Initial Member Responsibility        + 20% Coinsurance        Pre-authorization <b>REQUIRED</b> for ALL NON-EMERGENCY Care</p>		
<p><b>Excluded Services <sup>4</sup></b>        Pre-existing conditions, organ transplants, dialysis, skilled nursing and specialty &amp; non-formulary medications</p>	<p><b>Care Navigation Only</b>        Appointment preparation, coordination, navigation, alternative funding management, and pre-negotiations</p>	

## How your membership works

Get the most out of your healthcare by following these simple steps.

### What if I need care?

Always use the [Member App](#) to schedule care and prepare for your appointments. Many times you'll get everything you need over the phone. Your Care Team will make sure you always get the right care. Never spend more than you should.

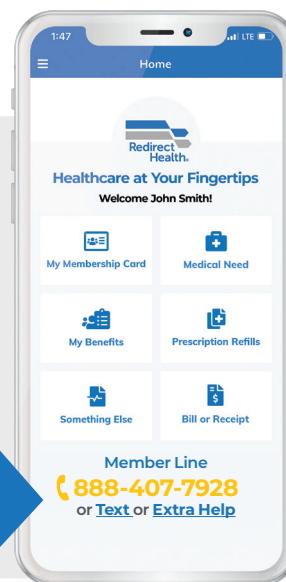
### What if I get a bill?

Submit doctor's bills through the SECURE [Member App](#) (but most times we'll pay your doctor before you get a bill)

### What if I have extra questions?

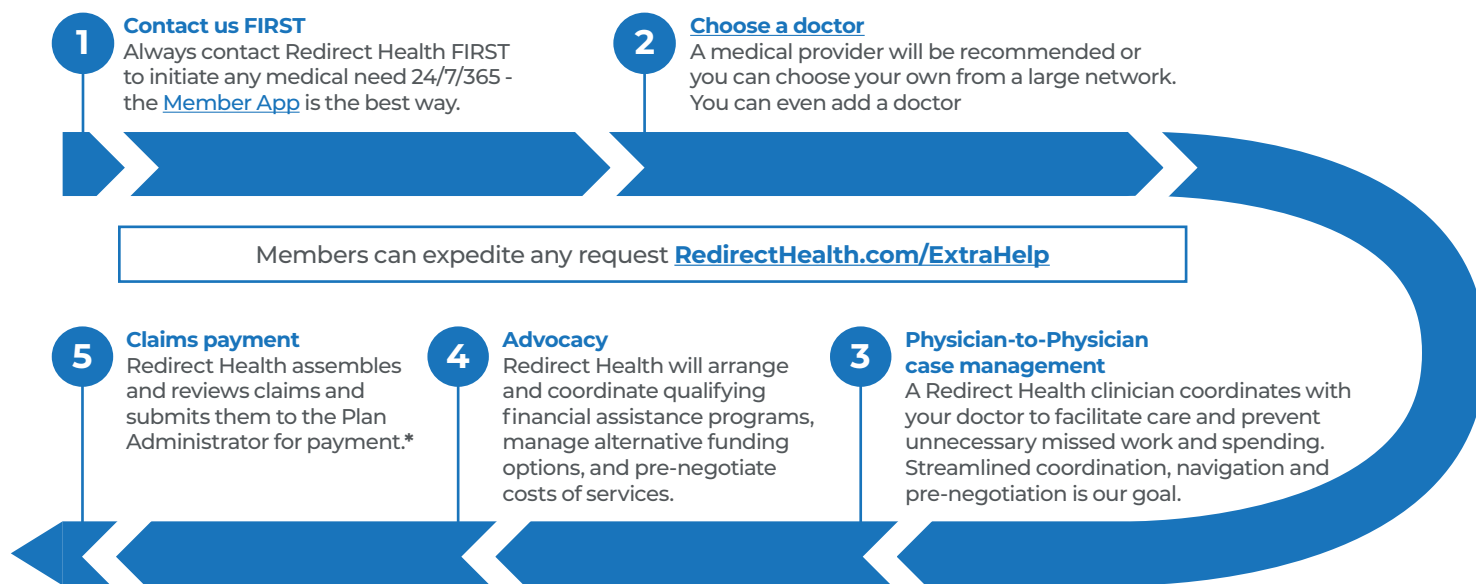
Expedite any request or obstacle on the [Member App](#) or use [RedirectHealth.com/ExtraHelp](https://RedirectHealth.com/ExtraHelp)

Click here to download the App  
[RedirectHealth.com/app](https://RedirectHealth.com/app)



## How Needs are Shared with the Community

Your Redirect Health membership protects you and your family from high-dollar medical expenses



## How Pre-Existing Conditions are shared

A condition is considered pre-existing for a member or dependent if symptoms or treatment have occurred within the 12 months prior to joining the Medical Cost Share. See the Membership Guidelines for detailed description of what will be considered a pre-existing condition. **Controlled diabetes, hypertension, high cholesterol, seasonal allergies and intermittent asthma will not be considered pre-existing when reported prior to membership effective date.**

Conditions beginning after a member's effective date will be shared after paying their \$2,000 initial member responsibility then 20% with a maximum out-of-pocket of \$4,000<sup>A</sup> per year. See the Membership Guidelines for sharing rules.

### Additional Sharing Restrictions

See Member Guidelines for detailed shareable restrictions.

Pre-existing conditions become eligible for sharing based on members' tenure with the plan, as indicated by the following graduated sharing schedule:

Time After Membership Effective Date	Shareable
First 12 months	Not shareable
Months 13-24	Shareable to \$25,000
Months 25-36	Shareable to \$50,000
Month 37 and after	Shareable to \$125,000

\*Specialist, advanced imaging, and hospital claims must be pre-authorized and coordinated by Redirect Health to be eligible for payment. <sup>A</sup>Subject to program sub-limits. Prescription drug benefits are not included in out-of-pocket max calculation..

# Pricing Details

## iEverydayCARE® Individual and Family

Pricing is based off primary members age, the primary is the oldest member of the household.

Effective 11/01/23


### iEverydayCARE® Hospitalization

Managed by 

### iEverydayCARE® Hospitalization

Multiplan 	✓		
	18 - 44 yrs	45 - 59 yrs	60 - 64 yrs
Member Only	\$349*	\$419*	\$509*
Member + Spouse	\$699*	\$819*	\$949*
Member + Child(ren)	\$729*	\$849*	\$979*
Member + Family	\$1,089*	\$1,199*	\$1,239*

### iEverydayCARE® Only

Multiplan 	✓		
	18 - 44 yrs	45 - 59 yrs	60 - 64 yrs
Member Only	\$145	\$145	\$145
Member + Spouse	\$260	\$260	\$260
Member + Child(ren)	\$260	\$260	\$260
Member + Family	\$385	\$385	\$385