



# PLATON TRIANGLE

Residential project



PLATON TRIANGLE  
RESIDENCE

# Glad to have you here at our property

Located in the vibrant Trion Lerarchon street of Limassol, this new residential building blends modern architecture with Mediterranean charm. Designed with sleek lines and large windows, the structure offers views of cityscape. Each apartment is crafted with high-end materials and finishes, providing a luxurious living experience. The building is situated close to key amenities, making it perfect for those who value convenience, style and coastal living.





# Neighbourhood

## PLATON TRIANGLE RESIDENCE

The neighborhood offers a perfect blend of urban convenience and coastal serenity. Located near the seafront, residents enjoy easy access to pristine beaches, ideal for morning walks or weekend relaxation. The area is home to a mix of modern cafes, trendy restaurants, and boutique shops, creating a lively yet laid-back atmosphere.

4 PALLADOS STREET  
LIMASSOL 3016, CYPRUS



# Location

PLATON TRIANGLE  
RESIDENCE

Triangle is also well-connected to the rest of the city, making it a prime location for both professionals and families seeking a balanced lifestyle.





# Points of interests

KEY LOCATIONS	DISTANCE IN MINS	DISTANCE IN KM
Sklavenitis supermarket	1 min drive	0.2 km
AETOS Stadium	4 min drive	1.7 km
Pythagoras School and Kindergarten	4 min drive	1.3 km
ATM Bank	6 min drive	2.0 km
Limassol shopping centre	8 min drive	2.2 km
MY MALL	12 min drive	6.1 km
City of Dreams Mediterranean	12 min drive	6.3 km
Old city	5 min drive	2.0 km
Limassol Marina	6 min drive	1.8 km



**LARNACA INT.  
AIRPORT**  
52 min drive  
70 km



**PAPHOS INT.  
AIRPORT**  
46 min drive  
58 km



# Project development vision







## PLATON TRIANGLE RESIDENCE

# Vision

---

*Platon Triangle aims to create a lifestyle that embodies luxury, comfort, and modern sophistication, catering to those who appreciate both high design and convenience in one of Limassol's most desirable locations.*

## FACILITIES

3 bedroom apartments | covered verandas | storages





Elevated Interiors  
Kitchen and Living room

Virtual tour 





Elevated Interiors  
Bedroom 1

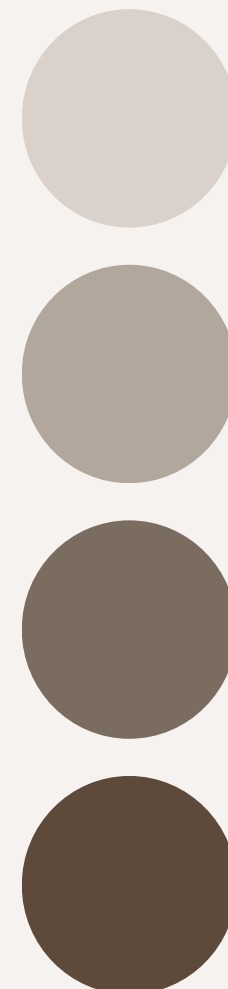
Virtual tour 360°





PLATON TRIANGLE  
RESIDENCE

PAGE 10



Elevated Interiors  
Bedroom 2

Virtual tour 360°





## Elevated Interiors Bedroom 3

Virtual tour 






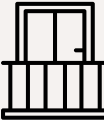




## Elevated Interiors Bathrooms



# Apartment details

		FLAT 101	FLAT 102	FLAT 103	FLAT 104
	TOTAL AREA	134 SQ.M	134 SQ.M	134 SQ.M	134 SQ.M
	BEDROOMS	3	3	3	3
	BATHROOM WC	3	3	3	3
	PARKING SPACE	1	1	1	1
	STORAGE	1	1	1	1
	COVERED VERANDAS	25.1 SQ.M	25.1 SQ.M	25.1 SQ.M	25.1 SQ.M

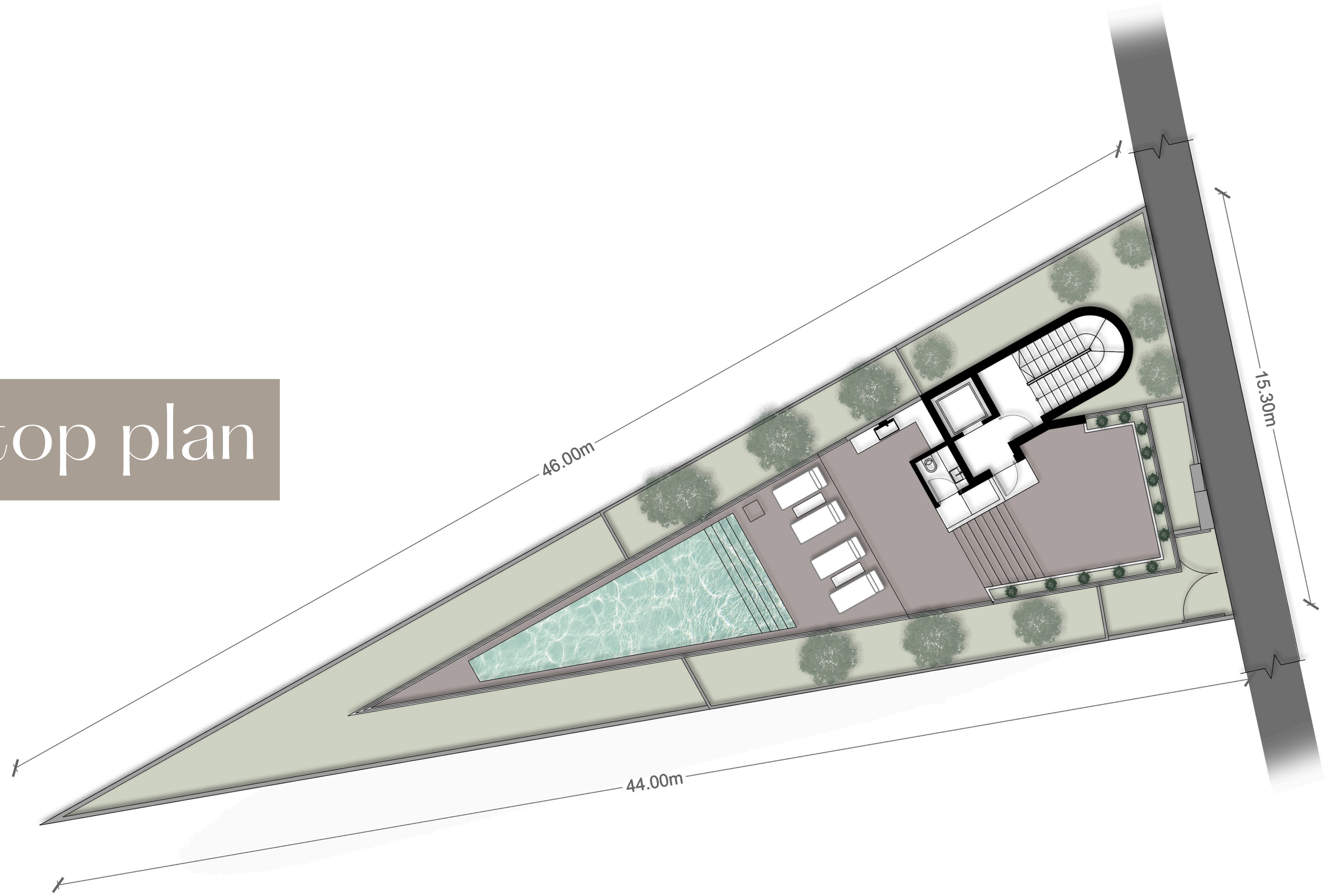


# Planning solution



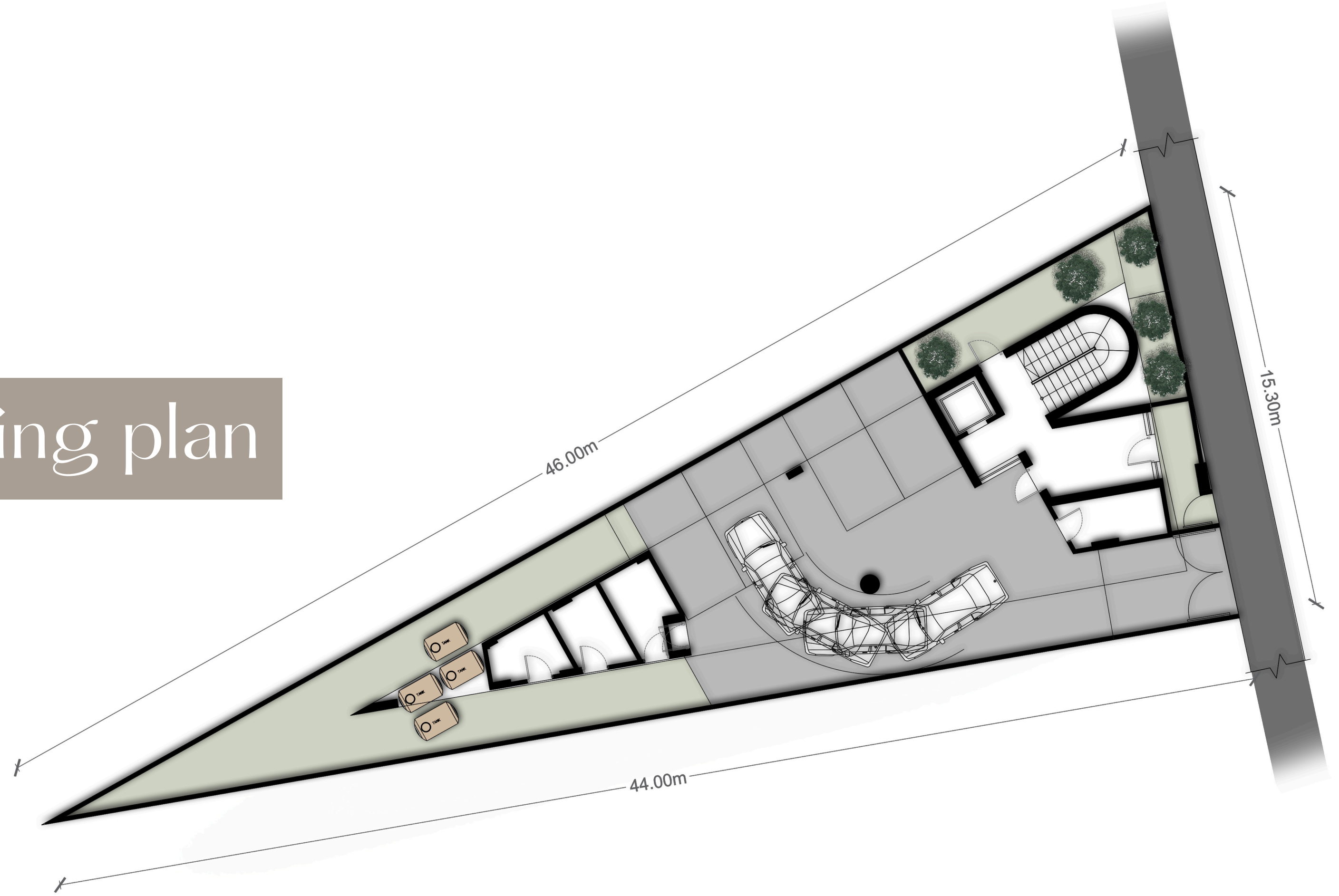


# Rooftop plan





# Parking plan







PLATON TRIANGLE  
RESIDENCE

# Contact Us

*For further information and detail*



+357 95 12 11 50



info@platonproperties.com



Limassol Marina Street, Limassol, Cyprus