

**MARCH**

# *Carmel Pointers*

**2025**



## **President's Corner – Vida Dietz**

Here at the end of February, it is beginning to look a lot like spring, but according to the calendar, spring begins March 20. The date doesn't matter as we will enjoy our fair weather and perhaps take advantage of what the outdoors offers us. Maybe a hike? Maybe a stop at the various craft shows, festivals, and special events around the area? Maybe a ride out to Kartchner Caverns or Bisbee? And maybe just a nice walk around the neighborhood. Whatever you do, enjoy yourselves and your surroundings.

Below are some items from Carmel Pointe's Rules & Regulations that I have been asked to remind everyone about:

---When parking at the curb, please be sure you and your guests' vehicles have all four tires on the asphalt. Parking on the curb can, over time, damage/crack the curb requiring costly repair.

---There is no overnight parking on the streets in Carmel Pointe. There is a 48-hour exception for RVs that are loading and unloading. There is also an exception when someone has a caregiver overnight as there is a need to keep the driveway clear in case emergency vehicles require access.

---The recycle bin can be placed at the curb the night before the scheduled collection day. However, the **trash** bin is to be placed at the curb **only** on the day of collection. This prevents the hungry and curious javelina that roam through here at night from tipping the bins over and rooting through your garbage which causes quite a mess.

And speaking of Waste Management and the trash/recycle collection, we have a list of their **official holidays** to share with you on the following page of this newsletter. It will be good to know what holidays will cause our scheduled collection day, Friday, to be **delayed until Saturday**. You can always access your account online and sign up for notifications from Waste Management. They will alert you in advance if there is a scheduled holiday delay. You can also find out whether the collection truck is on the way or if it has been delayed, etc. If you have not set up an online account or to see the available information, you can go to: <https://www.wm.com/us/en/user/login>

# 2025 WM Services

# Arizona

## SERVICE SCHEDULE

- Trash is collected weekly.
- Recycling is collected bi-weekly
- To confirm your collection day or recycling week, visit [wm.com](http://wm.com) and either login to My WM, or open the **Schedule & ETA** link at the top and input your address.

## HOLIDAY WEEK REMINDER

The week prior to each holiday (i.e., blue squares) customers can confirm their holiday week schedule at [wm.com](http://wm.com). No login needed - open the **Schedule & ETA** link at the top and enter your home address to confirm.

If your service day falls on or after a holiday being observed by your local WM collection team, your service that week will be delayed by one day. Regular service resumes the following week.

## WEATHER ALERTS

Check [wm.com/us/en/mywm/notifications](http://wm.com/us/en/mywm/notifications).



January 2025							February 2025							March 2025						
S	M	T	W	T	F	S	S	M	T	W	T	F	S	S	M	T	W	T	F	S
			1	2	3	4					1							1		
5	6	T	8	9	10	11	2	3	4	5	6	T	8	2	3	4	5	6	T	8
12	13	14	15	16	17	18	9	10	11	12	13	14	15	9	10	11	12	13	14	15
19	20	21	22	23	24	25	16	17	18	19	20	21	22	16	17	18	19	20	21	22
26	27	28	29	30	31		23	24	25	26	27	28		23	24	25	26	27	28	29
													30	31						

April 2025							May 2025							June 2025						
S	M	T	W	T	F	S	S	M	T	W	T	F	S	S	M	T	W	T	F	S
													1	2	3	4	5	6	7	
6	T	8	9	10	11	12	4	5	6	7	8	9	10	8	9	10	11	12	13	14
13	14	15	16	17	18	19	11	12	13	14	15	16	17	15	16	17	18	19	20	21
20	21	22	23	24	25	26	18	19	20	21	22	23	24	22	23	24	25	26	27	28
27	28	29	30				25	26	27	28	29	30	31	29	30					

July 2025							August 2025							September 2025						
S	M	T	W	T	F	S	S	M	T	W	T	F	S	S	M	T	W	T	F	S
													1	2	3	4	5	6		
6	T	8	9	10	11	12	3	4	5	6	7	8	9	7	8	9	10	11	12	13
13	14	15	16	17	18	19	10	11	12	13	14	15	16	14	15	16	17	18	19	20
20	21	22	23	24	25	26	17	18	19	20	21	22	23	21	22	23	24	25	26	27
27	28	29	30	31			24	25	26	27	28	29	30	28	29	30				

October 2025							November 2025							December 2025						
S	M	T	W	T	F	S	S	M	T	W	T	F	S	S	M	T	W	T	F	S
													1	2	3	4	5	6		
6	T	8	9	10	11	12	2	3	4	5	6	7	8	7	8	9	10	11	12	13
12	13	14	15	16	17	18	9	10	11	12	13	14	15	14	15	16	17	18	19	20
19	20	21	22	23	24	25	16	17	18	19	20	21	22	21	22	23	24	25	26	27
26	27	28	29	30	31		23	24	25	26	27	28	29	28	29	30				

## SERVICE GUIDELINES

- Place your WM recycling and trash carts at the curb by 7 a.m. – wheels facing the curb. Collection times may vary. Please leave carts out until serviced.
- Place carts at least 3 feet from other objects such as cars, mailboxes, trees and other carts.
- Ensure all material fits inside your carts with the lids fully closed. Be sure to break down cardboard boxes.
- Do not leave any materials next to or on top of your cart. Excess materials will not be collected.

## RECYCLE RIGHT

To learn more visit [wm.com/RecycleRight](http://wm.com/RecycleRight)



Metal Food & Beverage Cans

Plastic Bottles & Containers



Glass Bottles & Containers



Paper



Flattened Cardboard & Paperboard

## RECYCLE RIGHT TIPS

- Do not bag your recyclables. Place materials loosely and directly into carts.
- Never put foods or liquids in recycling.
- Break down cardboard boxes to conserve space inside recycling carts and ensure the cart lid is firmly closed.
- Items not accepted in recycling include plastic bags or film, foam cups/containers/packaging, yard waste, electronics, carpeting, clothing, furniture, tires or hazardous materials in recycling carts.

Always Working For A Sustainable Tomorrow®



## March 2025

- 3/19/25 – Monthly Site Review
- 3/3/25 – 3/7/25: Yellow Section and Red Weekly Areas
- 3/10/25 – 3/14/25: Blue Section and Red Weekly Areas
- 3/17/25 – 3/21/25: Green Section and Red Weekly Areas
- 3/24/25 – 3/28/25: Orange Section and Red Weekly Areas





## Community Food Bank—By Joy Goodsell

Carmel Pointe residents continue to support the needs of our community with their generous donations! We collected \$610.00 in donations for the month of February. We're awesome! We will walk on **Tuesday, March 4, 2025, beginning at 8:00 am.** Thanks,



## March Ladies Luncheon

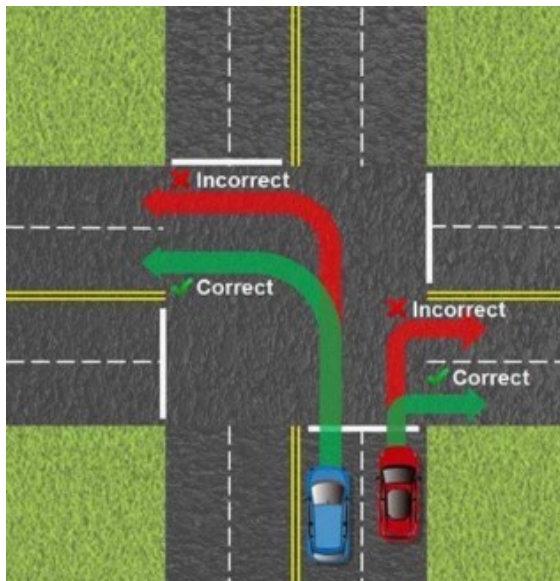


The next luncheon will be on Wednesday March 19th at the Cheesecake Factory in Tucson. **RSVP required by no later than Monday, March 16th.** See full details on the last page of this newsletter.

## OVPD News

This reminder from the February edition of OV's CrimeFighter Newsletter:

Arizona state law (A.R.S. 28-751) states that the driver of a vehicle making a turn shall turn into the nearest available lane. There are only two exceptions: First, if there is a hazard or obstruction in the first available lane, the driver may use the next available lane. Second, a driver may move across the roadway after turning if intending to turn into the first driveway or street on the opposite side. In either case, the movement must be completed safely.



Many of us have encountered this situation when leaving Carmel Pointe with the intention of turning right (south) on La Canada at the same time a northbound driver is attempting to make a U-turn at this intersection. Both drivers are required to turn into the lane nearest their turn, though as we know all too well, often they do not.

If you see a dangerous driver on the road, you can always call 911 to report it. If you have a non-urgent traffic concern that you would like addressed, you can call the Traffic Hotline at (520) 229-4933 or email [TC@orovalleyaz.gov](mailto:TC@orovalleyaz.gov).



### **EDITOR & PUBLISHER WANTED FOR CARMEL POINTERS**

If you have basic computer and writing skills and a desire to assist the community, please inquire about becoming the editor and publisher of this newsletter by contacting Joe Carpenter at (970) 309-0910 or Vida Dietz at (775) 771-0229. Initial training and assistance available as needed or desired.

If you have news or information that you would like to share for publication in Carmel Pointers, please submit it to Joe Carpenter at [planejock@earthlink.net](mailto:planejock@earthlink.net) at least 10 days prior to the month in which you want it to appear.

Looking for information from a past issue? You can find it on the "Assoc Documents" page of the website at [carmelpointehoa.com/](http://carmelpointehoa.com/)

For HOA management matters, please contact Vanessa Mixton-Garcia of Mission Management Services at [vanessa@missionmanagement.biz](mailto:vanessa@missionmanagement.biz)

For after hours emergencies, please call (520) 500-7757