



KEY INDUSTRIAL HOSE



WWW.KIHLLC.COM
SALES@KIHLLC.COM
©2023 KIH LLC. All Rights Reserved



INDEX

Keeping You Connected

KIH RWS 150	4
KIH ORANGE/CLEAR	5
KIH TANK TRUCK 150.	6
KIH OIL SERVICE & DISCHARGE CARGO.	7
KIH COMPOSITE 250.	8
KIH 700 SS METAL	9
KIH NITRILE 150 DISCHARGE.	10
KIH RED PVC DISCHARGE	11
KIH BLUE PVC DISCHARGE	12
KIH MILL	13
KIH TPU DISCHARGE.	14
KIH RUBBER DISCHARGE.	15
KIH CHEM	16
KIH BULL.	17
FITTINGS & ENDS.	18 - 23
ACCESSORIES	24 - 25
INFORMATIONAL	26 - BK



'A' Style vs. 'B' Style

'A' Style Fitting



Male



Female

'B' Style Fitting



Male



Female



Camlock - Standard 8



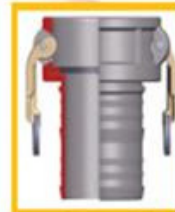
Type A

Male adapter x Female NPT



Type B

Female coupler x Male MPT



Type C

Female coupler x Hose shank



Type D

Female coupler x Female NPT



Type E

Male adapter x Hose shank



Type F

Male adapter x Male NPT



Type DC

Dust cap



Type DP

Dust plug



Keeping You Connected

KIH RWS 150

Application: Water suction and discharge in industrial and construction services.

Tube: Natural and Synthetic Rubber

Cover: Abrasion and weather resistant synthetic rubber

Temperature: -22°F to + 185°F

Reinforcement: High tensile synthetic textile and steel helix wire



Part #	ID In	OD in	WP psi	Burst psi	Bend Radius in
RWS20-150K	2	2.4	150	450	9
RWS30-150K	3	3.46	150	450	14
RWS40-150K	4	4.65	150	450	28
RWS60-150K	6	6.61	150	450	37
RWS80-150K	8	8.78	150	450	43
RWS100-150K	10	10.79	150	450	45
RWS120-150K	12	12.95	150	450	75

Standard Size	Camlock	Bauer
2" x 20'	RW20-150K-20-2020ACL	RW20-150K-20-2020SBU-U
3" x 20'	RW30-150K-20-3030ACL	RW30-150K-20-3030SBU-U
4" x 20'	RW40-150K-20-4040SCL	RW40-150K-20-4040SBU-U
6" x 20'	RW60-150K-20-6060SCL	RW60-150K-20-6060SBU-U
8" x 20'	RW80-150K-20-8080ACL	RW80-150K-20-8080SBU-U
10" x 20'	RW100-150K-20-100100ACL	RW100-150K-20-100100SBU-U-A
12" x 20'	RWS120-150K-20-120120ACL	RW120-150K-20-120120SBU-U-A



KIH ORANGE/CLEAR

Keeping You Connected



Application: Water suction and rental/construction pumping
Construction: Flexible PVC, rigid PVC helix, synthetic braiding, smooth bore, corrugated O.D.
Temperature: -13°F to + 140°F

Features:

- Lightweight and flexible
- External helix provides for easy drag
- Clear sidewall permits visual check of material flow

Part #	ID in	OD in	Weight lbs/ft	Std Length ft	WP psi	Vacuum Rating in/hg	Min Bend Radius in
OC20-1000	2	2.56	0.86	100	100	28	2.5
OC30-1000	3	3.7	1.24	100	100	28	6
OC40-500	4	4.74	2.15	100	50	28	7.5
OC60-500	6	6.95	3.36	20 or 100	50	28	10
OC80-500	8	9.13	5.71	20	50	28	16.5
OC120-300	12	13.66	10.3	20	30	25	45

Standard Size	Camlock	Bauer
2" x 20'	OC20-1000-20-2020ACL	OC20-1000-20-2020SBU-U
3" x 20'	OC30-1000-20-3030ACL	OC30-1000-20-3030SBU-U
4" x 20'	OC40-500-20-4040ACL	OC40-500-20-4040SBU-U
6" x 20'	OC60-500-20-6060ACL	OC60-500-20-6060SBU-U
8" x 20'	OC80-500-20-8080ACL	OC80-500-20-8080SBU-U
12" x 20'	OC120-500-20-120120ACL	OC120-500-20-120120SBU-U-A





KIH TANK TRUCK 150

Keeping You Connected



Application: For use on tank trucks, bulk petroleum stations and in-plant oil service

Tube: Oil resistant, black conductive Nitrile(NBR)

Reinforcement: Synthetic textile and steel helix steel wire

Cover: Black, abrasion, ozone, weather, heat and oil resistant neoprene rubber

Temperature: Suitable for use in the range -31°F to 180°F

Branding: KIH Tank Truck 150

Couplings: Contact KIH for coupling recommendation

Part #	ID in	OD in	WP psi	Weight lb/ft	Bend Radius in
TT20-150K	2	2.48	150	1.1	7
TT30-150K	3	3.5	150	1.86	9
TT40-150K	4	4.61	150	2.72	15
TT60-150K	6	6.69	150	5.21	26
TT80-150K	8	8.9	150	8.4	40

Standard Size	Camlock	Flange
2" x 20'	TT20-150K-20-2020ACL	TT20-150K-20-2020SFL
3" x 20'	TT30-150K-20-3030ACL	TT30-150K-20-3030SFL
4" x 20'	TT40-150K-20-4040ACL	TT40-150K-20-4040SFL
6" x 20'	TT60-150K-20-6060ACL	TT60-150K-20-6060SFL
8" x 20'	TT80-150K-20-8080ACL	TT60-150K-20-8080SFL





OIL SERVICES & DISCHARGE CARGO HOSE

Keeping You Connected



Application: For oil/water suction and delivery service

Tube: Oil and fuel resistant conductive nitrile (NBR)

Cover: Oil, weather and ozone resistant, wrapped cover, black synthetic rubber

Temperature: -40°F to +194°F

Reinforcement: Multiple high tensile synthetic tire cords (polyester cords) with steel wire helix

Lengths: 10' and 20' standard lengths

Couplings: Built-in pipe flanges fixed x floating

Features:

- Hose assemblies are hydro-tested and certified at the factory
- Tested following U.S.C.G. certification standards

Part #		ID	OD	WP	Bend Radius	Weight lbs	
10'	20'	in	in	psi	in	10'	20'
OSD40-250K-10-4040SFL	OSD40-250K-20-4040SFL	4	5 1/2	250	19	100	176
OSD60-250K-10-6060SFL	OSD60-250K-20-6060SFL	6	7 1/2	250	19	183	265
OSD80-250K-10-8080SFL	OSD80-250K-20-8080SFL	8	9 1/2	250	38	214	368
OSD100-250K-10-100100SFL	OSD100-250K-20-100100SFL	10	11 1/2	250	48	342	540
OSD120-250K-10-120120SFL	OSD120-250K-20-120120SF	12	13 3/4	250	48	503	732
OSD140-250K-10-140140SFL	OSD140-250K-20-140140SFL	14	15 3/4	205	68	573	845
OSD160-250K-10-160160SFL	OSD160-250K-20-160160SFL	16	17 3/4	250	78	765	1130
OSD180-250K-10-180180SFL	OSD180-250K-20-180180SFL	18	20	250	106	946	1408





KIH COMPOSITE 250

Keeping You Connected



Application: Suction and Discharge of Water, Gasoline, Diesel fuel, Paraffin, Kerosene, Lubricating Oils, 100% aromatics, black oils and heavy lubricants and solvents.

Carcass: Multiple layers of polypropylene fabric, film and polyester barrier layers

Reinforcement: High tensile strength galvanized inner and outer wire
Temperature: -22°F to +176°F (-30°C to +80°C)

Cover: Abrasion resistant PVC impregnated fabric

Part #		ID	Max WP	Burst	Bend Radius	Weight	Max Length
10'	20'	in	psi	psi	in	lb/ft	ft
C040-250B-10-4040SFL	C040-250B-20-4040SFL	4	250	850	16	3.5	65
C060-250B-10-6060SFL	C060-250B-20-6060SFL	6	250	850	23	7.7	65
C080-250B-10-8080SFL	C080-250B-20-8080SFL	8	250	850	32	12	65
C0100-250B-10-100100SFL	C0100-250B-20-100100SFL	10	250	850	40	16.9	40
C0120-250B-10-120120SFL	C0120-250B-20-120120SFL	12	250	850	47	19.8	40

Approximate Weight of Fix x Floating Flange

Size	Length	Weight	Length	Weight
in	ft	lbs	ft	lbs
4	10	71	20	99.2
6	10	160	20	233.69
8	10	265	20	381.4
10	10	365	20	507.06
12	10	550	20	760.01

Approximate Weight of Vic x Vic

Size	Length	Weight	Length	Weight
in	ft	lbs	ft	lbs
4	10	53	20	85.98
6	10	137	20	209.44
8	10	230	20	343.92
10	10	320	20	462.97
12	10	395	20	696.16





KIH 700 SS METAL HOSE

Keeping You Connected



Construction: SS 316L Corrugated Flexible Hose with SS 304 Double Wire Braiding

Couplings: TIG Welded with 150# SS 316 Fixed x Float Flanges w/ SS 316 Sch.40 Stub ends

Quality Certifications & Testing:

- Hydrostatic and Pneumatically tested.
- ISO14001:2004
- PED Certified

Part #		ID in	Nom id in	Nom od in	Static Bend Radius in	Dynamic Bend Radius in	Max WP PSI	Weight lbs	
10'	20'							10'	20'
BH20-870SS-10-2020SSFL	BH20-870SS-20-2020SSFL	2	1.98	2.77	5	15	867	44	76
BH30-526SS-10-3030SSFL	BH30-526SS-20-3030SSFL	3	3.15	3.99	9	22	526	61	103
BH40-464SS-10-4040SSFL	BH40-464SS-20-4040SSFL	4	4.36	5.06	10	24	455	98	163
BH60-319SS-10-6060SSFL	BH60-319SS-20-6060SSFL	6	5.93	7.12	18	31	312	163	277
BH80-275SS-10-8080SSFL	BH80-275SS-20-8080SSFL	8	7.76	9.29	19	37	270	251	421
BH100-174SS-10-100100SSFL	BH100-174SS-20-100100SSFL	10	9.86	11.45	25	51	174	267	423
BH120-151SS-10-120120SSFL	BH120-151SS-20-120120SSFL	12	11.82	13.5	31	61	151	353	553





KIH NITRILE 150 DISCHARGE HOSE

Keeping You Connected



- Tube:** Blend of synthetic elastomers, smooth, oil resistant, black
- Reinforcement:** Single high tensile textile braid
- Cover:** Blend of synthetic elastomers compound, ribbed finish
- Temperature:** Suitable range -4°F to 176°F
- Lengths:** 100 ft. standard lengths
(Longer lengths available on request)
- Colors:** Black, Orange, Red, or Yellow

Features:

- Designed as a dependable & durable, yet lightweight and flexible solution for high volume, high pressure water transfer applications.
- Suitable for use and recommended for industrial and agricultural applications in:
 - Dewatering operations
 - Irrigation
 - Sewage and general pumping applications
- This hose is constructed using an “**Extruded Thru the Weave**” (ETW manufacturing process)

Part #	Nom. ID in	Thickness in	WP psi	Burst psi	Tensile Strength lbs	Bend Radius ft	Weight lbs/ft
RC20-150K	2	0.08	150	450	8,250	3.60	0.30
RC30-150K	3	0.10	150	450	11,750	4.75	0.47
RC40-150K	4	0.10	150	450	17,400	5.60	0.70
RC60-150K	6	0.16	150	450	51,600	2	1.68
RC80-150K	8	0.13	150	450	51,950	9.85	1.85
RC100-150K	10	0.15	150	450	110,250	10	2.65
RC120-150K	12	0.16	150	450	101,400	11	3.42

Standard Size	Camlock	Bauer
2" x 50'	RC20-150K-50-2020ACL	RC20-150K-50-2020SBU-U
3" x 50'	RC30-150K-50-3030ACL	RC30-150K-50-3030SBU-U
4" x 50'	RC40-150K-50-4040ACL	RC40-150K-50-4040SBU-U
6" x 50'	RC60-150K-50-6060ACL	RC60-150K-50-6060SBU-U
8" x 50'	RC80-150K-50-8080ACL	RC80-150K-50-8080SBU-U
10" x 50'	RC100-150K-50-100100ACL	RC100-150K-50-100100SBU-U-A
12" x 50'	RC120-150K-50-120120ACL	RC120-150K-25-120120SBU-U-A



KIH RED PVC DISCHARGE HOSE

Keeping You Connected



Application: Use for agricultural, quarry, irrigation, mining construction and industrial applications

Tube & Cover: Premium Red PVC

Reinforcement: Two spiral plies and longitudinal silk cords

Temperature: -10°F to 150°F

Packaging: Cut and coupled to length

Couplings: Standard short shank aluminum, malleable or brass couplings, Steel Bauer

Part #	ID in	Approx. Wall Thickness in	WP psi	Weight lbs
PVC20-130R	2	0.08	130	0.28
PVC30-125R	3	0.095	125	0.54
PVC40-125R	4	0.100	125	0.67
PVC60-115R	6	0.105	115	1.25
PVC80-70R	8	0.105	70	1.48
PVC120-40R	12	0.105	40	2.43

Standard Size	Bauers	CxE
2" x 50'	PVC20-130R-50-2020SBU-U	PVC20-130R-50-2020ACL
3" x 50'	PVC30-125R-50-3030SBU-U	PVC30-125R-50-3030ACL
4" x 50'	PVC40-125R-50-4040SBU-U	PVC40-125R-50-4040ACL
6" x 50'	PVC60-115R-50-6060SBU-U	PVC60-115R-50-6060ACL





KIH BLUE PVC DISCHARGE HOSE

Keeping You Connected



Application: Use for light duty, general purpose agricultural, irrigation, and construction applications.

Tube & Cover: Blue PVC

Reinforcement: Polyester yarn

Temperature: -4°F to 150°F

Packaging: Cut and coupled to length

Part #	ID in	Approx. Wall Thickness in	WP psi	Weight lbs
PVC20-80B	2	0.06	80	0.23
PVC30-70B	3	0.063	70	0.4
PVC40-70B	4	0.063	70	0.52
PVC60-50B	6	0.071	50	0.85

Standard Size	MxF	CxE
2" x 50'	PVC20-80B-50-2020AWS	PVC20-80B-50-2020ACL
3" x 50'	PVC30-70B-50-3030AWS	PVC30-70B-50-3030ACL
4" x 50'	PVC40-70B-50-4040AWS	PVC40-70B-50-4040ACL
6" x 50'	PVC60-50B-50-6060AWS	PVC60-50B-50-6060ACL





KIH MILL HOSE

Keeping You Connected



Application: Medium pressure water discharge hose

Tube:SBR

Cover: 100 % Polyester

Temperature: -25°F to 185°F

Lengths: 50 ft. and 100 ft. stock lengths

Color:White

Couplings: Camlock or Water Shank or NST

Single Jacket

Part #	ID in	WP psi	Test Pressure psi	Weight lbs	Standard 50' Length Camlocks	Standard 50' Length Water Shanks
SJ15-150W	1.5	150	250	0.23	SJ15-150W-50-1515ACL	SJ15-150W-50-1515AWS
SJ20-150W	2	150	250	0.28	SJ20-150W-50-2020ACL	SJ20-150W-50-2020AWS
SJ25-150W	2.5	150	250	0.39	SJ25-150W-50-2525ACL	SJ25-150W-50-2525AWS
SJ30-150W	3	150	250	0.50	SJ30-150W-50-3030ACL	SJ30-150W-50-3030AWS
SJ40-150W	4	150	250	0.66	SJ40-150W-50-4040ACL	SJ40-150W-50-4040AWS

Double Jacket

Part #	ID in	WP psi	Test Pressure psi	Weight lbs	Standard 50' Length Camlocks	Standard 50' Length Water Shanks
DJ15-250W	1.5	250	600	0.26	DJ15-250W-50-1515ACL	DJ15-250W-50-1515AWS
DJ20-250W	2	250	600	0.33	DJ20-250W-50-2020ACL	DJ20-250W-50-2525AWS
DJ25-250W	2.5	250	600	0.45	DJ25-250W-50-2525ACL	DJ25-250W-50-2525AWS
DJ30-250W	3	250	600	0.607	DJ30-250W-50-3030ACL	DJ30-250W-50-3030AWS
DJ40-250W	4	250	600	0.849	DJ40-250W-50-4040ACL	DJ40-250W-50-4040AWS



KIH TPU DISCHARGE HOSE

Keeping You Connected



Application: Water transfer, Oilfield, Fracking
Tube & Cover: TPU, Smooth cover, extruded through the weave.
Reinforcement: Circular woven filament polyester yarn.
Temperature: -58°F to +176°F

Part #	ID		Wall Thickness		Service Pressure	Burst Pressure	Weight	
	in	mm	in	mm			in	psi
TPU60-150K	6	152	0.126	3.2	150	450	1.27	1.9
TPU80-200K	8	204	0.149	3.8	200	600	1.94	2.9
TPU100-200K	10	254	0.165	4.2	200	600	2.68	4
TPU120-150K	12	306	0.165	4.2	150	450	2.81	4.2





KIH RUBBER DISCHARGE HOSE

Keeping You Connected



Application: Water discharge applications for **CHILLER**/climate control, construction, industry, and agriculture.

Tube: Synthetic rubber

Cover: Weather and ozone resistant synthetic rubber

Reinforcement: High-tensile synthetic textile multiply

Temperature: -13° F to +158°F

Couplings: Contact KIH for proper fitting recommendation and coupling procedure.

Part #	ID in	OD in	WP psi	Min Burst psi	Weight lbs/ft	Length ft
RD40-150B	4	4.53	150	450	2.21	100
RD60-150B	6	6.50	150	450	3.07	100
RD80-150B	8	8.74	150	450	5.45	100
RD100-150B	10	10.63	150	450	6.29	100
RD120-150B	12	12.68	125	375	7.17	100





KIH CHEM HOSE

Keeping You Connected



Tube: Clear Ultra High Molecular Weight polyethylene
Cover: Green abrasion resistant green EPDM
Reinforcement: Multiple plies of high tensile textile with dual helix
Temperature: -40°F to +250°F

Part #	ID in	OD in	Piles	MBR in	Vacuum HG	WP psi	Weight lbs/ft
CH20-250G	2	2.56	2	8	29"	250	1.33
CH30-250G	3	3.61	2	16	29"	250	2.12
CH40-250G	4	4.65	2	24	29"	250	2.83
CH60-250G	6	6.89	2	40	29"	250	6.89



KIH BULL HOSE

Keeping You Connected



Application: Heavy Duty air hose for use in mines, construction and industrial applications where maximum service is required

Tube: Blend of SBR and NBR, black, smooth, suitable for water and air, resistant to oil mist

Cover: Blend of EPDM and SBR, yellow, smooth with cloth impression, weather, ozone and abrasion resistant

Reinforcement: Brass coated steel wire

Temperature: -22°F to +200°F

Part #	ID in	OD in	WP psi	BURST PRESSURE psi	BEND RADIUS	WEIGHT lbs/ft
WB20-600Y	2	2.6	600	2400	8	1.69
WB30-600Y	3	3.7	600	2400	15	3.02
WB40-600Y	4	4.8	600	2400	20	4.54





Male Bauer x Shank	
Size (in)	Part #
4	AH4040-SBUM-UBER
6	AH6060-SBUM-UBER
8	AH8080-SBUM-UBER
10A	AH100100-SBUM-A-UBER
12A	AH120120-SBUM-A-UBER



Female Bauer x Shank	
Size (in)	Part #
4	AH4040-SBUF-UBER
6	AH6060-SBUF-UBER
8	AH8080-SBUF-UBER
10A	AH100100-SBUF-A-UBER
12A	AH120120-SBUF-A-UBER



Male Bauer x Male NPT	
Size (in)	Part #
2	AD2020-SBUM-MNPT
3	AD3030-SBUM-MNPT
4	AD4040-SBUM-MNPT
6	AD6060-SBUM-MNPT
8	AD8080-SBUM-MNPT



Female Bauer x Male NPT	
Size (in)	Part #
2	AD2020-SBUF-MNPT
3	AD3030-SBUF-MNPT
4	AD4040-SBUF-MNPT
6	AD6060-SBUF-MNPT
8	AD8080-SBUF-MNPT



Male Bauer x Female NPT	
Size (in)	Part #
2	AD2020-SBUM-FNPT
3	AD3030-SBUM-FNPT
4	AD4040-SBUM-FNPT
6	AD6060-SBUM-FNPT
8	AD8080-SBUM-FNPT



Female Bauer x Female NPT	
Size (in)	Part #
2	AD2020-SBUF-FNPT
3	AD3030-SBUF-FNPT
4	AD4040-SBUF-FNPT
6	AD6060-SBUF-FNPT
8	AD8080-SBUF-FNPT



Male x Female Bauer 45°	
Size (in)	Part #
4	AD4040-SBUM-SBUF-45
6	AD6060-SBUM-SBUF-45
8	AD8080-SBUM-SBUF-45
12	AD120120-SBUM-SBUF-45-A



Male x Female Bauer 90°	
Size (in)	Part #
4	AD4040-SBUM-SBUF-90
6	AD6060-SBUM-SBUF-90
8	AD8080-SBUM-SBUF-90
12	AD120120-SBUM-SBUF-90-A



KIH BAUER



Galvanized Bauer Pipe

Size (in)	Part #
12	BP120-75G-10-120120SBU-A

Female Bauer x Flange



Size (in)	Part #
2	AD2020-SBUF-FL
3	AD3030-SBUF-FL
4	AD4040-SBUF-FL
6	AD6060-SBUF-FL
8	AD8080-SBUF-FL
10A	AD100100-SBUF-FL-A
12A	AD120120-SBUF-FL-A
12B	AD120120-SBUF-FL-B



Male Bauer x Flange

Size (in)	Part #
2	AD2020-SBUM-FL
3	AD3030-SBUM-FL
4	AD4040-SBUM-FL
6	AD6060-SBUM-FL
8	AD8080-SBUM-FL
10A	AD100100-SBUM-FL-A
12A	AD120120-SBUM-FL-A
12B	AD120120-SBUM-FL-B

Bauer Increaser



Size (in)	Part #
4"F x 6"M	AD4060-SBUF-SBUM
6"F x 8"M	AD6080-SBUF-SBUM



Bauer Reducer

Size (in)	Part #
6"F x 4"M	AD6040-SBUF-SBUM
8"F x 6"M	AD8060-SBUF-SBUM

Female Bauer Cap



Size (in)	Part #
4	AD40-SBUF-CAP
6	AD60-SBUF-CAP
8	AD80-SBUF-CAP



Male Bauer Plug

Size (in)	Part #
4	AD40-SBUM-PLUG
6	AD60-SBUM-PLUG
8	AD80-SBUM-PLUG

Male Bauer Strainer



Size (in)	Part #
4	AD4040-SBUM-STR
6	AD6060-SBUM-STR
8	AD8080-SBUM-STR



Bauer O-Ring

Size (in)	Part #
4	BU40-ORING
6	BU60-ORING
8	BU80-ORING
12a	BU120-ORING



WYE and TEE also available





KIH TEE FLOAT & STEPBOW



Tee Float Strainer		
Part #	Size(in)	Aprox. Weight(lbs)
AD4040-TFLOAT	4	40
AD6060-TFLOAT	6	52
AD8080-TFLOAT	8	72

- Made from DR17 HDPE pipe
- Protect equipment from floating debris.



Step Bow		
Part #	Size(in)	Aprox. Weight(lbs)
AD4040-SBU-STEP	4	28
AD6060-SBU-STEP	6	62
AD8080-SBU-STEP	8	72

- Made from galvanized steel or HDPE.
- For use in suction or discharge applications.



KIH CAMLOCKS

Available in 8" & 12" and SS as needed



Part A: Male Cam x Female NPT Aluminum	
Size (in)	Part #
2	AD2020-ACL-A
3	AD3030-ACL-A
4	AD4040-ACL-A
6	AD6060-ACL-A



Part B: Female Cam x Male NPT Aluminum	
Size (in)	Part #
2	AD2020ACL-B
3	AD3030ACL-B
4	AD4040ACL-B
6	AD6060ACL-B



Part C: Female Cam x Hose Barb Aluminum	
Size (in)	Part #
2	AD2020ACL-C
3	AD3030ACL-C
4	AD4040ACL-C
6	AD6060ACL-C
8	AD8080ACL-C



Part D: Female Cam x Female NPT Aluminum	
Size (in)	Part #
2	AD2020ACL-D
3	AD3030ACL-D
4	AD4040ACL-D
6	AD6060ACL-D



Part E: Male Cam x Hose Barb Aluminum	
Size (in)	Part #
2	AD2020ACL-E
3	AD3030ACL-E
4	AD4040ACL-E
6	AD6060ACL-E
8	AD8080ACL-E



Part F: Male Cam x Male NPT Aluminum	
Size (in)	Part #
2	AD2020ACL-F
3	AD3030ACL-F
4	AD4040ACL-F
6	AD6060ACL-F



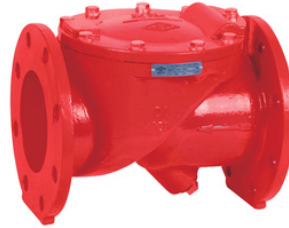
Dust Cap Aluminum	
Size (in)	Part #
2	AD2020ACL-DC
3	AD3030-ACL-DC
4	AD4040-ACL-DC
6	AD6060-ACL-DC



Dust Plug Aluminum	
Size (in)	Part #
2	AD2020ACL-DP
3	AD3030ACL-DP
4	AD4040ACL-DP
6	AD6060ACL-DP



KIH VALVES



Flapper Check Valve

Size (in)	Part #
4	CV40-FLAPPER
6	CV60-FLAPPER
8	CV80-FLAPPER
10	CV100-FLAPPER
12	CV120-FLAPPER

Flapper Check Valve Assemblies

Size (in)	Camlock	Bauer
4	AD4040-FLAPPER-CAM	AD4040-FLAPPER-BAUER
6	AD6060-FLAPPER-CAM	AD6060-FLAPPER-BAUER
8	AD8080-FLAPPER-CAM	AD8080-FLAPPER-BAUER
10	AD100100-FLAPPER-CAM	AD100100-FLAPPER-BAUER
12	AD120120-FLAPPER-CAM	AD120120-FLAPPER-BAUER



Knife Gate Valve

Size (in)	Part #
4	KG40-150FL
6	KG40-150FL
8	KG40-150FL
10	KG40-150FL
12	KG40-150FL



Flanged Gate Valve

Size (in)	Part #
4	GV40-150FL
6	GV60-150FL
8	GV80-150FL
10	GV100-150FL
12	GV120-150FL



Gate Valve Assemblies

Size (in)	Camlock	Bauer
4	AD4040-GATE-CAM	AD4040-GATE-BAUER
6	AD6060-GATE-CAM	AD6060-GATE-BAUER
8	AD8080-GATE-CAM	AD8080-GATE-BAUER
10	AD100100-GATE-CAM	AD100100-GATE-BAUER
12	AD120120-GATE-CAM	AD120120-GATE-BAUER





KIH FLANGE

TurnBack Flange

Size (in)	Part #
4	AH4040-STURNBACK
6	AH6060-STURNBACK
8	AH8080-STURNBACK
10	AH100100-STURNBACK
12	AH120120-STURNBACK



Flange KCN

Size (in)	Part #
4	AH4040-SFIXED-FLANGE
6	AH6060-SFIXED-FLANGE
8	AH8080-SFIXED-FLANGE
10	AH100100-SFIXED-FLANGE
12	AH120120-SFIXED-FLANGE

Lap Joint Flange

Size (in)	Part #
4	AD4040-SLJ-150
6	AD6060-SLJ-150
8	AD8080-SLJ-150
10	AD100100-SLJ-150
12	AD120120-SLJ-150



Flange Reducers

Size (in)	Part #
4x3	AD4030-FLFL
6x4	AD6040-FLFL
8x6	AD8060-FLFL
10x8	AD10080-FLFL
12x8	AD12080-FLFL
12x10	AD120100-FLFL

Flange TEE

Size (in)	Part #
2	AD2020-BIFL-T
3	AD3030-BIFL-T
4	AD4040-BIFL-T
6	AD6060-BIFL-T
8	AD8080-BIFL-T
10	AD100100-BIFL-T
12	AD120120-BIFL-T



Flange WYE

Size (in)	Part #
2	AD2020-BIFL-F
3	AD3030-BIFL-F
4	AD4040-BIFL-F
6	AD6060-BIFL-F
8	AD8080-BIFL-F
10	AD100100-BIFL-F
12	AD120120-BIFL-F

Butterfly Valve - Wafer Style

Size (in)	Part #
3	BV30-WAFER
4	BV40-WAFER
6	BV60-WAFER
8	BV80-WAFER
10	BV100-WAFER
12	BV120-WAFER



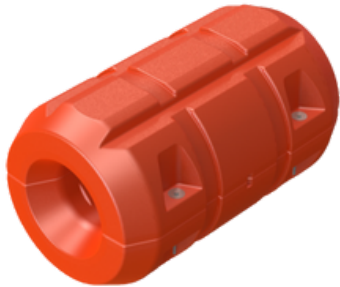
Butterfly Valve - Lug Style

Size (in)	Part #
3	BV30-LUG
4	BV40-LUG
6	BV60-LUG
8	BV80-LUG
10	BV100-LUG
12	BV120-LUG



KIH HOSE FLOAT, NUT BOLT & GASKET KITS

Keeping You Connected



Hose Floats	
Size (in)	Part #
4	AD4040-FLOAT
6	AD6060-FLOAT
8	AD8080-FLOAT
12	AD120120-FLOAT

- Made from rotationally-molded polyethylene plastic with UV inhibitors to prevent the float from degrading over time.
- Hose Floats include features that prevent pipeline slips, solution to many float transportation and storage woes & wind and water to easily pass.



Nut Bolt & Gasket Kit	
Size (in)	Part #
2	GA20-150-NBG
3	GA30-150-NBG
4	GA40-150-NBG
6	GA60-150-NBG
8	GA80-150-NBG
10	GA100-150-NBG
12	GA120-150-NBG

All Threads Nut & Gasket Kit	
Size (in)	Part #
2	GA20-150-ATNG
3	GA30-150-ATNG
4	GA40-150-ATNG
6	GA60-150-ATNG
8	GA80-150-ATNG
10	GA100-150-ATNG
12	GA120-150-ATNG



KIH PIPE RACKS, ACCESSORY CAGE & HOSE FLOATS

Keeping You Connected



Pipe Racks	
Part #	Size (in)
Pipe Rack 10	LG
Pipe Rack 20	XL

- Prevents pipe & coupling damage
- Saves valuable yard space
- Helps manage job site inventory
- Powder coat painted finish
- Heavy duty fork sleeves
- Can stack three high
- 6 x 6 stacking targets
- Removable posts
- Breaks down when not in use



Accessory Cage	
Part #	Size (in)
Fitting Cage	44 x 48 x 40

- Stackable cages
- Saves valuable warehouse space
- Helps manage inventory
- Painted finish in variety of colors
- Fold down door for easy access





Keeping You Connected

FORCE CHART

- For hose I.D.'s from 1-1/4" to 12" the force in pounds is greater than the PSI
- Force is the dynamic power which is exported longitudinally through a hose, towards the ends
- To arrive at the number of pounds of force exerted, you merely multiply the area of the I.D. times the working pressure being used
- Force = Area x Pressure

Force (In Pounds)

Hose I.D.	25 PSI	50 PSI	75 PSI	100 PSI	150 PSI	200 PSI	250 PSI	300 PSI	500 PSI	1000 PSI
2"	79	157	236	314	471	628	785	942	1,571	3,142
2-1/2"	123	245	368	491	736	982	1,227	1,473	2,454	4,909
3"	177	353	530	707	1,060	1,414	1,767	2,121	3,534	7,069
4"	314	628	942	1,257	1,885	2,513	3,142	3,770	6,283	12,566
5"	491	982	1,473	1,964	2,945	3,927	4,909	5,891	9,818	19,635
6"	707	1,414	2,121	2,827	4,241	5,655	7,069	8,482	14,137	28,274
8"	1,257	2,513	3,770	5,027	7,540	10,053	12,566	15,080	25,133	50,266
10"	1,964	3,927	5,891	7,854	11,781	15,708	19,635	23,652	39,270	78,540
12"	2,827	5,655	8,482	11,310	16,965	22,620	28,274	33,929	56,549	113,098





S.T.A.M.P.E.D

When fabricating and specifying hose assemblies ask the following questions:

Size: What is the I.D. (inside diameter) of the hose?

What is the O.D (outside diameter) of the hose?

Temperature: What is the temperature range of the media (product) that is flowing through the hose assembly?

Application: How is the hose assembly actually being used?

Is it a pressure application? Is it a vacuum (suction) application?

Material: What media/material that is flowing through the hose assembly?

Pressure: What is the maximum pressure including surges that this hose assembly will be subjected to?

Ends: What couplings have been requested?

Delivery: When is the hose required by?



Keeping You Connected

Scan to visit
www.KIHLLC.com



Scan to visit a
Digital Catalog



Connect with us:



334.417.0019

117 S. INDUSTRIAL BLVD
ENTERPRISE, AL 36330

SALES@KIHLLC.COM

©2023 KIH LLC. All Rights Reserved