

RC/REP/HARERA/GGM/501/233/2021/69 DATE:25/10/2021
Promoter: Aawam Residency Private Limited | Project: M3M Soulitude, Sector 89, Gurugram
www.haryanarera.gov.in

M3M Soulitude

LUXURY BOUTIQUE FLOORS

STEP INTO THE REALM OF
SOULFUL LIVING

Living the Soulful Way!

“Inner peace in harmony and being stressfree is the easiest type of existence!”

These words by Norman Vincent Peale can truly become your purpose and make you strive to enjoy a life that supports and sustains meaningful living that brings peace to your soul.

M3M Soulitude offers a holistic way of being, enveloping a unique lifestyle with endless possibilities to fulfill every desire of yours.

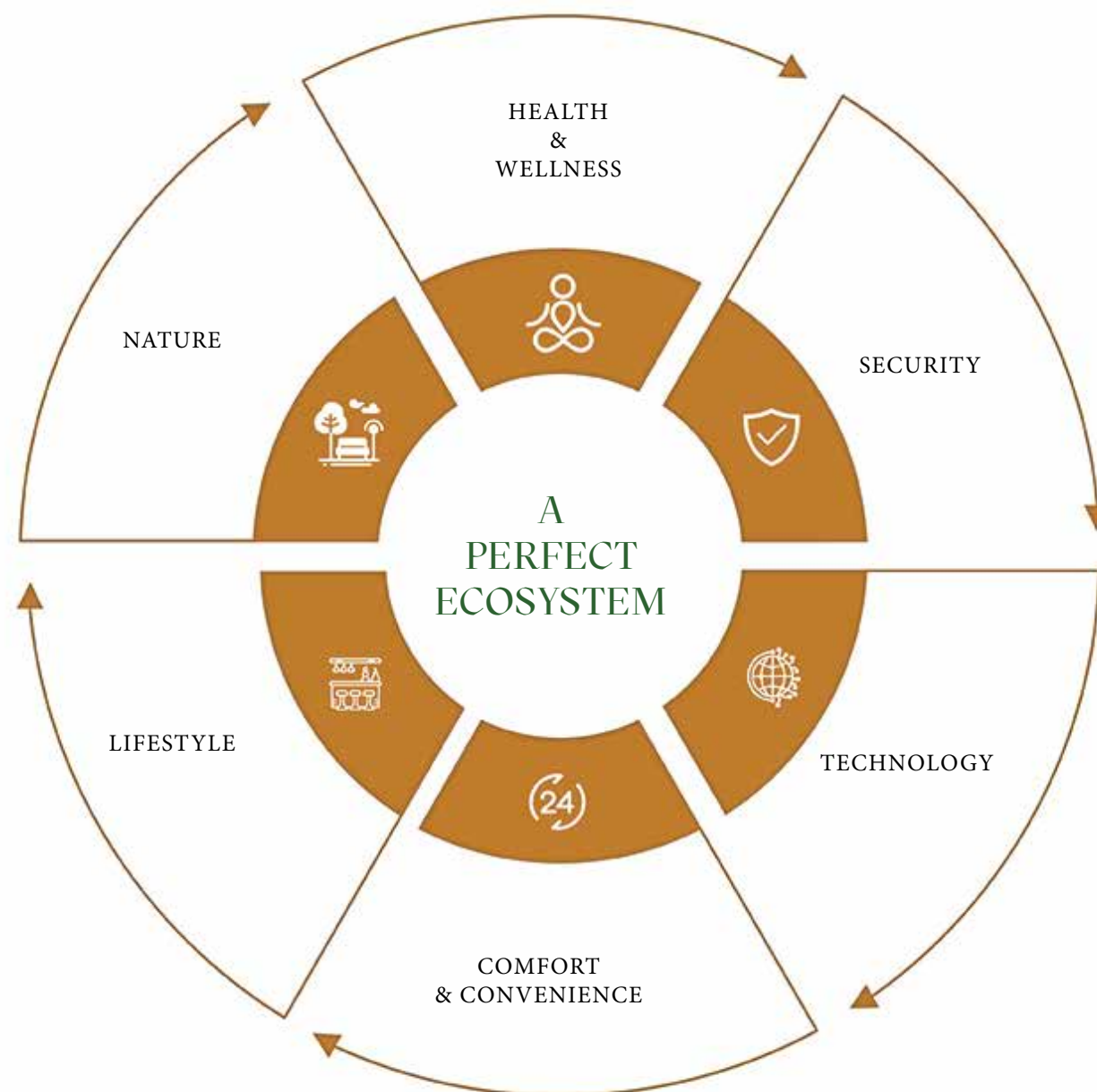
A dynamic environment that compliments your soul and connects you to a plethora of engaging activities. Live your every dream, and cherish peace and tranquility your heart pines for in this upcoming destination.



An Ecosystem Designed for a Wholesome Experience

The modern lifestyle is all about living independently and freely, carrying a vast array of interests, hobbies, and views of the world that they work and play in. Thus, we bring you a nest of endless possibilities with a community-friendly environment. Here, your every need will be taken care of, be it emotional, spiritual, or vocational. M3M Soulitude is an ecosystem where you can live spontaneously and cherish moments of togetherness with friends and family in a low-rise gated community. A space where you can embellish luxury in every corner, be it your luxury floor, a grand clubhouse, or multipurpose area.

Presenting you a vibrant community where you can manifest your every dream and desire for a wholesome living.



Building Life Changing Experiences Since a Decade

A name reckoned with delivering promises that shape your world, rekindles its commitment to provide alluring life spaces in the territories of New Gurugram. We have always been revolutionizing real estate with its Vision and Foresight. An industry leader in transforming every aspect of realty and carefully understanding the needs of the consumer. We create beautiful living spaces by masterfully building tasteful urban living options that are not only designed well but are also constructed with an underline of excellence, we come with unique designs and concepts each time we launch.



Experience a New Lifestyle at the Heart of New Gurugram

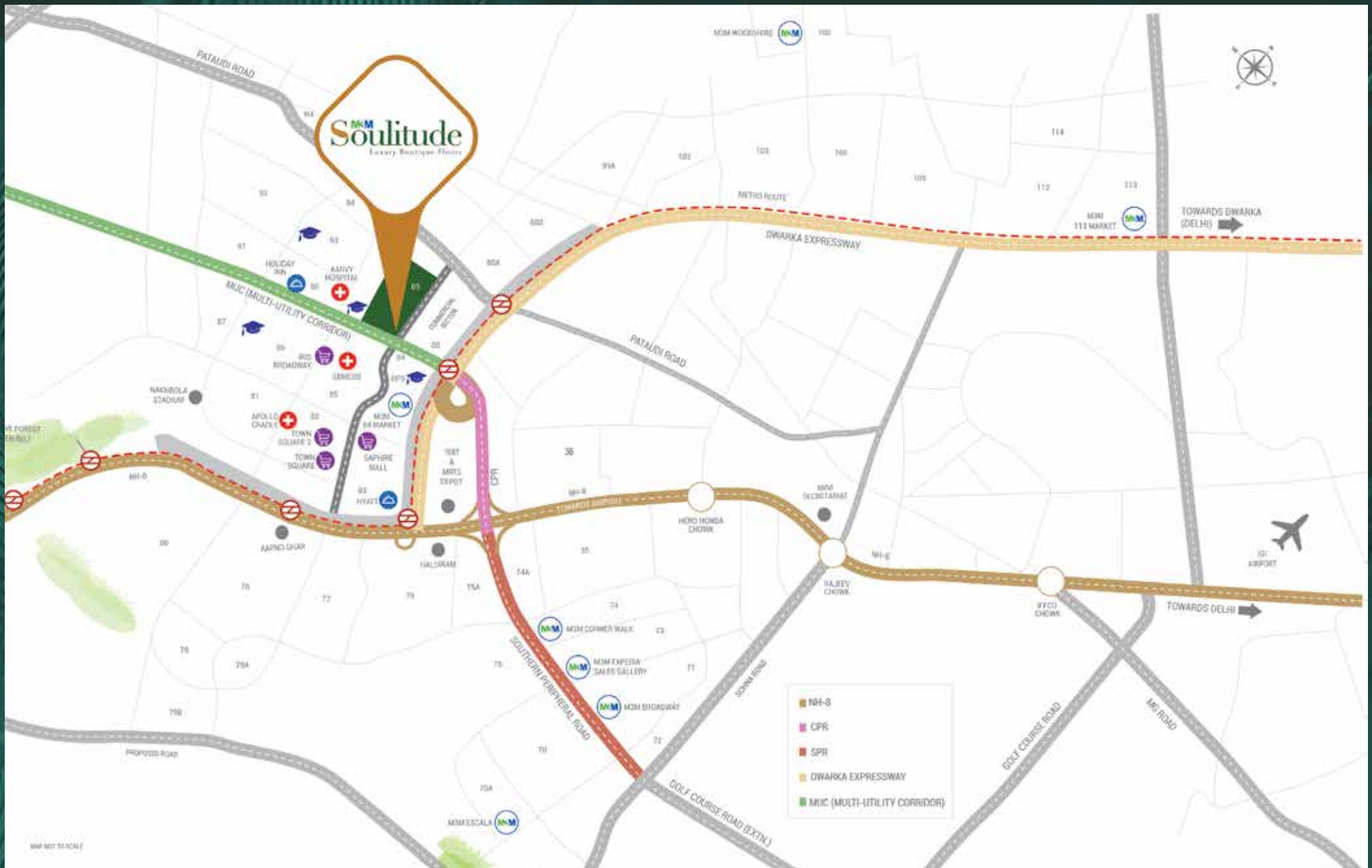
Rising in the heart of New Gurugram, a place that holds all the potential to be the next arena of the future. A destination that fulfills your every need and desire. Offering a lifestyle that will be an aspiration for others and a world that give you an experience like never before. Budding amidst a strong social infrastructure providing seamless connectivity to major highways and expressways. The place offers the most distinguished neighbourhood which comprises major corporates and high-street retail with wide and smooth roads, top-notch educational institutions, and world-class medical facilities.



— PRESENTING —

 **M3M** Soulitude
Luxury Boutique Floors

We bring you a vibrant community that offers a complete lifestyle to
keep up your spirits and experience soulful living.



Life at an Ideal Location

A truly soulful life is all about access and connectivity, which makes Sector 89 a great location. Big market influencers occupying retail and office spaces in the vicinity add to the broader culture of smart lifestyle living. Wide roads, retail chains, mega-marts, educational institutions, and bustling offices make New Gurugram, a rapidly developing area.



5 minutes away
from NH8



Proposed ISBT in the
vicinity



25 minutes away
from the Airport



Stronger connectivity
to Dwarka Expressway



2 minutes to
NPR



Proximity to good
educational institutes

Welcome to a World of Indulgence

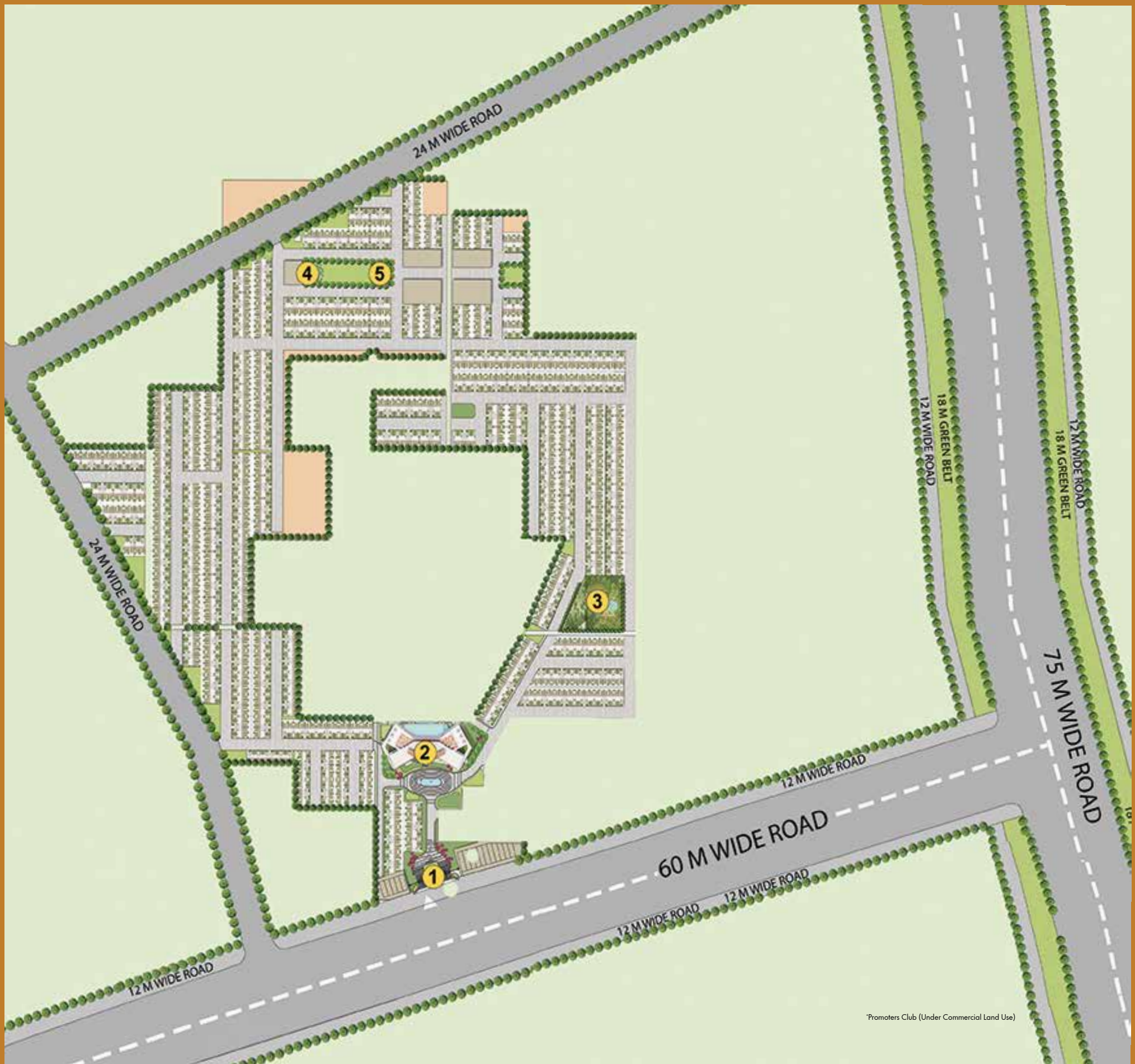
M3M Soulitude is exquisitely landscaped, providing a self-sufficient ecosystem that offers every urban comfort while distancing you from the chaos of city life. This project is a fine amalgamation of the luxuries of an independent floor and the amenities of a condominium. This one-of-its-kind concept is a brilliantly innovative approach that meets the new demands of an ever-evolving lifestyle.



A Perfect Site for Living

Experience an unmatched way of life, within four walls and out in the open with luxury boutique floors. A signature modern style and refreshing colour palette create lavish indoor spaces. Out of doors, green landscaping, planned walkways, serene water bodies, scenic parks, leisure and recreational facilities offer its residents contemporary living at its best in the heart of a thriving city. Designed to enhance community living with a touch of luxury, it has everything that says, "You are worth it."

The 60m wide road to ease traffic congestion and the 18m wide green belt to augment the environment are some of the basic but gregarious highlights of this region.



*Promoters Club (Under Commercial Land Use)

- 1 Grand Entrance
- 2 Club*
- 3 Party Lawn
- 4 Club Soul*
- 5 Multi-purpose Court

Step into a Soulful Life and Experience a Sense of Belonging

The innovatively conceptualised project necessitates urban living on revamped terms of privacy & opulence and has luxury boutique floors in varied sizes, created for advanced urban living for people who want to live happily in the comfort of luxury. With only four floors per building, the concept of “space” is truly redefined.

Prepare to be greeted by a memorable welcome at the iconic entrance and a plush lobby. This unique concept is inspired by the newly realised needs for expansive spaces along with the most modern architecture and amenities like customisable spaces to explore your creativity. M3M Soulitude conjures for you an enchanting ambience of calm and tranquility to create a lifestyle larger than life.





*ARTISTIC IMPRESSION

Delve into the Oasis of Soulful Living

Nothing spells luxury like cascading water bodies in the backdrop. Imbibe in the unique harmony inspired by an unparalleled lifestyle. Set aglow with the restful energy of orange skies and unwind yourself with the leisure of taking your own sweet time by the pool deck.



#ACTUAL IMAGE OF CONCEPT FLOOR

ADD A PAGE OF LUXURY TO YOUR LIFE

'My Space' Capture your Soul & Experiences

'My Space' is a unique offering that makes M3M Soulitude a distinctive choice of living that will be a reflection of your style, choices, and creativity. Explore your imagination and create your own dimension, be it a kids' area, library, meditation centre, or a personal movie theatre.



#ARTISTIC IMPRESSION

EXPERIENCE FICTION DIFFERENTLY WITH HOME THEATRE



*ACTUAL IMAGE OF CONCEPT FLOOR

YOUR WORK FROM HOME CORNER



*ACTUAL IMAGE OF CONCEPT FLOOR

THE TINY-TOTS HEAVEN



*ACTUAL IMAGE OF CONCEPT FLOOR

WHERE WORDS LEAVE OFF, MUSIC BEGINS

My Sky: A Truly Soulful Experience

M3M Soulitude brings forth a life that offers you beautiful sunrises and warm sunsets every single day. Along with dedicated floors, the horizons and the rains, all will be there for you to experience at your convenience. A beautiful expanse of space, right up to the clouds. Meditate in your privacy, enjoy a cup of tea or have a good time with your friends.





An Array of Soulful Experiences

M3M Soulitude offers a holistic way of being. A gated township that offers its residents a host of international standard amenities amidst an expansive landscape to lead a life full of joy, wonder and fulfillment.



Lifestyle

- Multi-cuisine Restaurant
- Lounge Bar & Café
- Terrace Bar & Lounge
- Mini Theatre
- Swimming Pool
- And Many More..



Comfort & Convenience

- Two-way Parking
- Elevators
- Power Backup
- Retail Area
- And Many More..



Health & Wellness

- Jogging Track Cycle
- Indoor Sports Area
- Badminton Courts
- Meditation Areas
- Yoga Zone
- Aerobics Room
- Zumba Room
- And Many More..



Technology

- Solar Street Lighting
- Solar Parking Shades
- BIM Based Facility Management
- Digital Lock
- And Many More..



Nature

- Green Landscaping
- Theme Based Garden
- Tree Shadowed Walkaway
- Cabanais in Landscapes
- Rain Garden
- And Many More..



Security

- Multi-tier Security
- Biometric Access
- Smart Visitor Monitoring System
- Gated Community
- And Many More..

Extravagant Clubhouse: A Soulful Experience

The leisure you desire is yours to experience at the clubhouse. At Club Soul, enjoy the finest contemporary lifestyle blessed with the timeless appeal of nature. Choose a pool for a refreshing swim or exercise your wits with a game of chess. Sit back and watch the latest blockbuster, or get your adrenaline pumping at the gym. The grand clubhouse has everything you wish for.



Enter a World that Captivates the Soul

The impressive facade and the grandeur of lobby are bound to impress your guests every time they visit you. Extending the promise of luxury, we ensure that your first impression on your guest remains an example of opulence.



Brimming Fun for Soul

Club Soul at M3M Soulitude has been planned to create an atmosphere of fun and opulence. The gleam and glam of interiors will lift your moods and shall provide you with memorable experiences, every time. The indoor pool and well-equipped gymnasium will delight your experience and usher you to your happy mind space.



CLUB AREA



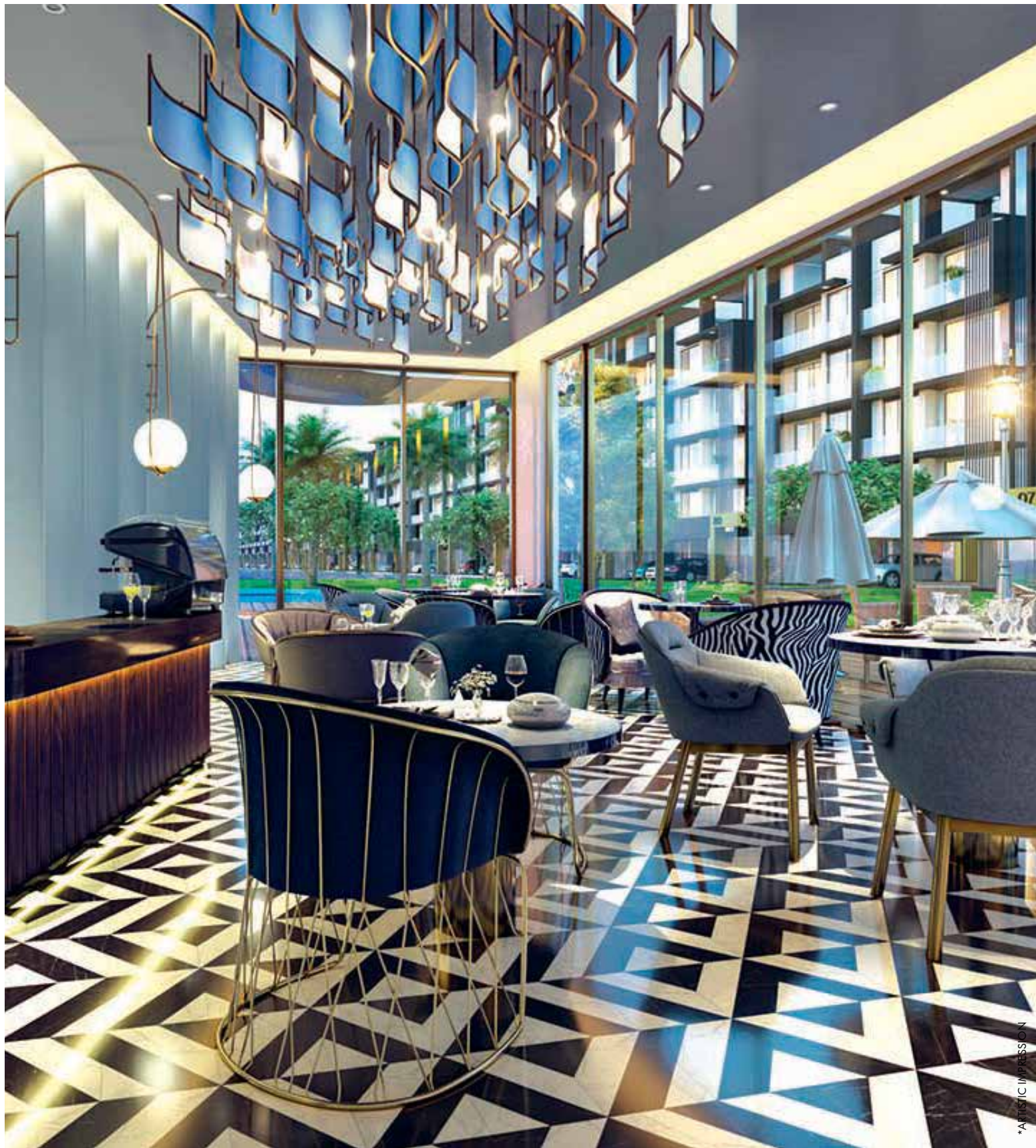
POOL



WELL-EQUIPPED GYM

Indulge in Extravagant Experiences

A lifestyle that offers every leisure for your mind and soul. With an array of amenities at your service, your living experience is amplified to another level.



TASTE BLISS IN EVERY NIBBLE

*ARTISTIC IMPRESSION



#ARTISTIC IMPRESSION

LOOK BETTER, FEEL BETTER



#ARTISTIC IMPRESSION

INDULGE IN PEACE AND COMFORT



A Lifestyle that Enriches your Soul

A healthy body is the most luxurious stay for a soul. The premises of M3M Soulitude have been planned to provide you with a healthier and active way of life. Apart from well-equipped gymnasiums, clubhouses and classy lounges, the area has defined jogging tracks, themed gardens and health zones to help you attain a balanced state of well-being and to make wellness an experience.



Soulful Living in Safe Environs

Top notch vigilance and gated community ensure complete safety and privacy to let your mind be at ease. Home automation systems, security guards, and CCTV surveillance heighten the joy and convenience of residing in M3M Soulitude.





#Unit Plan Type A

3 BHK+3T



#Unit Plan Type B

2 BHK+2T



Project Specification

	LIVING/ DINING	BEDROOM	KITCHEN	TOILETS	FRONT BALCONY	REAR BALCONY	STAIRCASE & LIFT LOBBY	BASEMENT	ROOF
FLOORING	International Stone Finish Tiles	"International Stone Finish Tiles / Laminated Wooden Flooring"	International Stone Finish Tiles	Anti-skid Tiles	Anti-skid Tiles	Anti-skid Tiles	Natural Stone / Tiles	Stone Finish Tiles	Tiles & Turf
WALLS	Gypsum Plaster with Acrylic Emulsion Paint (Assumption: MIVAN Formwork & Block Work)	Gypsum Plaster with Acrylic Emulsion Paint (Assumption: MIVAN Formwork & Block Work)	Combination of Tile and Acrylic Emulsion Paint	Stone Finish Tiles	Durable Exterior Grade Paint with Elevation Feature	Durable Exterior Grade Paint	Combination of Natural Stone / Tiles / Flat Oil Paint and OBD Paint (Assumption: MIVAN Formwork & Block Work)	Gypsum Plaster with Acrylic Emulsion / OBD Paint (Assumption: MIVAN Formwork & Block Work)	Durable Exterior Grade Paint
CEILING	Acrylic Emulsion Paint / OBD Paint	Acrylic Emulsion Paint / OBD Paint	Partially Moisture Resistant / Cement Board False Ceiling and Acrylic Emulsion Paint / OBD Paint	"Moisture Resistant / Cement Board False Ceiling and Acrylic Emulsion Paint / OBD Paint"	Durable Exterior Grade Paint	Durable Exterior Grade Paint	False Ceiling / Acrylic Emulsion Paint / OBD Paint	Acrylic Emulsion Paint / OBD Paint	
DOOR	"Entrance: Timber Flush Door/ Polish Veneered Flush Door"	Moulded Skin Door/ Laminated Flush Doors		Moulded Skin Door/ Laminated Flush Doors				Moulded Skin Door/ Laminated Flush Doors	
WINDOWS	Anodised/Powder Coated Aluminium Windows and Frames or UPVC	Anodised/ Powder Coated Aluminium Windows and Frames or UPVC	Anodised/ Powder Coated Aluminium Windows and Frames or UPVC	Anodised/ Powder Coated Aluminium Windows and Frames or UPVC	Anodised/ Powder Coated Aluminium Windows and Frames or UPVC	Anodised/ Powder Coated Aluminium Windows and Frames or UPVC	Anodised/ Powder Coated Aluminium Windows and Frames or UPVC		
FITTING & FIXTURES			Stainless Steel Sink and CP Fittings	High Quality Chinaware, CP Fittings	Modular Light Fixtures	Provision of Washing Machine			Provision of Tap for Gardening
OTHERS	"Provision of VRV/ VRF Technology with Heating and Cooling / Split AC"	"Provision of VRV/VRF Technology with Heating and Cooling / Split AC"	Natural Stone Counter	Natural Stone Counter	Seamless Glass Railing / Designer MS Railing with Paint / Louvers	Designer MS Railing with Paint	Designer MS Railing with Paint		

Disclaimer: "M3M Soulitude" is a part of DDJAY Residential Plotted Colony registered with Haryana Real Estate Regulatory Authority vide Regn. No. RC/REP/HARERA/GGM/500/232/2021/68, dated 25.10.2021 for the Plotted colony and regn. No. RC/REP/HARERA/GGM/501/233/2021/69, dated 25.10.2021 for the development of Independent Floor Residences, being developed on the part of licensed land admeasuring 27,292.28 sq. mtrs. situated in Sector-89, Gurugram, Haryana, by M/s. Aawam Residency Pvt. Ltd. under License bearing no. 32 dated 03.07.2021 granted in favor of Aawam Residency Pvt Ltd and Adhikaansh Realtors Pvt Ltd under Haryana Development & Regulation of Urban Areas Act, 1975 and the Rules 1976 for development of an Affordable Plotted Colony under Deen Dayal Jan Awas Yojna ("DDJAY"). | The use of word 'M3M/M3M Soulitude' shall in no manner be construed or interpreted as M3M India Pvt. Ltd. being the Promoter and / or Developer of the Project. The use of the word/ name/ mark 'M3M/ M3M Soulitude' is under the brand licensing arrangement with M3M India Private Limited. Contents of this advertisement are only for general information and not a legal offering. The specifications, dimensions, landscaping, services, facilities, & infrastructure etc. are illustrative & indicative and are subject to the change as per the approval from the respective authorities. Persons interested in investing in the project should make inquiries at the sales office of the Company. In the opinion of Company, the words / phrases used are generic terms. Nothing contained herein intends to constitute a legal offer and does not form part of any legally binding agreement. | Nothing contained herein shall construe as any scheme or deposit plan or investment advice/offer/proposal under the applicable law or any scheme under SEBI Act, 1992 and/or any other applicable law. | Dispute with regard to the interpretation of information will be subject to the exclusive jurisdiction of District Court at Gurugram and Hon'ble High Court of Punjab & Haryana at Chandigarh, India. | **Terms & Conditions apply. | 1 Hect. = 2.471Acres, 1 Acre = 4840 sq. yds. or 4046.86 sq. mtrs., 1 sq. mtr. = 10.764 sq.ft.

The images used in the brochure for reference are merely artistic conceptualization and do not replicate the exact product. Thus, they should not be relied upon as definitive and shall not be taken as reference for sale. Interior designing used is only for representation purposes. All furniture, fixtures, items, electronic goods, amenities, accessories are only for showcasing purposes and with the intent to help better understand the layout. Relationship between Company & actual customers will be governed strictly by the agreements to be executed from time to time.



AAWAM RESIDENCY PRIVATE LIMITED
(CIN: U70109HR2020PTC091883)
Registered Office
Unit No. SB/C/2/L/Office/017A,
M3M Urbana , Sector 67,
Gurugram-122102, Haryana, India

Sales Gallery
'The Experia' Golf Course Road (Extn.),
Sector 73, Gurugram 122004,
Haryana, India

CRM Cell
'M3M Cosmopolitan',
12th Floor, Golf Course Road (Extn.),
Sector 66, Gurugram 122002,
Haryana, India

Project Site
M3M Soulitude, Sector 89,
Gurugram 122505, Haryana, India