

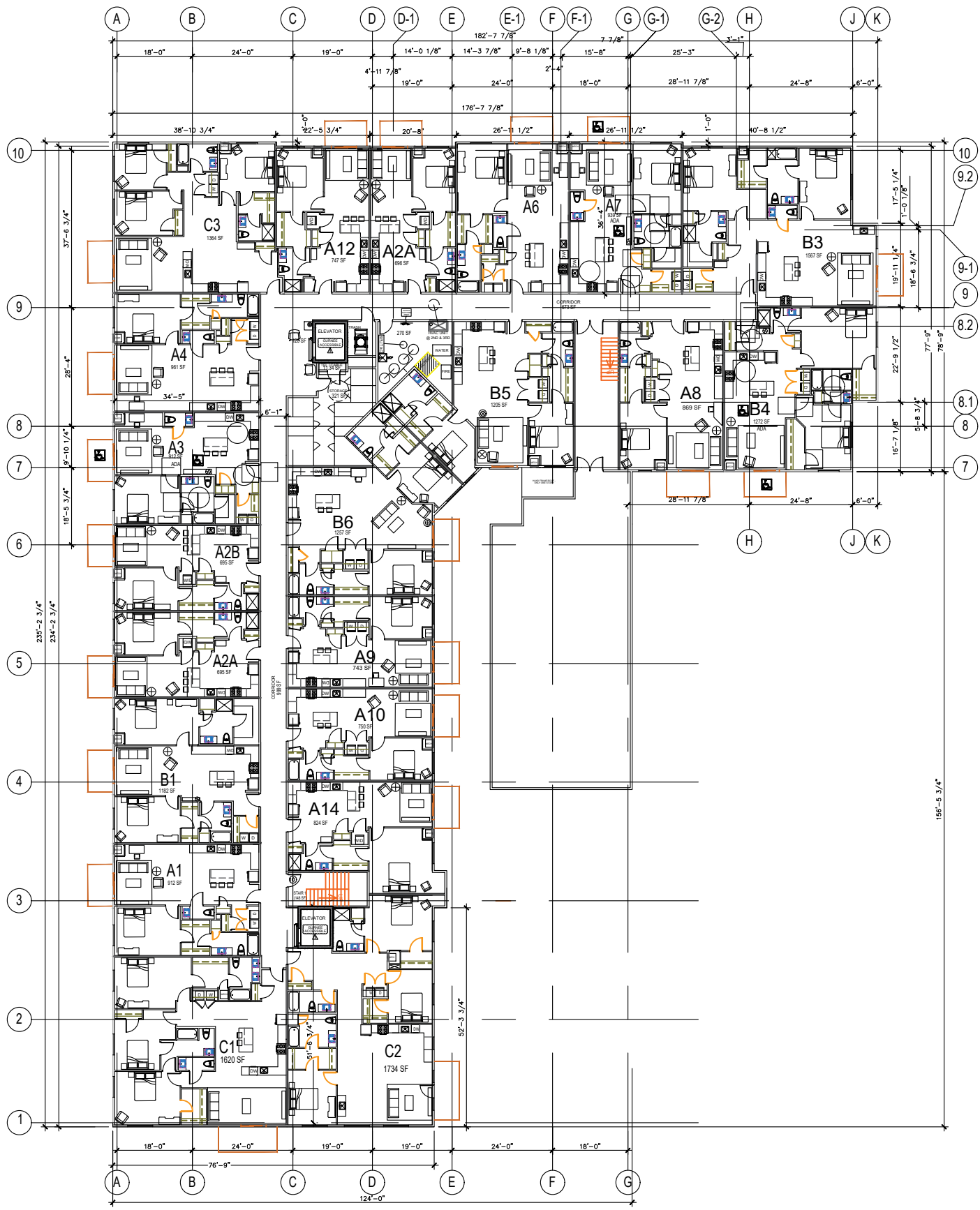
| NO. | ROOM NAME | FLOOR | MATERIAL | BASE | NORTH | EAST | SOUTH | WEST | CEILING | HEIGHT | NOTES |
|-----|------------------|-------|----------|------|-------|------|-------|------|----------|---------|-----------|
| A | UNIT ENTRY | LVT | WD | PT | PT | PT | PT | PT | GWB (PT) | 9'-0" ± | D |
| B | UNIT CLOSET | LVT | WD | PT | PT | PT | PT | PT | GWB (PT) | 9'-0" ± | D |
| C | UNIT KITCHEN | LVT | WD | PT | PT | PT | PT | PT | GWB (PT) | 9'-0" ± | D |
| D | UNIT LAUNDRY | LVT | WD | PT | PT | PT | PT | PT | GWB (PT) | 9'-0" ± | D |
| E | UNIT LIVING ROOM | LVT | WD | PT | PT | PT | PT | PT | GWB (PT) | 9'-0" ± | D |
| F | UNIT BEDROOM | CPT | WD | PT | PT | PT | PT | PT | GWB (PT) | 9'-0" ± | D |
| G | UNIT MECH. | CPT | WD | PT | PT | PT | PT | PT | GWB (PT) | 9'-0" ± | D |
| H | UNIT CLOSET | CPT | WD | PT | PT | PT | PT | PT | GWB (PT) | 9'-0" ± | D |
| I | UNIT BATHROOM | CT | WD | PT | PT | PT | PT | PT | GWB (PT) | 9'-0" ± | NOTE 2, D |
| J | UNIT POWDER ROOM | CT | WD | PT | PT | PT | PT | PT | GWB (PT) | 9'-0" ± | NOTE 2, D |
| 001 | VESTIBULE | CT | VB | PT | PT | PT | PT | PT | GWB (PT) | 9'-0" ± | |
| 002 | LOUNGE | CT | VB | PT | PT | PT | PT | PT | GWB (PT) | 9'-0" ± | |
| 003 | OFFICE | CPT | VB | PT | PT | PT | PT | PT | GWB (PT) | 9'-0" ± | |
| 100 | CORRIDOR | CPT | VB | PT | PT | PT | PT | PT | GWB (PT) | 9'-0" ± | |
| 101 | TRASH | VCT | VB | PT | PT | PT | PT | PT | GWB (PT) | 9'-0" ± | |
| 102 | STORAGE | VCT | VB | PT | PT | PT | PT | PT | GWB (PT) | 9'-0" ± | |
| 103 | FITNESS CORRIDOR | CPT | VB | PT | PT | PT | PT | PT | GWB (PT) | 9'-0" ± | |
| 104 | FITNESS ROOM | R | VB | PT | PT | PT | PT | PT | GWB (PT) | 9'-0" ± | |
| 105 | WOMEN'S ROOM | CT | VB | PT | PT | PT | PT | PT | GWB (PT) | 9'-0" ± | NOTE 1 |
| 106 | MEN'S ROOM | CT | VB | PT | PT | PT | PT | PT | GWB (PT) | 9'-0" ± | NOTE 1 |
| 107 | CLUB ROOM | CPT | VB | PT | PT | PT | PT | PT | GWB (PT) | 9'-0" ± | |
| 108 | STAIR CORRIDOR | CPT | VB | PT | PT | PT | PT | PT | GWB (PT) | 9'-0" ± | |
| 200 | CORRIDOR | CPT | VB | PT | PT | PT | PT | PT | GWB (PT) | 9'-0" ± | |
| 201 | TRASH | VCT | VB | PT | PT | PT | PT | PT | GWB (PT) | 9'-0" ± | |
| 202 | STORAGE | VCT | VB | PT | PT | PT | PT | PT | GWB (PT) | 9'-0" ± | |
| E1 | ELEVATOR | CPT | VB | PT | PT | PT | PT | PT | GWB (PT) | 9'-0" ± | |
| S1 | STAIR | CPT | VB | PT | PT | PT | PT | PT | GWB (PT) | 9'-0" ± | |
| S2 | STAIR | CPT | VB | PT | PT | PT | PT | PT | GWB (PT) | 9'-0" ± | |
| S3 | STAIR | CPT | VB | PT | PT | PT | PT | PT | GWB (PT) | 9'-0" ± | |

| APC | ACOUSTICAL PANEL CEILING | GWB | GYPSUM WALL BOARD | VB | VINYL BASE |
|-----|--------------------------|-----|--------------------|-----|------------------------|
| C | CONCRETE (SMALED) | LVT | LUXURY VINYL PLANK | VCT | VINYL COMPOSITION TILE |
| CPT | CARPET | PT | PAINT | WD | WOOD |
| CT | CERAMIC TILE | R | RUBBER | | |

ROOM FINISH SCHEDULE NOTES:
 1. AT PUBLIC TOILET ROOMS:
 FLOOR & BASE FINISHES SHALL HAVE A SMOOTH, HARD, NONABSORBENT SURFACE. THE INTERSECTIONS OF SUCH FLOORS WITH WALLS SHALL HAVE A SMOOTH, HARD, NONABSORBENT VERTICAL BASE THAT EXTENDS UPWARD ONTO THE WALLS NOT LESS THAN 4 INCHES. WALL FINISHES WITHIN 2 FEET OF THE WATER CLOSETS & URINALS SHALL HAVE A SMOOTH, HARD, NONABSORBENT SURFACE. TO A HEIGHT OF NOT LESS THAN 4 FEET ABOVE THE FLOOR AND THE MATERIALS USED SHALL BE OF A TYPE THAT IS NOT ADVERSELY AFFECTED BY MOISTURE.
 2. SHOWER COMPARTMENTS AND WALLS ABOVE BATHUBS WITH INSTALLED SHOWER HEADS SHALL BE FINISHED WITH A SMOOTH, NONABSORBENT SURFACE TO A HEIGHT NOT LESS THAN 12" ABOVE THE DRAIN OUTLET.

ROOM FINISH SCHEDULE GENERAL NOTES:
 A. ALL FINISHES TO BE SELECTED BY OWNER.
 B. ALL FLOOR FINISHES TO BE CLASS II (MINIMUM) IN ACCORDANCE WITH NFPA 223.
 C. ALL WALL & CEILING FINISHES TO BE CLASS C (MINIMUM) IN ACCORDANCE WITH ASTM 84 OR UL273.
 D. CEILING HEIGHT 11'-0" ON 4TH FLOOR UNITS C1 & C2.

| CLIMATE ZONE | BUILDING ENVELOPE FENESTRATION MAXIMUM U-FACTOR AND SHGC REQUIREMENTS | | | | | | | |
|-----------------------|---|-------|-------|-------|-------|-------|-------|-------|
| | 1 | 2 | 3 | 4 | 5 | 6 | 7 | 8 |
| | Vertical Fenestration | | | | | | | |
| U-FACTOR | | | | | | | | |
| Fixed Fenestration | 0.50 | 0.50 | 0.46 | 0.38 | 0.38 | 0.36 | 0.29 | 0.29 |
| Operable Fenestration | 0.65 | 0.65 | 0.60 | 0.45 | 0.45 | 0.43 | 0.37 | 0.37 |
| Entrance Doors | 1.10 | 0.83 | 0.77 | 0.77 | 0.77 | 0.77 | 0.77 | 0.77 |
| SHGC | | | | | | | | |
| Orientation | SEW N | SEW N | SEW N | SEW N | SEW N | SEW N | SEW N | SEW N |
| PF < 0.2 | 0.25 | 0.33 | 0.25 | 0.33 | 0.40 | 0.53 | 0.40 | 0.53 |
| 0.2 < PF < 0.5 | 0.30 | 0.37 | 0.30 | 0.37 | 0.48 | 0.58 | 0.48 | 0.56 |
| PF > 0.5 | 0.40 | 0.40 | 0.40 | 0.40 | 0.64 | 0.64 | 0.64 | 0.64 |



A. ALL WORK SHALL COMPLY WITH APPLICABLE FEDERAL, STATE AND LOCAL CODES.
 B. CONTRACTOR IS RESPONSIBLE FOR MEANS, METHODS, TECHNIQUES, SEQUENCING, COORDINATION AND SAFETY OF ALL PORTIONS OF WORK.
 C. PLUMBING, MECHANICAL, ELECTRICAL & FIRE PROTECTION DESIGN & STATE SUBMITTALS BY OTHERS ALL FLOOR NOTES MAY NOT BE CALLED OUT ON THIS SHEET - SEE OTHER PLAN SHEETS.
 D. ALL UNITS TO MEET ANSI 'TYPE A' UNITS CODE REQUIREMENTS EXCEPT WHERE ANSI 'TYPE A' UNITS CODE REQUIREMENTS ARE INDICATED.
 E. FLOOR PLAN WALL DIMENSIONS ARE TO STUDS.
 F. FLOOR/CEILING CONSTRUCTION:
 SEE 2/A/10
 - FIRST FLOOR SYSTEM: A
 - SECOND, THIRD & FOURTH FLOOR SYSTEM @ TRUSSES; B (EXCEPT FOR 2ND FLOOR SYSTEM ABOVE STAIR TO BE B)
 - SECOND FLOOR SYSTEM @ TRUSSES AT STAIR; B1
 - SECOND, THIRD & FOURTH FLOOR SYSTEM @ JOISTS; C
 - ROOM SYSTEM @ TRUSSES; D (EXCEPT FOR ROOF SYSTEM AT STAIR TO BE D)
 - ROOM SYSTEM @ TRUSSES AT STAIR; D1
 - ROOM SYSTEM @ JOISTS; E
 - PROVIDE MOISTURE RESISTANT GWB WHERE APPROPRIATE
 WALL CONSTRUCTION:
 SEE 2/A/10
 - EXTERIOR WALLS; 1E
 - CORRIDOR WALLS & BEARING WALLS; 1A (EXCEPT BEARING WALLS INSIDE UNITS & ELEVATOR BEARING WALLS TO BE TYPE 1B)
 - BEARING WALLS INSIDE UNITS & ELEVATOR BEARING WALLS; 1B
 - BETWEEN UNIT WALLS; 1C
 - STAIR & ELEVATOR WALLS; 2 @ BASEMENT 1D @ ALL OTHER FLRS
 - TRASH ROOM WALLS; 1D
 - TRASH CHUTE WALLS; 3
 - ALL OTHER WALLS; 1
 WALL GENERAL NOTES:
 - PROVIDE MOISTURE RESISTANT GWB WHERE APPROPRIATE
 - SEE FLOOR PLAN FOR WALL RATINGS (RATINGS NOT SHOWN ON ENLARGED UNITS)
 DOORS:
 EXTERIOR DOORS; 3'-0" x 6'-8" MIN. INSULATED DOORS, STYLE & FINISH AS SELECTED BY OWNER
 INTERIOR DOORS:
 - ALL PUBLIC, ALL UNIT ENTRY DOORS & ALL 'TYPE A' UNIT DOORS; 3'-0" x 6'-8" MIN. STYLE & MATERIAL AS SELECTED BY OWNER
 - ALL INTERIOR DOORS TO BEDROOMS, BATHS & WIC TO BE MIN. 2'-10" x 6'-5"
 - UNIT LAUNDRY DOUBLE DOORS TO BE PAIR OF 2'-4" MIN. DOORS
 RATING:
 - 45 MINUTE AT DOORS IN 1 HOUR RATED FIRE PARTITIONS
 - 90 MINUTE AT DOORS IN 2 HOUR RATED FIRE PARTITIONS
 * SEE OVERALL FLOOR PLANS FOR RATED LOCATIONS (RATINGS NOT SHOWN ON ENLARGED PLANS)
 HANDLES - ALL PUBLIC (INTERIOR & EXTERIOR), ALL UNIT ENTRY DOORS & ALL 'TYPE A' UNIT DOORS TO HAVE ADA LEVER TYPE LATCHSETS
 FUNCTIONS/LATCHSET
 - SINGLE USE PUBLIC TOILET ROOMS TO HAVE PRIVACY FUNCTION LATCHSET
 - MECHANICAL ROOMS TO BE LOCKING
 - ALL DOORS IN RATED FIRE PARTITIONS TO BE SELF CLOSING
 - ANY DUAL LOCKING MECHANISMS TO BE SINGLE ACTION RELEASE
 - ALL OTHER DOOR FUNCTIONS PER OWNER. STYLE & FINISH AS SELECTED BY OWNER
 DOOR GENERAL NOTES
 - ALL O.H. DOORS TO BE INSULATED
 SEE 6/A/1 FOR REQUIRED SAFETY GLAZING LOCATIONS
 PROVIDE IN-WALL BLOCKING AT ALL GRAB BAR / TOILET ACCESSORY LOCATIONS AT PUBLIC TOILET ROOMS & AT ALL UNITS PROVIDE IN-WALL BLOCKING FOR POSSIBLE FUTURE GRAB BARS (AT TOILETS & SHOWER/TUBS - TYP)
 N. ALL TOILET ROOM FIXTURES & ACCESSORIES MOUNTED PER 'ADA' REQUIREMENTS AT PUBLIC TOILETS. SEE DETAILS ON SHEET A1.1
 P. MAX FLOOR TRANSITIONS AT ALL --- PUBLIC AREAS & 'TYPE A' UNITS
 Q. PROVIDE TOOLED FLOOR CONTROL JOINTS - MAXIMUM AREA BETWEEN CONTROL JOINTS NOT TO EXCEED 150 SF
 R. WINDOW MATERIAL & FINISH AS SELECTED BY OWNER
 S. ANY ADDITIONAL INTERIOR FINISHES TO BE SELECTED BY OWNER
 T. OWNER TO PROVIDE RECYCLING CONTAINER IN BASEMENT
 U. SEE ROOM FINISH SCHEDULE FOR INTERIOR FINISH INFORMATION

| REVISIONS |
|----------------|
| 1 - 11/17/2021 |
| 2 - 12/23/2021 |

SHEET DESCRIPTION
Second Floor
 JOB NO.: 21270
 DATE: 10oct21
 DRAWN BY: MS/AB

A1.2.
 SHEET No.

Schofield, Wisconsin
 2nd FLOOR