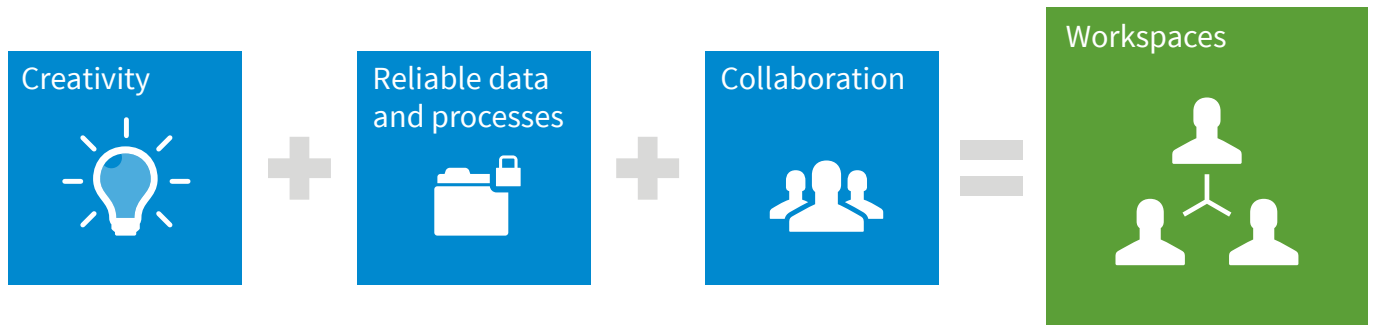


Engineering collaboration without boundaries

The easy way to organize, share and publish CAD data



Workspaces is CONTACT's completely new, open solution for CAD and multi-CAD data management. It permits the faster, synchronized cooperation of your self-organized development teams – among themselves and with partners and suppliers worldwide. And you make your data available automatically and reliably in your enterprise's PLM and ERP backbone.



Workspaces: a radical innovation to meet new challenges

Conventional PLM systems are not fundamentally designed to support development tasks that are very much characterized by work in progress. Team data management systems, on the other hand, are unable to provide multi-CAD support and the necessary process reliability. CONTACT Software developed its Workspaces solution on the basis of these two principles.

Overarching concept for development tasks

Workspaces is an overarching concept coupled with the corresponding architecture and technology for enterprise-wide use. This standard for development-driven CAD data management is characterized by uniform solutions for enterprises that employ one or more CAD systems and outstanding support for work-in-progress requirements and seamless integration in PLM backend processes.

Simplifying teamwork and reducing development times

Predefined requirements, specifications, existing solutions and installation spaces as geometrical contexts all go together to form the starting point for new products and technical changes. With Workspaces, you provide your users with the ideal environ-

ment in which to organize their CAD and Office data clearly and simply.

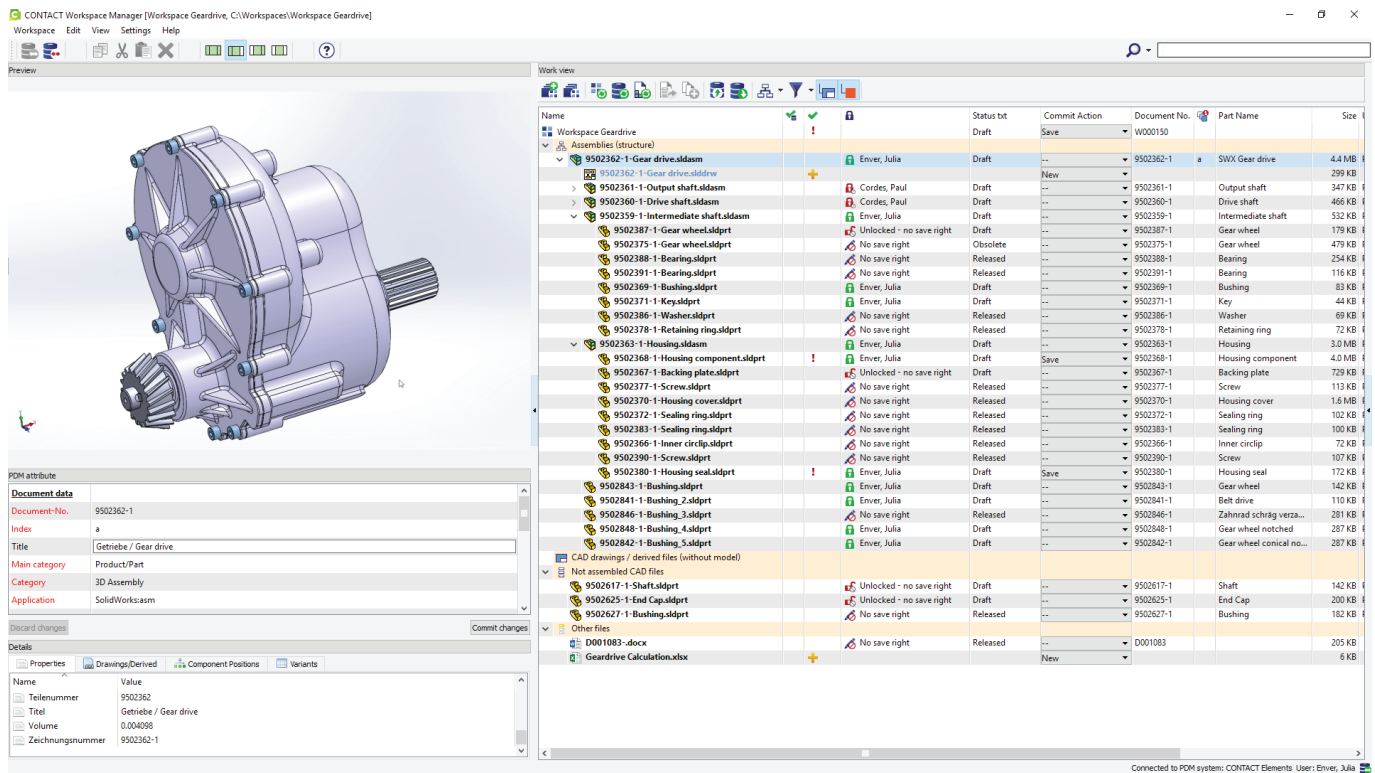
Work-in-progress: providing better support for shared development work

The challenge for your employees: coordination during development when they work together on modules and products but everyone has their own specific tasks. With shared workspaces, snapshots, online and offline modes and smart synchronization aids, Workspaces gives your developers the tools they need. The advantage: routine tasks demand less effort.

Achieving perfect interaction between CAD systems and data management

With Workspaces, you benefit from outstanding CAD and team data management for high-end CAD systems such as Dassault Catia and SolidWorks, Siemens NX and Solid Edge, Autodesk Inventor and PTC Creo. In this way, you profit from CONTACT's reputation as an independent, responsible partner for high-performance CAD environments. Cooperation with SolidLine, the leading supplier of SolidWorks solutions, is the perfect example of this. And if your company uses multiple CAD systems then you can take advantage of the benefits of multi-CAD data management.





The Workspace Manager Cockpit: direct access to the model structure and its components - information on editing locks, document attributes and preview

Integrating partners and suppliers seamlessly in workflows

Efficient collaboration, including with customers, partners and suppliers, is one of the greatest challenges facing companies today. Mountains of e-mails, uncontrolled copies and rigid procedures are only the tip of the iceberg of obstacles for projects and teams.

Containers simplify information logistics

Workspaces work better in conjunction with the Collaboration Portal: as smart content containers for the lightweight, digital synchronization of even complex CAD data and changes. Or together with the Workspace Manager for even more functionality. Or even to connect with your partner's PLM system. The underlying principle: the controlled, intelligent synchronization of the Workspaces containers and their content.

Passing on development results reliably to the enterprise processes

Good team data management facilitates collaboration during product development. This is what we mean by the concept "work in progress". It is equally important to supply results to other departments, processes and systems, such as ERP. Workspaces does this at the touch of a button. By passing on the model data not only automatically but also securely and to the right recipients depending on its status. And prepared – for

example using 3D Connect – in such a way that your users can easily work with the model data even independently of the CAD system.

Advantages for enterprises and employees

Advantages for engineers

- Optimum work organization
- Comprehensive support for work in progress
- Team synchronization with Shared Workspaces
- Container format for data synchronization with third parties
- Offline mode for mobile data management, at the customer's premises or on site.

Advantages for enterprises

- Outstanding multi-CAD support
- Smoother collaboration across sites and enterprise boundaries
- Reliable, end-to-end business processes
- Reduced lead times

***energizing
great minds***