

VACANT LAND FOR SALE

1035 Hwy 61, Ridgeville, SC 29472

FOR SALE



**COLDWELL BANKER
COMMERCIAL**

ATLANTIC

NEAL WALSH

Senior Broker

843.330.3787 | nwalsh@cbcatlantic.com

TREY DAVIS

Associate

803.468.7766 | tdavis@cbcatlantic.com

VACANT LAND FOR SALE

OFFERING SUMMARY



Located just minutes 10 minutes from Ridgeville, 5 minutes from Summers Corner, and 20 minutes from downtown Summerville, this 14.67 acre parcel is situated along scenic Highway 61 and offers a prime opportunity for a custom home builder seeking their next project. Zoned AR in rapidly growing Dorchester County, the property is surrounded by recent residential success, with adjacent subdivided lots selling quickly. This blank canvas offers over 500 feet of frontage and the potential to create an attractive private estate or thoughtfully planned small community. Nestled in a high-demand area known for its natural beauty and convenience access to local amenities make this a rare and valuable find offered at \$1,100,000.



PRICE

\$1,100,000



ACRES

14.67



ZONING

Zoned AR – Agricultural Residential District



TAX ID

1410000052000

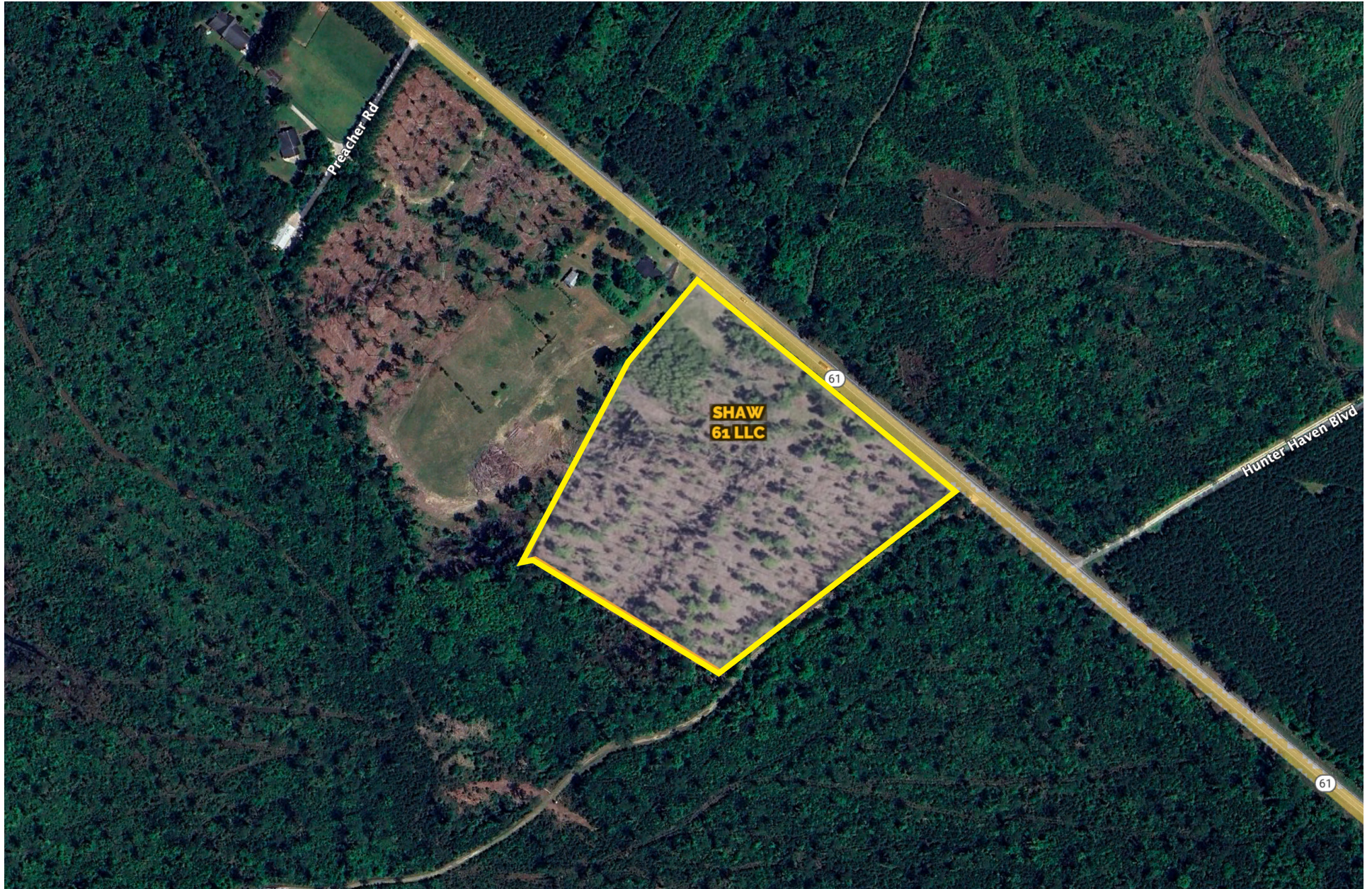


COUNTY

Dorchester County

VACANT LAND FOR SALE

WETLAND AERIAL



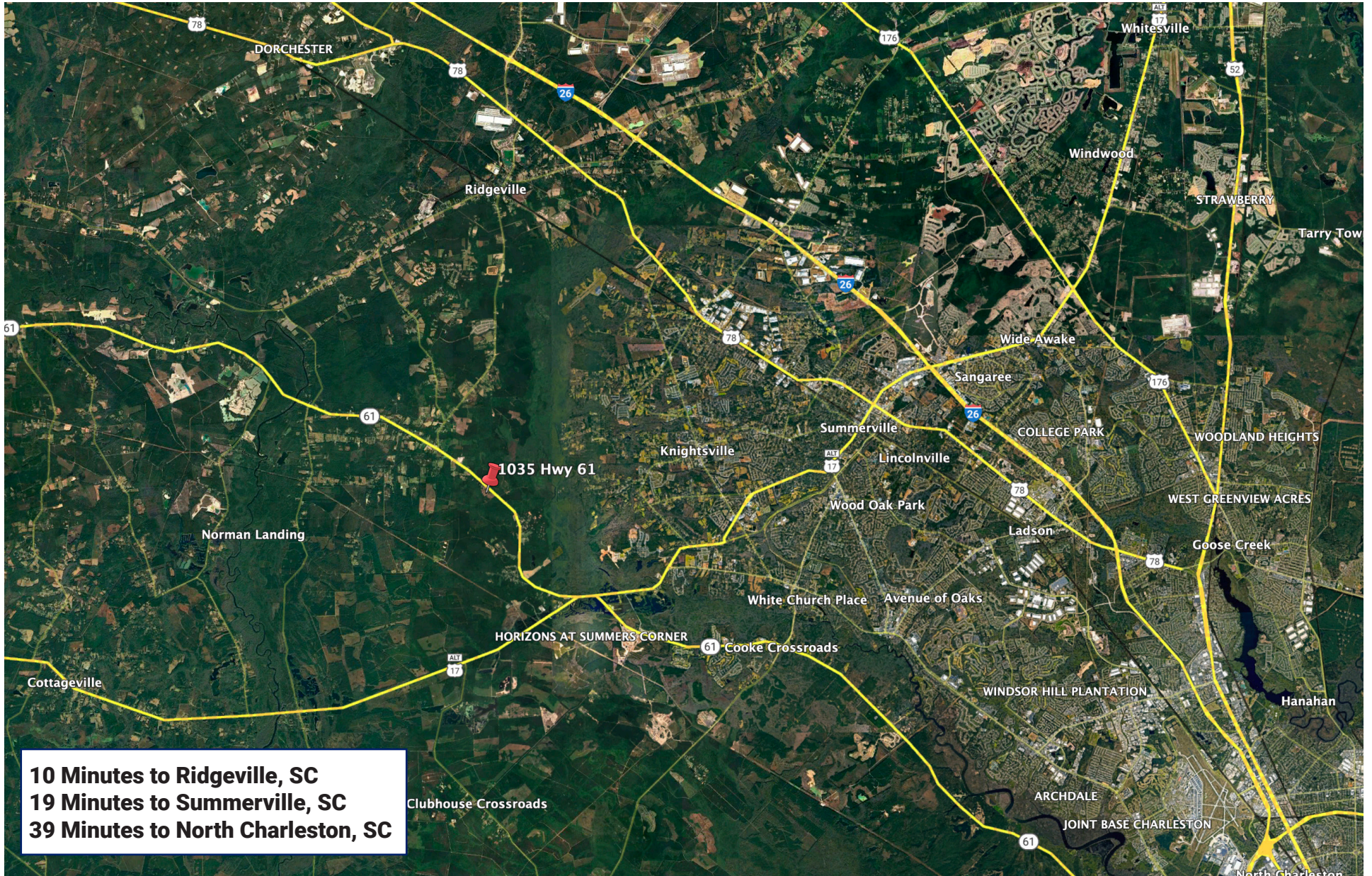
VACANT LAND FOR SALE

SOIL MAP

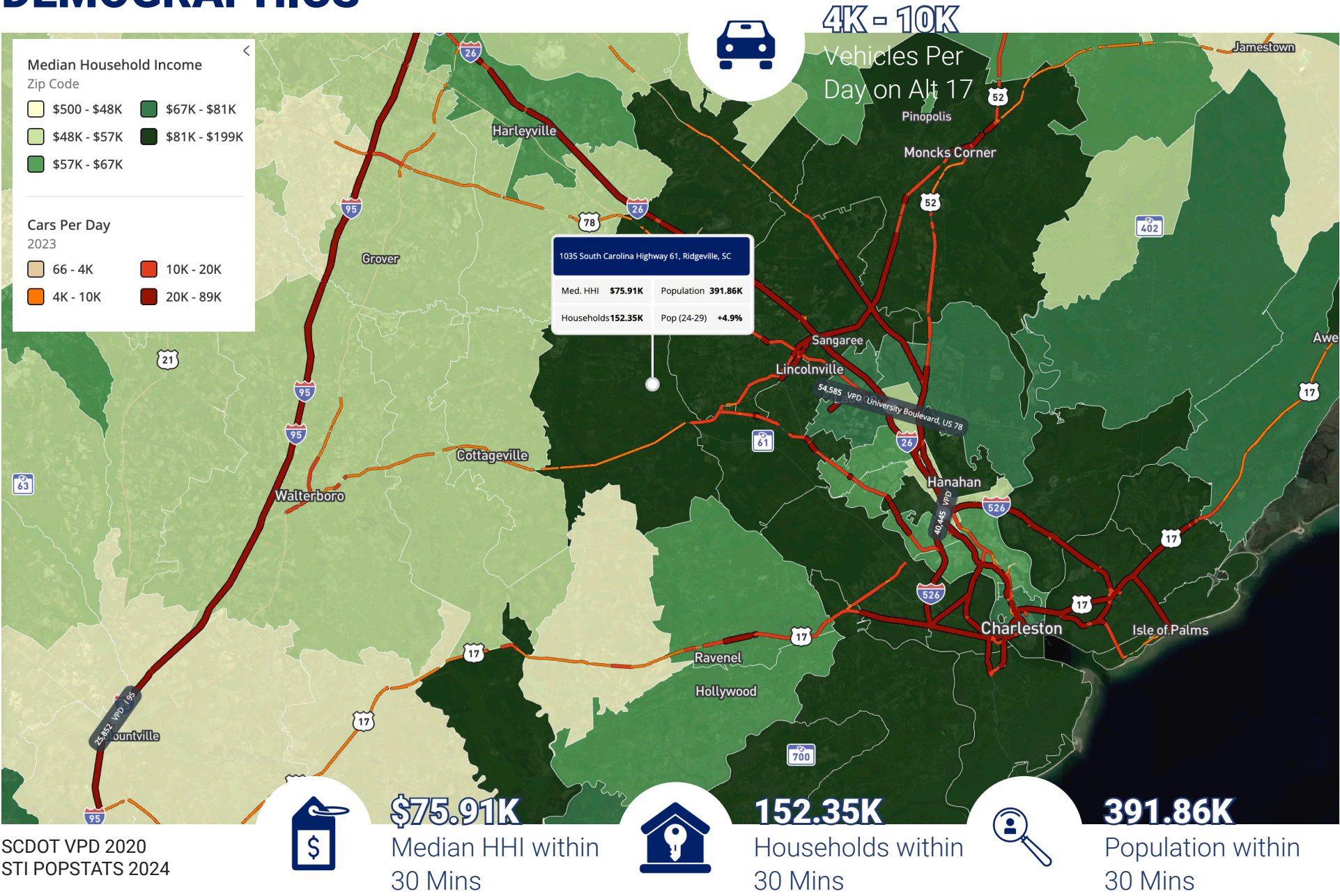


VACANT LAND FOR SALE

MARKET MAP



DEMOGRAPHICS





3506 W Montague Ave Suite 200
North Charleston, SC 29418
843.744.9877

cbcatlantic.com | cbcretailatlantic.com

This information has been obtained from sources believed reliable but has not been verified for accuracy or completeness. Coldwell Banker Commercial Atlantic makes no guarantee, representation or warranty and accepts no responsibility or liability as to the accuracy, completeness, or reliability of the information contained herein. You should conduct a careful, independent investigation of the property and verify all information. Any reliance on this information is solely at your own risk. The information contained herein should be considered confidential and remains the sole property of Coldwell Banker Commercial Atlantic at all times. Although every effort has been made to ensure accuracy, no liability will be accepted for any errors or omissions. Disclosure of any information contained herein is prohibited except with the express written permission of Coldwell Banker Commercial Atlantic.