

COMMONWEALTH OF KENTUCKY  
HART COUNTY, KENTUCKY  
ORDINANCE NO.: 110.4

**AN ORDINANCE PERTAINING TO THE REAPPORTIONMENT OF MAGISTERIAL DISTRICT BOUNDARIES LOCATED WITHIN HART COUNTY, KENTUCKY**

**WHEREAS**, constitutional and statutory provisions require the Fiscal Court and other legislative bodies located within the Commonwealth of Kentucky to reapportion representative districts and boundaries following the decennial census of the United States; and

**WHEREAS**, the Fiscal Court previously appointed three (3) citizen Commissioners to initiate reapportionment procedures in accordance with the provisions of KRS 67.045 (4) and the Fiscal Court of Hart County having previously received the report and recommendations of said Commissioners; and

**WHEREAS**, Hart Fiscal Court does wish to reapportion their magisterial districts in accordance with the guidelines and recommendations of the Reapportionment Commission and the Judgment of Hart Circuit Court in the case of Charles Wuertzer et al vs. Hart County Fiscal Court, Civil Action 01-CI-00265; and

**WHEREAS**, it appears that the above referenced Judgment of Hart Circuit Court is based on the 2000 federal census population of Hart County, Kentucky, as required by KRS 67.045 and that the Judgment of Hart Circuit Court requires that magisterial districts are to be compact, contiguous, and as nearly equal in population as is reasonably possible;

**NOW, THEREFORE**, be it **ORDAINED** as follows:

1. **THAT** there shall be five (5) magisterial districts serving Hart County, Kentucky which are hereby defined and described as follows:

A. Magisterial District 1-population 3,619, the description of which is set out in the attached map dated June 5, 2001 as recommended by the Hart County Reapportionment Committee, the boundaries and descriptions of which are hereby incorporated by reference as though fully set out herien.

B. Magisterial District 2-population 3,588, the description of which is set out in the attached map dated June 5, 2001 as recommended by the Hart County Reapportionment Committee, the boundaries and descriptions of which

are hereby incorporated by reference as though fully set out herien.

C. Magisterial District 3-population 3,564, the description of which is set out in the attached map dated June 5, 2001 as recommended by the Hart County Reapportionment Committee, the boundaries and descriptions of which are hereby incorporated by reference as though fully set out herien.

D. Magisterial District 4-population 3,282, the description of which is set out in the attached map dated June 5, 2001 as recommended by the Hart County Reapportionment Committee, the boundaries and descriptions of which are hereby incorporated by reference as though fully set out herien.

E. Magisterial District 5-population 3,392, the description of which is set out in the attached map dated June 5, 2001 as recommended by the Hart County Reapportionment Committee, the boundaries and descriptions of which are hereby incorporated by reference as though fully set out herien.

2. **THAT** it is further resolved that the five (5) magisterial districts described herein are compact, contiguous, and as nearly equal in population as is reasonably possible and it is further in direct accordance with the Order and Judgment of Hart Circuit Court.

3. **THAT** any provisions of the previous 2001 Ordinance of Reapportionment in conflict with the provisions set out herein are hereby repealed.

4. **THAT** this Ordinance shall become effective as of the second reading approval and publication.

**APPROVED ON FIRST READING** the 21<sup>st</sup> day of December, 2001.

**APPROVED ON SECOND READING** the 28<sup>th</sup> day of December, 2001.

**HART FISCAL COURT**

BY:



Terry Shelton, County Judge Executive

ATTEST:









DONNA CENTERS  
FISCAL COURT CLERK

# HART COUNTY - KENTUCKY

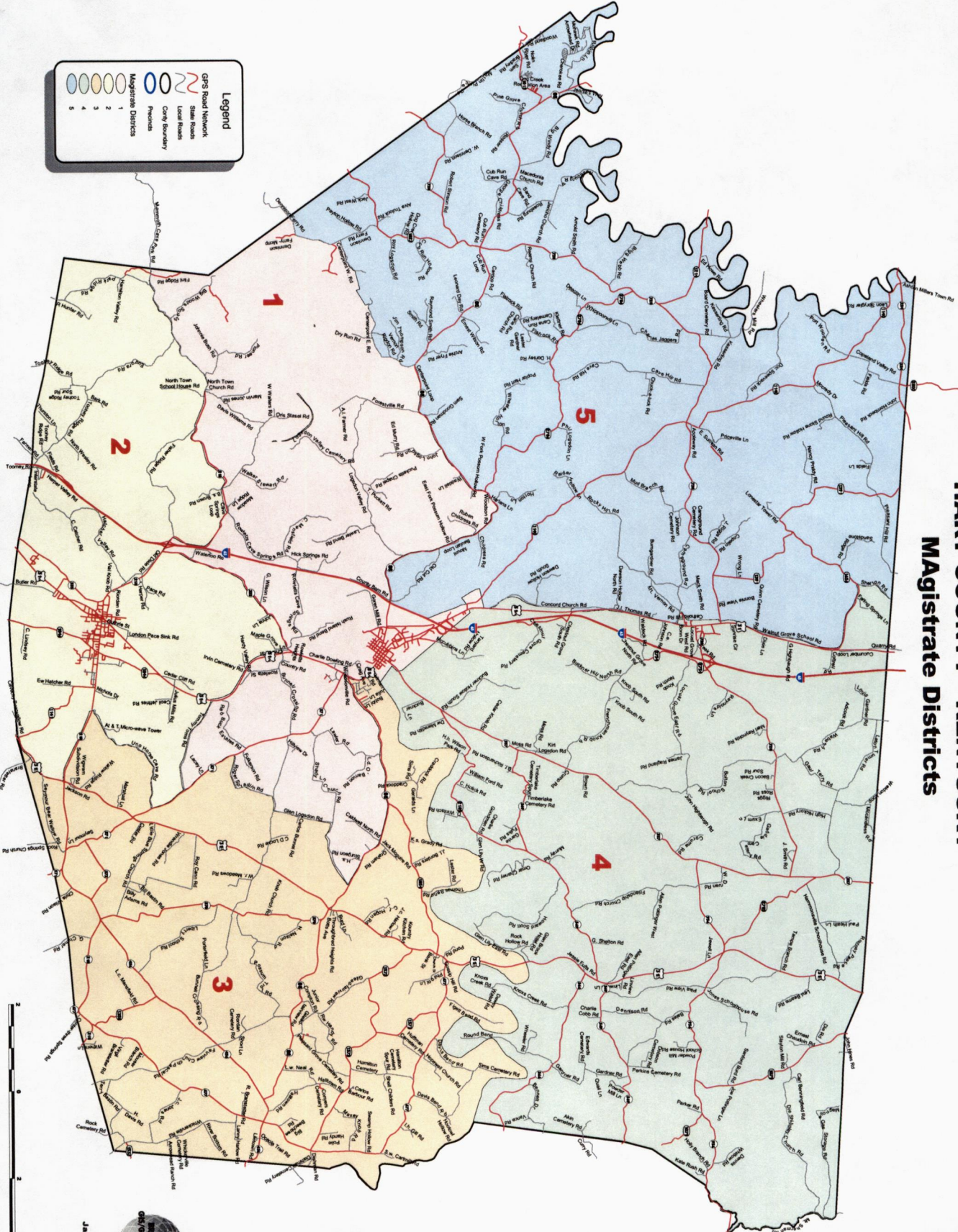
## Magistrate Districts

**Legend**

-  GPS Road Network
-  State Routes
-  Local Routes
-  County Boundary
-  Precincts
-  Magistrate Districts

Magistrate Districts

- 1
- 2
- 3
- 4
- 5



January 2002

