



Unit 4, five house farm, Sandon Road, Therfield, Royston SG8 9RE

PNEUMATIC
EXTERNAL SELF
RESETTING BUTTON
WITH SHROUD

REVISION:
1.5

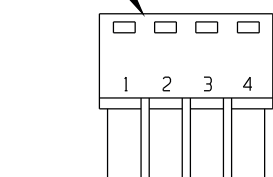
DRAWN.
AJL

DATE:
21/06/23

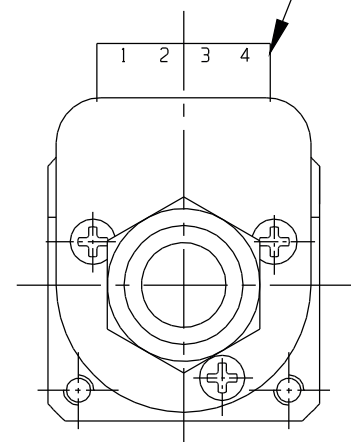
DRAWING NUMBER:
RPL-ESRBS

DATA SHEET SELF RESETTING PTE BUTTON (TERMINAL BLOCK)

PLUGABLE BLOCK



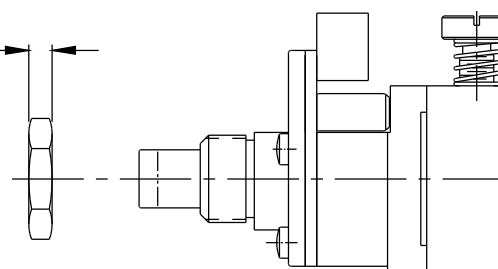
TERMINAL HEADER



ADJUSTMENT SCREW -
1 - 60 SECOND DELAY.

NOTE: (OVER TIGHTENING SCREW
MAY PREVENT RESETTING)

3.1MM
15/32ND THREAD



**1. TERMINAL PINS 2 & 3 NORMALLY OPEN
PINS 1 & 4 NORMALLY CLOSED.**

2. SWITCH: 5 AMP 12 VDC

**3. CONSTRUCTION: ANODIZED ALUMINIUM HOUSING;
PLATED STEEL PLUNGER; BRASS ADJ SCREW**

**4. TIMING REPEATABILITY TOLERANCE +10%
AT CONSTANT TEMPERATURE**