



Unit 4, five house farm, Sandon Road, Therfield, Royston SG8 9RE

PNEUMATIC  
INTERNAL SELF  
RESETTING BUTTON

REVISION:  
1.5

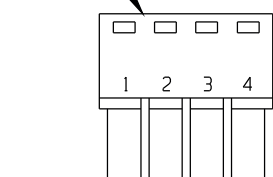
DRAWN.  
AJL

DATE:  
21/06/23

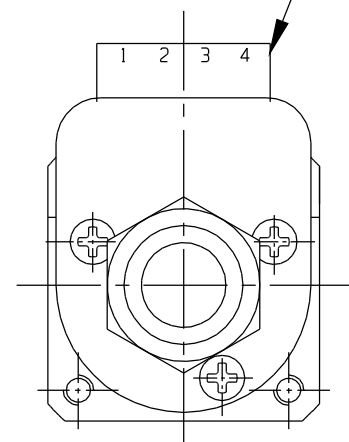
DRAWING NUMBER:  
RPL-ISRB

DATA SHEET SELF RESETTING PTE BUTTON (TERMINAL BLOCK)

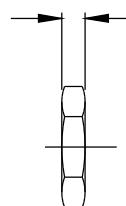
PLUGABLE BLOCK



TERMINAL HEADER

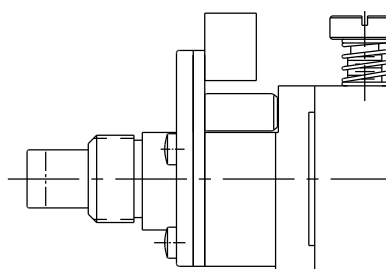


3.1MM  
15/32<sup>ND</sup> NPT THREAD



ADJUSTMENT SCREW -  
1 - 60 SECOND DELAY.

**NOTE:** (OVER TIGHTENING SCREW  
MAY PREVENT RESETTING)



**1. TERMINAL PINS 2 & 3 NORMALLY . OPENING  
PINS 1 & 4 NORMALLY. CLOSED.**

**2. SWITCH: 5 AMP 12 VDC**

**3. CONSTRUCTION: ANODIZED ALUMINIUM HOUSING;  
PLATED STEEL PLUNGER; BRASS ADJ SCREW**

**4. TIMING REPEATABILITY TOLERANCE +10%  
AT CONSTANT TEMPERATURE**