

## FELT REINFORCED FLEXIBLE WATERPROOFING TAPE ( For L-Shaped Joint in Bathroom, Kitchen & Terrace )

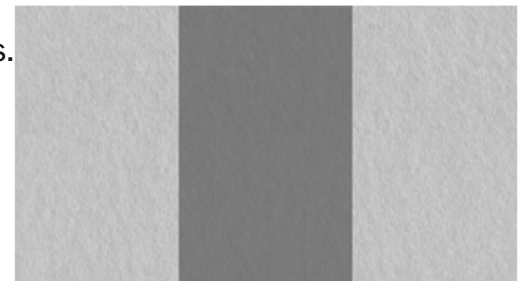
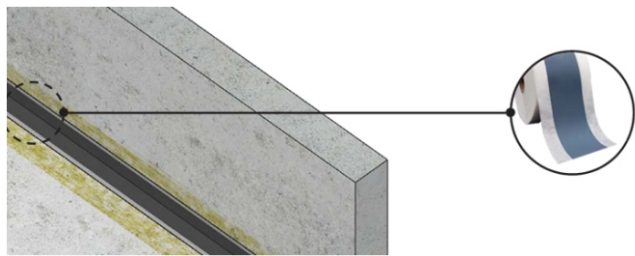
ElastPro Felt Reinforced Flexible Waterproofing Tape is a thermoplastic elastomer (TPE) based waterproofing tape, specifically designed for insulation of waterproofing of all L-Shaped construction joints in buildings and residential areas. Compatible with various liquid waterproofing products and cementitious mortars. A thick coat of suitable waterproofing product is applied on the construction joint and tape is embedded in it before it dries, another layer of liquid waterproofing product is added on top. This is an extremely economical product and must be used in all water prone regions to ensure longevity of the structure.

### ELASTPRO FELT REINFORCED FLEXIBLE WATERPROOFING TAPE

Comes in two designs \* one side fleece (OSF) and \* both side fleece (BSF).

### APPLICATIONS

- Corners between adjacent walls.
- Walls and floor.
- Sealing pipes and drains in bathrooms.
- In wet areas, showers, kitchen, water tanks, balconies, parapets, terraces, sealing joint in pre-cast panels.
- Cracks and cold joints.
- For direct application under ceramics, natural stones & tiles.



### FEATURES & BENEFITS

- Superior technology TPE (Thermoplastic Elastomer) material, rupture, chemical and water resistant.
- Highly flexible and elastic. Weather and UV resistant, eco-friendly material.
- Time saving simplified installation and cost effective application.
- Long term protection at water sensitive areas, can be used in areas subject to full immersion.
- Compatible with epoxy adhesives, bitumen, various waterproofing liquids and cementitious mortar.

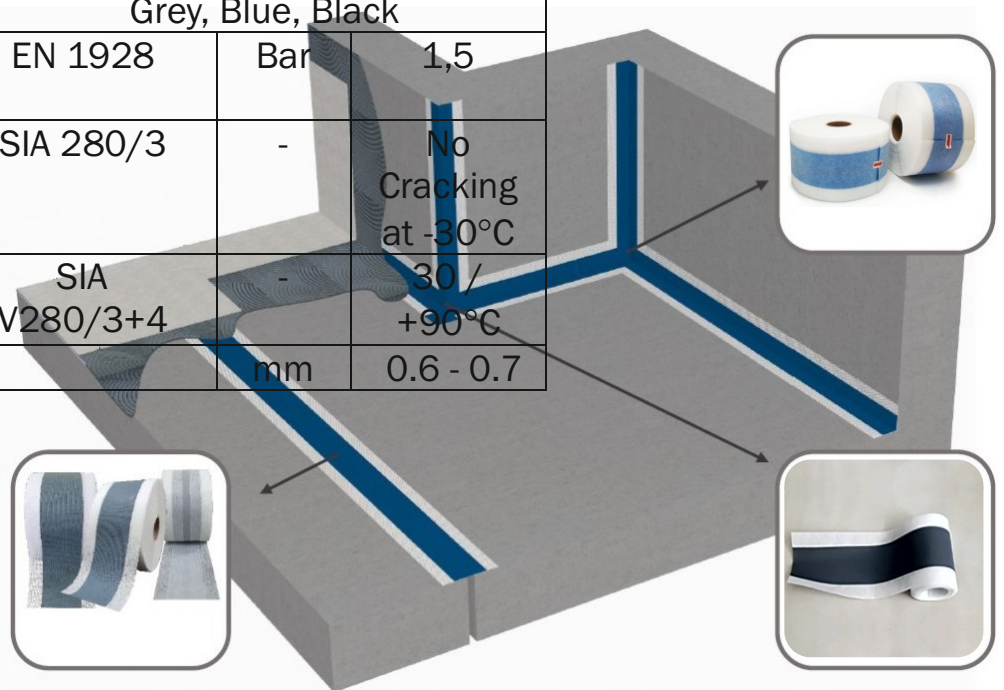


## APPLICATION PROCEDURE

- Clean the surface thoroughly it should be free from dust, loose particles, oil, grease, etc.
- Apply thick coat of suitable liquid waterproofing product on the L-shaped construction joint, embed ElastPro Felt Reinforced Flexible Waterproofing Tape in it before drying.
- Apply second thick coat on top of the tape. Make sure no bubbles are formed, the felt part should be pressed with a roller or brush to ensure full contact with the waterproofing layer at every point.
- Ensure that the felt part remains fully covered between the two layers.

## TECHNICAL FEATURES:

TEST	STANDARD	UNIT	VALUE
Tensile Strength (Transverse)	EN-ISO 527-3	MPa	30
Tensile Strength (Longitudinal)	EN-ISO 527-3	MPa	76
Elongation at Maximum Load (Transverse)	EN-ISO 527-3	%	139
Elongation at Maximum Load (Longitudinal)	EN-ISO 527-3	%	22
Hardness	ISO 868	Shore A	55
Colour	Grey, Blue, Black		
Water Pressure Resistance	EN 1928	Bar	1,5
Cold Folding	SIA 280/3	-	No Cracking at -30°C
Service Temperature	SIA V280/3+4	-	-30 / +90°C
Thickness		mm	0.6 - 0.7



## PRODUCT CODE

1. TPE-Tex120 - 120/70/0.7MM (OSF) Grey
2. TPE-Tex120 - 120/70/20/0.6MM (BSF) Blue
3. TPE-Tex120 - 120/70/20/0.6MM (BSF) Black

Manufactured and Marketed by :Ankit Polymers  
Plot No. 83, Pace City 1, Sector-37, Gurugram, Haryana, INDIA-122001

☎ +91-9873507113 / 9810396709 / 9811693280

🌐 [www.elastpro.com](http://www.elastpro.com), [www.elastpro.in](http://www.elastpro.in)

✉ [ankitpolymers1997@gmail.com](mailto:ankitpolymers1997@gmail.com)