

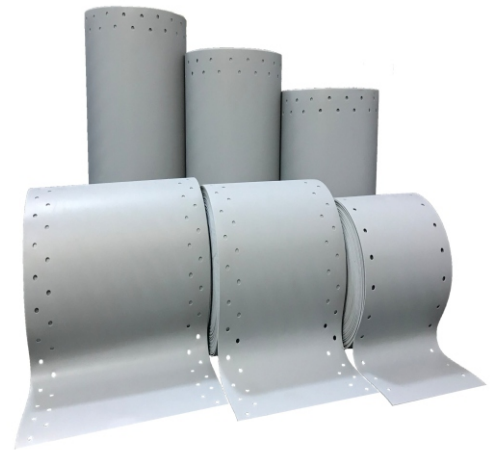
FLEXIBLE TPE EXPANSION JOINT TAPE

(For Expansion/Contraction/Construction/Movement joints in civil structures)

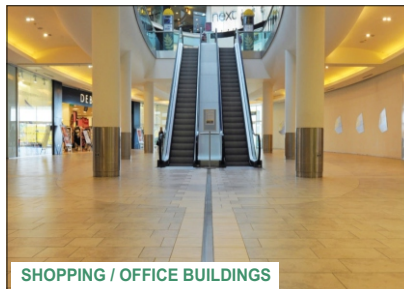
ElastPro Flexible TPE Expansion Joint Tapes are made of thermoplastic elastomer material laminated with hole punching on both sides, designed specifically to provide insulation and waterproofing of high movement expansion gaps, suitable across various surfaces/substrates, providing water tightness. Highly flexible, root-proof, UV and chemical resistant.

These tapes are pasted using 2-Component epoxy adhesives.

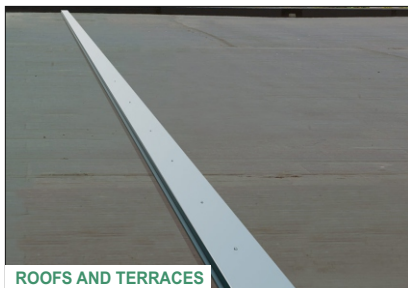
APPLICATION AREAS



FACADES



SHOPPING / OFFICE BUILDINGS



ROOFS AND TERRACES



AIRPORTS



CAR PARKS / BASEMENTS



TUNNELS



POWER PLANTS



SWIMMING POOLS

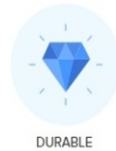
- Waterproofing horizontal and vertical dilatation joints. Waterproofing wide and irregular cracks. Connection joints of slabs and walls.
- Suitable substrates are concrete, mortar, wood, metal, steel, aluminum, epoxy mortar, natural and artificial stones and many other building materials.

ADVANTAGES

Highly flexible TPE material with fleece lamination.
Excellent adhesion, easy repairable and rupture resistant.
Root-proof, water, weather, UV and chemical resistant.



CRACK BRIDGING



DURABLE



HIGHLY FLEXIBLE



NON CORROSIVE

TECHNICAL FEATURES:

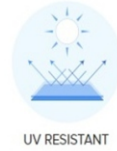
Property	Unit	Method	Value
Shore Hardness (15 sec.)	Shore A	ASTM D2240	80
Tensile Strength	N/mm ²	ASTM D882	> 7
Elongation at Break	%	ASTM D882	> 600
Peel Strength	N/mm ²	ASTM D3807	> 8
UV Resistance	Hours	ASTM G154	> 6000
Service Temperature	Celsius		-40°C to +80°C
Water Resistance	Bar		> 8



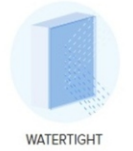
SELF CURING



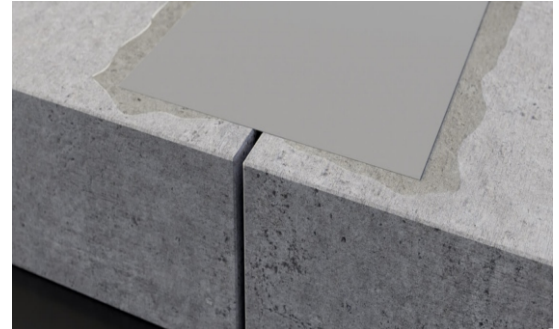
ROOT RESISTANT



UV RESISTANT



WATERTIGHT



APPLICATION PROCEDURE

Surfaces must be clean, sound and dry. On damp surfaces the pull off strength should be tested. Dust, oil, grease, old coatings, laitance, efflorescence, rust, curing compounds, wax, formwork release oil and similar contaminants must be removed prior to application. Over Concrete surfaces if necessary the substrate must be sanded to guarantee optimal adhesion of ElastPro Adhesives. Verify the substrate has been properly cured. Concrete should obtain 80% of design strength, typically achieved within 3-14 days. Irregularities on the substrate must be repaired.

1. ElastPro Adhesives is applied to the prepared substrate on both sides of the joint so both sides of the tape are embedded into the adhesive on a width of at least 1 1/2" (38mm).
The layer thickness of the Adhesive should be approx. 0.08" (2.0mm).
2. The Tape is then immediately embedded into the fresh adhesive and pressed onto the adhesive using a hand roller or a similar suitable tool. Ensure the tape has good contact to the adhesive everywhere.
3. Then a second layer of Adhesive is applied on top of the Tape so that the edges of the tape are over coated on a width of min. 2" (50mm). Also, apply Adhesive so that it covers the substrate next to the tape on a width of at least 3/4" (19.0mm).

DIMENSIONS & PACKAGING

25 meter roll length, 1 and 2 mm thickness. 150,200,300,400,500,600 MM width rolls available.
Customization optional for bulk quantity.