

A background image showing a welder in a workshop. The welder is wearing a brown leather jacket and gloves, using a welding torch on a metal piece. Sparks are flying from the welding point. In the foreground, there is a workbench with various tools, including a yellow tape measure and safety glasses.

Learning That Works

Northland Workforce Development Center

998 Platte Falls Rd | Platte City, MO 64079 | (816) 858-5505

nwddkc.org | green.jeff@pcr3schools.org



Our mission is to prepare students for a continually changing world by **providing relevant experiences.**

Northland Career Center

Now, Northland Career Center (NCC) is promoting the construction of a **new, state-of-the-art career center**, the Northland Workforce Development Center (NWDC) that will:

- Develop a workforce center in a more demographically diverse and accessible area while creating greater social mobility for all of Kansas City
- Generate qualified candidates for local, in-demand, high-wage workforce positions
- Provide more relevant, career focused opportunities for more students while reducing current waitlists
- Create a natural pipeline from high school to higher education in partnership with MCC and other post-secondary entities in the KC area
- Foster real-world learning opportunities and educator externships
- Serve as a community asset and resource for Kansas Citizens and Northlanders of all ages

In Demand

Northland Career Center and Platte County School District have extended their effective collaboration to include the Northland Regional Chamber of Commerce, Clay County EDC, Platte County EDC, the KC Chamber, PortKC and the Northland Education and Business Alliance, and other strategic partners.

Together, they will continue to forecast, quantify and address the region's current and foreseeable workforce requirements, so the Northland Workforce Development Center can serve as an economic engine for the entire area.



No More Waiting

Northland Career Center Consortium serves approximately 17,000 Clay County and Platte County students, but the Platte City campus has exceeded its capacity for enrollment.

Sadly, a growing number of students, excited about starting their journeys to in-demand careers, are forced to wait ... and wait.



Preparing a Pipeline of Homegrown Talent

More than 190 area stakeholders, including 100 industry professionals, participated in focus groups outlining the need for Northland Career Center. We received 1,107 pieces of feedback and information.

What we heard, loud and clear, is this: Not only will the new NWDC support more students, it will help address the region's economic and workforce challenges by partnering with employers to identify talent gaps and developing curriculum to fill those gaps.

There has been a 51% increase in students placed on waiting lists. This represents **an enormous loss of potential**, not only for our students, but for our community. The number of students stuck on a waiting list for the past three years include:

Health Sciences, 213

Law Enforcement/Crime Scene Investigation, 129

Diesel Technology, 116

Industrial Welding, 114

Culinary Arts, 72

Construction Technology, 59

Heating, Ventilation and Air Conditioning, 42

Industrial Automation and Robotics, 30

Aviation Technology, 21

Opportunities That Will Last a Lifetime

The reality is that every student who is unable to participate in Northland Career Center's programs when they're ready is at risk of losing interest, focus, and countless future opportunities.

Especially for less-advantaged students, this setback can profoundly and adversely impact the course of their lives.

Without a clear path from high school to a program that engages them, to acquiring skills that boost their confidence, and to a career that provides financial support, there are far too many "easy exits" from the road to a better life.

We must prevent this from occurring.

Keeping Students Engaged

Auditory learners store information by hearing and listening. Visual learners store information by reading or looking at images. But to store information in a way that can be comprehended and retained, tactile learners need to touch and do—often referred to as hands-on learners.

Northland Career Center's instructors understand that there is a large number of learners who don't function in the typical school environment. NCC instructors provide

learning opportunities that are approximately 70% hands-on to support these learners who learn better by doing versus sitting. NCC's team has been recognized nationally as an award-winning career and technical education (CTE) school for supporting all learners with innovative, personalized instructional practices in state-of-the-art lab spaces.



Location. Location. Location.

Many students do not own or have access to private transportation and rely on their school districts for their commute to school and off-campus activities. Yet, economic disadvantage or lack of transportation should not be barriers to accessing innovative CTE programs. The new Northland Workforce Development Center will be located approximately 10 to 15 minutes from the 16 area high schools.

The 19-acre site, located in the epicenter of the Northland, will connect all Northland teachers and other educators to workforce representatives resulting in more relevant and meaningful partnership opportunities including educator externships. This location will help reduce travel time and costs while increasing instructional time, career exploration and opportunities to participate in more campus activities.

The current location of NCC, in the northwest corner of the Northland, is not near either the geographic center or more demographically diverse areas of the Northland, which poses a challenge for most efficiently serving the diverse and geographically dispersed population of the Northland community.

PROGRAMS

Current Programs

Agricultural Sciences
Aviation Technology
Construction Technology
Culinary Arts
Diesel Technology
Heating, Ventilation and
Air Conditioning
Health Sciences
Industrial Automation and Robotics
Industrial Welding
IT Professionals
Law Enforcement/Crime Scene
Investigation
Teaching Professions

Potential Future Programs

Automotive Technology
Baking and Pastries
Cosmetology
Dental Assisting
Digital Design, Programming
and Cybersecurity
Electrical and Plumbing Technologies
Fire Science/EMT
Health Tech Careers
Hospitality and Event Management
Industrial Machining
Junior ROTC

*For more information
and building layout/ plans:*



Metropolitan Community College and Northland Career Center

Partnering to Support Local Workforce Needs

Metropolitan Community College (MCC) will be partnering with Northland Career Center to establish the new Northland Workforce Development Center. The NWDC will increase career opportunities for students living in the Northland region while helping to address workforce shortages in Clay and Platte Counties.

MCC will continue serving on the NWDC campaign committee, working along with NCC leadership, architects and builders to design the facility for secondary and post-secondary career and technical education programs. The two institutions are making adjustments to curriculum so all Career and Technical Education programs are covered but not duplicated. The MCC/NCC partnership will help multiply the outcomes this region is able to make in creating innovative solutions for workforce development. NCC will also partner with other post-secondary institutions to provide dual credit options and evening learning opportunities.

Economic Impact

In 2022, the Missouri Legislature and Governor Parson approved \$30 million in support of the Northland Workforce Development Center. In addition, early support has been garnered from Meta, Hunt Midwest, and other workforce and labor organizations.

“We supported this campaign, not only to ensure a pipeline of skilled workers continues to grow, but because the quality of training and education that NCC delivers is outstanding.”

Kevin Kuritz
President and Organizer of
IronWorkers Local 10

Learning That Works Campaign Goals



Student Testimonials from Recent Graduates



"I love the clinicals and getting hands-on experience in the lab. I'm preparing to leave for basic training, but once I'm back, I will be

applying to hospitals."

Kaleb Gieselman

Diesel Technology and Health Sciences,
Kearney School District



"Every staff member and instructor at NCC knew my name, and I knew all of theirs. Everyone was so kind and encouraging.

I am now pursuing my bachelor's in elementary education. I learned so much through my internships and in-class instruction. My experience at NCC gave me a great head start."

Jana DeVaul

Teaching Professions
Liberty School District



"As a student in NCC's CSI and law enforcement program, I learned more than I thought imaginable. I'm now a student at

Maple Woods Community College and plan to complete a degree in criminology before attending the police academy. I am thrilled I had the opportunity to start on this great path for me at NCC."

Jenifer Bond

Law Enforcement/CSI
Northland Christian Schools

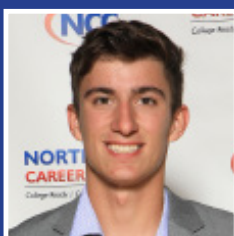


"This program has prepared me for the next step of becoming a police officer. I currently have a position as a security officer. I

can't wait to join the police academy and serve this community in the future."

Oumar Coulibaly

Law Enforcement/CSI
North Kansas City School District



"Northland Career Center was a wonderful experience for me. I was able to do an internship my senior year. Shortly after

graduation I got a HVAC job with a very nice starting wage and sign-on bonus. I love what I am doing now, and I couldn't have done it without NCC."

Caden Wiser

Heating/Cooling and Climate Control,
North Kansas City School District

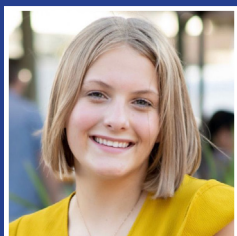


"Before starting construction technology at NCC, I had never operated a saw or barely touched a hammer. Also, I interned

with Incite Design Studio in downtown Kansas City where I was able to shadow construction management firms. After two successful years in NCC's program, I now can say I have soldered piping and built a frame for a house."

Ryleigh Touart

Construction Technology
Park Hill School District

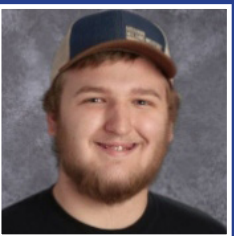


"At NCC I learned life-long skills of professionalism, communication and adaptability. I am attending

Kansas State University to study marketing. My advice for future NCC students is to remain flexible and keep learning. You don't have to be one thing for the rest of your life."

Blair Bolling

Culinary Arts
Platte County School District

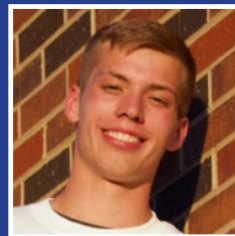


"I started learning welding at NCC as a new hobby. I thought it sounded interesting and realized it would be a good career

for me as well. After graduating from NCC, I went to the Missouri Welding Institute and got my certifications in structural and pipefitting. After that, I went to work for Caterpillar Inc. Now I work as a facility maintenance and property manager for Target. For me, NCC is still the most impressive thing on my resume. It got me to where I am today."

Aaron Kratofil

Industrial Welding
Smithville School District



"I was able to take part in a real-world cable experience that supported the implementation of a brand new audio visual

system. It is nice to know that the system we designed and installed is still used today. The training I received at NCC prepared me to start my college career in studying cybersecurity at Missouri Western. The professional skills I learned also have played a role in my success."

Drake Stelijes

IT Professionals
West Platte School District