

Learning That Works



Northland Workforce Development Center

Bi-Monthly Capital Campaign Update - Update #3, Friday, September 6, 2024

Dual Purpose: *Creating Opportunities for Students/Building a Workforce*

Federal Funding Opportunities

As part of our federal campaign strategy, we are attempting to secure federal funds through two potential sources. Federal grants, including the Economic Development Administration (EDA), are an important source of potential funding for this project. We have met with regional representatives and will continue to build our application for a large grant award. We may need *your help* in securing this opportunity. There are potential support documents from legislators and industry partners to officially submit this application.

The other option is to seek community grants. We have met with some of our federal legislators and/or their local staff members to have these discussions regarding these grant opportunities. If you are aware of other federal funding/grant opportunities, please let us know!

NWDC Current Campaign Status and Strategies

The campaign has raised **\$42,655,633** (includes the state funds). *Gifts are shown on page 3 of this document.*

The campaign is actively seeking funding from five sources:

- Business and Industry Gifts
- Gifts from Individuals
- State and Local Commitments
- **Federal Opportunities**
- Local and National Foundation Gifts

Key Actions for the NWDC Campaign

- On April 5, 2024, the NWDC Corporation was officially recognized by the IRS as a 501(c)(3) Corporation. We have used this designation to apply for several large grants through local and national foundations.
- On Thursday, September 5th, we launched a Request for Proposal (**RFP**) to seek solutions for bridge financing. Bridge financing is a common strategy used in a campaign like the NWDC's to fill a gap between current construction costs and pledges or contributions made over several years. The RFP is posted on the NWDC Campaign [website](#) with responses due at 3:00 PM on Thursday, September 19, 2024. We are seeking creative solutions to solve a complex need. Call Brian Noller at (816) 206-8750 or email at noller.brian@pcr3schools.org with any questions about this RFP.
- We have been meeting with businesses, individuals, and foundations, legislators, and other strategic partners on a regular basis to cultivate relationships within this campaign. If you have met with us and want us to follow up, please reach out. If you or another individual or organization want to meet with our team for the first time, please contact Brian Noller.
- We have done some mild restructuring to our Naming Rights **Document** and have added the Many Ways to Give to NWDC **insert**. The NWDC will be a 50 year plus Northland Community asset. **Don't miss out on being a part of one of the biggest game changers to come to our region of the metro!**

SEPTEMBER UPDATE

An additional \$7 Million allocated and approved in State Budget as a full \$37 Million match to \$74 Million NWDC Budget!

Thank you to our latest donors:
*Homebuilders of Greater KC
City of Parkville*

Campaign Total to Date:
\$42,705,133

What's Next?

There will be several NWDC Presentations occurring this month to various Northland/KC Community Groups

- There will be an NWDC Campaign Presentation at the Clay County EDC's Look North Awards on Friday, September 13th at 11:30 AM at Harrah's Casino. At this event Dave Johnson, Owner and Founder of Chicken and Pickel will be recognized with the Look North Award. Thanks to Bridget Mendoza, NWDC Campaign Co-Chair, for coordinating this opportunity. Bridget is the Membership Director for the Clay EDC.
- There will be an NWDC Campaign Update at the Platte City Chamber on Thursday, September 19th at 11:30 AM. This meeting will be held at the Northland Career Center.
- The Platte County Conventions Bureau is hosting a meeting on September 23rd at 1:00 PM. Tina Chace and Jeff Green will provide NWDC Campaign updates and discuss the success of the current NCC Culinary Arts Program.

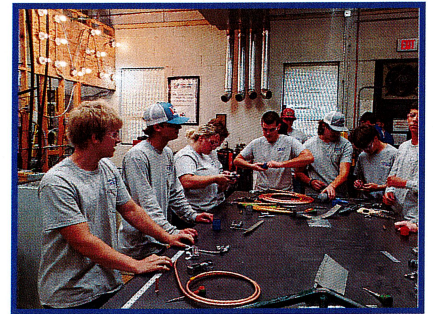
We have several meetings scheduled with potential partners this month and we will continue to cultivate those partnerships/relationships.

Bi Monthly Updates: [Update #1 - May 3, 2024](#) | [Update #2 - July 5, 2024](#)

Supporting videos, documents and websites:

(Links below in **red**)

- [Marketing Video](#) (YouTube)
- [Case Statement](#) (Updated 8/01/24)
- Front/Back [Flier](#) with QR code (Updated 8/01/24)
- Naming Rights [Document](#) (Updated 9/01/24)
- NCC Current and Future Programs [Document](#)
- NCC/NWDC [Website](#)
- Social Media: [LinkedIn](#) | [Facebook](#)



Northland Career Center Highlights

Northland Career Center had a great start to the school year. See examples of hands-on learning that occurred the first few weeks of school.



1801 Branch Street | Platte City, MO 64079
(816) 858-5505 | northlandcareercenter.org

Brian Noller, Campaign Lead, nollerb@platteco.k12.mo.us
Jeff Green, Campaign Co-lead, greenj@platteco.k12.mo.us

Learning That Works



NWDC Donor List by Category (Received January 1, 2023 - September 6, 2024)

Business and Industry Gifts - Total: \$4,876,504

America's Auto Auction - KC	American Welding Society - KC
Conex King	Connections Bank
Emery Sapp & Sons	Home Builders Association of Greater KC
Hunt Midwest	Iron Workers Local 10
JE Dunn	Marlen International
MD Management	Meta
Mid America Carpenter's Union	Operating Engineers Local 101
Sheet Metal Workers Local 2	Synergy Services
VSM Engineering	

Gifts from Individuals - Total: \$56,129

Anonymous Donations & Other Gifts	Linda Bauer
Stephen Clark	Curt Claycomb
Albert and Christy Collins	Dr. Ellen Crowe
Doug and Melanie Doll	Jeff and Sarah Green
Dr. Jay and Dr. Jennifer Harris	Andy Hrasky
Laura Hulett	Karen Jacobs
Brian and Courtney Johanning	Colleen Jones
Dr. Michelle Kratofil	Teri Laverty
Brian and Anita Noller	Aaron Panek
Dr. Larry Rideaux Jr.	Sarah Ripoll
David Slater	Nathan Vanice
Robert Walters	

State and Local Commitments - Total: \$37,752,500

State of Missouri	City of Riverside
City of Kansas City	City of Parkville

Gifts from Local and National Foundations - Total: \$20,000

Platte County Education Foundation
Smithville Education Foundation

Overall Total Raised	\$42,705,133
-----------------------------	---------------------

Funding Goal	\$74,000,000
---------------------	---------------------

Remaining Funds Needed	\$31,344,867
-------------------------------	---------------------