

FULLY TENANTED - 6 BEDROOM HMO - RUGBY - CV21







SUMMARY

- 6 Bedroom HMO
- Purchase Price - £300,000
- Market Value-£350,000
- Rental Income - £3,000pcm/
£36,000 per annum
- Fully Tenanted



Call for details
+441615540150


WHAT ARE YOU BUYING?

	Freehold	1	X	6
	bedroom	HMO	1	x
	bathroom	1		x
	Reception			

DESCRIPTION

- 6 bedroom HMO
- 1 bathroom extra w/c
- Tenanted
- Freehold
- Purchase Price - £300,000
- Market Value - £350,000
- Tenanted - £3,000 pcm / £36,000 Per Annum
- Buyer to pay council tax £169 pcm
- Tenants pay bills
- Slight cosmetic works required
- Close to local amenities
- On street parking

Comparable



Murray Road, Rugby
Terraced 5 3

BEAUTIFULLY PRESENTED, FULLY REFURBISHED BAY FRONTED TOWN HOUSE with a wealth of original character features, private rear garden, five bedrooms and basement. Situated on Murray Road within easy walking distance of the town centre and Rugby train station offering a 50-minute commute to London Eus...

Added on 27/08/2024 by Carter and King Estate Agents, Rugby

£475,000
Guide Price

RECENTLY RENOVATED

CARTER KING 01788 223200
Local call rate

Contact Save



Murray Road, Rugby
Semi-Detached 4 2

Shipways will be conducting an open house event on this property and viewings are arranged by appointment only, please call today to avoid missing out on this fantastic modern Victorian terraced property in the heart of Rugby.


Reduced on 04/09/2024 by Shipways, Rugby

£375,000
Offers Over

PREMIUM LISTING

shipways 020 3974 2117
Local call rate

Contact Save



Grosvenor Road, Rugby, CV21
House Share 1 1

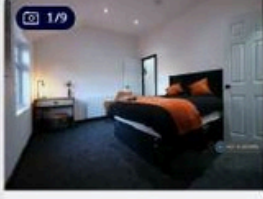
****Double furnished room - bills included - suitable for single OR couple (£50 extra /month) - available mid-Nov****

Added on 07/10/2024 by Red Brick Sales & Lettings, Coventry

£600 pcm
£138 pw

RED BRICK 024 7630 9000
Local call rate

Contact Save



Grosvenor Road, Rugby, CV21
House Share 1 1

Newly Renovated Deluxe Town Centre En-Suite Rooms - BILLS INCLUSIVE. Located only a 5 minute walk into Rugby town centre and a short walk to Rugby train station, you do not want to miss...

Added on 07/10/2024 by OpenRent, London

£695 pcm
£160 pw

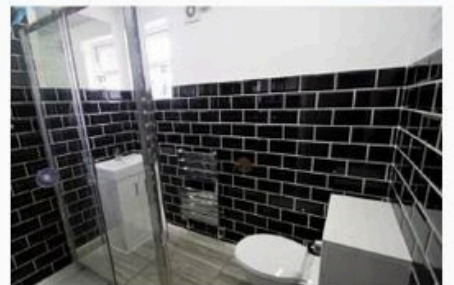
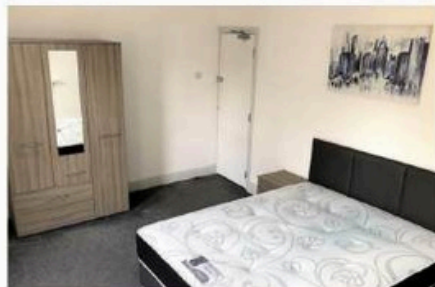
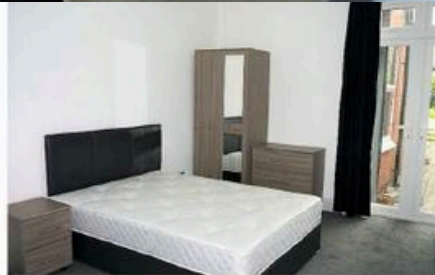
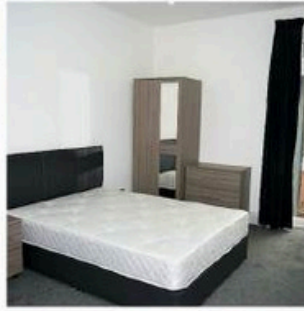
OpenRent 020 3322 3265
Local call rate

Contact Save

Photos

PG NETWORK
PARTNER GROUP NETWORK

LINGVO 24
Multilingual Investment and
Business Assistance Centre



ico.
Information Commissioning Office



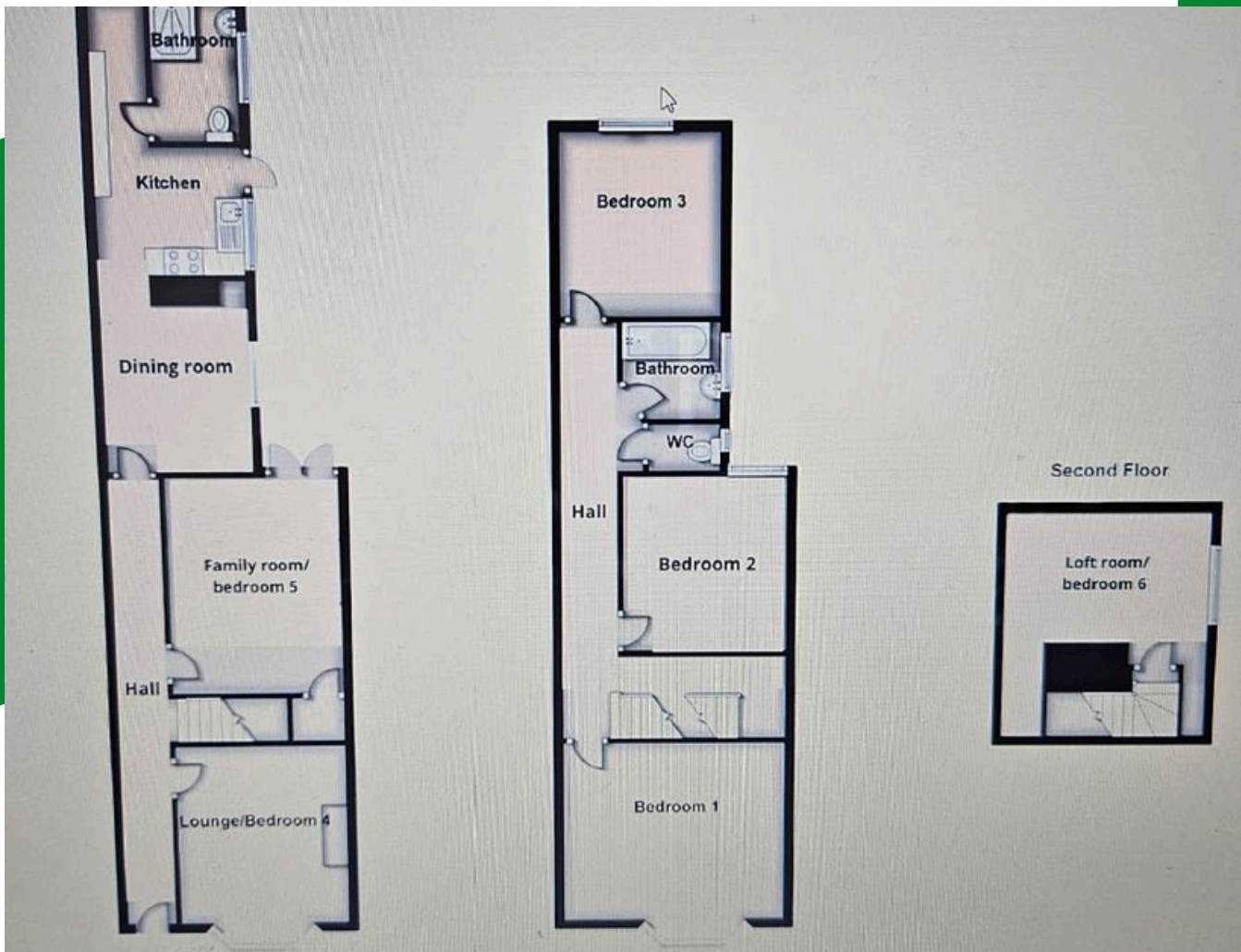
**The Property
Ombudsman**

For More Information
yuzhakov@partner-group-network.com partnergroupnetwork.uk

Visit Us

Call for details
+441615540150

Floorplan



Call for details
+441615540150

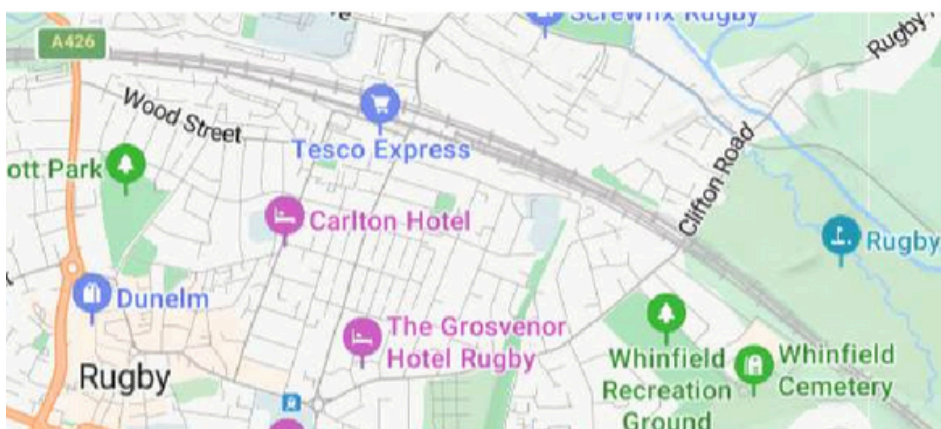
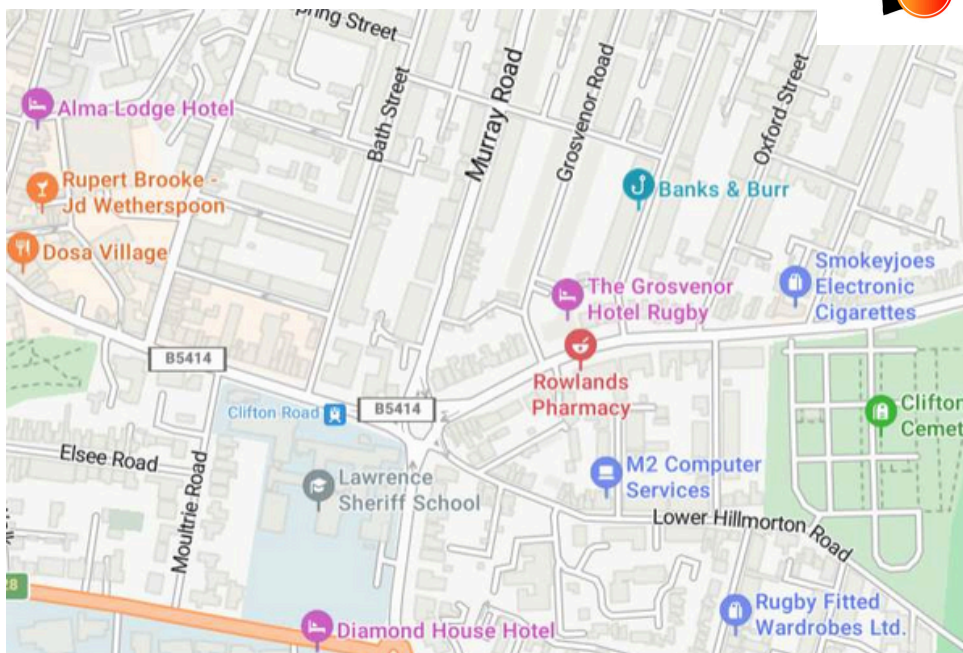
For More Information
yuzhakov@partner-group-network.com Visit Us
partnergroupnetwork.uk



LOCATION



LINGVO 24
Multilingual Investment and
Business Assistance Centre



Disclaimer: 1. No Legal or Financial Advice: The information provided including but not limited to property brochures, market analysis, and investment advice, is for general informational purposes only. It does not constitute legal, financial, or professional advice. 2. Accuracy of Information: While we strive to provide accurate and up-to-date information, we make no representations or warranties of any kind, express or implied, about the completeness, accuracy and reliability. You acknowledge that any reliance you place on such information is strictly at your own risk. 3. Limitation of Liability: To the fullest extent permitted by law, FPC shall not be liable for any direct, indirect, incidental, special, consequential, or punitive damages arising out of or in connection with your use of our services or reliance on the information provided. 4. Indemnification: You agree to indemnify and hold harmless FPC, its directors, officers, employees, agents, and affiliates from any claims, liabilities, damages, losses, costs, or expenses (including legal fees) arising out of or in connection with your use of our services or any breach of these terms and conditions. 5. Changes to Disclaimer: We reserve the right to modify or update this disclaimer. By continuing to use our services after any such changes, you accept and agree to be bound by the revised disclaimer. 6. Governing Law: This disclaimer shall be governed by and construed in accordance with the laws of England and Wales. Any disputes shall be subject to the exclusive jurisdiction of the courts of England and Wales. By using our services, you acknowledge that you have read, understood, and agreed to be bound by this disclaimer. If you do not agree to any part of this disclaimer, you must not use our services.

ico.



The Property
Ombudsman

Call for details
+441615540150

For More Information
yuzhakov@partner-group-network.com partnergroupnetwork.uk

Visit Us