



# WAYNE COUNTY HISTORICAL SOCIETY *Newsletter*

Don't let local history be a mystery!



**MERRY CHRISTMAS  
HAPPY NEW YEAR 2021**

**WINTER 2020**

Wayne County Historical Society  
Fairfield Public Library  
300 S.E. 2<sup>nd</sup> Street  
Fairfield, Illinois 62837

Early History Museum & Archives  
300 S.E. 2<sup>nd</sup> Street, Fairfield  
Open Saturdays year-round  
10:30am - 1:30pm

Hanna House Museum  
100 E. Center Street, Fairfield  
Open Saturdays April-October  
10:00am - 2:00pm

Olive Branch Schoolhouse  
Leo French Park, Fairfield  
Open various times  
and by appointment

e-Mail:  
[wayneillinoishistory@gmail.com](mailto:wayneillinoishistory@gmail.com)

Website:  
[wayneillinoishistory.com](http://wayneillinoishistory.com)  
[Wayneillinoishistory.org](http://Wayneillinoishistory.org)

Facebook:  
[Wayne-County-Historical-Society](https://www.facebook.com/Wayne-County-Historical-Society)

The Hanna House museum and the School house are aglow with holiday lights. The Hanna House is closed until spring, while the Early History museum continues to be open on Saturdays. Please use the exterior door.

Our thanks to Jami Roethe, Niki Roethe and Gina Bashore; our archivists, who do an amazing job with the museums, programs, archives and Facebook page.

What are your holiday traditions? Some change, some stay the same as the years go by. Have you noticed the festive, decorated light poles in Fairfield? Perhaps a new tradition. Children can visit Santa at our beautiful park surrounded by the wonderful lighted displays. Several historic older homes in Fairfield are beautifully lit for Christmas this year.

May your days be merry and bright as we look to the new year.

Best wishes,

*Historical Society  
Officers, Board  
and Archivists*

Wayne county was as pretty as a postcard following the December 17th dusting of snow.

Photo by Mike Dreith



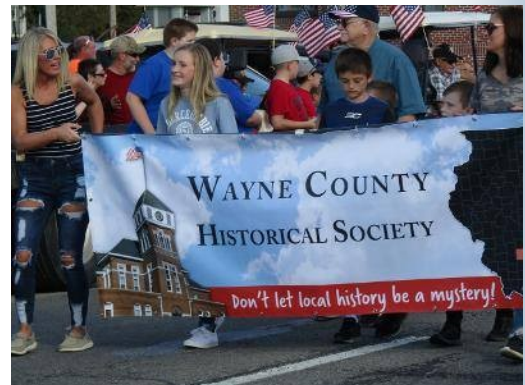
2020

**Hanna House Visitors**

The Hanna House Museum ended its 2020 season with a total of 222 visitors between the first of June and the end of October. The museum was open Saturday, October 31, and passed out treat bags to children, several in costume.

The Hanna House is closed for the winter from November until April. Currently a Christmas tree glows just inside the doors of the Hanna House.

Trick-or-treaters were welcomed to the Olive Branch Schoolhouse in Leo French Park on Halloween. Christmas lights have been mounted along the roof of the lovely schoolhouse and a Christmas tree is visible just inside.

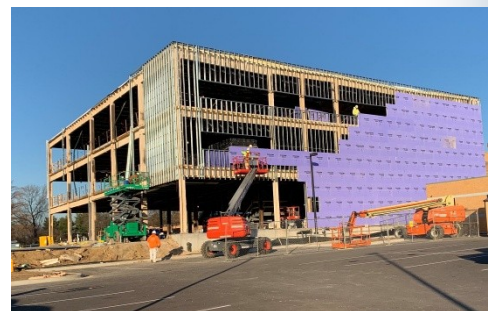


**Parades**

The Wayne County Historical Society Banner made an appearance at the Veterans and Christmas parades. Thanks to Mike Mossburger for including his vintage grey corvette. Also spotted at a parade were members Derek Dunn (left) and Otis Brach (right).

**FMH Expansion 2020**

Congrats to Fairfield Memorial Hospital on the exciting progress made with the building expansion project.



**Search FACEBOOK and "LIKE" the Wayne County Historical Society popular page!!**

**Website Update** Visit the Wayne County Historical Society Website at the following link.

[Home Page \(wayneillinoishistory.com\)](http://wayneillinoishistory.com)

We are in the process of updating and expanding the website at the following link.

[Wayne County Historical Society \(wayneillinoishistory.org\)](http://Wayne County Historical Society (wayneillinoishistory.org))



**Early History Museum**

The Early History Museum is located at the Fairfield Public Library. The Museum is open on Saturdays from 10:30am to 1:30pm. Visitors are asked to use the door on the alley to the museum..

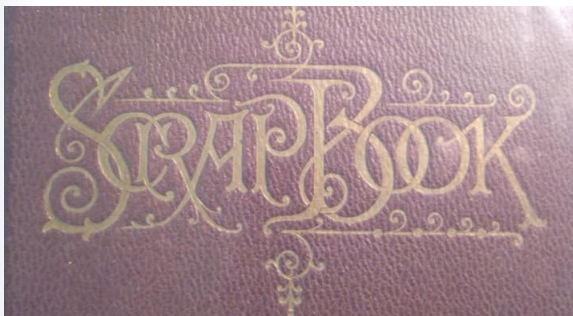
**1800s era Ballot “Boxes”**

The Early History Museum recently received a donation of voting ballot boxes from the Civil War era donated by Doug Aman. The boxes are about the size, shape and composition of a medium sized barrel. These unusual items are on display at the museum.



**William E. Borah Scrapbook**

Thank you to Rita Otey for the donation of a scrapbook full of political cartoons that feature Senator William E. Borah.



Borah was born in Wayne County, Jasper Township in 1865. As an adult he moved to Iowa and was elected to the U.S. Senate where he served for 33 years.



This scrapbook can be seen at the Early History Museum any Saturday from 10:30 to 1:30.

**2020 United States presidential election**

The Democratic ticket of former Vice President Joe Biden and incumbent U.S. Senator from California Kamala Harris defeated the Republican ticket of incumbent President Donald Trump and Vice President Mike Pence.

The election saw the most votes ever cast for a candidate in a U.S. presidential election.

Source: [Wikipedia.com](https://en.wikipedia.org)

**COVID Statistics 2020**

**Wayne County**

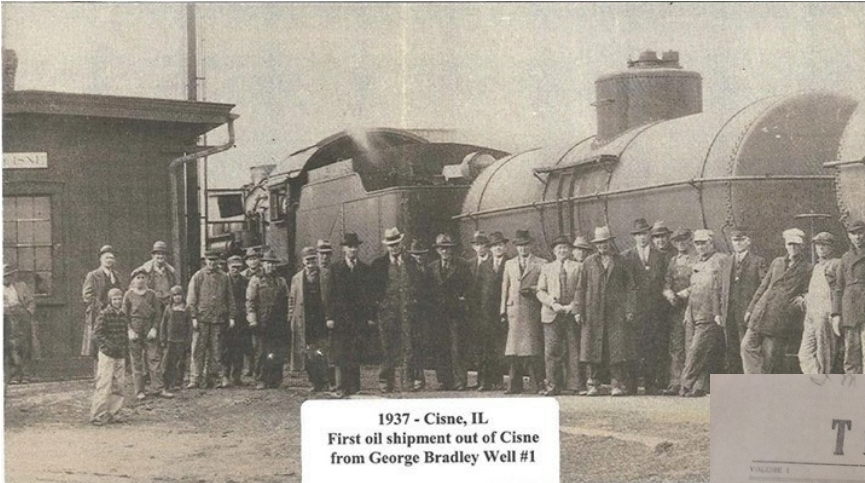
Source: *Wayne County Press December 17th 2020*

1061 people	Lab confirmed positive COVID-19 cases
41 people	Deaths—COVID confirmed

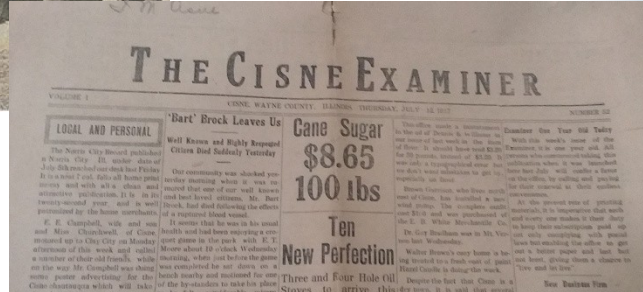
**United States**

Source: *covid19.who.int December 17. 2020*

16,245,376	Lab confirmed positive COVID-19 cases
298,594	Deaths—COVID confirmed



1937 - Cisne, IL  
First oil shipment out of Cisne  
from George Bradley Well #1



## OCTOBER 2020 MEETING HELD AT CISNE, ILLINOIS

*The Wayne County Historical Society met at the Cisne Community Center with fifteen people in attendance. The group discussed the history of Cisne and northern Wayne county. Historical Society member Harrison Walker shared copies of the Cisne Newspaper from the 1800s.*

A “railroad town,” Cisne was created after the Ohio & Mississippi (later the B & O) railroad came through in 1870. The village was named in honor of Levi Cisne. F.A. Kutz built the first house and was the first merchant. The railroad depot was the second building. Shortly there was a blacksmith shop, saw mill, grist mill, post office, school, and Christian church.

By 1884 Cisne had 3 general stores, 3 groceries, a drug store, hotel, 2 grain buyers, furniture store, blacksmith, wagon shop, and shoemaker.

Cisne became the center of activity with surrounding communities in Johnsonville, Orchardville, Enterprise, and Mt. Erie. “The Cisne Examiner” was the name of the village newspaper.

Many remember the Oil distribution “camp” located in Cisne following the Wayne county oil boom in the 1930s. The oil companies built several small frame houses for the workers. At the time, many Cisne local families rented rooms or apartments to house all the oil camp workers.



## As of December 19, 2020 we have added 37 NEW, FIRST-TIME MEMBERS for 2020.

Current membership is over 150 members and growing!

### 2021 Membership Join or Renew NOW!

*"Now if you are not a member of the Wayne County Historical Society, why don't you join? Everyone has something to add to our history, and you can help. The Historical Society will have a place to save our records. Remember, what you do now will be of the greatest importance to your children, your grandchildren, and all of those who come after you. You must care enough to do something for them. Make a pledge to the Historical Society; let's not let this chance slip away."*

This is a quote from Wasson Lawrence, the first president of the Wayne County Historical Society in 1954. His words still ring true today. The Wayne County Historical Society plans to continue to preserve the history of Wayne County for the generations to come.

The society is not funded by any outside government agency. The membership dues and donations are the only way in which the society is funded. The society maintains and operates Fairfield's only two museums. The Early History Museum and the Hanna House museum are operated by curators Gina Bashore, Niki Roethe, and Jami Roethe.

The Wayne County Historical Society conducts several programs and events for children and adults. A hugely popular Facebook page connects young and old with stories and photos from the past. Search Facebook for Wayne County Historical Society and "LIKE" the page. Short, informative stories about local history can be heard on WFIW radio at 6:50 am every morning.

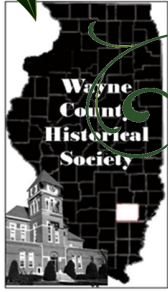
Don't let local history be a mystery! Become a member and help support the Wayne County Historical Society. Dues are tax deductible and are a key source of funding for the Society. The membership fees are applied to the expenses of museum upkeep, public programs, mailing, website support, publicity, equipment, and basic exhibit supplies.

Annual Memberships are \$15 and run from January through December. Lifetime membership is a one-time payment for permanent membership for \$300 (also tax deductible). The Wayne County Historical Society maintains a 501(c)3 status with the State of Illinois as a not-for-profit organization. Contributions are tax-deductible.

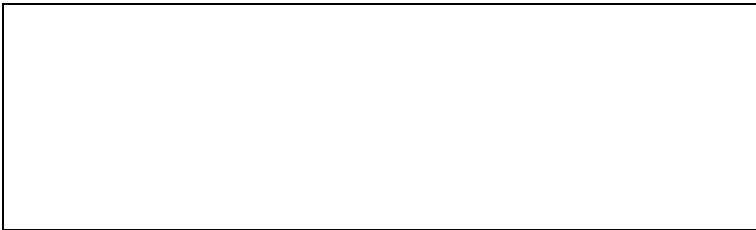
Many people join the society to be actively involved, and others join the society and simply enjoy being inactive and reading their newsletters. We welcome everyone.

**Memorial** Lifetime member Bonnie (Lathrop) Holler, 88 of Fairfield died October 21, 2020. Bonnie attended Wayne City High School and married Ivan Holler in 1949. Their children Jackie, Dennis and Mark attended Fairfield Community High School.

*Our sympathy to all members on the deaths of friends, family and loved ones in 2020.*



Wayne County Historical Society  
 Fairfield Public Library  
 300 S.E. 2<sup>nd</sup> Street  
 Fairfield, Illinois 62837



**WAYNE COUNTY HISTORICAL SOCIETY NEWSLETTER      WINTER 2020**

David Morris, President  
 Donna Savage, Vice President  
 Trustees:            Judith Puckett  
 Curators:            Gina Bashore

Terry Prizer, Secretary  
 Otis Brach            Don Wood  
 Niki Roethe         Jami Roethe

Judy Griswold, Treasurer  
 Doug Aman

**Merry Christmas      Happy New Year      2021**

*Don't let local history be a mystery! Support the Wayne County Historical Society.  
 Use the following form for **NEW** and **RENEWAL** memberships. Thank you!*

**2021 Wayne County Historical Society Membership Form**

First Name: \_\_\_\_\_ Last Name: \_\_\_\_\_

Address: \_\_\_\_\_

City: \_\_\_\_\_ State/Zip: \_\_\_\_\_

E-Mail: \_\_\_\_\_ Phone: \_\_\_\_\_

High School attended: \_\_\_\_\_ Graduation year: \_\_\_\_\_

Option: \_\_\_\_ Annual \$15    \_\_\_\_ Lifetime \$300

Make checks payable to Wayne County Historical Society

Mail or drop off to:  
 Wayne County Historical Society    Fairfield Public Library    300 S.E. 2<sup>nd</sup> Street    Fairfield, Illinois 62837