



Floortex-UK

CEO: Mohammed Shokat

Contact: 07815755851

Floortex-UK

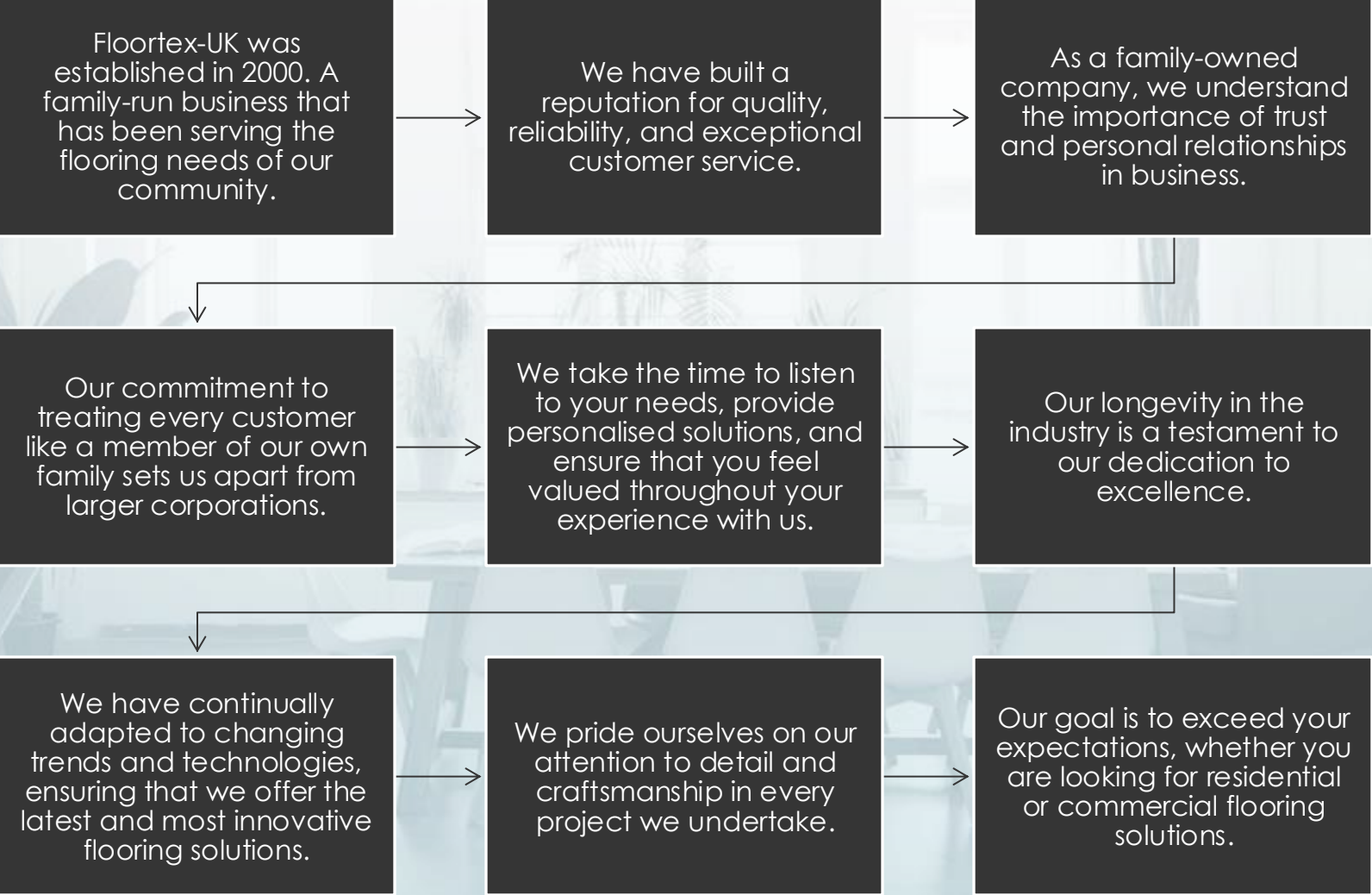
Contents

-  Company Overview
-  Services Offered
-  Installation Services
-  Collections in Carpets
-  Collections in Laminate Flooring, Vinyl And Hardwood Flooring
-  Collections in Our Safety Flooring
-  Types of Underlays
-  Types of Door Profiles
-  Renovation Announcement
-  Featured Projects
-  Why Choose Floortex-UK?
-  Contact Information





Company Overview





Services Offered

1. Carpet Solutions

- Wide variety of styles, colours, and textures.
- Options for residential and commercial applications.
- Expert installation services.

2. Vinyl Flooring

- Durable and easy-to-maintain options.
- Available in various designs, including wood and stone looks.
- Ideal for high-traffic areas.

3. Laminate Flooring

- Cost-effective alternative to hardwood.
- Scratch-resistant and easy to clean.
- Variety of finishes to match any décor.

4. Hardwood Flooring - Herringbone

- Timeless elegance with natural beauty.
- Sustainable sourcing practices.
- Professional installation for a perfect finish.

5. Safety Flooring

- Slip Resistance Flooring.
- Made from robust materials that withstand heavy foot traffic.
- Designed for easy cleaning, essential for hospitals and schools.



6. Binding/Viping services

- Ensures a clean, finished edge on carpets.
- Enhancing the appearance and durability of carpets.
- Variety of Binding Options; surging, tape binding, and fringed edges.





Installation Services



At Floortex-UK, we pride ourselves on providing professional and reliable installation services for a wide range of flooring types. Our experienced team is dedicated to ensuring that every installation is executed with precision and care, resulting in a flawless finish that enhances the beauty and functionality of your space. Here are the key aspects of our installation services for various flooring types:





Installation of All Flooring Expert Assessment: Our team conducts a thorough assessment of the area to determine the best flooring type and installation method.



Subfloor Preparation: We ensure that the subfloor is clean, dry, and level, addressing any issues before installation to guarantee optimal performance.



Seamless Installation: Using advanced techniques, we install flooring with minimal seams for a smooth appearance and enhanced durability.



Finishing Touches: We take care of all finishing details, including trimming and binding edges, to provide a polished look.



Precision Cutting: We use specialised tools for precise cutting and fitting around corners, edges, and fixtures, ensuring a seamless fit.



Adhesive Application: For glue-down installations, we use high-quality adhesives to secure the vinyl firmly to the subfloor.



Underlayment Installation: We install appropriate underlayment to enhance comfort, sound insulation, and moisture protection.



Finishing Services: We offer additional finishing services, including sanding and sealing, to enhance the natural beauty of hardwood floors.



Specialised Techniques: Our team is trained in the installation of safety flooring solutions designed for high-traffic areas or environments requiring slip resistance.



Compliance with Standards: We ensure that all safety flooring installations meet relevant health and safety regulations.





Collections In Carpets

Luxury
Collection

Marakesh, Royale, Luxury, Sisal
Herringbone, Sisal Tigers

Santorini Supreme *Best Rated Carpet in
the Flooring Industry

Mediocre
Range

Tabago, Oasis, Leon

Lower
Range

Conan, Bingo, Leon,
Pastitch Carpet





Collections In Laminate Flooring,
Vinyl And Hardwood Flooring



Luxury
Collection

AGT 12mil (Laminate),
Expression (vinyl)LVT Luxury
Vinyl Tile, Herringbone in 8mm
10mm 12mm, Spc Stone
Plastic Composite Flooring

Mediocre
Range



AGT Laminate 8m,
Solent vinyl





Collections In Our Safety Flooring



Karndeen flooring

Polysafe flooring

Astro flooring

Hydro flooring

Tarasafe flooring





Types Of Underlays



Underlays for Laminate

Premium quality gold

Wood fibre panels

Underfloor heating in Goldseal
and silverseal

Vitrex classic foam

Silverlay

Underlays for Carpets

Super10

Super8

Cloud 9 - *Best Rated
Underlay in the Flooring
Industry



Types Of Door Profiles

Carpet to carpet – double edge (gold, silver, black)

Carpet to tile/laminate – Z edge (gold, silver, black)

Carpet finishing – single edge (gold, silver, black)

Flat bar for slim carpets

Ramp bar (stick-on) used when floors are not one level either side of the door frame.

Laminate to laminate - Flat stick bar

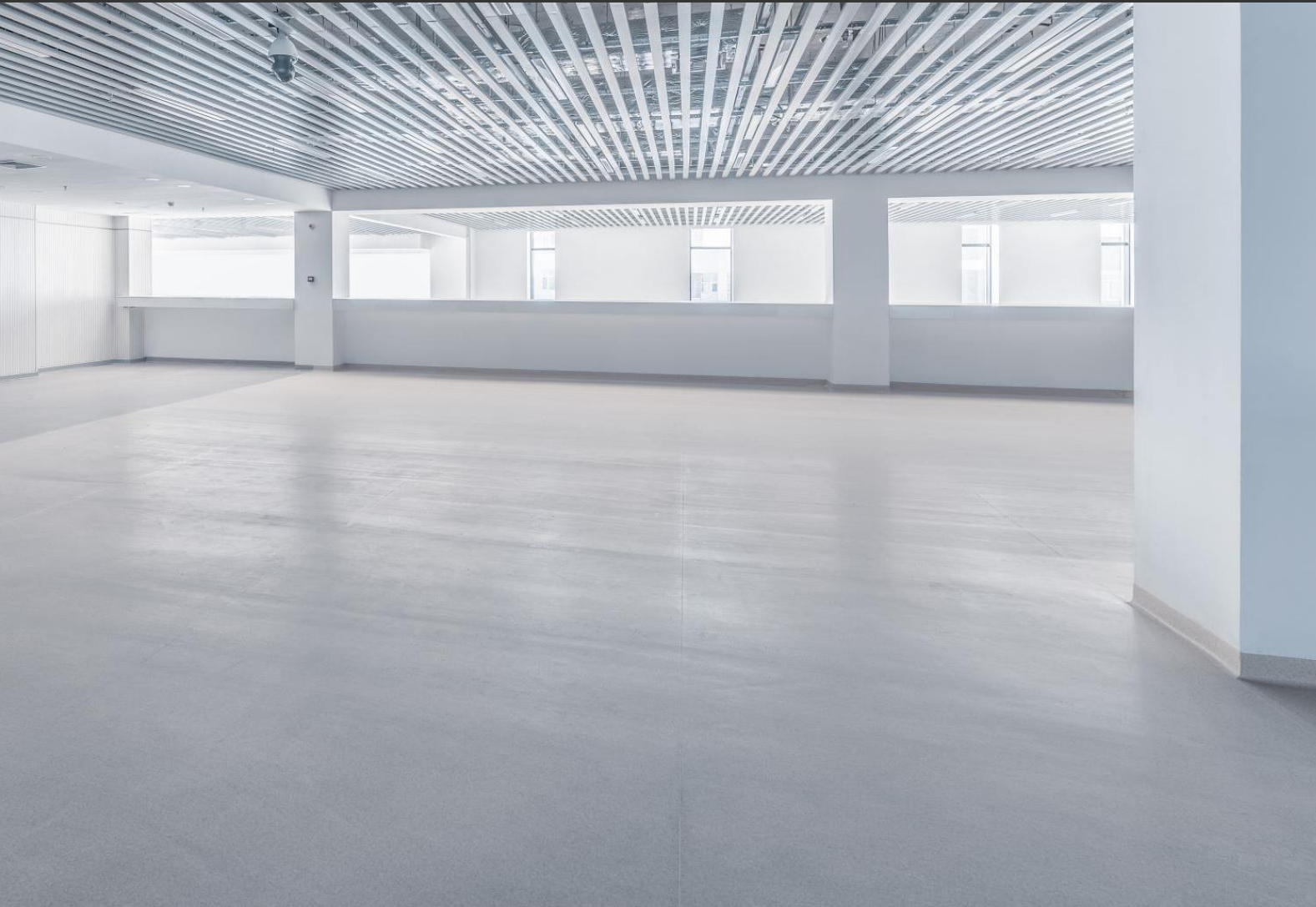
L shape to complement the edge of laminate or vinyl





Renovation Announcement!

Exciting News! The Renovation Has Commenced!



- ▶ Our showroom is currently undergoing a comprehensive renovation to provide an exceptional customer experience.
- ▶ We are revamping our space with modern designs and enhanced displays to showcase our extensive range of flooring solutions.
- ▶ Once renovations are completed, our new space will become the premier showroom for Floortex-UK, where innovation meets quality.



Featured Projects



At Floortex-UK, we take pride in our extensive experience supplying and fitting high-quality flooring across Birmingham. Our team understands the importance of creating spaces that blend durability with aesthetics, ensuring a welcoming and serene environment for congregants, residents, patients and pupils. We have worked closely with sacred spaces, estate agents and HMO's to provide tailored flooring solutions that meet their specific needs. Our commitment to quality craftsmanship and attention to detail has made us a trusted partner within our community.



Floortex-UK

Hamilton Court

Care Home

2 Hinstock Road Birmingham
B20 2ET



Floortex-UK

Proactive Life
Disability Services and
Support Organisation
46 Park Avenue Birmingham
B18 5NE



Ravenhursts Homes

Estate Agents
6b Warstones
Parade E Birmingham
B186NR



Makki Masjid

Mosque

59-61 Beresford Street, Shelton,
Stoke-on-Trent, Staffordshire, ST4
2BJ



Floortex-UK



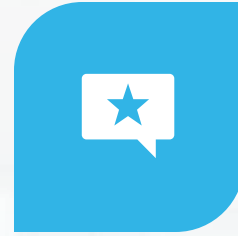
Why Choose Floorortex-UK?



**QUALITY
PRODUCTS**



**EXPERT
INSTALLATION**



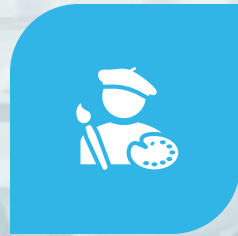
**CUSTOMER-
CENTRIC
APPROACH**



**COMPETITIVE
PRICING**



**EXPERIENCED
PROFESSIONALS**



**ATTENTION TO
DETAIL**



**CUSTOMER
SATISFACTION**



**POST-
INSTALLATION
SUPPORT**



Floortex-UK

Want To Start On A New Project?

For inquiries or to schedule a consultation,
please reach out.



+447815755851



<http://floortex.online>



Floortex-UK



Floortex.UK

